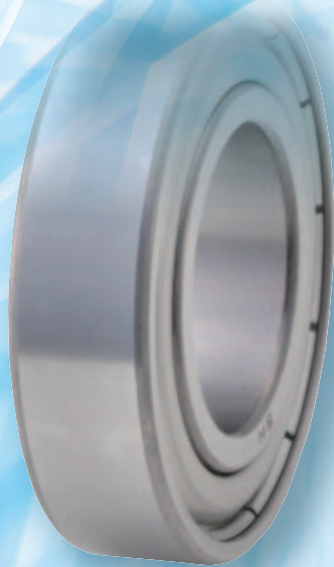
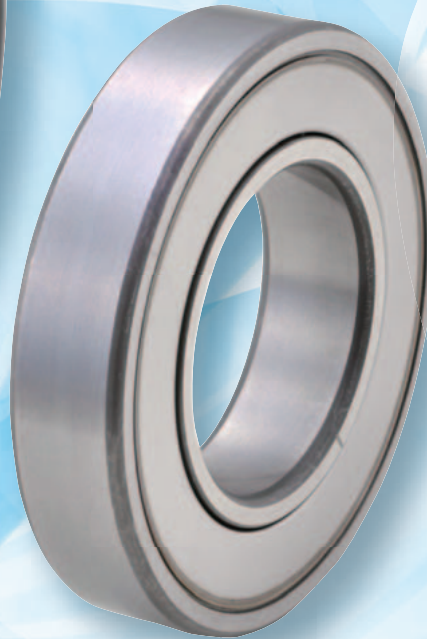


Slim Bearing

Narrowed width contributes to space and weight savings.



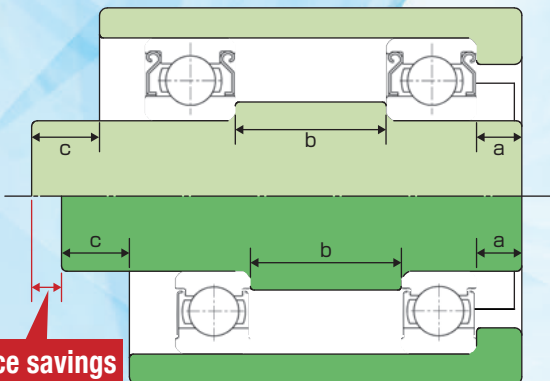
— Standard bearing —



— Slim Bearing —

- **Compact body but equivalent load capacity.**

With standard bearing

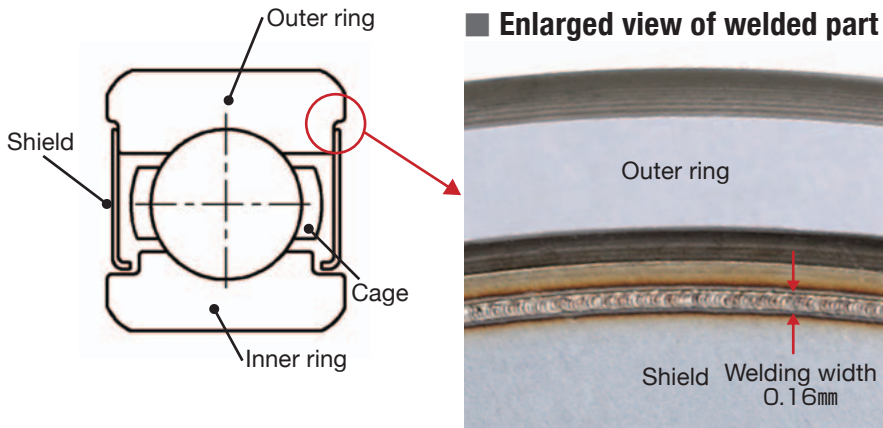


With slim bearing

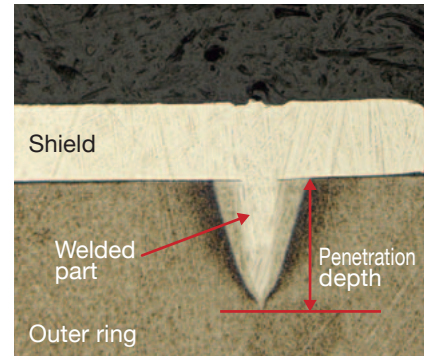
**Equivalent load capacity
Narrowed width (-6 mm) and
reduced weight (-17%)**

		Standard bearing 6008ZZ	Slim Bearing JS6008ZZW
Dimensions	Inner dia.	φ 40 mm	φ 40 mm
	Outer dia.	φ 68 mm	φ 68 mm
	Width	15 mm	12 mm
Rated load	Cr	20.9 kN	20.9 kN
	Cor	11.5 kN	11.5 kN

● **Outer shield is fully sealed by precision laser welding.**

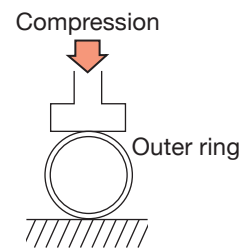
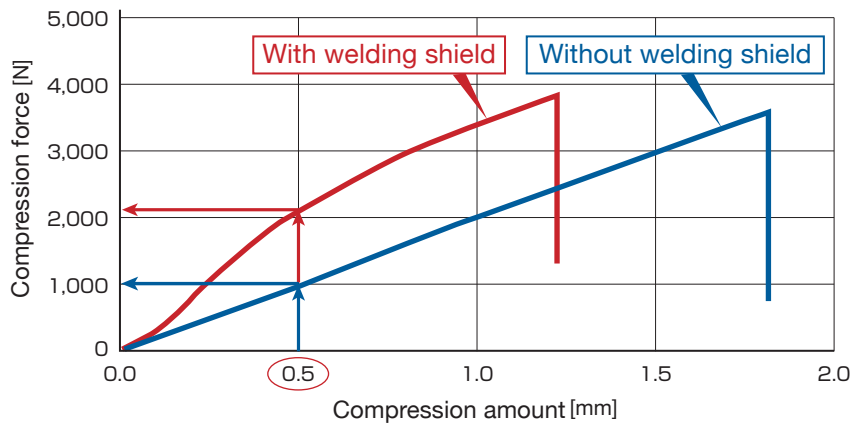


■ **Cross-sectional view of welded part**



*The shallow weld penetration eliminates any adverse influences on bearing strength and performance.

● **Outer ring stiffness is improved by an integrated shield.**



The compression force required to depress by 0.5 mm is increased by over 100%.

● **Expanded lineup**

Bearing No.	Slim bearing dimensions (mm)			Reduced width from standard bearing (mm)	Rated load (kN)	
	Inner dia.	Outer dia.	Width		Cr	Cor
JS6005ZZW	25	47	10	-2	12.6	5.85
JS6204ZZW	20	47	12.5	-1.5	16.0	6.65
JS6205ZZW	25	52	12	-3	17.5	7.80
JS6008ZZW	40	68	12	-3	20.9	11.5
JS6010ZZW	50	80	13	-3	27.3	16.6

Inquiries:

PUBLISHER

JTEKT CORPORATION NAGOYA HEAD OFFICE

No.7-1, Meieki 4-chome, Nakamura-ku, Nagoya, Aichi 450-8515, JAPAN TEL:81-52-527-1900 FAX:81-52-527-1911

JTEKT CORPORATION OSAKA HEAD OFFICE

No.5-8, Minamisemba 3-chome, Chuo-ku, Osaka, 542-8502, JAPAN TEL:81-6-6271-8451 FAX:81-6-6245-3712

Sales & Marketing Headquarters

No.5-8, Minamisemba 3-chome, Chuo-ku, Osaka, 542-8502, JAPAN TEL:81-6-6245-6087 FAX:81-6-6244-9007

-Information in this catalog is subject to change without notice due to continual improvements.