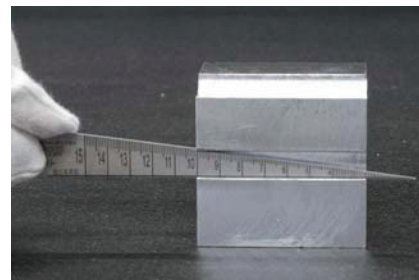
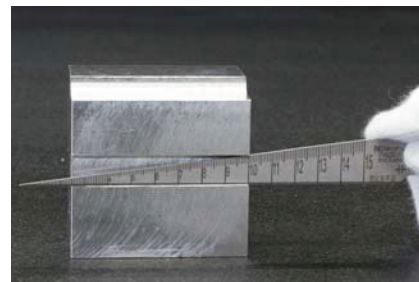
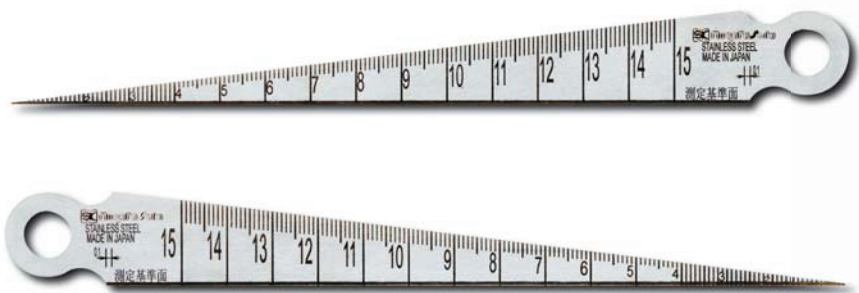


RIGHT ANGLE TAPER GAUGE



- USE**
 - Measurement of groove and gap etc.
- MATERIAL**
 - Hardened stainless steel (SUS420J2)
- FEATURES**
 - Taper gauge specialized for inner width measurements. One side of gauge rests secure along with the workpiece for a stable measurement.
 - Scale is on the side of gauge to allow reading when top surface is not visible during measurement

Order No.	Model No.	Measuring Range (mm)	Accuracy (mm)	Graduation (mm)	Taper Angle	Product Dimensions Full Length x Width (mm)	Weight
NEW007004	TPG-700T	1~15	±0.05	0.1	7° 9' 10"	148.5	10g

BLOCK GAUGES

PIN GAUGES

PIN VISE

PIN GAUGE ACCESSORIES

TAPER GAUGES

Clip style plastic case



Perfect for carrying in shirt pocket

- USE**
 - Use the width of taper to measure the gap width
- MATERIAL**
 - Hardened stainless steel (SUS420J2)
 - Hardness : HV480
- FEATURES**
 - Satin finish
 - Reverse side- scale graduated, hole diameter conversion table
 - Pocket clip style carrying case
 - Scale : Front side- Width scale, Reverse side - Length scale

Order No.	Model No.	Standard	Measuring Range (mm)	Accuracy (mm)	Graduation (mm)	Taper Angle	Full Length (mm)	Thickness (mm)	Weight
007008	TPG-700AC	#700 1-15 with Plastic case	1 ~ 15	± 0.05	0.1	7° 9' 10"	148.5	1.2	10g

GAUGES

THREAD GAUGES

PLUG GAUGES

RING GAUGES

THICKNESS GAUGES

TAPER GAUGES

WELDING GAUGES

OTHER GAUGES