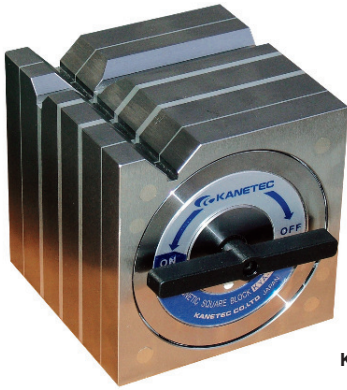
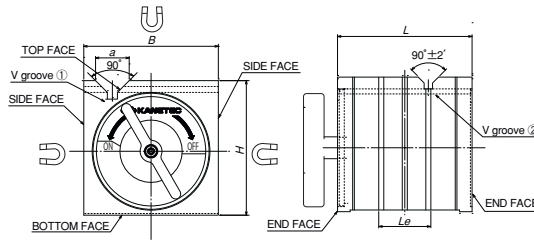


## Model KYA SQUARE TYPE BLOCK



KYA-13B



**[Application]**

Holding tools for marking and light duty machining.  
 Holding tools for electric discharge machining and wire cutting.  
 Holding tools for three-dimensional measuring instruments and various measuring systems.

**[Features]**

- Workpieces can be held on three faces of top (V face) and both side faces.
- On/Off lever is detachable. ( length of each opposite side of hexagonal hole is 8mm )
- They are of waterproof and oilproof construction.
- An M8 tapped hole is provided on the top for lifting (KYA-18 only).
- Super high accuracy finish is also available. Please contact us.

[mm (in)]

Model	Holding Power		Applicable Diameter		Dimensions					Mass
	V groove①	V groove②	V groove①	V groove②	B	H	L	Le	a	
KYA- 8B	120N (12kgf)	100N (10kgf)	φ 10~φ 25	φ 8~φ 15	80 (3.14)	80 (3.14)	80 (3.14)	31 (1.22)	20 (0.78)	3.5kg/ 7.7 lb
KYA-10B	200N (20kgf)	120N (12kgf)	φ 10~φ 35	φ 10~φ 30	100 (3.93)	100 (3.93)	100 (3.93)	42 (1.65)	26 (1.02)	7kg/ 15 lb
KYA-13B	300N (30kgf)	250N (25kgf)	φ 10~φ 40	φ 10~φ 26	125 (4.92)	125 (4.92)	125 (4.92)	48 (1.88)	30 (1.18)	14kg/ 30 lb
KYA-15B	400N (40kgf)	400N (40kgf)		φ 10~φ 38	150 (5.90)	150 (5.90)	150 (5.90)	61 (2.40)	32 (1.25)	23kg/ 13 lb
KYA-18B	400N (40kgf)	300N (30kgf)	φ 14~φ 50	φ 14~φ 50	180 (7.08)	180 (7.08)	180 (7.08)	69 (2.71)	38 (1.49)	37kg/ 13 lb
KYA-20B		650N (65kgf)			650N (65kgf)	200 (7.87)	200 (7.87)	200 (7.87)		101 (3.97)

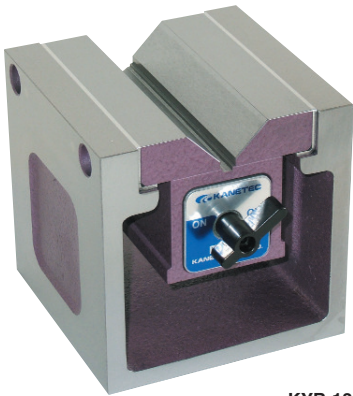
※The above value attractive force is in case of round steel of dia. 20mm on V face.  
 ※For accuracy, please refer to the below-mentioned table.  
 ※Please take note that attractive force of the each face is reduced when a work piece is attracted on more than 2 faces at the same time.

### KYA Block/holder accuracy

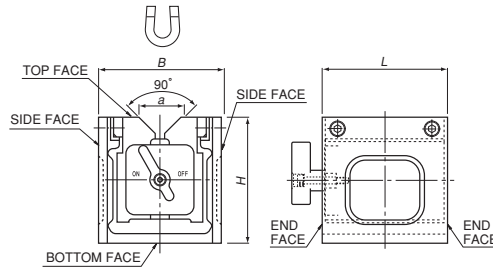
(μm)

Model /Accuracy		KYA-8B		KYA-10B		KYA-13B		KYA-15B		KYA-18B		KYA-20B	
Item		Standard	Special	Standard	Special	Standard	Special	Standard	Special	Standard	Special	Standard	Special
Parallelism	Bottom face to top face	10		10		15		15		20		20	
	Bottom face to V face		7		7		8		8		9		9
	End face to end face					12		12		15			
	Side face to V face	20		20		25		25		30		30	
Flatness of bottom face		10		10		15		15		20		20	
Squareness	Bottom face to side face	20	10	20	10	25	12	25	12	30	14	30	14

## Model KYB SQUARE TYPE BLOCK



KYB-13A



**[Application]**

Holding device for marking or light processing.  
 Holding device for ED process  
 Holding device for three dimensional measuring machine and various kinds of measuring, measuring system.

**[Features]**

- The attraction on one face of the upper (V) face is possible.
- On/Off lever is detachable. (length of each opposite side of hexagonal hole is 8mm)
- Drip-proof and oil resistance type,
- The higher accuracy finish is separately available upon request.

[mm (in)]

Model	Holding Power	Applicable Diameter	Dimensions				Mass
			B	H	L	a	
KYB- 8A	180N (18kgf) or over	φ 10~φ 32	80 (3.14)	80 (3.14)	80 (3.14)	29 (1.02)	2.5kg/5.5 lb
KYB-10A	343N (35kgf) or over	φ 13~φ 50	100 (3.93)	100 (3.93)	100 (3.93)	40 (1.57)	6kg/13 lb
KYB-13A	400N (40kgf) or over		125 (4.92)	125 (4.92)	125 (4.92)		8kg/17 lb
KYB-15A	589N (60kgf) or over	φ 14~φ 66	150 (5.90)	150 (5.90)	150 (5.90)	50 (1.96)	12kg/26 lb
KYB-18A	600N (60kgf) or over		180 (7.08)	180 (7.08)	180 (7.08)		16kg/35 lb
KYB-20A	785N (80kgf) or over		200 (7.87)	200 (7.87)	200 (7.87)		22kg/48 lb

### KYB Block/holder accuracy

※ The holding power applies to the V-face and φ20 round bar. ※For accuracy, see the table below.

(μm)

Model /Accuracy		KYB-8A		KYB-10A		KYB-13A		KYB-15A		KYB-18A		KYB-20A	
Item		Standard	Special	Standard	Special	Standard	Special	Standard	Special	Standard	Special	Standard	Special
Parallelism	Bottom face to top face	10		10		15		15		20		20	
	Bottom face to V face		7		7		8		8		9		9
	End face to end face					12		12		15			
	Side face to V face	20		20		25		25		30		30	
Flatness of bottom face		10		10		15		15		20		20	
Squareness	Bottom face to side face	20	10	20	10	25	12	25	12	30	14	30	14