

USB Data Logger

Practical !

Electronic recording device to monitor accidents during transportation

- ◆ Require USB cable only – No exclusive reader required
- ◆ Compact body – Useful for getting a sample of shock of various objects and places
- ◆ Conform RTCA/DO-160D standard – Available for airplanes

Temperature and Humidity data logger



Temperature recording of cold chain/Temperature and Humidity control in warehouse or green house

Shock data logger



Possible to identify the exact time of drop or collision !

shock measurement during transportation (food/medicines/precision machinery/materials/parts/etc)

USB cable connection allows direct setting, sampling, recording and checking

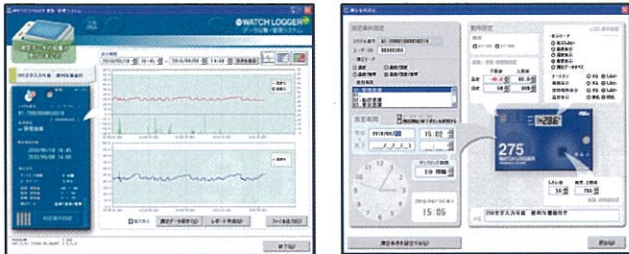


- ① Connect WATCH LOGGER and PC with USB cable
- ② Data is automatically collected after USB connection
- ③ Control of temperature, humidity and shock is realized by user friendly graph display

Software Data graph display and report generation software is attached as standard accessory

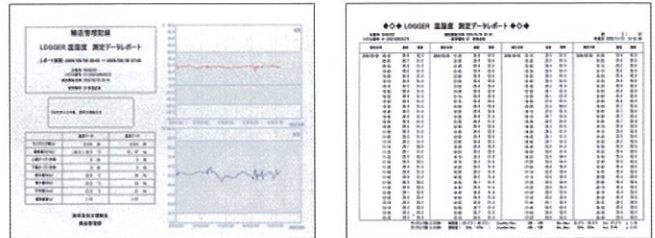
Graph display screen

Automatic data reading is available just by connecting the logger and PC with USB cable. Maximum value, minimum value, average value other than transitive value can be displayed on the screen.



Report of recording certificate

Sampling data can be printed in report format. The data can be also stored in CSV format so that it can generate an original report.



Accessory software

Data collecting software is attached with the logger as standard accessory. Just installing it in the computer to start working immediately.



Sampling Date	Tempe	Humi
2010/09/15 16:00	28.7	55.0
2010/09/15 16:16	30.2	52.0
2010/09/15 16:17	31.0	51.0
2010/09/15 16:18	31.9	50.0

Sampling Date	Shock (X)	(Y)	(Z)
2010/09/15 16:08	3	14	3
16:08	2	-5	3
2010/09/15 16:08	42	30	-16
16:12	9	15	-11

★ Abnormal data is displayed in red by setting lower value or upper value of temperature, Humidity and Shock in condition setting screen.

Specification Easily visualize consistent temperature variation, Shock generation during transportation and storage.

Model	KT-155U	KT-255U	KT-195U	KT-295U
Appearance				
Sampling item	Temperature	Temperature/Humidity	Shock/Temperature	Shock/Temperature/Humidity
Sampling range	Temperature	-40°C~80°C	-40°C~80°C	-40°C~80°C
	Humidity	—	5%~90%	5%~90%
	Shock	—	—	±5G~±75G
Resolution	Temperature	0.1°C	0.1°C	0.1°C
	Humidity	—	1%	—
	Shock	—	—	1G
Accuracy	Temperature	±1.0°C	±1.0°C	±1.0°C
	Humidity	—	±5%	—
	Shock	—	—	±15%
Sampling capacity	Temperature	14,000 samples	14,000 samples	6,000 samples
	Humidity	—	14,000 samples	—
	Shock	—	—	XYZeach axis2,000samples
Sampling interval (10min. sampling interval)	55days	55days	40days (No Shock)	40days (No Shock)
Battery	Type	CR2477		CR2477
	Life	2 years		60days
Dimension	90(W) × 34(H) × 15(D)mm			
Weight	About45g			
Water proof structure	IP54	—	IP54	—
Sampling interval	1 min.~255min. interval(Shock is recorded when it is sensed)			
Corresponding readers	(USB cable direct communication)			

- Battery life depends on usage. Please use this information just for a reference.
- WATCHLOGGER (Watch logger) is registered trade mark of Fujita Electric Works, Ltd
- Operational environment, OS:Windows/XP/Vista/7, CPU: Pentium 200Mhz or more, CD-ROM drive and USB port.
- Specifications in the catalogue are subject to change for improvement without prior notice
- There may be some color differences between actual product and catalogue due to finish of the printing.