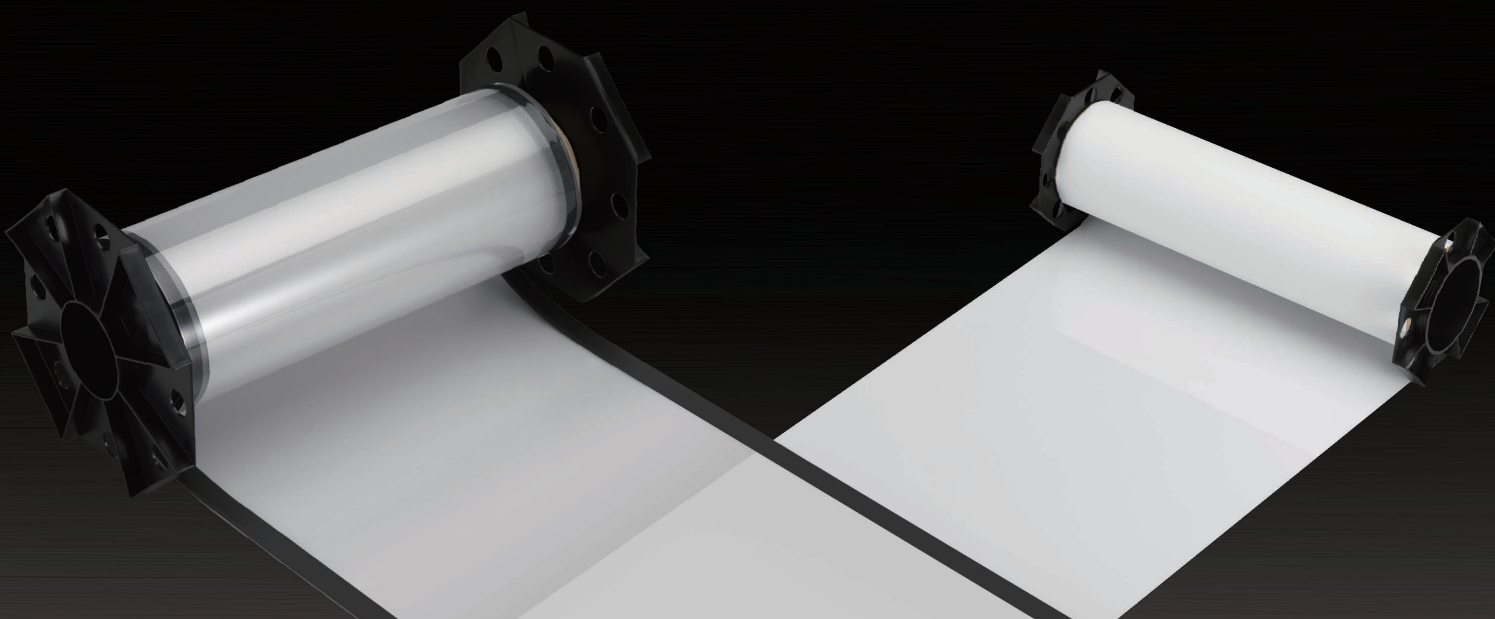


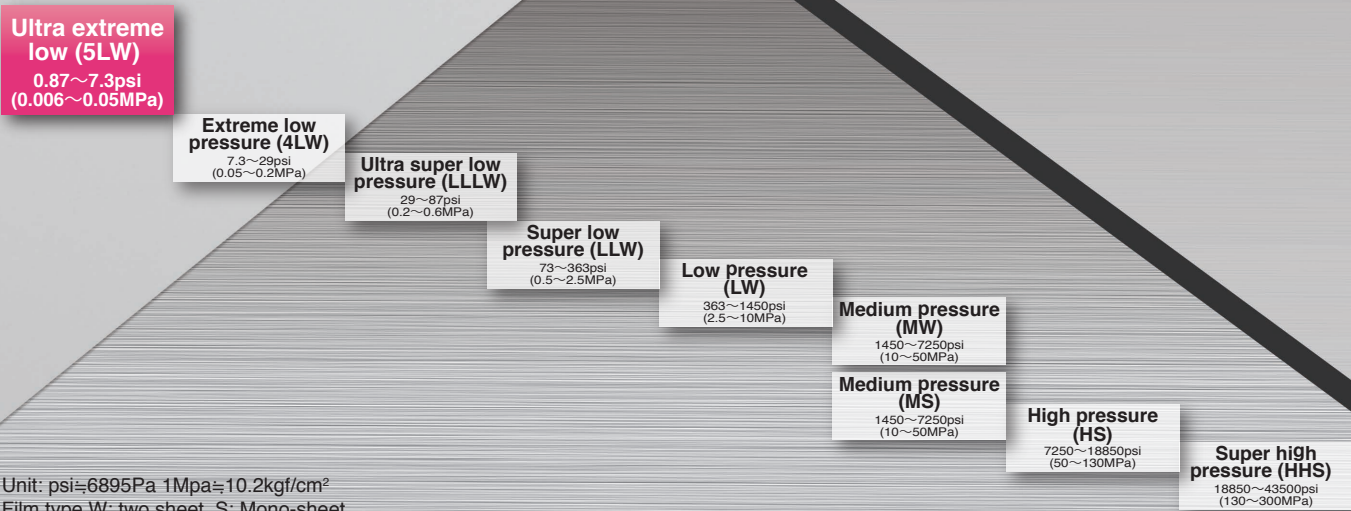
PRESCALE

Pressure measurement film
ultra extreme low two sheet type
0.87~7.3psi (0.006~0.05MPa)



5LW

Bringing pressure measurement to the next stage



Unit: psi=6895Pa 1Mpa=10.2kgf/cm²
Film type W: two sheet S: Mono-sheet

The only tool to measure pressure visually

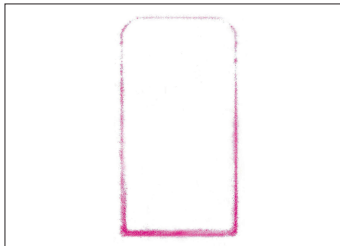
Can check the surface pressure distribution easily

Can measure in short time at first sight

Can get the pressure in numerical form by analyze system

Saves cost as no special equipment are required

Usages



■ smartphone

Can detect the flaw in the assembly process by the dispersion of color density



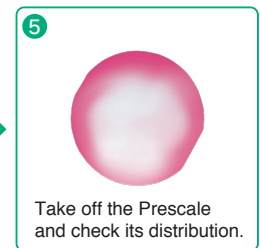
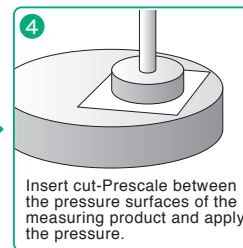
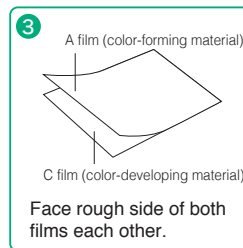
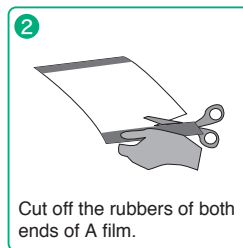
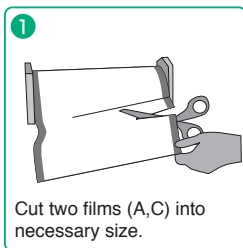
■ Composite device

Can detect the flaw of nip rolls by the dispersion of color density

■ Can check the pressure distributions of below applications

- Plying-up of LCD backlight
- assembly process in smartphone
- nip rolls of printer, composite device
- wiping power of ink head in ink jet digital printer
- nip roll balance when manufacturing functional film
- die bonding process of semiconductor
- CMP grinding of semiconductor
- door sealing of car

How to use



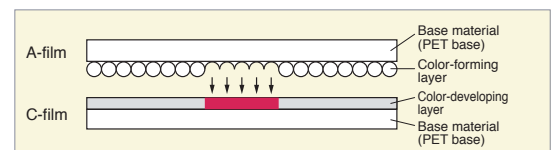
[cautions] Need to be careful when handling 5LW. Please do not touch carelessly or rub the color-forming surface of A film or bend the films.

Technology (two sheet type)

Composed of two kinds of films: A-film and C-film

- **A-film:** Base material (PET base) coated with a color-forming material (microcapsules)
- **C-film:** Base material (PET base) coated with a color-developing material

The coated sides of each film (color-forming and color-developing) must face each other. These are the sides with the matt finish. When pressure is applied, the microcapsules are broken and the color-forming material transfers to the color-developing material and reacts, thereby generating a red color.



Specification

Film type	two sheet type
Film size	310mm×2m
Pressure range	0.87~7.3psi (0.006~0.05MPa)
Accuracy	±10% or less (when measured at 23°C, 65%RH)
Recommend temperature	15°C~30°C
Recommend humidity	20%RH~75%RH



*Specifications and performance capabilities are subject to change without notice.

FUJIFILM

FUJIFILM Corporation

<http://www.fujifilm.com/products/prescale/>
<https://contact.fujifilm.com/products/prescale/guide/>

Ref. No. IB-0808E (FFBX-17-07) Printed in Japan © FUJIFILM Corporation