

Model: **AF4915-ZT 1.3MP** Dino- Lite Edge

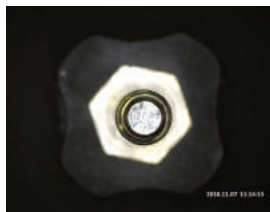


PRODUCT SUMMARY

The Dino-Lite Edge 1.3MP AF4915ZT, an all-in-one device with adaptable interface, is designed to meet most professional applications within 20-220x magnification. The AF4915ZT integrates with EDOF, EDR, AMR and FLC as well as crisp image quality, making it one of the most versatile devices of Dino-Lite. When attaching with WF-20, a Wi-Fi streamer, the AF4915ZT could be transformed into a wireless microscope, catering the needs for field applications.

GALLERY

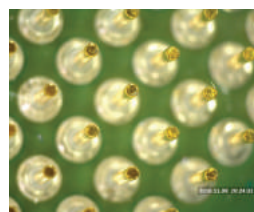
Without EDR effect



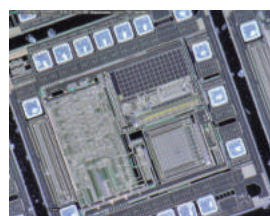
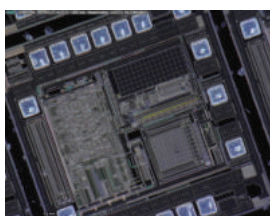
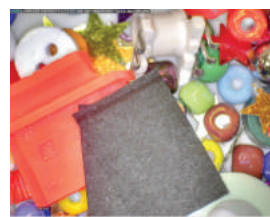
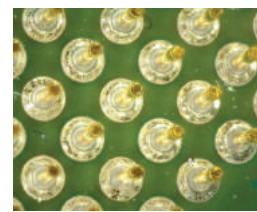
With EDR effect



Without EDR effect



With EDR effect



SPECIFICATIONS

Model	AM4915ZT 1.3MP Dino-Lite Edge	Operating System Supported	Window 10, 8, 7, Vista, XP MAC OS 10.10 or later (EDOF / EDR are NOT controllable on Mac OS)
Interface	USB 2.0		
Product Resolution	1.3M pixels (1280 x 1024)	Calibration Function	Yes
Magnification Rate	20x - 220x		
Frame Rate	15FPS in 1.3MP , MJPEG 30FPS in VGA , MJPEG	Measurement Function	Yes
Lighting	8 White LEDs	Unit Dimensions	11.4cm (H) x 3.3cm (D)
Microtouch	Yes	Unit Weight	111 (g)