

ワイヤレスノイズキャッチャー WIRELESS NOISE CATCHER KEK-7-2

New noise catcher allows wireless connection in detecting car noise whereas the previous model requires wiring. By installing the included software and using wifi connection, the users can check the noise data on PC screen. Also, the device allows a detailed analysis based on sound waves, frequencies, saving/playing data functions.



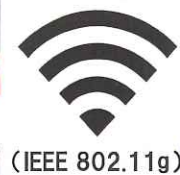
Powerful magnet attached on the back (Neodymium magnet)



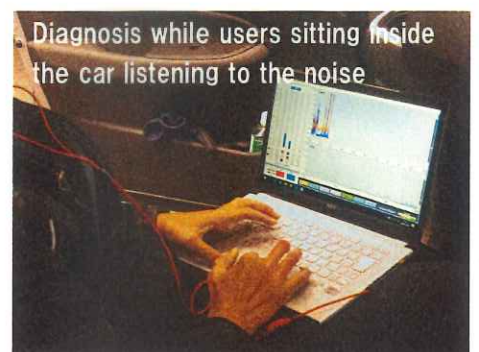
Wi-fi connection range : 10m
Broad scope of detection is possible.



Sensor attached to the steel with magnet



The checker detects noise from a distance with your computer.



Diagnosis while users sitting inside the car listening to the noise

Place sensors on the spots to be diagnosed
Magnet on the back sticks to the spots

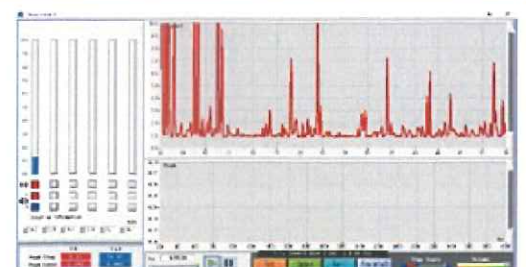
Noise diagnosis on PC monitor with wireless connection.
PC with wi-fi connection required (IEEE 802.11g)

Standard Accessories

- Noise catcher sensors (Qty : 2)
- USB type-c charging cable (Qty : 2)
- Gateway router (Qty : 1)
- Software
- Container case (Qty : 1)

Various Analysis Available

- ☒ Functions to "save" and "play" detected noise data
- ☒ Sound waves of each channel
- ☒ Display of frequency
- ☒ Report generation



Simultaneous connection of max. 6 channels available (Application image)

Wireless noise catcher allows highly efficient maintenance.

Main Functions

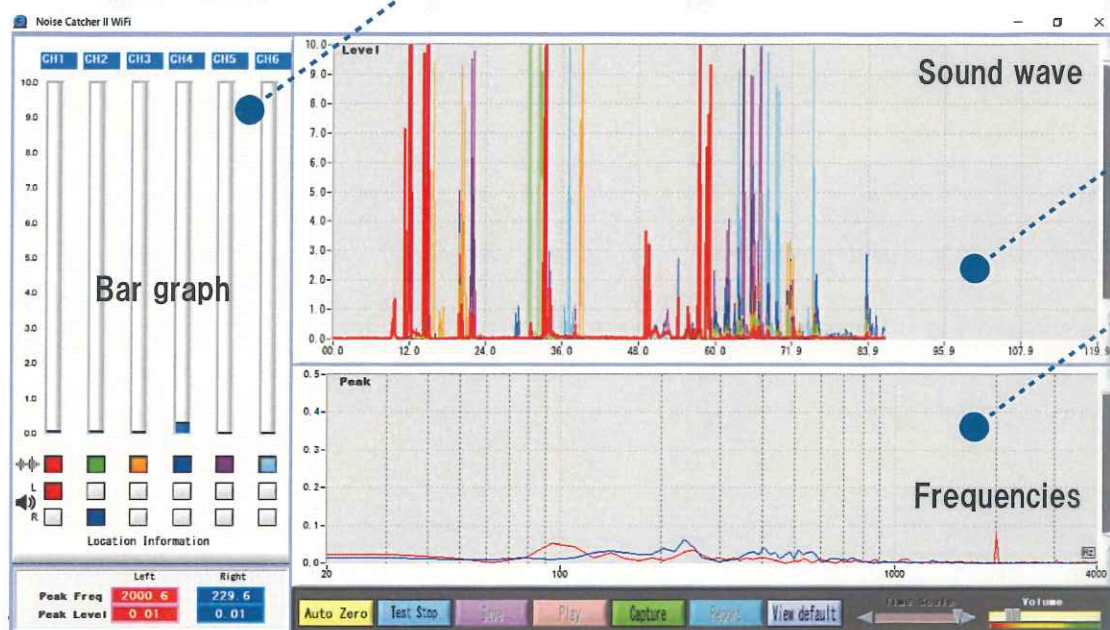


Indicator lamp (green)
CONNECT : on/off, connectivity and residual power
CHARGE : charging when it is on

Specifications

Product Number	KEK-7-2
Dimensions of a sensor	50 × 26 × 18 mm
Weight of a sensor	25 g
Power source	Lithium-ion battery
Run time on a full charge	Approx. 3 hours
Attachment method	Neodymium magnet (back of a sensor)
Protocol	Wi-Fi (IEEE 802.11g)
Measurement distance	10 m
Max. channel connections	6 channels
Applicable OS	Windows 10

Screen



Bar graph

Bar graph shows sound level of each channel.

Sound wave

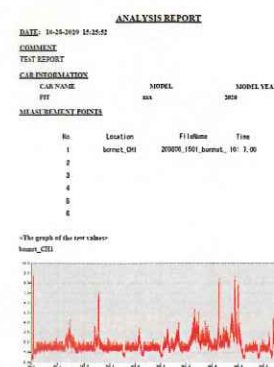
This screen shows the sound level of each channel.

Frequencies

This screen shows frequencies of the selected channels (up to 2) .

Report Generation

Using saved data, WORD report of sound data is generated.



● Optional Accessories (sold separately)

KEK-7-2S

Noise catcher sensor with dedicated case

This accessory is necessary to increase the number of channels to use. (Sensor : 1, Charging cable : 1)



KOWA SEIKI CO., LTD.

URL: <https://www.kowa-seiki.co.jp/>

7F MIYATA KINZOKU BLDG. 2-15-18 MISUJI,
TAITO-KU TOKYO JAPAN, Zip Code 111-0055

TEL : +81-3-5822-0855

FAX : +81-3-5822-0850

