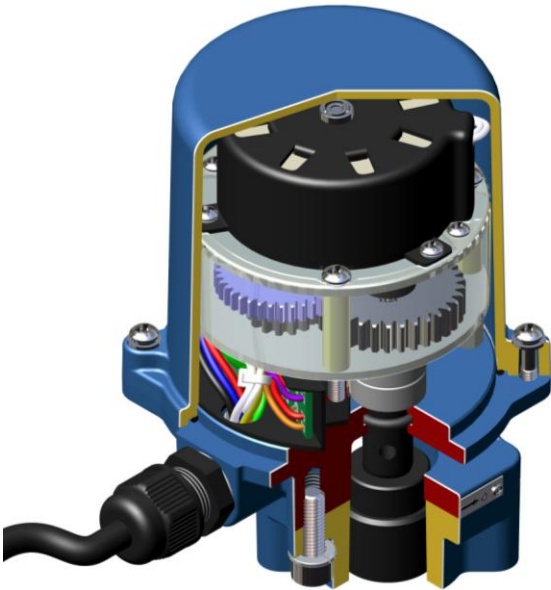


## Compact Electric Actuator T series

Sun Yeh compact actuators T series provide with torque of 6Nm and 15Nm. This compact actuator designs for a small space and applies to small valve and damper applications.



### *Features*

Compact size can install in small space

Dry-powder coated aluminum alloy cover complies to NEMA 4X (Optional)

Manual operation can be applied in case of electric failure

Built-in thermal protection prevents motor burning out


Simple design, easy operation

### *Important notices and Maintenance*

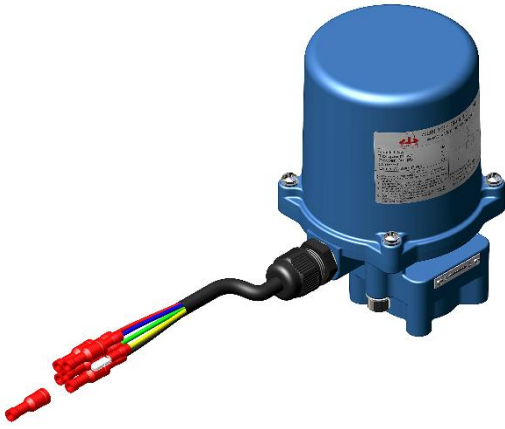

- Make sure the voltage is correct before wiring.
- Power off before distribution or for maintenance purpose.
- Lock tight the casing and conduit entrance after power distribution to prevent from dusting or water spoiling.
- The electric actuators must not be installed below the horizon or upside down.
- Avoid installing in the zone of gas or any chemical agent that might caused explosion.
- Don't install in the complete vacuum space directly.
- Actuators should be stored at clean and dry place, and protected with outer carton from being affected by great temperature difference or serious vibration.
- When more than one electric actuator needed to operate simultaneously, please connect with individual cables to avoid parallel connection.
- Please connect the ground wire to PE inside the electric actuator.
- The warranty period is one year.

General Information and Options

Standard

Models	T6			T15		
Torque Max.	6Nm			15Nm		
Power Supply	110V AC	220V AC	24VAC	110V AC	220V AC	24V AC
Mounting Flange	ISO5211 F03/F05					
Manual Override	✓					
Duty Cycle	30%					
Control	ON-OFF					
Ambient Temperature	-30% ~ +65°C					
Top Cover	Plastics					
Environmental Rating	MEMA 5					
Conduit entrance	1/4"PF ( Max. Internal Diameter: 8mm)					
						

Option

Top Cover/Environmental rating	Aluminum Alloy, Electrostatic Paint /NEMA 4X	
Mounting Flange	ISO5211 F04	
Conduit entrance (length of cable: 1m)		

*Motor data*

110V AC, 1 Phase

Model	Speed (90)	Motor Power	Current			
			Run(60Hz/50Hz)		Start	Lock
T6	7	5	0.3	0.4	0.4	0.3
T15	17	5	0.3	0.4	0.4	0.3

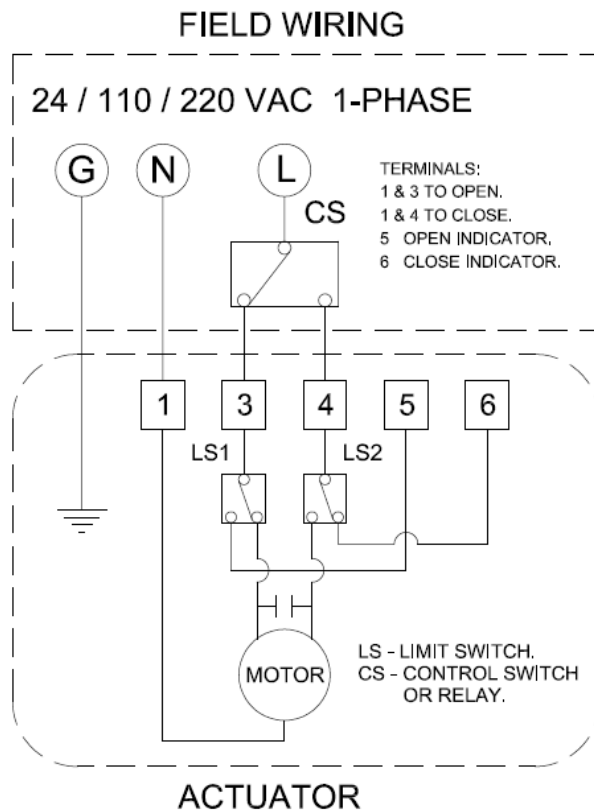
220V AC, 1 Phase

Model	Speed (90)	Motor Power	Current			
			Run(60Hz/50Hz)		Start	Lock
T6	7	5	0.2	0.3	0.3	0.3
T15	17	5	0.2	0.3	0.3	0.3

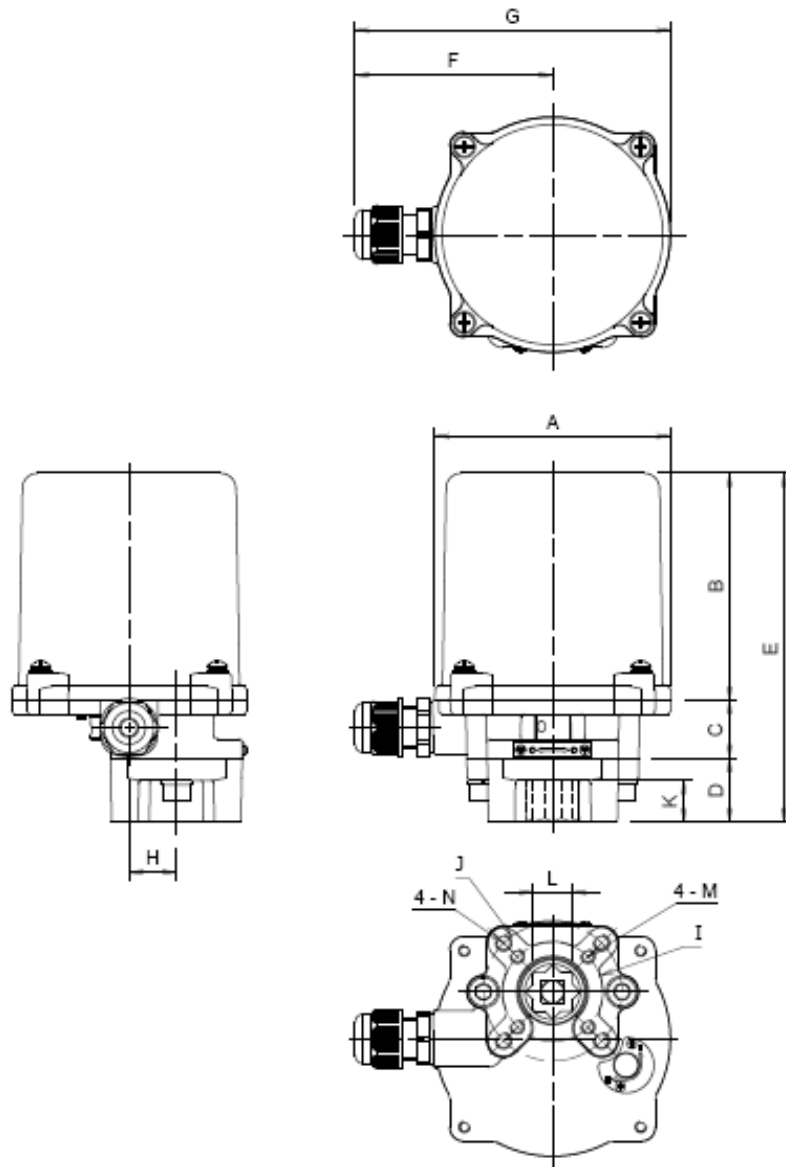
24V AC

Model	Speed (90)	Motor Power	Current			
			Run(60Hz/50Hz)		Start	Lock
T6	7	5	1.1	1.5	1.5	1.5
T15	17	5	1.1	1.5	1.5	1.5

*Wiring Diagram*



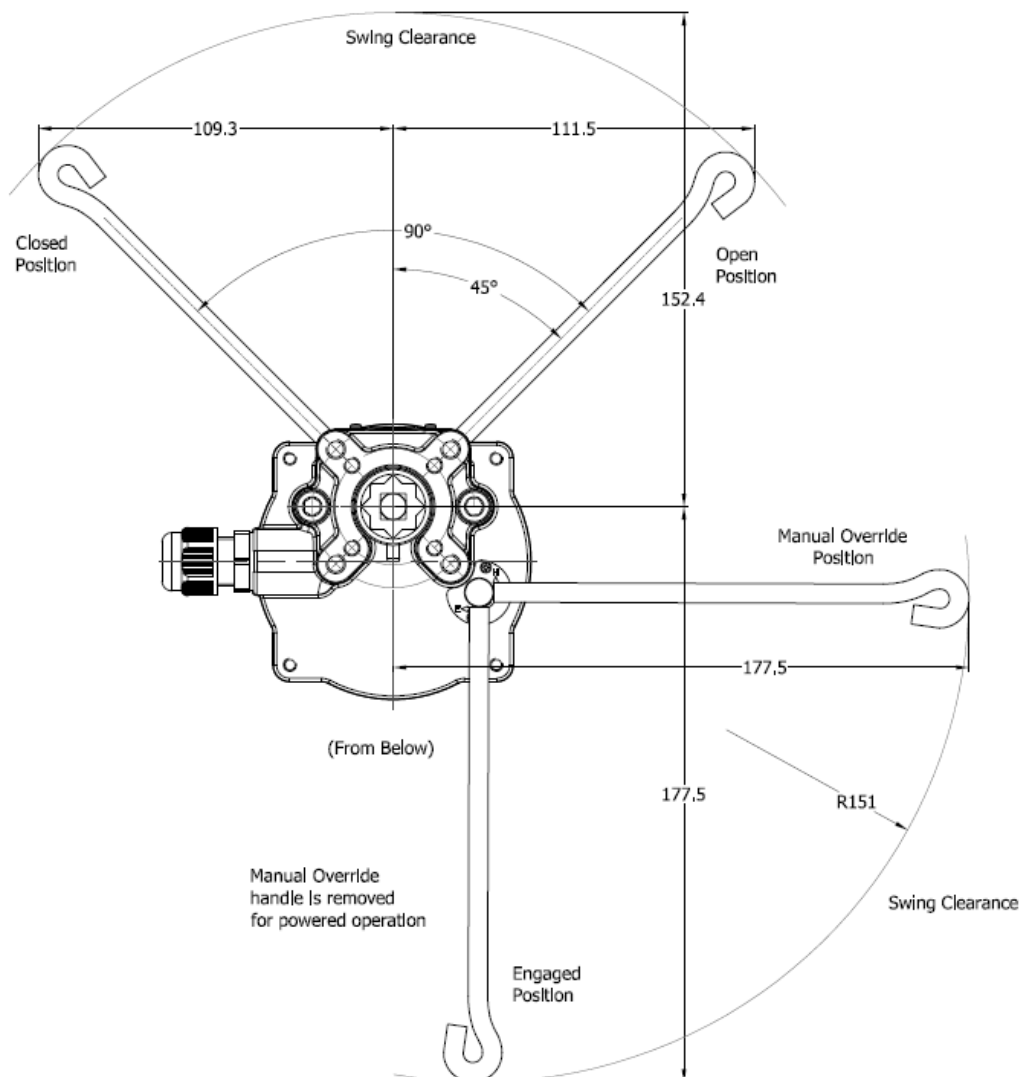
*Outline Dimensions*



Model NO	A	B	C	D	E	F	G	H	I	J	K	L	M	N	Flange Type
T6,T15	∅85	82	21	23	126	71	114	17	∅36	∅50	15	14	M5*0.8	M6*1.0	F03,F05

Note: The dimension is base on 110/220VAC actuator, for 24VAC type the “B” will be 113mm and “E” will be 157mm.

## Steps of Manual Operation



- Using attached tool to switch the actuator from electrical operation (E) to manual operation (H).
- Utilizing Manual Override to operate open or close.

Note: after using the manual override for positioning, switch it back to electrical operation (E) to allow the actuator function again under power.