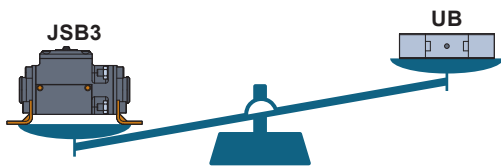


# A slim and lightweight profile. Many new things come to mind for the

They come with a fixing mechanism which locks and unlocks linearly using air.  
Simple air control means remote operation is possible, enabling "fixing," "improved safety," and "position locking."  
Light and compact, it also handles "tracking transport." Allow us to present new ideas for the Position Locking Unit.

## Lightweight and slim

Weight comparison (image) with the CKD brake unit



Faster transfer  
via robot



## Manual release available

Insert a flathead screwdriver into the manual release hole and slide the piston to enable manual release. Manual release is possible even without air when embedding or during maintenance. (Pay attention to the screwdriver insertion position.)

## Position locking unit UB Series

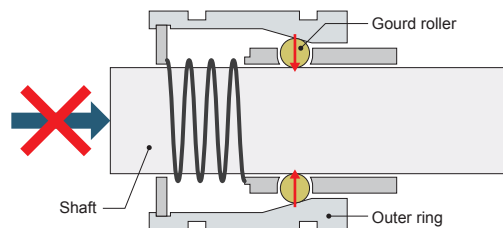
## Energy saving

While locked, neither electrical nor pneumatic power is needed.



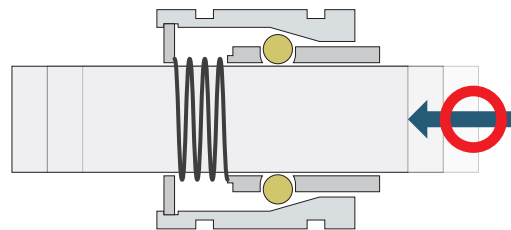
## Locking mechanism

Lock direction



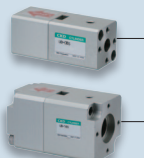

Locks when the gourd roller rolls into the wedge-shaped space formed by the shaft and outer ring.

Free direction



The mechanism does not lock in the reverse direction.

## Position locking unit UB Series

Model variations	Applicable shaft diameter	Lock direction
<b>UB-S</b> 	ø8 ø16	Uni-direction
<b>UB-W</b> 	ø8 ø16	Bi-direction

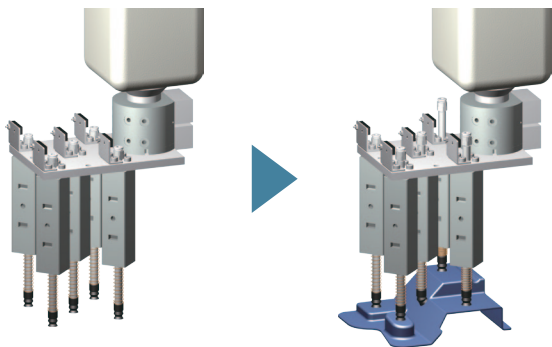
# Position Locking Unit.



## Applications

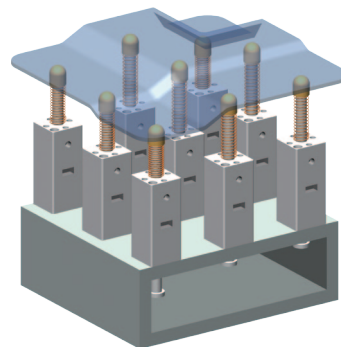
New ways of use made possible by this light, compact Position Locking Unit.

### Robot hand



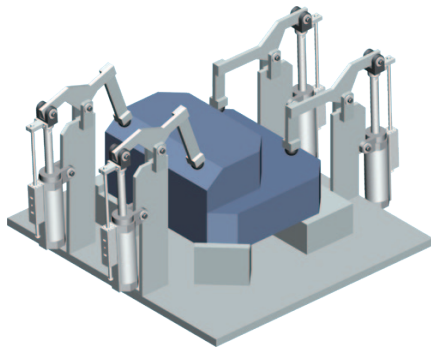
Tracks the workpiece shape simply by pressing the workpiece onto the shaft.

### Tracking unit with bottom support



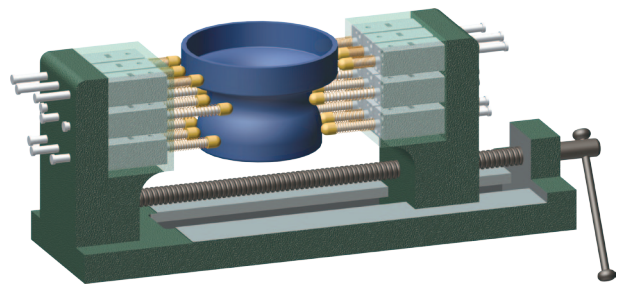
Tracks the workpiece shape simply by placing the workpiece on the shaft.

### Clamp cylinder fixing and retention



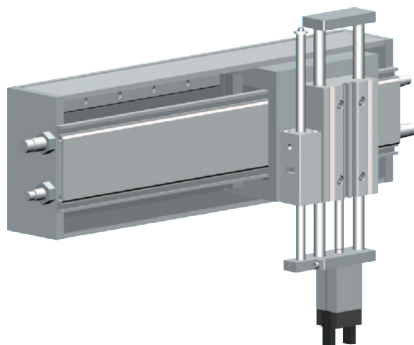
Saves energy because air is not required while locked. (Note that no clamp force operates on the workpiece)

### 3D vise



Tracks the workpiece shape simply by retaining the workpiece with the shafts at both sides.

### Fixing and retention for pick & place stoppages (failsafe)



Cylinder position can be retained with a low-priced mechanism, providing position locking just in case it is needed. Protects valuable components from being dropped if the power goes out or the air runs out.

### Tracking principle

When the workpiece is pressed against the shaft, the shaft transfers (tracks) its shape and is then fixed in the adjusted position by the Position Locking Unit.

