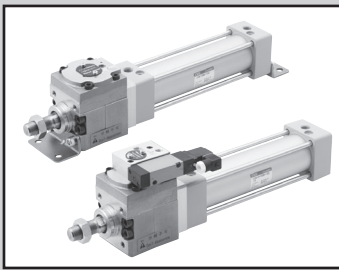


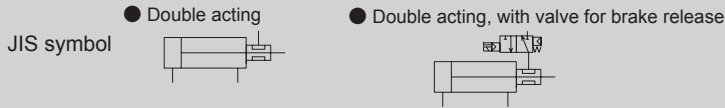
LCW  
LCR  
LCG  
LCX  
LCM  
STM  
STG  
STS/STL  
STR2  
UCA2  
ULK\*  
JSK/M2  
JSG  
JSC3/JSC4  
USSD  
UFCD  
USC  
JSB3  
LMB  
LML  
HCM  
HCA  
LBC  
CAC4  
UCAC2  
CAC-N  
UCAC-N  
RCC2  
RCS  
PCC  
SHC  
MCP  
GLC  
MFC  
BBS  
RRC  
GRC  
RV3\*  
NHS  
HR  
LN  
Hand  
Chuk  
MecHnd/Chuk  
ShkAbs  
FJ  
FK  
SpdContr  
Ending



Tie rod cylinder with brake Double acting single rod/double acting with valve for brake release

# JSG/JSG-V Series

● Bore size: φ40/φ50/φ63/φ80/φ100



## Specifications

Descriptions		JSG					JSG-V					
Bore size		mm	φ40	φ50	φ63	φ80	φ100	φ40	φ50	φ63	φ80	φ100
Actuation		Double acting					Double acting/with valve					
Working fluid		Compressed air					Compressed air					
Max. working pressure		MPa	1.0 (≈150 psi, 10 bar)					0.7 (≈100 psi, 7 bar)				
Min. working pressure		MPa	0.3 (≈44 psi, 3 bar)					0.3 (≈44 psi, 3 bar)				
Proof pressure		MPa	1.6 (≈230 psi, 16 bar)					1.6 (≈230 psi, 16 bar)				
Ambient temperature		°C	-10 (14°F) to 60 (140°F) (no freezing)					-10 (14°F) to 60 (140°F) (no freezing)				
Port size	Brake section		Rc1/8		Rc1/4		Rc3/8	Rc1/8		Rc1/4		
	Cylinder		Rc1/4		Rc3/8		Rc1/2	Rc1/4		Rc3/8		Rc1/2
Stroke tolerance	mm	With rubber cushion	$^{+1.4}_0$ ( to 1000), $^{+1.8}_0$ ( to 1500)					$^{+1.4}_0$ ( to 1000), $^{+1.8}_0$ ( to 1500)				
	With air cushion	$^{+1.0}_0$ ( to 360), $^{+1.4}_0$ ( to 1000), $^{+1.8}_0$ ( to 1500)					$^{+1.0}_0$ ( to 360), $^{+1.4}_0$ ( to 1000), $^{+1.8}_0$ ( to 1500)					
Working piston speed		mm/s	50 to 1000 (Operate within the allowable absorbed energy.)					50 to 1000 (Operate within the allowable absorbed energy.)				
Cushion			Either air cushion or rubber cushion can be selected					Either air cushion or rubber cushion can be selected				
Effective air cushion length		mm	8.6	13.4	13.4	15.4	15.4	8.6	13.4	13.4	15.4	15.4
Lubrication			Not required (use turbine oil class 1 ISO VG32 if necessary for lubrication)					Not required (use turbine oil class 1 ISO VG32 if necessary for lubrication)				
Stopping accuracy		mm	±1 (300 mm/s, no load)					±1 (300 mm/s, no load)				
Holding force		N	980	1569	2451	3922	6178	980	1569	2451	3922	6178
Allowable absorbed energy	J	With rubber cushion	0.9	1.6	1.6	3.3	5.8	0.9	1.6	1.6	3.3	5.8
	With air cushion	3.7	8.0	14.4	25.4	45.6	3.7	8.0	14.4	25.4	45.6	

## Electrical specification for brake valve

Descriptions	Specifications		
Rated voltage (V)	100 AC(50/60 Hz)	200 AC(50/60 Hz)	24 DC
Starting current (A)	0.056/0.044	0.028/0.022	0.075
Holding current (A)	0.028/0.022	0.014/0.011	0.075
Power consumption (W)	1.8/1.4		1.8
Thermal class	Class B (molded coil)		

\*1 : 100/200 VAC coil is available for 110/220 VAC (60 Hz).

\*2 : The valve specifications are the same as those of the standard model 4KB2. For details, refer to "Pneumatic Valves (CB-23SA)".

Contact CKD when placing an order, as model numbers differ.

## Stroke length

Bore size (mm)	Standard stroke length (mm)	Max. stroke length (mm)	Available stroke length (mm)	Min. stroke length (mm)
φ40	25/50/75/100	600	800	1
φ50				
φ63	150/200/250	700	1400	
φ80	300/350/400			
φ100	450/500	800	1500	

\*1 : The custom stroke length is available in 1 mm increments.

\*2 : If the maximum stroke is exceeded, product specifications may not be met, depending on operating conditions. Contact CKD in this case.

\*3 : The available stroke lengths for models with bellows are as shown below.

φ40: 500 mm  
φ50, φ63: 600 mm  
φ80, φ100: 750 mm

### Min. stroke length with switch

● T0/T5 type switch

Switch quantity	Different surface mounting				Same surface mounting				Center trunnion mounting				Rod side trunnion mounting Position cannot be detected at the rod side stroke end.	Head side trunnion mounting No position detection at head side stroke end.
	1	2	3	4	1	2	3	4	1	2	3	4	1	1
φ40	9	18	36	54	9	48(33)	78(64)	109(94)	81(81)	81(81)	164(142)	164(142)	38	38
φ50	9	18	36	54	9	18	36	54	112(112)	112(112)	121(121)	121(121)	51	53
φ63	10	19	38	57	10	19	38	57	85(73)	85(73)	91(91)	91(91)	41	42
φ80	10	20	39	59	10	20	39	59	96(79)	96(79)	99(99)	99(99)	41	47
φ100	10	20	40	60	10	20	40	60	101(84)	101(84)	105(105)	105(105)	47	53

\*1: The values in ( ) are of T\*V (radial lead wire).

\*2: When the stroke length is 15 mm or less, the two switches could turn ON at the same time. In this case, adjust switch mounting positions to be as far apart as possible.

● T8 type switch

Switch quantity	Different surface mounting				Same surface mounting				Center trunnion mounting				Rod side trunnion mounting Position cannot be detected at the rod side stroke end.	Head side trunnion mounting No position detection at head side stroke end.
	1	2	3	4	1	2	3	4	1	2	3	4	1	1
φ40	9	18	36	54	9	54(31)	84(62)	115(92)	87(87)	87(87)	178(148)	178(148)	41	41
φ50	9	18	36	54	9	18	36	54	116(116)	116(116)	121(121)	121(121)	54	55
φ63	10	19	38	57	10	19	38	57	89(77)	89(77)	99(99)	99(99)	44	44
φ80	10	20	39	59	10	20	39	59	100(75)	100(75)	111(111)	111(111)	43	49
φ100	10	20	40	60	10	20	40	60	105(80)	105(80)	117(117)	117(117)	49	55

\*1: The values in ( ) are of T\*V (radial lead wire).

\*2: When the stroke length is 15 mm or less, the two switches could turn ON at the same time. In this case, adjust switch mounting positions to be as far apart as possible.

● T2/T3 switch

Switch quantity	Different surface mounting				Same surface mounting				Center trunnion mounting				Rod side trunnion mounting Position cannot be detected at the rod side stroke end.	Head side trunnion mounting No position detection at head side stroke end.
	1	2	3	4	1	2	3	4	1	2	3	4	1	1
φ40	5	10	20	30	5	40(33)	70(64)	101(94)	69(60)	69(60)	152(121)	152(121)	32	32
φ50	5	10	20	30	5	10	20	30	71(62)	71(62)	71(61)	71(61)	31	32
φ63	6	11	21	32	6	11	21	32	77(68)	77(68)	77(68)	77(68)	37	38
φ80	6	11	22	33	6	11	22	33	88(79)	88(79)	88(80)	88(80)	37	43
φ100	6	11	22	33	6	11	22	33	93(84)	93(84)	93(85)	93(85)	43	49

\*1: The values in ( ) are of T\*V (radial lead wire).

\*2: When the stroke length is 15 mm or less, the two switches could turn ON at the same time. In this case, adjust switch mounting positions to be as far apart as possible.

● T1/T2Y/T3Y/T2W/T3W/T2YD switches

Switch quantity	Different surface mounting				Same surface mounting				Center trunnion mounting				Rod side trunnion mounting Position cannot be detected at the rod side stroke end.	Head side trunnion mounting No position detection at head side stroke end.
	1	2	3	4	1	2	3	4	1	2	3	4	1	1
φ40	6	11	22	33	6	62(49)	92(80)	123(110)	91(66)	91(66)	182(127)	182(127)	43	43
φ50	6	12	24	36	6	12	24	36	93(68)	93(68)	93(68)	93(68)	42	43
φ63	6	12	24	36	6	12	24	36	99(74)	99(74)	99(74)	99(74)	48	49
φ80	7	13	25	38	7	13	25	38	110(85)	110(85)	110(86)	110(86)	48	54
φ100	7	13	26	39	7	13	26	39	115(90)	115(90)	115(92)	115(92)	54	60

\*1: The values in ( ) are of T\*V (radial lead wire). T2YD does not have a radial lead wire (V).

\*2: When the stroke length is 15 mm or less, the two switches could turn ON at the same time. In this case, adjust switch mounting positions to be as far apart as possible.

- LCW
- LCR
- LCG
- LCX
- LCM
- STM
- STG
- STS/STL
- STR2
- UCA2
- ULK\*
- JSK/M2
- JSG**
- JSC3/JSC4
- USSD
- UFCD
- USC
- JSB3
- LMB
- LML
- HCM
- HCA
- LBC
- CAC4
- UCAC2
- CAC-N
- UCAC-N
- RCC2
- RCS
- PCC
- SHC
- MCP
- GLC
- MFC
- BBS
- RRC
- GRC
- RV3\*
- NHS
- HR
- LN
- Hand
- Chuk
- MecHnd/Chuk
- ShkAbs
- FJ
- FK
- SpdContr
- Ending

# JSG/JSG-V Series

## Switch specifications

● 1-color/2-color display/for AC magnetic field proof

Descriptions	Proximity 2-wire		Proximity 2-wire				Proximity 3-wire			Reed 2-wire (*4)				Proximity 2-wire		
	T1H/ T1V	T2H/T2V/ T2JH/T2JV	T2YH/ T2YV	T2WH/ T2WV	T3H/ T3V	T3PH/T3PV (custom)	T3YH/ T3YV	T3WH/ T3WV	T0H/T0V	T5H/T5V	T8H/T8V		T2YD			
Applications	For programmable controller, relay, compact solenoid valve	Dedicated for programmable controller			For programmable controller, relay				For programmable controller, relay	For programmable controller, relay, IC circuit (no indicator lamp), serial connection	For programmable controller, relay		For programmable controller			
Output method	-			NPN output	PNP output	NPN output	NPN output	-								
Pwr. supp. V.	-			10 to 28 VDC				-								
Load voltage	85 to 265 VAC	10 to 30 VDC	24 VDC ±10%		30 VDC or less			12/24 VDC	110 VAC	5/12/24 VDC	110 VAC	12/24 VDC	110 VAC	220 VAC	24 VDC ±10%	
Load current	5 to 100 mA	5 to 20 mA (*2)			100 mA or less		50 mA or less		5 to 50 mA	7 to 20 mA	≤50 mA	≤20 mA	5 to 50 mA	7 to 20 mA	7 to 10 mA	5 to 20 mA
Indicator lamp	LED (Lit when ON)	LED (Lit when ON)	Red/green LED (Lit when ON)	Red/green LED (Lit when ON)	LED (Lit when ON)	Yellow LED (Lit when ON)	Red/green LED (Lit when ON)	Red/green LED (Lit when ON)	LED (Lit when ON)		Without indicator lamp		LED (Lit when ON)		Red/green LED (Lit when ON)	
Leakage current	≤1 mA at 100 VAC, ≤2 mA at 200 VAC	1 mA or less			10 μA or less			0 mA				1 mA or less				
Weight g	1 m:33 3 m:87 5 m:142	1 m:18 3 m:49 5 m:80	1 m:33 3 m:87 5 m:142	1 m:18 3 m:49 5 m:80	1 m:18 3 m:49 5 m:80	1 m:33 3 m:87 5 m:142	1 m:18 3 m:49 5 m:80	1 m:18 3 m:49 5 m:80			1 m:33 3 m:87 5 m:142		1 m:61 3 m:166 5 m:272			

\*1 : Refer to Ending Page 1 for other switch specifications.

\*2 : The above max. load current is 20 mA at 25°C. The current is lower than 20 mA if the operating ambient temperature around the switch is higher than 25°C. (5 to 10 mA at 60°C)

\*3 : Switch for AC magnetic field (T2YD) cannot be used in DC magnetic field.

\*4 : Dimensions depend on switch model No. Refer to Ending Page 18 for details.

## Weight table

Unit: kg

Bore size (mm)	Weight for 0 mm stroke length						Added weight /50 mm stroke	Switch weight	Mounting bracket weight	Accessory weight	
	Basic (00)	Foot (LB)	Flange (FA, FB)	Eye bracket (CA)	Clevis bracket (CB)	Trunnion (TA, TB, TC)				I	Y
φ40	1.75	1.89	2.16	1.94	1.94	2.09	0.17	Refer to the weight in the switch specifications.	0.024	0.09	0.14
φ50	2.91	3.07	3.54	3.32	3.32	3.40	0.23		0.022	0.20	0.33
φ63	3.94	4.28	4.96	4.49	4.51	4.82	0.25		0.022	0.20	0.33
φ80	7.81	8.24	9.38	9.08	9.09	9.30	0.40		0.026	0.52	0.96
φ100	12.08	12.94	14.40	13.80	13.83	14.65	0.51		0.024	0.48	0.92

(Example) Product weight of JSG-LB-50B-200-T0H-D-Y

Product weight for stroke length 0 mm .....3.07 kg  
 Additional weight for stroke length 200 mm .....0.23 × 200/50=0.92 kg  
 Weight of 2 TOH switches .....0.018 × 2=0.036 kg  
 Weight of 2 mounting brackets .....0.022 × 2=0.044 kg  
 Weight of rod clevis .....0.33 kg  
 Product weight .....3.07+0.92+0.036+0.044+0.33=4.4 kg

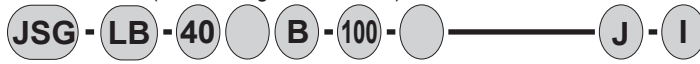
## Theoretical thrust table

(Unit: N)

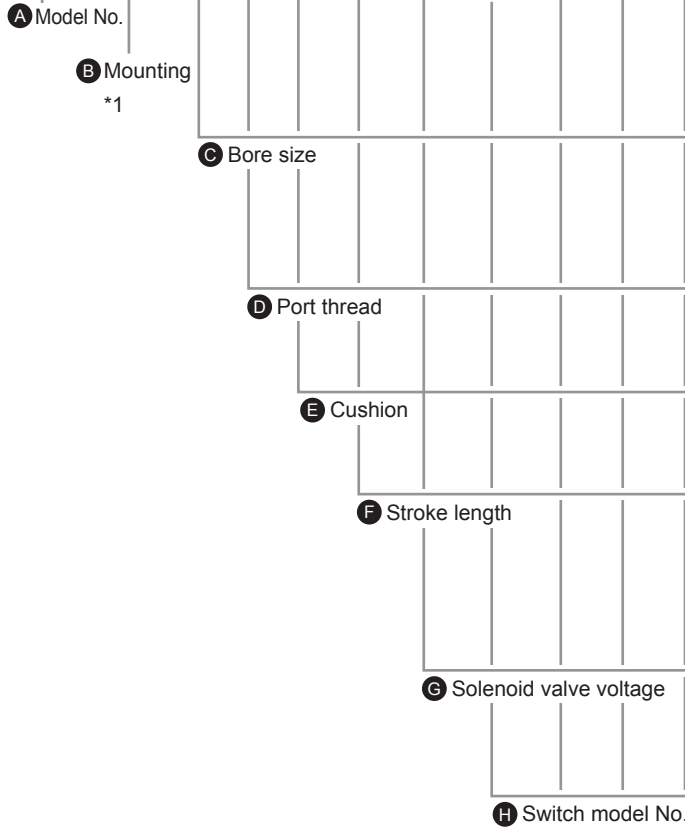
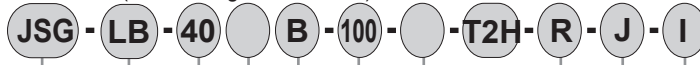
Bore size (mm)	Operating direction	Working pressure MPa											
		0.05	0.1	0.15	0.2	0.3	0.4	0.5	0.6	0.7	0.8	0.9	1.0
φ40	Push	62.8	1.26 × 10 <sup>2</sup>	1.88 × 10 <sup>2</sup>	2.51 × 10 <sup>2</sup>	3.77 × 10 <sup>2</sup>	5.03 × 10 <sup>2</sup>	6.28 × 10 <sup>2</sup>	7.54 × 10 <sup>2</sup>	8.80 × 10 <sup>2</sup>	1.01 × 10 <sup>3</sup>	1.13 × 10 <sup>3</sup>	1.26 × 10 <sup>3</sup>
	Pull	52.8	1.06 × 10 <sup>2</sup>	1.58 × 10 <sup>2</sup>	2.11 × 10 <sup>2</sup>	3.17 × 10 <sup>2</sup>	4.22 × 10 <sup>2</sup>	5.28 × 10 <sup>2</sup>	6.33 × 10 <sup>2</sup>	7.39 × 10 <sup>2</sup>	8.44 × 10 <sup>2</sup>	9.50 × 10 <sup>2</sup>	1.06 × 10 <sup>3</sup>
φ50	Push	98.2	1.96 × 10 <sup>2</sup>	2.95 × 10 <sup>2</sup>	3.93 × 10 <sup>2</sup>	5.89 × 10 <sup>2</sup>	7.85 × 10 <sup>2</sup>	9.82 × 10 <sup>2</sup>	1.18 × 10 <sup>3</sup>	1.37 × 10 <sup>3</sup>	1.57 × 10 <sup>3</sup>	1.77 × 10 <sup>3</sup>	1.96 × 10 <sup>3</sup>
	Pull	82.5	1.65 × 10 <sup>2</sup>	2.47 × 10 <sup>2</sup>	3.30 × 10 <sup>2</sup>	4.95 × 10 <sup>2</sup>	6.60 × 10 <sup>2</sup>	8.25 × 10 <sup>2</sup>	9.90 × 10 <sup>2</sup>	1.15 × 10 <sup>3</sup>	1.32 × 10 <sup>3</sup>	1.48 × 10 <sup>3</sup>	1.65 × 10 <sup>3</sup>
φ63	Push	1.56 × 10 <sup>2</sup>	3.12 × 10 <sup>2</sup>	4.68 × 10 <sup>2</sup>	6.23 × 10 <sup>2</sup>	9.35 × 10 <sup>2</sup>	1.25 × 10 <sup>3</sup>	1.56 × 10 <sup>3</sup>	1.87 × 10 <sup>3</sup>	2.18 × 10 <sup>3</sup>	2.49 × 10 <sup>3</sup>	2.81 × 10 <sup>3</sup>	3.12 × 10 <sup>3</sup>
	Pull	1.40 × 10 <sup>2</sup>	2.80 × 10 <sup>2</sup>	4.20 × 10 <sup>2</sup>	5.61 × 10 <sup>2</sup>	8.41 × 10 <sup>2</sup>	1.12 × 10 <sup>3</sup>	1.40 × 10 <sup>3</sup>	1.68 × 10 <sup>3</sup>	1.96 × 10 <sup>3</sup>	2.24 × 10 <sup>3</sup>	2.52 × 10 <sup>3</sup>	2.80 × 10 <sup>3</sup>
φ80	Push	2.51 × 10 <sup>2</sup>	5.03 × 10 <sup>2</sup>	7.54 × 10 <sup>2</sup>	1.01 × 10 <sup>3</sup>	1.51 × 10 <sup>3</sup>	2.01 × 10 <sup>3</sup>	2.51 × 10 <sup>3</sup>	3.02 × 10 <sup>3</sup>	3.52 × 10 <sup>3</sup>	4.02 × 10 <sup>3</sup>	4.52 × 10 <sup>3</sup>	5.03 × 10 <sup>3</sup>
	Pull	2.27 × 10 <sup>2</sup>	4.54 × 10 <sup>2</sup>	6.80 × 10 <sup>2</sup>	9.07 × 10 <sup>2</sup>	1.36 × 10 <sup>3</sup>	1.81 × 10 <sup>3</sup>	2.27 × 10 <sup>3</sup>	2.72 × 10 <sup>3</sup>	3.17 × 10 <sup>3</sup>	3.63 × 10 <sup>3</sup>	4.08 × 10 <sup>3</sup>	4.54 × 10 <sup>3</sup>
φ100	Push	3.93 × 10 <sup>2</sup>	7.85 × 10 <sup>2</sup>	1.18 × 10 <sup>3</sup>	1.57 × 10 <sup>3</sup>	2.36 × 10 <sup>3</sup>	3.14 × 10 <sup>3</sup>	3.93 × 10 <sup>3</sup>	4.71 × 10 <sup>3</sup>	5.50 × 10 <sup>3</sup>	6.28 × 10 <sup>3</sup>	7.07 × 10 <sup>3</sup>	7.85 × 10 <sup>3</sup>
	Pull	3.57 × 10 <sup>2</sup>	7.15 × 10 <sup>2</sup>	1.07 × 10 <sup>3</sup>	1.43 × 10 <sup>3</sup>	2.14 × 10 <sup>3</sup>	2.86 × 10 <sup>3</sup>	3.57 × 10 <sup>3</sup>	4.29 × 10 <sup>3</sup>	5.00 × 10 <sup>3</sup>	5.72 × 10 <sup>3</sup>	6.43 × 10 <sup>3</sup>	7.15 × 10 <sup>3</sup>

### How to order

Without switch (built-in magnet for switch)



With switch (built-in magnet for switch)



### ⚠ Precautions for model No. selection

- \*1 : Mounting bracket will be shipped with the product. (Trunnion is assembled at shipment.)
- \*2 : The custom stroke length is available in 1 mm increments.
- \*3 : When selecting TA or TB as mounting, the number of switches is limited to "H" (1 on head side) for TA, and "R" (1 on rod side) for TB.
- \*4 : "I" and "Y" cannot be selected together.

[Example of model No.]

### JSG-V-LB-40B-100-1-T2H-D-JI

Model: Tie rod cylinder with brake

- A** Model No. : Double acting, with valve for brake release
- B** Mounting : Axial foot
- C** Bore size : φ40 mm
- D** Port thread : Rc thread
- E** Cushion : With two-sided air cushion
- F** Stroke length : 100 mm
- G** Solenoid valve voltage : 100 VAC
- H** Switch model No. : Proximity T2H switch, lead wire 1 m
- I** Switch quantity : 2
- J** Option : With bellows
- K** Accessory : Rod eye (attachment)

**I** Switch quantity \*3

**J** Option

**K** Accessory \*4

Code		Content	A Model No.		
			Double acting	Double acting, brake release valve - V	
<b>B Mounting</b>					
00	Basic		●	●	
LB	Axial foot		●	●	
FA	Rod side flange		●	●	
FB	Head side flange		●	●	
CA	Eye bracket		●	●	
CB	Clevis bracket (pin and split pin attached)		●	●	
TA	Rod side trunnion		●	●	
TB	Head side trunnion		●	●	
TC	Intermediate trunnion		●	●	
<b>C Bore size (mm)</b>					
40	φ40		●	●	
50	φ50		●	●	
63	φ63		●	●	
80	φ80		●	●	
100	φ100		●	●	
<b>D Port thread</b>					
Blank	Rc thread		●	●	
N	NPT thread (custom order product)		●	●	
G	G thread (custom order product)		●	●	
<b>E Cushion</b>					
B	Two-sided air cushion (basic)		●	●	
D	Two-sided rubber cushion		●	●	
Note: The rubber cushion has a longer total length than the air cushion.					
<b>F Stroke length (mm)</b>					
Bore size	Stroke length *2	Available stroke length	Custom stroke length		
φ40	1 to 600	800	In 1 mm increments		
φ50		1200			
φ63		1400			
φ80	1 to 700	1500			
φ100	1 to 800				
<b>G Solenoid valve voltage</b>					
1	100 VAC			●	
2	200 VAC			●	
3	24 VDC			●	
4	12 VDC			●	
<b>H Switch model No.</b>					
Axial lead wire	Radial lead wire	Contact	Voltage AC DC	Display	Lead wire
T0H*	T0V*	Reed	● ●	1-color display	2-wire
T5H*	T5V*		● ●	Without indicator lamp	
T8H*	T8V*		● ●	1-color display	2-wire
T1H*	T1V*		● ●	1-color display	2-wire
T2H*	T2V*	Proximity	● ●	1-color display	2-wire
T3H*	T3V*		● ●	1-color display	3-wire
T3PH*	T3PV*		● ●	1-color display (custom order)	3-wire
T2WH*	T2WV*		● ●	2-color display	2-wire
T2YH*	T2YV*		● ●		
T3WH*	T3WV*		● ●	2-color display	3-wire
T3YH*	T3YV*		● ●		
T3PH*	T3PV*		● ●	1-color display (custom order)	3-wire
T2YD*	-		● ●	2-color display	2-wire
T2YDT*	-		● ●	AC magnetic field	
T2JH*	T2JV*	● ●	1-color display off-delay	2-wire	
<b>* Lead wire length</b>					
Blank	1 m (standard)		●	●	
3	3 m (option)		●	●	
5	5 m (option)		●	●	
<b>I Switch quantity</b>					
R	1 on rod side		●	●	
H	1 on head side		●	●	
D	2		●	●	
T	3		●	●	
<b>J Option</b>					
		Max. ambient temperature	Instantaneous ambient temperature		
J	Bellows	60°C	100°C	●	●
M	Piston rod material stainless steel		●	●	
<b>K Accessory</b>					
I	Rod eye		●	●	
Y	Rod clevis (pin and split pin attached)		●	●	
B1	Eye bracket		●	●	
B2	Clevis bracket (pin and split pin attached)		●	●	
B3	Eye bracket		●	●	
B4	Trunnion No. 2 bracket (2 pcs./set)		●	●	

LCW
LCR
LCG
LCX
LCM
STM
STG
STS/STL
STR2
UCA2
ULK*
JSK/M2
<b>JSG</b>
JSC3/JSC4
USSD
UFCD
USC
JSB3
LMB
LML
HCM
HCA
LBC
CAC4
UCAC2
CAC-N
UCAC-N
RCC2
RCS
PCC
SHC
MCP
GLC
MFC
BBS
RRC
GRC
RV3*
NHS
HR
LN
Hand
Chuk
MecHnd/Chuk
ShkAbs
FJ
FK
SpdContr
Ending

- LCW
- LCR
- LCG
- LCX
- LCM
- STM
- STG
- STS/STL
- STR2
- UCA2
- ULK\*
- JSK/M2
- JSG**
- JSC3/JSC4
- USSD
- UFCD
- USC
- JSB3
- LMB
- LML
- HCM
- HCA
- LBC
- CAC4
- UCAC2
- CAC-N
- UCAC-N
- RCC2
- RCS
- PCC
- SHC
- MCP
- GLC
- MFC
- BBS
- RRC
- GRC
- RV3\*
- NHS
- HR
- LN
- Hand
- Chuk
- MecHnd/Chuk
- ShkAbs
- FJ
- FK
- SpdContr
- Ending

## How to order switch

### ● Switch body + mounting bracket set

**SCG - T0H - 40**

Switch model No. (Item ④ on the previous page)    Bore size (Item ③ on the previous page)

### ● Switch body only

**SW - T0H**

Switch model No. (Item ④ on the previous page)

### ● Switch mounting bracket set

**SCG - T - 40**

Mounting bracket    Bore size (Item ③ on the previous page)

Note: Contact CKD when using an environment-friendly T type switch.

## How to order mounting bracket

Bore size (mm)		φ40	φ50	φ63	φ80	φ100
Mounting bracket						
Foot (LB)	*1	JSG-LB-40	JSG-LB-50	JSG-LB-63	SCG-LB-80	SCG-LB-100
Flange (FA) (FB)	*2	JSG-FA-40	JSG-FA-50	JSG-FA-63	SCG-FA-80	SCG-FA-100
Eye bracket (CA)		SCG-CA-40	SCG-CA-50	SCG-CA-63	SCG-CA-80	SCG-CA-100
Clevis bracket (CB)	*3	SCG-CB-40	SCG-CB-50	SCG-CB-63	SCG-CB-80	SCG-CB-100

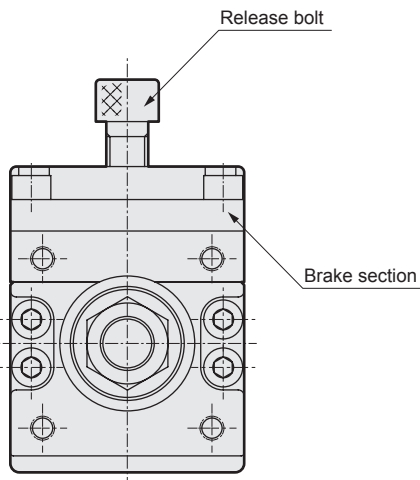
\*1: The foot (LB) mounting bracket is provided as 2 pcs./set.

\*2: Specify the flange (FA) with bellows as "JSG-FA-(bore size)-J".

\*3: Pin, split pin and plain washer are attached.

\*4: All mounting brackets have mounting bolts attached.

## How to release the brake section manually



The brakes are released by screwing a bolt into the manual release port (female threads on top of brakes).

(The brake may go out if the bolt is screwed in too far.)

Refer to the appropriate screw-in volume in the table below.)

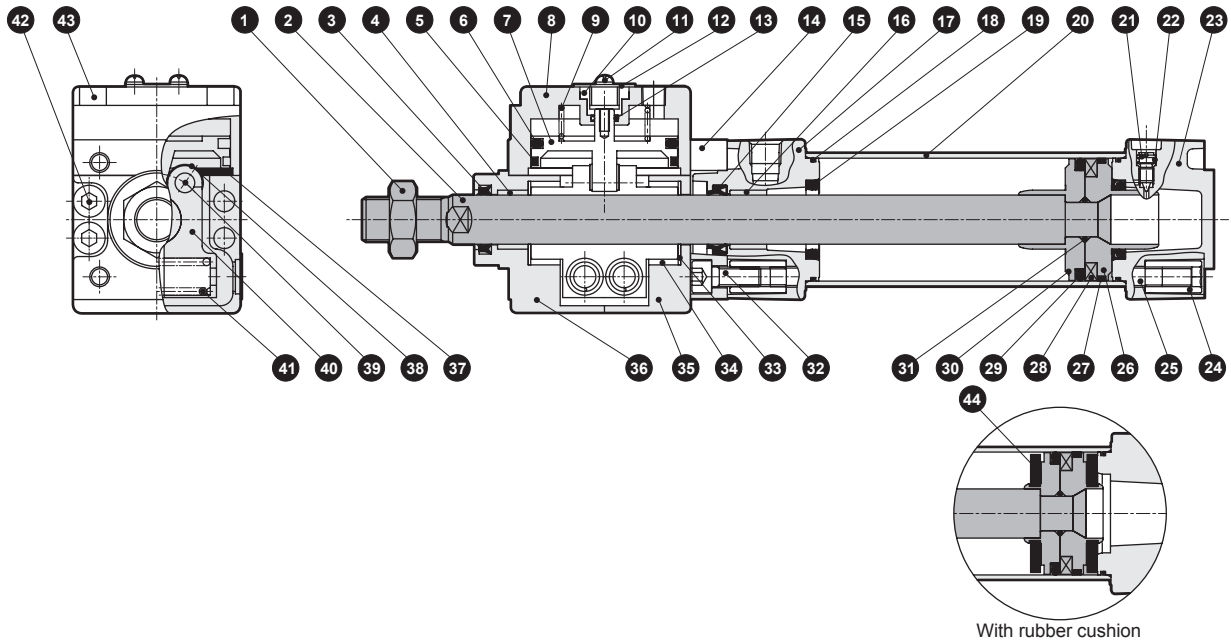
Always remove the bolt during normal use.

### Release bolt size

Bore size	Bolt screw diameter	Bolt length		Appropriate screw-in volume
		JSG	JSG-V	
φ40	M12×1.75	16 or more	40 or more	3 rotations or less
φ50	M12×1.75	16 or more	40 or more	4 rotations or less
φ63	M14×2	16 or more	40 or more	4 rotations or less
φ80	M16×2	20 or more	40 or more	4.5 rotations or less
φ100	M18×2.5	20 or more	50 or more	5 rotations or less

## Internal structure and parts list

● JSG



No.	Part name	Material	Remarks	No.	Part name	Material	Remarks
1	Rod nut	Steel	Nickel plating	24	Round nut	Steel	Zinc chromate
2	Piston rod	Steel	Industrial chrome plating	25	Tie rod	Steel	Zinc chromate
3	Dust wiper	Nitrile rubber		26	Piston H	φ40: Aluminum alloy φ50 to φ100: Aluminum alloy die-casting	
4	Bush	Oil impregnated bearing alloy		27	Wear ring	Polyacetal resin	
5	Wear ring	Acetal resin		28	Magnet	Resin	
6	Piston packing B	Nitrile rubber		29	Piston packing	Nitrile rubber	
7	Brake piston	Cast iron	Phosphate coating	30	Piston R	φ40: Aluminum alloy φ50 to φ100: Aluminum alloy die-casting	
8	Body H	Aluminum casting	Chromate	31	Piston gasket	Nitrile rubber	
9	Spring	Piano wire		32	Hexagon socket head cap screw	Alloy steel	Black finish
10	Piston guide	Cast iron	Phosphate coating	33	Thrust washer		
11	Phillips pan head machine screw/captive washer	Steel	Zinc chromate	34	Bush	Dry bearing	
12	Dust cover	Aluminum alloy	Alumite	35	Body R	Aluminum casting	Chromate
13	Gasket	Nitrile rubber		36	Body F	Aluminum casting	Chromate
14	Joint plate	Aluminum alloy	Alumite	37	Cushion rubber	Urethane rubber	
15	Rod packing	Nitrile rubber		38	Bearing		
16	Bush	Oil impregnated bearing alloy		39	Pin	Alloy steel	
17	Rod cover	Aluminum alloy die-casting	Paint	40	Brake shoe metal	Cast iron	Nickel plating
18	Cylinder gasket	Nitrile rubber		41	Spring	Piano wire	
19	Cushion packing	Nitrile rubber, steel	Zinc chromate	42	Hexagon socket head cap screw	Alloy steel	Black finish
20	Cylinder tube	Aluminum alloy	Hard alumite	43	Hexagon socket head cap screw	Alloy steel	Black finish
21	Cushion needle	Copper alloy	Nickel plating	44	Cushion rubber	Urethane rubber	
22	Needle gasket	Nitrile rubber					
23	Head cover	Aluminum alloy die-casting	Paint				

Note: Never disassemble the brake section, as the powerful spring installed can be dangerous.

## Repair parts list

● With air cushion

Bore size (mm)	Kit No.	Repair parts No.
φ40	JSG-40BK	3 15 18
φ50	JSG-50BK	19 22 27
φ63	JSG-63BK	29
φ80	JSG-80BK	
φ100	JSG-100BK	

Note: Specify the kit No. when placing an order.

● With rubber cushion

Bore size (mm)	Kit No.	Repair parts No.
φ40	JSG-40DK	3 15 18
φ50	JSG-50DK	22 27 29
φ63	JSG-63DK	44
φ80	JSG-80DK	
φ100	JSG-100DK	

Note: Specify the kit No. when placing an order.

## Material of mounting bracket

Mounting	Material	Remarks
LB	Steel	Nickel plating
FA/FB	Steel	Paint
CA/CB	Cast iron	Paint
TA/TB/TC	Cast iron	Paint

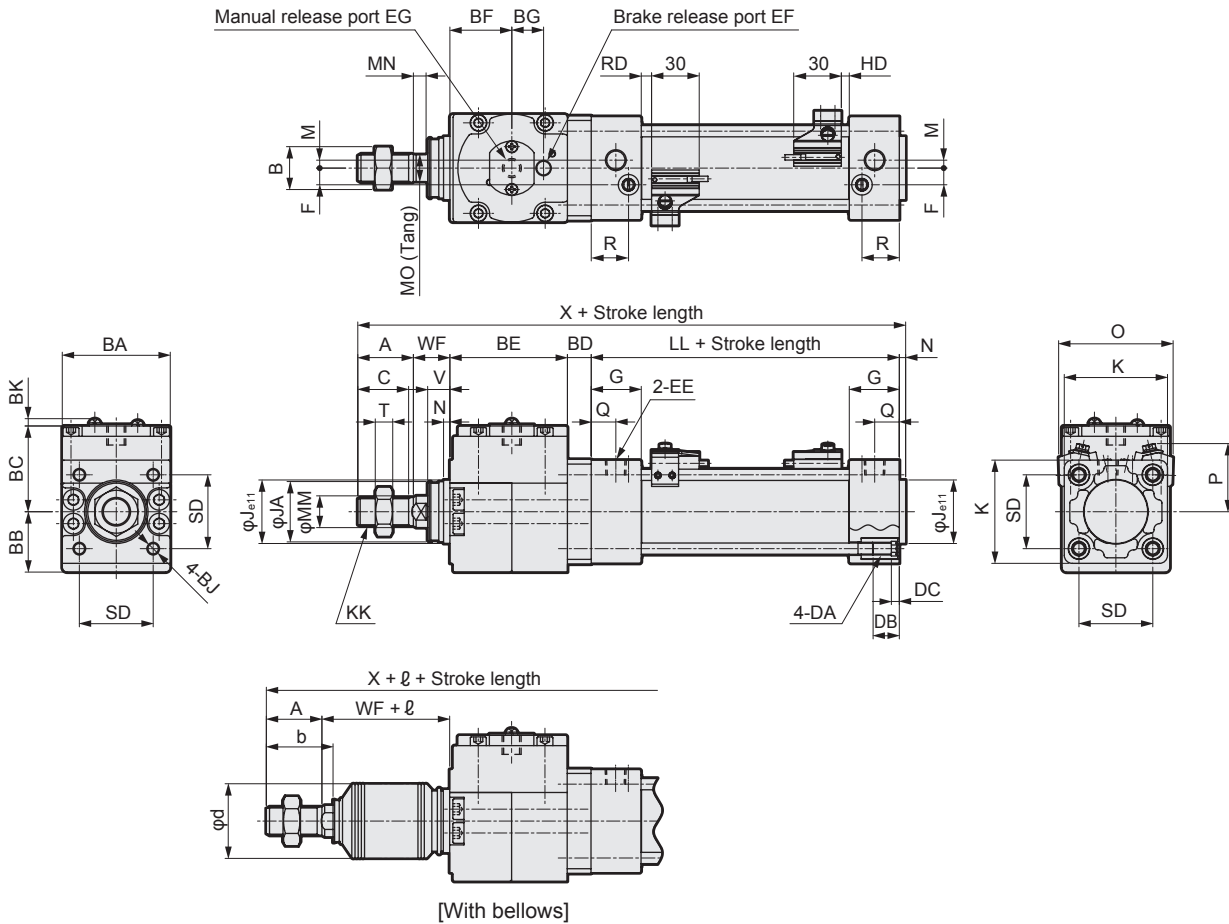
LCW  
LCR  
LCG  
LCX  
LCM  
STM  
STG  
STS/STL  
STR2  
UCA2  
ULK\*  
JSK/M2  
**JSG**  
JSC3/JSC4  
USSD  
UFCD  
USC  
JSB3  
LMB  
LML  
HCM  
HCA  
LBC  
CAC4  
UCAC2  
CAC-N  
UCAC-N  
RCC2  
RCS  
PCC  
SHC  
MCP  
GLC  
MFC  
BBS  
RRC  
GRC  
RV3\*  
NHS  
HR  
LN  
Hand  
Chuk  
MecHnd/Chuk  
ShkAbs  
FJ  
FK  
SpdContr  
Ending

# JSG/JSG-V Series

## Dimensions



### ● Basic (00)



\*1: Dimensions in ( ) are for the rubber cushion.

\*2: Refer to page 748 for RD, HD and protruding dimensions of other switches.

\*3: Refer to page 747 for dimensions of type with valves (JSG-V).

Code		Basic (00) basic dimensions																					
Bore size (mm)	Basic (00) basic dimensions																						
	A	B	BA	BB	BC	BD	BE	BF	BG	BJ	BK	C	DA	DB	DC	EE	EF	EG	F	G	J	JA	K
φ40	30	22	57	31.5	46.5	14	63	32.5	20	M6 Depth 12	4.6	27	M6	16	5	Rc1/4	Rc1/8	M12	9	27	35	31	52
φ50	35	27	68	38	54	15	74	39	20	M8 Depth 12	4.6	32	M8	16	5	Rc1/4	Rc1/8	M12	10.5	31.5	40	38	65
φ63	35	27	78	43	59	15	88	44.5	27	M8 Depth 14	4.6	32	M8	16	5	Rc3/8	Rc1/4	M14	12	31.5	45	38	75
φ80	40	32	98	53	72.5	23	108	54.5	27	M10 Depth 16	4.6	37	M10	16	5	Rc3/8	Rc1/4	M16	14	38	45	43	95
φ100	40	41	118	63	80.5	22.5	128.5	65.5	35	M10 Depth 18	4.6	37	M10	16	5	Rc1/2	Rc3/8	M18	15	38	55	51	114

Code		Basic (00) basic dimensions														With switch					
Bore size (mm)	KK	*1 LL	M	MM	MN	MO	N	Q	R	SD	T	V	WF	*1 X	O	P	T0, T5, T2, T3, T3P		T2W, T3W		
																	RD	HD	RD	HD	
φ40	M14×1.5	84(90)	4	16	6	14	4	14	19	38	8	13	21	216(222)	66	41	5(8)	5(8)	7.5(10.5)	7.5(10.5)	
φ50	M18×1.5	94(102)	5	20	8	17	4	15.5	23.5	46.5	11	14	23	245(253)	72	43	6.5(10.5)	5(9)	9(13)	7(11)	
φ63	M18×1.5	94(102)	9	20	8	17	4	16.5	21.5	56.5	11	14	23	259(267)	83	48	6.5(10.5)	5(9)	9(13)	7(11)	
φ80	M22×1.5	114(124)	11.5	25	11	22	4	19	28	72	13	20	32	321(331)	104	57	12.5(17.5)	6(11)	15(20)	8(13)	
φ100	M26×1.5	114(124)	17	30	13	27	4	19	28	89	16	20	32	341(351)	121	63	12(17)	6.5(11.5)	14.5(19.5)	8.5(13.5)	

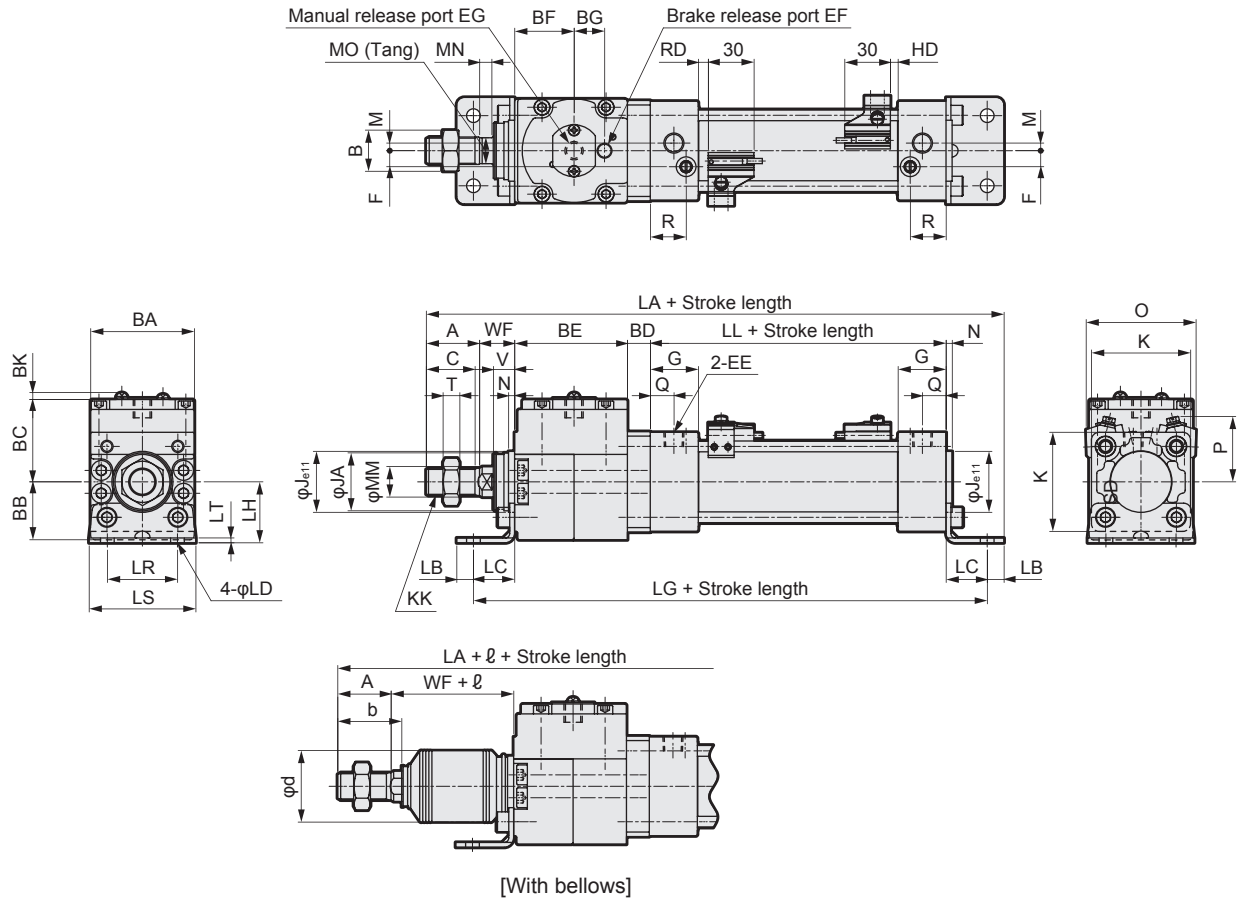
  

Code		With bellows																						
Bore size (mm)	A	b	d	WF	ℓ																			
					50 or less	Over 50 to 100	Over 100 to 150	Over 150 to 200	Over 200 to 300	Over 300 to 400	Over 400 to 500	Over 500 to 600	Over 600 to 700	Over 700 to 750	Over 750 to 800	Over 800								
φ40	30	35	40	21	30	43	55	68	93	118	143	0.35 x stroke-32												
φ50	35	42	47	23	31	44	56	69	94	119	144	169	0.35 x stroke-41											
φ63	35	42	47	23	31	44	56	69	94	119	144	169	0.35 x stroke-41											
φ80	40	50	53	32	29	42	54	67	92	117	142	167	192	204	217	0.35 x stroke-63								
φ100	40	52.5	61	32	29	42	54	67	92	117	142	167	192	204	217	0.35 x stroke-63								

## Dimensions



### ● Axial foot (LB)



\*1: Dimensions in ( ) are for the rubber cushion.  
 \*2: Refer to page 748 for RD, HD and protruding dimensions of other switches.  
 \*3: Refer to page 747 for dimensions of type with valves (JSG-V).

Code	Axial foot (LB) basic dimensions																								
Bore size (mm)	A	B	BA	BB	BC	BD	BE	BF	BG	BK	C	EE	EF	EG	F	G	J	JA	K	KK	*1 LL	M	MM	MN	MO
φ40	30	22	57	31.5	46.5	14	63	32.5	20	4.6	27	Rc1/4	Rc1/8	M12	9	27	35	31	52	M14×1.5	84(90)	4	16	6	14
φ50	35	27	68	38	54	15	74	39	20	4.6	32	Rc1/4	Rc1/8	M12	10.5	31.5	40	38	65	M18×1.5	94(102)	5	20	8	17
φ63	35	27	78	43	59	15	88	44.5	27	4.6	32	Rc3/8	Rc1/4	M14	12	31.5	45	38	75	M18×1.5	94(102)	9	20	8	17
φ80	40	32	98	53	72.5	23	108	54.5	27	4.6	37	Rc3/8	Rc1/4	M16	14	38	45	43	95	M22×1.5	114(124)	11.5	25	11	22
φ100	40	41	118	63	80.5	22.5	128.5	65.5	35	4.6	37	Rc1/2	Rc3/8	M18	15	38	55	51	114	M26×1.5	114(124)	17	30	13	27

Code	Mounting dimensions												With switch								
Bore size (mm)	N	Q	R	T	V	WF	*1 LA	LB	LC	LD	*1 LG	LH	LR	LS	LT	O	P	T0, T5, T2, T3, T3P	T2W, T3W		
																		RD	HD	RD	HD
φ40	4	14	19	8	13	21	247(253)	11	24	9	209(215)	33	38	55	3.2	66	41	5(8)	5(8)	7.5(10.5)	7.5(10.5)
φ50	4	15.5	23.5	11	14	23	279(287)	11	27	9	237(245)	40	46	70	3.2	72	43	6.5(10.5)	5(9)	9(13)	7(11)
φ63	4	16.5	21.5	11	14	23	296(304)	14	27	12	251(259)	48	56	80	4.5	83	48	6.5(10.5)	5(9)	9(13)	7(11)
φ80	4	19	28	13	20	32	361(371)	14	30	12	305(315)	55	72	95	4.5	104	57	12.5(17.5)	6(11)	15(20)	8(13)
φ100	4	19	28	16	20	32	385(395)	16	32	14	329(339)	65	89	114	6	121	63	12(17)	6.5(11.5)	14.5(19.5)	8.5(13.5)

Code	With bellows																		
Bore size (mm)	A	b	d	WF	ℓ														
					50 or less	Over 50 to 100	Over 100 to 150	Over 150 to 200	Over 200 to 300	Over 300 to 400	Over 400 to 500	Over 500 to 600	Over 600 to 700	Over 700 to 800	Over 800				
φ40	30	35	40	21	30	43	55	68	93	118	143	0.35 x stroke-32							
φ50	35	42	47	23	31	44	56	69	94	119	144	169	0.35 x stroke-41						
φ63	35	42	47	23	31	44	56	69	94	119	144	169	0.35 x stroke-41						
φ80	40	50	53	32	29	42	54	67	92	117	142	167	192	204	217	0.35 x stroke-63			
φ100	40	52.5	61	32	29	42	54	67	92	117	142	167	192	204	217	0.35 x stroke-63			

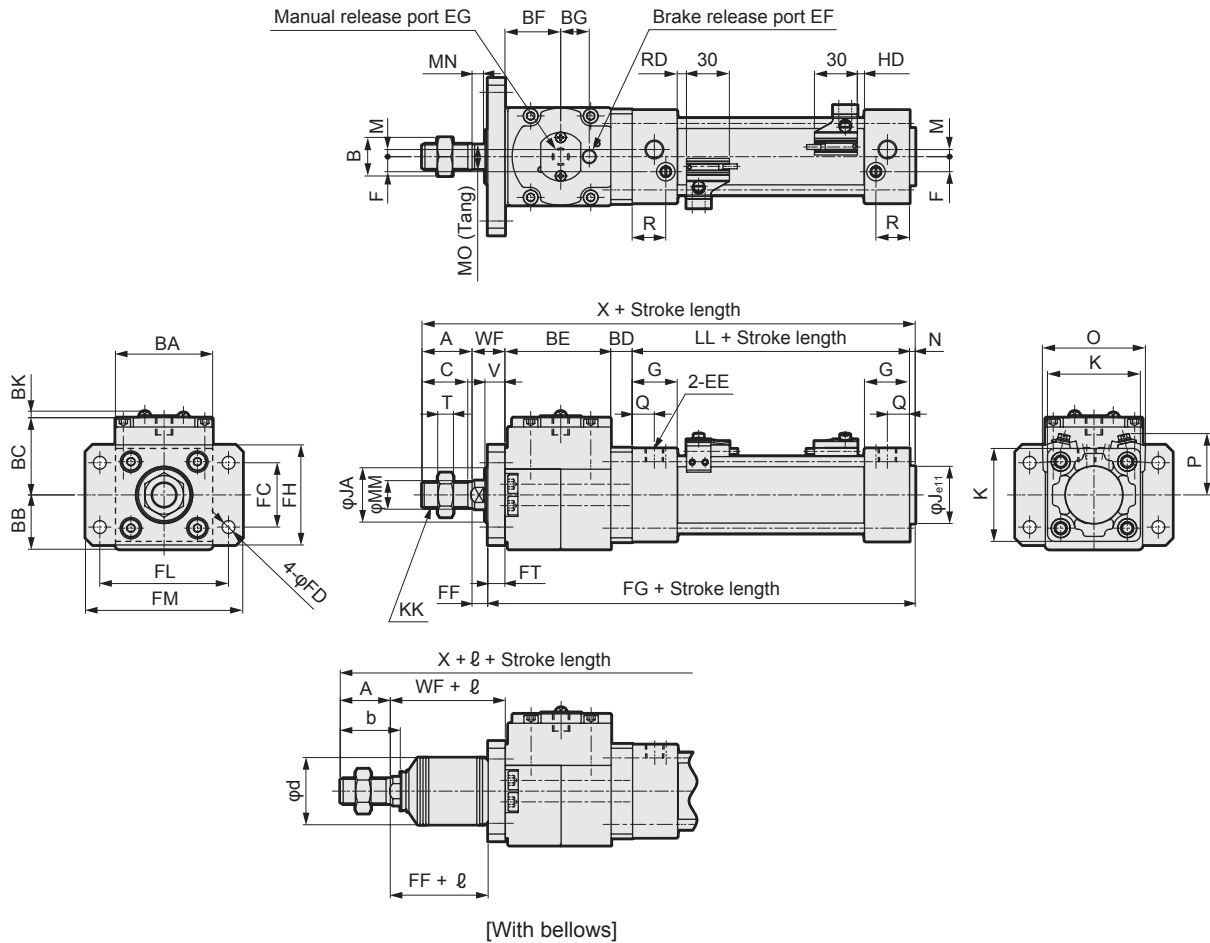
- LCW
- LCR
- LCG
- LCX
- LCM
- STM
- STG
- STS/STL
- STR2
- UCA2
- ULK\*
- JSK/M2
- JSG**
- JSC3/JSC4
- USSD
- UFCD
- USC
- JSB3
- LMB
- LML
- HCM
- HCA
- LBC
- CAC4
- UCAC2
- CAC-N
- UCAC-N
- RCC2
- RCS
- PCC
- SHC
- MCP
- GLC
- MFC
- BBS
- RRC
- GRC
- RV3\*
- NHS
- HR
- LN
- Hand
- Chuk
- MecHnd/Chuk
- ShkAbs
- FJ
- FK
- SpdContr
- Ending



## Dimensions



### ● Rod side flange (FA)



\*1: Dimensions in ( ) are for the rubber cushion.

\*2: Refer to page 748 for RD, HD and protruding dimensions of other switches.

\*3: Refer to page 747 for dimensions of type with valves (JSG-V).

Code	Rod side flange (FA) basic dimensions																								
Bore size (mm)	A	B	BA	BB	BC	BD	BE	BF	BG	BK	C	EE	EF	EG	F	G	J	JA	K	KK	*1 LL	M	MM	MN	MO
φ40	30	22	57	31.5	46.5	14	63	32.5	20	4.6	27	Rc1/4	Rc1/8	M12	9	27	35	31	52	M14×1.5	84(90)	4	16	6	14
φ50	35	27	68	38	54	15	74	39	20	4.6	32	Rc1/4	Rc1/8	M12	10.5	31.5	40	38	65	M18×1.5	94(102)	5	20	8	17
φ63	35	27	78	43	59	15	88	44.5	27	4.6	32	Rc3/8	Rc1/4	M14	12	31.5	45	38	75	M18×1.5	94(102)	9	20	8	17
φ80	40	32	98	53	72.5	23	108	54.5	27	4.6	37	Rc3/8	Rc1/4	M16	14	38	45	43	95	M22×1.5	114(124)	11.5	25	11	22
φ100	40	41	118	63	80.5	22.5	128.5	65.5	35	4.6	37	Rc1/2	Rc3/8	M18	15	38	55	51	114	M26×1.5	114(124)	17	30	13	27

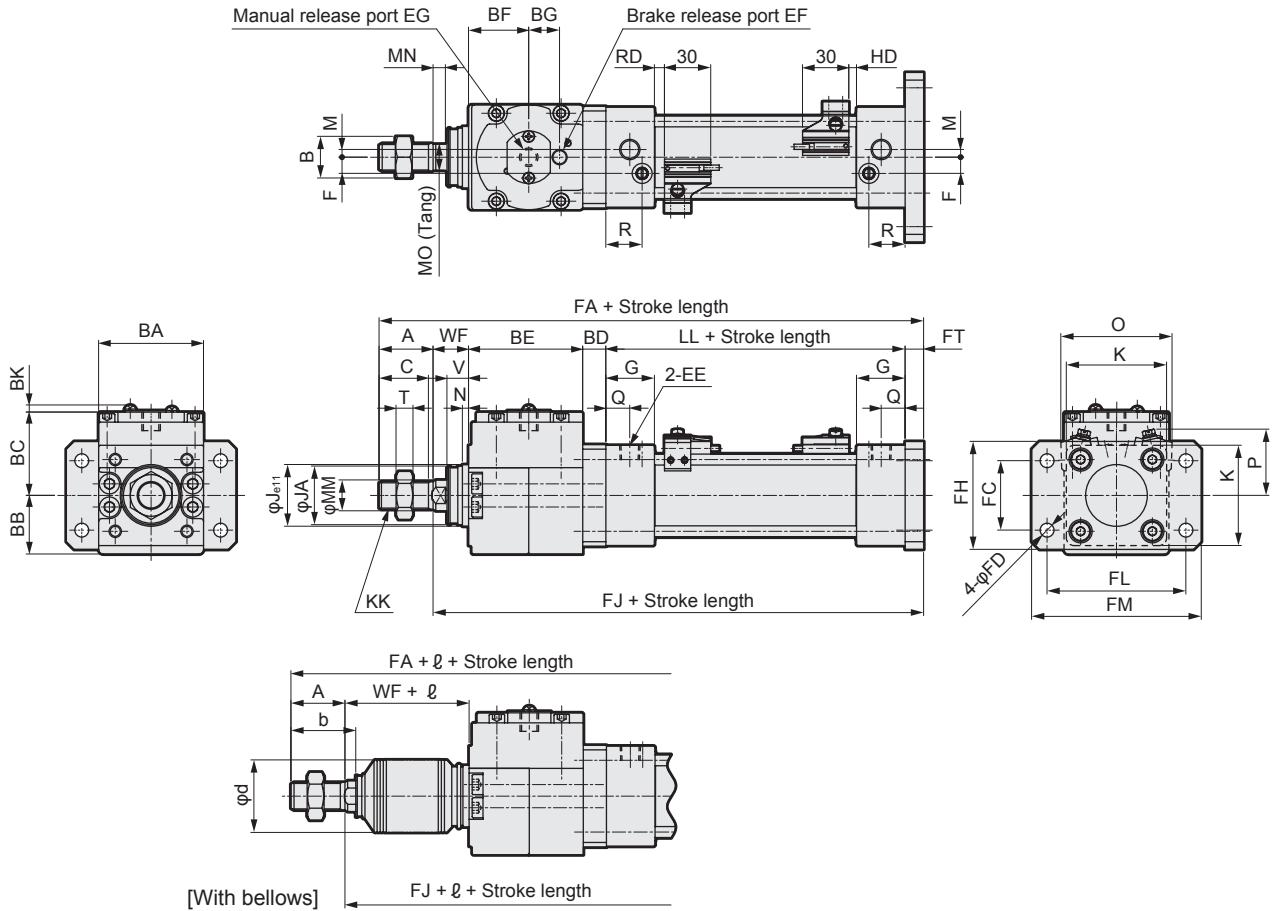
Code	Mounting dimensions										With switch										
Bore size (mm)	N	Q	R	T	V	WF	*1 X	FC	FD	FF	*1 FG	FH	FL	FM	FT	O	P	T0, T5, T2, T3, T3P		T2W, T3W	
																		RD	HD	RD	HD
φ40	4	14	19	8	13	21	216(222)	46	9	11	175(181)	65	83	101	10	66	41	5(8)	5(8)	7.5(10.5)	7.5(10.5)
φ50	4	15.5	23.5	11	14	23	245(253)	52	9	11	199(207)	77	100	120	12	72	43	6.5(10.5)	5(9)	9(13)	7(11)
φ63	4	16.5	21.5	11	14	23	259(267)	62	9	11	213(221)	92	115	135	12	83	48	6.5(10.5)	5(9)	9(13)	7(11)
φ80	4	19	28	13	20	32	321(331)	63	12	16	265(275)	100	126	153	16	104	57	12.5(17.5)	6(11)	15(20)	8(13)
φ100	4	19	28	16	20	32	341(351)	75	14	16	285(295)	120	150	178	16	121	63	12(17)	6.5(11.5)	14.5(19.5)	8.5(13.5)

Code	With bellows																
Bore size (mm)	A	b	d	WF	ℓ												
					50 or less	Over 50 to 100	Over 100 to 150	Over 150 to 200	Over 200 to 300	Over 300 to 400	Over 400 to 500	Over 500 to 600	Over 600 to 700	Over 700 to 800	Over 800		
φ40	30	35	40	21	30	43	55	68	93	118	143	0.35 x stroke-32					
φ50	35	42	47	23	31	44	56	69	94	119	144	169	0.35 x stroke-41				
φ63	35	42	47	23	31	44	56	69	94	119	144	169	0.35 x stroke-41				
φ80	40	50	53	32	29	42	54	67	92	117	142	167	192	204	217	0.35 x stroke-63	
φ100	40	52.5	61	32	29	42	54	67	92	117	142	167	192	204	217	0.35 x stroke-63	

## Dimensions

### ● Head side flange (FB)



\*1: Dimensions in ( ) are for the rubber cushion.

\*2: Refer to page 748 for RD, HD and protruding dimensions of other switches.

\*3: Refer to page 747 for dimensions of type with valves (JSG-V).

Code	Head side flange (FB) basic dimensions																								
Bore size (mm)	A	B	BA	BB	BC	BD	BE	BF	BG	BK	C	EE	EF	EG	F	G	J	JA	K	KK	*1 LL	M	MM	MN	MO
φ40	30	22	57	31.5	46.5	14	63	32.5	20	4.6	27	Rc1/4	Rc1/8	M12	9	27	35	31	52	M14×1.5	84(90)	4	16	6	14
φ50	35	27	68	38	54	15	74	39	20	4.6	32	Rc1/4	Rc1/8	M12	10.5	31.5	40	38	65	M18×1.5	94(102)	5	20	8	17
φ63	35	27	78	43	59	15	88	44.5	27	4.6	32	Rc3/8	Rc1/4	M14	12	31.5	45	38	75	M18×1.5	94(102)	9	20	8	17
φ80	40	32	98	53	72.5	23	108	54.5	27	4.6	37	Rc3/8	Rc1/4	M16	14	38	45	43	95	M22×1.5	114(124)	11.5	25	11	22
φ100	40	41	118	63	80.5	22.5	128.5	65.5	35	4.6	37	Rc1/2	Rc3/8	M18	15	38	55	51	114	M26×1.5	114(124)	17	30	13	27

Code	Mounting dimensions												With switch							
Bore size (mm)	N	Q	R	T	V	WF	*1 FA	FC	FD	FH	*1 FJ	FL	FM	FT	O	P	T0, T1, T2, T3, T3P		T2W, T3W	
																	RD	HD	RD	HD
φ40	4	14	19	8	13	21	222(228)	46	9	65	192(198)	83	101	10	66	41	5(8)	5(8)	7.5(10.5)	7.5(10.5)
φ50	4	15.5	23.5	11	14	23	253(261)	52	9	77	218(226)	100	120	12	72	43	6.5(10.5)	5(9)	9(13)	7(11)
φ63	4	16.5	21.5	11	14	23	267(275)	62	9	92	232(240)	115	135	12	83	48	6.5(10.5)	5(9)	9(13)	7(11)
φ80	4	19	28	13	20	32	333(343)	63	12	100	293(303)	126	153	16	104	57	12.5(17.5)	6(11)	15(20)	8(13)
φ100	4	19	28	16	20	32	353(363)	75	14	120	313(323)	150	178	16	121	63	12(17)	6.5(11.5)	14.5(19.5)	8.5(13.5)

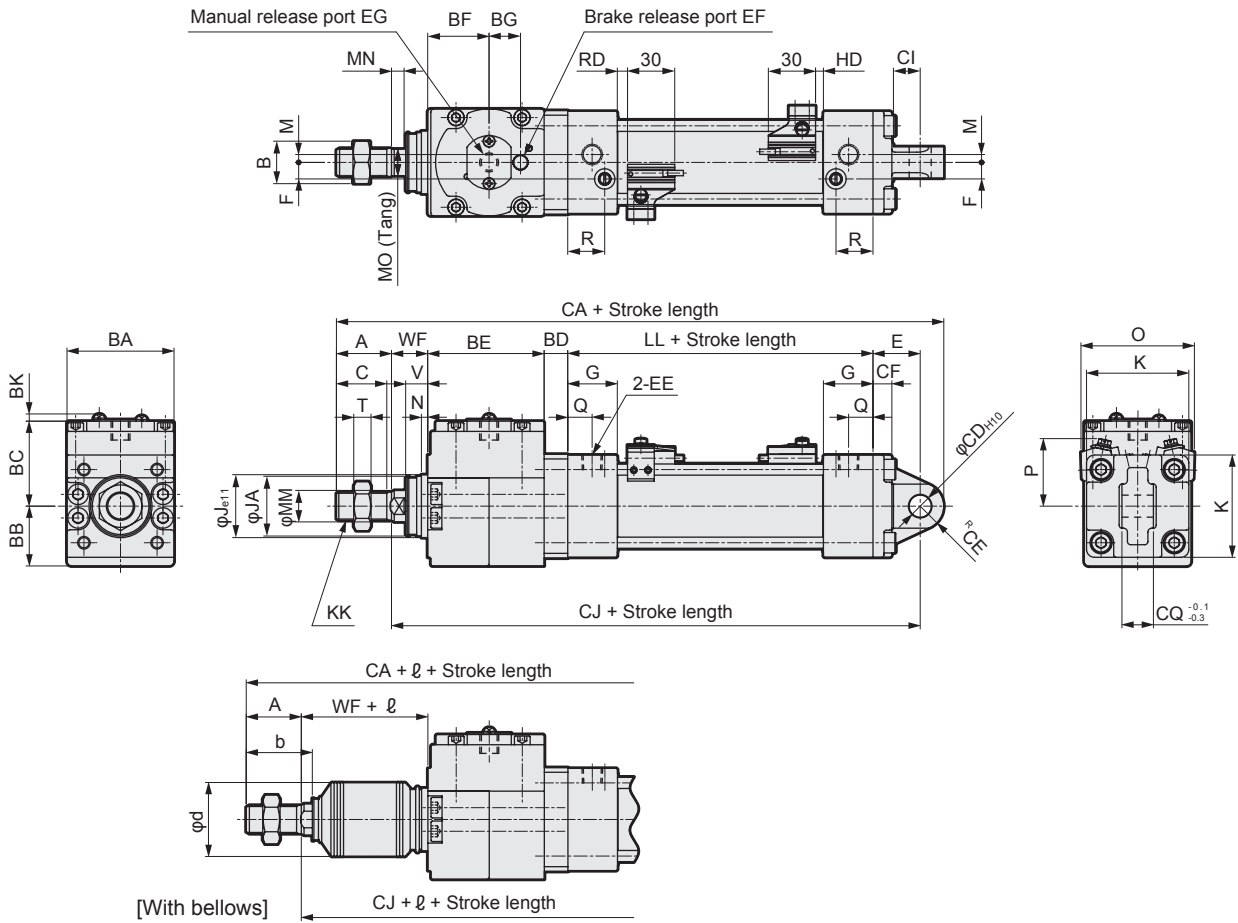
Code	With bellows																	
Bore size (mm)	A	b	d	WF	ℓ													
					50 or less	Over 50 to 100	Over 100 to 150	Over 150 to 200	Over 200 to 300	Over 300 to 400	Over 400 to 500	Over 500 to 600	Over 600 to 700	Over 700 to 800	Over 800			
φ40	30	35	40	21	30	43	55	68	93	118	143	0.35 x stroke-32						
φ50	35	42	47	23	31	44	56	69	94	119	144	169	0.35 x stroke-41					
φ63	35	42	47	23	31	44	56	69	94	119	144	169	0.35 x stroke-41					
φ80	40	50	53	32	29	42	54	67	92	117	142	167	192	204	217	0.35 x stroke-63		
φ100	40	52.5	61	32	29	42	54	67	92	117	142	167	192	204	217	0.35 x stroke-63		

- LCW
- LCR
- LCG
- LCX
- LCM
- STM
- STG
- STS/STL
- STR2
- UCA2
- ULK\*
- JSK/M2
- JSG**
- JSC3/JSC4
- USSD
- UFCD
- USC
- JSB3
- LMB
- LML
- HCM
- HCA
- LBC
- CAC4
- UCAC2
- CAC-N
- UCAC-N
- RCC2
- RCS
- PCC
- SHC
- MCP
- GLC
- MFC
- BBS
- RRC
- GRC
- RV3\*
- NHS
- HR
- LN
- Hand
- Chuk
- MecHnd/Chuk
- ShkAbs
- FJ
- FK
- SpdContr
- Ending

## Dimensions



### ● Eye bracket (CA)



\*1: Dimensions in ( ) are for the rubber cushion.

\*2: Refer to page 748 for RD, HD and protruding dimensions of other switches.

\*3: Refer to page 747 for dimensions of type with valves (JSG-V).

Code	Eye bracket (CA) basic dimensions																								
Bore size (mm)	A	B	BA	BB	BC	BD	BE	BF	BG	BK	C	EE	EF	EG	F	G	J	JA	K	KK	*1 LL	M	MM	MN	MO
φ40	30	22	57	31.5	46.5	14	63	32.5	20	4.6	27	Rc1/4	Rc1/8	M12	9	27	35	31	52	M14×1.5	84(90)	4	16	6	14
φ50	35	27	68	38	54	15	74	39	20	4.6	32	Rc1/4	Rc1/8	M12	10.5	31.5	40	38	65	M18×1.5	94(102)	5	20	8	17
φ63	35	27	78	43	59	15	88	44.5	27	4.6	32	Rc3/8	Rc1/4	M14	12	31.5	45	38	75	M18×1.5	94(102)	9	20	8	17
φ80	40	32	98	53	72.5	23	108	54.5	27	4.6	37	Rc3/8	Rc1/4	M16	14	38	45	43	95	M22×1.5	114(124)	11.5	25	11	22
φ100	40	41	118	63	80.5	22.5	128.5	65.5	35	4.6	37	Rc1/2	Rc3/8	M18	15	38	55	51	114	M26×1.5	114(124)	17	30	13	27

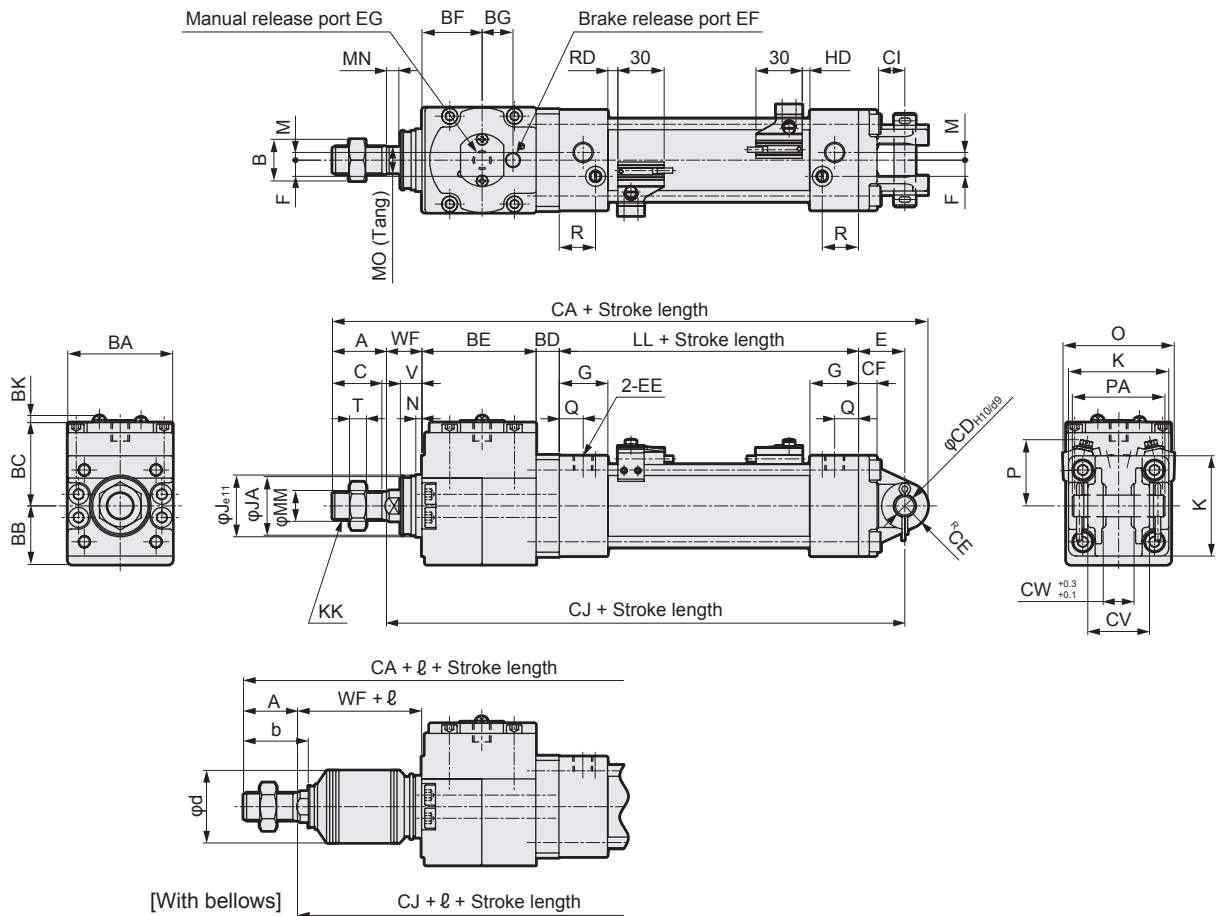
Code	Mounting dimensions													With switch						
Bore size (mm)	N	Q	R	T	V	WF	*1 FA	CD	CE	CF	CI	*1 CJ	CQ	E	O	P	T0, T5, T2, T3, T3P		T2W, T3W	
																	RD	HD	RD	HD
φ40	4	14	19	8	13	21	246(252)	10	11	9	13	205(211)	14	23	66	41	5(8)	5(8)	7.5(10.5)	7.5(10.5)
φ50	4	15.5	23.5	11	14	23	286(294)	14	15	12	17	236(244)	20	30	72	43	6.5(10.5)	5(9)	9(13)	7(11)
φ63	4	16.5	21.5	11	14	23	300(308)	14	15	12	17	250(258)	20	30	83	48	6.5(10.5)	5(9)	9(13)	7(11)
φ80	4	19	28	13	20	32	382(392)	22	23	15	26	319(329)	30	42	104	57	12.5(17.5)	6(11)	15(20)	8(13)
φ100	4	19	28	16	20	32	402(412)	22	23	15	26	339(349)	30	42	121	63	12(17)	6.5(11.5)	14.5(19.5)	8.5(13.5)

Code	With bellows																
Bore size (mm)	A	b	d	WF	ℓ												
					50 or less	Over 50 to 100	Over 100 to 150	Over 150 to 200	Over 200 to 300	Over 300 to 400	Over 400 to 500	Over 500 to 600	Over 600 to 700	Over 700 to 800	Over 800		
φ40	30	35	40	21	30	43	55	68	93	118	143	0.35 x stroke-32					
φ50	35	42	47	23	31	44	56	69	94	119	144	169	0.35 x stroke-41				
φ63	35	42	47	23	31	44	56	69	94	119	144	169	0.35 x stroke-41				
φ80	40	50	53	32	29	42	54	67	92	117	142	167	192	204	217	0.35 x stroke-63	
φ100	40	52.5	61	32	29	42	54	67	92	117	142	167	192	204	217	0.35 x stroke-63	

## Dimensions

● Clevis bracket (CB)



\*1: Dimensions in ( ) are for the rubber cushion.

\*2: Refer to page 748 for RD, HD and protruding dimensions of other switches.

\*3: Refer to page 747 for dimensions of type with valves (JSG-V).

Code	Clevis bracket (CB) basic dimensions																								
Bore size (mm)	A	B	BA	BB	BC	BD	BE	BF	BG	BK	C	EE	EF	EG	F	G	J	JA	K	KK	*1 LL	M	MM	MN	MO
φ40	30	22	57	31.5	46.5	14	63	32.5	20	4.6	27	Rc1/4	Rc1/8	M12	9	27	35	31	52	M14×1.5	84(90)	4	16	6	14
φ50	35	27	68	38	54	15	74	39	20	4.6	32	Rc1/4	Rc1/8	M12	10.5	31.5	40	38	65	M18×1.5	94(102)	5	20	8	17
φ63	35	27	78	43	59	15	88	44.5	27	4.6	32	Rc3/8	Rc1/4	M14	12	31.5	45	38	75	M18×1.5	94(102)	9	20	8	17
φ80	40	32	98	53	72.5	23	108	54.5	27	4.6	37	Rc3/8	Rc1/4	M16	14	38	45	43	95	M22×1.5	114(124)	11.5	25	11	22
φ100	40	41	118	63	80.5	22.5	128.5	65.5	35	4.6	37	Rc1/2	Rc3/8	M18	15	38	55	51	114	M26×1.5	114(124)	17	30	13	27

Code	Mounting dimensions											With switch										
Bore size (mm)	N	Q	R	T	V	WF	*1 CA	CD	CE	CF	CI	*1 CJ	CV	CW	E	PA	O	P	T0, T5, T2, T3, T3P		T2W, T3W	
																			RD	HD	RD	HD
φ40	4	14	19	8	13	21	246(252)	10	11	9	13	205(211)	28	14	23	44	66	41	5(8)	5(8)	7.5(10.5)	7.5(10.5)
φ50	4	15.5	23.5	11	14	23	286(294)	14	15	12	17	236(244)	40	20	30	60	72	43	6.5(10.5)	5(9)	9(13)	7(11)
φ63	4	16.5	21.5	11	14	23	300(308)	14	15	12	17	250(258)	40	20	30	60	83	48	6.5(10.5)	5(9)	9(13)	7(11)
φ80	4	19	28	13	20	32	382(392)	22	23	15	26	319(329)	60	30	42	82	104	57	12.5(17.5)	6(11)	15(20)	8(13)
φ100	4	19	28	16	20	32	402(412)	22	23	15	26	339(349)	60	30	42	82	121	63	12(17)	6.5(11.5)	14.5(19.5)	8.5(13.5)

Code	With bellows																
Bore size (mm)	A	b	d	WF	ℓ												
					50 or less	Over 50 to 100	Over 100 to 150	Over 150 to 200	Over 200 to 300	Over 300 to 400	Over 400 to 500	Over 500 to 600	Over 600 to 700	Over 700 to 800	Over 800		
φ40	30	35	40	21	30	43	55	68	93	118	143	0.35 x stroke-32					
φ50	35	42	47	23	31	44	56	69	94	119	144	169	0.35 x stroke-41				
φ63	35	42	47	23	31	44	56	69	94	119	144	169	0.35 x stroke-41				
φ80	40	50	53	32	29	42	54	67	92	117	142	167	192	204	217	0.35 x stroke-63	
φ100	40	52.5	61	32	29	42	54	67	92	117	142	167	192	204	217	0.35 x stroke-63	

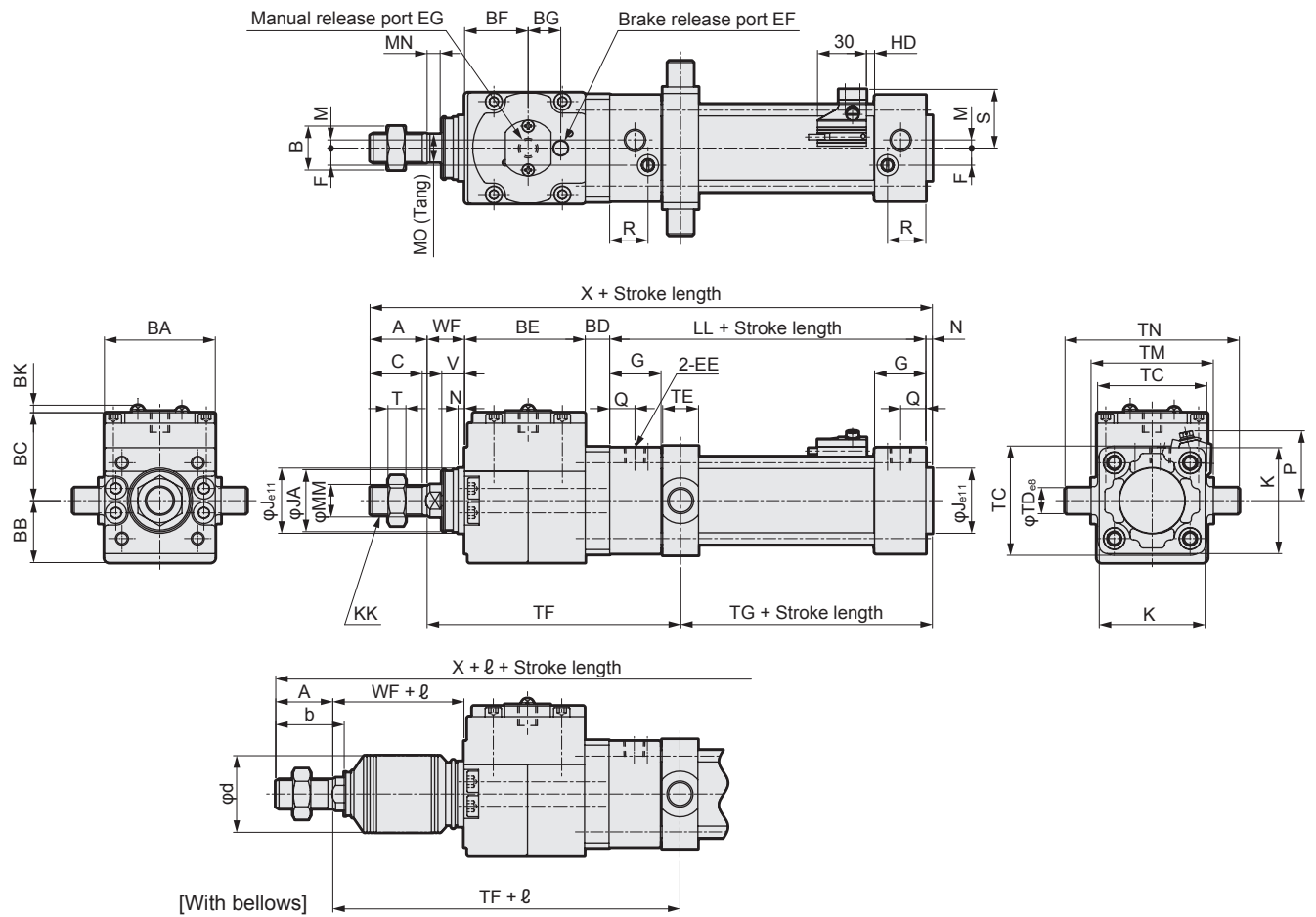
- LCW
- LCR
- LCG
- LCX
- LCM
- STM
- STG
- STS/STL
- STR2
- UCA2
- ULK\*
- JSK/M2
- JSG**
- JSC3/JSC4
- USSD
- UFCD
- USC
- JSB3
- LMB
- LML**
- HCM
- HCA
- LBC
- CAC4
- UCAC2
- CAC-N
- UCAC-N
- RCC2
- RCS
- PCC
- SHC
- MCP
- GLC
- MFC
- BBS
- RRC
- GRC
- RV3\*
- NHS
- HR
- LN
- Hand
- Chuk
- MecHnd/Chuk
- ShkAbs
- FJ
- FK
- SpdContr
- Ending

# JSG/JSG-V Series

## Dimensions



### ● Rod side trunnion (TA)



\*1: Dimensions in ( ) are for the rubber cushion.  
 \*2: Refer to page 748 for RD, HD and protruding dimensions of other switches.  
 \*3: Refer to page 747 for dimensions of type with valves (JSG-V).

Code	Rod side trunnion (TA) basic dimensions																								
Bore size (mm)	A	B	BA	BB	BC	BD	BE	BF	BG	BK	C	EE	EF	EG	F	G	J	JA	K	KK	*1 LL	M	MM	MN	MO
φ40	30	22	57	31.5	46.5	14	63	32.5	20	4.6	27	Rc1/4	Rc1/8	M12	9	27	35	31	52	M14×1.5	84(90)	4	16	6	14
φ50	35	27	68	38	54	15	74	39	20	4.6	32	Rc1/4	Rc1/8	M12	10.5	31.5	40	38	65	M18×1.5	94(102)	5	20	8	17
φ63	35	27	78	43	59	15	88	44.5	27	4.6	32	Rc3/8	Rc1/4	M14	12	31.5	45	38	75	M18×1.5	94(102)	9	20	8	17
φ80	40	32	98	53	72.5	23	108	54.5	27	4.6	37	Rc3/8	Rc1/4	M16	14	38	45	43	95	M22×1.5	114(124)	11.5	25	11	22
φ100	40	41	118	63	80.5	22.5	128.5	65.5	35	4.6	37	Rc1/2	Rc3/8	M18	15	38	55	51	114	M26×1.5	114(124)	17	30	13	27

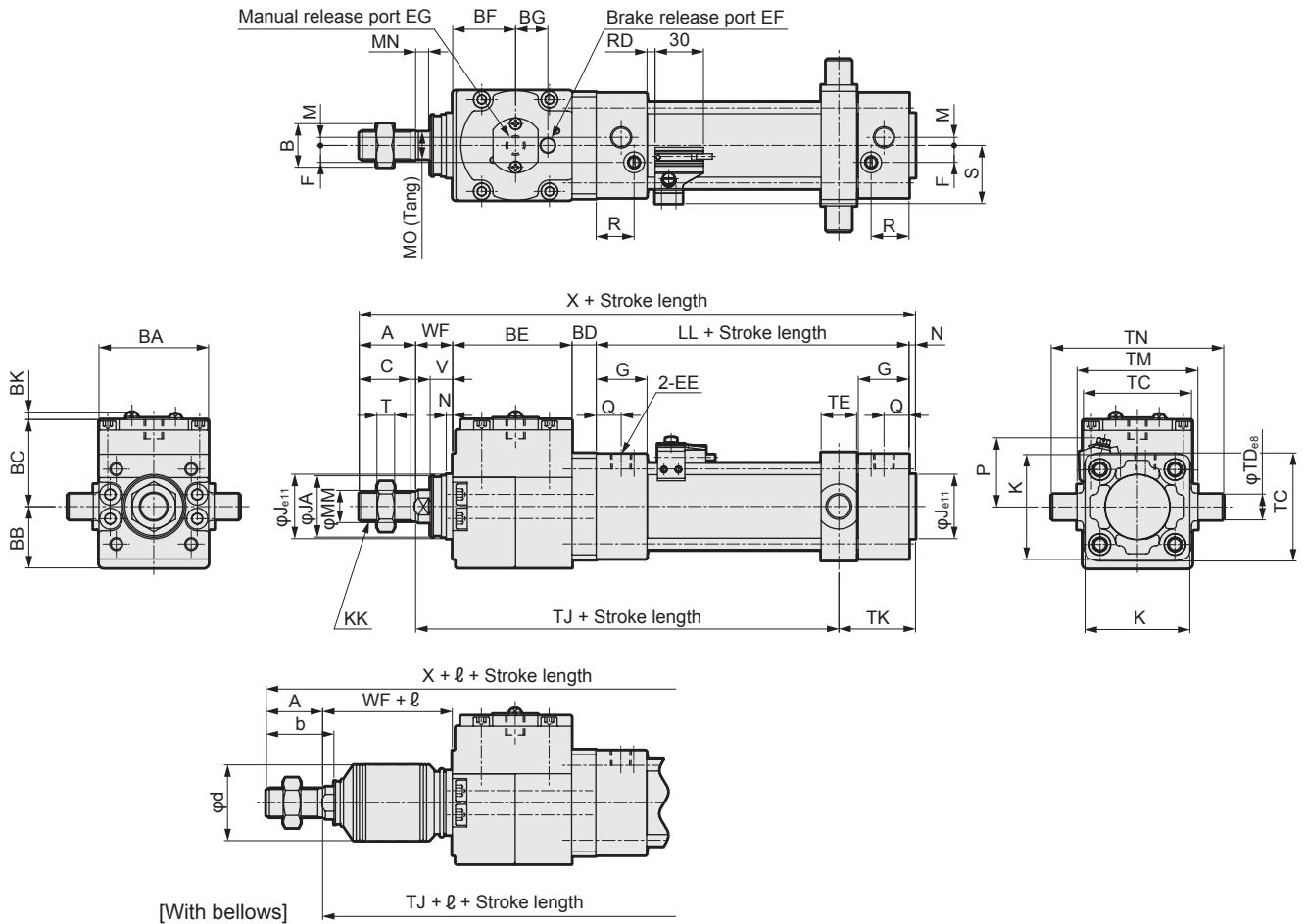
Code	Mounting dimensions												With switch					
Bore size (mm)	N	Q	R	T	V	WF	*1 X	TC	TD	TE	TF	*1 TG	TM	TN	S	P	T0, T5, T2, T3, T3P	T2W, T3W
																	HD	HD
φ40	4	14	19	8	13	21	216(222)	57	16	22	137	49(55)	63	95	33	41	5(8)	7.5(10.5)
φ50	4	15.5	23.5	11	14	23	245(253)	67	16	22	155.5	54.5(62.5)	75	107	36	43	5(9)	7(11)
φ63	4	16.5	21.5	11	14	23	259(267)	82	20	28	172.5	51.5(59.5)	90	130	41.5	48	5(9)	7(11)
φ80	4	19	28	13	20	32	321(331)	100	20	34	219	62(72)	110	150	52	57	6(11)	8(13)
φ100	4	19	28	16	20	32	341(351)	121	25	40	242	59(69)	132	182	60.5	63	6.5(11.5)	8.5(13.5)

Code	With bellows																
Bore size (mm)	A	b	d	WF	ℓ												
					50 or less	Over 50 to 100	Over 100 to 150	Over 150 to 200	Over 200 to 300	Over 300 to 400	Over 400 to 500	Over 500 to 600	Over 600 to 700	Over 700 to 800	Over 800		
φ40	30	35	40	21	30	43	55	68	93	118	143	0.35 x stroke-32					
φ50	35	42	47	23	31	44	56	69	94	119	144	169	0.35 x stroke-41				
φ63	35	42	47	23	31	44	56	69	94	119	144	169	0.35 x stroke-41				
φ80	40	50	53	32	29	42	54	67	92	117	142	167	192	204	217	0.35 x stroke-63	
φ100	40	52.5	61	32	29	42	54	67	92	117	142	167	192	204	217	0.35 x stroke-63	

## Dimensions

### ● Head side trunnion (TB)



\*1: Dimensions in ( ) are for the rubber cushion.

\*2: Refer to page 748 for RD, HD and protruding dimensions of other switches.

\*3: Refer to page 747 for dimensions of type with valves (JSG-V).

Code	Head side trunnion (TB) basic dimensions																								
Bore size (mm)	A	B	BA	BB	BC	BD	BE	BF	BG	BK	C	EE	EF	EG	F	G	J	JA	K	KK	*1 LL	M	MM	MN	MO
φ40	30	22	57	31.5	46.5	14	63	32.5	20	4.6	27	Rc1/4	Rc1/8	M12	9	27	35	31	52	M14×1.5	84(90)	4	16	6	14
φ50	35	27	68	38	54	15	74	39	20	4.6	32	Rc1/4	Rc1/8	M12	10.5	31.5	40	38	65	M18×1.5	94(102)	5	20	8	17
φ63	35	27	78	43	59	15	88	44.5	27	4.6	32	Rc3/8	Rc1/4	M14	12	31.5	45	38	75	M18×1.5	94(102)	9	20	8	17
φ80	40	32	98	53	72.5	23	108	54.5	27	4.6	37	Rc3/8	Rc1/4	M16	14	38	45	43	95	M22×1.5	114(124)	11.5	25	11	22
φ100	40	41	118	63	80.5	22.5	128.5	65.5	35	4.6	37	Rc1/2	Rc3/8	M18	15	38	55	51	114	M26×1.5	114(124)	17	30	13	27

Code	Mounting dimensions										With switch							
Bore size (mm)	N	Q	R	T	V	WF	*1 X	TC	TD	TE	*1 TJ	TK	TM	TN	S	P	T0, T5, T2, T3, T3P	T2W, T3W
																	RD	RD
φ40	4	14	19	8	13	21	216(222)	57	16	22	143(149)	43	63	95	33	41	5(8)	7.5(10.5)
φ50	4	15.5	23.5	11	14	23	245(253)	67	16	22	162.5(170.5)	47.5	75	107	36	43	6.5(10.5)	9(13)
φ63	4	16.5	21.5	11	14	23	259(267)	82	20	28	173.5(181.5)	50.5	90	130	41.5	48	6.5(10.5)	9(13)
φ80	4	19	28	13	20	32	321(331)	100	20	34	221(231)	60	110	150	52	57	12.5(17.5)	15(20)
φ100	4	19	28	16	20	32	341(351)	121	25	40	238(248)	63	132	182	60.5	63	12(17)	14.5(19.5)

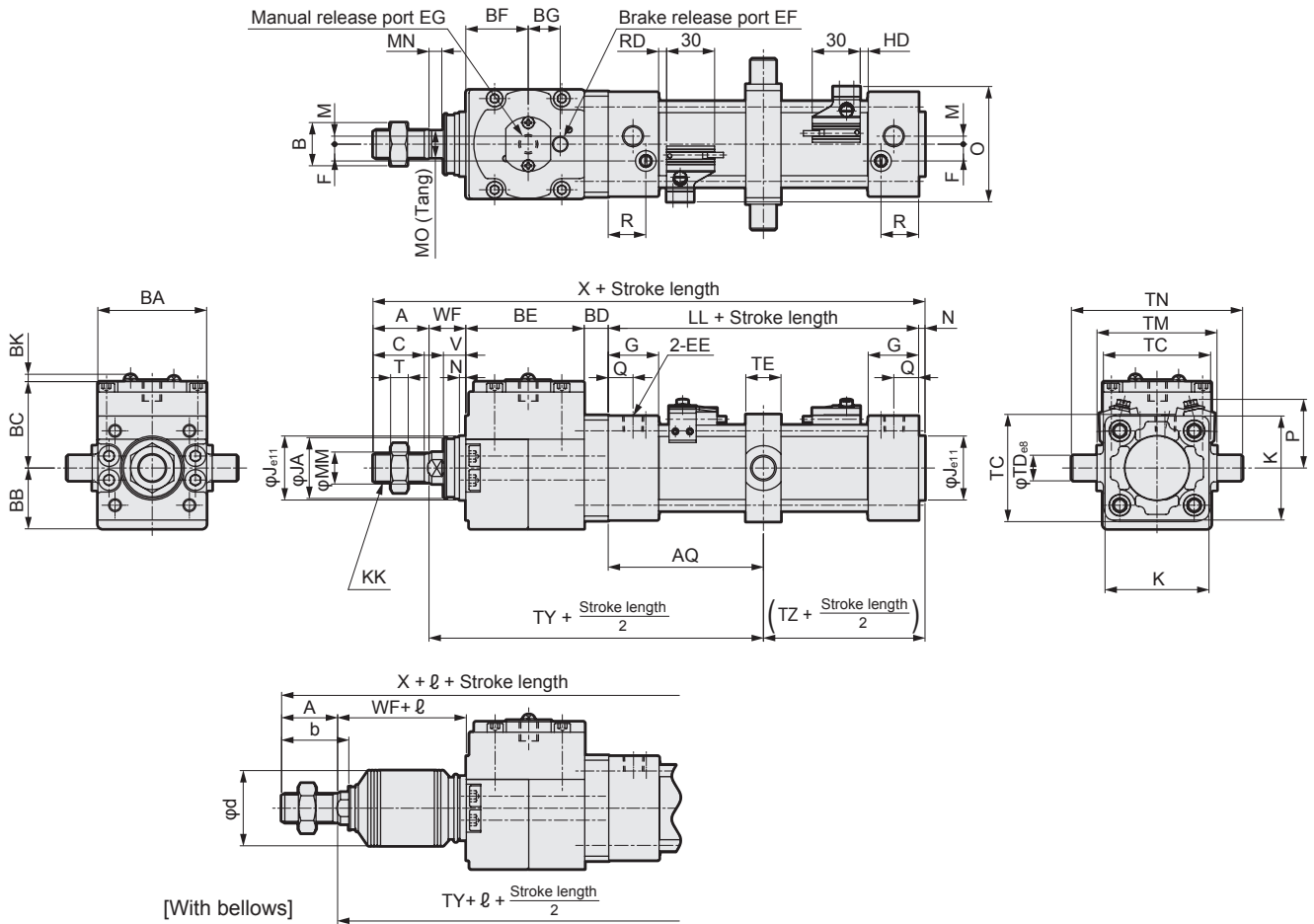
Code	With bellows																	
Bore size (mm)	A	b	d	WF	ℓ													
					50 or less	Over 50 to 100	Over 100 to 150	Over 150 to 200	Over 200 to 300	Over 300 to 400	Over 400 to 500	Over 500 to 600	Over 600 to 700	Over 700 to 800	Over 800			
φ40	30	35	40	21	30	43	55	68	93	118	143	0.35 x stroke-32						
φ50	35	42	47	23	31	44	56	69	94	119	144	169	0.35 x stroke-41					
φ63	35	42	47	23	31	44	56	69	94	119	144	169	0.35 x stroke-41					
φ80	40	50	53	32	29	42	54	67	92	117	142	167	192	204	217	0.35 x stroke-63		
φ100	40	52.5	61	32	29	42	54	67	92	117	142	167	192	204	217	0.35 x stroke-63		

- LCW
- LCR
- LCG
- LCX
- LCM
- STM
- STG
- STS/STL
- STR2
- UCA2
- ULK\*
- JSK/M2
- JSG**
- JSC3/JSC4
- USSD
- UFCD
- USC
- JSB3
- LMB
- LML
- HCM
- HCA
- LBC
- CAC4
- UCAC2
- CAC-N
- UCAC-N
- RCC2
- RCS
- PCC
- SHC
- MCP
- GLC
- MFC
- BBS
- RRC
- GRC
- RV3\*
- NHS
- HR
- LN
- Hand
- Chuk
- MecHnd/Chuk
- ShkAbs
- FJ
- FK
- SpdContr
- Ending

## Dimensions



### ● Intermediate trunnion (TC)



\*1: Dimensions in ( ) are for the rubber cushion.  
 \*2: Refer to page 748 for RD, HD and protruding dimensions of other switches.  
 \*3: Refer to page 747 for dimensions of type with valves (JSG-V).

Code	Intermediate trunnion (TC) basic dimensions																								
Bore size (mm)	A	B	BA	BB	BC	BD	BE	BF	BG	BK	C	EE	EF	EG	F	G	J	JA	K	KK	*1 LL	M	MM	MN	MO
φ40	30	22	57	31.5	46.5	14	63	32.5	20	4.6	27	Rc1/4	Rc1/8	M12	9	27	35	31	52	M14×1.5	84(90)	4	16	6	14
φ50	35	27	68	38	54	15	74	39	20	4.6	32	Rc1/4	Rc1/8	M12	10.5	31.5	40	38	65	M18×1.5	94(102)	5	20	8	17
φ63	35	27	78	43	59	15	88	44.5	27	4.6	32	Rc3/8	Rc1/4	M14	12	31.5	45	38	75	M18×1.5	94(102)	9	20	8	17
φ80	40	32	98	53	72.5	23	108	54.5	27	4.6	37	Rc3/8	Rc1/4	M16	14	38	45	43	95	M22×1.5	114(124)	11.5	25	11	22
φ100	40	41	118	63	80.5	22.5	128.5	65.5	35	4.6	37	Rc1/2	Rc3/8	M18	15	38	55	51	114	M26×1.5	114(124)	17	30	13	27

Code	Mounting dimensions												With switch								
Bore size (mm)	N	Q	R	T	V	WF	*1 X	TC	TD	TE	TM	TN	*1 TY	*1 TZ	*1 AQ	O	P	T0,T5,T2,T3,T3P		T2W,T3W	
																		RD	HD	RD	HD
φ40	4	14	19	8	13	21	216(222)	57	16	22	63	95	140(143)	46(49)	42(45)+ Stroke length 2	66	41	5(8)	5(8)	7.5(10.5)	7.5(10.5)
φ50	4	15.5	23.5	11	14	23	245(253)	67	16	22	75	107	159(163)	51(55)	47(51)+ Stroke length 2	72	43	6.5(10.5)	5(9)	9(13)	7(11)
φ63	4	16.5	21.5	11	14	23	259(267)	82	20	28	90	130	173(177)	51(55)	47(51)+ Stroke length 2	83	48	6.5(10.5)	5(9)	9(13)	7(11)
φ80	4	19	28	13	20	32	321(331)	100	20	34	110	150	220(225)	61(66)	51(62)+ Stroke length 2	104	57	12.5(17.5)	6(11)	15(20)	8(13)
φ100	4	19	28	16	20	32	341(351)	121	25	40	132	182	240(245)	61(66)	51(62)+ Stroke length 2	121	63	12(17)	6.5(11.5)	14.5(19.5)	8.5(13.5)

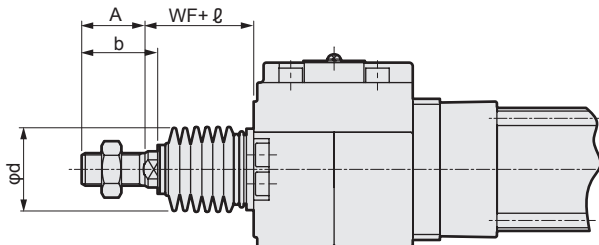
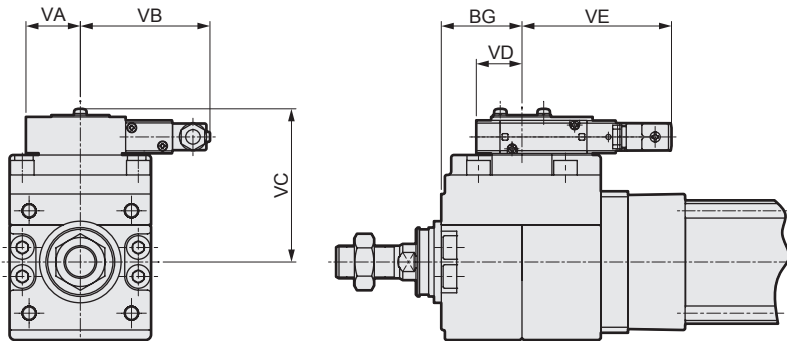
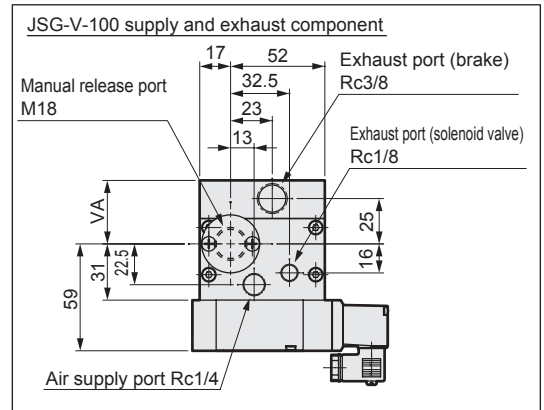
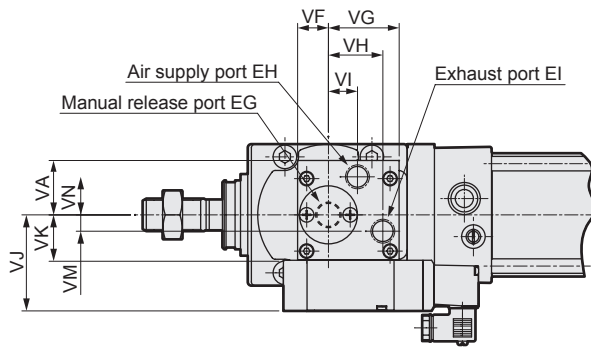
  

Code	With bellows				ℓ												
Bore size (mm)	A	b	d	WF	50 or less	Over 50 to 100	Over 100 to 150	Over 150 to 200	Over 200 to 300	Over 300 to 400	Over 400 to 500	Over 500 to 600	Over 600 to 700	Over 700 to 750	Over 750 to 800	Over 800	
φ40	30	35	40	21	30	43	55	68	93	118	143	0.35 x stroke-32					
φ50	35	42	47	23	31	44	56	69	94	119	144	169	0.35 x stroke-41				
φ63	35	42	47	23	31	44	56	69	94	119	144	169	0.35 x stroke-41				
φ80	40	50	53	32	29	42	54	67	92	117	142	167	192	204	217	0.35 x stroke-63	
φ100	40	52.5	61	32	29	42	54	67	92	117	142	167	192	204	217	0.35 x stroke-63	

## Dimensions



- JSG-V (with valve for brake release)



\*1: The shape of the JSG-V-100 supply and exhaust port differs from that of other sizes. Refer to the dimensions of JSG-V-100 supply and exhaust components in the upper right figure.

Code	With valve for brake release (JSG-V) basic dimensions																
Bore size (mm)	BG	EG	EH	EI	VA	VB	VC	VD	VE	VF	VG	VH	VI	VJ	VK	VM	VN
φ40	32.5	M12	Rc1/8	Rc1/8	26	62.5	72	24	83.5	19	38	30	12.5	44	16	4	16
φ50	39	M12	Rc1/8	Rc1/8	26	62.5	79.5	24	83.5	19	38	30	12.5	44	16	4	16
φ63	44.5	M14	Rc1/4	Rc1/4	30	71.5	84.5	25	82.5	17	39	30	16	53	25	9	21
φ80	54.5	M16	Rc1/4	Rc1/4	30	71.5	98	25	82.5	17	39	30	16	53	25	9	21
φ100	65.5	M18	*1				35	77.5	113	21	86.5	*1					

Code	With bellows													
Bore size (mm)	A	b	d	WF	l									
					50 or less	Over 50 to 100	Over 100 to 150	Over 150 to 200	Over 200 to 300	Over 300 to 400	Over 400 to 500	Over 500 to 600	Over 600 to 700	Over 700 to 750
φ40	30	35	40	21	30	43	55	68	93	118	143	-	-	-
φ50	35	42	47	23	31	44	56	69	94	119	144	169	-	-
φ63	35	42	47	23	31	44	56	69	94	119	144	169	-	-
φ80	40	50	53	32	29	42	54	67	92	117	142	167	192	204
φ100	40	52.5	61	32	29	42	54	67	92	117	142	167	192	204

\* Dimensions other than those listed above are the same as those of double acting/single rod. Refer to pages 738 to 746.

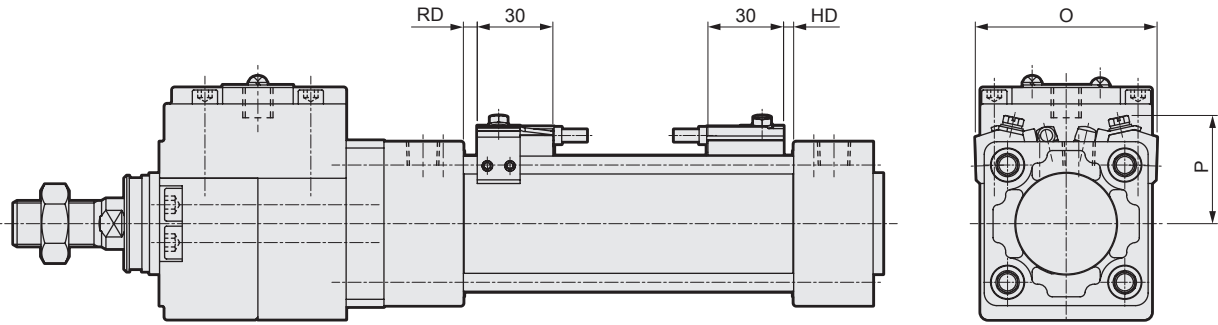
- LCW
- LCR
- LCG
- LCX
- LCM
- STM
- STG
- STS/STL
- STR2
- UCA2
- ULK\*
- JSK/M2
- JSG**
- JSC3/JSC4
- USSD
- UFCD
- USC
- JSB3
- LMB
- LML
- HCM
- HCA
- LBC
- CAC4
- UCAC2
- CAC-N
- UCAC-N
- RCC2
- RCS
- PCC
- SHC
- MCP
- GLC
- MFC
- BBS
- RRC
- GRC
- RV3\*
- NHS
- HR
- LN
- Hand
- Chuk
- MecHnd/Chuk
- ShkAbs
- FJ
- FK
- SpdContr
- Ending



## JSG Series common Dimensions with switch



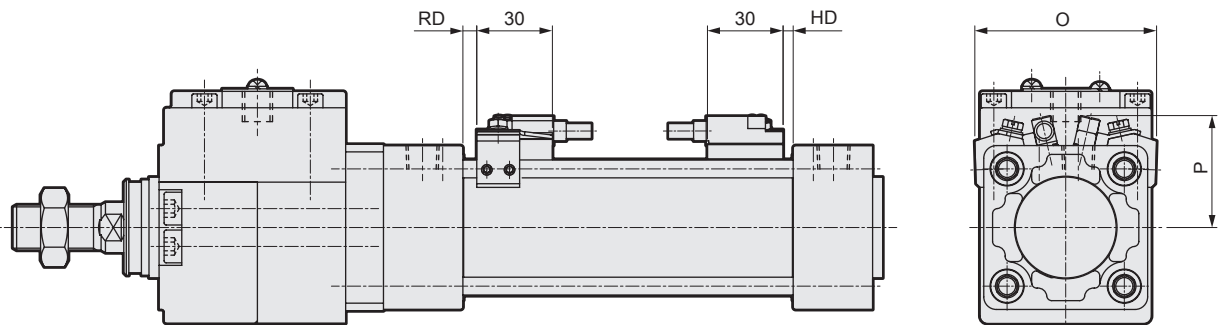
● With T2Y, T3Y, T2J, T8 switches



Code	With T2Y, T3Y, T2J, T8 switches						
	Bore size (mm)	O	P	T2Y, T3Y, T2J		T8	
				RD	HD	RD	HD
φ40	66	41	4(7)	4(7)	0(2)	0(2)	
φ50	72	43	5.5(9.5)	4(8)	0.5(4.5)	0(3)	
φ63	83	48	5.5(9.5)	4(8)	0.5(4.5)	0(3)	
φ80	104	57	11.5(16.5)	5(10)	6.5(11.5)	0(5)	
φ100	121	63	11(16)	5.5(10.5)	6(11)	0.5(5.5)	

\*1: Dimensions in ( ) are for the rubber cushion.

● With T1, T2YD, T2YDT switches



Code	With T1, T2YD, T2YDT switches			
	Bore size (mm)	O	P	RD
φ40	66	41	4(7)	4(7)
φ50	72	44	5.5(9.5)	4(8)
φ63	83	50	5.5(9.5)	4(8)
φ80	104	57	11.5(16.5)	5(10)
φ100	121	64	11(16)	5.5(10.5)

\*1: Dimensions in ( ) are for the rubber cushion.

- LCW
- LCR
- LCG
- LCX
- LCM
- STM
- STG
- STS/STL
- STR2
- UCA2
- ULK\*
- JSK/M2
- JSG**
- JSC3/JSC4
- USSD
- UFCD
- USC
- JSB3
- LMB
- LML
- HCM
- HCA
- LBC
- CAC4
- UCAC2
- CAC-N
- UCAC-N
- RCC2
- RCS
- PCC
- SHC
- MCP
- GLC
- MFC
- BBS
- RRC
- GRC
- RV3\*
- NHS
- HR
- LN
- Hand
- Chuk
- MecHnd/Chuk
- ShkAbs
- FJ
- FK
- SpdContr
- Ending

### JSG Series common accessory dimensions (rod eye, clevis, bracket)

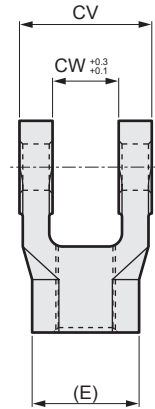
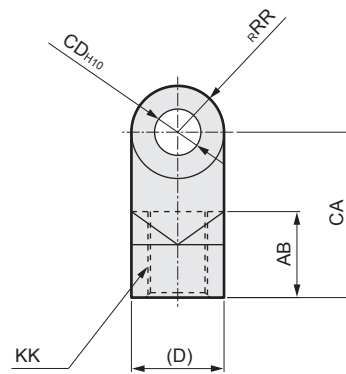
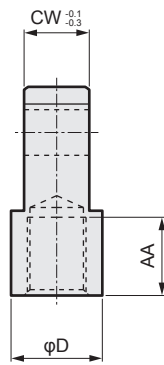
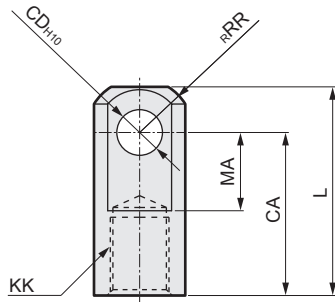


#### ● Rod eye (I)

Material: Steel  
Painting

#### ● Rod clevis (Y)

Material: Cast iron  
Painting



Model No.	Bore size (mm)	AA	CA	CD	CW	D	KK	L	MA	RR	Wt (kg)
SCG-I-40	40	19	40	10	14	22	M14×1.5	50	19	12.5	0.07
SCG-I-50	50,63	24	50	14	20	28	M18×1.5	64	24	16.5	0.20
SCG-I-80	80	26	60	22	30	40	M22×1.5	80	34	23.5	0.52
SCG-I-100	100	26	60	22	30	40	M26×1.5	80	34	23.5	0.48

Model No.	Bore size (mm)	AB	CA	CD	CV	CW	D	E	KK	RR	Wt (kg)
SCG-Y-40	40	21	40	10	28	14	22	25.4	M14×1.5	11	0.13
SCG-Y-50	50,63	26	50	14	40	20	28	32.3	M18×1.5	14	0.30
SCG-Y-80	80	31	65	22	60	30	40	46.2	M22×1.5	20	0.94
SCG-Y-100	100	31	65	22	60	30	40	46.2	M26×1.5	20	0.92

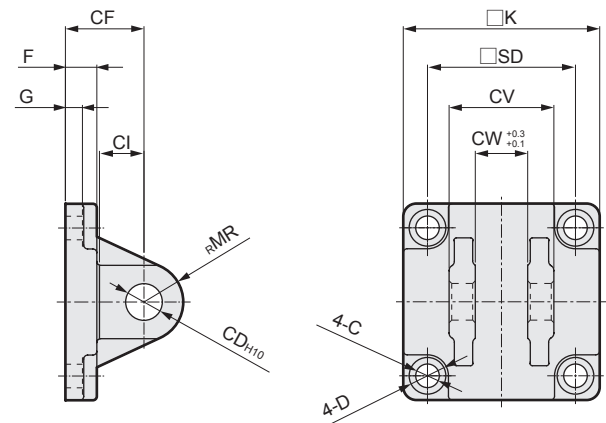
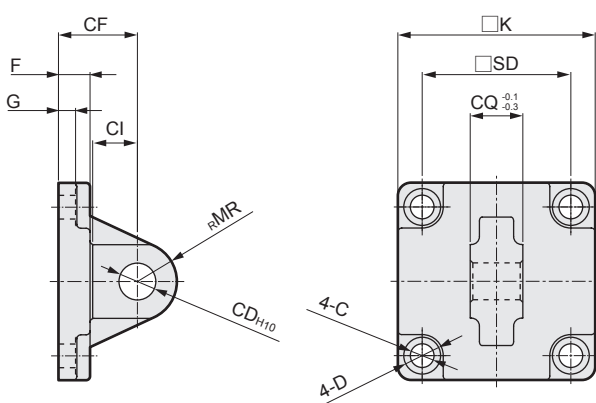
Note: A pin, a split pin and a plain washer are attached.

#### ● Eye bracket (B1)

Material: Cast iron  
Painting

#### ● Clevis bracket (B2)

Material: Cast iron  
Painting



Model No.	Bore size (mm)	C	CD	CF	CI	CQ	D	F	G	K	MR	SD	Wt (kg)
SCG-B1-40	40	6.6	10	23	13	14	11	9	4.5	52	11	38	0.16
SCG-B1-50	50	9	14	30	17	20	14	12	6.5	65	15	46.5	0.38
SCG-B1-63	63	9	14	30	17	20	14	12	6.5	75	15	56.5	0.48
SCG-B1-80	80	11	22	42	26	30	17	15	8.5	95	23	72	1.19
SCG-B1-100	100	11	22	42	26	30	17	15	8.5	114	23	89	1.56

Model No.	Bore size (mm)	C	CD	CF	CI	CV	CW	D	F	G	K	MR	SD	Wt (kg)
SCG-B2-40	40	6.6	10	23	13	28	14	11	9	4.5	52	11	38	0.20
SCG-B2-50	50	9	14	30	17	40	20	14	12	6.5	65	15	46.5	0.46
SCG-B2-63	63	9	14	30	17	40	20	14	12	6.5	75	15	56.5	0.58
SCG-B2-80	80	11	22	42	26	60	30	17	15	8.5	95	23	72	1.52
SCG-B2-100	100	11	22	42	26	60	30	17	15	8.5	114	23	89	1.91

Note: A pin, a split pin and a plain washer are attached.

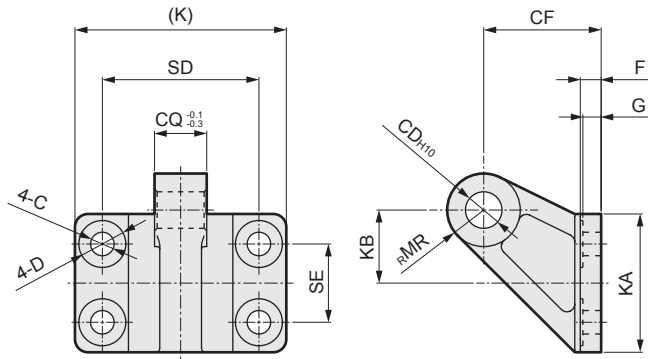
LCW
LCR
LCG
LCX
LCM
STM
STG
STS/STL
STR2
UCA2
ULK*
JSK/M2
<b>JSG</b>
JSC3/JSC4
USSD
UFCD
USC
JSB3
LMB
LML
HCM
HCA
LBC
CAC4
UCAC2
CAC-N
UCAC-N
RCC2
RCS
PCC
SHC
MCP
GLC
MFC
BBS
RRC
GRC
RV3*
NHS
HR
LN
Hand
Chuk
MecHnd/Chuk
ShkAbs
FJ
FK
SpdContr
Ending

## Accessory dimensions



### ● Eye bracket (B3)

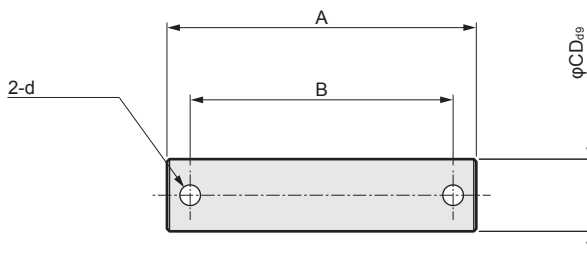
Material: Cast iron  
Painting



Model No.	Bore size (mm)	C	CD	CF	CQ	D	F	G	K	KA	KB	MR	SD	SE	Wt (kg)
SCG-B3-32	40	6.6	10	33	14	15	7	6	62	42	21	10	44	22	0.21
SCG-B3-50	50,63	9	14	45	20	18	8	7	81	53	28	14	60	30	0.45
SCG-B3-80	80,100	11	22	65	30	22	10	9	111	73	41.5	22	86	45	1.23

### ● Pin (P)

Material: Steel  
Zinc chromate treatment

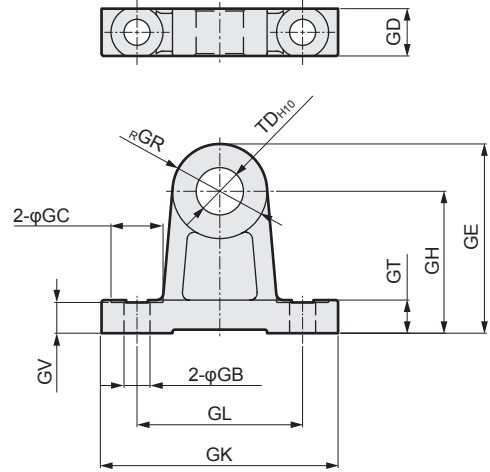


Model No.	Applicable bore size (mm)	A	B	CD	d	Weight (kg)
SCG-P-32	40	44	36	10	3	0.04
SCG-P-50	50,63	60	51	14	4	0.10
SCG-P-80	80,100	82	72	22	4	0.34

Note: Split pin and plain washer are attached.

### ● Trunnion No. 2 bracket (B4)

Material: Cast iron  
Painting



Model No.	Bore size (mm)	GB	GC	GD	GE	GR	GH	GK	GL	GT	GV	TD	Wt (kg)
SCG-B4-40	40,50	9	18	17	60	30	45	80	60	12	11	16	0.43
SCG-B4-63	63,80	11	22	20	80	40	60	100	70	14	13	20	0.87
SCG-B4-100	100	13.5	24	26	100	50	75	120	90	17	16	25	1.75

Note: The bracket is provided as 2 pcs./set.