

# Linear guide lock

## LML Series



### Specifications

Descriptions		LML-15	LML-20	LML-25	LML-30	LML-35	
Rail width	mm	15	20	25	30	35 *1	
Manufacturers of compatible guides		THK/IKO					
Working fluid		Compressed air					
Max. working pressure		1.0 (≈150 psi, 10 bar)					
Min. working pressure		0.35 (≈51 psi, 3.5 bar)					
Proof pressure		1.5 (≈220 psi, 15 bar)					
Ambient temperature		-5 (23°F) to 60 (140°F) (no freezing)					
Lubrication		Not available					
Port size		M5 (Rc1/8: Option selection)					
Holding force		N (*2)	300	450	600	850	1150
Default backlash		±0.05					
Weight	Body	600	900	1200	1900	2800	
	Scraper additional weight	50	70	100	180	220	
	Manual release additional weight	160	230	340	550	820	

\*1 For compatible rail, refer to "How to order".

\*2 The holding force is the force that can retain the static load without vibration or impact when the lock is ON in absence of load.

The holding force above is the value when Alvania grease No. 2 (Showa Shell Sekiyu K.K.) is applied. Note that the holding force may vary in some environments.

LCW
LCR
LCG
LCX
LCM
STM
STG
STS/STL
STR2
UCA2
ULK*
JSK/M2
JSG
JSC3/JSC4
USSD
UFCD
USC
JSB3
LMB
<b>LML</b>
HCM
HCA
LBC
CAC4
UCAC2
CAC-N
UCAC-N
RCC2
RCS
PCC
SHC
MCP
GLC
MFC
BBS
RRC
GRC
RV3*
NHS
HR
LN
Hand
Chuk
MecHnd/Chuk
ShkAbs
FJ
FK
SpdContr
Ending

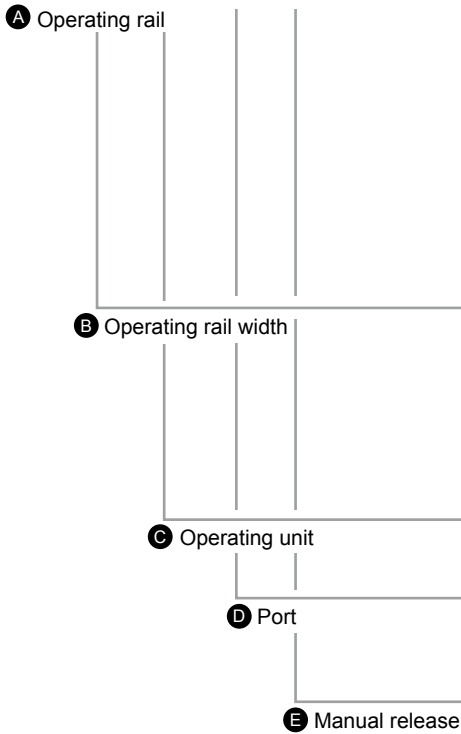
## How to order

Compatible guide: THK

● Without scraper



● With scraper



Code	Content
<b>A Operating rail</b>	
SR	Refer to the table below for combinations of operating rail, operating rail width, and operating unit.
SSR	
HSR	
SHS	
NR	
NRS	
SNR	
SNS	
<b>B Operating rail width</b>	
15	Refer to the table below for combinations of operating rail, operating rail width, and operating unit.
20	
25	
30	
35	
<b>C Operating unit</b>	
Refer to the table below for codes.	
<b>D Port</b>	
Blank	Lock release port M5
B	Lock release port Rc1/8
<b>E Manual release</b>	
Blank	None
H	With <span style="float: right;">Note</span>

Note: Be sure to mount LML on rail before operating manual release.

## Table

B Operating rail width	A Operating rail																										
	SR				SSR		HSR				SHS																
15	●	-	-	-	●	●	●	-	-	-	-	●	●	-	-												
20	●	-	-	-	●	●	●	●	-	-	-	●	●	-	-												
25	-	●	-	-	●	●	●	●	●	-	-	●	●	●	●												
30	●	-	-	-	●	-	●	●	●	●	-	●	●	●	●												
35	●	-	-	-	●	-	●	●	●	●	-	●	●	●	●												
C Operating unit	W	V	TB	SB	WY	VY	TBY	SBY	XW	XV	XTB	A	B	R	LA	LB	LR	CA	HA	CB	HB	C	LC	V	LV	R	LR

B Operating rail width	A Operating rail																			
	NR				NRS				SNR		SNS									
15	-	-	-	-	-	-	-	-	-	-	-	-	-							
20	-	-	-	-	-	-	-	-	-	-	-	-	-							
25	-	-	-	-	-	-	-	-	-	-	-	-	-							
30	●	-	-	-	●	-	-	●	●	●	-	●	●							
35	●	-	-	-	●	-	-	●	●	●	-	●	●							
C Operating unit	A	LA	B	LB	R	LR	A	LA	B	LB	R	LR	C	LC	R	LR	C	LC	R	LR

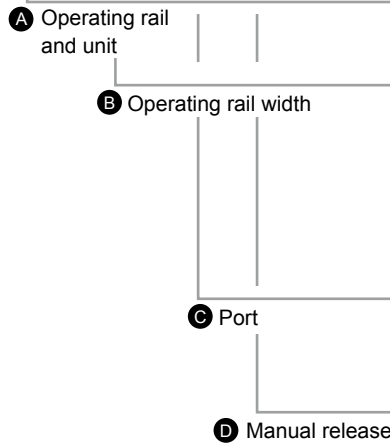
### How to order

Compatible guide: IKO

● Without scraper



● With scraper



Code	Content
<b>A Operating rail and unit</b>	
Refer to the table below for codes.	
<b>B Operating rail width</b>	
15	Refer to the table below for combinations of operating rail and operating rail width.
20	
25	
30	
35	
<b>C Port</b>	
Blank	Lock release port M5
B	Lock release port Rc1/8
<b>D Manual release</b>	
Blank	None
H	With

Note: Be sure to mount LML on rail before operating manual release.

### Table

B Operating rail width	A Operating rail and unit																		
	ME	MEC	MET	METC	LWE	LWEC	LWET	LWETC	MES	MESC	LWES	LWESC	MEG	METG	LWEG	LWETG	MESG	LWESG	
15			●					●		●		●						●	
20			●					●		●		●						●	
25			●					●		●		●						●	
30			●					●		●		●						●	
35			●					●		●		●						-	

B Operating rail width	A Operating rail and unit															
	LWH	LWHT	LWHD	LWHS	MH	MHT	MHD	MHS	LWHTG	MHG	MHTG	LWHS	MHSG	LWHG	MHDG	LWHDG
15	●	●	●		●	●	●			-			-	-	-	-
20	●		●		●		●		●			●	●	●		-
25	●	●	●		●	●	●		●			●	●	●	●	●
30	●	●	●		●	●	●		●			●	●	●	●	●
35	●	●			●	●			●				-	●	●	●

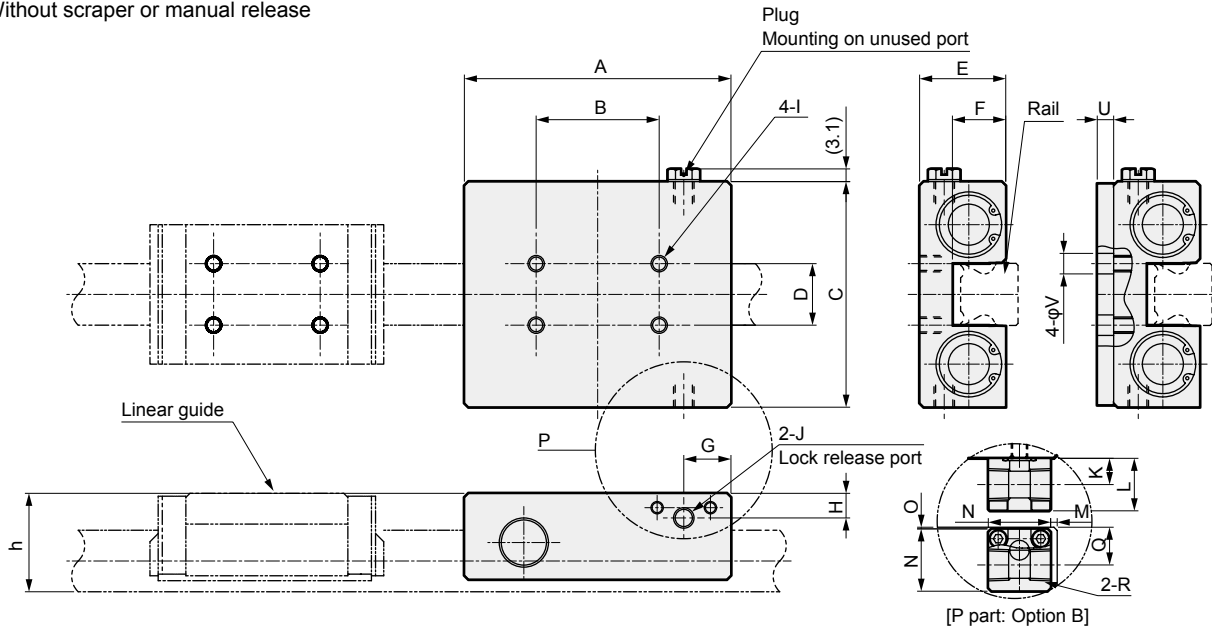
### Safety precautions

- The product cannot function as brake (to stop a moving workpiece).  
When using it for position locking (holding the cylinder stationary), the dynamic force should not exceed 50% of the holding force.
- For the manual release option -H, use the special release bolt attached with the product to prevent failure.

LCW
LCR
LCG
LCX
LCM
STM
STG
STS/STL
STR2
UCA2
ULK*
JSK/M2
JSG
JSC3/JSC4
USSD
UFCD
USC
JSB3
LMB
<b>LML</b>
HCM
HCA
LBC
CAC4
UCAC2
CAC-N
UCAC-N
RCC2
RCS
PCC
SHC
MCP
GLC
MFC
BBS
RRC
GRC
RV3*
NHS
HR
LN
Hand
Chuk
MecHnd/Chuk
ShkAbs
FJ
FK
SpdContr
Ending

## Dimensions

### ● Without scraper or manual release

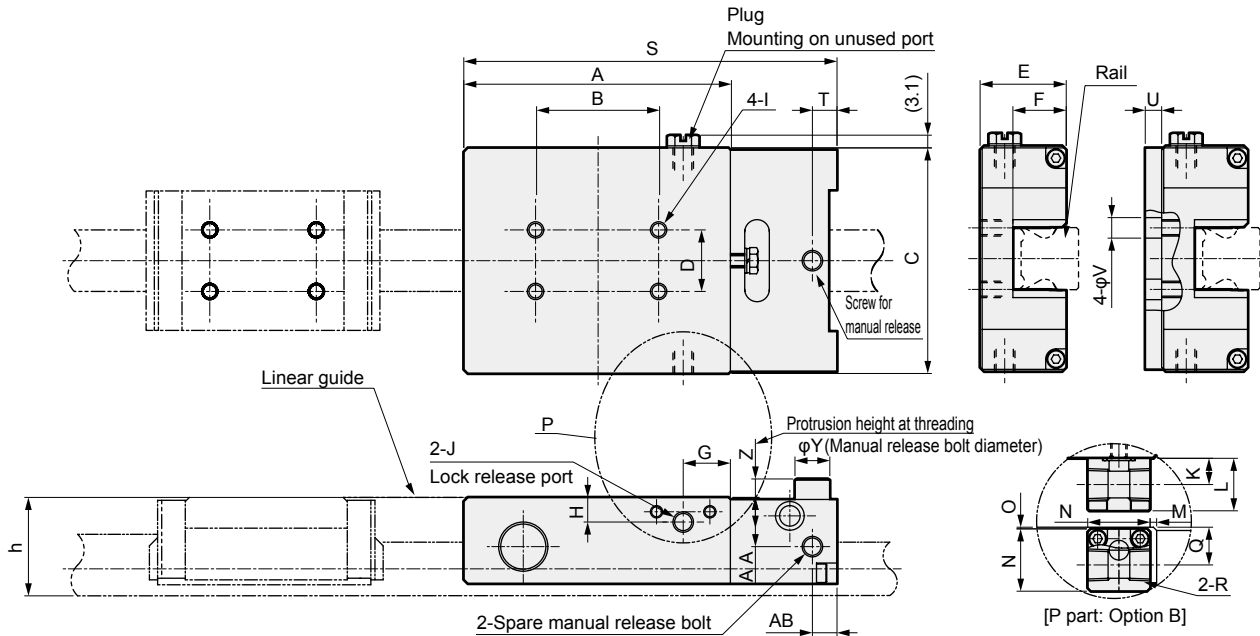


Model No.	A	B	C	D	E	F	G	H	I	J	K	L	M	N	O	Q	R	U	V
LML*-15	65	30	55	15	21	13	11.5	6	M4 depth 5	M5	8	16	2	19	0.5	11.5	Rc1/8	4	5
LML*-20	70	30	66	20	24.5	13.5	12	6	M5 depth 6	M5	8	16	2.5	19	0.5	11.5	Rc1/8	-	-
LML*-25	75	30	75	20	29	16	10	6	M6 depth 7	M5	8	16	0.5	19	0.5	11.5	Rc1/8	4	7
LML*-30	82	30	88	25	35.5	20.5	12	6.5	M6 depth 9	M5	8	16	2.5	19	1	12	Rc1/8	3	7
LML*-35	90	40	102	30	40	22	12	7	M8 depth 9	M5	8	16	2.5	19	1.5	12.5	Rc1/8	7	9

\*1: h dimensions differ depending on the guide used. Refer to the corresponding catalog.

\*2: Dimensions for U and V are only for HSR/SHS-R/LR (manufactured by THK Co., Ltd.) or MHD(G)/LWHD(G) (manufactured by Nippon Thompson Co., Ltd.).

### ● Without scraper, with manual release



Model No.	A	B	C	D	E	F	G	H	I	J	K	L	M	N	O	Q	R	S	T	U	V	Y	Z	AA	AB
LML*-15*-H	65	30	55	15	21	13	11.5	6	M4 depth 5	M5	8	16	2	19	0.5	11.5	Rc1/8	91	6	4	5	8.5	4.5	12	6
LML*-20*-H	70	30	66	20	24.5	13.5	12	6	M5 depth 6	M5	8	16	2.5	19	0.5	11.5	Rc1/8	98	6.5	-	-	8.5	4.5	15.5	6
LML*-25*-H	75	30	75	20	29	16	10	6	M6 depth 7	M5	8	16	0.5	19	0.5	11.5	Rc1/8	105	6.5	4	7	10	5.5	19	7
LML*-30*-H	82	30	88	25	35.5	20.5	12	6.5	M6 depth 9	M5	8	16	2.5	19	1	12	Rc1/8	117	8.5	3	7	10	5.5	25.5	9
LML*-35*-H	90	40	102	30	40	22	12	7	M8 depth 9	M5	8	16	2.5	19	1.5	12.5	Rc1/8	130	9.5	7	9	13	7.5	30	10

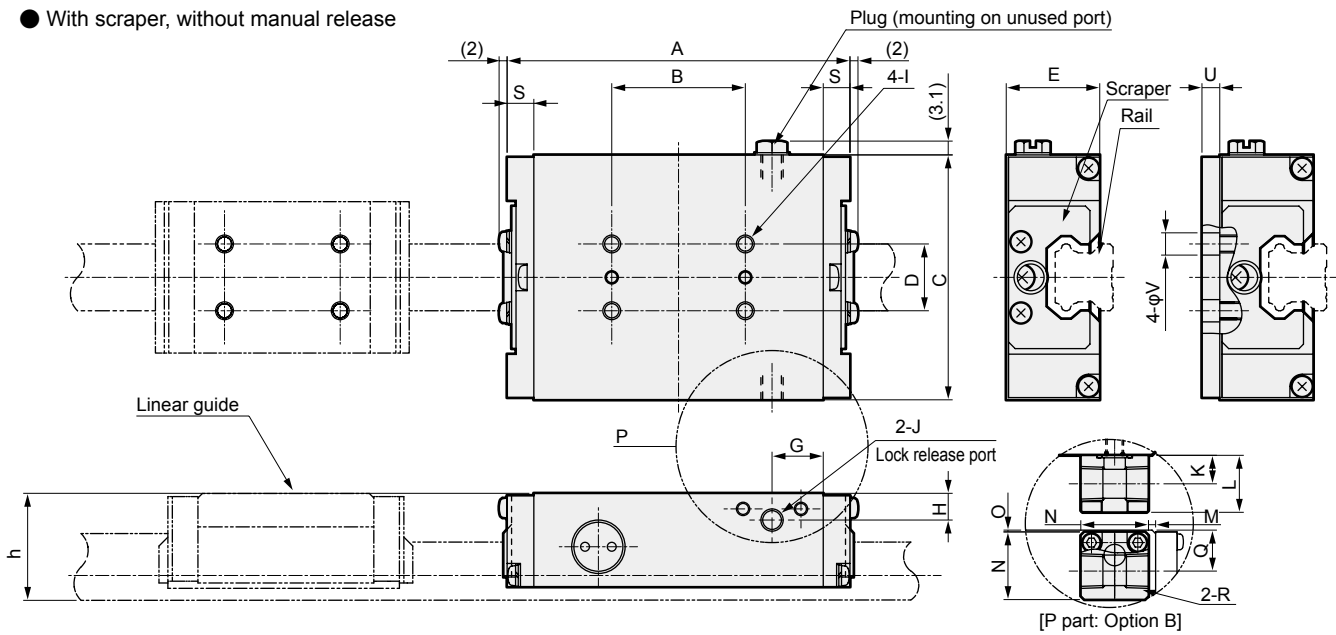
\*1: h dimensions differ depending on the guide used. Refer to the corresponding catalog.

\*2: Dimensions for U and V are only for HSR/SHS-R/LR (manufactured by THK Co., Ltd.) or MHD(G)/LWHD(G) (manufactured by Nippon Thompson Co., Ltd.).

- LCW
- LCR
- LCG
- LCX
- LCM
- STM
- STG
- STS/STL
- STR2
- UCA2
- ULK\*
- JSK/M2
- JSG
- JSC3/JSC4
- USSD
- UFCD
- USC
- JSB3
- LMB
- LML**
- HCM
- HCA
- LBC
- CAC4
- UCAC2
- CAC-N
- UCAC-N
- RCC2
- RCS
- PCC
- SHC
- MCP
- GLC
- MFC
- BBS
- RRC
- GRC
- RV3\*
- NHS
- HR
- LN
- Hand
- Chuk
- MecHnd/Chuk
- ShkAbs
- FJ
- FK
- SpdContr
- Ending

### Dimensions

● With scraper, without manual release

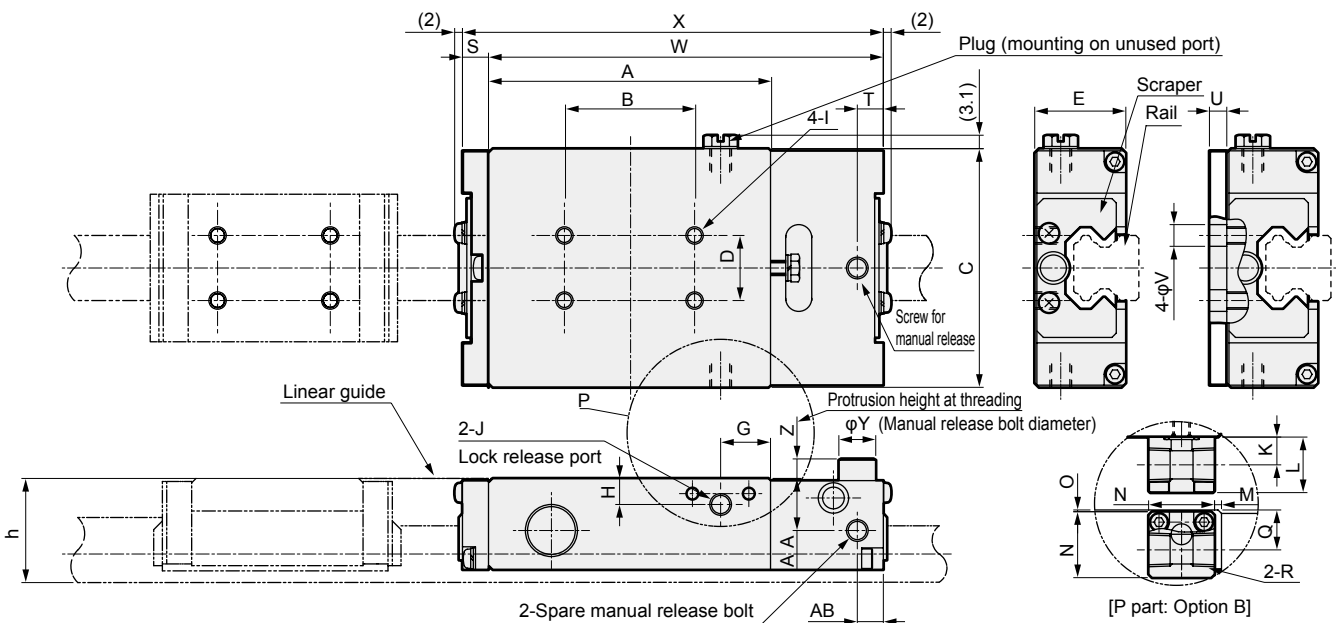


Model No.	A	B	C	D	E	G	H	I	J	K	L	M	N	O	Q	R	S	U	V
LML-G-*-15	77	30	55	15	21	11.5	6	M4 depth 5	M5	8	16	2	19	0.5	11.5	Rc1/8	6	4	5
LML-G-*-20	82	30	66	20	24.5	12	6	M5 depth 6	M5	8	16	2.5	19	0.5	11.5	Rc1/8	6	-	-
LML-G-*-25	87	30	75	20	29	10	6	M6 depth 7	M5	8	16	0.5	19	0.5	11.5	Rc1/8	6	4	7
LML-G-*-30	100	30	88	25	35.5	12	6.5	M6 depth 9	M5	8	16	2.5	19	1	12	Rc1/8	9	3	7
LML-G-*-35	108	40	102	30	40	12	7	M8 depth 9	M5	8	16	2.5	19	1.5	12.5	Rc1/8	9	7	9

\*1: h dimensions differ depending on the guide used. Refer to the corresponding catalog.

\*2: Dimensions for U and V are only for HSR/SHS-R/LR (manufactured by THK Co., Ltd.) or MHD(G)/LWHD(G) (manufactured by Nippon Thompson Co., Ltd.).

● With scraper and manual release



Model No.	A	B	C	D	E	G	H	I	J	K	L	M	N	O	Q	R	S	T	U	V	W	X	Y	Z	AA	AB
LML-G-*-15*-H	65	30	55	15	21	11.5	6	M4 depth 5	M5	8	16	2	19	0.5	11.5	Rc1/8	6	6	4	5	91	97	8.5	4.5	12	6
LML-G-*-20*-H	70	30	66	20	24.5	12	6	M5 depth 6	M5	8	16	2.5	19	0.5	11.5	Rc1/8	6	6.5	-	-	98	104	8.5	4.5	15.5	6
LML-G-*-25*-H	75	30	75	20	29	10	6	M6 depth 7	M5	8	16	0.5	19	0.5	11.5	Rc1/8	6	6.5	4	7	105	111	10	5.5	19	7
LML-G-*-30*-H	82	30	88	25	35.5	12	6.5	M6 depth 9	M5	8	16	2.5	19	1	12	Rc1/8	9	8.5	3	7	117	126	10	5.5	25.5	9
LML-G-*-35*-H	90	40	102	30	40	12	7	M8 depth 9	M5	8	16	2.5	19	1.5	12.5	Rc1/8	9	9.5	7	9	130	139	13	7.5	30	10

\*1: h dimensions differ depending on the guide used. Refer to the corresponding catalog.

\*2: Dimensions for U and V are only for HSR/SHS-R/LR (manufactured by THK Co., Ltd.) or MHD(G)/LWHD(G) (manufactured by Nippon Thompson Co., Ltd.).

- LCW
- LCR
- LCG
- LCX
- LCM
- STM
- STG
- STS/STL
- STR2
- UCA2
- ULK\*
- JSK/M2
- JSG
- JSC3/JSC4
- USSD
- UFCD
- USC
- JSB3
- LMB
- LML**
- HCM
- HCA
- LBC
- CAC4
- UCAC2
- CAC-N
- UCAC-N
- RCC2
- RCS
- PCC
- SHC
- MCP
- GLC
- MFC
- BBS
- RRC
- GRC
- RV3\*
- NHS
- HR
- LN
- Hand
- Chuk
- MecHnd/Chuk
- ShkAbs
- FJ
- FK
- SpdContr
- Ending