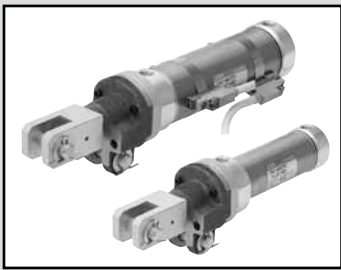


LCW
LCR
LCG
LCX
LCM
STM
STG
STS/STL
STR2
UCA2
ULK*
JSK/M2
JSG
JSC3/JSC4
USSD
UFCD
USC
JSB3
LMB
LML
HCM
HCA
LBC
CAC4
UCAC2
CAC-N
UCAC-N
RCC2
RCS
PCC
SHC
MCP
GLC
MFC
BBS
RRC
GRC
RV3*
NHS
HR
LN
Hand
Chuk
MecHnd/Chuk
ShkAbs
FJ
FK
SpdContr
Ending

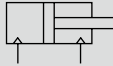


Lightweight clamp cylinder/double acting/single rod

CAC-N32/N40 Series

● Bore size: $\phi 32$, $\phi 40$

JIS symbol



Specifications

Descriptions		CAC-N32	CAC-N40
Bore size	mm	$\phi 32$	$\phi 40$
Actuation		Double acting	
Max. working pressure	MPa	1.0 (≈ 150 psi, 10 bar)	0.7 (≈ 100 psi, 7 bar)
Min. working pressure	MPa	0.15 (≈ 22 psi, 1.5 bar)	
Proof pressure	MPa	1.6 (≈ 230 psi, 16 bar)	1.05 (≈ 150 psi, 10.5 bar)
Ambient temperature	$^{\circ}\text{C}$	-10 (14°F) to 60 (140°F) (no freezing)	
Port size		Rc1/8	
Working piston speed	mm/s	50 to 500	50 to 400
Cushion		Rubber cushion	
Lubrication		Not required (use turbine oil ISO VS32 if necessary for lubrication)	
Mounting		Clevis bracket	
Allowable absorbed energy J	PUSH	0.424	
	PULL	0.424	0.639

Stroke length

Bore size (mm)	Standard stroke length (mm)	Max. stroke length (mm)	Min. stroke length (mm)	Min. stroke with switch (mm)
$\phi 32$	50, 75, 100, 125, 150	150	5	10
$\phi 40$				

Cylinder weight

(Unit: kg)

Bore size (mm)	Product weight per 0 mm stroke length	Additional weight per 100 mm stroke length	Weight per switch	Switch rail + band weight (per switch)
$\phi 32$	0.45	0.15	Refer to the weight in the switch specifications on the next page.	0.009
$\phi 40$	0.53	0.17		

(Example) Product weight of CAC-N40-50-TOH-R

- Product weight for stroke length 0 mm 0.53 kg
- Additional weight for stroke length 50 mm $0.17 \times \frac{50}{100} = 0.085$ kg
- Weight of 1 TOH switches 0.018 kg
- Weight of switch rail + 1 band 0.009 kg
- Product weight $0.53 + 0.085 + 0.018 + 0.009 = 0.642$ kg

Switch specifications

- 1-color/2-color display

Descriptions	Proximity 2-wire			Proximity 3-wire			Reed 2-wire						
	T1H/T1V	T2H/T2V/ T2JH/ T2JV	T2YH/ T2YV	T3H/ T3V	T3PH/ T3PV (Custom)	T3YH/ T3YV	TOH/TOV		T5H/T5V		T8H/T8V		
Applications	For programmable controller, relay, compact solenoid valve		Dedicated for programmable controller	For programmable controller, relay			For programmable controller, relay		For programmable controller, relay, IC circuit (without indicator lamp), serial connection		For programmable controller, relay		
Output method	-			NPN output	PNP output	NPN output	-						
Power supply voltage	-			10 to 28 VDC			-						
Load voltage	85 to 265 VAC	10 to 30 VDC		30 VDC or less			12/24 VDC	110 VAC	5/12/24 VDC	110 VAC	12/24 VDC	110 VAC	220 VAC
Load current	5 to 100 mA	5 to 20 mA (*1)		100 mA or less		50 mA or less	5 to 50 mA	7 to 20 mA	50 mA or less	20 mA or less	5 to 50 mA	7 to 20 mA	7 to 10 mA
Indicator lamp	LED (Lit when ON)	LED (Lit when ON)	Red/green LED (Lit when ON)	LED (Lit when ON)	Yellow LED (Lit when ON)	Red/green LED (Lit when ON)	LED (Lit when ON)		Without indicator lamp		LED (Lit when ON)		
Leakage current	1 mA or less with 100 VAC 2 mA or less with 200 VAC		1 mA or less		10 µA or less			0 mA					
Weight	g												
	1 m:33 3 m:87 5 m:142	1 m:18 3 m:49 5 m:80	1 m:33 3 m:87 5 m:142	1 m:18 3 m:49 5 m:80	1 m:33 3 m:87 5 m:142				1 m:18 3 m:49 5 m:80			1 m:33 3 m:87 5 m:142	

*1 : The above max. load current is 20 mA at 25°C. The current is lower than 20 mA if the operating ambient temperature around the switch is higher than 25°C. (5 to 10 mA at 60°C)

*2 : Refer to Intro Page 1 for other switch specifications.

*3 : The T0/T5 switch can also be used with 220 VAC. Contact CKD about working conditions.

*4 : Dimensions depend on switch model No. Refer to Ending Page 18 for details.

- AC magnetic field

Descriptions	Proximity 2-wire		
	T2YD		
Applications	Dedicated for programmable controller		
Indicator lamp	Red/green LED (Lit when ON)		
Load voltage	24 VDC ±10%		
Load current	5 to 20 mA		
Internal voltage drop	6 V or less		
Leakage current	1.0 mA or less		
Output delay time (*1) (Delay ON, delay OFF)	30 to 60 mS		
Lead wire (*2, 3)	Oil resistant vinyl cabtyre cable φ6, 0.5 mm ² x 2-conductor (standard 1 m)		
Insulation resistance	100 MΩ and over with 500 VDC megger		
Withstand voltage	No failure after 1 minute of 1,000 VAC application.		
Shock resistance	980 m/s ²		
Ambient temperature	-10 to +60°C		
Degree of protection	JIS C0920 (water-tight), IEC Standard IP67, oil resistance		
Weight	g	1 m:61	3 m:166 5 m:272

*1 : Indicates the time from magnetic sensor detection of the piston magnet until switch output.

*2 : 3 m and 5 m lead wires are available as options.

*3 : Flame-resistant lead wires are available as options.

*4 : Switch for AC magnetic field (T2YD) cannot be used in DC magnetic field.

Theoretical thrust table

(Unit: N)

Bore size (mm)	Operating direction	Working pressure MPa									
		0.15	0.2	0.3	0.4	0.5	0.6	0.7	0.8	0.9	1.0
φ32	Push	1.21 × 10 ²	1.61 × 10 ²	2.41 × 10 ²	3.22 × 10 ²	4.02 × 10 ²	4.83 × 10 ²	5.63 × 10 ²	6.43 × 10 ²	7.24 × 10 ²	8.04 × 10 ²
	Pull	1.04 × 10 ²	1.38 × 10 ²	2.07 × 10 ²	2.76 × 10 ²	3.46 × 10 ²	4.15 × 10 ²	4.84 × 10 ²	5.53 × 10 ²	6.22 × 10 ²	6.91 × 10 ²
φ40	Push	1.88 × 10 ²	2.51 × 10 ²	3.77 × 10 ²	5.03 × 10 ²	6.28 × 10 ²	7.54 × 10 ²	8.80 × 10 ²	-	-	-
	Pull	1.65 × 10 ²	2.21 × 10 ²	3.31 × 10 ²	4.41 × 10 ²	5.51 × 10 ²	6.62 × 10 ²	7.72 × 10 ²	-	-	-

LCW
LCR
LCG
LCX
LCM
STM
STG
STS/STL
STR2
UCA2
ULK*
JSK/M2
JSG
JSC3/JSC4
USSD
UFCD
USC
JSB3
LMB
LML
HCM
HCA
LBC
CAC4
UCAC2
CAC-N
UCAC-N
RCC2
RCS
PCC
SHC
MCP
GLC
MFC
BBS
RRC
GRC
RV3*
NHS
HR
LN
Hand
Chuk
MecHnd/Chuk
ShkAbs
FJ
FK
SpdContr
Ending

CAC-N32/N40 Series

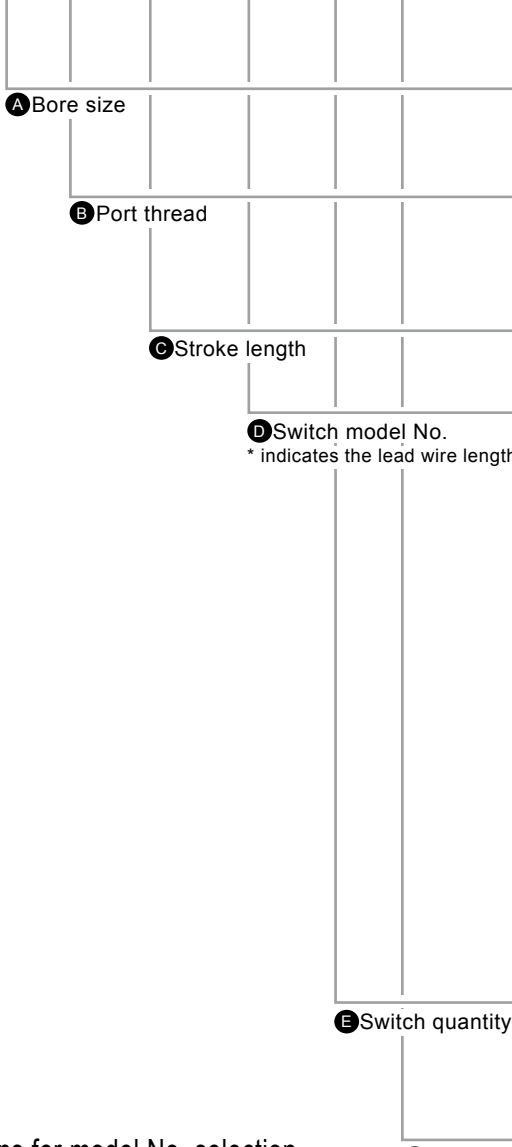
How to order

● Without switch (built-in magnet for switch)

CAC - N40 - 50 - Y

● With switch (built-in magnet for switch)

CAC - N40 - 50 - T0H - R - Y



Code	Content				
A Bore size (mm)					
N32	φ32				
N40	φ40				
B Port thread					
Blank	Rc thread				
N	NPT thread (custom order product)				
G	G thread (custom order product)				
C Stroke length (mm)					
50, 75, 100, 125, 150					
D Switch model No.					
Axial lead wire	Radial lead wire	Contact	Voltage	Display	Lead wire
			AC/DC		
T0H*	T0V*	Reed	● ●	1-color display	2-wire
T5H*	T5V*		● ●	Without indicator lamp	
T8H*	T8V*		● ●	1-color display	
T1H*	T1V*	Proximity	● ●	1-color display	2-wire
T2H*	T2V*		● ●		
T3H*	T3V*		● ●	1-color display (custom order)	3-wire
T3PH*	T3PV*		● ●		
T2YH*	T2YV*		● ●		
T3YH*	T3YV*		● ●		
T2YD*	-		● ●	2-color display	2-wire
T2YDT*	-	● ●	AC magnetic field		
T2JH*	T2JV*	● ●	1-color display off-delay	2-wire	
* Lead wire length (m)					
Blank	1 (standard)				
3	3 (option)				
5	5 (option)				
E Switch quantity					
R	1 on rod side				
H	1 on head side				
D	2				
F Accessory					
Blank	Without accessory (rod eye)				
Y	Rod clevis				

⚠ Precautions for model No. selection

*1 : A pin, split pin, and plain washer are attached with Y.

[Example of model No.]

CAC-N40-50-T0H-R-Y

Model name : Lightweight clamp cylinder

- A** Bore size : φ40 mm
- B** Port thread : Rc thread
- C** Stroke length : 50 mm
- D** Switch model No. : Reed switch T0H, lead wire length 1 m
- E** Switch quantity : 1 on rod side
- F** Accessory : Rod clevis

How to order switch

A) Switch body + mounting bracket set

CMK2 - T0H - 40

Switch model No.
(Item **D** on the previous page)

Bore size
(Item **A** on the previous page)

B) Switch body only

SW - T0H

Switch model No.
(Item **D** on the previous page)

C) Mounting bracket set

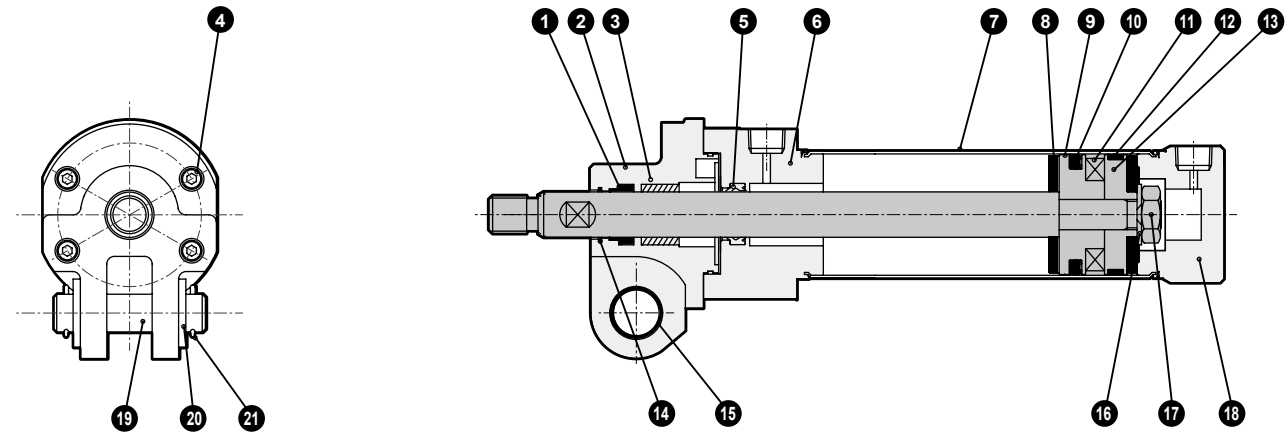
CMK2 - T - 32

Bore size
(Item **A** on the previous page)

LCW
LCR
LCG
LCX
LCM
STM
STG
STS/STL
STR2
UCA2
ULK*
JSK/M2
JSG
JSC3/JSC4
USSD
UFCD
USC
JSB3
LMB
LML
HCM
HCA
LBC
CAC4
UCAC2
CAC-N
UCAC-N
RCC2
RCS
PCC
SHC
MCP
GLC
MFC
BBS
RRC
GRC
RV3*
NHS
HR
LN
Hand
Chuk
MecHnd/Chuk
ShkAbs
FJ
FK
SpdContr
Ending

CAC-N32/N40 Series

Internal structure and parts list



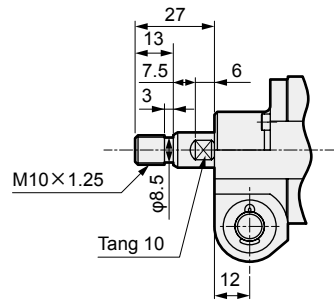
Cannot be disassembled

No.	Part name	Material	Remarks	No.	Part name	Material	Remarks
1	Scraper	Nitrile rubber		12	Wear ring	Polyacetal resin	
2	Front clevis	Aluminum alloy die-casting	Alumite	13	Piston B	Aluminum alloy	
3	Bush	Copper alloy		14	Metal scraper	Copper	
4	Hexagon socket head cap screw	Alloy steel		15	Bush for clevis	Dry bearing	
5	Rod packing	Nitrile rubber		16	Plain washer	Steel	Chromate
6	Rod cover	Aluminum alloy		17	Hexagon nut	Steel	Chromate
7	Tube	Stainless steel		18	Head cover	Aluminum alloy	
8	Cushion rubber	Urethane rubber		19	Pin	Steel	Chromate
9	Piston A	Aluminum alloy		20	Plain washer	Steel	Chromate
10	Piston packing	Nitrile rubber		21	Split pin	Steel	Chromate
11	Magnet	Plastic					

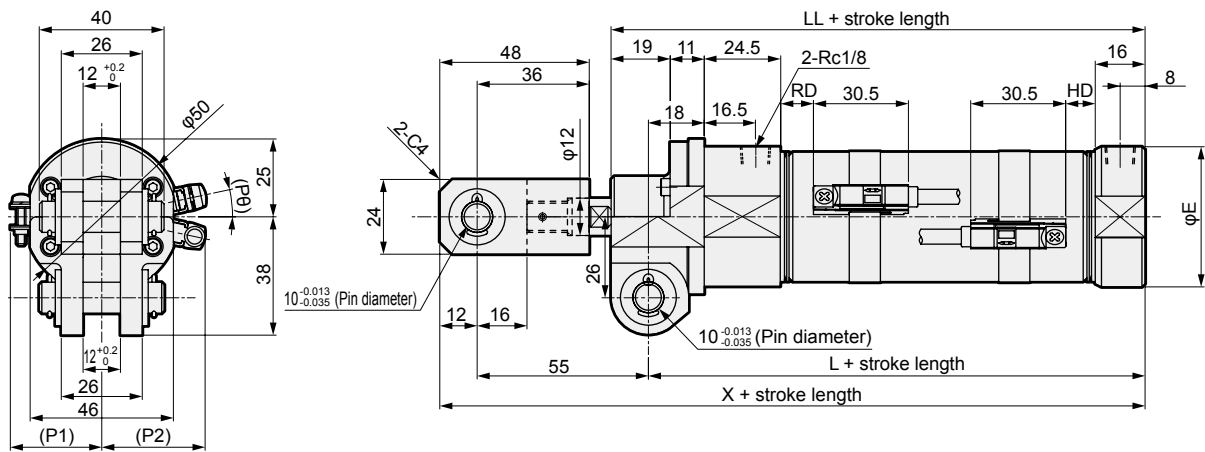
Note: The cylinder is a swaging and cannot be disassembled.

LCW
LCR
LCG
LCX
LCM
STM
STG
STS/STL
STR2
UCA2
ULK*
JSK/M2
JSG
JSC3/JSC4
USSD
UFCD
USC
JSB3
LMB
LML
HCM
HCA
LBC
CAC4
UCAC2
CAC-N
UCAC-N
RCC2
RCS
PCC
SHC
MCP
GLC
MFC
BBS
RRC
GRC
RV3*
NHS
HR
LN
Hand
Chuk
MecHnd/Chuk
ShkAbs
FJ
FK
SpdContr
Ending

Without rod eye



With rod clevis (Y)



Code Bore size	E	L	LL	X	P1	P2	Pθ	RD	HD
φ32	36	95.5	107.5	162.5	25	29	15°	8.5	7.5
φ40	45	99.5	111.5	166.5	29	33	12°	10.5	9.5

LCW
LCR
LCG
LCX
LCM
STM
STG
STS/STL
STR2
UCA2
ULK*
JSK/M2
JSG
JSC3/JSC4
USSD
UFCD
USC
JSB3
LMB
LML
HCM
HCA
LBC
CAC4
UCAC2
CAC-N
UCAC-N
RCC2
RCS
PCC
SHC
MCP
GLC
MFC
BBS
RRC
GRC
RV3*
NHS
HR
LN
Hand
Chuk
MecHnd/Chuk
ShkAbs
FJ
FK
SpdContr
Ending

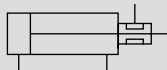


Lightweight position locking clamp cylinder

UCAC-N32/N40 Series

● Bore size: $\phi 32$, $\phi 40$

JIS symbol



Specifications

Descriptions		UCAC-N32	UCAC-N40
Bore size	mm	$\phi 32$	$\phi 40$
Actuation		Double acting	
Max. working pressure	MPa	1.0 (≈ 150 psi, 10 bar)	0.7 (≈ 100 psi, 7 bar)
Min. working pressure	MPa	0.25 (≈ 36 psi, 2.5 bar)	
Proof pressure	MPa	1.6 (≈ 230 psi, 16 bar)	1.05 (≈ 150 psi, 10.5 bar)
Ambient temperature	$^{\circ}\text{C}$	-10 (14 $^{\circ}\text{F}$) to 60 (140 $^{\circ}\text{F}$) (no freezing)	
Port size		Rc1/8	
Working piston speed	mm/s	50 to 500	50 to 400
Cushion		Rubber cushion	
Lubrication		Not required (use turbine oil ISO VS32 if necessary for lubrication)	
Mounting		Clevis bracket	
Position locking mechanism		Forward/backward locking	
Lock force	N	631	
Allowable absorbed energy J	PUSH	0.424	
	PULL	0.424	0.639

Stroke length

Bore size (mm)	Standard stroke length (mm)	Max. stroke length (mm)	Min. stroke length (mm)	Min. stroke with switch (mm)
$\phi 32$	50, 75, 100, 125, 150	150	5	10
$\phi 40$				

Switch specifications

● 1-color/2-color display/for AC magnetic field

Descriptions	Proximity 2-wire			Proximity 3-wire			Reed 2-wire				Proximity 2-wire			
	T1H/T1V	T2H/T2V	T2YH/T2YV	T3H/T3V	T3PH/T3PV (Custom)	T3YH/T3YV	T0H/T0V	T5H/T5V	T8H/T8V		T2YD			
Applications	For programmable controller, relay, compact solenoid valve	Dedicated for programmable controller		For programmable controller, relay			For programmable controller, relay	For programmable controller, relay, IC circuit (no indicator lamp), serial connection		For programmable controller, relay		Dedicated for programmable controller		
Output method	-			NPN output	PNP output	NPN output	-							
Pwr. supp. V.	-			10 to 28 VDC			-							
Load voltage	85 to 265 VAC	10 to 30 VDC		30 VDC or less			12/24 VDC	110 VAC	5/12/24 VDC	110 VAC	12/24 VDC	110 VAC	220 VAC	24 VDC $\pm 10\%$
Load current	5 to 100 mA	5 to 20 mA (*1)		100 mA or less		50 mA or less	5 to 50 mA	7 to 20 mA	50 mA or less	≤ 20 mA	5 to 50 mA	7 to 20 mA	7 to 10 mA	5 to 20 mA
Indicator lamp	LED (Lit when ON)	LED (Lit when ON)	Red/green LED (Lit when ON)	LED (Lit when ON)	Yellow LED (Lit when ON)	Red/green LED (Lit when ON)	LED (Lit when ON)	Without indicator lamp		LED (Lit when ON)		Red/green LED (Lit when ON)		
Leakage current	1 mA or less with 100 VAC 2 mA or less with 200 VAC	1 mA or less		10 μA or less			0 mA					1 mA or less		
Weight g	1 m:33 3 m:87 5 m:142	1 m:18 3 m:49 5 m:80	1 m:33 3 m:87 5 m:142	1 m:18 3 m:49 5 m:80	1 m:33 3 m:87 5 m:142	1 m:33 3 m:87 5 m:142	1 m:18 3 m:49 5 m:80		1 m:33 3 m:87 5 m:142		1 m:61 3 m:166 5 m:272			

*1 : The above max. load current is 20 mA at 25 $^{\circ}\text{C}$. The current is lower than 20 mA if the operating ambient temperature around the switch is higher than 25 $^{\circ}\text{C}$. (5 to 10 mA at 60 $^{\circ}\text{C}$)

*2 : Refer to Intro Page 1 for other switch specifications.

*3 : Switch for AC magnetic field (T2YD) cannot be used in DC magnetic field.

*4 : The T0/T5 switch can also be used with 220 VAC. Contact CKD about working conditions.

*5 : Dimensions depend on switch model No. Refer to Ending Page 18 for details.

UCAC-N32/N40 Series

Specifications

Cylinder weight

(Unit: kg)

Bore size (mm)		Product weight per 0 mm stroke length	Additional weight per 100 mm stroke length	Weight per switch	Switch rail + band weight (per switch)
φ32	Forward locking : F	0.71	0.15	Refer to the weight in the switch specifications on the previous page.	0.009
	Backward locking: B	0.65			
φ40	Forward locking : F	0.78	0.17		
	Backward locking: B	0.72			

(Example) Product weight of UCAC-N32-50-B-TOH-D

- Product weight for 0 mm stroke length (backward locking: B)..... 0.65 kg
- Additional weight per 50mm stroke length $0.15 \times \frac{50}{100} = 0.075$ kg
- Weight of 2 TOH switches $0.018 \times 2 = 0.036$ kg
- Weight of switch rail + 2 bands $0.009 \times 2 = 0.018$ kg
- Product weight $0.65 + 0.075 + 0.036 + 0.018 = 0.779$ kg

Theoretical thrust table

(Unit: N)

Bore size (mm)	Operating direction	Working pressure MPa									
		0.15	0.2	0.3	0.4	0.5	0.6	0.7	0.8	0.9	1.0
φ32	Push	1.21×10^2	1.61×10^2	2.41×10^2	3.22×10^2	4.02×10^2	4.83×10^2	5.63×10^2	6.43×10^2	7.24×10^2	8.04×10^2
	Pull	1.04×10^2	1.38×10^2	2.07×10^2	2.76×10^2	3.46×10^2	4.15×10^2	4.84×10^2	5.53×10^2	6.22×10^2	6.91×10^2
φ40	Push	1.88×10^2	2.51×10^2	3.77×10^2	5.03×10^2	6.28×10^2	7.54×10^2	8.80×10^2	-	-	-
	Pull	1.65×10^2	2.21×10^2	3.31×10^2	4.41×10^2	5.51×10^2	6.62×10^2	7.72×10^2	-	-	-

LCW
LCR
LCG
LCX
LCM
STM
STG
STS/STL
STR2
UCA2
ULK*
JSK/M2
JSG
JSC3/JSC4
USSD
UFCD
USC
JSB3
LMB
LML
HCM
HCA
LBC
CAC4
UCAC2
CAC-N
UCAC-N
RCC2
RCS
PCC
SHC
MCP
GLC
MFC
BBS
RRC
GRC
RV3*
NHS
HR
LN
Hand
Chuk
MecHnd/Chuk
ShkAbs
FJ
FK
SpdContr
Ending

UCAC-N32/N40 Series

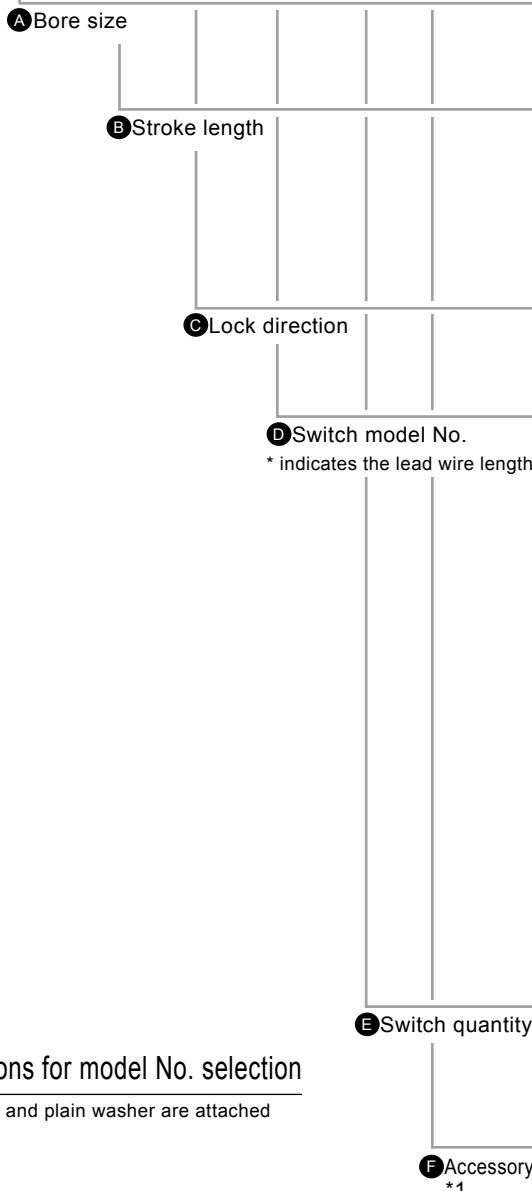
How to order

● Without switch (built-in magnet for switch)

UCAC - N32 - 50 - B - Y

● With switch (built-in magnet for switch)

UCAC - N32 - 50 - B - T0H - D - Y



Code	Content				
A Bore size (mm)					
N32	φ32				
N40	φ40				
B Stroke length (mm)					
50	50				
75	75				
100	100				
125	125				
150	150				
C Lock direction					
F	Forward locking				
B	Backward locking				
D Switch model No.					
Axial lead wire	Radial lead wire	Contact	Voltage AC/DC	Display	Lead wire
T0H*	T0V*	Reed	● ●	1-color display	2-wire
T5H*	T5V*		● ●	Without indicator lamp	
T8H*	T8V*		● ●	1-color display	
T1H*	T1V*	Proximity	●	1-color display	2-wire
T2H*	T2V*				
T3H*	T3V*		●	3-wire	
T3PH*	T3PV*		●	1-color display (custom order)	3-wire
T2YH*	T2YV*		●	2-color display	2-wire
T3YH*	T3YV*		●		
T2YD*	-		●	2-color display	2-wire
T2YDT*	-		●	AC magnetic field	
T2JH*	T2JV*	●	1-color display off-delay	2-wire	
* Lead wire length (m)					
Blank	1 (standard)				
3	3 (option)				
5	5 (option)				
E Switch quantity					
R	1 on rod side				
H	1 on head side				
D	2				
F Accessory					
Blank	Without accessory (rod eye)				
Y	Rod clevis (pin, split pin and plain washer attached)				

⚠ Precautions for model No. selection

*1: A pin, split pin, and plain washer are attached with Y.

[Example of model No.]

UCAC-N32-50-B-T0H-D-Y

Model: Lightweight position locking clamp cylinder double acting

- A Bore size : φ32 mm
- B Stroke length : 50 mm
- C Lock direction : Backward locking
- D Switch model No. : Reed switch T0H, lead wire length 1 m
- E Switch quantity : 2
- F Accessory : Rod clevis

How to order switch

A) Switch body + mounting bracket set

CMK2 - **T0H** - **32**

Bore size
(Item **A** on the previous page)

Switch model No.
(Item **D** on the previous page)

B) Switch body only

SW - **T0H3**

Switch model No.
(Item **D** on the previous page)

C) Mounting bracket set

CMK2 - **T** - **32**

Bore size
(Item **A** on the previous page)

LCW
LCR
LCG
LCX
LCM
STM
STG
STS/STL
STR2
UCA2
ULK*
JSK/M2
JSG
JSC3/JSC4
USSD
UFCD
USC
JSB3
LMB
LML
HCM
HCA
LBC
CAC4
UCAC2
CAC-N
UCAC-N
RCC2
RCS
PCC
SHC
MCP
GLC
MFC
BBS
RRC
GRC
RV3*
NHS
HR
LN
Hand
Chuk
MecHnd/Chuk
ShkAbs
FJ
FK
SpdContr
Ending

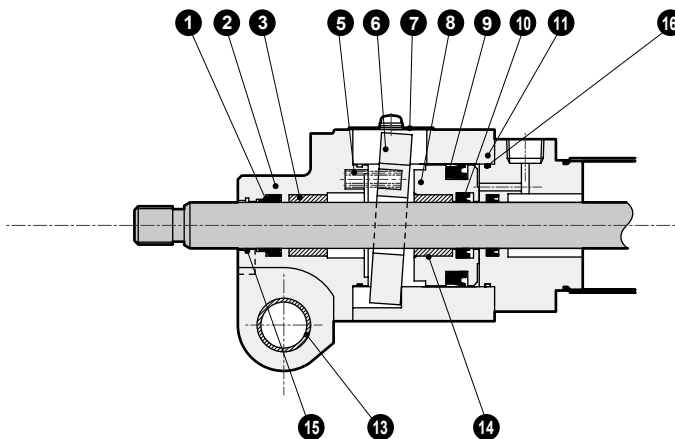
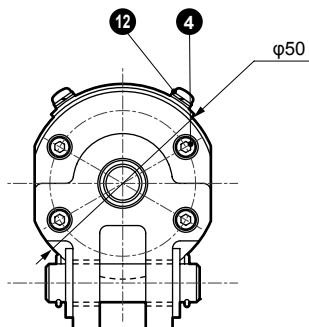
UCAC-N32/N40 Series

LCW
LCR
LCG
LCX
LCM
STM
STG
STS/STL
STR2
UCA2
ULK*
JSK/M2
JSG
JSC3/JSC4
USSD
UFCD
USC
JSB3
LMB
LML
HCM
HCA
LBC
CAC4
UCAC2
CAC-N
UCAC-N
RCC2
RCS
PCC
SHC
MCP
GLC
MFC
BBS
RRC
GRC
RV3*
NHS
HR
LN
Hand
Chuk
MecHnd/Chuk
ShkAbs
FJ
FK
SpdContr
Ending

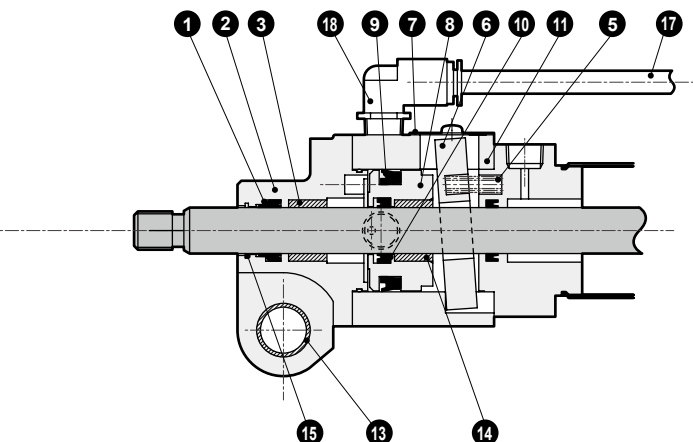
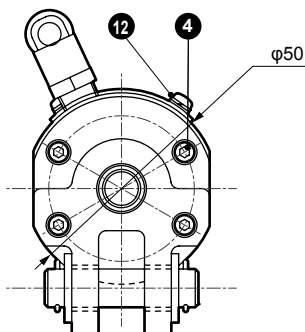
Internal structure and parts list

* The cylinder is the same as CAC-N32/N40. Refer to page 1034.

● With backward locking (UCAC-N32/N40-B)



● With forward locking (UCAC-N32/N40-F)



Cannot be disassembled

No.	Part name	Material	Remarks	No.	Part name	Material	Remarks
1	Scraper	Nitrile rubber		10	Lock rod packing	Nitrile rubber	
2	Rod cover	Aluminum alloy die-casting	Alumite	11	Intermediate cover	Aluminum alloy	Alumite
3	Metal	Copper-based		12	Cross-recessed pan head machine screw	Carbon steel	Chromate
4	Hexagon socket head cap screw	Alloy steel		13	Bush for clevis	Dry bearing	
5	Spring	Steel	Black finish	14	Metal	Copper alloy	
6	Lock plate	Cast iron		15	Metal scraper	Copper alloy	
7	Dust cover	Stainless steel		16	Gasket	Nitrile rubber	
8	Release piston	Aluminum alloy	Alumite	17	Bypass tube		
9	Lock piston packing	Nitrile rubber		18	Push-in fitting		

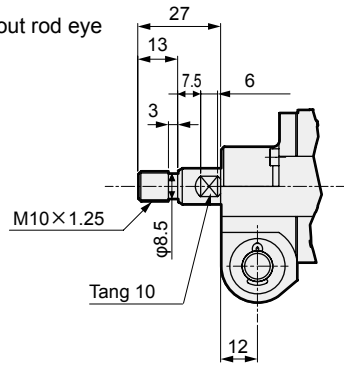
Note: The cylinder is a swaging type and cannot be disassembled.

Also, do not disassemble the lock as it may lead to a decrease in holding force.



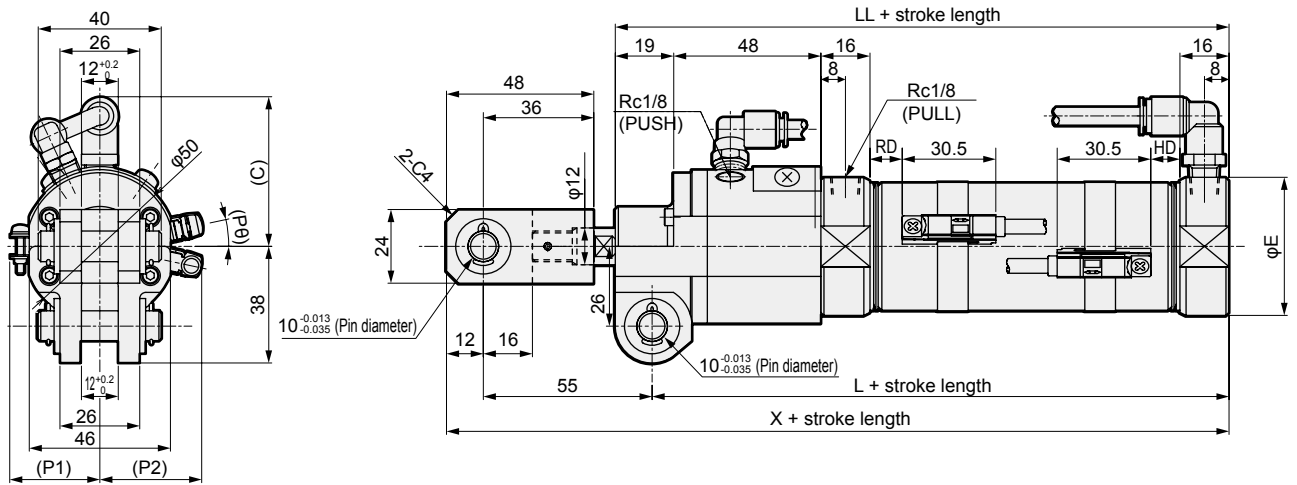
LCW
LCR
LCG
LCX
LCM
STM
STG
STS/STL
STR2
UCA2
ULK*
JSK/M2
JSG
JSC3/JSC4
USSD
UFCD
USC
JSB3
LMB
LML
HCM
HCA
LBC
CAC4
UCAC2
CAC-N
UCAC-N
RCC2
RCS
PCC
SHC
MCP
GLC
MFC
BBS
RRC
GRC
RV3*
NHS
HR
LN
Hand
Chuk
MecHnd/Chuk
ShkAbs
FJ
FK
SpdContr
Ending

● Without rod eye

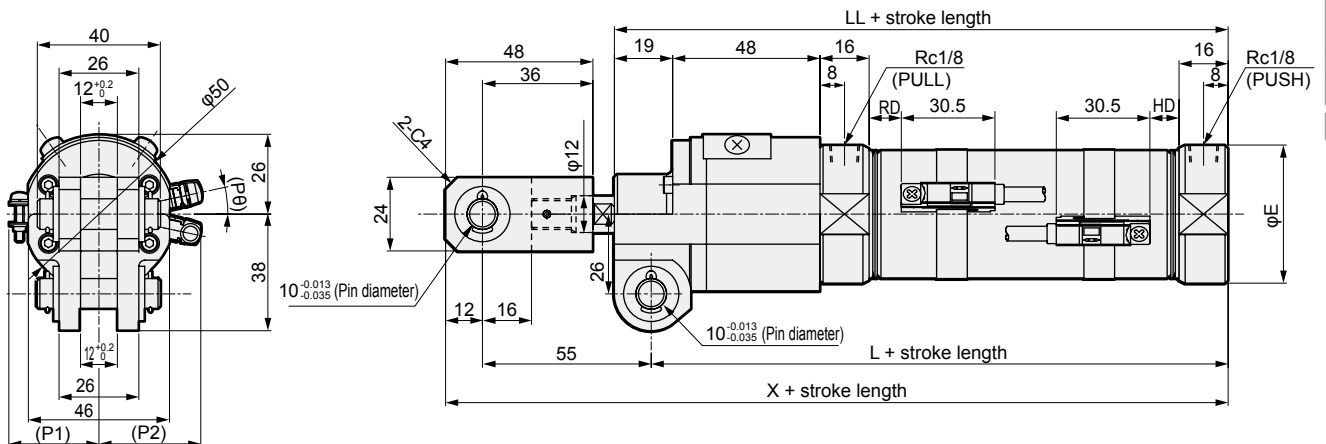


● With rod clevis (Y)

• With forward locking (UCAC-N32/N40-F)



• With backward locking (UCAC-N32/N40-B)

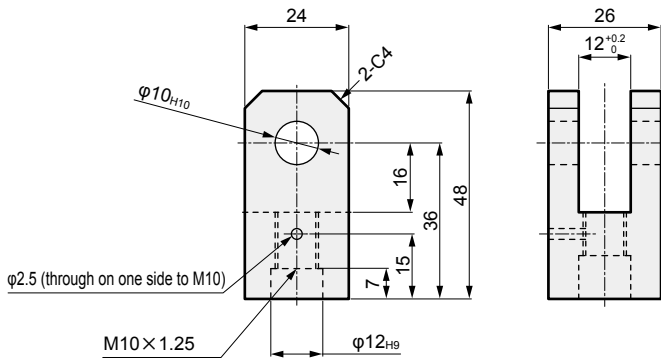


Code	C	E	L	LL	X	P1	P2	Pθ	RD	HD
φ32	44	36	124	136	191	25	29	15°	8.5	7.5
φ40	49	45	128	140	195	29	33	12°	10.5	9.5

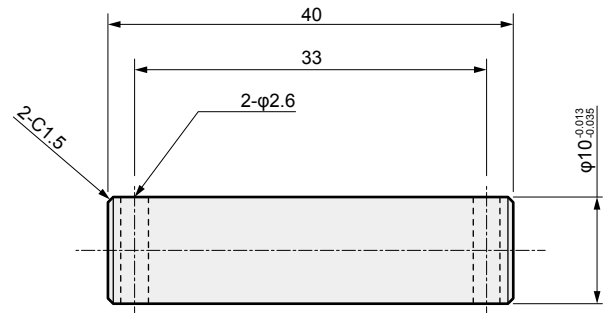
CAC-N32/N40/UCAC-N32/N40 Series

Accessory dimensions

● Rod clevis (Y) Material: Steel
Zinc chromate treatment



● Clevis pin Material: Steel
Zinc chromate treatment



* A pin, split pin, spring pin and plain washer are attached.

Model No.	Applicable clamp	Weight (kg)
CAC-N-Y	CAC-N, UCAC-N	0.15

* A split pin and flat washer are attached.

Model No.	Applicable clamp	Weight (kg)
CAC-N-P	CAC-N, UCAC-N	0.02

LCW
LCR
LCG
LCX
LCM
STM
STG
STS/STL
STR2
UCA2
ULK*
JSK/M2
JSG
JSC3/JSC4
USSD
UFCD
USC
JSB3
LMB
LML
HCM
HCA
LBC
CAC4
UCAC2
CAC-N
UCAC-N
RCC2
RCS
PCC
SHC
MCP
GLC
MFC
BBS
RRC
GRC
RV3*
NHS
HR
LN
Hand
Chuk
MecHnd/Chuk
ShkAbs
FJ
FK
SpdContr
Ending