



# Small jaw

● Material : Iron, engineering plastic



## Features

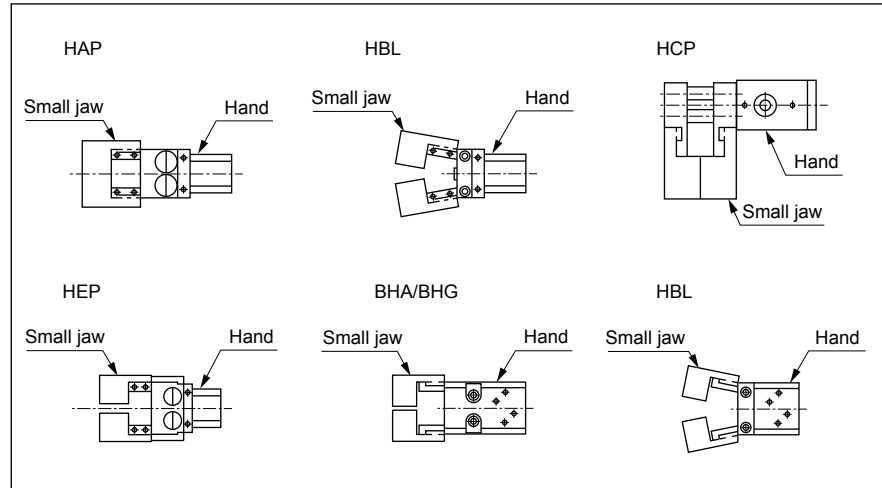
A variety of small jaws (soft) is available to match user machining needs.

● Socket and spigot section machined  
 Troublesome reference section (spigot section) machined.

Wide series variation to select according to workpiece shape and dimension.

● 2 types of material for small jaw  
 Iron (S50C) and engineering plastic (MC nylon) are available for optimum selection according to material and working condition of workpiece.

## Compatible model for standard small jaw



## Small jaw applications

Hand applications		
Soft jaw	Compact workpiece	Large workpiece
Miscellaneous shape workpieces	Vertical grasp (inside tensile workpiece)	Vertical grasp

How to order (Note : When ordering repair parts, 1 pc. is provided.)

**BHA** - **Y1** - **110**

● A Model ● B Material ● C Small jaw No.

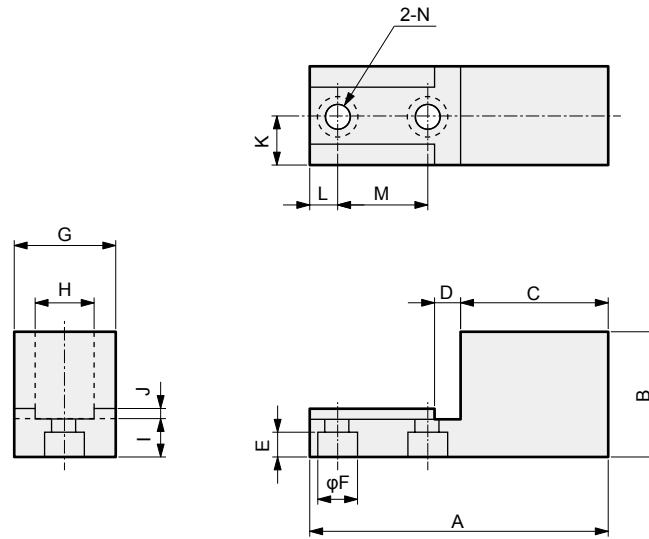
A Model		B Material		C Small jaw No.			
Code	Content	Code	Content	Code	Compatibility	Code	Compatibility
<b>FH</b>	Feather hand (FH100/FH500)	<b>Y1</b>	Material S50C	<b>110</b>	HAP-1C	<b>210</b>	HEP-5CS
<b>HAP</b>	Parallel hand	<b>Y2</b>	Material MC nylon	<b>120</b>	HAP-2CS, HBL-2CS	<b>310</b>	FH110, FH510
<b>BHA</b>	Compact cross roller parallel hand			<b>130</b>	HAP-3CS, HBL-3CS	<b>320</b>	FH112, FH512
<b>BHG</b>	Compact cross roller parallel hand with rubber cover			<b>140</b>	HAP-4CS, HBL-4CS	<b>330</b>	FH116, FH516
<b>HEP</b>	Bearing parallel hand			<b>150</b>	HBL-1CS	<b>340</b>	FH120, FH520
<b>HCP</b>	Lateral parallel hand			<b>160</b>	HCP-2CS	<b>350</b>	FH125
<b>HBL</b>	Fulcrum hand			<b>170</b>	HCP-3CS	<b>260</b>	BHA-01CS1, BHG-01CS
				<b>180</b>	HCP-4CS	<b>270</b>	BHA-03CS1, BHG-03CS
				<b>190</b>	HEP-3.5CS	<b>280</b>	BHA-04CS1, BHG-04CS
				<b>200</b>	HEP-4CS	<b>290</b>	BHA-05CS1, BHG-05CS

- LCW
- LCR
- LCG
- LCX
- LCM
- STM
- STG
- STS/STL
- STR2
- UCA2
- ULK\*
- JSK/M2
- JSG
- JSC3/JSC4
- USSD
- UFCD
- USC
- JSB3
- LMB
- LML
- HCM
- HCA
- LBC
- CAC4
- UCAC2
- CAC-N
- UCAC-N
- RCC2
- RCS
- PCC
- SHC
- MCP
- GLC
- MFC
- BBS
- RRC
- GRC
- RV3\*
- NHS
- HR
- LN
- Hand
- Chuk
- MecHnd/Chuk
- ShkAbs
- FJ
- FK
- SpdContr
- Ending
- LSH
- FH100
- HAP
- BSA2
- BHA/BHG
- LHA
- LHAG
- HKP
- HLA/HLB
- HLAG/HLBG
- HLD
- HCP
- HMFB
- HFP
- HLC
- HGP
- FH500
- HBL
- HDL
- HMD
- HJD
- HJL
- BHE

## Dimensions



● 110 to 350



\* Material  
Y1: S50C  
Y2: MC nylon

Small jaw No.	Compatibility	* Material	Dimensions (mm)														Weight (g)
			A	B	C	D	E	φF	G	H <sup>+0.02</sup>	I	J	K	L	M	φN	
110	HAP-1C	Y1	40	17	24.5	4.5	3	6	10	8	5	1.5	5	3.5	8	3.5	39
		Y2		21							9						8
120	HAP-2CS HBL-2CS	Y1	50	26	28	5.5	4	8	20	10	6	2	10	5	12	4.5	135
		Y2		30							10						25
130	HAP-3CS HBL-3CS	Y1	60	33	30.5	6.5	5	9.5	20	12	8	2	10	5.5	18	5.5	194
		Y2															
140	HAP-4CS HBL-4CS	Y1	80	43	44	7.5	6	11	20	14	10	2	10	8	20	6.5	352
		Y2		50							17						53
150	HBL-1C	Y1	40	19	19	4.5	3	6	12	8	5	1.5	6	4	10	3.5	44
		Y2			21												7
160	HCP-2CS	Y1	60	29	33	9.5	5	9.5	22	18 <sup>+0.2</sup> <sub>-0.1</sub>	9	2	11	11	10	5.5	206
		Y2															
170	HCP-3CS	Y1	70	35	34	11.5	6	11	25	20 <sup>+0.2</sup> <sub>-0.1</sub>	10	2	12.5	8	20	6.5	303
		Y2															
180	HCP-4CS	Y1	80	40	42	13	6	11	35	25 <sup>+0.2</sup> <sub>-0.1</sub>	10	2	17.5	10	20	6.5	563
		Y2												78			44
190	HEP-3.5CS	Y1	80	41	50	7.5	5	9.5	20	14	10	2	10	6	18	5.5	360
		Y2		49							18						70
200	HEP-4CS	Y1	120	60	81	11.5	6	11	30	22	13	2	15	8	20	6.5	1245
		Y2		77							30		16				270
210	HEP-5CS	Y1	135	60	91	14.5	8	14	30	28	16	2	15	10	25	8.5	1443
		Y2		79							35		19				382
310	FH110 FH510	Y1	29.5	15	14	4.5	3	6	12	7	4	1.5	6	3.5	8	3.5	22
		Y2															
320	FH112 FH512	Y1	29.5	16.5	14	4.5	3	6	12	7	4	1.5	6	3.5	8	3.5	23
		Y2															
330	FH116 FH516	Y1	39	20	20.5	5.5	4	8	12	10	5	1.5	6	3.5	10	4.5	48
		Y2															
340	FH120 FH520	Y1	39	22.5	20.5	5.5	4	8	12	10	5	1.5	6	3.5	10	4.5	53
		Y2		25.5							8						10
350	FH125	Y1	48.5	22.5	28.5	6.5	5	9.5	14	12	8	2	7	4.5	10	5.5	105
		Y2		25.5							14						17
260	BHA-01CS1 BHG-01CS	Y1	30	17.5	14.5	4.5	3	6	14	10	5	1.5	7	4	8	3.5	38
		Y2															
270	BHA-03CS1 BHG-03CS	Y1	40	21	21	5.5	4	8	14	10	6	1.5	7	4.5	10	4.5	61
		Y2		23							8						11
280	BHA-04CS1 BHG-04CS	Y1	40	26.5	21	5.5	4	8	14	10	6	1.5	7	4.5	10	4.5	76
		Y2		29.5							9						12
290	BHA-05CS1 BHG-05CS	Y1	50	33	28.5	6.5	5	9.5	14	10	8	2	7	6	10	5.5	123
		Y2		39							14						23

LCW
LCR
LCG
LCX
LCM
STM
STG
STS/STL
STR2
UCA2
ULK*
JSK/M2
JSG
JSC3/JSC4
USSD
UFCD
USC
JSB3
LMB
LML
HCM
HCA
LBC
CAC4
UCAC2
CAC-N
UCAC-N
RCC2
RCS
PCC
SHC
MCP
GLC
MFC
BBS
RRC
GRC
RV3*
NHS
HR
LN
<b>Hand</b>
Chuk
MecHnd/Chuk
ShkAbs
FJ
FK
SpdContr
Ending
LSH
FH100
HAP
BSA2
BHA/BHG
LHA
LHAG
HKP
HLA/HLB
HLAG/HLBG
HLD
HCP
HMF
HMFB
HFP
HLC
HGP
FH500
HBL
HDL
HMD
HJD
HJL
BHE