

# 4GR unit valve

## Specifications

Items	Description	
Type of valve and operation method	Pilot operated soft spool valve	
Using fluid	Compressed air	
Max. working pressure	MPa	0.7
Min. working pressure	MPa	0.2
Resist pressure	MPa	1.05
Ambient temperature	°C	-5 to 55 (no freezing)
Fluid temperature	°C	5 to 55
Manual override	Locking/non-locking common type (Standard)	
Lubrication Note 1	Not required	
Protective structure Note 2	Dust proof	
Resist vibration	m/s <sup>2</sup>	50 or less
Resist impact	m/s <sup>2</sup>	300 or less
Working environment	Not subject to corrosive gas, etc.	
Mass Note 3	g	180

Note 1: Use the turbine oil Class ISO VG 32 if lubricated. Excessive or intermittent lubrication results in instable operation.

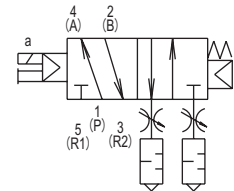
Note 2: Check that water drops or oil, etc., do not come into contact.

Note 3: It is in case of 4GE210R-H6-E2-FL639941-3.

## Electric specifications

Items	Description		
Rated voltage	V	DC	12, 24
		AC	100
Rated voltage fluctuation range		±10%	
Holding current	A	DC24V	0.017
		DC12V	0.034
		AC100V	0.009
Power consumption	W	DC24V	0.4
		DC12V	0.4
Apparent power	VA	AC100V	0.98
Heat proof class		B	
Surge suppressor	DC	Zener diode	
	AC	Diode	
Indicator		LED	

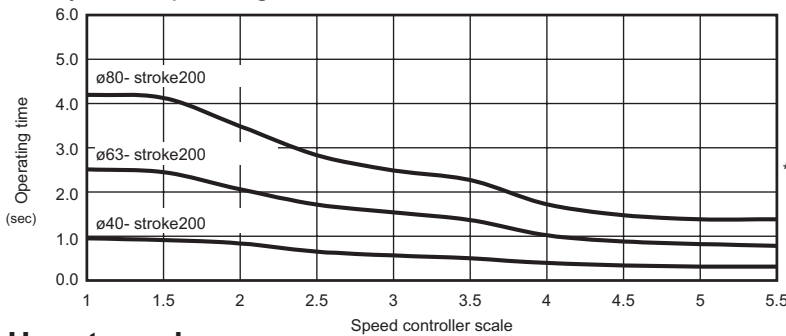
JIS symbol (example: 4GE210R)



Conditions  
SCA2, no load,  
vertical, piping tube  
ø6-1 m 0.5MPa

\* The cylinder operating time is the data from a test in our company. It does not indicate a guaranteed performance range.

## Cylinder operating time



## How to order

**4GE2 1 0R - H6 - E2 - FL639941 - 3**

Model No. **A** Solenoid position

--	--	--	--	--	--	--	--	--	--

**B** Port size (P, A, B port)

--	--	--	--	--	--	--	--	--	--

**C** Electrical connections

--	--	--	--	--	--	--	--	--	--

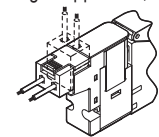
**D** Option

--	--	--	--	--	--	--	--	--	--

**E** Voltage

--	--	--	--	--	--	--	--	--	--

Code	Description	
<b>A Solenoid position</b>		
1	2 position single	
2	2 position double	
3	3 position all port closed	
4	3 position A/B/R connection	
5	3 position P/A/B connection	
<b>B Port size (P,A,B port)</b>		
H6	ø6 push-in joint	
H8	ø8 push-in joint	
HL6	ø6 Elbow joint	
HL8	ø8 Elbow joint	
<b>C Electrical connections</b>		
E shaped connector (axial/ radial)		
E2	Lead wire (300 mm)	With surge suppressor, lamp
E20	Lead wire (500 mm)	
E21	Lead wire (1000 mm)	
E22	Lead wire (2000 mm)	
E23	Lead wire (3000 mm)	
<b>D Option</b>		
Blank	Manual override for non lock and lock	
P2	With magnet (temporarily attach for installation)	
<b>E Voltage</b>		
1	100VAC (rectified bridge integrated)	
3	24VDC	
4	12VDC	

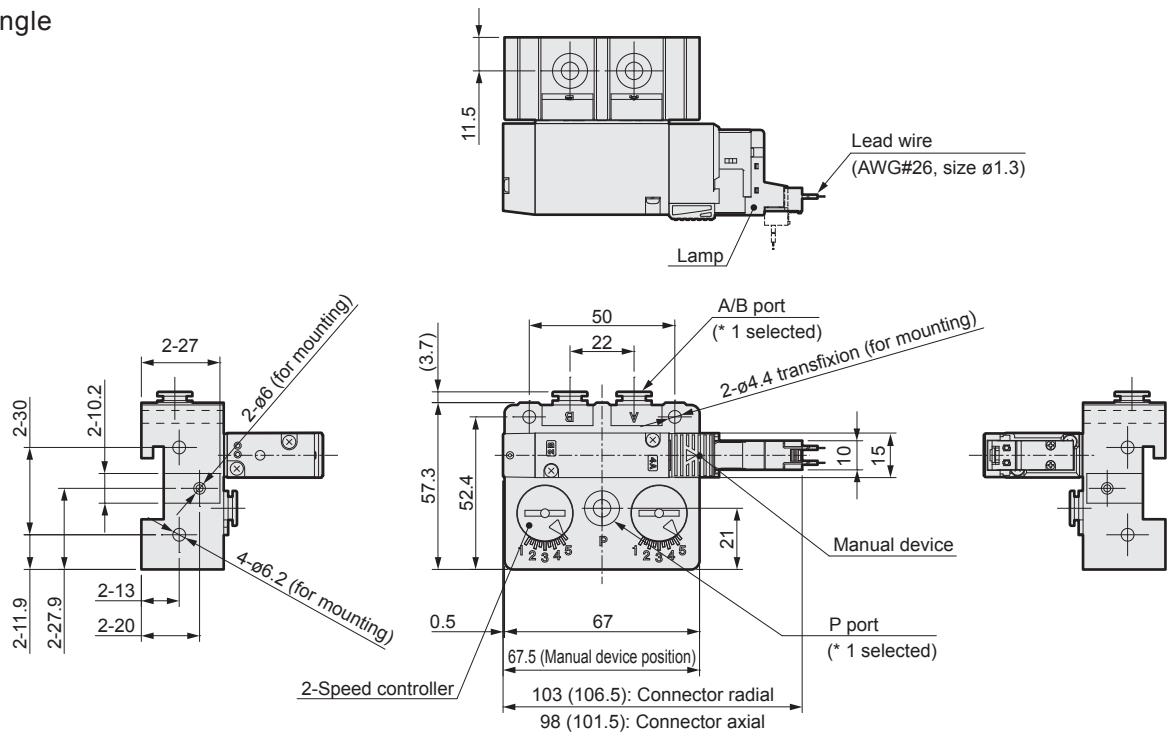


## Cautions

Note: Electrical connections other than the E type are also available. Contact our sales representatives for other specifications and options. (Related catalog No.CC-1087)

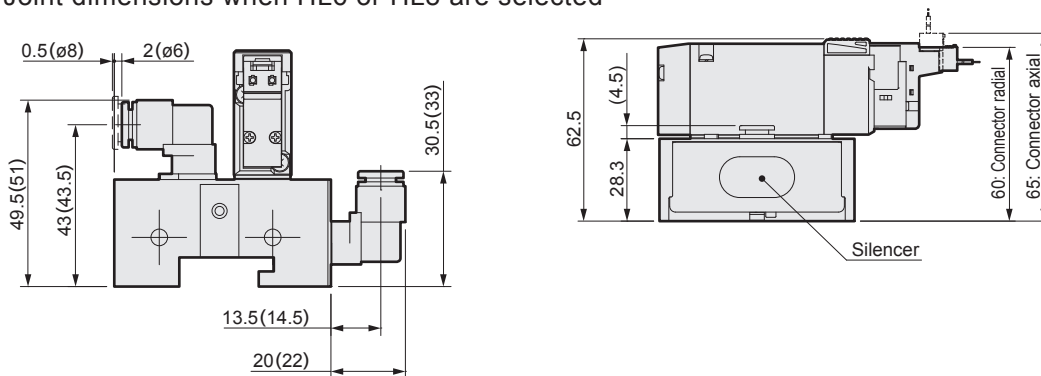
Dimensions

● 2 position single



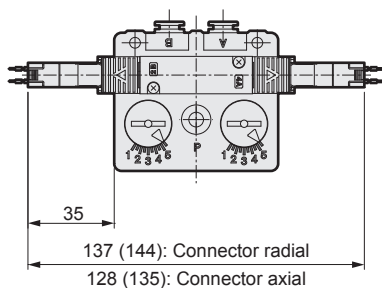
\* Figures in ( ) are for 100VAC.

● Joint dimensions when HL6 or HL8 are selected

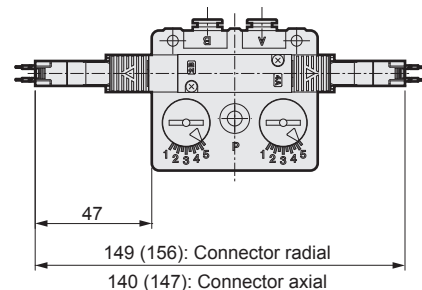


\* Figures in ( ) are for HL8.

● 2 position double

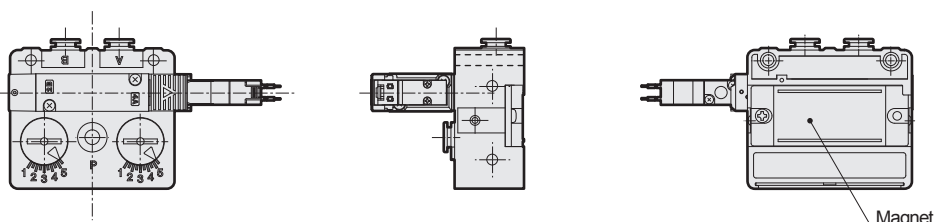


● 3 position



\* Inside of ( ) is when AC is 100VAC

● With magnet (optional)



\* Temporary attachment during installation