



Equivalent to "DIN3394" groups A and B
For double cutoff compliant with intermediate pressure (7 kPa) specifications

Gas cutoff valve (quick open) **MN Series**

- City gas/natural gas/LPG
- Port size: Rp1/2, Rp3/4 / Rp1

RoHS

Features

- The DC driven actuator with rectifier has eliminated noise and coil burnout for safety.
- Built-in strainer for a structure that stops foreign matter such as dust in front of the valve during piping.
- Equipped with JIS standard conduit thread, making electrical wiring easy.
- Dust-proof and drip-proof

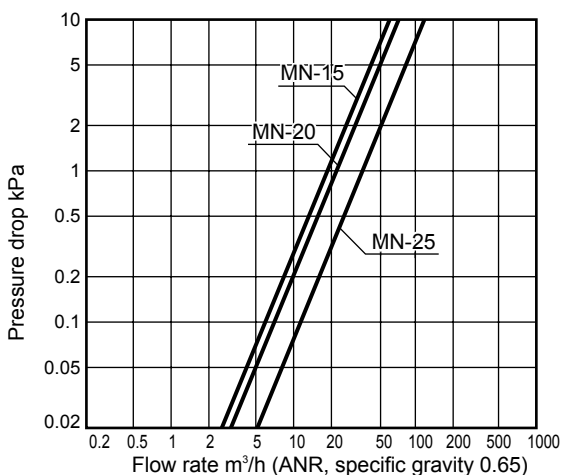
Main applications

- Gas boilers
- Industrial furnaces
- Gas absorption water coolers/heaters
- Drying furnaces
- Others

Specifications

Descriptions	MN-15	MN-20	MN-25
Working fluid	City gas/natural gas/LPG		
Working pressure	kPa 0 (≈0 psi, 0 bar) to 7 (≈1 psi, 0.07 bar)		
Flow rate <small>Specific gravity of natural gas 0.65 △P = 0.25 kPa</small> m ³ /h (ANR)	9.7	10.4	18.6
Cv	6.5	7.0	12.5
Rated voltage	V 100 AC ^{+10%} / _{-15%} 200 AC ^{+10%} / _{-15%}		
Frequency	Hz Common to 50 and 60		
Power consumption (apparent power)	VA 26		
Ambient temperature	°C -20 (-4°F) to +60 (140°F) (no freezing)		
Opening time	s 0.5 or less		
Closing time	s 1.0 or less		
Frequency	Cycle/min. 30 or less		
Flow rate adjustment	% 30 to 100		
Mounting orientation	Vertical direction with the coil on top		
Connection	Screw-in (Rp)		
Port size	1/2	3/4	1
Weight	kg 0.7	1.4	1.5
Proof pressure	MPa 0.1 (≈15 psi, 1 bar)		

Flow characteristics



Reference: conversion coefficient

Converted flow rate = (flow rate in table) x (coefficient)

Gas type	Natural gas (13A)	City gas (6B.6C)	Propane	Butane	Butane-air (6A)
Specific gravity (air = 1)	0.65	0.54	1.6	2.0	1.25
Coefficient	1.0	1.09	0.63	0.57	0.72

How to order

MN - 15 - AC100V

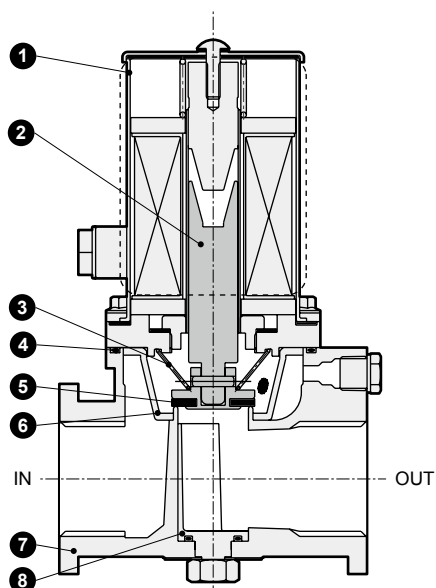
Model No.

A Port size

B Voltage

Code	Content
A Port size	
15	Rp1/2
20	Rp3/4
25	Rp1
B Voltage	
AC100V	100 VAC 50/60 Hz
AC200V	200 VAC 50/60 Hz

Internal structure and parts list

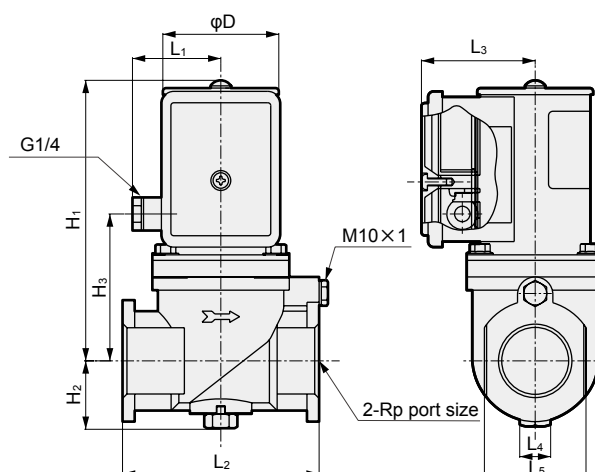


Cannot be disassembled

No.	Part name	Material
1	Bonnet	Steel
2	Plunger	Stainless steel
3	Spring	Stainless steel wire
4	O-ring	Nitrile rubber
5	Valve disc	Nitrile rubber
6	Strainer	Resin
7	Body	Aluminum die-casting
8	Flow rate adjusting cock	Aluminum die-casting

Dimensions

● MN-15 to 25



Code Model No.	Port size	H ₁	H ₂	H ₃	L ₁	L ₂	L ₃	L ₄	L ₅	φD
MN-15	1/2	122	24	61.5	40.0	69	52	13	32	52
MN-20	3/4	126	30.5	65.5	40.0	89	52	13	46	52
MN-25	1	126	30.5	65.5	40.0	89	52	13	46	52