

Intermediate pressure gas combination valve

GHV Series

- City gas/natural gas/LPG
- Port size: Rp1, Rp1¹/₄, Rp1¹/₂, Rp2



EXA
FWD
HNB/G
USB/G
FAB/G
FGB/G
FVB
FWB/G
FHB
FLB
AB
AG
AP/
AD
APK/
ADK
DryAir
EX-
XPLNprf
XPLNprf
HVB/
HVL
SAB/
NAB
LAD/
NAD
Water-
Rela
NP/NAP/
NVP
SNP
CHB/G
MXB/G
Other
valves
SWD/
MWD
DustColl
CVE/
CVSE
CCH/
CPE/D
LifeSci
Gas-
Combust
Auto-
Water
SpecFld
Custom
Ending

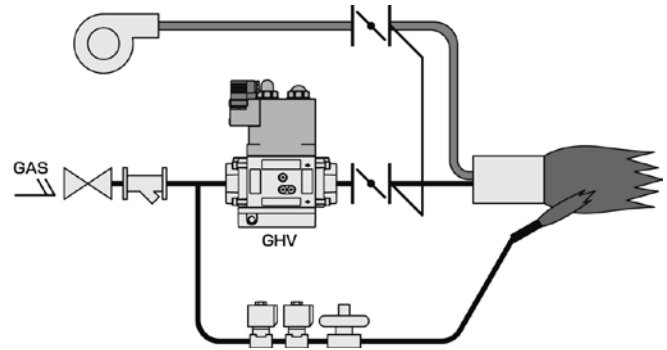
Features

- Integrated structure/space-saving
Compactly integrated two solenoid valves with governor function Interface 1/3 (50A, compared to CKD conventional products)
Supports JIS B 8415 double cutoff with a single unit, realizing space saving of equipment/systems.
- Wiring and piping work-hour reduction (solenoid valve is simultaneous energizing)
By integrating double cutoff, wiring and piping hours can be reduced by one machine worth.
- Up to intermediate pressure (up to 50 kPa) allowed
- Selectable variations
 - Solenoid valve with built-in governor + solenoid valve
 - Solenoid valve + solenoid valve
 - Solenoid valve + solenoid valve (slow open)
- Option
With closing confirmation switch
- Port size change is easy
Port size can be changed by replacing the flange from 25A to 50A
- ISO23551-1, ISO23551-2 compliant

Main applications

- Gas boilers
- Industrial furnaces
- Gas absorption water coolers/heaters
- Drying furnaces

System example



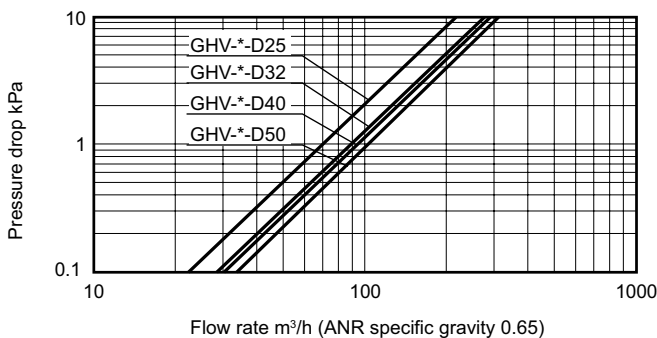
Specifications

1 MPa = 10 bar

Descriptions	GHV-G				GHV-N				GHV-L			
	-D25	-D32	-D40	-D50	-D25	-D32	-D40	-D50	-D25	-D32	-D40	-D50
Working fluid	City gas/natural gas/LPG											
Working pressure kPa	0 (≈0 psi, 0 bar) to 50 (≈7.2 psi, 0.5 bar)											
Secondary pressure kPa	0.4 (≈0.06 psi) to 2.0 (≈0.29 psi)				-							
Flow rate <small>Specific gravity of natural gas 0.65 ΔP = 0.25 kPa</small> m ³ /h(ANR)	35	43.7	47.5	51	35	43.7	47.5	51	35	43.7	47.5	51
Rated voltage V	100 AC ^{+10%} / _{-15%}				200 AC ^{+10%} / _{-15%}							
Frequency Hz	Common in 50 and 60											
Power consumption (apparent power) VA	80											
Ambient temperature °C	-15 (5°F) to 70 (158°F) (no freezing) (*1)								-15 (5°F) to 60 (140°F) (no freezing)			
Closing time s	1.0 or less											
Frequency Cycle/min.	10 or less								1 or less			
Mounting orientation	Range of vertical direction with the coil on top to horizontal direction with the coil horizontal. (vertical piping installation available)											
Connection	Screw-in (Rp)											
Port size	1	1 ¹ / ₄	1 ¹ / ₂	2	1	1 ¹ / ₄	1 ¹ / ₂	2	1	1 ¹ / ₄	1 ¹ / ₂	2
Weight kg	6.1				5.5				5.8			
Proof pressure kPa	75 (≈11 psi, 0.75 bar)											
Opening time s	-				1 or less				Approx. 10			
Start gas adjustment %	-				-				0 to 70			
Re-energizing intermission time s	-				-				5 or more			

*1 : When type with closing confirmation switch is selected, -15 to 60 (no freezing)

Flow characteristics

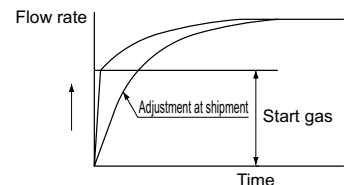


Reference: conversion coefficient

Converted flow rate = (flow rate in table) x (coefficient)

Gas type	Natural gas (13A)	City gas (6B.6C)	Propane	Butane
Specific gravity (air = 1)	0.65	0.54	1.6	2.0
Coefficient	1.0	1.09	0.63	0.57

Opening characteristics (GHV-L)



How to order

GHV - **G** - **D40** - **E** - **AC100V**

Model No.

A Variation

B Port size

C Option

D Voltage

Code	Content
A Variation	
G	Solenoid valve with built-in governor + solenoid valve
N	Solenoid valve + solenoid valve
L	Solenoid valve + solenoid valve (slow open)
B Port size	
D00	Without flange
D25	Rp1
D32	Rp1 ¹ / ₄
D40	Rp1 ¹ / ₂
D50	Rp2
C Option	
Blank	None
E	With closing confirmation switch
D Voltage	
AC100V	100 VAC 50 Hz/60 Hz
AC200V	200 VAC 50 Hz/60 Hz

● Flange set

GHV - **FLANGE** - **D40**

Model No.

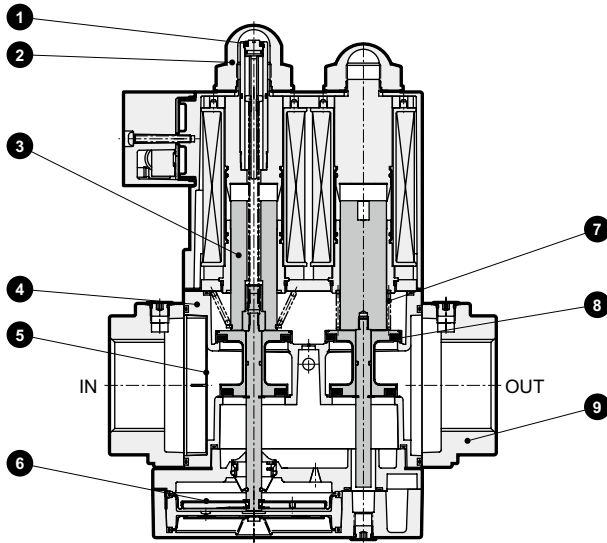
A Port size

Code	Content
A Port size	
D25	Rp1
D32	Rp1 ¹ / ₄
D40	Rp1 ¹ / ₂
D50	Rp2

- EXA
- FWD
- HNB/G
- USB/G
- FAB/G
- FGB/G
- FVB
- FWB/G
- FHB
- FLB
- AB
- AG
- AP/
AD
- APK/
ADK
- DryAir
- EX-
XPLNprf
- XPLNprf
- HVB/
HVL
- S[◇]B/
NAB
- LAD/
NAD
- Water-
Rela
- NP/NAP/
NVP
- SNP
- CHB/G
- MXB/G
- Other
valves
- SWD/
MWD
- DustColl
- CVE/
CVSE
- CCH /
CPE/D
- LifeSci
- Gas-
Combus
- Auto-
Water
- SpecFld
- Custom
- Ending

EXA
FWD
HNB/G
USB/G
FAB/G
FGB/G
FVB
FWB/G
FHB
FLB
AB
AG
AP/
AD
APK/
ADK
DryAir
EX-
XPLNprf
XPLNprf
HVB/
HVL
SAB/
NAB
LAD/
NAD
Water-
Rela
NP/NAP/
NVP
SNP
CHB/G
MXB/G
Other
valves
SWD/
MWD
DustColl
CVE/
CVSE
CCH /
CPE/D
LifeSci
Gas-
Combus
Auto-
Water
SpecFld
Custom
Ending

Internal structure and parts list



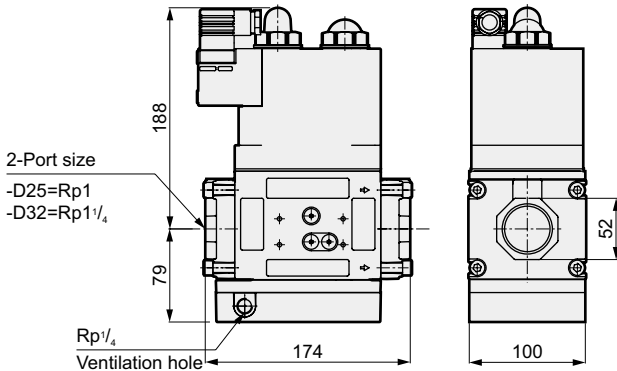
Cannot be disassembled

No.	Part name	Material
1	Pressure adjustment screw	Stainless steel
2	Governor cap	Resin
3	Plunger	Steel
4	Body	Aluminum die-casting
5	Strainer	Resin
6	Diaphragm	Nitrile rubber
7	Spring	Stainless steel, spring steel
8	Valve	Nitrile rubber/aluminum die-casting
9	Flange	Aluminum die-casting

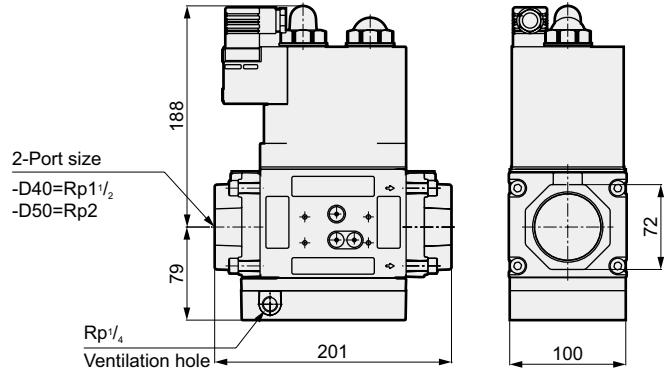
Dimensions

● Solenoid valve with built-in governor + solenoid valve

● GHV-G-D25/D32

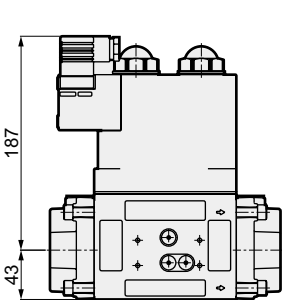


● GHV-G-D40/D50



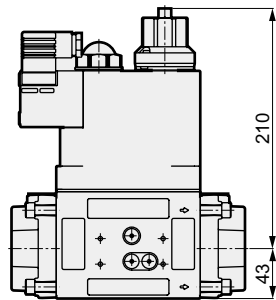
● Solenoid valve + solenoid valve

● GHV-N-D25 to D50



● Solenoid valve + solenoid valve (Slow open)

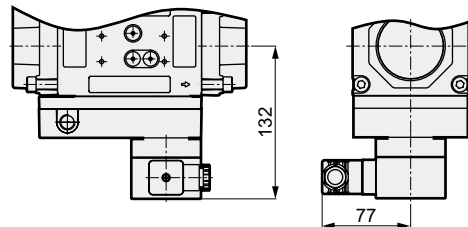
● GHV-L-D25 to D50



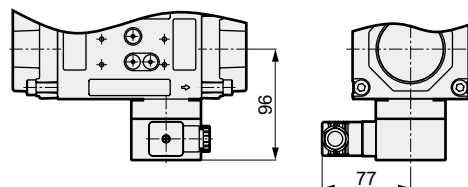
Optional dimensions

● Closing confirmation switch

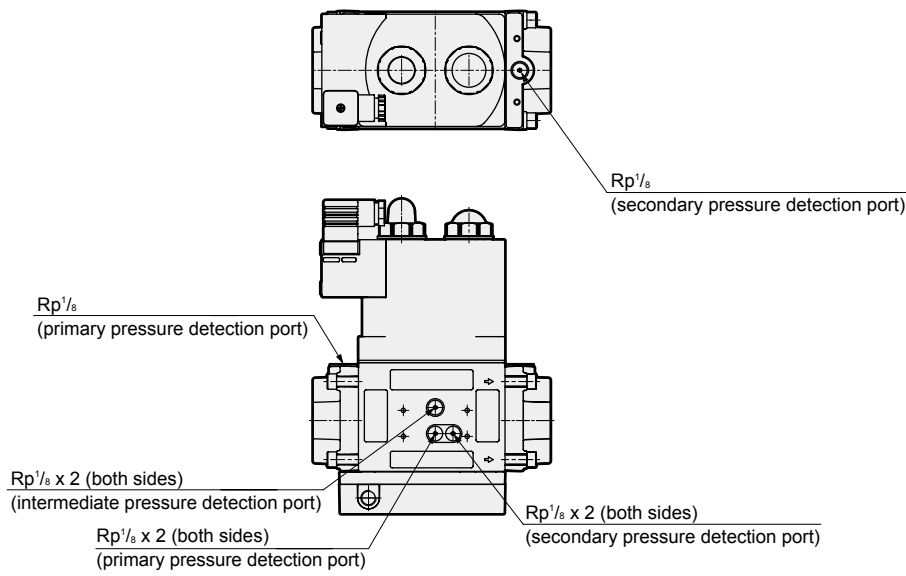
● GHV-G-D25 to D50-E



● GHV-N-D25 to D50-E



Pressure detection port layout drawing



EXA
FWD
HNB/G
USB/G
FAB/G
FGB/G
FVB
FWB/G
FHB
FLB
AB
AG
AP/ AD
APK/ ADK
DryAir
EX- XPLNprf
XPLNprf
HVB/ HVL
S ∇ B/ NAB
LAD/ NAD
Water- Rela
NP/NAP/ NVP
SNP
CHB/G
MXB/G
Other valves
SWD/ MWD
DustColl
CVE/ CVSE
CCH / CPE/D
LifeSci
Gas- Combus
Auto- Water
SpecFld
Custom
Ending