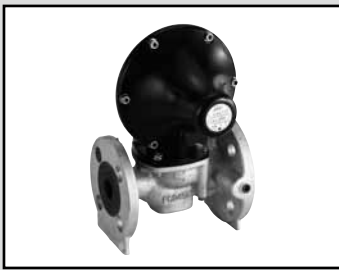


EXA
FWD
HNB/G
USB/G
FAB/G
FGB/G
FVB
FWB/G
FHB
FLB
AB
AG
AP/
AD
APK/
ADK
DryAir
EX-
XPLNprf
XPLNprf
HVB/
HVL
S $\hat{\Delta}$ B/
NAB
LAD/
NAD
Water-
Rela
NP/NAP/
NVP
SNP
CHB/G
MXB/G
Other
valves
SWD/
MWD
DustColl
CVE/
CVSE
CCH /
CPE/D
LifeSci
Gas-
Combus
Auto-
Water
SpecFld
Custom
Ending



Medium pressure governor realizing compactness/large flow rate with a unique structural design.

Medium pressure governor **C25N-B Series**

- City gas/natural gas/LPG
- Port size: Inlet side 25A (JIS flange), outlet side 40A (JIS flange) **RoHS**

Features

- Compact and provides stable secondary pressure over a wide flow rate range
- Adopts a double diaphragm structure with an eye to safety
- Innovative design

When placing an order

Medium pressure governor is shipped with the primary pressure/secondary pressure/flow rate adjusted. When ordering, fill in a separate medium pressure gas safety cutoff control system specifications check sheet (page 966).

How to order differs depending on the specifications.

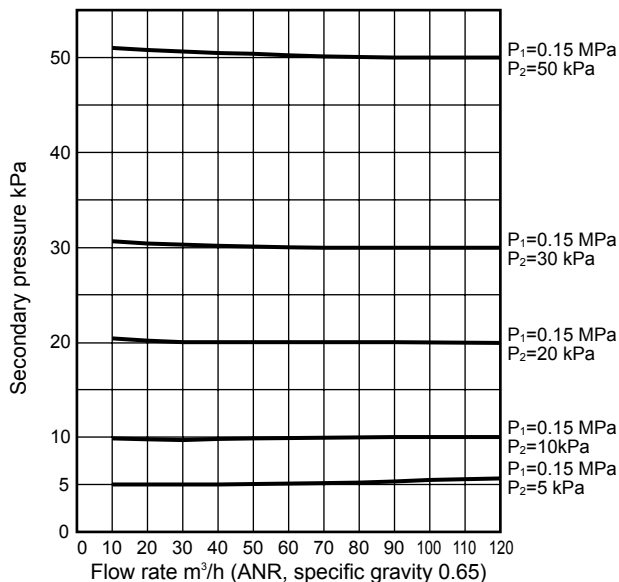
Specifications

1 MPa = 10 bar

Descriptions		C25N-B	
Working fluid		City gas/natural gas/LPG	
Working pressure	MPa	0.1 (≈15 psi) to 0.2 (≈29 psi)	0.1 (≈15 psi) to 0.3 (≈44 psi)
Secondary pressure	kPa	1.5 (≈0.22 psi) to 5 (≈0.7 psi)	5 (≈0.8 psi) to 60 (≈8.7 psi)
Secondary pressure fluctuation range		Within 20	
Flow rate	Specific gravity of natural gas 0.65 m ³ /h(ANR)	2 to 40	10 to 120
Ambient temperature		°C -20 (-4°F) to +60 (140°F) (no freezing)	
Mounting orientation		Unrestricted	
Connection		Flange (JIS10KRF)	
Port size	Inlet side	25A	
	Outlet side	40A	
Weight	kg	7.5	

* The secondary pressure range shows the range that can be set by changing the control spring.

Flow characteristics



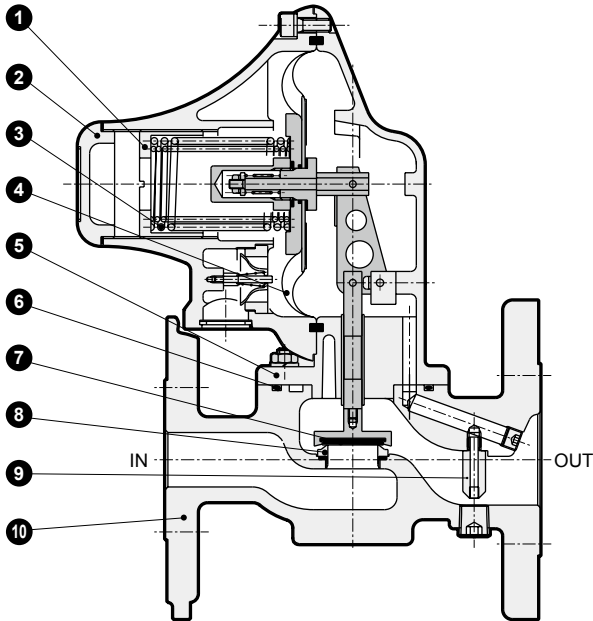
Reference: conversion coefficient

Converted flow rate = (flow rate in table) x (coefficient)

Gas type	Natural gas (13A)	City gas (6B.6C)	Propane	Butane	Butane-air (6A)
Specific gravity (air = 1)	0.65	0.54	1.6	2.0	1.25
Coefficient	1.0	1.09	0.63	0.57	0.72

⚠ Do not open and close the cutoff valve on the downstream side of C25N-B.

Internal structure and parts list

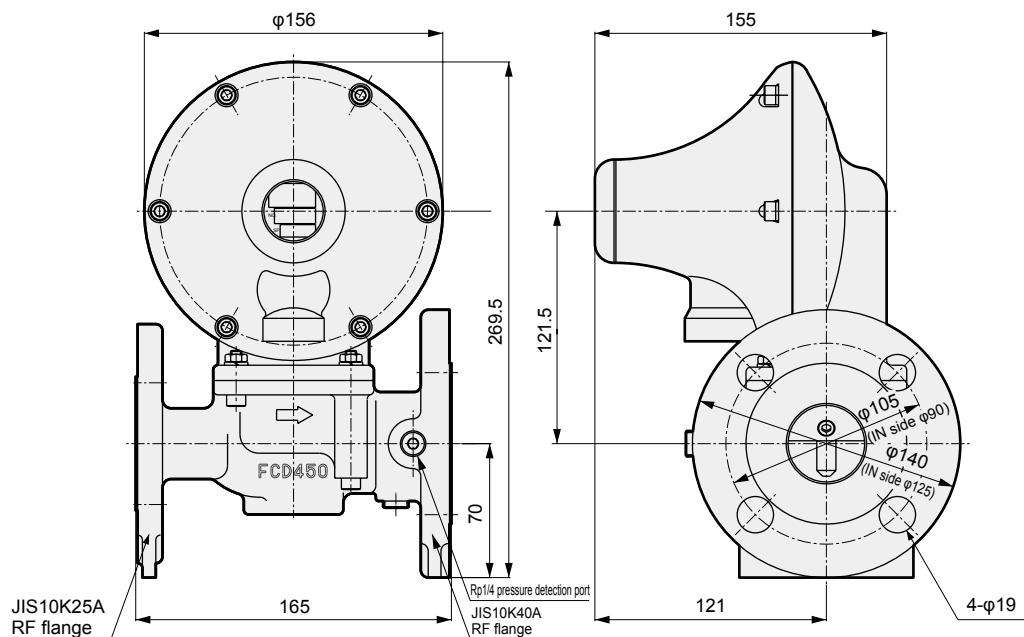


Cannot be disassembled

No.	Part name	Material
1	Adjusting nut	Copper alloy
2	Upper cap	Zinc die-casting
3	Pressure control spring	Piano wire (stainless steel wire)
4	Diaphragm	Nitrile rubber containing ground fabric
5	Case	Aluminum die-casting
6	O-ring	Nitrile rubber
7	Valve	Fluoro rubber
8	Orifice	Copper alloy
9	Booster pipe	Copper alloy
10	Body	Ductile cast iron

Dimensions

● C25N-B



EXA
FWD
HNB/G
USB/G
FAB/G
FGB/G
FVB
FWB/G
FHB
FLB
AB
AG
AP/
AD
APK/
ADK
DryAir
EX-
XPLNprf
XPLNprf
HVB/
HVL
S◇B/
NAB
LAD/
NAD
Water-
Rela
NP/NAP/
NVP
SNP
CHB/G
MXB/G
Other
valves
SWD/
MWD
DustColl
CVE/
CVSE
CCH /
CPE/D
LifeSci
Gas-
Combus
Auto-
Water
SpecFld
Custom
Ending