

Direct pressure automatic pinch valve

NPV2 Series

- Working fluid: Gas/water/sludge/powder
- Port size: 25 to 100 flange (JIS10K)



For various fluids including gas, water, sludge, powder, etc.

Specifications

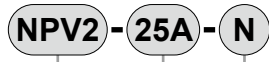
Descriptions	NPV2-25A-N	NPV2-40A-N	NPV2-50A-N	NPV2-65A-N	NPV2-80A-N	NPV2-100A-N
Working fluid	Gas/water/sludge/powder/non-corrosive fluids (refer to Intro Page 39 for details.)					
Connection	25 flange	40 flange	50 flange	65 flange	80 flange	100 flange
Bore size mm	25	40	50	65	80	98
Cv	35	90	150	250	390	627
Working pressure MPa	0.05 (≈7.3 psi, 0.5 bar) to 0.4 (≈58 psi, 4 bar)					
Proof pressure MPa	1.0 (≈150 psi, 10 bar)					
Operating pressure MPa	0.2 (≈29 psi, 2 bar) to 0.3 (≈44 psi, 3 bar) higher than working pressure					
Fluid temperature °C	5 (41°F) to 60 (140°F)					
Mounting orientation	Unrestricted					
Weight kg	4.6	5.9	7.1	9.7	11.8	16.8

- Completely closed structure, explosion-proof available
- Zero fluid resistance and no clogging
- Won't clog even with solids
- Vibration/noise absorption by using a rubber sleeve.
- Flange packing seal not required

*1 : Set the lowest operating pressure possible that does not cause leakage.

*2 : When the secondary side is open, be sure to fasten the sleeve using a companion flange.

How to order



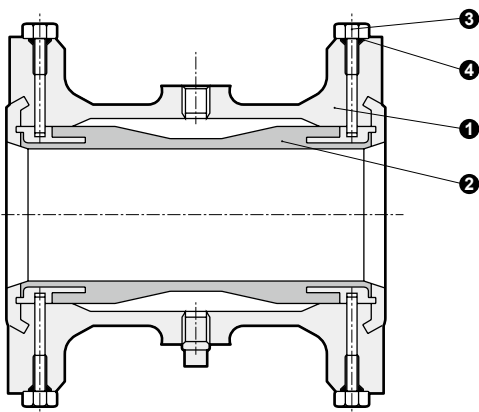
Model No.

Port size

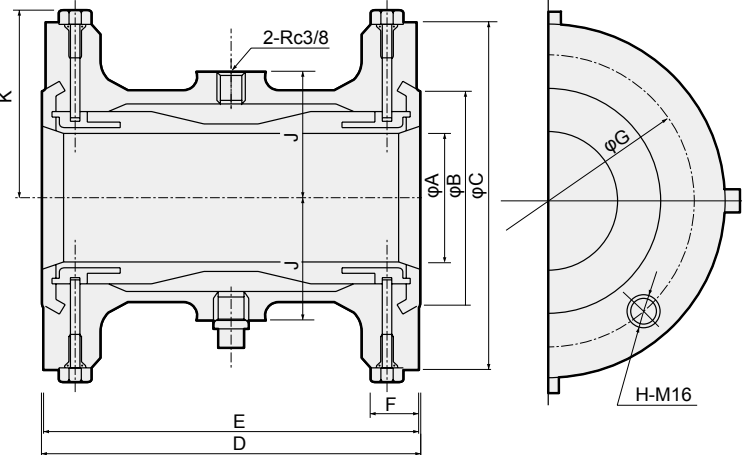
Rubber sleeve material

Code	Content
A Port size	
25A	25 flange
40A	40 flange
50A	50 flange
65A	65 flange
80A	80 flange
100A	100 flange
B Rubber sleeve material	
N	Chloroprene rubber

Internal structure and parts list



Dimensions



No.	Part name	Material
1	Body	FC250 Cast iron
2	Sleeve	CR Chloroprene rubber
3	Bolt	SUS304 Stainless steel
4	O-ring	NBR Nitrile rubber

Model No.	A	B	C	D	E	F	G	H	J	K
NPV2-25A	25	63	125	161	160	18	90	4	43	66
NPV2-40A	40	75	140	161	160	20	105	4	49	75
NPV2-50A	50	90	155	171	170	20	120	4	55	82
NPV2-65A	65	109	175	186.5	185	22	140	4	63	94
NPV2-80A	80	121	185	231.5	230	22	150	8	78	97
NPV2-100A	98	147	210	286.5	285	24	175	8	89	111