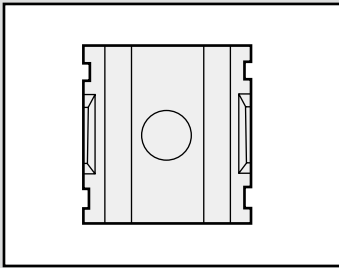
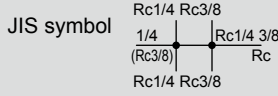


D101/D401/D801/D300-W Series



Compatible with pipe branching.

● Port size: 1/8 to 1



Specifications

Descriptions	D101-00-W	D401-00-W	D801-00-W	D300-W
Working fluid	Compressed air			
Max. working pressure MPa	1.0 (≈150 psi, 10 bar)			
Proof pressure MPa	1.5 (≈220 psi, 15 bar)			
Number of branching ports	1			4
Port size Rc,NPT,G	1/8, 1/4	1/4, 3/8, 1/2	3/4, 1	1/4, 3/8
Operating ambient temperature °C	5 (41°F) to 60 (140°F)			
Weight (excluding joiner) kg	0.045	0.13	0.35	0.26

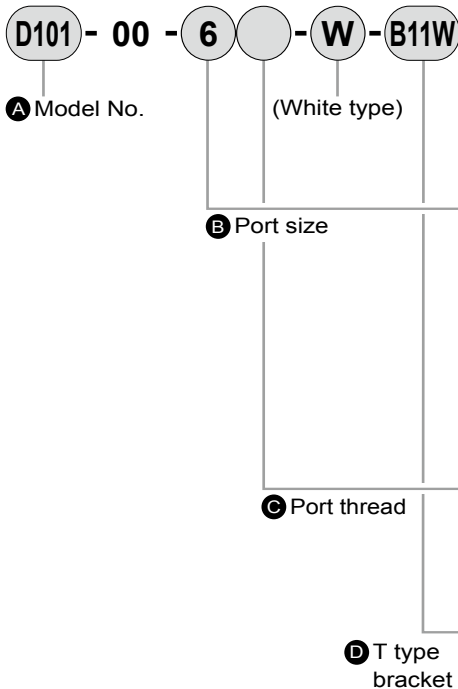
Option weight

* Add to the weight of the standard accessories. Unit: kg

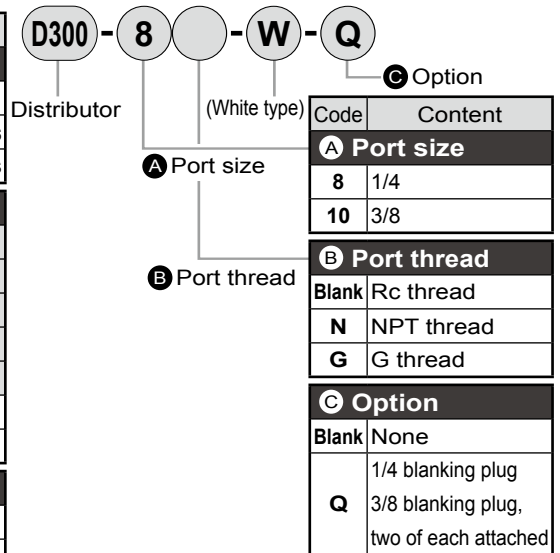
Code	T type bracket				
	Blank	B11W	B31W	B41W	B81W
D101	0.011	0.024			
D401	0.036		0.086	0.094	
D801	0.094				0.17

Joiner weight is included when blank.

How to order



Code	Content		
A Model No.			
D101	For 1000 Series		
D401	For 2000, 3000, 4000 Series		
D801	For 6000, 8000 Series		
B Port size			
	D101	D401	D801
6	1/8	●	
8	1/4	●	●
10	3/8		●
15	1/2		●
20	3/4		●
25	1		●
C Port thread			
Blank	Rc thread		
N	NPT thread		
G	G thread		
D T type bracket			
Blank	None	●	●
B11W	For 1000 Ser	●	
B31W	For 2000 Series		●
B41W	For 4000 Ser		●
B81W	For 6000 Series		●



Precautions for model No. selection

- *1: The joiner set (joiner, bolt, O-ring) and one gasket are enclosed as standard.
- *2: Contact CKD regarding 2-way branch.
- *3: D401-W can be connected to both 3000-W Series and 4000-W Series.

Precautions for model No. selection

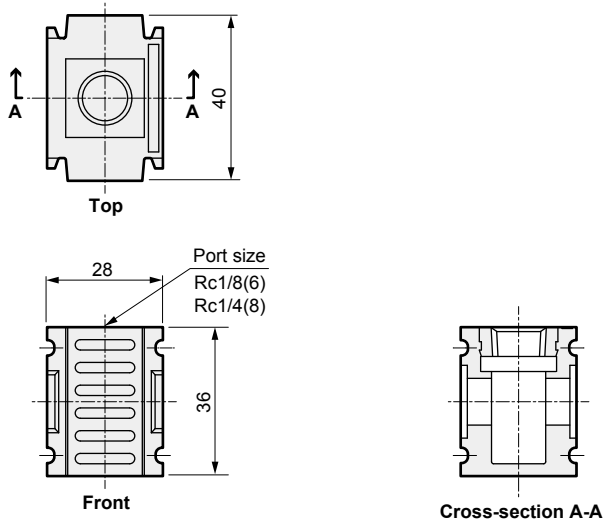
- *1: When using with C3000-W, C4000-W, the joiner set C4000-J400-W or T type bracket set B310-W/B410-W shall be connected.
- *2: The joiner set C4000-J400-W or T type bracket set should be ordered separately. (Refer to page 270)

Dimensions



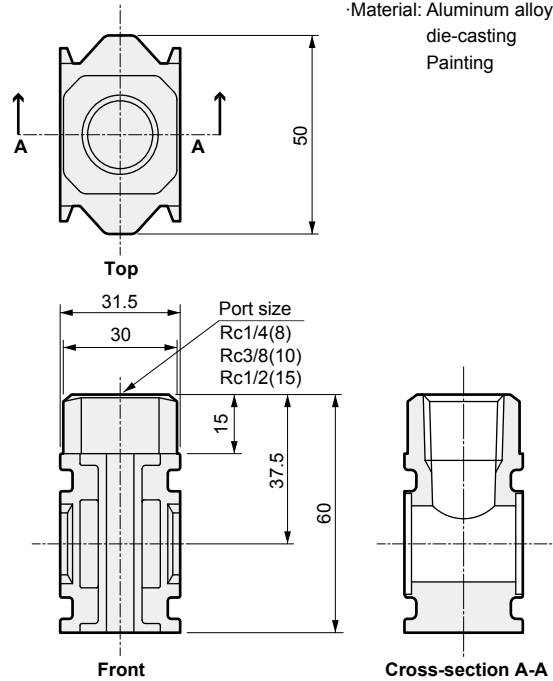
● D101-00-W

· Material: Polyamide resin



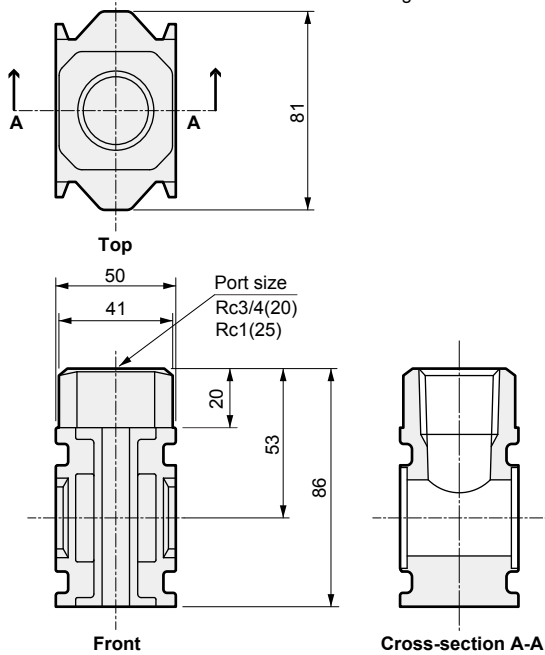
● D401-00-W

· Material: Aluminum alloy die-casting Painting



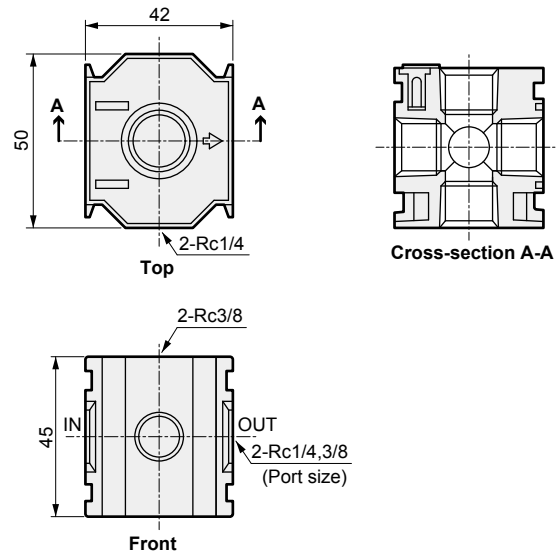
● D801-00-W

· Material: Aluminum alloy die-casting Painting

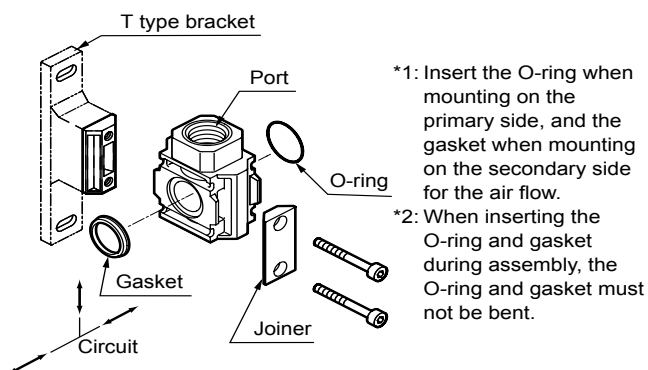


● D300-W

· Material: Aluminum alloy die-casting Painting



Assembly method (D101-00-W, D401-00-W, D801-00-W)



Usage example (D101-00-W, D401-00-W, D801-00-W)



F.R.L
F (Filtr)
R (Reg)
L (Lub)
PresSW
Shutoff
SlowStart
FmResistFR
Oil-ProhR
MedPresFR
No Cu/ PTFE FRL
Outdrs FR
F.R.L (Related)
CompFRL
LgFRL
PrecsR
VacF/R
Clean FR
ElecPneuR
AirBoost
SpdContr
Silncr
CheckV/ other
Jnt/tube
AirUnt
PrecsCompn
Mech/ ElecPresSw
ContactSW
AirSens
PresSW Cool
AirFloSens/ Contr
WaterRtSens
TotAirSys (Total Air)
TotAirSys (Gamma)
RefrDry
DesicDry
HiPolymDry
MainFiltr
Dischrg etc
Ending