



Regulator/medium pressure

RM3000-W/RM4000-W Series

R3000-W/R4000-W Series medium pressure specifications

● Port size: 1/4 to 1/2

JIS symbol



Specifications

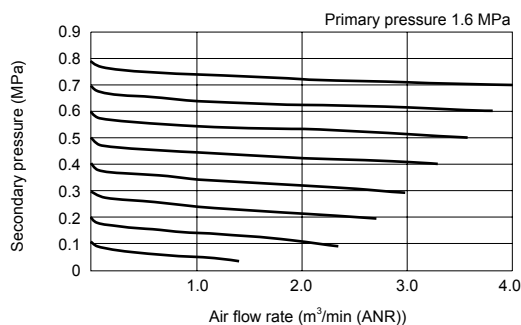
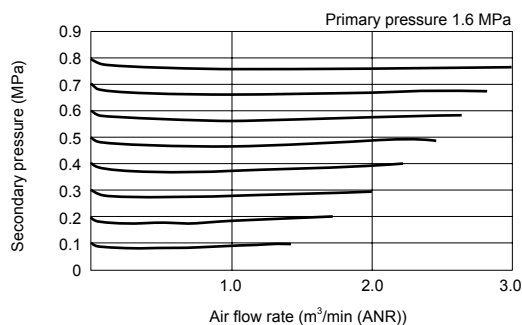
Descriptions	RM3000-W	RM4000-W
Working fluid	Compressed air	
Max. working pressure MPa	1.6 (≈230 psi, 16 bar)	
Proof pressure MPa	2.4 (≈350 psi, 24 bar)	
Ambient temperature °C	-5 (23°F) to 60 (140°F) (no freezing) *1	
Set pressure MPa	0.05 (≈7.3 psi, 0.5 bar) to 0.85 (≈120 psi, 8.5 bar)	
Pressure relief	With relief mechanism	
Port size Rc,NPT,G	1/4, 3/8 (1/2 uses an adaptor)	1/4, 3/8, 1/2 (3/4 uses an adaptor)
Weight g	0.45	0.7
Standard accessories	Pressure gauge, nut for panel mount	

*1: The ambient temperature of the pressure switch with indicator PPR assembly "RN" or "RP" is 5 to 50°C .

Flow characteristics

● RM3000-10-W

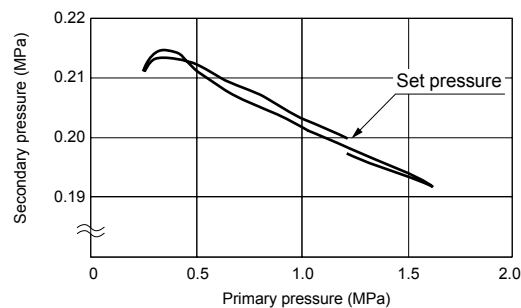
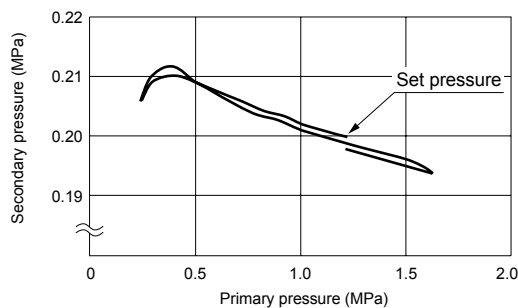
● RM4000-15-W



Pressure characteristics

● RM3000-W

● RM4000-W



Option weight

* Add to the weight of the standard accessories.

Unit: kg

Code	Pressure gauge		Pipe adaptor set				Attachment					
	T*	RN/RP	A8*W	A10*W	A15*W	A20*W	BW	B3W	G45P	G49P	G59P	G40P
RM3000	0	0.04	0.16	0.16	0.16		0.17	0.07	0.074	0.086	0.115	0.085
RM4000	0	0.04	0.16	0.16	0.16	0.16	0.21	0.11	0.074	0.086	0.115	0.085

How to order

RM3000 - **8** - **W** - **N** - **A8W**

A Model No.

(White type)

G Other attachments

* Refer to page 28 for the explanation of the option.

B Port size

C Port thread

D Option

E Display unit
*9

F Pipe adaptor set (attachments)

⚠ Precautions for model No. selection

- *1 : G and NPT threads are available for IN, OUT and gauge ports.
- *2 : When selecting options for several items, list options in order from the top.
- *3 : For "T", a gauge plug is assembled instead of a pressure gauge.
- *4 : The joiner set is enclosed with the pipe adaptor set.
- *5 : The pipe adaptor set A*00-**-W (refer to page 270 for related products) is enclosed.
- *6 : Refer to the related products for details on the attachments.
The pipe adaptor set and C type bracket cannot be used together.
- *7 : If NPT is selected for **C** Port thread, an NPT pressure gauge is supplied. If Rc or G thread is selected, an R thread pressure gauge is supplied.
- *8 : Refer to Safety precautions for the F.R.L. unit for details on mounting the L type bracket.
- *9 : Display unit options when selecting NPT threads: If Blank is selected, the pressure unit is psi and the temperature display unit is °F.
When G thread and Blank display unit option are selected, the pressure unit will be bar and the temperature display unit will be °C.
When NPT/G thread and "J1" display unit option are selected, the pressure unit will be MPa and the temperature display unit will be °C.

Code		Content		A Mod No.	
B Port size				RM3000	RM4000
8	1/4	●	●		
10	3/8	●	●		
15	1/2		●		
C Port thread					
					*1
Blank	Rc thread	●	●		
N	NPT thread	●	●		
G	G thread	●	●		
D Option					
					*2
Pressure relief	Blank	With relief mechanism	●	●	
	N	Non-relief	●	●	
Pressure gauge	Blank	With standard pressure gauge (G401)	●	●	
	T *3	No pressure gauge (gauge port 1/4 is assembled sealed)	●	●	
	T8	Pressure gauge ready (gauge port 1/4 is left open)	●	●	
	RN	Pressure switch with display PPR mounted (NPN output 1 point)	●	●	
	RP	Pressure switch with display PPR mounted (PNP output 1 point)	●	●	
Flow Direction	Blank	Standard flow (left → right)	●	●	
	X1	Reverse flow (right → left)	●	●	
E Display unit					
Blank	MPa display, Rc thread	●	●		
J1	MPa display, NPT/G thread	●	●		
F Pipe adaptor set (attachments)					*4, *5
Blank	Not attached	●	●		
A8*W	1/4 pipe adaptor set	●	●		
A10*W	3/8 pipe adaptor set	●	●		
A15*W	1/2 pipe adaptor set	●	●		
A20*W	3/4 pipe adaptor set		●		
* Adaptor thread					
Blank	Rc thread	●	●		
N	NPT thread	●	●		
G	G thread	●	●		
G Other attachments					*6, *7 Pages 267, 289
Blank	Not attached	●	●		
BW	C type bracket	●	●		
B3W	L type bracket		●	*8	
G45P	Pressure gauge: G45D-8-P10	●	●		
G49P	Pressure gauge: G49D-8-P10	●	●		
G59P	Pressure gauge: G59D-8-P10	●	●		
G40P	Pressure gauge: G40D-8-P10	●	●		

- The internal structure and parts list are common with R*-000-W. Refer to page 127.
- Refer to page 139 for optional parts drawings.

F.R.L
F (Filtr)
R (Reg)
L (Lub)
PresSW
Shutoff
SlowStart
FimResistFR
Oil-ProhR
MedPresFR
No Cu/PTFE FRL
Outdrs FR
F.R.L (Related)
CompFRL
LgFRL
PrecsR
VacF/R
Clean FR
ElecPneuR
AirBoost
SpdContr
Silncr
CheckV/other
Jnt/tube
AirUnt
PrecsCompn
Mech/ElecPresSw
ContactSW
AirSens
PresSW Cool
AirFloSens/Contr
WaterRtSens
TotAirSys (Total Air)
TotAirSys (Gamma)
RefrDry
DesicDry
HiPolymDry
MainFiltr
Dischrg etc
Ending

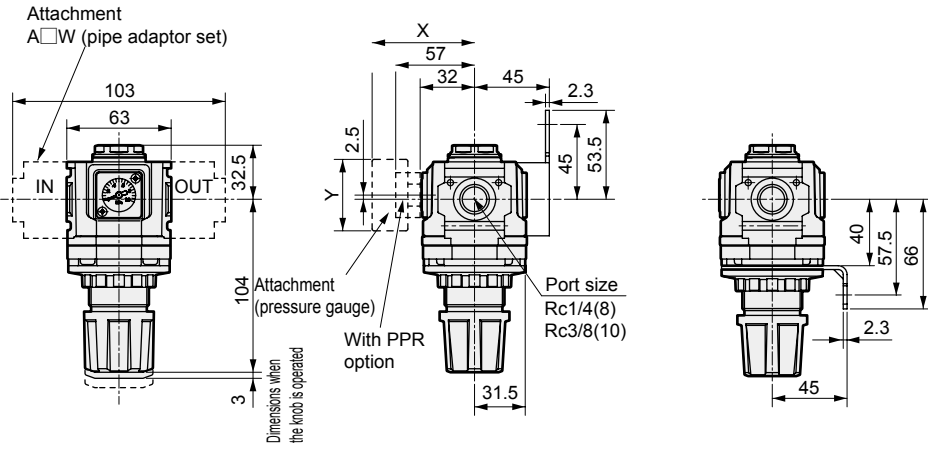
Regulator Series



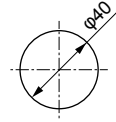
Dimensions

- F.R.L
- F (Filtr)
- R (Reg)
- L (Lub)
- PresSW
- Shutoff
- SlowStart
- FimResistFR
- Oil-ProhR
- MedPresFR
- No Cu/
PTFE FRL
- Outdrs FR
- F.R.L
(Related)
- CompFRL
- LgFRL
- PrecsR
- VacF/R
- Clean FR
- ElecPneuR
- AirBoost
- SpdContr
- Silncr
- CheckV/
other
- Jnt/tube
- AirUnt
- PresCompn
- Mech/
ElecPresSw
- ContactSW
- AirSens
- PresSW
Cool
- AirFloSens/
Contr
- WaterRtSens
- TotAirSys
(Total Air)
- TotAirSys
(Gamma)
- RefrDry
- DesicDry
- HiPolymDry
- MainFiltr
- Dischrg
etc
- Ending

● RM3000-W



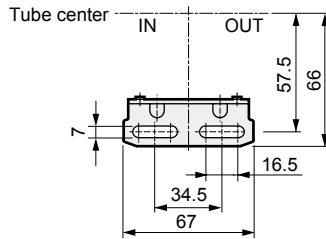
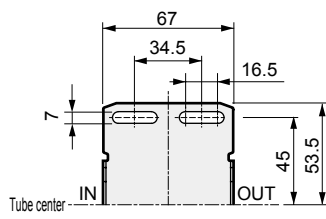
Panel cut dimension



Panel plate thickness: max. 7 mm

Attachment (C type bracket)
C type bracket (-BW)
Part model No.: B320
Material: Steel
Zinc plated

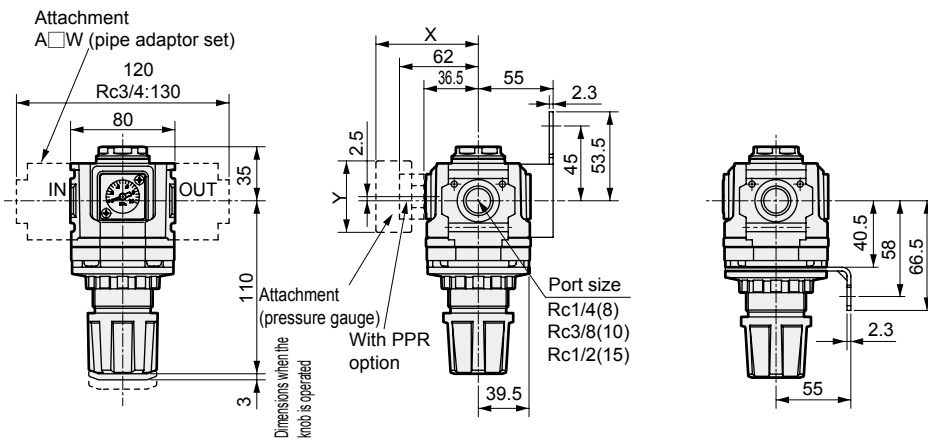
L type bracket (-B3W)
Part model No.: B330
Material: Steel
Zinc plated



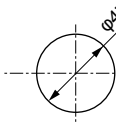
Pressure gauge attached optional dimensions table

Pressure gauge	X	Y
G45P	(70)	φ39
G49P	(69.5)	φ43.5
G59P	(72)	φ52
G40P	(71.5)	φ42.5

● RM4000-W



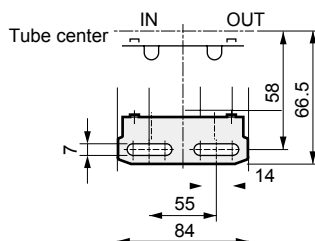
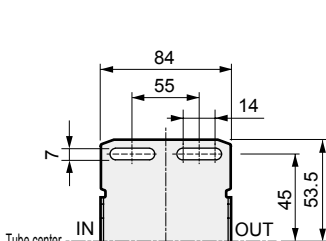
Panel cut dimension



Panel plate thickness: max. 7 mm

Attachment
C type bracket (-BW)
Part model No.: B420
Material: Steel
Zinc plated

L type bracket (-B3W)
Part model No.: B430
Material: Steel
Zinc plated



Pressure gauge attached optional dimensions table

Pressure gauge	X	Y
G45P	(75)	φ39
G49P	(74.5)	φ43.5
G59P	(77)	φ52
G40P	(76.5)	φ42.5