

Regulator: copper and PTFE-free

R1000/R2000/R3000 R4000/R6000/R8000 -W-P6 Series

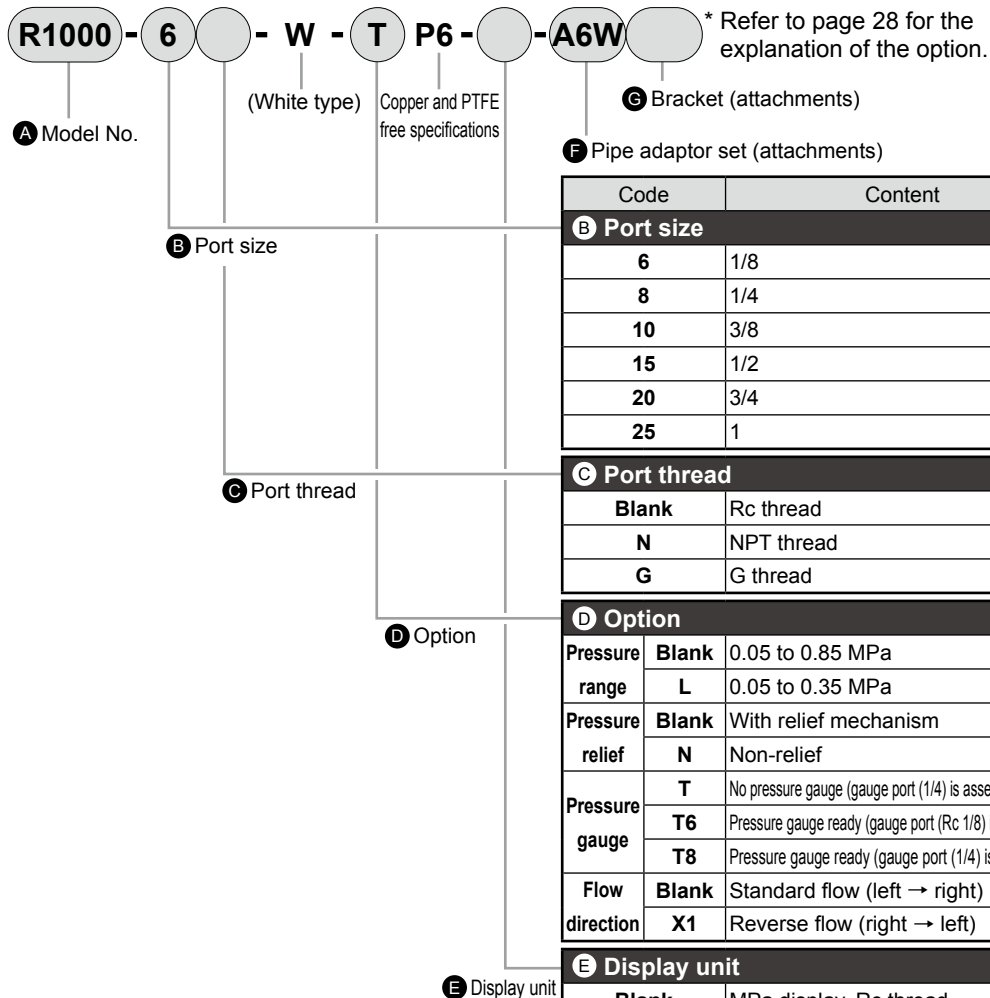
Copper ion prevention treatment

- Port size: 1/8 to 1

JIS symbol



How to order



Precautions for model No. selection

*1: Refer to pages 124 to 130 for specifications, dimensions and flow characteristics.

*2 : G threads and NPT threads are available for IN, OUT, and gauge ports.

*3 : Select any one of the options.

*4 : The pipe adaptor set and C type bracket cannot be used together.

*5 : The joiner set is enclosed with the pipe adaptor set.

*6 : The pressure gauge must be prepared separately.

T6:G49D-6-P10-P6(L:G49D-6-P04-P6)

T8:G59D-8-P10-P6(L:G59D-8-P04-P6)

A Model No.						
	R1000	R2000	R3000	R4000	R6000	R8000
	●					
	●	●	●	●		
		●	●	●		
				●		
					●	●
					●	●
*2						
	●	●	●	●	●	●
	●	●	●	●	●	●
	●	●	●	●	●	●
*3						
	●	●	●	●	●	●
	●	●	●	●	●	●
	●	●	●	●	●	●
	●	●	●	●	●	●
d)	●	●	●	●	●	●
6	●	●	●	●	●	●
6	●	●	●	●	●	●
	●	●	●	●	●	●
	●	●	●	●	●	●
	●	●	●	●	●	●
	●	●	●	●	●	●
Page 270 *4, *5						
	●	●	●	●	●	●
	●					
	●	●	●	●		
	●	●	●	●		
		●	●	●		
				●	●	●
						●
						●
	●	●	●	●	●	●
	●	●	●	●	●	●
	●	●	●	●	●	●
Page 267						
	●	●	●	●	●	●
	●	●	●	●	●	●
	●	●	●	●	●	
		●				

F.R.L
F (Filtr)
R (Reg)
L (Lub)
PresSW
Shutoff
SlowStart
FinResistFR
Oil-ProhrR
MedPresFR
No Cu/
PTFE FRL
Outdrs FR
F.R.L
(Related)
CompFRL
LgFRL
PrescR
VacFR/F
Clean FR
ElecPneuR
AirBoost
SpdContr
Silncr
CheckV/
Other
Jnt/tube
AirUnt
PresCompn
Mech/
ElecPresSw
ContactSW
AirSens
PresSW
Cool
AirFloSens/
Contr
WaterR/Sens
TotAirSys
(Total Air)
TotAirSys
(Gamma)
RefrDry
DesicDry
HiPolymDry
MainFiltr
Dischrg
etc
Endline



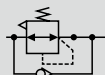
Reverse regulator: copper and PTFE-free

R1100/R2100/R3100 R4100/R6100/R8100-W-P6 Series

Copper ion prevention treatment

● Port size: 1/8 to 1

JIS symbol



How to order

R1100 - **6** - **W** - **T** **P6** - **A6** **G**

A Model No.

(White type)

Copper and PTFE free specifications

G Bracket (attachments)

F Pipe adaptor set (attachments)

* Refer to page 28 for the explanation of the option.

A Model No.

	R1100	R2100	R3100	R4100	R6100	R8100

Code	Content					
B Port size						
6	1/8	●				
8	1/4	●	●	●	●	
10	3/8		●	●		
15	1/2			●		
20	3/4				●	●
25	1				●	●

C Port thread						
Blank	Rc thread	●	●	●	●	●
N	NPT thread	●	●	●	●	●
G	G thread	●	●	●	●	●

D Option						
Pressure range	Blank	0.05 to 0.85 MPa	●	●	●	●
	L	0.05 to 0.35 MPa	●	●	●	●
Pressure relief	Blank	With relief mechanism	●	●	●	●
	N	Non-relief	●	●	●	●
Pressure gauge	T	No pressure gauge (gauge port (1/4) is assembled sealed)	●	●	●	●
	T6	Pressure gauge ready (gauge port (Rc 1/8) is left open) *7	●	●	●	●
	T8	Pressure gauge ready (gauge port (1/4) is left open) *7	●	●	●	●
Flow direction	Blank	Standard flow (left → right)	●	●	●	●
	X1	Reverse flow (right → left)	●	●	●	●

E Display unit						
Blank	MPa display, Rc thread	●	●	●	●	●
J1	MPa display, NPT, G thread	●	●	●	●	●

F Pipe adaptor set (attachments)						
Blank	Not attached	●	●	●	●	●
A6*W	1/8 pipe adaptor set	●				
A8*W	1/4 pipe adaptor set	●	●	●	●	
A10*W	3/8 pipe adaptor set	●	●	●	●	
A15*W	1/2 pipe adaptor set		●	●	●	
A20*W	3/4 pipe adaptor set				●	●
A25*W	1 pipe adaptor set					●
A32*W	1 1/4 pipe adaptor set					●

* Adaptor thread						
Blank	Rc thread	●	●	●	●	●
N	NPT thread	●	●	●	●	●
G	G thread	●	●	●	●	●

G Bracket (attachments)						
Blank	Not attached	●	●	●	●	●
BW	C type bracket	●	●	●	●	●
B3W	L type bracket	●	●	●	●	
B4W	B type bracket		●			

⚠ Precautions for model No. selection

*1 : Refer to pages 132 to 138 for specifications, dimensions and flow characteristics.

*2 : G and NPT threads are available for IN, OUT, and gauge ports.

*3 : Select any one of the options.

*4 : Positions of check valve and pressure gauge cannot be changed. If the IN and OUT directions must be reversed, indicate "X1" at the end of the option field.

*5 : The pipe adaptor set and C type bracket cannot be used together.

*6 : The joiner set is enclosed with the pipe adaptor set.

*7 : The pressure gauge must be prepared separately.

T6:G49D-6-P10-P6(L:G49D-6-P04-P6)

T8:G59D-8-P10-P6(L:G59D-8-P04-P6)