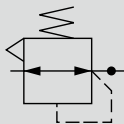




# Regulator 2619 Series

● Port size: Rc1/8, Rc1/4

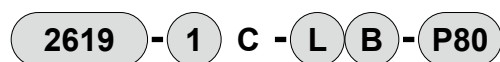
JIS symbol



## Specifications

Descriptions	2619-1C/2C-P80	2619-1C/2C-P90/P94
Working fluid	Compressed air	
Max. working pressure MPa	2.06 (≈300 psi, 20.6 bar)	1.0 (≈150 psi, 10 bar)
Proof pressure MPa	3.09 (≈450 psi, 30.9 bar)	1.5 (≈220 psi, 15 bar)
Ambient / fluid temperatures °C	5 (41°F) to 60 (140°F)	
Set pressure range MPa	0.04 (≈5.8 psi, 0.4 bar) to 0.83 (≈120 psi, 8.3 bar)	
Pressure relief	With relief mechanism	
Gauge port size Rc	1/8	
Port size Rc	1/8 / 1/4	1/8 / 1/4
Weight kg	0.27	0.42
Weight of attached product g	G:90,B:40	

## How to order



Model No.

A Port size

B Regulator

C Attached product

D Clean-room specifications  
\*2

Code	Content	
<b>A Port size</b>		
1	Rc1/8	
2	Rc1/4	
<b>B Regulator</b>		
Blank	Standard	
N	Without relief mechanism	
L	Low pressure (0.04 to 0.34 MPa)	
<b>C Attached product</b>		
Blank	None	
G	Pressure gauge	*1
B	Bracket	
<b>D Clean-room specifications</b>		
	Structure/treatment	Material limitations
P80	Oil free	-
P90	Stainless steel material used Oil free	-
P94	Stainless steel material used Oil-free treatment	Use of CU/Si/halogen-based material (e.g. fluorine/chlorine/bromine) not possible

## ⚠ Precautions for model No. selection

\*1: The clamp fitting and pipe plug are included.

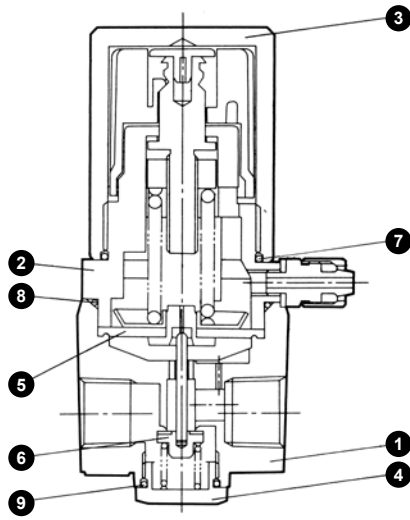
\*2: " P94 " is a custom order product.

\*1: The following pressure gauge is included:

Model	Standard pressure	"L": Low pressure option
2619-□-P80	G49D-6-P10-P94	G49D-6-P04-P94
2619-□-P90	G49D-6-P10-P90	G49D-6-P04-P90
2619-□-P94	G49D-6-P10-P94	G49D-6-P04-P94

Model No. of single bracket  
**2619-B-P80**

### Internal structure and parts list



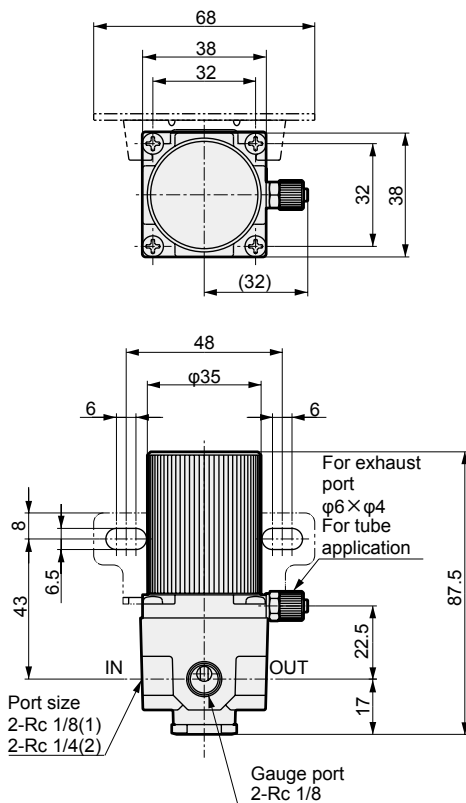
**Cannot be disassembled**

### Parts list

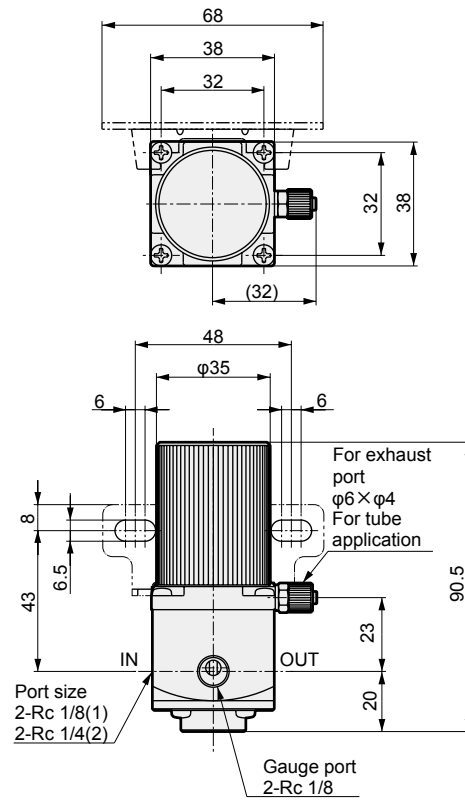
No.	Main part	Material (treatment)		
		2619-*-P80	2619-*-P90	2619-*-P94
1	Body	Aluminum alloy die casting (paint)	Stainless steel	Stainless steel
2	Bonnet	Zinc alloy die casting (paint)	Zinc alloy die casting (paint)	Zinc alloy die casting (paint)
3	Cap	Aluminum (alumite treatment)	Aluminum (alumite treatment)	Aluminum (alumite treatment)
4	Bottom plug	Aluminum (alumite treatment)	Stainless steel	Stainless steel
5	Diaphm Assy	Fluoro rubber/stainless steel	Fluoro rubber/stainless steel	Nitrile rubber/stainless steel
6	Valve assembly	Fluoro rubber/stainless steel	Fluoro rubber/stainless steel	Nitrile rubber/stainless steel
7	O-ring	Nitrile rubber	Nitrile rubber	Nitrile rubber
8	O-ring	Nitrile rubber	Nitrile rubber	Nitrile rubber
9	O-ring	Fluoro rubber	Fluoro rubber	Nitrile rubber

### Dimensions

#### ● 2619-P80



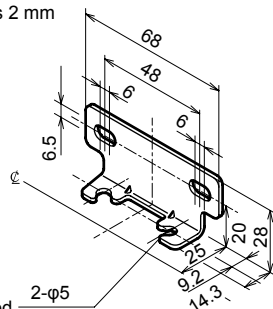
#### ● 2619-P90/P94



### Bracket dimensions

#### ● 2619-B-P80

Bracket thickness 2 mm



Material: Steel  
Nickel plated

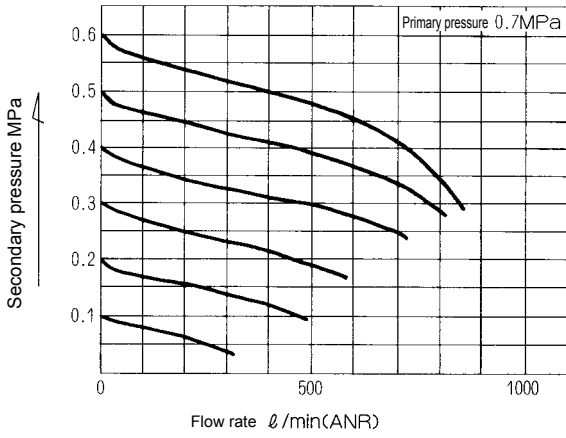
● Screw is included

F.R.L  
F (Filtr)  
R (Reg)  
L (Lub)  
PresSW  
Shutoff  
SlowStart  
FimResistFR  
Oil-ProhR  
MedPresFR  
No Cu/  
PTFE FRL  
Outdrs FR  
F.R.L  
(Related)  
CompFRL  
LgFRL  
PrecsR  
VacF/R  
Clean FR  
ElecPneuR  
AirBoost  
SpdContr  
Silncr  
CheckV/  
other  
Jnt/tube  
AirUnt  
PresCompn  
Mech/  
ElecPresSw  
ContactSW  
AirSens  
PresSW  
Cool  
AirFloSens/  
Contr  
WaterRtSens  
TotAirSys  
(Total Air)  
TotAirSys  
(Gamma)  
RefrDry  
DesicDry  
HiPolymDry  
MainFiltr  
Dischrg  
etc  
Ending

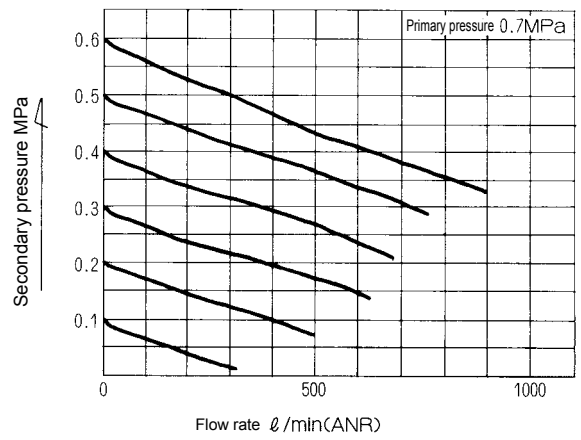
## F.R.L Flow characteristics

- F (Filtr)
- R (Reg)
- L (Lub)
- PresSW
- Shutoff
- SlowStart
- FimResistFR
- Oil-ProhR
- MedPresFR
- No Cu/PTFE FRL
- Outdrs FR
- F.R.L (Related)
- CompFRL
- LgFRL
- PrecsR
- VacF/R
- Clean FR
- ElecPneuR
- AirBoost
- SpdContr
- Silncr
- CheckV/other
- Jnt/tube
- AirUnt
- PrecsCompn
- Mech/ElecPresSw
- ContactSW
- AirSens
- PresSW Cool
- AirFloSens/Contr
- WaterRtSens
- TotAirSys (Total Air)
- TotAirSys (Gamma)
- RefrDry
- DesicDry
- HiPolymDry
- MainFiltr
- Dischrg etc
- Ending

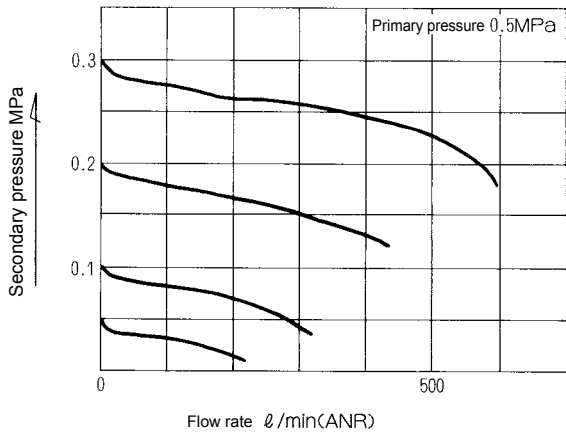
● 2619-1C-P80/P90/P94



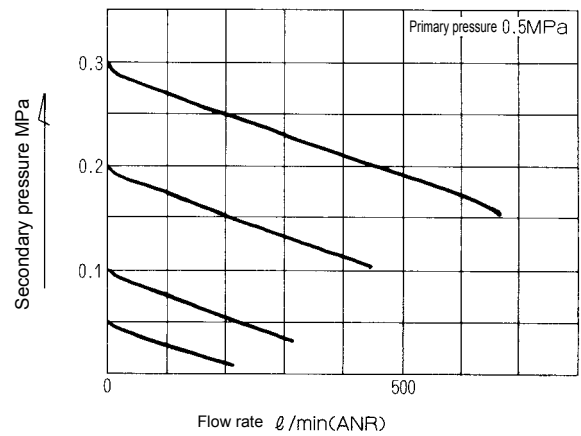
● 2619-2C-P80/P90/P94



● 2619-1C-L-P80/P90/P94



● 2619-2C-L-P80/P90/P94



## Pressure characteristics

● 2619-\*-P80/P90/P94

