

Reverse regulator (check valve integrated)

2419 Series

Smooth discharge of secondary pressure with check valve.
No bypass circuit required and easy piping.

● Port size: Rc1/8 to Rc1/4

JIS symbol



Specifications

1 MPa = 10 bar

Descriptions		2419-1C/2C
Working fluid		Compressed air
Max. working pressure	MPa	1.0 (≈150 psi, 10 bar)
Proof pressure	MPa	1.5 (≈220 psi, 15 bar)
Ambient / fluid temperatures	°C	5 (41°F) to 65 (149°F)
Set pressure	MPa	0.04 (≈5.8 psi) to 0.83 (≈120 psi)
Pressure relief		With relief mechanism
Port size	Rc	1/8 / 1/4
Weight	kg	0.2

*1: Refer to the following graph for the set pressure range for back pressure.

*2: Pressure gauge for "LG" is 0 to 0.4 MPa.

Option weight

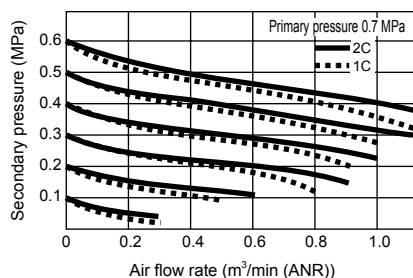
* Add to the weight of the standard accessories.

Unit: kg

	Panel mount	Pressure gauge	Bracket
Code	P	G	B
2419	0	0.086	0.035

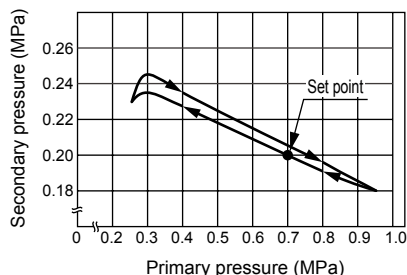
Flow characteristics

● 2419-1C/2C Rc1/8 / 1/4



Pressure characteristics

● 2419

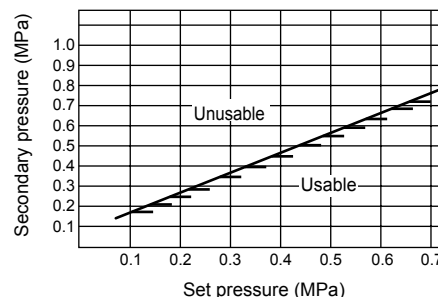


Note on model No. selection

Always refer to the following graph for the set pressure range for back pressure.

For example, if the set pressure is 0.3 MPa and the secondary side back pressure exceeds 0.35 MPa, the secondary side pressure is not released to the primary side.

● Set pressure range to back pressure



How to order

2419 - 1C - NLGB

Model No. **A** Port size

[Example of model No.] *1

2419-1C-NLGB

Model: Reverse regulator
(check valve integrated)

A Port size: Rc 1/8

B Option: Non-relief,
low pressure, pressure
gauge included,
bracket included

B Option

*2

*3

*4

*5

⚠ Precautions for model No. selection

*1 : If port size NPT thread is required, do not indicate nominal size C. (Example) 2419-1

If a pressure gauge is selected, the NPT thread pressure gauge is enclosed.

*2 : Options can be combined.

*3 : If option codes "B" and "G" are indicated, a pressure gauge and a bracket are enclosed.

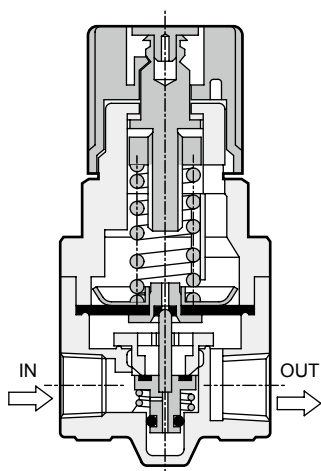
The pressure gauge supplied is G49D-6-P10 (G49D-6-P04 for low pressure). Refer to related products (page 289) for pressure gauge specifications.

*4 : Contact CKD when assembly products are required.

*5 : If option B (bracket) is selected, a 6506 bracket is enclosed, while if PB (bracket for panel mount) is selected, a 6166 bracket is enclosed. Refer to page 347 for the attached product "B" bracket.

Code	Content	
A Port size		
1C	Rc1/8	
2C	Rc1/4	
B Option		
Regulator	Blank	Standard
	N	Non-relief
	L	Low pressure (0.02 to 0.34 MPa)
	P	Panel mount
Attached product	Blank	Not attached
	G	Pressure gauge
	B	Bracket

Internal structure

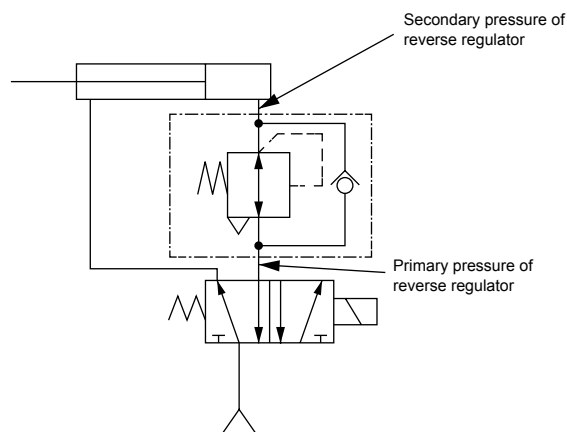


Non-balanced type

Applications

● Circuit diagram

When cylinder head side and rod side pressures differ



Functions

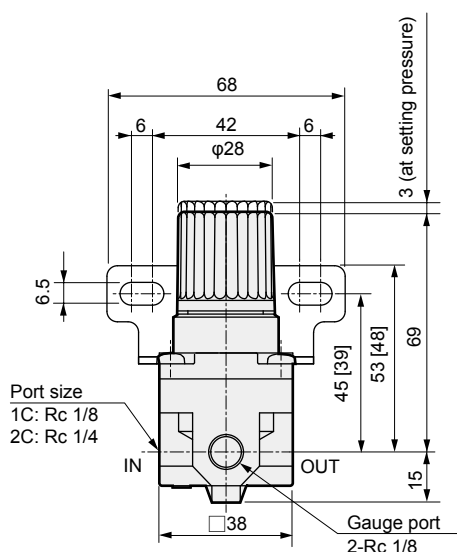
2419 (non-balanced type)

Since the primary pressure is received under the main valve (valve assembly), if the primary pressure is discharged, the main valve is no longer held by the primary pressure and opens. This enables reverse use.

Dimensions

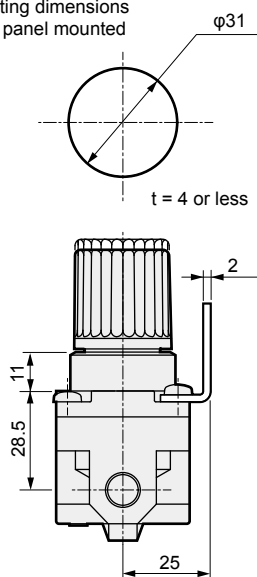


● 2419



Dimensions shown in [] are for PB (bracket for panel mount)

Mounting dimensions
when panel mounted

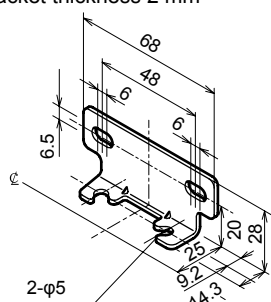


● Wall bracket: 6506

·Material: Steel

Zinc plated

Bracket thickness 2 mm



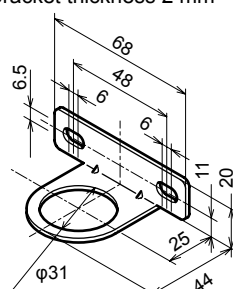
* Tapping screw attached

● Wall bracket: 6166

·Material: Steel

Zinc plated

Bracket thickness 2 mm



F.R.L
F (Filtr)
R (Reg)
L (Lub)
PresSW
Shutoff
SlowStart
FimResistFR
Oil-ProhR
MedPresFR
No Cu/ PTFE FRL
Outdrs FR
F.R.L (Related)
CompFRL
LgFRL
PrecsR
VacF/R
Clean FR
ElecPneuR
AirBoost
SpdContr
Silncr
CheckV/ other
Jnt/tube
AirUnt
PrecsCompn
Mech/ ElecPresSw
ContactSW
AirSens
PresSW Cool
AirFloSens/ Contr
WaterRtSens
TotAirSys (Total Air)
TotAirSys (Gamma)
RefrDry
DesicDry
HiPolymDry
MainFiltr
Dischrg etc
Ending