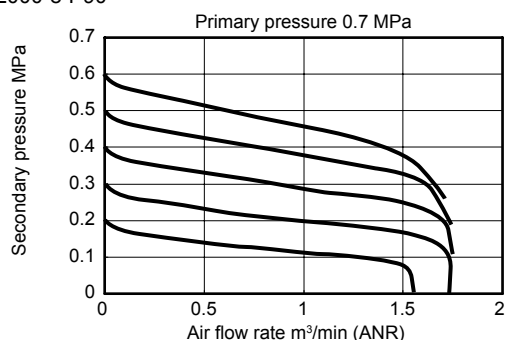
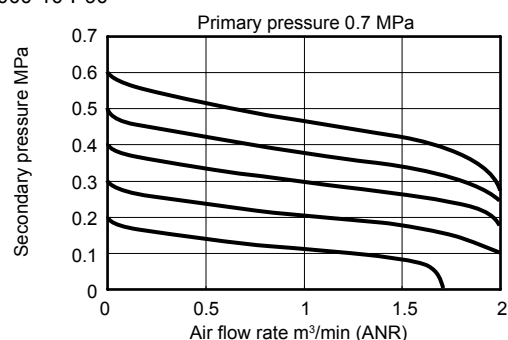


Flow characteristics

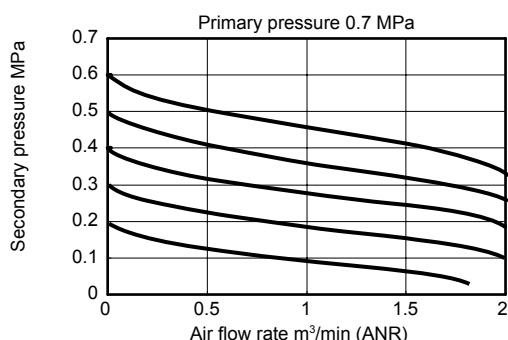
● RC2000-8-P90



● RC2000-10-P90

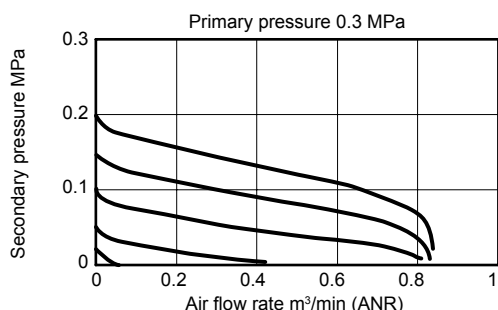


● RC2000-15-P90

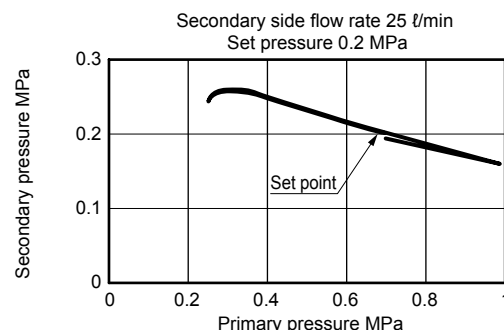


Flow characteristics (low pressure)

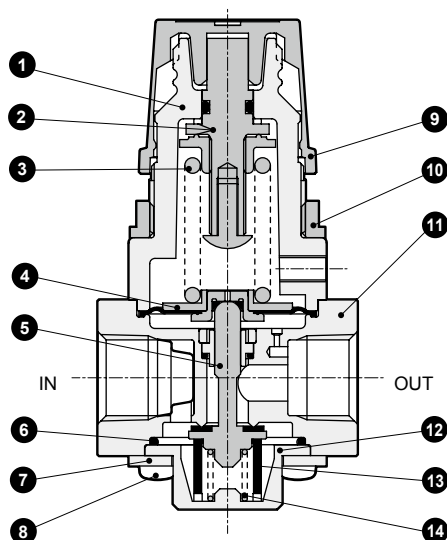
● RC2000-*-L-P90



Pressure characteristics



Internal structure and parts list



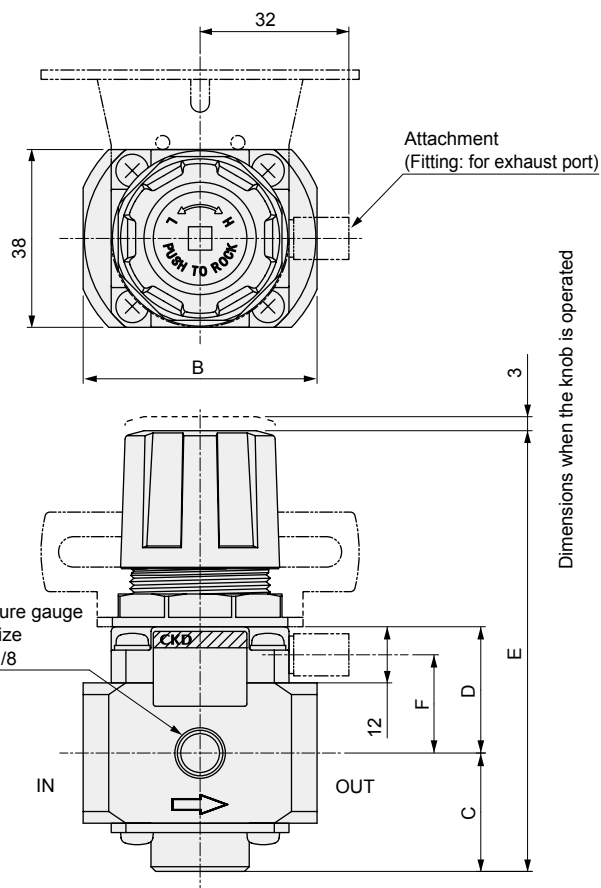
No.	Part name	Material (treatment)
1	Cover	PA66
2	Pressure adjusting screw assembly	Steel, SUS, FKM, POM
3	Spring	Steel
4	Diaphragm	SUS316, FKM, SUS303
5	Valve	SUS316, FKM
6	O-ring	FKM
7	Plate	SUS304
8	Thread	Steel (nickel plating)
9	Knob	POM
10	Mounting nut	Zinc die-casting (nickel plating)
11	Body	SUS316, FKM, PTFE
12	Bottom cap	SUS316
13	Bottom rubber	FKM
14	Spring	SUS316

* A mesh filter is installed on IN sides of RC2000-8-P90 and RC2000-10-P90.

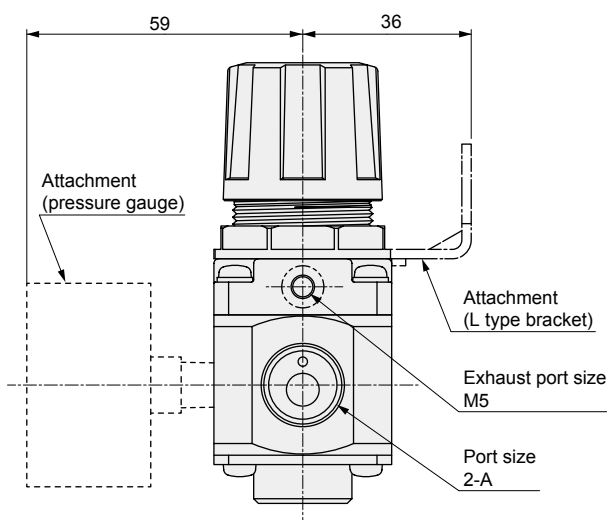
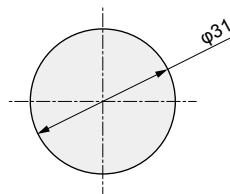
Cannot be disassembled

RC2000 Series

Dimensions



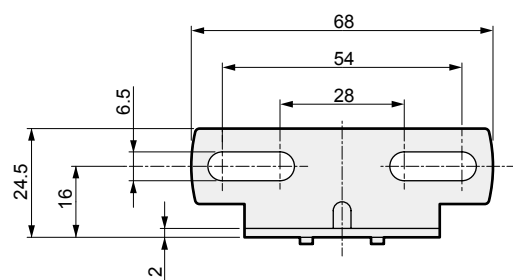
Panel cut dimension
Panel plate thickness: max. 4 mm



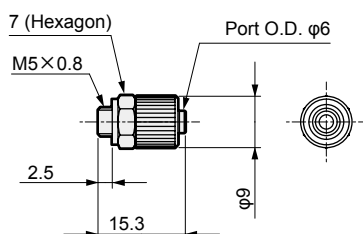
Model No.	A	B	C	D	E	F
RC2000-8	Rc1/4	50	25.5	27	95	21
RC2000-10	Rc3/8					
RC2000-15	Rc1/2	58	27.5	29	99	23

Attachment

- L type bracket (-B3)
Part model No.: RC2000-B3
· Material: Steel
Nickel plating treatment



- Fitting (-E1)
Part model No.: RC2000-E1



Model No.	RC2000-E1
Working fluid	Compressed air, N ₂
Fluid temperature °C	5 to 60
Ambient temperature °C	5 to 60
Tube used	Urethane tube
Part material	Material (treatment)
Metal parts	Copper alloy (nickel plating)
Rubber parts	NBR

Custom product

Available as a custom product. Contact CKD for details.

RC Large flow rate and large bore size

- Flow rate: 3000 ℓ/min(ANR) *1
- Port size : Rc3/4, Rc1

*1 Flow rate at 0.7 MPa primary pressure, 0.5 MPa set pressure and 0.1 MPa pressure drop.



F.R.L
F (Filtr)
R (Reg)
L (Lub)
PresSW
Shutoff
SlowStart
FmResistFR
Oil-ProhR
MedPresFR
No Cu/ PTFE FRL
Outdrs FR
F.R.L (Related)
CompFRL
LgFRL
PrecsR
VacF/R
Clean FR
ElecPneuR
AirBoost
SpdContr
Silncr
CheckV/ other
Jnt/tube
AirUnt
PrecsCompn
Mech/ ElecPresSw
ContactSW
AirSens
PresSW Cool
AirFloSens/ Contr
WaterRtSens
TotAirSys (Total Air)
TotAirSys (Gamma)
RefrDry
DesicDry
HiPolymDry
MainFiltr
Dischrg etc
Ending