



Pressure gauge with safety mark

G40D Series

Easy visual inspection control due to green and red zone display.

● Port size: R1/8, R1/4

JIS symbol



Specifications

1 MPa = 10 bar

| Descriptions | G40D | |
|---------------------------------|----------------------------------|----------------------------------|
| | P10 | P04 |
| Working fluid | Compressed air | |
| Full scale MPa | 1.0 (≈150 psi, 10 bar) | 0.4 (≈58 psi, 4 bar) |
| Safety marker setting range MPa | 0.15 (≈22 psi) to 1.0 (≈150 psi) | 0.06 (≈8.7 psi) to 0.4 (≈58 psi) |
| Max. setting width MPa | 0.45 (≈65 psi, 4.5 bar) | 0.18 (≈26 psi, 1.8 bar) |
| Ambient temperature °C | 5 (41°F) to 60 (140°F) | |
| Fluid temperature °C | 5 (41°F) to 60 (140°F) | |
| Port size R | 1/8, 1/4 | |
| Accuracy *1 | Full scale ±3% | |
| Weight g | 85 | |

*1: The guaranteed indicator accuracy temperature is 20±15°C.

Specifications for rechargeable battery

(Catalog No. CC-1226A)

● Design compatible with rechargeable battery manufacturing process

G40D.....- **P4**

How to order

G40D - **8** - **P10**

A Model No.

B Port size

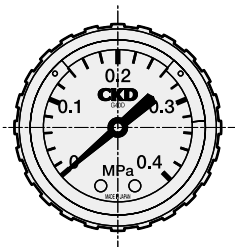
C Pressure display

| Code | Content |
|---------------------------|---------------------------------|
| A Model No. | |
| G40D | Pressure gauge with safety mark |
| B Port size | |
| 6 | R1/8 |
| 8 | R1/4 |
| C Pressure display | |
| P10 | For 0 to 1.0 MPa |
| P04 | For 0 to 0.4 MPa |

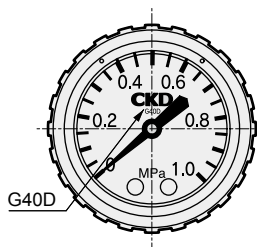
⚠ Precautions for model No. selection

* Designate R1/4 when mounting on Rotary actuator F.R.L. Series.

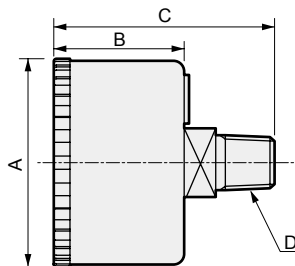
Dimensions and materials



Pressure display: P04

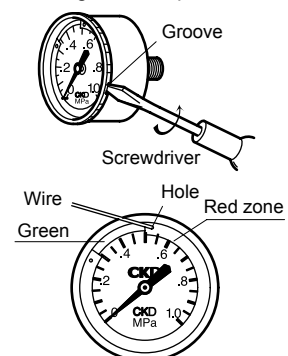


Pressure display: P10



How to adjust pressure range

When removing the transparent face



| Part name | Material |
|--------------------|---------------------|
| Bourdon tube/stock | Copper alloy |
| Housing | Steel plate + paint |
| Lens | Polyamide resin |
| Marker | PBT resin |

| Model No. | A | B | C | D |
|-----------|-------|------|----|------|
| G40D-6 | φ42.5 | 26.5 | 44 | R1/8 |
| G40D-8 | | | 46 | R1/4 |

Remove the transparent face and insert a needle into the hole in the red zone to move the red zone marker.

After adjustment, always reattach the transparent face before supplying pneumatic pressure.

F.R.L
F (Filtr)
R (Reg)
L (Lub)
PresSW
Shutoff
SlowStart
FimResistFR
Oil-ProhR
MedPresFR
No Cu/
PTFE FRL
Outdrs FR
F.R.L
(Related)
CompFRL
LgFRL
PrecsR
VacF/R
Clean FR
ElecPneuR
AirBoost
SpdContr
Silncr
CheckV/
other
Jnt/tube
AirUnt
PresCompn
Mech/
ElecPresSw
ContactSW
AirSens
PresSW
Cool
AirFloSens/
Contr
WaterRISens
TotAirSys
(Total Air)
TotAirSys
(Gamma)
RefrDry
DesicDry
HiPolymDry
MainFiltr
Dischrg
etc
Ending