



General-use pressure gauge G49D/G59D Series

● Port size: R1/8, R1/4

JIS symbol



Specifications

Descriptions	G49D	G59D
Working fluid	Liquid or gas (non-corrosive)	
Fluid temperature °C	5 (41°F) to 60 (140°F)	
Ambient temperature °C	5 (41°F) to 60 (140°F)	
Accuracy *1	Full scale ±3%	
Shape	DT type (rear side screw, stock section square)	
Display size	φ42	φ52
Material	Stock/Bourdon tube	Copper alloy *2
	Housing	Steel plate + chrome plating
	Lens	Glass
Pressure range MPa	0 (≈0 psi, 0 bar) to 0.2 (≈29 psi, 2 bar) 0 (≈0 psi, 0 bar) to 0.4 (≈58 psi, 4 bar) 0 (≈0 psi, 0 bar) to 1.0 (≈150 psi, 10 bar) 0 (≈0 psi, 0 bar) to 2.0 (≈290 psi, 20 bar)	
Port size R	1/8, 1/4	
Weight g	86	115

*1: The guaranteed indicator accuracy temperature is 20±15°C.

*2: The material of the Bourdon tube is phosphor bronze only for pressure indication "P20."

Clean-room specifications (Catalog No. CB-033SA)

● Anti-dust generation structure for use in cleanrooms

G49D-.....- P9*

G59D-.....- P9*

Copper and PTFE free specifications (Page 246)

G49D-.....- P6

G59D-.....- P6

Specifications for rechargeable battery

(Catalog No. CC-1226A)

● Design compatible with rechargeable battery manufacturing process

G49D-.....- P4

G59D-.....- P4

How to order

G49D - 6 - P02

A Model No.

B Port size

C Pressure display

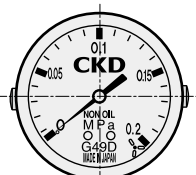
Code	Content
A Model No.	
G49D	
G59D	
B Port size *2	
6	R 1/8
8	R 1/4
C Pressure display [MPa] *1	
P02	0 to 0.2
P04	0 to 0.4
P10	0 to 1.0
P20	0 to 2.0

⚠ Precautions for model No. selection

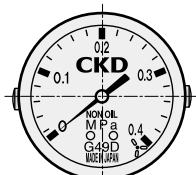
*1: Displays other than an MPa display are custom order.

*2: NPT screws are available as custom order.

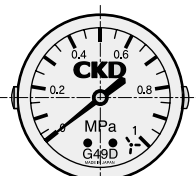
Dimensions



Pressure display: P02



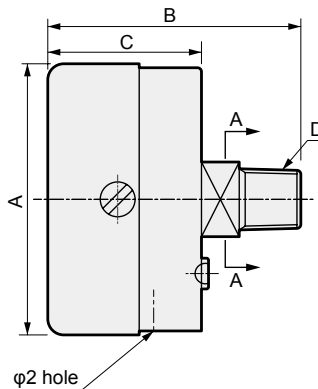
Pressure display: P04



Pressure display: P10



Pressure display: P20



Cross section A-A

Model No.	A	B	C	D	E
G49D-6	φ43.5	40.5	24.5	R 1/8	12
G49D-8	φ43.5	44	24.5	R 1/4	14
G59D-6	φ52	44.5	28	R 1/8	14
G59D-8	φ52	46.5	28	R 1/4	14
G49D-6-P6	φ42.8	43.5	27.5	R 1/8	12
G59D-8-P6	φ52	50.5	26.5	R 1/4	14

F.R.L
F (Filtr)
R (Reg)
L (Lub)
PresSW
Shutoff
SlowStart
FimResistFR
Oil-ProhR
MedPresFR
No Cu/
PTFE FRL
Outdrs FR
F.R.L
(Related)
CompFRL
LgFRL
PrecsR
VacF/R
Clean FR
ElecPneuR
AirBoost
SpdContr
Silncr
CheckV/
other
Jnt/tube
AirUnt
PresCompn
Mech/
ElecPresSw
ContactSW
AirSens
PresSW
Cool
AirFloSens/
Contr
WaterRtSens
TotAirSys
(Total Air)
TotAirSys
(Gamma)
RefrDry
DesicDry
HiPolymDry
MainFiltr
Dischrg
etc
Ending



General purpose pressure gauge for clean room

G49D-P70-P9* G59D-P70-P9* Series

● Port size: R1/8, R1/4

JIS symbol



Specifications

Descriptions		G49D-P70/P9*	G59D-P70/P9*
Working fluid		Compressed air, N ₂	
Fluid temperature	°C	5 (41°F) to 60 (140°F)	
Ambient temperature	°C	5 (41°F) to 60 (140°F)	
Accuracy	*1	Full scale ±3%	
Shape		DT type (rear side screw, stock section square)	
Display system		φ43	φ52
Material	Bourdon tube	P90,P94:SUS316 P70: Copper alloy	
	Stock	P90, P94: SUS14 (SUS316 equivalent) P70: Copper alloy (nickel plating)	
	Housing	Steel (chrome plating)	
	Lens	Glass	
Pressure range	MPa	0 (≈0 psi, 0 bar) to 0.2 (≈29 psi, 2 bar) 0 (≈0 psi, 0 bar) to 0.4 (≈58 psi, 4 bar) 0 (≈0 psi, 0 bar) to 1.0 (≈150 psi, 10 bar)	
Port size	R	1/8	1/4
Weight	g	90	140

*1: The guaranteed indicator accuracy temperature is 20±15°C.

How to order

G49D - 6 - P04 - P90

A Model No.

B Port size

C Pressure display

D Clean-room specifications

⚠ Precautions for model No. selection

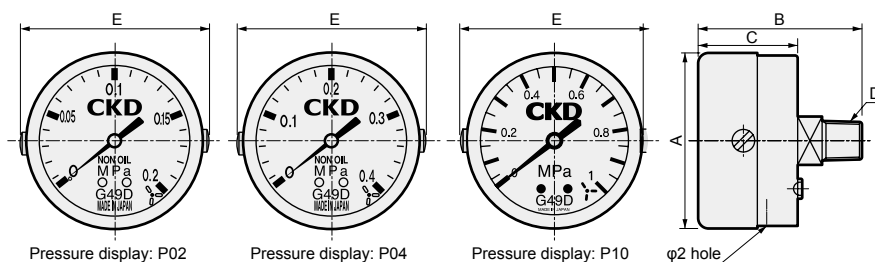
*1: Contact CKD for indications other than MPa.

*2: Contact CKD when ordering NPT thread.

Code	Content			
A Model No.				
G49D				
G59D				
B Port size *2				
6	R1/8 (G49D only)			
8	R1/4 (G59D only)			
C Pressure display [MPa] *1				
P02	0 to 0.2			
P04	0 to 0.4			
P10	0 to 1.0			
D Clean-room specifications				
	Material	Oil prohib.specs	Assembly	Packaging
P70	Copper alloy (nickel plating)	Oil free/water free	General environment	Clean packaging
P90	Stainless steel	Oil free/water free	Clean assembly	Clean packaging
P94	Stainless steel	Oil free/water free	General environment	Clean packaging

P94 prohibits the use of copper-based, silicon-based, and halogen-based materials (fluorine, chlorine, bromine).

Dimensions



Model No.	A	B	C	D	E
G49D-6 ^{P02} -P70 ^{P04} _{P10}	φ43	43.5	27.5	R 1/8	46.5
G59D-8 ^{P02} -P70 ^{P04} _{P10}	φ52	50.5	27	R 1/4	55.5
G49D-6 ^{P02} -P90 ^{P04} _{P10}	φ43	43.5	27.5	R 1/8	46.5
G59D-8 ^{P02} -P90 ^{P04} _{P10}	φ52	50.5	26.5	R 1/4	55.5