



FLUEREX flow sensor

# WFK5000 Series

(Standard)

● Flow rate range: 1.0 to 8.0/3.0 to 27.0 L/min



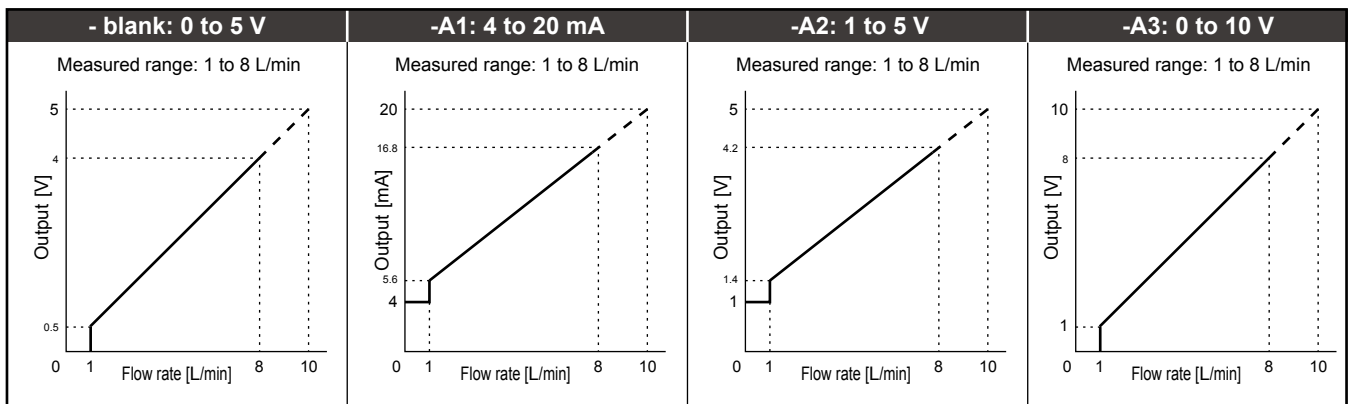
## Specifications

Descriptions		WFK5008-10	WFK5008-15	WFK5008-20	WFK5027-10	WFK5027-15	WFK5027-20	
Specifications	Flow rate measured range L/min	1.0 to 8.0			3.0 to 27.0			
	Port size Rc	3/8	1/2	3/4	3/8	1/2	3/4	
Working conditions	Port material	Stainless steel: SCS13						
	Pressure loss MPa	0.050 (≈7.3 psi, 0.5 bar) or less (at 8.0 L/min)			0.045 (≈6.5 psi, 0.45 bar) or less (at 27.0 L/min)			
Working conditions	Applicable fluid	Clear water, industrial water						
	Max. working pressure MPa	1.0 (≈150 psi, 10 bar)						
	Proof pressure MPa	1.5 (≈220 psi, 15 bar)						
	Fluid temperature °C	1 (33.8°F) to 70 (158°F)						
Working conditions	Ambient temperature °C	0 (32°F) to 50 (122°F) (85% RH or less)						
	Display	5-digit LED display						
Integrating flow		Max. 9 digits; however, H and L are split displayed Reset when powered off						
	Output	1 point (NPN/PNP transistor open collector)						
Output	Switch output	Number of points					MAX 50 mA	
		Rating					(NPN) 2.0 V or less (PNP) 2.5 V or less	
Output	Analog output	Internal voltage drop					0 to 5 VDC (linear output) standard	
		Accuracy					±2.5% F.S. ±1 digit	
Output	Switch output response time sec						Approx. 1.0 (Note)	
		Power supply voltage	12 to 24 VDC ± 10% (max. 100 mA) For option A3: 15 to 24 VDC					
Output	Cable		Accessory (3 m, 4-conductor, final diameter φ6, cable conductor 0.5 mm <sup>2</sup> , insulator O.D. φ1.9 mm, with connector)					
		Mounting orientation	Unrestricted in vertical/horizontal direction					
Output	Degree of protection		IP64 or equivalent					
		Weight g	630	600	650	630	600	650
Output	Bracket weight g		60 (including screws)					

Note: When the switch is set to 70% of the normal flow rate (used), the time until the switch output occurs after the flow rate drops instantly to 0

## Analog output

● WFK5008-\*\*



## Connecting load conditions

Descriptions	Blank [0 to 5 V]	-A1 [4 to 20 mA]	-A2 [1 to 5 V]	-A3 [0 to 10V]
Allowable load weight	50 kΩ or more	500 Ω or less	50 kΩ or more	50 kΩ or more

### How to order

**WFK** **5** **027** - **15** - **P** **A3** **B**

**A** Port shape/material

**B** Flow rate range

**C** Port size  
\*1

**D** Switch output

**E** Analog output

**F** Bracket \*4

### ⚠ Precautions for model No. selection

- \*1: For U.S. taper pipe thread, add "N" to the port size.
- \*2: Note that the switch function is not available if analog output A1 (4 to 20 mADC) is selected.
- \*3: Note that analog output is not available if analog output A5 (switch output 2 points) is selected. Switch output "P" cannot be selected.
- \*4: A bracket and set screw are included in option B.  
**If you order it separately (not as an option), specify the product name: bracket assembly and model No.: WF-FL-249969.**

### [Example of model No.]

#### WFK5027-15-PA3B

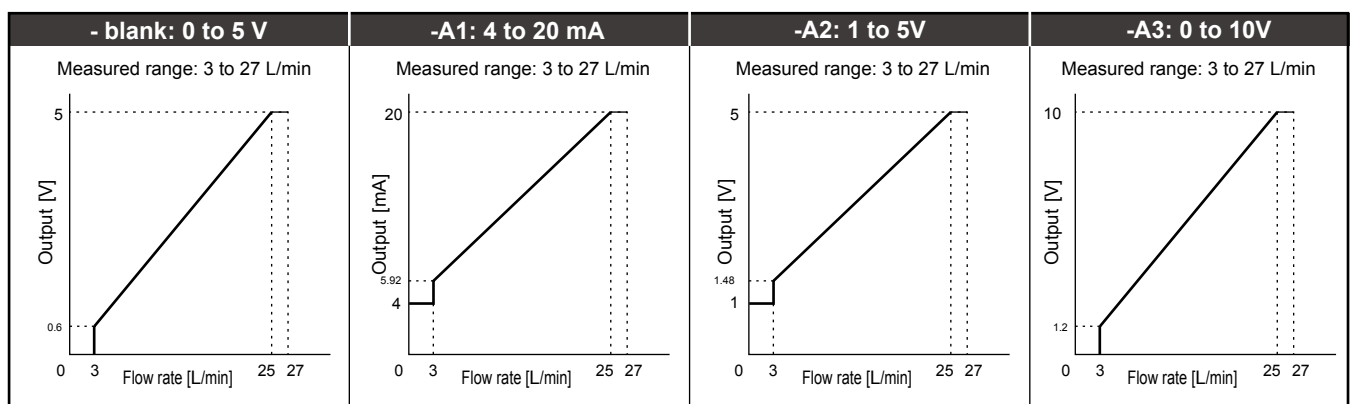
Model: FLUEREX flow sensor standard

- A** Port shape/material : Shape: female thread, material: stainless steel
- B** Flow rate range : 3 to 27 L/min
- C** Port size : Rc1/2
- D** Switch output : PNP transistor open collector
- E** Analog output : 0 to 10 VDC
- F** Bracket : Attached

Code	Content
<b>A Port shape/material</b>	
<b>5</b>	Shape: female thread, material: stainless steel (SCS13)
<b>B Flow rate range</b>	
<b>008</b>	1 to 8 L/min
<b>027</b>	3 to 27 L/min
<b>C Port size</b>	
<b>10</b>	Rc3/8
<b>15</b>	Rc1/2
<b>20</b>	Rc3/4
<b>10N</b>	3/8NPT
<b>15N</b>	1/2NPT
<b>20N</b>	3/4NPT
<b>D Switch output</b>	
<b>Blank</b>	NPN transistor open collector
<b>P</b>	PNP transistor open collector
<b>E Analog output</b>	
<b>Blank</b>	0 to 5 VDC
<b>A1</b>	4 to 20 mADC *2
<b>A2</b>	1 to 5 VDC
<b>A3</b>	0 to 10 VDC
<b>A4</b>	Without analog output
<b>A5</b>	Switch output 2 points *3
<b>F Bracket</b>	
<b>Blank</b>	None
<b>B</b>	Bracket attached (including mounting screws)

### Analog output

#### ● WFK5027-\*\*-\*\*



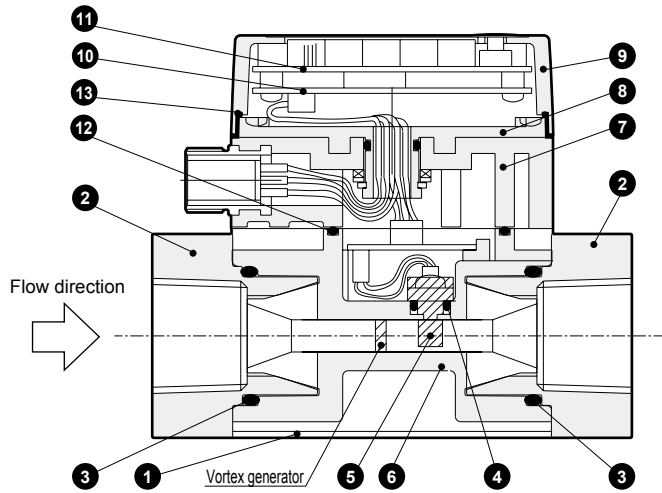
### Connecting load conditions

Descriptions	Blank [0 to 5 V]	- A1 [4 to 20 mA]	- A2 [1 to 5 V]	- A3 [0 to 10 V]
Allowable load weight	50 kΩ or more	500 Ω or less	50 kΩ or more	50 kΩ or more

F.R.L
F (Filtr)
R (Reg)
L (Lub)
PresSW
Shutoff
SlowStart
FmResistFR
Oil-ProhR
MedPresFR
No Cu/ PTFE FRL
Outdrs FR
F.R.L (Related)
CompFRL
LgFRL
PrescR
VacF/R
Clean FR
ElecPneuR
AirBoost
SpdContr
Silncr
CheckV/ other
Jnt/tube
AirUnt
PresCompn
Mech/ ElecPresSw
ContactSW
AirSens
PresSW Cool
AirFloSens/ Contr
WaterRtSens
TotAirSys (Total Air)
TotAirSys (Gamma)
RefrDry
DesicDry
HiPolymDry
MainFiltr
Dischrg etc
Ending

# WFK5000 Series

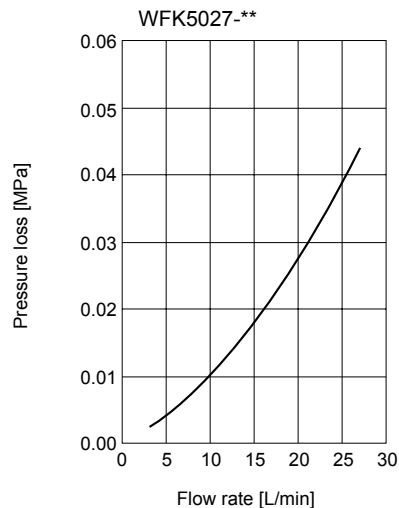
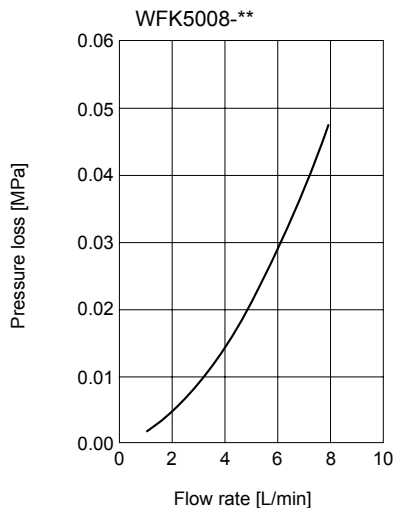
## F.R.L Internal structure and parts list



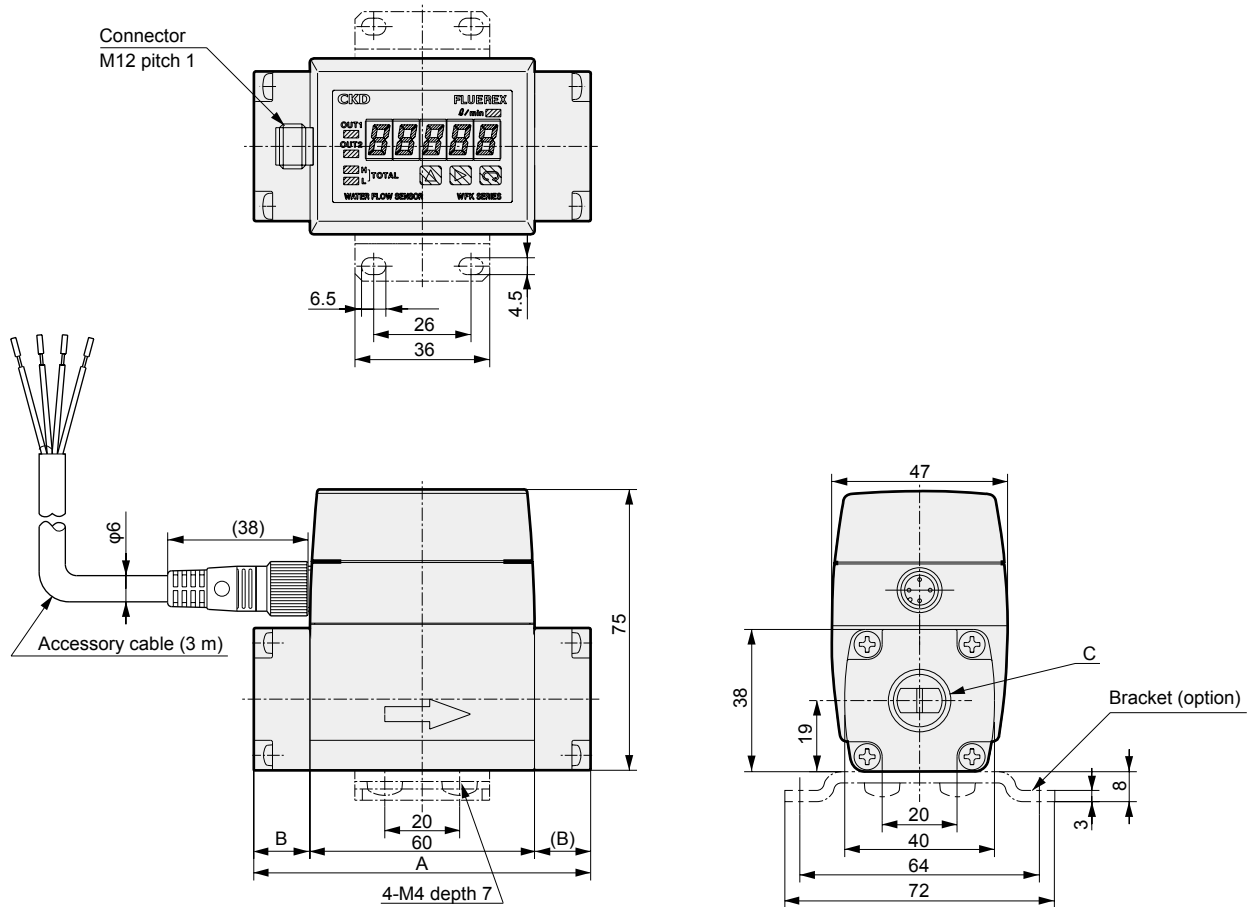
**Cannot be disassembled**

No.	Part name	Material		Quantity
1	Body	SCS13	Stainless steel casting	1
2	Attachment	SCS13	Stainless steel casting	2
3	O-ring	NBR	Nitrile rubber	2
4	O-ring	NBR	Nitrile rubber	1
5	Vortex detector	PPS resin (interior: piezo ceramic)		1
6	Sleeve	PPS resin		1
7	Connector case	ABS resin		1
8	Case B	PC/ABS alloy resin		1
9	Case A	ABS resin		1
10	CPU board	-		1
11	Display board	-		1
12	Sleeve packing	NBR	Nitrile rubber	1
13	Case packing	NBR	Nitrile rubber	1

## Pressure loss



### Dimensions



Model No.	A	B	C
WFK50**-10	90	15	Rc3/8
WFK50**-15	90	15	Rc1/2
WFK50**-20	105	22.5	Rc3/4
WFK50**-10N	90	15	3/8NPT
WFK50**-15N	90	15	1/2NPT
WFK50**-20N	105	22.5	3/4NPT

F.R.L
F (Filtr)
R (Reg)
L (Lub)
PresSW
Shutoff
SlowStart
FimResistFR
Oil-ProhR
MedPresFR
No Cu/ PTFE FRL
Outdrs FR
F.R.L (Related)
CompFRL
LgFRL
PrecsR
VacF/R
Clean FR
ElecPneuR
AirBoost
SpdContr
Silncr
CheckV/ other
Jnt/tube
AirUnt
PrecsCompn
Mech/ ElecPresSw
ContactSW
AirSens
PresSW Cool
AirFloSens/ Contr
WaterRtSens
TotAirSys (Total Air)
TotAirSys (Gamma)
RefrDry
DesicDry
HiPolymDry
MainFiltr
Dischrg etc
Ending



FLUEREX flow sensor

# WFK6000 Series

(Modular connection)

● Flow rate range: 1.0 to 8.0/3.0 to 27.0 L/min



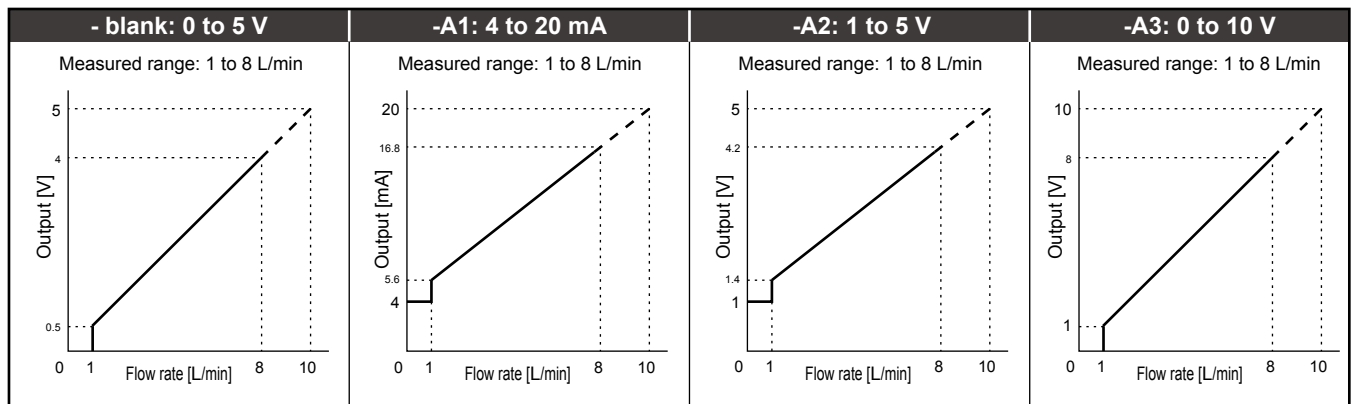
## Specifications

Descriptions		WFK6008-10	WFK6008-15	WFK6008-20	WFK6027-10	WFK6027-15	WFK6027-20
Specifications	Flow rate measured range L/min	1.0 to 8.0			3.0 to 27.0		
	Port size Rc	3/8	1/2	3/4	3/8	1/2	3/4
	Port material	Stainless steel: SCS13					
	Pressure loss MPa	0.050 (≈7.3 psi, 0.5 bar) or less (at 8.0 L/min)			0.045 (≈6.5 psi, 0.45 bar) or less (at 27.0 L/min)		
Specification conditions	Applicable fluid	Clear water, industrial water					
	Max. working pressure MPa	1.0 (≈150 psi, 10 bar)					
	Proof pressure MPa	1.5 (≈220 psi, 15 bar)					
	Fluid temperature °C	1 (33.8°F) to 70 (158°F)					
	Ambient temperature °C	0 (32°F) to 50 (122°F) (85% RH or less)					
Display		5-digit LED display					
Integrating flow		Max. 9 digits; however, H and L are split displayed Reset when powered off					
Output	Switch output	Number of points	1 point (NPN/PNP transistor open collector)				
		Rating	MAX 50 mA				
	Analog output	Internal voltage drop	(NPN) 2.0 V or less (PNP) 2.5 V or less				
		Accuracy	0 to 5 VDC (linear output) standard ±2.5% F.S. ±1 digit				
Switch output response time sec		Approx. 1.0 (Note)					
Power supply voltage		12 to 24 VDC ± 10% (max. 100 mA) For option A3: 15 to 24 VDC					
Cable		Accessory (3 m, 4-conductor, final diameter φ6, cable conductor 0.5 mm <sup>2</sup> , insulator O.D. φ1.9 mm, with connector)					
Mounting orientation		Unrestricted in vertical/horizontal direction					
Degree of protection		IP64 or equivalent					
Weight	g	830	810	850	830	810	850
Bracket weight	g	60 (including screws)					

Note: When the switch is set to 70% of the normal flow rate (used), the time until the switch output occurs after the flow rate drops instantly to 0

## Analog output

● WFK6008-\*\*



## Connecting load conditions

Descriptions	Blank [0 to 5 V]	- A1 [4 to 20 mA]	- A2 [1 to 5 V]	- A3 [0 to 10 V]
Allowable load weight	50 kΩ or more	500 Ω or less	50 kΩ or more	50 kΩ or more

### How to order

**WFK 6 027 - 15 - P A3 B**

**A** Port shape/material

**B** Flow rate range

**C** Port size  
\*1

**D** Switch output

**E** Analog output

**F** Bracket  
\*4

### ⚠ Precautions for model No. selection

\*1: For U.S. taper pipe thread, add "N" to the port size.

\*2: Note that the switch function is not available if analog output A1 (4 to 20 mADC) is selected.

\*3: Note that analog output is not available if analog output A5 (switch output 2 points) is selected. Switch output "P" cannot be selected.

\*4: A bracket and set screw are included in option B. **If you order it separately (not as an option), specify the product name: bracket assembly and model No.: WF-FL-249969.**

### [Example of model No.]

#### WFK6027-15-PA3B

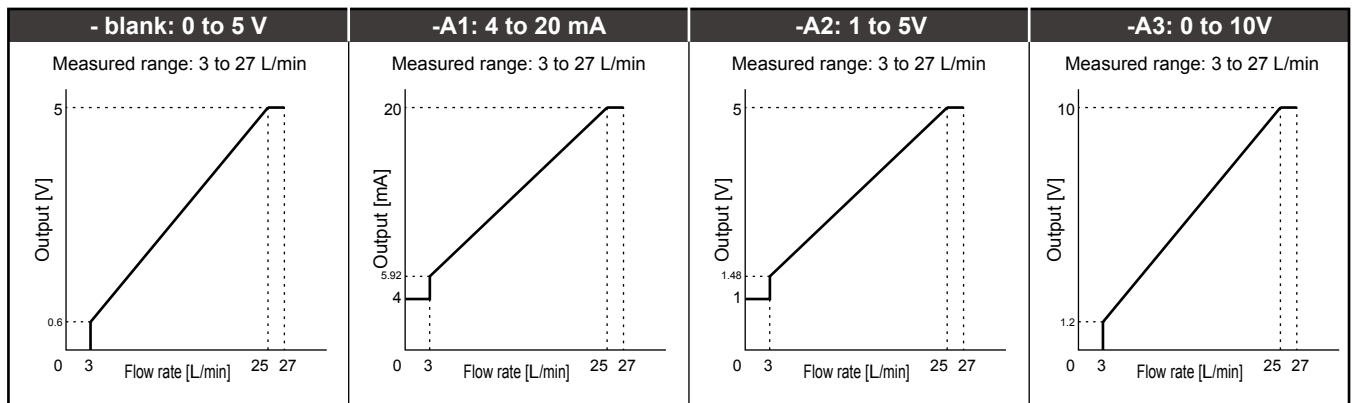
Model: FLUEREX flow sensor module

- A** Port shape/material : Shape: female thread, material: stainless steel
- B** Flow rate range : 3 to 27 L/min
- C** Port size : Rc1/2
- D** Switch output : PNP transistor open collector
- E** Analog output : 0 to 10 VDC
- F** Bracket : Attached

Code	Content
<b>A Port shape/material</b>	
6	Shape: female thread, material: stainless steel (SCS13)
<b>B Flow rate range</b>	
008	1 to 8 L/min
027	3 to 27 L/min
<b>C Port size</b>	
10	Rc3/8
15	Rc1/2
20	Rc3/4
10N	3/8NPT
15N	1/2NPT
20N	3/4NPT
<b>D Switch output</b>	
Blank	NPN transistor open collector
P	PNP transistor open collector
<b>E Analog output</b>	
Blank	0 to 5 VDC
A1	4 to 20 mADC *2
A2	1 to 5 VDC
A3	0 to 10 VDC
A4	Without analog output
A5	Switch output 2 points *3
<b>F Bracket</b>	
Blank	None
B	Bracket attached (including mounting screws)

### Analog output

#### ● WFK6027-\*\*



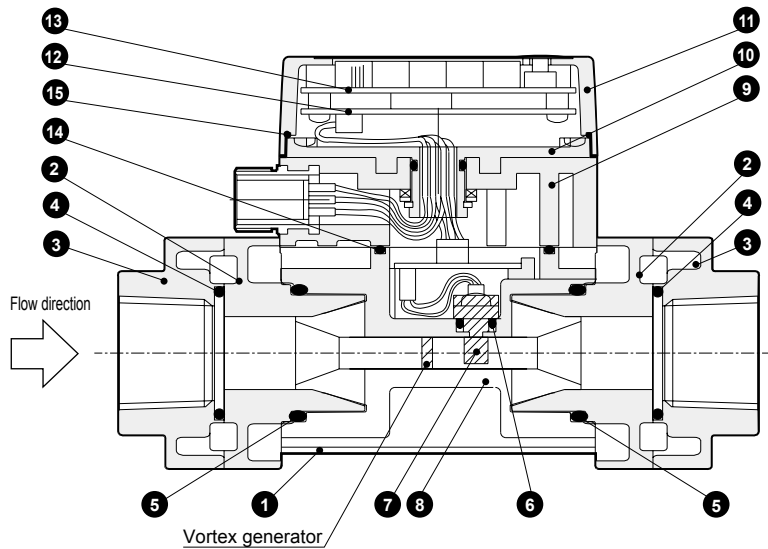
### Connecting load conditions

Descriptions	Blank [0 to 5 V]	- A1 [4 to 20 mA]	- A2 [1 to 5 V]	- A3 [0 to 10 V]
Allowable load weight	50 kΩ or more	500 Ω or less	50 kΩ or more	50 kΩ or more

F.R.L
F (Filtr)
R (Reg)
L (Lub)
PresSW
Shutoff
SlowStart
FimResistFR
Oil-ProhR
MedPresFR
No Cu/ PTFE FRL
Outdrs FR
F.R.L (Related)
CompFRL
LgFRL
PrescR
VacF/R
Clean FR
ElecPneuR
AirBoost
SpdContr
Silncr
CheckV/ other
Jnt/tube
AirUnt
PrescCompn
Mech/ ElecPresSw
ContactSW
AirSens
PresSW Cool
AirFloSens/ Contr
WaterRtSens
TotAirSys (Total Air)
TotAirSys (Gamma)
RefrDry
DesicDry
HiPolymDry
MainFiltr
Dischrg etc
Ending

# WFK6000 Series

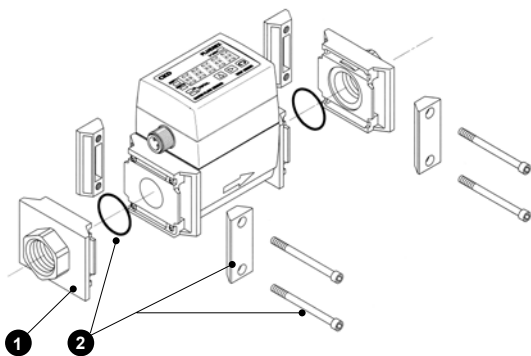
## F.R.L Internal structure and parts list



**Cannot be disassembled**

No.	Part name	Material	Quantity	No.	Part name	Material	Quantity
1	Body	SCS13 Stainless steel casting	1	9	Connector case	ABS resin	1
2	Attachment K	SCS13 Stainless steel casting	2	10	Case B	PC/ABS alloy resin	1
3	Attachment	SCS13 Stainless steel casting	2	11	Case A	ABS resin	1
4	O-ring	NBR Nitrile rubber	2	12	CPU board	-	1
5	O-ring	NBR Nitrile rubber	2	13	Display board	-	1
6	O-ring	NBR Nitrile rubber	1	14	Sleeve packing	NBR Nitrile rubber	1
7	Vortex detector	PPS resin (interior: piezo ceramic)	1	15	Case packing	NBR Nitrile rubber	1
8	Sleeve	PPS resin	1				

## Modular assembly



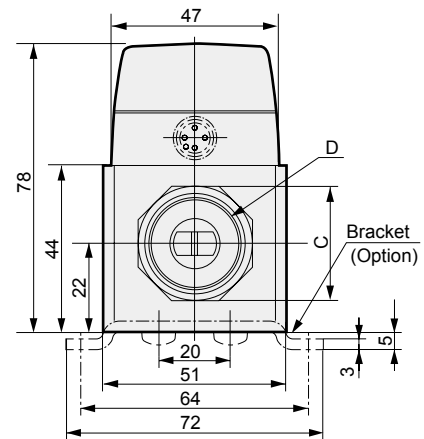
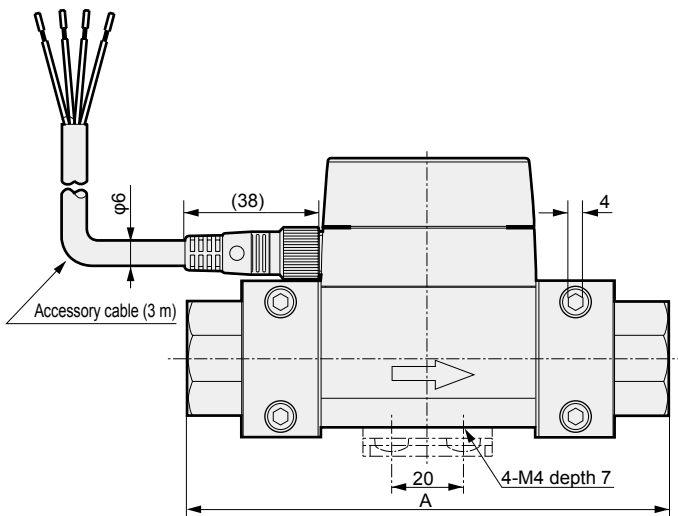
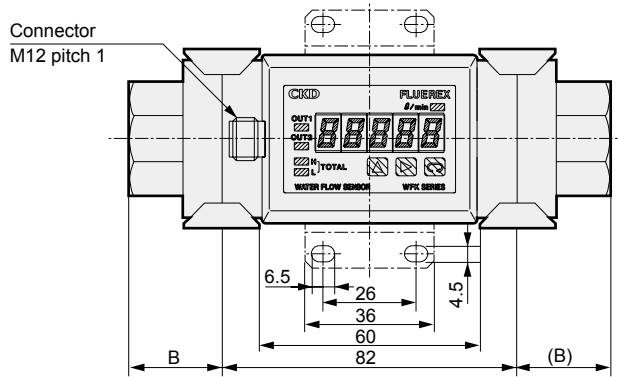
Model No.	Port size	(1) Attachment	(2) Joiner set
WFK60**-10	Rc3/8	WF-FL-290810	WF-FL-298234 (common)
WFK60**-15	Rc1/2	WF-FL-290811	
WFK60**-20	Rc3/4	WF-FL-290812	
WFK60**-10N	3/8NPT	WF-FL-290813	
WFK60**-15N	1/2NPT	WF-FL-290814	
WFK60**-20N	3/4NPT	WF-FL-290815	

\* The model numbers of attachment and joiner set are for one side only. If replacing pieces of both sides, specify 2 as the quantity.

## Dimensions

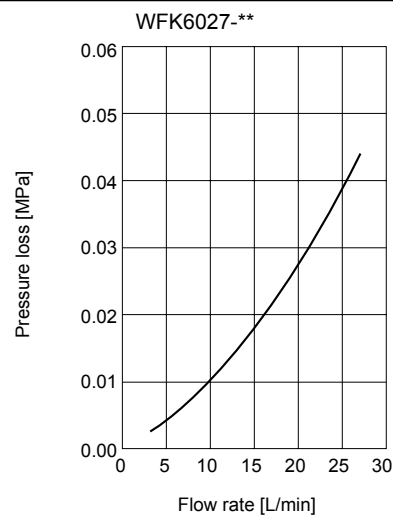
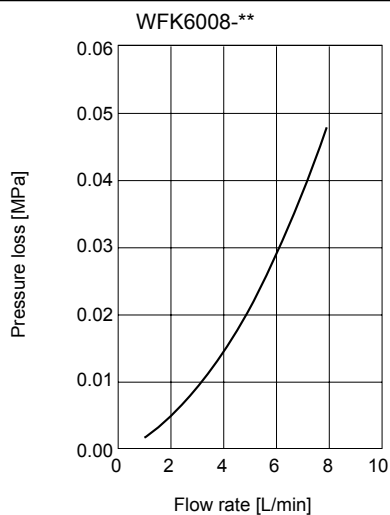


- F.R.L
- F (Filtr)
- R (Reg)
- L (Lub)
- PresSW
- Shutoff
- SlowStart
- FimResistFR
- Oil-ProhR
- MedPresFR
- No Cu/  
PTFE FRL
- Outdrs FR
- F.R.L  
(Related)
- CompFRL
- LgFRL
- PrecsR
- VacF/R
- Clean FR
- ElecPneuR
- AirBoost
- SpdContr
- Silncr
- CheckV/  
other
- Jnt/tube
- AirUnt
- PrecsCompn
- Mech/  
ElecPresSw
- ContactSW
- AirSens
- PresSW  
Cool
- AirFloSens/  
Contr
- WaterRtSens
- TotAirSys  
(Total Air)
- TotAirSys  
(Gamma)
- RefrDry
- DesicDry
- HiPolymDry
- MainFiltr
- Dischrg  
etc
- Ending

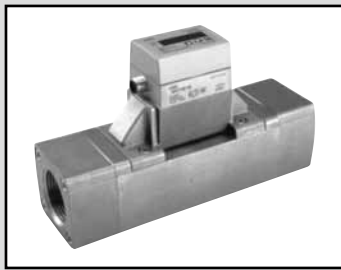


Model No.	A	B	C	D
WFK60**-10	122	20	24 (hexagon)	Rc3/8
WFK60**-15	122	20	27 (hexagon)	Rc1/2
WFK60**-20	134	26	32 (octagon)	Rc3/4
WFK60**-10N	122	20	24 (hexagon)	3/8NPT
WFK60**-15N	122	20	27 (hexagon)	1/2NPT
WFK60**-20N	134	26	32 (octagon)	3/4NPT

## Pressure loss







FLUEREX flow sensor

# WFK7000 Series

(Large flow rate)

● Flow rate range: 10 to 50 / 20 to 100 / 40 to 200 L/min



## Specifications

1 MPa = 10 bar

Descriptions		WFK7050-20	WFK7050-25	WFK7100-25	WFK7100-32	WFK7200-32	WFK7200-40
Specifications	Flow rate measured range L/min	10 to 50		20 to 100		40 to 200	
	Port size Rc	3/4	1	1	1 1/4	1 1/4	1 1/2
Specifications	Port material	Stainless steel: SCS13					
	Pressure loss MPa	0.050 (≈7.3 psi) or less (at 50 L/min)		0.050 (≈7.3 psi) or less (at 100 L/min)		0.050 (≈7.3 psi) or less (at 200 L/min)	
Working conditions	Applicable fluid	Clear water, industrial water					
	Max. working pressure MPa	1.0 (≈150 psi, 10 bar)					
	Proof pressure MPa	1.5 (≈220 psi, 15 bar)					
	Fluid temperature °C	1 (33.8°F) to 70 (158°F)					
	Ambient temperature °C	0 (32°F) to 50 (122°F) (85% RH or less)					
Display		5-digit LED display					
Integrating flow		Max. 9 digits; however, H and L are split displayed Reset when powered off					
Output	Switch output	Number of points	1 point (NPN/PNP transistor open collector)				
		Rating	MAX 50 mA				
		Internal voltage drop	(NPN) 2.0 V or less (PNP) 2.5 V or less				
	Analog output	0 to 5 VDC (linear output) standard					
Accuracy		±2.5% F.S. ±1 digit					
Alarm output responsiveness sec		Approx. 1.0 (Note)					
Power supply voltage		12 to 24 VDC ± 10% (max. 100 mA) For option A3: 15 to 24 VDC					
Cable		Accessory (3 m, 4-conductor, final diameter φ6, cable conductor 0.5 mm <sup>2</sup> , insulator O.D. φ1.9 mm, with connector)					
Mounting orientation		Unrestricted in vertical/horizontal direction					
Degree of protection		IP64 or equivalent					
Weight g		4400	4200	4000	4000	3800	
Bracket weight g		94 g (including screws)					

Note: When the switch is set to 70% of the normal flow rate (used), the time until the switch output occurs after the flow rate drops instantly to 0

- F.R.L
- F (Filtr)
- R (Reg)
- L (Lub)
- PresSW
- Shutoff
- SlowStart
- FimResistFR
- Oil-Prohr
- MedPresFR
- No Cu/ PTFE FRL
- Outdrs FR
- F.R.L (Related)
- CompFRL
- LgFRL
- PrecsR
- VacF/R
- Clean FR
- ElecPneur
- AirBoost
- SpdContr
- Silncr
- CheckV/ other
- Jnt/tube
- AirUnt
- PrecsCompn
- Mech/ ElecPresSw
- ContactSW
- AirSens
- PresSW Cool
- AirFloSens/ Contr
- WaterRtSens
- TotAirSys (Total Air)
- TotAirSys (Gamma)
- RefrDry
- DesicDry
- HiPolymDry
- MainFiltr
- Dischrg etc
- Ending

### How to order

**WFK 7 050 - 20 - P A3 B**

**A** Port shape/material

**B** Flow rate range

**C** Port size  
\*1

**D** Switch output

**E** Analog output

**F** Bracket  
\*4

### ⚠ Precautions for model No. selection

\*1: For U.S. taper pipe thread, add "N" to the port size.

\*2: Note that the switch function is not available if analog output A1 (4 to 20 mADC) is selected.

\*3: Note that analog output is not available if analog output A5 (switch output 2 points) is selected. Switch output "P" cannot be selected.

\*4: A bracket and set screw are included in option B.

**If you order it separately (not as an option), specify the product name: bracket assembly 2 and model No.: WF-FL-251256.**

### [Example of model No.]

#### WFK7050-20-PA3B

Model: FLUEREX flow sensor large flow rate

**A** Port shape/material: Shape: female thread, material: stainless steel

**B** Flow rate range : 10 to 50 L/min

**C** Port size : Rc3/4

**D** Switch output : PNP transistor/open collector

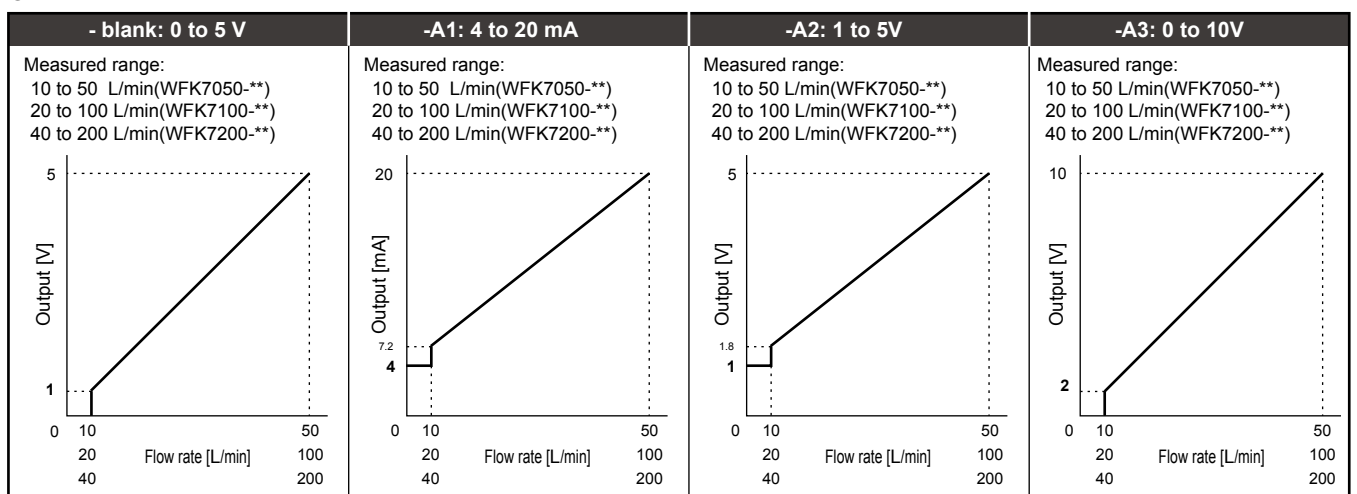
**E** Analog output : 0 to 10 VDC

**F** Bracket : Attached

Code	Content			
<b>A Port shape/material</b>				
7	Shape: female thread, material: stainless steel (SCS13)			
<b>B Flow rate range</b>				
050	10 to 50 L/min			
100	20 to 100 L/min			
200	40 to 200 L/min			
<b>C Port size</b>				
	Flow rate range	050	100	200
20	Rc3/4	●	-	-
25	Rc1	●	●	-
32	Rc1 1/4	-	●	●
40	Rc1 1/2	-	-	●
20N	3/4NPT	●	-	-
25N	1NPT	●	●	-
32N	1 1/4NPT	-	●	●
40N	1 1/2NPT	-	-	●
<b>D Switch output</b>				
Blank	NPN transistor open collector			
P	PNP transistor open collector			
<b>E Analog output</b>				
Blank	0 to 5 VDC			
A1	4 to 20 mADC	*2		
A2	1 to 5 VDC			
A3	0 to 10 VDC			
A4	Without analog output			
A5	Switch output 2 points	*3		
<b>F Bracket</b>				
Blank	None			
B	Bracket attached (including mounting screws)			

### Analog output

#### ● WFK7050-\*/WFK7100-\*/WFK7200-\*



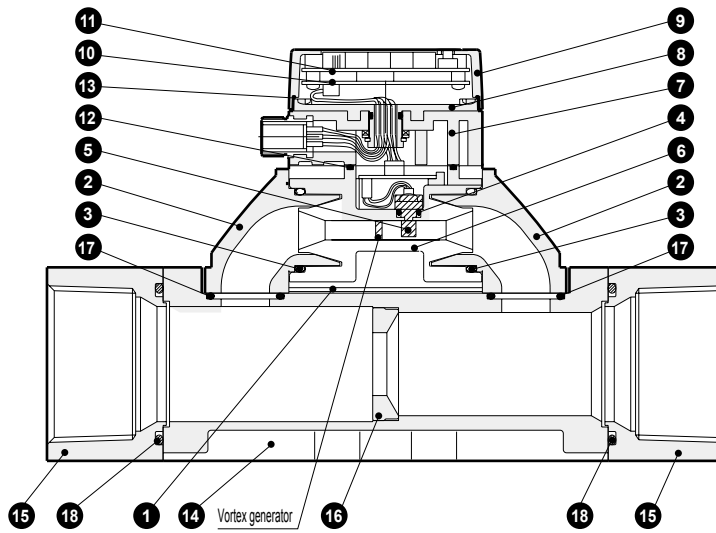
### Connecting load conditions

Descriptions	Blank [0 to 5 V]	- A1 [4 to 20 mA]	- A2 [1 to 5 V]	- A3 [0 to 10 V]
Allowable load weight	50 kΩ or more	500 Ω or less	50 kΩ or more	50 kΩ or more

F.R.L
F (Filtr)
R (Reg)
L (Lub)
PresSW
Shutoff
SlowStart
FmResistFR
Oil-ProhR
MedPresFR
No Cu/ PTFE FRL
Outdrs FR
F.R.L (Related)
CompFRL
LgFRL
PrecsR
VacF/R
Clean FR
ElecPneuR
AirBoost
SpdContr
Silncr
CheckV/ other
Jnt/tube
AirUnt
PrecsCompn
Mech/ ElecPresSw
ContactSW
AirSens
PresSW Cool
AirFloSens/ Contr
WaterRtSens
TotAirSys (Total Air)
TotAirSys (Gamma)
RefrDry
DesicDry
HiPolymDry
MainFiltr
Dischrg etc
Ending

# WFK7000 Series

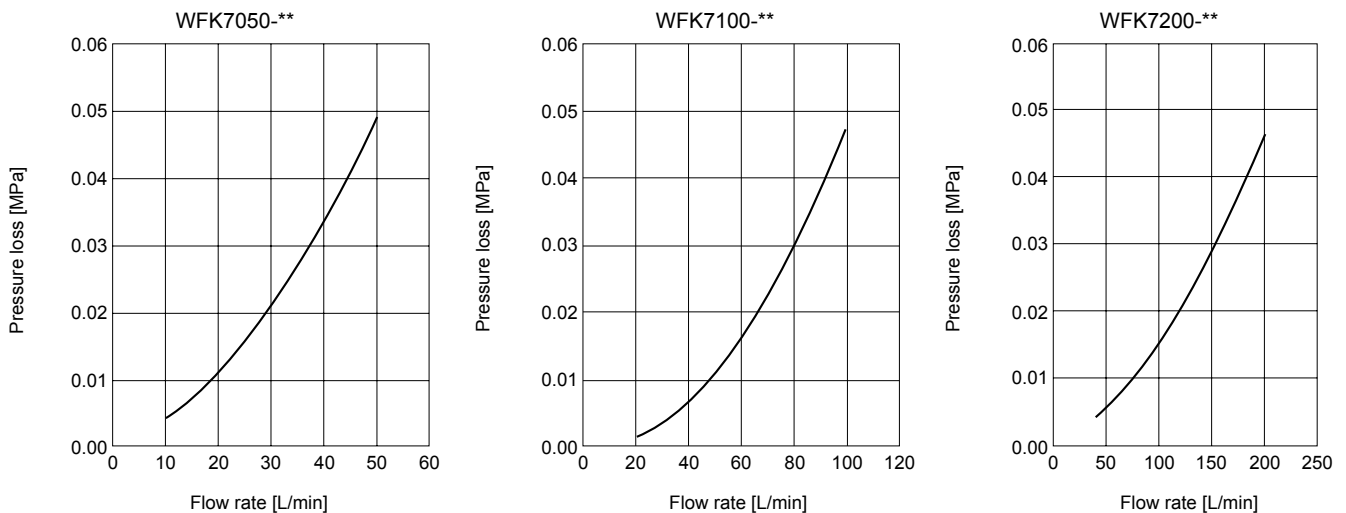
## F.R.L Internal structure and parts list



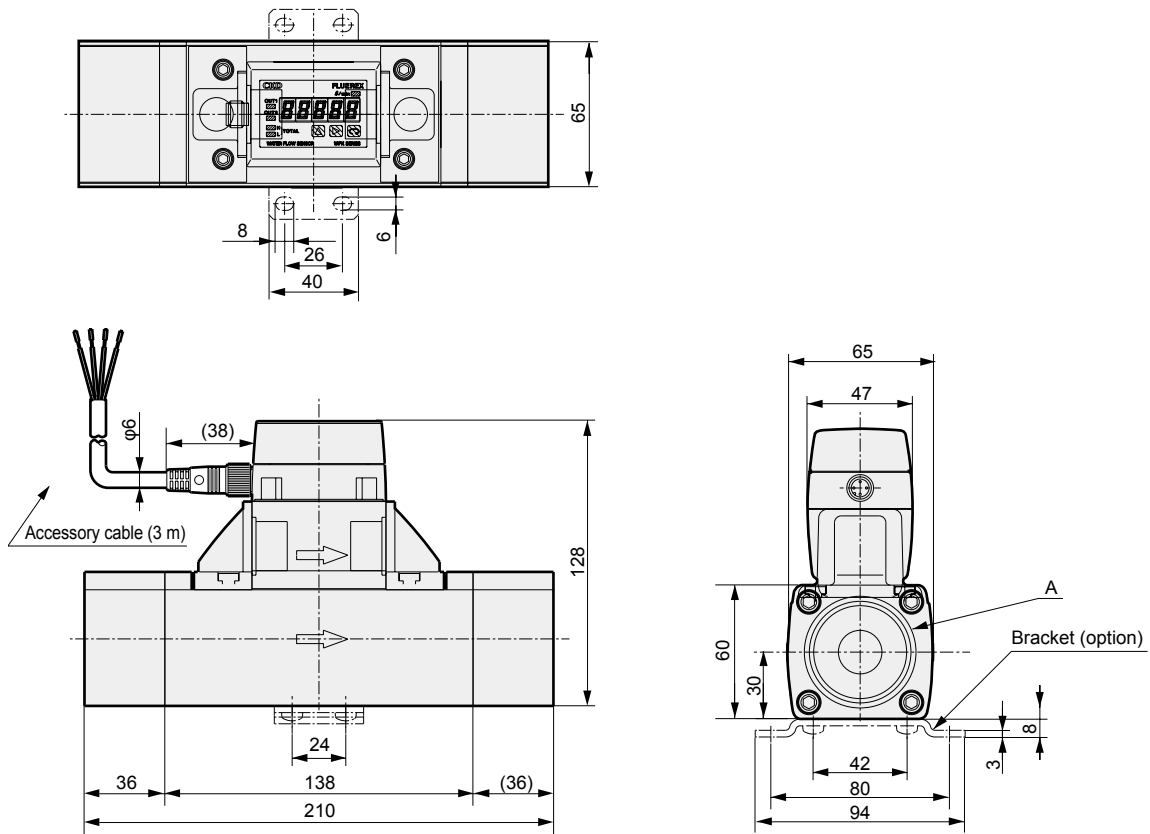
**Cannot be disassembled**

No.	Part name	Material	Quantity	No.	Part name	Material	Quantity
1	Body	SCS13 Stainless steel casting	1	10	CPU board	-	1
2	Sub-attachment	SCS13 Stainless steel casting	2	11	Display board	-	1
3	O-ring	NBR Nitrile rubber	2	12	Sleeve packing	NBR Nitrile rubber	1
4	O-ring	NBR Nitrile rubber	1	13	Case packing	NBR Nitrile rubber	1
5	Vortex detector	PPS resin (interior: piezo ceramic)	1	14	Main body	SCS13 Stainless steel casting	1
6	Sleeve	PPS resin	1	15	Main attachment	SCS13 Stainless steel casting	2
7	Connector case	ABS resin	1	16	Orifice	SUS304 Stainless steel	1
8	Case B	PC/ABS resin	1	17	O-ring	NBR Nitrile rubber	2
9	Case A	ABS resin	1	18	O-ring	NBR Nitrile rubber	2

## Pressure loss



### Dimensions



Model No.	A
WFK7050-20	Rc3/4
WFK7050-25	Rc1
WFK7100-25	Rc1
WFK7100-32	Rc1 1/4
WFK7200-32	Rc1 1/4
WFK7200-40	Rc1 1/2
WFK7050-20N	3/4NPT
WFK7050-25N	1NPT
WFK7100-25N	1NPT
WFK7100-32N	1 1/4NPT
WFK7200-32N	1 1/4NPT
WFK7200-40N	1 1/2NPT

F.R.L
F (Filtr)
R (Reg)
L (Lub)
PresSW
Shutoff
SlowStart
FimResistFR
Oil-ProhR
MedPresFR
No Cu/ PTFE FRL
Outdrs FR
F.R.L (Related)
CompFRL
LgFRL
PrecsR
VacF/R
Clean FR
ElecPneuR
AirBoost
SpdContr
Silncr
CheckV/ other
Jnt/tube
AirUnt
PrecsCompn
Mech/ ElecPresSw
ContactSW
AirSens
PresSW Cool
AirFloSens/ Contr
WaterRtSens
TotAirSys (Total Air)
TotAirSys (Gamma)
RefrDry
DesicDry
HiPolymDry
MainFiltr
Dischrg etc
Ending