

Miniature meter-in meter-out speed controller

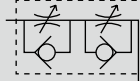
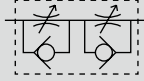
# SCD-M3/M5 Series

Compact, lightweight and thin body. Speed control valve for air supply and exhaust.

JIS symbol

● SCD-M\*-S  
(straight)

● SCD-M\*-A  
(adjustable)



## Specifications

Descriptions	SCD-M3-S	SCD-M3-A	SCD-M5-S	SCD-M5-A	SCD-M5-S-F	SCD-M5-A-F
Working fluid	Compressed air					
Max. working pressure MPa	0.7 (≈100 psi, 7 bar)					
Min. working pressure MPa	0.1 (≈15 psi, 1 bar)					
Proof pressure MPa	1.05 (≈150 psi, 10.5 bar)					
Fluid temperature °C	5 (41°F) to 60 (140°F) (no freezing. *1)					
Ambient temperature °C	0 (32°F) to 60 (140°F) (no freezing)					
Port size	M3×0.5			M5×0.8		
Cylinder bore mm	φ4 to φ8			φ6 to φ25		
Dial indicator value	10				14	
Weight g	3.1	3.9	10	11.7	10.8	12.5
Control flow rate ℓ/min(ANR)	13		37		6.7	
Eff. X-sectional area mm <sup>2</sup>	0.2		0.55		0.1	

\*1: Freezing may occur due to adiabatic expansion depending on the air quality (dew point).

\*2: Flow rate is the atmospheric pressure conversion at 0.5 MPa.

## How to order

SCD - M3 - S - F

Model No.

A Port size

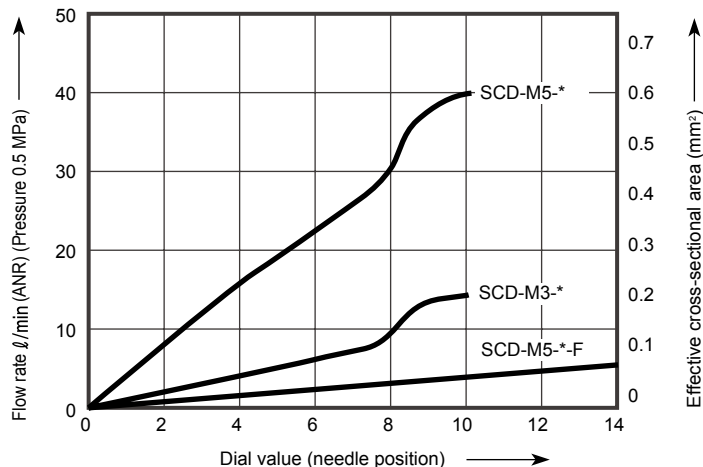
B Shape

C Flow characteristics

Code	Content
<b>A Port size</b>	
M3	M3×0.5
M5	M5×0.8
<b>B Shape</b>	
S	Straight
A	Adjustable
<b>C Flow characteristics</b>	
Blank	Standard
F	Fine speed (M5 only)

\*1: For fine speed, the lock nut exterior is blue.

## Flow characteristics

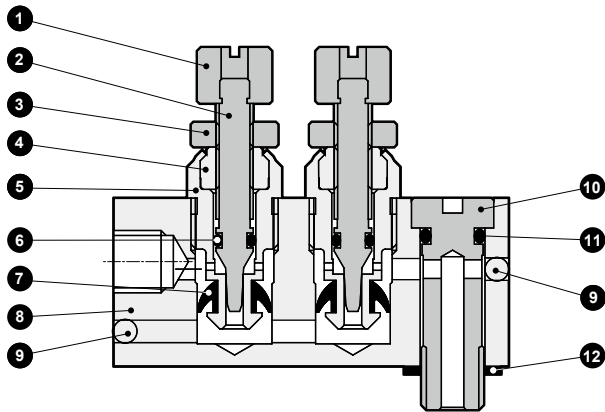


# SCD-M3/M5 Series

Internal structure/external dimensions

## Internal structure and parts list

● Adjustable



No.	Part name	Material
1	Knob	Aluminum alloy
2	Needle	Stainless steel
3	Lock nut	Aluminum alloy
4	Needle guide	Aluminum alloy (Fine speed is stainless steel)
5	Check bracket	Aluminum alloy
6	O-ring	Nitrile rubber
7	Packing	Hydrogenated nitrile rubber
8	Body	Aluminum alloy
9	Steel ball	Stainless steel
10	Bolt	Copper alloy
11	O-ring	Nitrile rubber
12	Gasket	Steel + nitrile rubber

\*1: For the outside of handle, one side is painted with black.  
(For adjustable, black indicates meter-in)

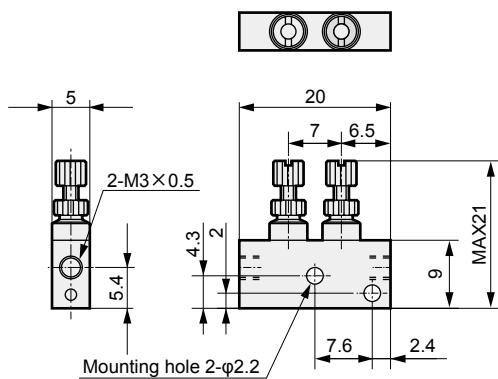
\*2: The materials are the same for the straight (without 10 11 12).

\*3: Copper alloy parts have electroless nickel plating.

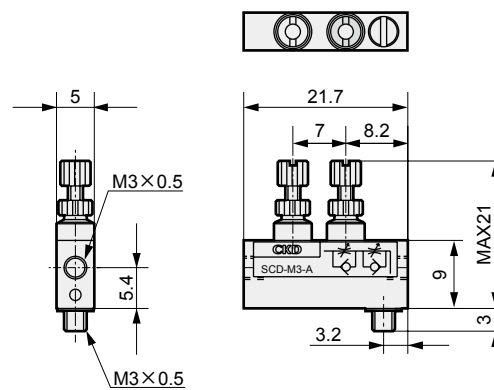
## Dimensions



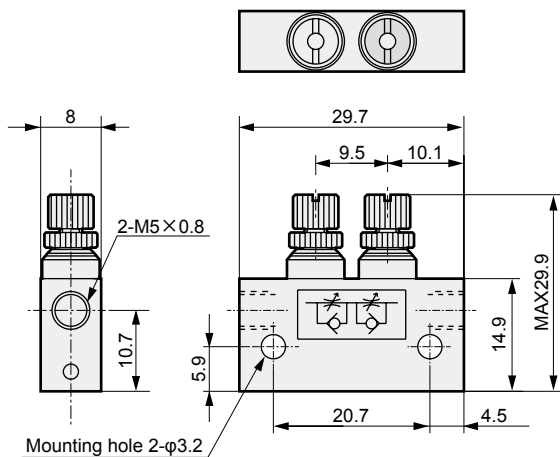
● SCD-M3-S (straight)



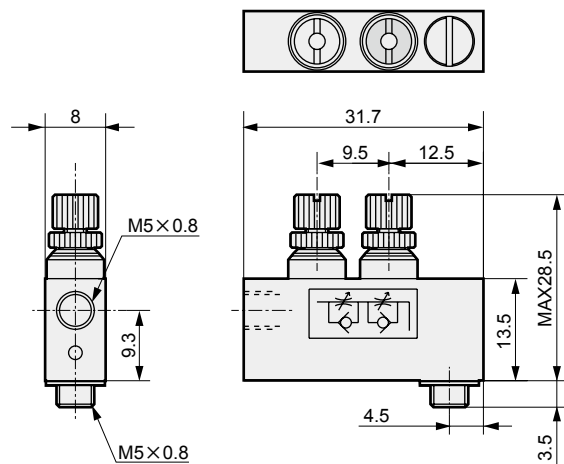
● SCD-M3-A (adjustable)



● SCD-M5-S (straight)



● SCD-M5-A (adjustable)



F.R.L
F (Filtr)
R (Reg)
L (Lub)
PresSW
Shutoff
SlowStart
FimResistFR
Oil-ProhR
MedPresFR
No Cu/ PTFE FRL
Outdrs FR
F.R.L (Related)
CompFRL
LgFRL
PrecsR
VacF/R
Clean FR
ElecPneuR
AirBoost
SpdContr
Silncr
CheckV/ other
Jnt/tube
AirUnt
PrecsCompn
Mech/ ElecPresSw
ContactSW
AirSens
PresSW Cool
AirFloSens/ Contr
WaterRISens
TotAirSys (Total Air)
TotAirSys (Gamma)
RefrDry
DesicDry
HiPolymDry
MainFiltr
Dischrg etc
Ending