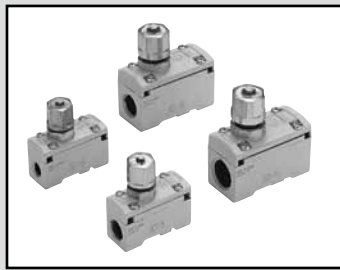
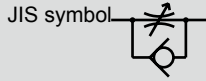


Speed controller Medium bore size

# SC1 Series

● Port size: Rc1/8 to Rc1/2



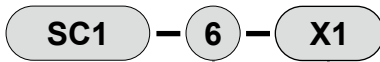
## Specifications

Descriptions	SC1-6	SC1-8	SC1-10	SC1-15
Working fluid	Compressed air			
Max. working pressure MPa	1.0 (≈150 psi, 10 bar)			
Min. working pressure MPa	0.05 (≈7.3 psi, 0.5 bar)			
Proof pressure MPa	1.5 (≈220 psi, 15 bar)			
Fluid temperature °C	5 (41°F) to 60 (140°F) (no freezing *2) (5°C (41°F) to 120°C (248°F) for heat-resistant/ozone-proof specifications)			
Ambient temperature °C	0 (32°F) to 60 (140°F) (no freezing) (5°C (41°F) to 120°C (248°F) for heat-resistant/ozone-proof specifications)			
Port size Rc	1/8	1/4	3/8	1/2
Weight g	100	95	205	195
Cylinder bore size mm	φ20 to φ50	φ32 to φ75	φ50 to φ140	φ80 to φ160
Dial indicator value	10	10	10	10
Free flow	Flow rate ℓ/min(ANR)	730	930	2600
	Eff. X-sectional area mm <sup>2</sup>	11	14	39
Controlled flow	Flow rate ℓ/min(ANR)	530	870	1500
	Eff. X-sectional area mm <sup>2</sup>	8	13	22

\*1: Flow rate is the atmospheric pressure conversion at 0.5 MPa.

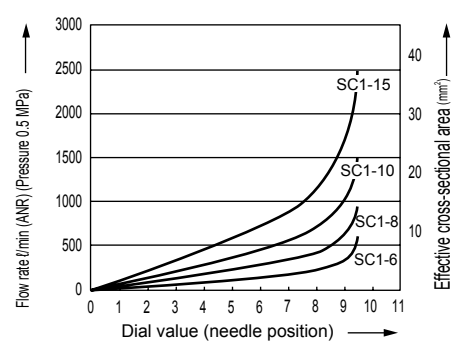
\*2: Freezing may occur due to adiabatic expansion depending on the air quality (dew point).

## How to order



Code	Content
<b>A Port size</b>	
<b>6</b>	Rc1/8
<b>8</b>	Rc1/4
<b>10</b>	Rc3/8
<b>15</b>	Rc1/2
<b>B Option 1</b>	
<b>Blank</b>	No option
<b>X1</b>	Heat resistance (120°C or less)/ozone-proof specifications
<b>P6</b>	Copper and PTFE free specifications

## Flow characteristics



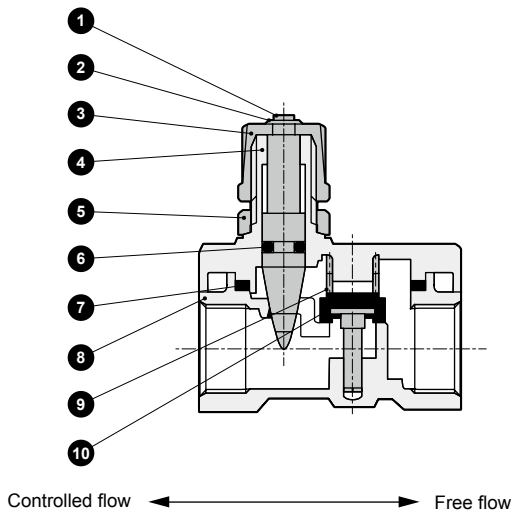
## Clean-room specifications

(Catalog No. CB-033SA)

● Anti-dust generation structure for use in cleanrooms



### Internal structure and parts list



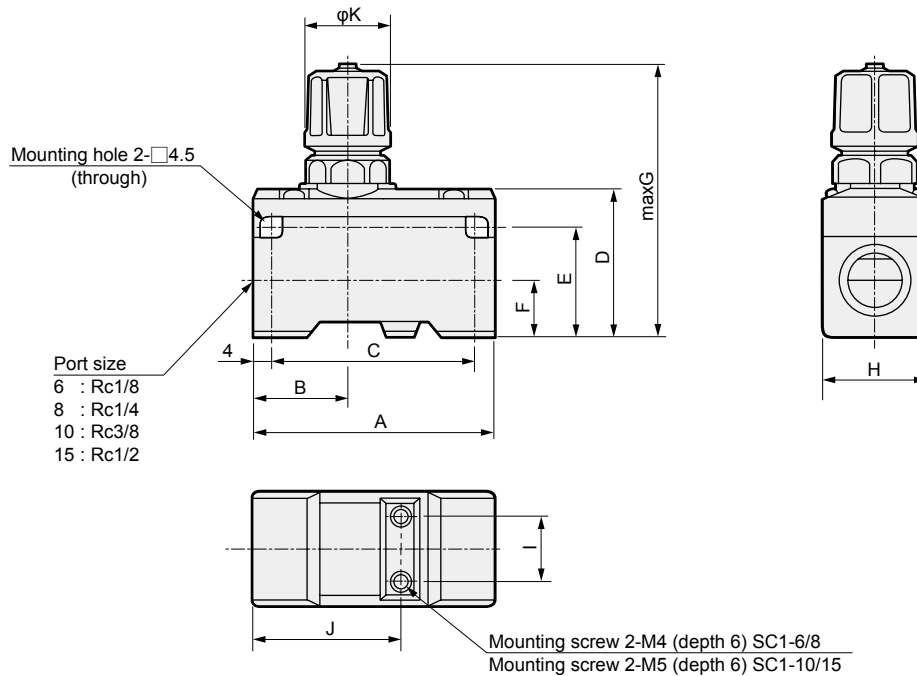
No.	Part name	Material
1	Needle	Copper alloy
2	E type snap ring	Steel
3	Knob	Zinc die-casting
4	Needle guide	Aluminum die-casting
5	Lock nut	Zinc die-casting
6	O-ring	Nitrile rubber (fluoro rubber)
7	Gasket	Nitrile rubber (fluoro rubber)
8	Body	Aluminum die-casting
9	Spring	Stainless steel
10	Valve seat	Copper alloy/nitrile rubber (copper alloy/fluoro rubber)

\*1: ( ) : Heat resistance/ozone-proof specifications

### Dimensions



#### ● SC1



Model No.	A	B	C	D	E	F	G	H	I	J	K
SC1-6/8	50	20	42	31	23	11	67	22	12	31	19
SC1-10/15	63	21	55	40	31	15	83	30	18	37	23

### ⚠ Safety precautions

- When operating in the low pressure range (0.05 MPa or less), or when the piping, etc., before and after the product are excessively constricted, note that vibrating sounds can be easily generated if the cylinder speed is rapid, or if the differential pressure is small.
- When tightening, do not tighten the needle or lock nut section excessively.  
(Tightening torque approx. 3 N·m)

- F.R.L
- F (Filtr)
- R (Reg)
- L (Lub)
- PresSW
- Shutoff
- SlowStart
- FimResistFR
- Oil-ProhR
- MedPresFR
- No Cu/ PTFE FRL
- Outdrs FR
- F.R.L (Related)
- CompFRL
- LgFRL
- PrecsR
- VacF/R
- Clean FR
- ElecPneuR
- AirBoost
- SpdContr
- Silncr
- CheckV/ other
- Jnt/tube
- AirUnt
- PrecsCompn
- Mech/ ElecPresSw
- ContactSW
- AirSens
- PresSW Cool
- AirFloSens/ Contr
- WaterRISens
- TotAirSys (Total Air)
- TotAirSys (Gamma)
- RefrDry
- DesicDry
- HiPolymDry
- MainFiltr
- Dischrg etc
- Ending