

F.R.L
F (Filtr)
R (Reg)
L (Lub)
PresSW
Shutoff
SlowStart
FimResistFR
Oil-ProhR
MedPresFR
No Cu/
PTFE FRL
Outdrs FR
F.R.L
(Related)
CompFRL
LgFRL
PrecsR
VacF/R
Clean FR
ElecPneur
AirBoost
SpdContr
Silncr
CheckV/
other
Jnt/tube
AirUnt
PresCompn
Mech/
ElecPresSw
ContactSW
AirSens
PresSW
Cool
AirFloSens/
Contr
WaterRtSens
TotAirSys
(Total Air)
TotAirSys
(Gamma)
RefrDry
DesicDry
HiPolymDry
MainFiltr
Dischrg
etc
Ending

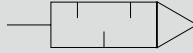


Silencer: Metal body

SL Series

● Port size: R1/4 to R2

JIS symbol



Features

- SL-8A to 25A has been upgraded, integrating the entire series in a lightweight/compact design.
 - Weight ratio (SL-8A to 25A) reduced by 50% or more compared to conventional CKD model
- The replaceable element extends product life.
- The product is eco-friendly.
 - Chromate treatment (hexavalent chromium) has been eliminated.
 - The coating has been eliminated.
 - Segregated disposal is possible.
- Noise reduction effect of 20 dB (A) or more

Specifications

| Descriptions | SL-8A | SL-10A | SL-15A | SL-20A | SL-25A | SL-32A | SL-40A | SL-50A |
|--|--|-------------|-------------|--------------|--------------|--------------|--------------|--------------|
| Working fluid | Compressed air | | | | | | | |
| Max. working pressure MPa | 0.9 (≈130 psi, 9 bar) | | | | | | | |
| Min. working pressure MPa | 0 (≈0 psi, 0 bar) | | | | | | | |
| Proof pressure MPa | 1.35 (≈200 psi, 13.5 bar) | | | | | | | |
| Fluid temperature °C | 5 (41°F) to 60 (140°F) (no freezing. *2) | | | | | | | |
| Ambient temperature °C | -10 (14°F) to 60 (140°F) (no freezing) | | | | | | | |
| Port size R | 1/4 | 3/8 | 1/2 | 3/4 | 1 | 1 1/4 | 1 1/2 | 2 |
| Weight g | 75 | 100 | 105 | 245 | 250 | 500 | 500 | 800 |
| Applicable cylinder tube size | φ50 to φ100 | φ63 to φ140 | φ75 to φ180 | φ100 to φ250 | φ140 to φ250 | φ140 to φ450 | φ140 to φ450 | φ300 to φ450 |
| Noise reduction effect dB [A] | 20 or more | | | | | | | |
| Flow rate *1 m ³ /min(ANR) | 2.4 | 3.2 | 4.1 | 12 | 14 | 17 | 17.5 | 33 |
| Effective cross-sectional area mm ² | 36 | 48 | 61 | 160 | 210 | 250 | 260 | 500 |

*1: Flow rate is the atmospheric pressure conversion value at pressure 0.5 MPa

*2: Freezing may occur due to adiabatic expansion depending on the air quality (dew point).

How to order

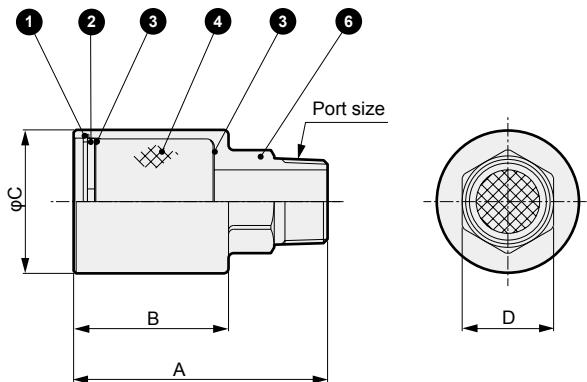
SL - 8A
● Replacement element
SL - 8A - EL

| A Port size | |
|-------------|--------|
| 8A | R1/4 |
| 10A | R3/8 |
| 15A | R1/2 |
| 20A | R3/4 |
| 25A | R1 |
| 32A | R1 1/4 |
| 40A | R1 1/2 |
| 50A | R2 |

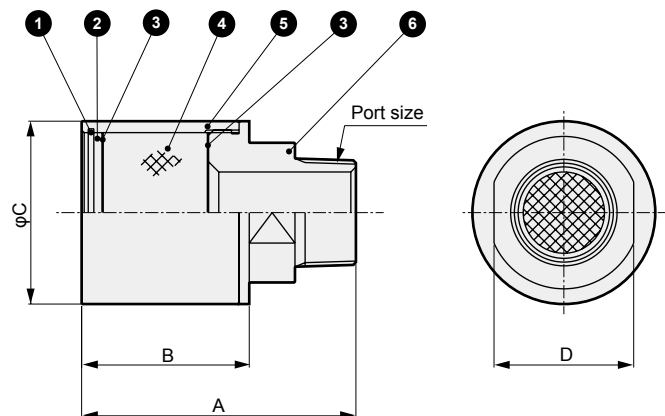
Dimensions/internal structure and main parts list



● SL-8A to 25A



● SL-32A to 50A



| Model No. | Port size | A | B | φC | D |
|-----------|-----------|------|------|----|----|
| SL-8A | R1/4 | 64 | 41 | 30 | 17 |
| SL-10A | R3/8 | 74.5 | 49.5 | 36 | 24 |
| SL-15A | R1/2 | 77.5 | 49.5 | 36 | 24 |
| SL-20A | R3/4 | 98 | 61 | 56 | 36 |
| SL-25A | R1 | 100 | 61 | 56 | 36 |
| SL-32A | R1¼ | 108 | 66 | 72 | 55 |
| SL-40A | R1½ | 108 | 66 | 72 | 55 |
| SL-50A | R2 | 120 | 70 | 89 | 70 |

| No. | Part name | Material |
|-----|------------------|---------------------------------|
| 1 | C type snap ring | Steel (8A to 25A) |
| | | Stainless steel (32A to 50A) |
| 2 | Perforated metal | Steel |
| 3 | Wire mesh | Stainless steel |
| 4 | Element | Vinylidene chloride (8A to 25A) |
| | | Urethane (32A to 50A) |
| 5 | Case | Aluminum alloy |
| 6 | Body | Aluminum alloy |

Safety precautions

- Tighten pipes with the appropriate torque.
- Check that the C type snap ring does not pop off when removed or attached.
- Assemble the C type snap ring accurately when replacing the element. Parts used inside could pop out and cause problems if assembly is not complete.
- Depending on work, the silencer could clog and reduce exhaust. Service the product by replacing the element regularly.
- Silencing values are based on JIS standards. Silencing could vary with the type of circuit and pressure used.

[Recommended tightening torque]

| Port thread | Tightening torque N·m |
|-------------|-----------------------|
| R1/4 | 6 to 8 |
| R3/8 | 13 to 15 |
| R1/2 | 16 to 18 |
| R3/4 | 19 to 40 |
| R1 | 41 to 70 |
| R1¼ | 43 to 75 |
| R1½ | 45 to 80 |
| R2 | 47 to 85 |

- F.R.L
- F (Filtr)
- R (Reg)
- L (Lub)
- PresSW
- Shutoff
- SlowStart
- FimResistFR
- Oil-ProhR
- MedPresFR
- No Cu/PTFE FRL
- Outdrs FR
- F.R.L (Related)
- CompFRL
- LgFRL
- PrecsR
- VacF/R
- Clean FR
- ElecPneuR
- AirBoost
- SpdContr
- Silncr
- CheckV/other
- Jnt/tube
- AirUnt
- PrecsCompn
- Mech/ElecPresSw
- ContactSW
- AirSens
- PresSW Cool
- AirFloSens/Contr
- WaterRtSens
- TotAirSys (Total Air)
- TotAirSys (Gamma)
- RefrDry
- DesicDry
- HiPolymDry
- MainFiltr
- Dischrg etc
- Ending