

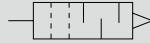


Exhaust cleaner FA Series

Exhaust noise and oil mist have been minimized.

● Port size: Rc3/8 to Rc2

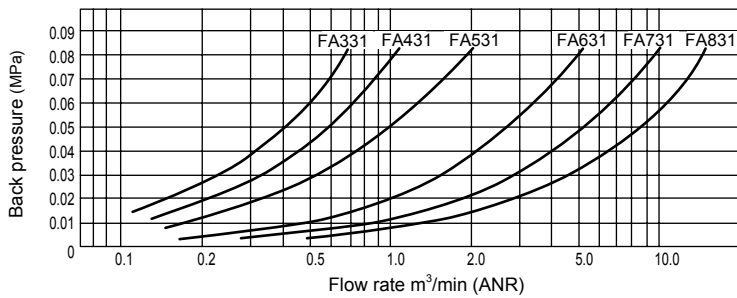
JIS symbol



Specifications

Descriptions	FA331-10A	FA431-15A	FA531-20A	FA631-25A	FA731-40A	FA831-50A
Port size Rc	3/8	1/2	3/4	1	1 1/2	2
Effective cross-sectional area mm ²	16	33	55	165	330	550
Max. processing flow rate m ³ /min(ANR)	0.3	0.6	1	3	6	10
Fluid temperature	5 (41°F) to 65 (149°F)°C (no freezing)					
Ambient temperature	0 (32°F) to 65 (149°F)°C (no freezing)					
Noise reduction effect	35 dB and over (at the max. processing flow rate in oil saturated state)					
Oil mist collection efficiency	99.9% and over					
Oil storage capacity cm ³	80	130	150	250	350	550
Weight kg	0.2	0.3	0.4	0.6	1.1	1.5
Bracket No. (option)	B351-10A	B451-15A	B551-20A	B651-25A	-	-

Flow characteristics

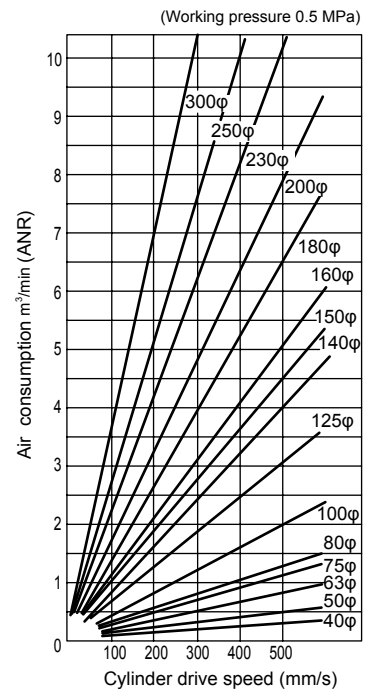


Selection guide

Select an exhaust cleaner based on the air consumption in the circuit being used.

- (1) Calculate the air consumption for the actuator being used.
- (2) Multiply the calculated air consumption by 1.4.
- (3) Select a model that has a processing flow rate exceeding the air consumption multiplied by 1.4.

The figure below shows the air consumption when multiplied by 1.4 for each air cylinder size. Use this graph to select a model.



How to order

FA **3** **31** - **10A** - **B**

Exhaust cleaner

A Series code

B Port size
*1

C Option
*2

Code	Content
A Series code	
3	Compact
4	Standard
5	Large
6	Large
7	Large bore size
8	Large bore size

B Port size		Series	3	4	5	6	7	8
10A	Rc3/8		●					
15A	Rc1/2			●				
20A	Rc3/4				●			
25A	Rc1					●		
40A	Rc1 1/2						●	
50A	Rc2							●

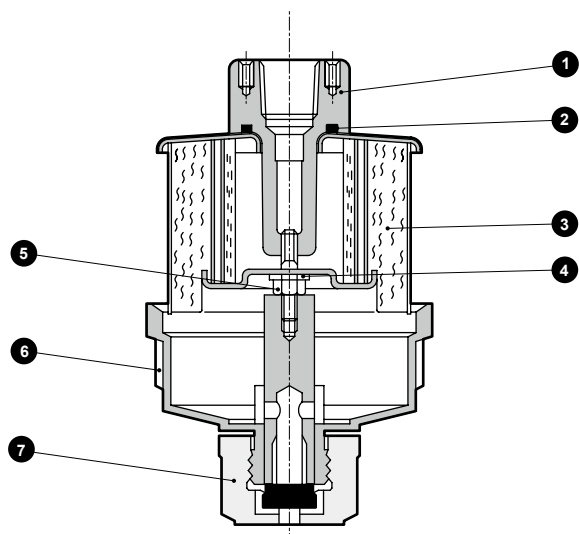
C Option		Series	3	4	5	6	7	8
Blank	Not attached		●	●	●	●	●	●
B	Bracket		●	●	●	●		

⚠ Precautions for model No. selection

*1: If port size NPT thread is required, do not indicate nominal size A. (Example) FA431-15

*2: Bracket option is not available for FA731 and FA831.

Internal structure and parts list



No.	Part name	Material				
		FA331	FA431	FA531	FA631	FA731
1	Adaptor assembly	Aluminum alloy die-casting, steel			Aluminum alloy casting, steel	
2	O-ring	Nitrile rubber				
3	Element assembly	Aluminum alloy, steel, glass fiber				
4	Gasket	Polyacetal resin				
5	Nut	Steel				
6	Case assembly	Polycarbonate resin, aluminum alloy				
7	Drain cock assembly	Nitrile rubber, polyamide resin				

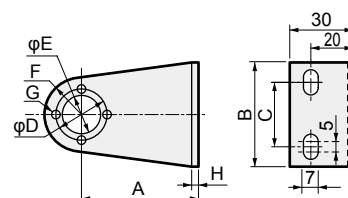
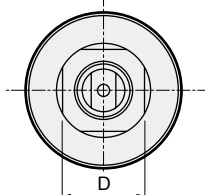
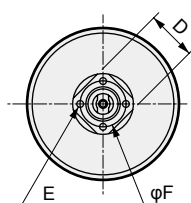
Dimensions



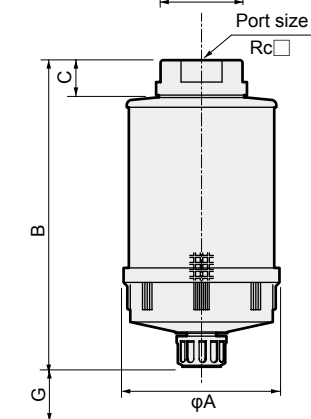
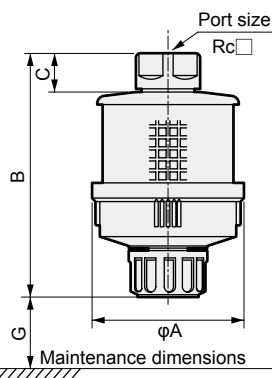
● FA331 to FA631

● FA731 to FA831

● Bracket (option)



Note) Four screws for mounting the body are attached.

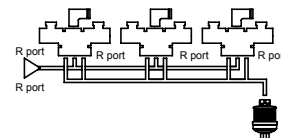


Model No.	A	B	C	D	E	F	G	H	Wt. kg
B351-10A	55	50	30	24	φ18	R16.5	4-φ3.5	2.3t	0.07
B451-15A	60	60	40	32	φ23	R20	4-φ4.5	2.3t	0.09
B551-20A	70	70	40	40	φ29	R25.4	4-φ4.5	3.2t	0.16
B651-25A	80	70	40	48	φ37	R27.5	4-φ4.5	3.2t	0.18

Common piping method

When many valves are used in one place, common piping method is recommended.

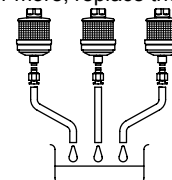
- Easy maintenance control
- Low cost



Model No.	FA331	FA431	FA531	FA631	FA731	FA831
A	80	90	100	112	132	150
B	129	147	171	201	258	311
C	20	23	25	28	32	36
D	27	32	41	46	70	80
E	4-M3 (depth 7)	4-M4 (depth 8)	4-M4 (depth 8)	4-M4 (depth 10)	-	-
F	24	32	40	48	-	-
G	80	100	100	100	200	250
Port size	Rc ³ / ₈	Rc ¹ / ₂	Rc ³ / ₄	Rc1	Rc1 ¹ / ₂	Rc2

⚠ Safety precautions

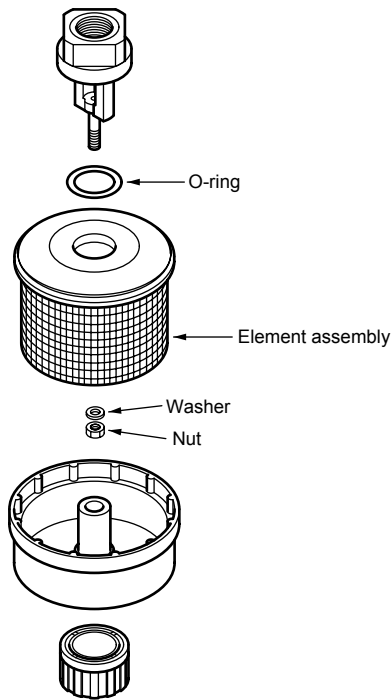
- 1 Drain the oil accumulated inside the case by opening the drain cock before the oil level reaches the element.
- 2 To connect a drain tube to the case, follow the following steps.
 - (1) Remove the drain cock.
 - (2) Screw in the R 1/8 male half union and connect the resin tube.
 - (3) Hold the adaptor assembly and screw in, taking care not to apply load to the case.
 - (4) If the back pressure increases to 0.1 MPa or more, replace the element assembly.



F.R.L
F (Filtr)
R (Reg)
L (Lub)
PresSW
Shutoff
SlowStart
FmResistFR
Oil-ProhR
MedPresFR
No Cu/
PTFE FRL
Outdrs FR
F.R.L
(Related)
CompFRL
LgFRL
PrescR
VacF/R
Clean FR
ElecPneuR
AirBoost
SpdContr
Silncr
CheckV/
other
Jnt/tube
AirUnt
PresCompn
Mech/
ElecPresSw
ContactSW
AirSens
PresSW
Cool
AirFloSens/
Contr
WaterRiSens
TotAirSys
(Total Air)
TotAirSys
(Gamma)
RefrDry
DesicDry
HiPolymDry
MainFiltr
Dischrg
etc
Ending

Exhaust cleaner optional parts diagram

Exhaust cleaner optional parts diagram



- F.R.L
- F (Filtr)
- R (Reg)
- L (Lub)
- PresSW
- Shutoff
- SlowStart
- FimResistFR
- Oil-ProhR
- MedPresFR
- No Cu/
PTFE FRL
- Outdrs FR
- F.R.L
(Related)
- CompFRL
- LgFRL
- PrecsR
- VacF/R
- Clean FR
- ElecPneuR
- AirBoost
- SpdContr
- Silncr**
- CheckV/
other
- Jnt/tube
- AirUnt
- PrecsCompn
- Mech/
ElecPresSw
- ContactSW
- AirSens
- PresSW
Cool
- AirFloSens/
Contr
- WaterRtSens
- TotAirSys
(Total Air)
- TotAirSys
(Gamma)
- RefrDry
- DesicDry
- HiPolymDry
- MainFiltr
- Dischrg
etc
- Ending

Element kit (Element assembly, O-ring, washer and nut set)

Model	Element kit model No.
FA331-10A	FA331-ELEMENT
FA431-15A	FA431-ELEMENT
FA531-20A	FA531-ELEMENT
FA631-25A	FA631-ELEMENT
FA731-40A	FA731-ELEMENT
FA831-50A	FA831-ELEMENT