

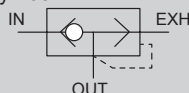


Quick exhaust valve with push-in fitting

QEL Series

● Piping bore size: $\varnothing 4$, $\varnothing 6$

JIS symbol



Features

- Compact, space saving
Inline has $\varnothing 4/\varnothing 6$ push-in fittings built in
Atmosphere release type and type with exhaust port fitting are available
Plugs can be attached directly to the actuator as an effective countermeasure for condensation due to adiabatic expansion
- Standard ozone-resistant materials
Ozone-proof materials for degradation prevention are used as standard for the valving element
- Ecological products
All substances which adversely affect the global environment have been eliminated from the materials
RoHS2 Directive compliant product

Specifications

Model No.			QEL-H44	QEL-H44-S	QEL-44P-S	QEL-H66	QEL-H66-S	QEL-66P-S
Descriptions								
Working fluid			Compressed air					
Max. working pressure		MPa	0.7					
Min. working pressure		MPa	0.1					
Min. working pressure		MPa	0.05					
Proof pressure (normal temperature)		MPa	1.35					
Operating ambient temperature °C			5 to 60 (no freezing)					
Port size	IN		ø4	ø4	ø4	ø6	ø6	ø6
	OUT		ø4	ø4	ø4 plug	ø6	ø6	ø6 plug
	EXH		ø4	Atmospheric release	Atmospheric release	ø6	Atmospheric release	Atmospheric release
Product weight		g	5.2	3.3	2.3	7.6	4.9	3.9
Mounting orientation			Unrestricted					
Effective cross-sectional area	IN→OUT	mm ²	1.8		1.5	4		3
	OUT→EXH	mm ²	1.8		1.5	4		3

How to order



Model No.

A Port size

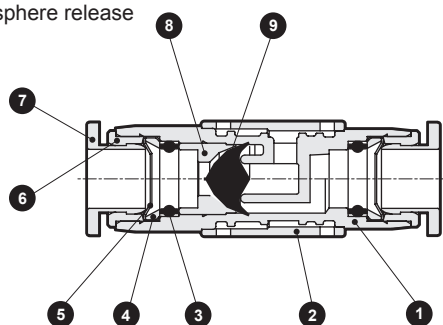
B Option

Code	Content
A Port size	
H44	$\varnothing 4$
H66	$\varnothing 6$
44P	$\varnothing 4$ plug
66P	$\varnothing 6$ plug
B Option	
Blank	With exhaust port fitting
S	Atmosphere release

*1: When A is "44P" or "66P", B "Blank" cannot be selected.

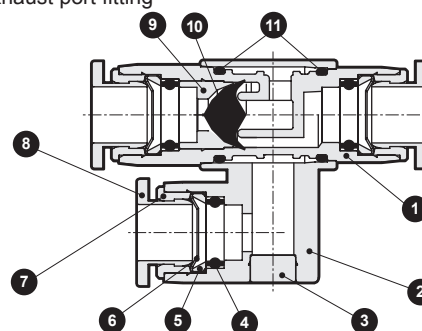
Internal structure and parts list

● Atmosphere release



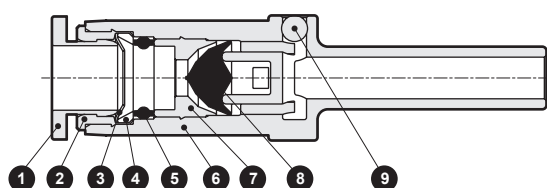
No.	Part name	Material
1	Resin body	Polybutylene terephthalate
2	Exhaust cover	Polybutylene terephthalate
3	Elastic sleeve	Nitrile rubber
4	Lock claw	Copper alloy (with electroless nickeling)
5	Lock ring	Stainless steel
6	Guide ring	Copper alloy (with electroless nickeling)
7	Release ring	Acetal resin
8	Valving element stopper	Copper alloy (with electroless nickeling)
9	Valve body	Hydrogenated nitrile rubber

● With exhaust port fitting



No.	Part name	Material
1	Resin body	Polybutylene terephthalate
2	Exhaust fitting body	Polybutylene terephthalate
3	Plug	Copper alloy (with electroless nickeling)
4	Elastic sleeve	Nitrile rubber
5	Lock claw	Copper alloy (with electroless nickeling)
6	Lock ring	Stainless steel
7	Guide ring	Copper alloy (with electroless nickeling)
8	Release ring	Acetal resin
9	Valving element stopper	Copper alloy (with electroless nickeling)
10	Valve body	Hydrogenated nitrile rubber
11	O-ring	Nitrile rubber

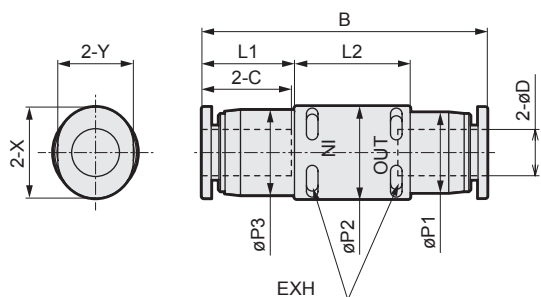
● Plug



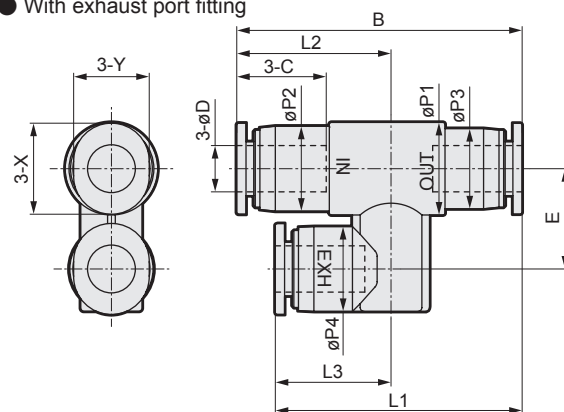
No.	Part name	Material
1	Release ring	Acetal resin
2	Guide ring	Copper alloy (with electroless nickeling)
3	Lock claw	Stainless steel
4	Lock ring	Copper alloy (with electroless nickeling)
5	Elastic sleeve	Nitrile rubber
6	Resin body	Polybutylene terephthalate
7	Valve body holder	Aluminum
8	Valve body	Hydrogenated nitrile rubber
9	Steel ball	Stainless steel



● Atmosphere release

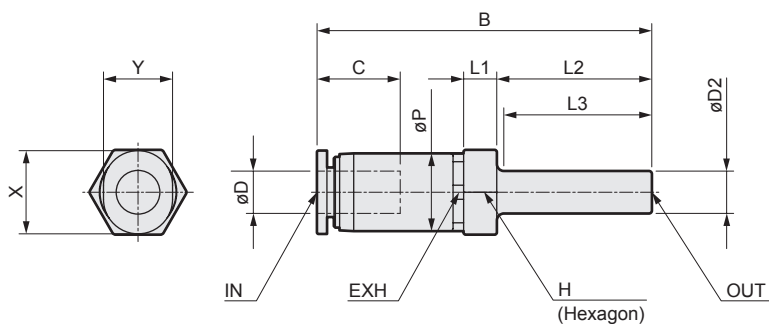


● With exhaust port fitting



Code	øD	B	L1	L2	L3	øP1	øP2	øP3	øP4	C	E	X	Y
Model No.	Compatible tube O.D.												
QEL-H44	ø4	35.2	30.5	18.8	14.1	10	9	8.4	9	11.3	11	9.8	7.8
QEL-H66	ø6	37.4	32.4	20.2	15.2	12	11	10.4	11	11.8	13	11.8	9.8
QEL-H44-S	ø4	35.2	11.3	15	-	8.4	10	9	-	11.3	-	9.8	7.8
QEL-H66-S	ø6	37.4	12.2	15	-	10.4	12	11	-	11.8	-	11.8	9.8

● Plug



Code	øD1	øD2	B	L1	L2	L3	øP	C	H	X	Y
Model No.	Compatible tube O.D.	Fitting port size							(Hexagon)		
QEL-44P-S	ø4	ø4	41.3	4.1	19	18.2	9	11.3	10	9.8	7.8
QEL-66P-S	ø6	ø6	47.5	4.7	22	21	11	11.8	12	11.8	9.8