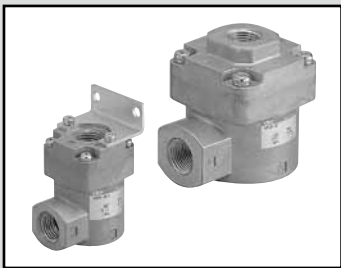


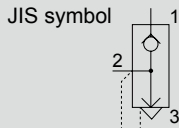
F.R.L
 F (Filtr)
 R (Reg)
 L (Lub)
 PresSW
 Shutoff
 SlowStart
 FilmResistFR
 Oil-ProhR
 MedPresFR
 No Cu/
 PTFE FRL
 Outdrs FR
 F.R.L
 (Related)
 CompFRL
 LgFRL
 PrecsR
 VacF/R
 Clean FR
 ElecPneuR
 AirBoost
 SpdContr
 Silncr
 CheckV/
 other
 Jnt/tube
 AirUnt
 PresCompn
 Mech/
 ElecPresSw
 ContactSW
 AirSens
 PresSW
 Cool
 AirFloSens/
 Contr
 WaterRtSens
 TotAirSys
 (Total Air)
 TotAirSys
 (Gamma)
 RefrDry
 DesicDry
 HiPolymDry
 MainFiltr
 Dischrg
 etc
 Ending



Quick exhaust valve

QEV2 Series

● Port size: Rc1/8 to Rc1



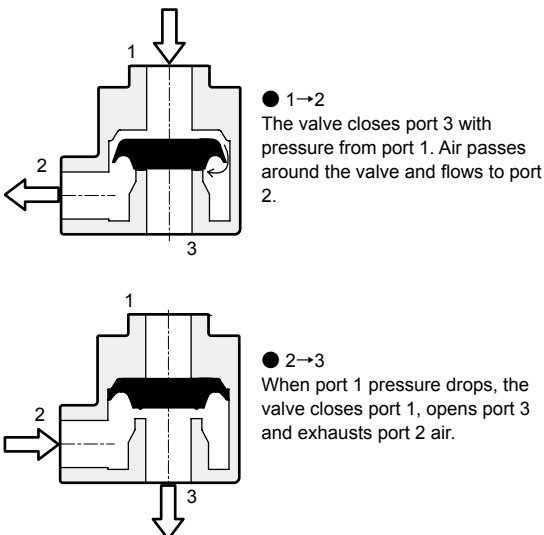
Features

- Large flow rate design realizing outstanding exhaust
- Variety of bore sizes available
Series includes piping bore sizes Rc1/8 to Rc1.
- Wide range of options
 - Fluoro rubber specifications available as options
 - Mounting bracket available (small bore)
- Eco-friendly product
 - Eco-friendly design is free of lead and hexavalent chrome
 - Paint-free
 - Waste sorting is simplified

Specifications

Model No.	QEV2-6	QEV2-8	QEV2-10	QEV2-15	QEV2-20	QEV2-25	
Descriptions							
Working fluid	Compressed air						
Max. working pressure MPa	1.0 (≈150 psi, 10 bar)						
Min. working pressure MPa	0.05 (≈7.3 psi, 0.5 bar)						
Proof pressure MPa	1.5 (≈220 psi, 15 bar)						
Fluid temperature °C	5 (41°F) to 60 (140°F)						
Ambient temperature °C	0 (32°F) to 60 (140°F) (no freezing)						
Port size	1, 2	1/8	1/4	3/8	1/2	3/4	1
	Rc 3	1/4	1/4	1/2	1/2	1	1
Weight g	80	78	250	250	710	660	
Mounting bracket weight g	15			-			
Mounting orientation	Unrestricted						
Eff. X-sectional area mm ²	1→2	25	35	90	105	205	275
	2→3	30	40	100	115	280	330

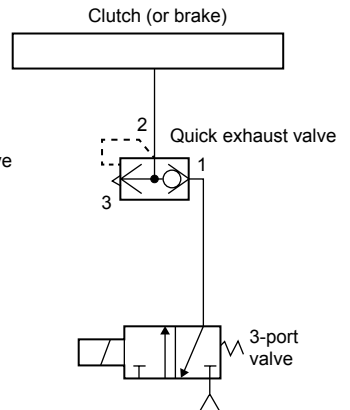
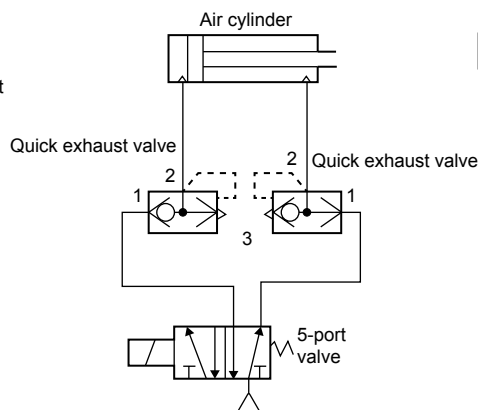
Operational explanation



Applications

(1) Use to increase exhaust speed of air cylinder.

(2) Use to increase exhaust speed of clutch (or brake)



How to order

- Quick exhaust valve

QEV2 - 6 - A P

Model No.

A Port size

B Option

C Accessory

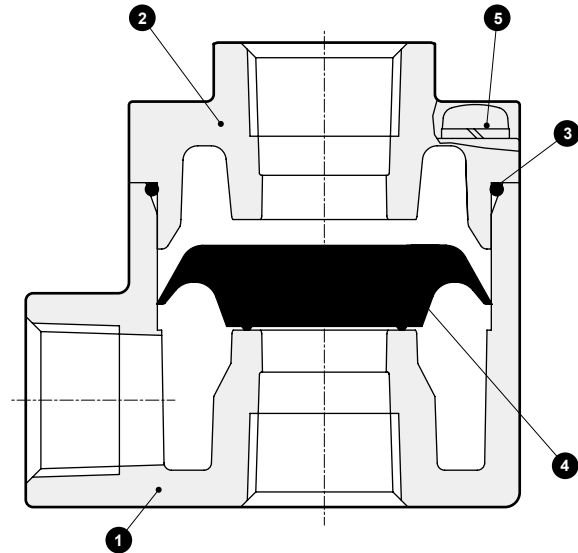
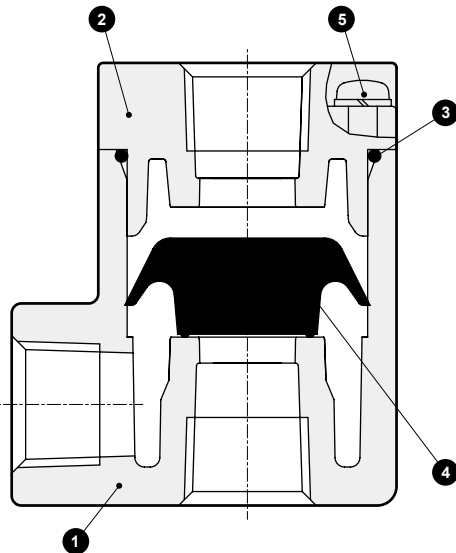
Code	Content
A Port size	
6	Rc 1/8
8	Rc 1/4
10	Rc 3/8
15	Rc 1/2
20	Rc 3/4
25	Rc 1
B Option	
Blank	No option
A	Fluoro rubber specifications
C Accessory	
Blank	None
P	Mounting bracket attached

*1: Mounting bracket is available for QEV2-6 and QEV2-8 only.

Internal structure and parts list

- QEV2-6/8

- QEV2-10/15/20/25



No.	Part name	Material
1	Body	Aluminum die-casting
2	Plug	Aluminum die-casting
3	O-ring	Nitrile rubber (fluoro rubber)
4	Valve	Hydrogenated nitrile rubber (fluoro rubber)
5	Cross-recessed pan head machine screw with switch	Stainless steel

* Materials shown in () are for option "A" (fluoro rubber specifications).

- F.R.L
- F (Filtr)
- R (Reg)
- L (Lub)
- PresSW
- Shutoff
- SlowStart
- FimResistFR
- Oil-ProhR
- MedPresFR
- No Cu/
PTFE FRL
- Outdrs FR
- F.R.L
(Related)
- CompFRL
- LgFRL
- PrecsR
- VacF/R
- Clean FR
- ElecPneuR
- AirBoost
- SpdContr
- Silncr
- CheckV/
other
- Jnt/tube
- AirUnt
- PrecsCompn
- Mech/
ElecPresSw
- ContactSW
- AirSens
- PresSW
Cool
- AirFloSens/
Contr
- WaterRISens
- TotAirSys
(Total Air)
- TotAirSys
(Gamma)
- RefrDry
- DesicDry
- HiPolymDry
- MainFiltr
- Dischrg
etc
- Ending

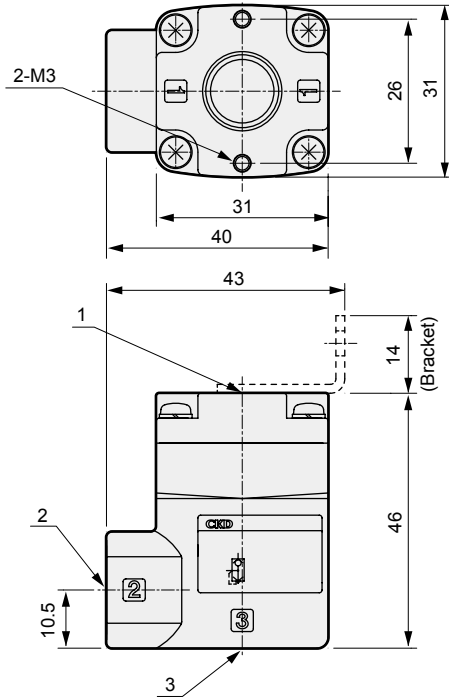
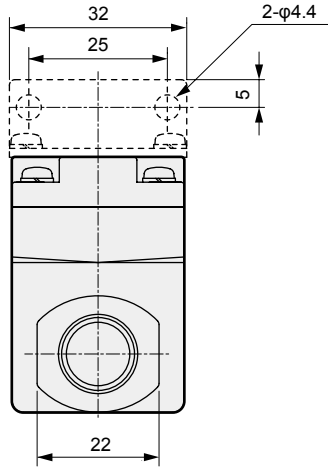
QEV2 Series



Dimensions

- F.R.L
- F (Filtr)
- R (Reg)
- L (Lub)
- PresSW
- Shutoff
- SlowStart
- FimResistFR
- Oil-ProhR
- MedPresFR
- No Cu/PTFE FRL
- Outdrs FR
- F.R.L (Related)
- CompFRL
- LgFRL
- PrecsR
- VacF/R
- Clean FR
- ElecPneuR
- AirBoost
- SpdContr
- Silncr
- CheckV/other
- Jnt/tube
- AirUnt
- PrecsCompn
- Mech/ElecPresSw
- ContactSW
- AirSens
- PresSW Cool
- AirFloSens/Contr
- WaterRtSens
- TotAirSys (Total Air)
- TotAirSys (Gamma)
- RefrDry
- DesicDry
- HiPolymDry
- MainFiltr
- Dischrg etc
- Ending

● QEV2-6/8

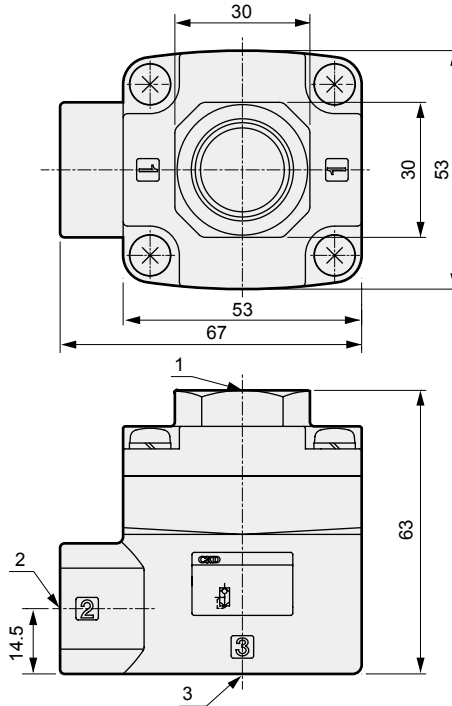
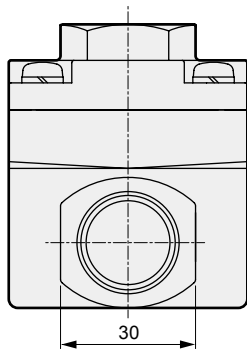


[Piping port indication]

Model No.	Port position		
	1	2	3
QEV2-6	Rc 1/8		Rc 1/4
QEV2-8	Rc 1/4		

Port code	Content
1	IN (Input)
2	OUT (Output)
3	EXH (Exhaust)

● QEV2-10/15



[Piping port indication]

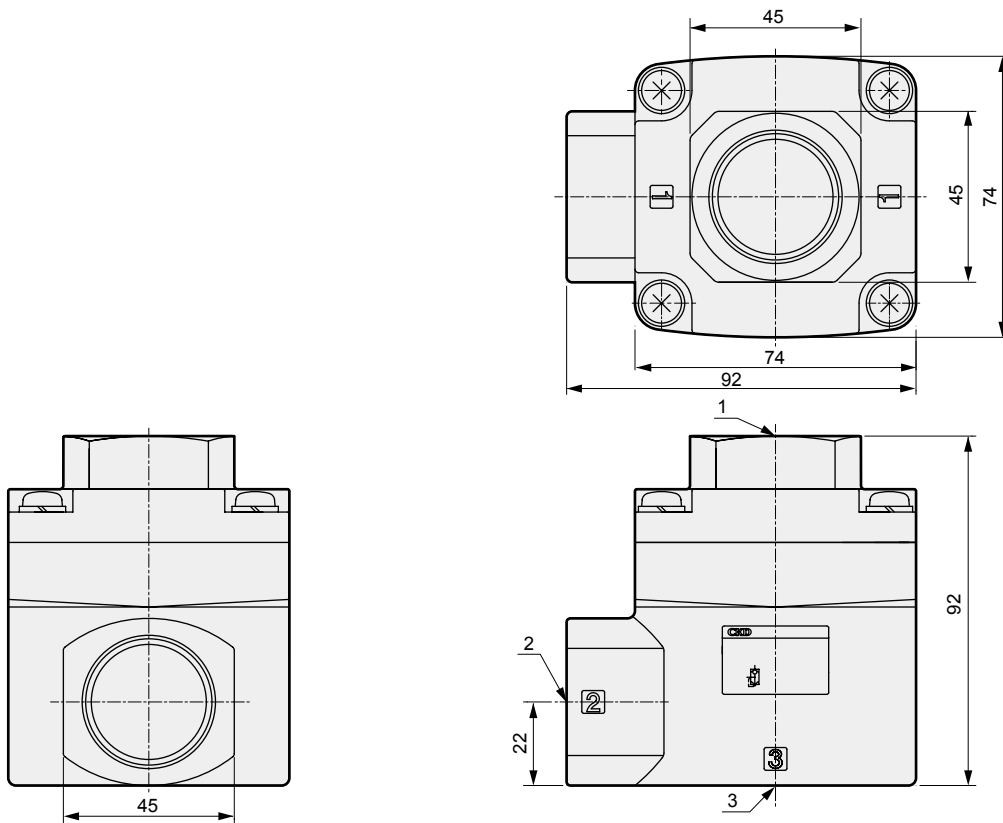
Model No.	Port position		
	1	2	3
QEV2-10	Rc 3/8		Rc 1/2
QEV2-15	Rc 1/2		

Port code	Content
1	IN (Input)
2	OUT (Output)
3	EXH (Exhaust)

Dimensions



● QEV2-20/25



Model No.	Port position		
	1	2	3
QEV2-20	Rc 3/4		Rc 1
QEV2-25	Rc 1		

[Piping port indication]

Port code	Content
1	IN (Input)
2	OUT (Output)
3	EXH (Exhaust)

⚠ Safety precautions

■ Design/selection

- This valve cannot be used as a stop valve that requires no leakage. Slight leakage is allowed for in this product's specifications.
- In the following cases, vibration may cause malfunctions or abnormal noise.
 - When (IN) port 1 piping is extremely narrow and long or when the directional switching valve's orifice is small, generating residual or back pressure on the port 1 side.
 - When differential pressure of (IN) port 1 and (OUT) port 2 is lower than min. working pressure (0.05 MPa).
 - When the 2 (OUT) port side piping diameter is extremely restricted.

■ Mounting, installation and adjustment

- Apply the recommended tightening torque when connecting pipes.
 - The purpose is to prevent air leakage and damage to bolts.
 - First, tighten the bolts by hand to ensure that the threads are not damaged, then use a tool.
 - Do not tighten while pressure is applied.
- Install a pneumatic filter just before the pneumatic component in the circuit.

■ Use/maintenance

- Stop air flow and confirm that there is no residual pressure before replacing the tube.

[Recommended tightening torque]

	Tightening torque N·m
Rc 1/8	3 to 5
Rc 1/4	6 to 8
Rc 3/8	13 to 15
Rc 1/2	16 to 18
Rc 3/4	19 to 40
Rc 1	41 to 70

- F.R.L
- F (Filtr)
- R (Reg)
- L (Lub)
- PresSW
- Shutoff
- SlowStart
- FimResistFR
- Oil-ProhR
- MedPresFR
- No Cu/PTFE FRL
- Outdrs FR
- F.R.L (Related)
- CompFRL
- LgFRL
- PrecsR
- VacF/R
- Clean FR
- ElecPneuR
- AirBoost
- SpdContr
- Silncr**
- CheckV/other
- Jnt/tube
- AirUnt
- PrecsCompn
- Mech/ElecPresSw
- ContactSW
- AirSens
- PresSW Cool
- AirFloSens/Contr
- WaterRtSens
- TotAirSys (Total Air)
- TotAirSys (Gamma)
- RefrDry
- DesicDry
- HiPolymDry
- MainFiltr
- Dischrg etc
- Ending