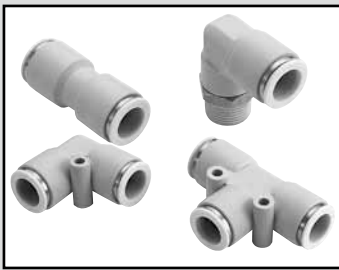


F.R.L
F (Filtr)
R (Reg)
L (Lub)
PresSW
Shutoff
SlowStart
FimResistFR
Oil-Prohr
MedPresFR
No Cu/
PTFE FRL
Outdrs FR
F.R.L
(Related)
CompFRL
LgFRL
PrecsR
VacF/R
Clean FR
ElecPneur
AirBoost
SpdContr
Silncr
CheckV/
other
Jnt/tube
AirUnt
PrecsCompn
Mech/
ElecPresSw
ContactSW
AirSens
PresSW
Cool
AirFloSens/
Contr
WaterRtSens
TotAirSys
(Total Air)
TotAirSys
(Gamma)
RefrDry
DesicDry
HiPolymDry
MainFiltr
Dischrg
etc
Ending



Fitting, stainless steel series

ZW Series

- Port size: M5 to R1/2
- Compatible tube: $\phi 4$ to $\phi 12$



Specifications

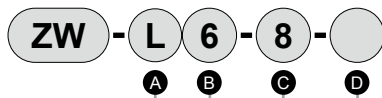
Descriptions	ZW
Working fluid	Compressed air
Max. working pressure MPa	1.0 (≈ 150 psi, 10 bar)
Negative pressure kPa	-100 (≈ -15 psi, -1 bar) *2
Ambient temperature °C	-10 (14°F) to 60 (140°F) (no freezing)
Tube used	Soft nylon tube (F-15**)
	Urethane tube (U-92**, U-95**, NU-**) *1

*1: Refer to page 814 for tube dimensions, ambient temperature and working pressure.

*2: Use an insert ring when using urethane tube (U-92**, U-95**, NU-**) under vacuum pressure.
(This is a customized order. Contact CKD for details.)

How to order

* Refer to the model No. on the dimensions page (page 759) for the model No. combination.



A Shape		B Compatible tube O.D.		C Port size		D Option	
S	Straight	4	$\phi 4$	M5	M5 \times 0.8	Blank	None
L	Elbow	6	$\phi 6$	6	R1/8	P11	Ozone-proof product
T	Tee	8	$\phi 8$	8	R1/4		
		10	$\phi 10$	10	R3/8		
		12	$\phi 12$	15	R1/2		
				0	No thread		

Note: Sales unit is 1 pc.

Clean-room specifications (Catalog No. CB-033SA)

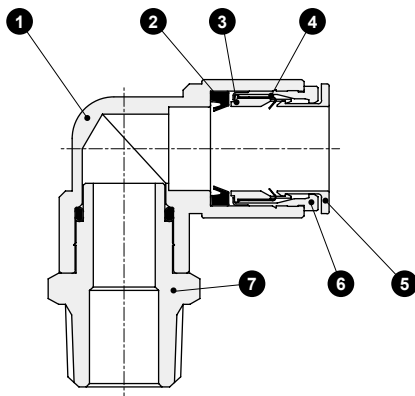
Specifications for rechargeable battery (Catalog No. CC-1226A)

ZW-.....- P80

- Structure compatible with rechargeable battery manufacturing process

ZW-.....- P4

Internal structure and main parts list



No.	Name	Material
1	Body *1	Stainless steel (SUS304) Polybutylene terephthalate (flame-resistant resin *2)
2	Packing	Nitrile rubber
3	Chuck holder	Polyacetal
4	Chuck	Stainless steel (SUS301)
5	Push ring *3	Polybutylene terephthalate (flame-resistant resin *2)
6	Outer ring	Stainless steel (SUS304)
7	Drive-in nipple	Stainless steel (SUS304)

*1: The single straight body is stainless steel (SUS304).

*2: Equivalent to UL94 standards V-0

*3: Standard push ring color: pure white, P80: light blue, P4: pure white.

*4: For the stainless steel series, the 5 push ring color is identified with pure white.

*5: P4 materials differ from the above.

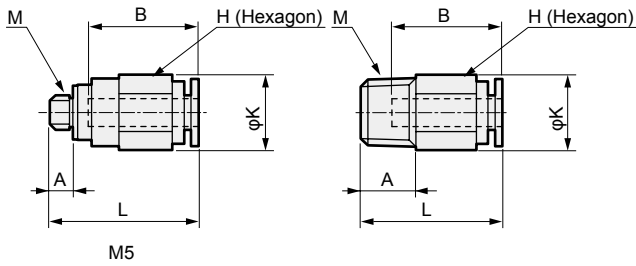
Mainly, stainless steel of 1 6 7 is SUS303.

Refer to Catalog No. CC-1012A for other details.

Dimensions

Single straight

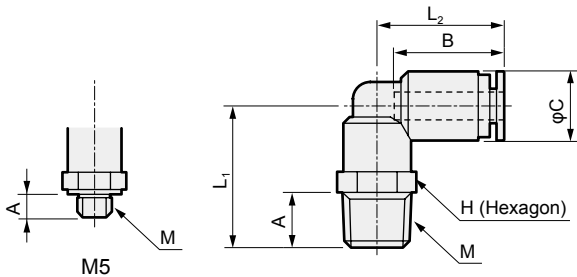
● ZW-S□-□



Model No.	Tube O.D. φ	M	H	K	L	A	B	Min. bore size	Eff. X-sectional area mm ²	Wt. g
ZW-S 4-M5	4	M5×0.8	10	11	21.5	4	16	2.5	4	6.7
ZW-S 4- 6		R1/8	10	11	20.5	8	16	2.5	4	7.8
ZW-S 4- 8		R1/4	14	15	19.5	11	16	2.5	4	15
ZW-S 6-M5	6	M5×0.8	12	13	23	4	17.5	2.5	4.4	8.6
ZW-S 6- 6		R1/8	12	13	23	8	17.5	4	10.3	9.5
ZW-S 6- 8		R1/4	14	15	23.5	11	17.5	4	10.3	17
ZW-S 6-10	6	R3/8	17	19.6	21.5	12	17.5	4	10.3	26
ZW-S 8- 6		R1/8	14	15.8	28	8	19	5	17.5	16
ZW-S 8- 8		R1/4	14	15.8	27	11	19	6	22.4	17
ZW-S 8-10	8	R3/8	17	19.6	22.5	12	19	6	22.4	23
ZW-S10- 8		R1/4	17	19.6	32.5	11	21.5	8	30.5	26
ZW-S10-10		R3/8	17	19.6	28.5	12	21.5	8	30.5	26
ZW-S10-15	10	R1/2	22	24	26.5	15	21.5	8	30.5	46
ZW-S12-10		R3/8	19	21	30.5	12	23	10	40	29
ZW-S12-15		R1/2	22	24	29.5	15	23	10	40	47

Single elbow

● ZW-L□-□

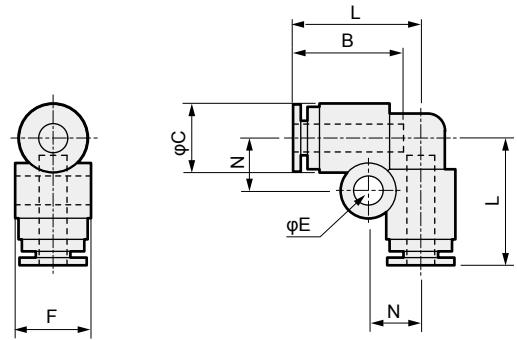


Model No.	Tube O.D. φ	M	H	L ₁	L ₂	A	B	C	Min. bore size	Eff. X-sectional area mm ²	Wt. g
ZW-L 4-M5	4	M5×0.8	8	15	18	4	16	10	2.5	3.2	4.9
ZW-L 4- 6		R1/8	10	20.5	18.5	8	16	10	2.5	3.2	8
ZW-L 4- 8		R1/4	14	24	18.5	11	16	10	2.5	3.2	15
ZW-L 6-M5	6	M5×0.8	10	15	20	4	17.5	12.5	2.5	4.2	6.8
ZW-L 6- 6		R1/8	12	24	21	8	17.5	12.5	4	8	13
ZW-L 6- 8		R1/4	14	27.5	21	11	17.5	12.5	4	8	17
ZW-L 6-10	6	R3/8	17	29	21	12	17.5	12.5	4	8	25
ZW-L 8- 6		R1/8	14	25.5	23.5	8	19	14.5	6	18	16
ZW-L 8- 8		R1/4	14	28.5	23.5	11	19	14.5	6	18	19
ZW-L 8-10	8	R3/8	17	30	23.5	12	19	14.5	6	18	27
ZW-L10- 8		R1/4	17	31	27	11	21.5	17.5	8	27	27
ZW-L10-10		R3/8	17	32.5	27	12	21.5	17.5	8	27	32
ZW-L10-15	10	R1/2	22	35.5	27	15	21.5	17.5	8	27	46
ZW-L12-10		R3/8	19	34.5	29.5	12	23	20	9	35	40
ZW-L12-15		R1/2	22	37.5	29.5	15	23	20	9	35.5	52

Elbow

● ZW-L□-□-0

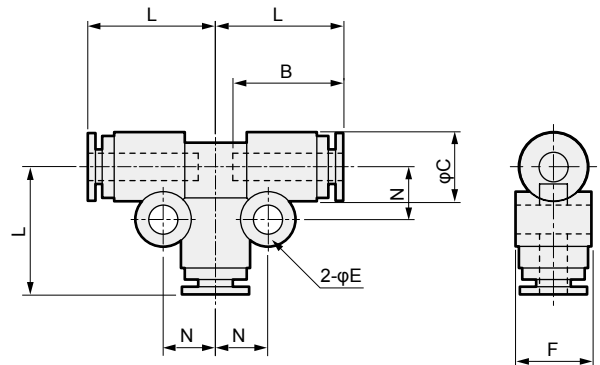
[Sales unit is 1 pc./bag]



Model No.	Tube O.D. φ	L	B	C	N	E	F	Min. bore size	Eff. X-sectional area mm ²	Wt. g
ZW-L 4-0	4	18.5	16	10	7.5	4.2	11	2.5	3	5.2
ZW-L 6-0	6	21	17.5	12.5	8.5	4.2	13.5	4	7.5	7.7
ZW-L 8-0	8	23.5	19	14.5	9.5	4.2	15.5	6	17	9.5
ZW-L10-0	10	27	21.5	17.5	11	4.2	18.5	8	25.5	16
ZW-L12-0	12	29.5	23	20	12	4.2	21	10	34	20

Tee

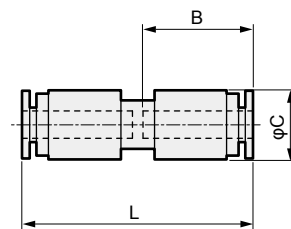
● ZW-T□-0



Model No.	Tube O.D. φ	L	B	C	E	F	N	Min. bore size	Eff. X-sectional area mm ²	Wt. g
ZW-T 4-0	4	18.5	16	10	4.2	11	7.5	2.5	3.6	8.2
ZW-T 6-0	6	21	17.5	12.5	4.2	13.5	8.5	4	9.7	12
ZW-T 8-0	8	23.5	19	14.5	4.2	15.5	9.5	6	22	15
ZW-T10-0	10	27	21.5	17.5	4.2	18.5	11	8	30	23
ZW-T12-0	12	29.5	23	20	4.2	21	12	10	35.5	29

Straight

● ZW-S□-0



Model No.	Tube O.D. φ	L	B	C	Min. bore size	Eff. X-sectional area mm ²	Wt. g
ZW-S 4-0	4	33.5	16	10	2.5	4	4.5
ZW-S 6-0	6	36.5	17.5	12.5	4	10	6.9
ZW-S 8-0	8	39.5	19	14.5	6	22	8
ZW-S10-0	10	45	21.5	17.5	8	30	14
ZW-S12-0	12	47.5	23	20	10	35	17

F.R.L
F (Filtr)
R (Reg)
L (Lub)
PresSW
Shutoff
SlowStart
FimResistFR
Oil-ProhR
MedPresFR
No Cu/ PTFE FRL
Outdrs FR
F.R.L (Related)
CompFRL
LgFRL
PrecsR
VacF/R
Clean FR
ElecPneuR
AirBoost
SpdContr
Silncr
CheckV/ other
Jnt/tube
AirUnt
PrecsCompn
Mech/ ElecPresSw
ContactSW
AirSens
PresSW Cool
AirFloSens/ Contr
WaterRISens
TotAirSys (Total Air)
TotAirSys (Gamma)
RefrDry
DesicDry
HiPolymDry
MainFiltr
Dischrg etc
Ending