

CKD

Portable Air Supply Unit
ASU-S-C6-1

Air supply wherever and whenever I need it.

PORTABLE AIR SUPPLY UNIT

CKD Corporation

CC-1363A

For locations where air could not be supplied before.

Easily access compressed air by carrying it to places without an air source.



Event venues

Laboratories

Conference rooms



Compact all-in-one air supply.

Easy access to compressed air whenever and wherever you need it.

Easy to carry

The entire unit is the size of a suitcase, making it easy for anyone to carry.



Supplies clean air

Heated air from the pump is cooled with an after-cooler. The compressed air is then filtered of impurities and water vapor.

Durable for continuous use

Internal pump is surrounded by heat-resistant materials, preventing excessive heat caused by continuous use.



Bowl
Sight window allows viewing of oil storage capacity. Bowl and drain cock can be easily removed.

* Before removing the bowl, always cut off power to the pump and discharge residual pressure in the tank beforehand.



Pressure sensor
Provides precision and stability over a wide pressure range.

Pump intake filter
Clogging is easy to confirm, and replacement is simple.

Specifications

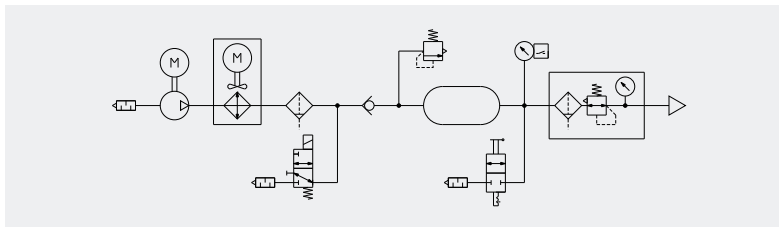
Descriptions	ASU-S-C6-1
Rated pressure	0.4 MPa
Max. allowable pressure	0.5 MPa
Discharge air quantity (50/60 Hz)	19/25 L/min (ANR) ^{*1}
Rated voltage	Single phase 100 VAC (50/60 Hz)
Rated current (50/60 Hz)	3.3/3.5 A
Noise level	60 dB (A) with lid closed
Pump electric motor	4P, E-type, capacitor induction Automatic return thermal protector

Descriptions	ASU-S-C6-1
Pump electric motor output	90 W
Ambient temperature	5 to 35°C
Weight	15 kg
Dimensions	W350 × D225 × H560 mm
Pump starting	Pressure switch
Pump warranty period	1 year or 3,000 hours ^{*2}

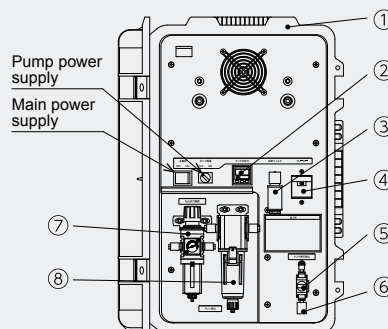
*1: The flow rate at atmospheric release

*2: When used within guidelines of ambient temperature and rated pressure, and even under continuous use.

Circuit diagram

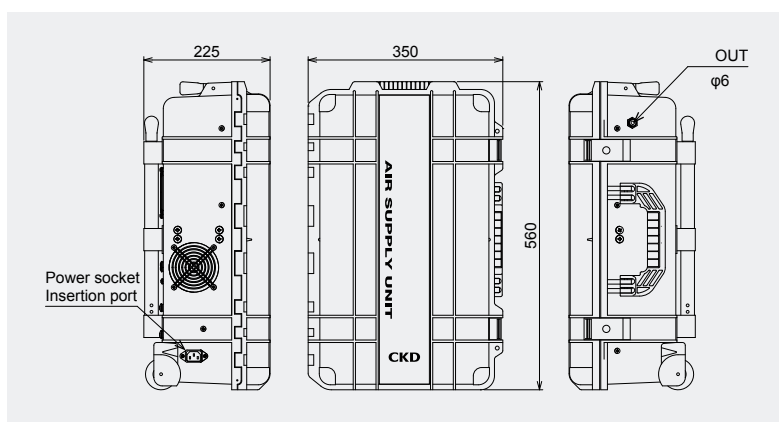


Parts list



No.	Part name
1	Case
2	Pressure sensor
3	Intake filter
4	Breaker
5	Quick valve
6	Silencer
7	Filter/regulator
8	Air filter

Dimensions



Safety precautions

WARNING

■ Design/selection

- Do not use for applications other than compressed air manufacturing.
- Do not use for medical equipment. There is a risk of personal injury.

■ Installation

- Use within the power voltage range in the specifications.
- Establish a ground connection. May lead to electric shock or serious bodily injury.

CAUTION

■ Design/selection

- Do not mount and use this device on transportation equipment such as vehicles or ships. The internal devices could be damaged by vibration, etc.
- If sudden load fluctuation is expected, take particular care with the discharge flow rate and tank capacity.
- Do not use when the installation environment or inlet air contains corrosive gas, chemical solutions, organic solvents, or combustible gas.
- Depending on the working environment, condensation may form, leading to outflow of water drops to the secondary side. If dry air is required, install a dryer in the secondary side.

■ Installation

- Use the product within the maximum operating ambient temperature range.
- Install the product in well ventilated places that are free of rain, water, waste, and dust.
- Do not use the product in areas with high humidity or where there is a risk of condensation.
- Install the product indoors, and avoid using it in areas exposed to direct sunlight or where heat is generated.
- Install on a level floor surface that is not subject to vibration.
- Make sure that the space is well ventilated, and secure enough space for maintenance and inspection by keeping 150 mm or more open on each of the 4 sides.

■ During Use & maintenance

- Regularly clean the filter. If filter elements become clogged, pressure loss increases.
- If there are large vibrations or noises, check the housing frame and the mounted portions of each part and device. If there are any loose screws or bolts, tighten them.
- Do not use benzene, paint thinner, or other substances containing volatile organic compounds when performing maintenance on this product.
- Drain accumulates in the filter case. During continuous operation, check and discharge the drain about once an hour.

■ Others

- Be familiar with the instruction manual that comes with the product before starting use.
- This product does not comply with change management.
- This product is precision equipment. Do not apply strong vibrations, impact, or excessive force. There is a risk of damage.
- Do use the telescoping handle for transportation to pick up the case when carrying it on staircases. There is a risk of damage.

If the goods and/or their replicas, the technology and/or software found in this catalog are to be exported, law requires that the exporter makes sure that they will never be used for the development and/or manufacture of weapons for mass destruction.

CKD Corporation

<Website>
http://www.ckd.co.jp/

Head Office · Plant	2-250 Uji, Komaki City, Aichi 485-8551	TEL(0568)77-1111	FAX(0568)77-1123
Sales And Marketing Div.	2-250 Uji, Komaki City, Aichi 485-8551	TEL(0568)74-1303	FAX(0568)77-3410
Overseas Sales Administration dpt.	2-250 Uji, Komaki City, Aichi 485-8551	TEL(0568)74-1338	FAX(0568)77-3461
Tokyo Branch Office	4F, Bunkahousou Media Plus, 1-31-1, Hamamatsu-cho, Minato-ku, Tokyo 105-0013	TEL(03)5402-3620	FAX(03)5402-0120
Nagoya Branch Office	2-250 Uji, Komaki City, Aichi 485-8551	TEL(0568)74-1356	FAX(0568)75-1692
Osaka Branch Office	1-3-20, Tosabori, Nishi-ku, Osaka 550-0001	TEL(06)6459-5770	FAX(06)6446-1945