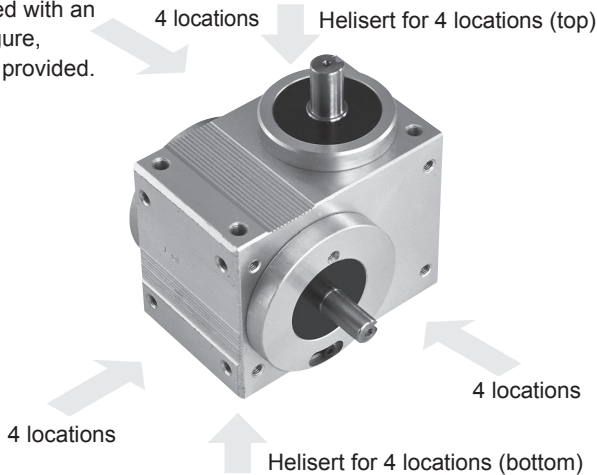


● Common specifications

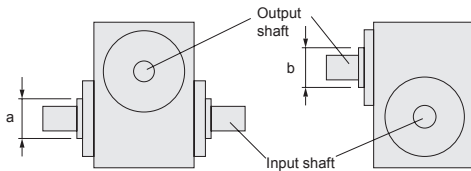


1. Installation position can be freely chosen. (Oilless)
2. Mounting face

On the face indicated with an arrow in the right figure, mounting holes are provided.



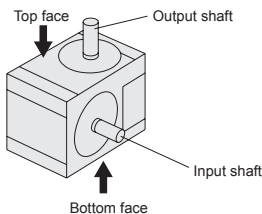
3. Material of housing / A ℓ
4. Oilless / grease filled lubrication
5. Diameter of input/output shaft stepped section



Dimensions	a	b
Size		
<b>025</b>	ø 8.5	ø 13
<b>032</b>	ø 10.5	ø 15

6. Housing dowel pin hole dimensions (custom order)

When housing dowel pin holes are to be added, the dimensions should be as follows:



	025	032
Bottom face		
Standard bore	2-ø4H8 depth 6	2-ø5H7 depth 8

\*For the tolerance of positioning pins on bottom face, contact us.

Product specifications  
 Compact  
 Standard  
 Table  
 Wide angle  
 Roller gear cam drive  
 Compact multi-index  
 Flat  
 Basic  
 Parallel cam drive  
 Linear  
 Circular  
 Rack and Pinion drive  
 Option



## 7. Optional gear head + motor

List of gear head + motor installation

Body	Model No.	RGIS RGOS	025	032
Motor output			6W	15W
Motor specification	Induction	Single-phase 100 V	⊙	⊙
		Single-phase 200V	○	○
	Reversible	Single-phase 100 V	○	○
		Single-phase 200V	○	○
	With electromagnetic brake	Single-phase 100 V	○	○
		Single-phase 200V	○	○
C/B	Single-phase 100 V	○	—	
Gear head reduction ratio			1/3, 1/3.6, 1/5, 1/6, 1/7.5, 1/9, 1/12.5, 1/15, 1/18, 1/25, 1/30, 1/36, 1/50, 1/60, 1/75, 1/90, 1/100, 1/120, 1/150, 1/180	
Gear housing and belt pulley reduction ratio			1/1	

- ⊙... Standard (Given in external dimensions)
- ... Semi standard
- ... No applicable model

Note: Electronic brake circuit is required when intermittently driven with an induction motor. Purchase a brake pack manufactured by Oriental Motor Company separately.

Note: Calculate the motor capacity before using.

## 11. About the options (motor)

Manufacturers specify the approximate service life for optional components as below. Depending on the operating frequency, a component may reach its service life quickly. Set up the maintenance schedule referring to the following service life.

Service life suggested by the manufacturers of optional components

Options	Approximate service life	Manufacturer
Motor with brake, Motor with C/B	2,000,000 operating cycles	Oriental Motors

## 8. Optional miniature worm reducer

Body	Model No.	Reducer Size	Reduction ratio
RGIS RGOS	025	CRG25	1/10, 1/20, 1/30, 1/40, 1/50, 1/60
	032	CRG32	1/10, 1/20, 1/30, 1/40, 1/50, 1/60

\* Note that the actual reduction ratio of 1/20 and 1/40 will be 1/19.5 and 1/39 respectively.

## 9. Optional single-turn detection cam on the input shaft + proximity switch

Proximity switch model No.

SW model No.	Manufacturer
E2S-Q23	OMRON

## 10. Optional torque saver (TSF2 to TSF4) + release detection proximity switch

Proximity switch model No.

SW model No.	Manufacturer
TL-W3MC1	OMRON

Product specifications

Compact

Standard

Table

Roller gear cam drive

Wide angle

Compact multi-index

Flat

Basic

Parallel cam drive

Linear

Circular

Option

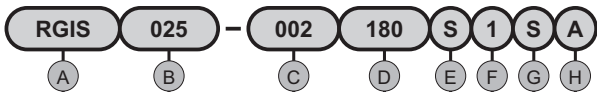
Linear

Circular

# Compact

## 1. Standard model No. Index series

Product specifications



A Model		B Shaft interval		C Index number (n)		D Total index angle (θt)		E Cam curve		F Cam helix direction/dwell No.															
RGIS	025	25 mm	002	2	045	45°	S	MS curve (Standard)	1	Left helix/1 dwell															
		32 mm								003	3	060	60°	C	MC curve (MCV50)	2	Left helix/2 dwell								
		004								4	090	90°	T				MT curve	3	Left helix/3 dwell						
		005								5	120	120°							4	Left helix/4 dwell					
		006								6	150	150°								5	Right helix/1 dwell				
		008								8	180	180°									6	Right helix/2 dwell			
		009								9	210	210°										7	Right helix/3 dwell		
		010								10	240	240°											8	Right helix/4 dwell	
		012								12	270	270°												<p>Left helix (Standard)      Right helix</p>	
		016								16	300	300°													
		018								18	330	330°													
		020								20															
		024								24															
		030								30															
		032								32															
		036								36															
		040								40															
	048	48																							

For details of the timing chart, refer to B-7.

### Example of model No. (1)

**RGIS025-003120C1FA**

Shaft interval ..... 25 mm

Index number ..... 3

Total index angle ..... 120°

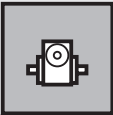
Cam curve ..... MC curve

Cam helix direction/dwell No. .... Left helix/1 dwell

Shape of the output shaft ..... Flange

Material of housing ..... Al housing

Compact  
Standard  
Table  
Wide angle  
Compact multi-index  
Flat  
Basic  
Parallel cam drive  
Linear  
Circular  
Pneum. and Electric drive  
Option



G Shape of the output shaft		H Material of housing	
S	Straight	A	Aluminum housing
F	Flange		
	* When a torque saver (optional) is installed, the code will be S.		* No Fc housing specification is available for the compact types.

**Example of model No. (2)**

**RGIS032-048150S4SA**

- Shaft interval ..... 32 mm
- Index number ..... 48
- Total index angle ..... 150° (37.5° × 4)
- Cam curve ..... MS curve
- Cam helix direction/dwell No. .... Left helix/4 dwell
- Shape of the output shaft ..... Straight
- Material of housing ..... Al housing

Pick and Place drive Linear Circular	Parallel cam drive				Roller gear cam drive				Compact
	Basic	Flat	Compact multi-index	Wide angle	Table	Standard			

# Compact

2-1. Model No. with options

Common for index and oscillating series



Product specifications

Compact

Standard

Table

Wide angle

Compact multi-index

Flat

Basic

Parallel cam drive

Circular

Flange and

Option

Roller gear cam drive

Input/Output shaft specification code

I Input shaft specification code (left shaft)	J Input shaft specification code (right shaft)	K Output shaft specification code
<p>N</p> <p>Output shaft Stepped area Left shaft N□□</p>	<p>N</p> <p>Right shaft □N□</p>	<p>N</p> <p>□□N</p>
<p>K</p> <p>K□□</p>	<p>K</p> <p>□K□</p>	<p>K</p> <p>□□K</p>
<p>C</p> <p>C□□</p>	<p>C</p> <p>□C□</p>	<p>F</p> <p>A</p> <p>□□F □□A</p>
<p>W</p> <p>W□□</p>	<p>W</p> <p>□W□</p>	<p>S</p> <p>B</p> <p>□□S □□B</p> <p>Note 4</p>
<p>G</p> <p>G□□</p>	<p>G</p> <p>□G□</p>	
<p>J</p> <p>J□□ (Proximity switch)</p>	<p>J</p> <p>□J□ (Proximity switch)</p>	

▼ When a worm reducer is installed

L M N O P		N	
L M	Reducer size	N	Reduction ratio
02	CRG25	1	1/10
03	CRG32	2	1/20
		3	1/30
		4	1/40
		5	1/50
		6	1/60

▼ When a gear head and a motor are installed

L M N O P		M	
L	Motor type	M	Motor output
E	Induction	A	6 W
R	Reversible	B	15 W
B	With brake		
C	With C/B		

\* Refer to List of gear heads and motor installation on D-4.



\* While a torque saver is installed onto the output shaft and when none of the worm reducer and the gear head & motor can be installed onto the input shaft, insert a hyphen "-" at (L) and continue with the torque saver installation specification code.

Worm reducer installation specification code					
Clutch Brake:		Mounting direction			
N Clutch Brake: No  * Clutch/Brake is not available for the compact worm reducer CRG series.	Left shaft installation	A	B	C	D
		J	K	L	M
		AR	BR	CR	DR
		E	F	G	H
	Right shaft installation	N	P	Q	R
		ER	FR	GR	HR

Torque saver mounting specification code		Release torque range		Application index size
Q TSF size	R	Note 1		
02	TSF2	A	A	025
		B	B	
03	TSF3	C	C	032
		D	D	
04	TSF4	C	C	032
		D	D	

When TSF4 is installed on RG□S032, the release torque range will be either C or D.  
 Note 1: When you specify the release torque of a torque saver, notify us of the value. Otherwise, the product will be shipped adjusted at the min. value within the adjusting range.  
 Note 2: When the reduction ratio is between 1/3 and 1/9, the input shaft rotational speed may reach 200 rpm or higher. Special specification model number is required.  
 Note 3: When the reduction ratio is between 1/100 and 1/180, the belt strength for the belt (lateral/longitudinal) drive will become an issue. Please contact CKD.  
 Note 4: The proximity switch for release detection of a torque saver is the NO type. NC type is also available.

Gear head + motor installation specification code							
Rated voltage		Gear head reduction ratio		Driving method			
A Single-phase 100 V	A	1/3	L	1/30	G Gear drive	H Lateral belt drive	V Longitudinal belt drive
	C Single-phase 200 V	B	1/3.6	M			
C		1/5	N	1/50			
D		1/6	P	1/60			
E		1/7.5	Q	1/75			
F		1/9	R	1/90			
G		1/12.5	S	1/100			
H		1/15	T	1/120			
J		1/18	U	1/150			
K		1/25	V	1/180			



Product specifications

Compact

Standard

Table

Wide angle

Compact multi-index

Flat

Basic

Parallel cam drive

Pics and Parts drive

Linear

Circular

Option

# Compact

## 2-2. Examples of model numbers with options / 3. Custom specification model No.

When you place an order with a model number, ensure that it matches exactly what you ordered. Even if 1 letter is incorrectly written in symbols representing the model No., the product will be with incorrect specifications. In order to deliver what you require, carefully determine the model number referring to the following examples.

Product specifications

Compact

Standard

Table

Wide angle

Roller gear cam drive

Compact multi-index

Flat

Basic

Parallel cam drive

Linear

Circular

Face and

Rack drive

Option

### Example of model No. (3)

RGIS025-020240S2SA-NNK  
 Input shaft specification  
 Left shaft: Standard  
 Right shaft: Standard  
 Output shaft specification  
 No keyway

### Example of model No. (4)

RGIS032-008090S1SA-NGNEBANH  
 Input shaft specification  
 Left shaft: Standard  
 Right shaft: Gear head + motor installed  
 Output shaft specification: Standard

Motor installation specification  
 Motor type: Induction  
 Motor output: 15 W  
 Voltage: Single-phase 100 V  
 Reduction ratio: 1/50  
 Driving method: Lateral belt drive

### Example of model No. (5)

RGIS025-003210S1SA-NNF-02B  
 Input shaft specification  
 Left shaft: Standard  
 Right shaft: Standard  
 Output shaft specification: Torque saver installed

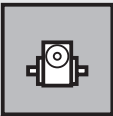
Torque saver mounting specification  
 TSF size: TSF2  
 Release torque range: B

### Example of model No. (6)

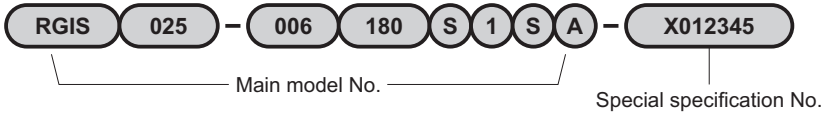
RGIS032-008270S1SA-JGSRBAKH03A  
 Input shaft specification  
 Left shaft: Input shaft - with rotation detection cam + proximity switch (1 station)  
 Right shaft: Gear head + motor installed  
 Output shaft specification: Torque saver installed (with proximity switch)

Gear head + motor installation specification  
 Motor type: Reversible  
 Motor output: 15 W  
 Voltage: Single-phase 100 V  
 Reduction ratio: 1/25  
 Driving method: Lateral belt drive

Torque saver mounting specification  
 TSF size: TSF3  
 Release torque range: A



● Special specification model number **Common for index and oscillating series**



\* Add "-X (6 digit number)" after the main model No. as the special specification number.

The special specification model number shall be determined after the consultation with the customer. Options other than the standard are available upon request. Please provide us with the specifications.

\* High speed specifications (input shaft rotational speed of 200 rpm or higher) are deemed to be special specifications.



Product specifications

Roller gear cam drive	Compact
	Standard
	Table
Parallel cam drive	Wide angle
	Compact multi-index
Flat	Basic
	Basic
Plex and Paces drive	Linear
	Circular
Option	

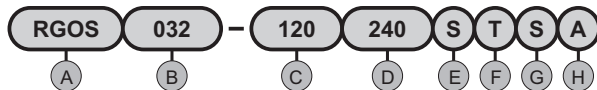


# Compact

## 1. Standard model No.

## Oscillating series

Product specifications

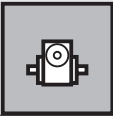


A Model		B Shaft interval		C Oscillating angle ( $\psi$ )		D Total index angle ( $\theta$ t)		E Cam curve		F Orbit pattern	
RGOS		025	25 mm	180	180°	090	90° (45°×2)	S	MS curve (Standard)	T	When the input shaft starts to rotate from the rotation reference point, the output shaft rotates in sequence from 1 and 2 as in the figure. Output shaft oscillation Reference position (keyway) 
		032	32 mm	120	120°	120	120° (60°×2)	C	MC curve (MCV50)	(Standard)	
				090	90°	180	180° (90°×2)	T	MT curve		
				060	60°	240	240° (120°×2)				
				045	45°	300	300° (150°×2)				S When the input shaft starts to rotate from the rotation reference point, the output shaft rotates in sequence from 1 and 2 as in the figure. Output shaft oscillation Reference position (keyway) 
				030	30°	360	360° (180°×2)				

### Example of model No. (1)

#### RGOS025-180300STSA

- Shaft interval ..... 25 mm
- Oscillating angle ..... 180°
- Total index angle ..... 300° (150° × 2)
- Cam curve ..... MS curve
- Orbit pattern ..... T
- Shape of the output shaft ..... Straight
- Material of housing ..... Al housing



G Shape of the output shaft		H Material of housing	
S	Straight	A	Aluminum housing
F	Flange		
* When a torque saver (optional) is installed, the code will be S.		* No Fc housing specification is available for the compact types.	

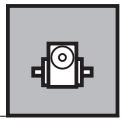
Example of model No. (2)

**RGOS032-060120STFA**

- Shaft interval ..... 32 mm
- Oscillating angle ..... 60°
- Total index angle ..... 120° (60° × 2)
- Cam curve ..... MS curve
- Orbit pattern ..... T
- Shape of the output shaft ..... Flange
- Material of housing ..... Al housing

Pics and Pics drive	Parallel cam drive	Roller gear cam drive				Compact
		Basic	Flat	Compact multi-index	Wide angle	
Linear	Circular	Table				Standard
		Option				





## Characteristics

Descriptions	Unit	Characteristics	
		Output shaft	Input shaft
Allowable thrust force	N	300	200
Allowable radial force	N	250	200
Allowable bending moment	N·m	7	—
Moment of inertia	kg·m <sup>2</sup>	9.14 × 10 <sup>-6</sup>	9.42 × 10 <sup>-6</sup>

Descriptions	Unit	Characteristics
Internal frictional torque (Tin)	N·m	0.68
Product weight	kg	1
Oil level	ℓ	Sealed grease
Body color		Silver
Finishing		Alumite

## Accuracy

Index accuracy (sec.)		
Indexing accuracy	1 dwell	±90
	2 dwell	±180
	3 dwell	±240
	4 dwell	±300
Repeatability		45

Oscillating accuracy (sec.)	
Indexing accuracy	±180
Repeatability	45

\* For dwell accuracy, please contact us.

## List of index angles

Index series **RGIS 025** Cam curve / MS

Total index angle(θt)		45	60	90	120	150	180	210	240	270	300	330
Index number(n)												
1 dwell	2					○	○	○	○	○	○	○
	3				○	○	○	○	○	○	○	○
	4				○	○	○	○	○	○	○	○
	5									○	○	○
	6		○	○	○	○	○	○	○	○	○	○
	8			○	○	○	○	○	○	○	○	○
	9				○	○	○	○	○	○	○	○
2 dwell	16				○	○	○	○	○	○	○	○
	18				○	○	○	○	○	○	○	○
	20				○	○	○	○	○	○	○	○
3 dwell	24					○	○	○	○	○	○	○
	30					○	○	○	○	○	○	○
4 dwell	32						○	○	○	○	○	○
	36						○	○	○	○	○	○
	40					○	○	○	○	○	○	

Oscillating series **RGOS 025** Cam curve / MS

Total index angle(θt)	90	120	180	240	300	360
Oscillating angle (ψ)						
180					○	○
120				○	○	○
90				○	○	○
60		○	○	○	○	○
45			○	○	○	○

Product specifications

Compact

Standard

Table

Roller gear cam drive

Wide angle

Compact multi-index

Flat

Basic

Parallel cam drive

Pick and Place drive

Linear

Circular

Option

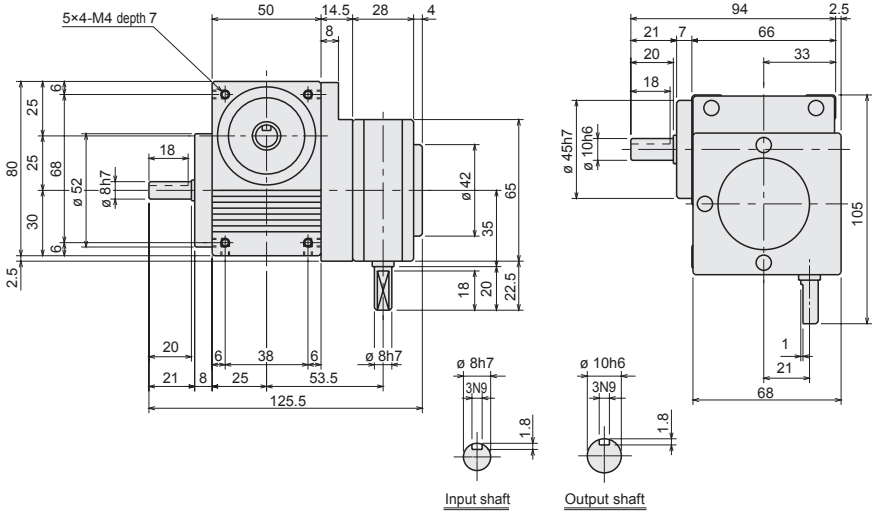
Index	<b>RG I S 025</b>
Oscillator	<b>RGOS 025</b>

● Dimensions with options

Product specifications

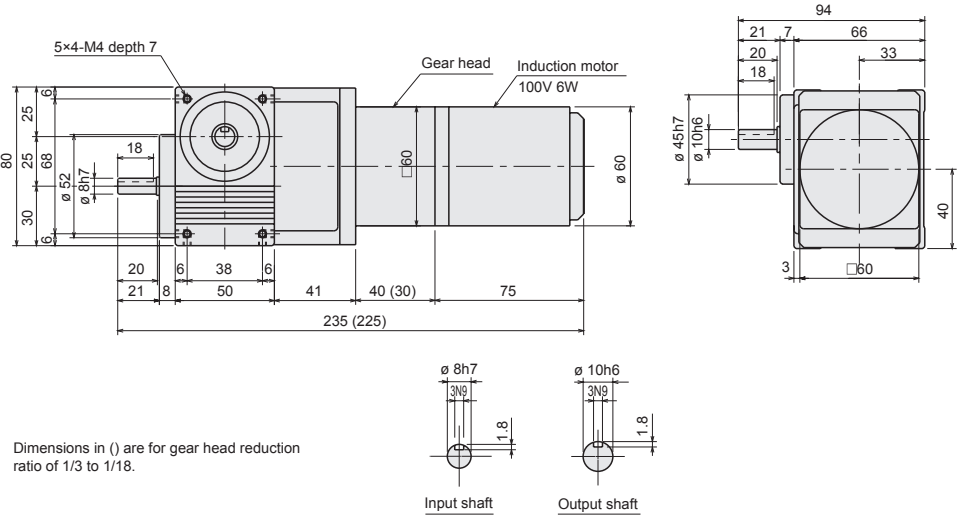
Compact  
Standard  
Table  
Wide angle  
Roller gear cam drive  
Compact multi-index  
Flat  
Basic  
Parallel cam drive  
Circular  
Linear  
Option

With worm reducer (CRG25)



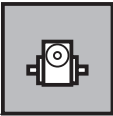
RG I S 025-     SA-NWN02  NG  
RGOS 025

With Gear head + motor (gear drive)

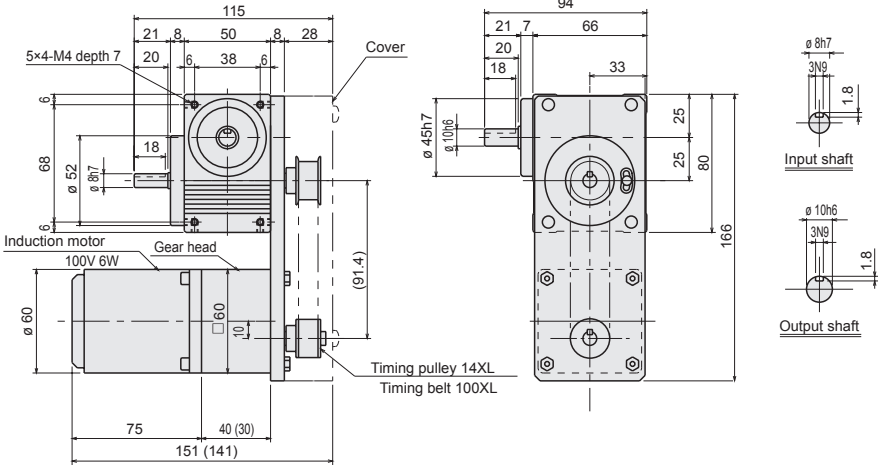


Dimensions in ( ) are for gear head reduction ratio of 1/3 to 1/18.

RG I S 025-     SA-NGNEAA  G  
RGOS 025



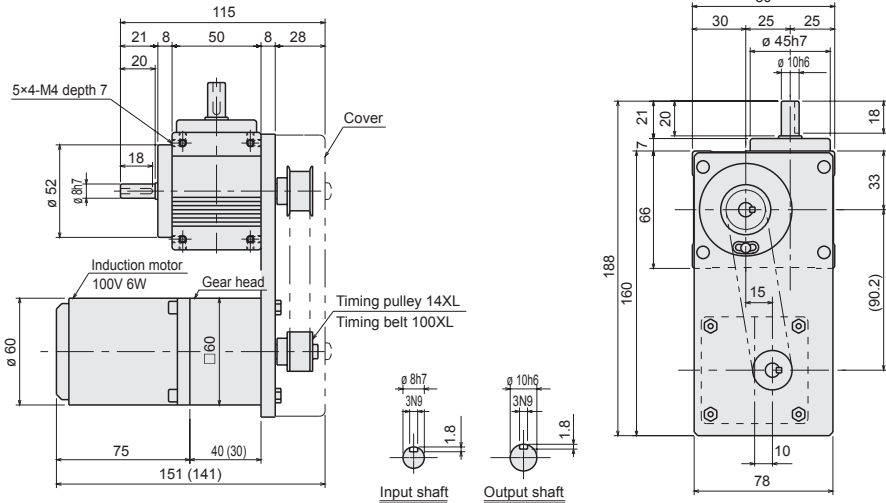
### With Gear head + motor (lateral gear drive)



Dimensions in ( ) are for gear head reduction ratio of 1/3 to 1/18.  
Dimensions are for 1/3 to 1/18.

RG | S 025- [ ] [ ] [ ] [ ] [ ] SA-NGNEAA [ ] H  
RGOS 025

### With Gear head + motor (longitudinal gear drive)



Dimensions in ( ) are for gear head reduction ratio of 1/3 to 1/18.

RG | S 025- [ ] [ ] [ ] [ ] [ ] SA-NGNEAA [ ] V  
RGOS 025

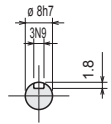
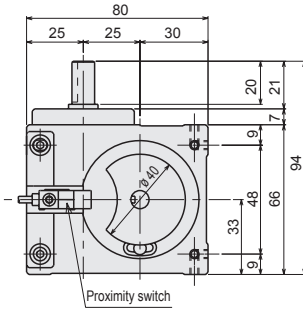
Product specifications

Roller gear cam drive	Compact multi-index	Compact
	Wide angle	Standard
	Table	Table
	Flat	Table
Parallel cam drive	Basic	Basic
	Option	Option
Piec and Piece drive	Linear	Linear
	Circular	Circular

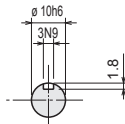
● Dimensions with options

Product specifications

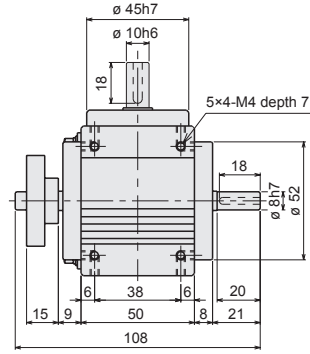
Input shaft - with rotation detection cam + proximity switch



Input shaft

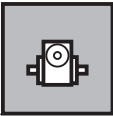


Output shaft

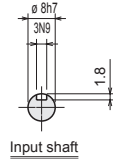
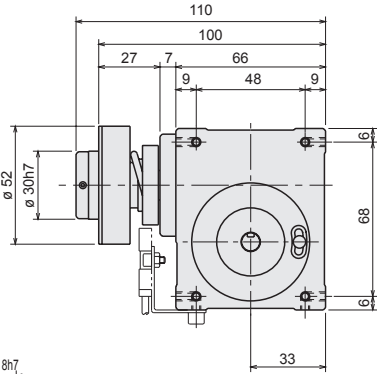
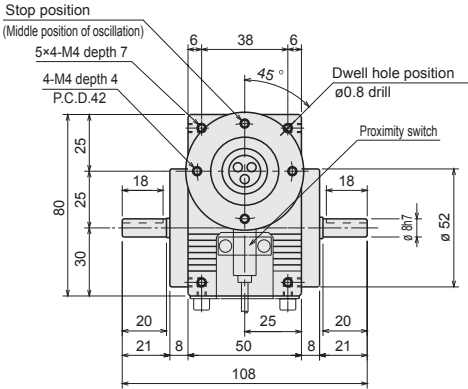


RG I S 025- [ ] [ ] [ ] [ ] [ ] SA-JNN  
 RGOS 025

- Compact
- Standard
- Table
- Wide angle
- Roller gear cam drive
- Flat
- Basic
- Parallel cam drive
- Linear
- Circular
- Option



With Torque saver (TSF2)



RG I S 025-  
RGOS 025

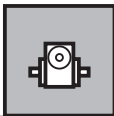
SA-NNF-02

Product specifications

Option	Pick and Place drive Linear	Parallel cam drive	Roller gear cam drive			Compact multi-index
			Wide angle	Table	Standard	
			Compact multi-index	Table	Standard	
Option	Pick and Place drive Linear	Parallel cam drive	Roller gear cam drive			Compact multi-index
			Wide angle	Table	Standard	
			Compact multi-index	Table	Standard	







## Characteristics

Descriptions	Unit	Characteristics	
		Output shaft	Input shaft
Allowable thrust force	N	300	200
Allowable radial force	N	250	200
Allowable bending moment	N·m	7	-
Moment of inertia	kg·m <sup>2</sup>	$2.36 \times 10^{-5}$	$9.42 \times 10^{-6}$

Descriptions	Unit	Characteristics
Internal frictional torque (Tin)	N·m	0.68
Product weight	kg	1
Oil level	ℓ	Sealed grease
Body color		Silver
Finishing		Alumite

## Accuracy

Index accuracy (sec.)		
Indexing accuracy	1 dwell	±90
	2 dwell	±180
	3 dwell	±240
	4 dwell	±300
Repeatability		45

Oscillating accuracy (sec.)	
Indexing accuracy	±180
Repeatability	45

\* For dwell accuracy, please contact CKD.

## List of index angles

Index series **RGIS 025** Cam curve/MS

Total index angle(θt)		45	60	90	120	150	180	210	240	270	300	330
Index number(n)												
1 dwell	2					○	○	○	○	○	○	○
	3				○	○	○	○	○	○	○	○
	4				○	○	○	○	○	○	○	○
	5									○	○	○
	6		○	○	○	○	○	○	○	○	○	○
	8			○	○	○	○	○	○	○	○	○
	9				○	○	○	○	○	○	○	○
2 dwell	16				○	○	○	○	○	○	○	○
	18				○	○	○	○	○	○	○	○
	20				○	○	○	○	○	○	○	○
3 dwell	24					○	○	○	○	○	○	○
	30					○	○	○	○	○	○	○
4 dwell	32						○	○	○	○	○	○
	36						○	○	○	○	○	○
	40						○	○	○	○	○	○

Oscillating series **RGOS 025** Cam curve/MS

Total index angle(θt)	90	120	180	240	300	360
Oscillating angle (ψ)						
180					○	○
120				○	○	○
90				○	○	○
60		○	○	○	○	○
45			○	○	○	○

Product specifications

Compact

Standard

Table

Roller gear cam drive

Wide angle

Compact multi-index

Flat

Basic

Parallel cam drive

Pick and Place drive

Linear

Circular

Option

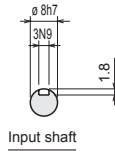
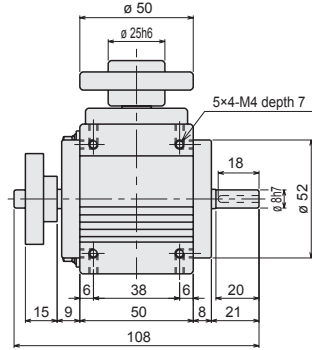
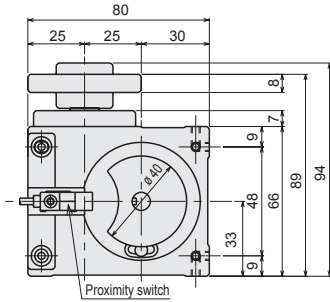




● Dimensions with options

Product specifications

Input shaft - with rotation detection cam + proximity switch



Input shaft

RG I S 025- [ ] [ ] [ ] [ ] FA-JNN  
 RGOS 025

Compact	Standard	Table	Wide angle	Compact multi-index	Roller gear cam drive	Basic	Parallel cam drive	Linear	Option
								Circular	
								Pin and Rack drive	



Difference between shafts: **32** mm Straight shaft

# Compact

● Standard specifications

Index

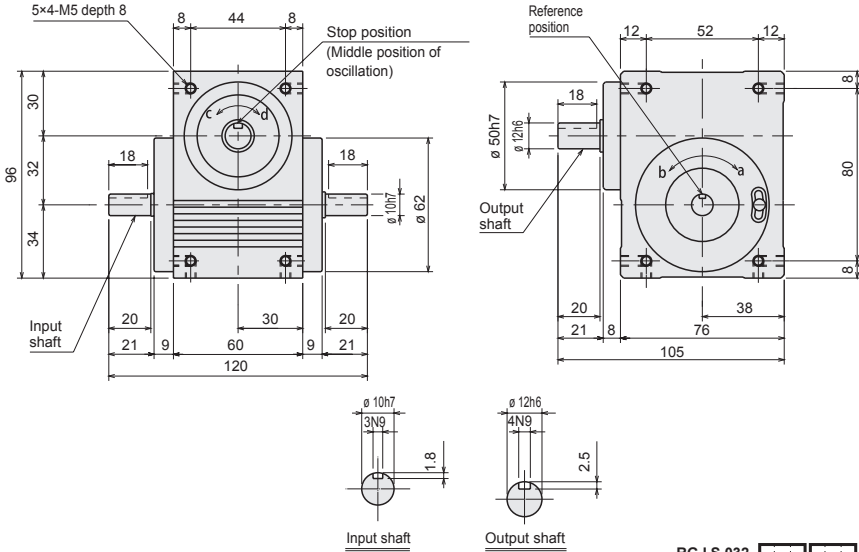
**RG I S 032**

Oscillator

**RGOS 032**

Product specifications

## Dimensions



RG I S 032-     SA  
 RGOS 032

Compact

Standard

Table

Wide angle

Compact multi-index

Flat

Basic

Parallel cam drive

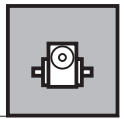
Linear

Circular

Pin and Rack drive

Option

Roller gear cam drive



## Characteristics

Descriptions	Unit	Characteristics	
		Output shaft	Input shaft
Allowable thrust force	N	400	220
Allowable radial force	N	400	250
Allowable bending moment	N·m	12	-
Moment of inertia	kg·m <sup>2</sup>	2.23 × 10 <sup>-5</sup>	2.94 × 10 <sup>-5</sup>

Descriptions	Unit	Characteristics
Internal frictional torque (Tin)	N·m	1.1
Product weight	kg	1.4
Oil level	ℓ	Sealed grease
Body color		Silver
Finishing		Alumite

## Accuracy

Index accuracy (sec.)		
Indexing accuracy	1 dwell	±60
	2 dwell	±180
	3 dwell	±240
	4 dwell	±300
Repeatability		30

Oscillating accuracy (sec.)	
Indexing accuracy	±180
Repeatability	30

\* For dwell accuracy, please contact CKD.

## List of index angles

Index series **RGIS 032** Cam curve / MS

Total index angle(θt)		45	60	90	120	150	180	210	240	270	300	330
Index number(n)												
1 dwell	2					○	○	○	○	○	○	○
	3				○	○	○	○	○	○	○	○
	4			○	○	○	○	○	○	○	○	○
	5											
	6		○	○	○	○	○	○	○	○	○	○
	8	○	○	○	○	○	○	○	○	○	○	○
	9			○	○	○	○	○	○	○	○	○
	10				○	○	○	○	○	○	○	○
2 dwell	12			○	○	○	○	○	○	○	○	○
	16				○	○	○	○	○	○	○	○
	18				○	○	○	○	○	○	○	○
	20				○	○	○	○	○	○	○	○
3 dwell	24			○	○	○	○	○	○	○	○	○
	24											
	30					○	○	○	○	○	○	○
4 dwell	36				○	○	○	○	○	○	○	○
	32						○	○	○	○	○	○
	36						○	○	○	○	○	○
	40						○	○	○	○	○	○
	48				○	○	○	○	○	○	○	

Oscillating series **RGOS 032** Cam curve / MS

Total index angle(θt)	90	120	180	240	300	360
Oscillating angle (ψ)						
180					○	○
120				○	○	○
90			○	○	○	○
60		○	○	○	○	○
45	○	○	○	○	○	○
30			○	○	○	○

Product specifications

Compact

Standard

Table

Wide angle

Roller gear cam drive

Compact multi-index

Flat

Basic

Parallel cam drive

Linear

Circular

Option



Difference between shafts: **32 mm**

Straight shaft

Index

**RG I S 032**

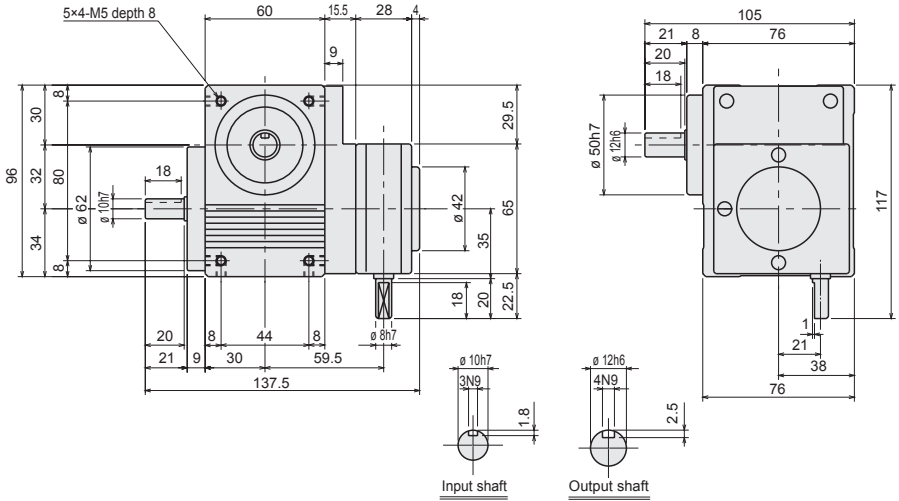
Oscillator

**RGOS 032**

● Dimensions with options

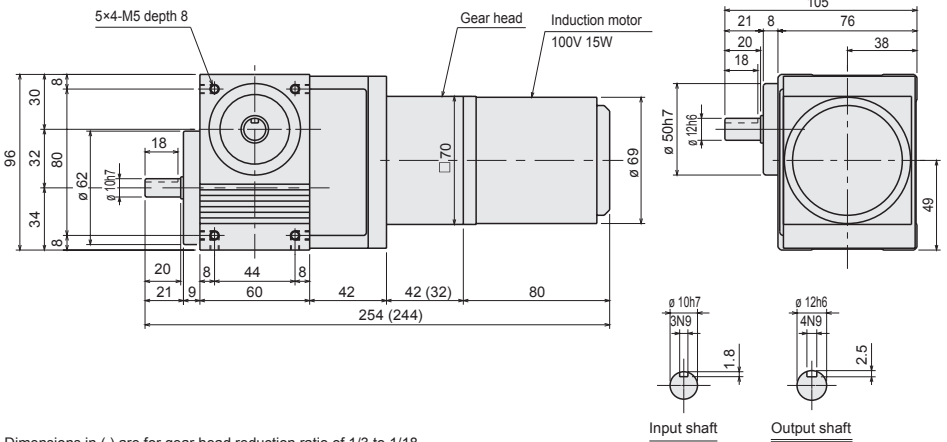
Product specifications

With worm reducer (CRG32)



RG I S 032- [ ] [ ] [ ] [ ] [ ] SA-NWN03 [ ] NG  
RGOS 032

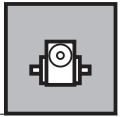
With Gear head + motor (gear drive)



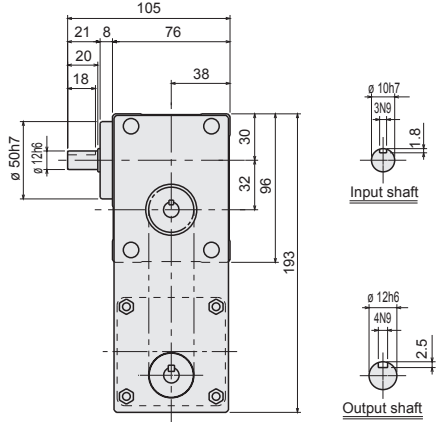
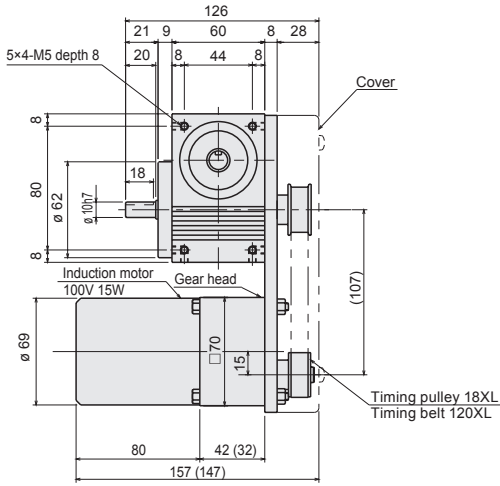
Dimensions in ( ) are for gear head reduction ratio of 1/3 to 1/18.

RG I S 032- [ ] [ ] [ ] [ ] [ ] SA-NGNEBA [ ] G  
RGOS 032

Compact  
Standard  
Table  
Wide angle  
Roller gear cam drive  
Compact multi-index  
Flat  
Basic  
Parallel cam drive  
Circular  
Linear  
Option



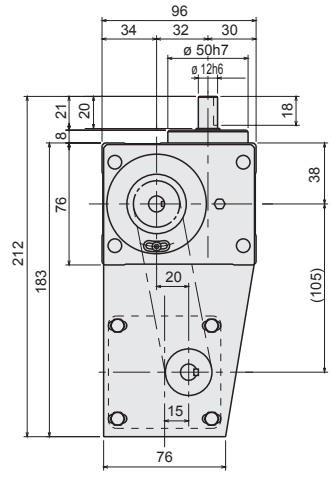
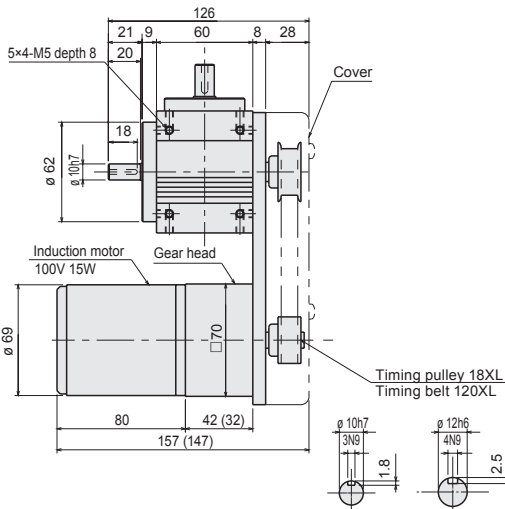
### With Gear head + motor (lateral gear drive)



Dimensions in ( ) are for gear head reduction ratio of 1/3 to 1/18.

RG I S 032- [ ] [ ] [ ] [ ] SA-NGNEBA [ ] H  
RGOS 032

### With Gear head + motor (longitudinal gear drive)



Dimensions in ( ) are for gear head reduction ratio of 1/3 to 1/18.

RG I S 032- [ ] [ ] [ ] [ ] SA-NGNEBA [ ] V  
RGOS 032

Product specifications

Roller gear cam drive	Compact	Standard	Table	Wide angle	Multi-index
	Compact multi-index	Table	Wide angle	Multi-index	
	Table	Wide angle	Multi-index		
	Wide angle	Multi-index			
Parallel cam drive	Basic	Flat			
	Basic	Flat			
Pick and Place drive	Linear				
	Circular				
Option					

Difference between shafts:

**32** mm

Straight shaft

Index

**RG I S 032**

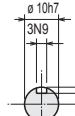
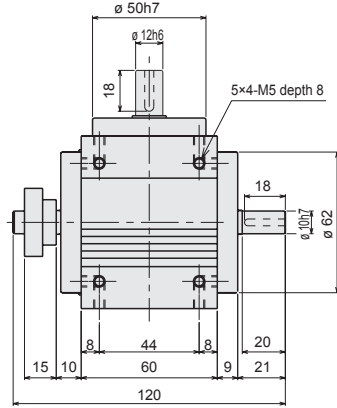
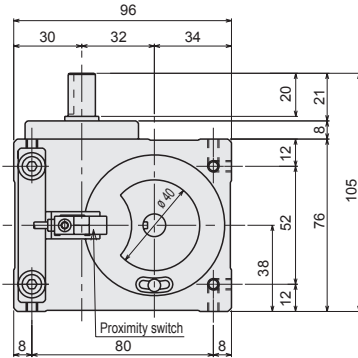
Oscillator

**RGOS 032**

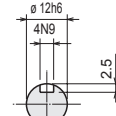
● Dimensions with options

Product specifications

Input shaft - with rotation detection cam + proximity switch



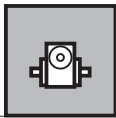
Input shaft



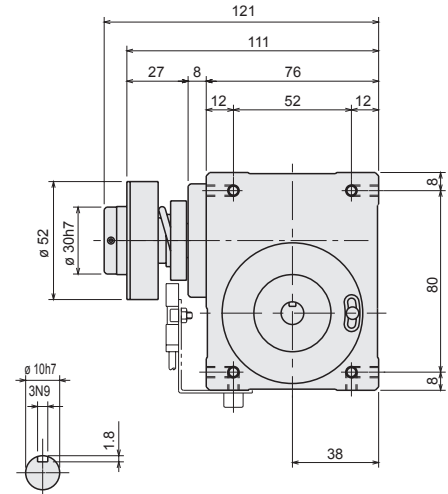
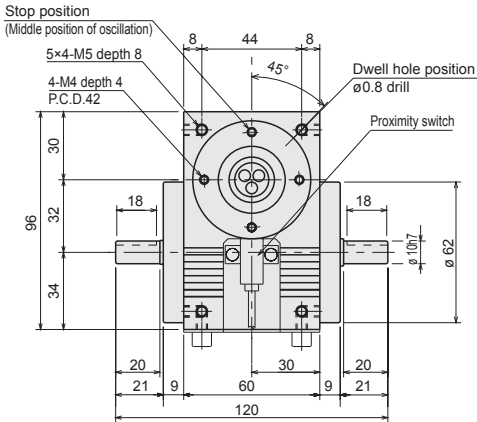
Output shaft

RG I S 032- [ ] [ ] [ ] [ ] SA-JNN  
RGOS 032

- Compact
- Standard
- Table
- Wide angle
- Wide gear cam drive
- Flat
- Basic
- Parallel cam drive
- Circular
- Linear
- Option



## With Torque saver (TSF3)

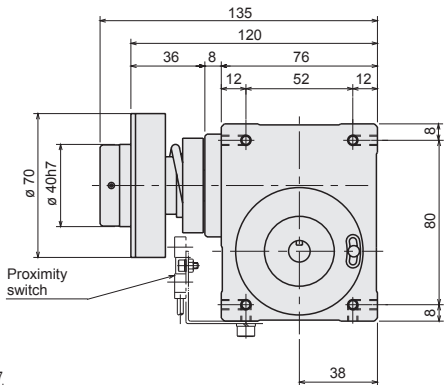
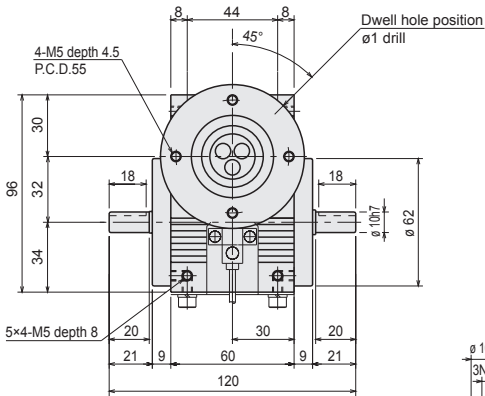


Input shaft

RG I S 032-     SA-NNF-03

RGOS 032

## With Torque saver (TSF4)



Input shaft

RG I S 032-     SA-NNF-04

RGOS 032

The adjusting range of release torque is either C or D.

Product specifications

Roller gear cam drive

Compact multi-index

Wide angle

Table

Standard

Compact

Flat

Basic

Parallel cam drive

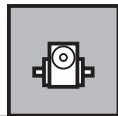
Pick and Place drive

Linear

Circular

Option





## Characteristics

Descriptions	Unit	Characteristics	
		Output shaft	Input shaft
Allowable thrust force	N	400	220
Allowable radial force	N	400	250
Allowable bending moment	N·m	12	-
Moment of inertia	kg·m <sup>2</sup>	3.67 × 10 <sup>-5</sup>	2.94 × 10 <sup>-5</sup>

Descriptions	Unit	Characteristics
Internal frictional torque (Tin)	N·m	1.1
Product weight	kg	1.4
Oil level	ℓ	Sealed grease
Body color		Silver
Finishing		Alumite

## Accuracy

Index accuracy (sec.)		
Indexing accuracy	1 dwell	±60
	2 dwell	±180
	3 dwell	±240
	4 dwell	±300
Repeatability		30

Oscillating accuracy (sec.)	
Indexing accuracy	±180
Repeatability	30

\* For dwell accuracy, please contact us.

## List of index angles

Index series **RGIS 032** Cam curve / MS

Total index angle(θt)		45	60	90	120	150	180	210	240	270	300	330
Index number(n)												
1 dwell	2					○	○	○	○	○	○	○
	3				○	○	○	○	○	○	○	○
	4			○	○	○	○	○	○	○	○	○
	5											
	6		○	○	○	○	○	○	○	○	○	○
	8	○	○	○	○	○	○	○	○	○	○	○
	9			○	○	○	○	○	○	○	○	○
	10				○	○	○	○	○	○	○	○
2 dwell	12			○	○	○	○	○	○	○	○	○
	16				○	○	○	○	○	○	○	○
	18				○	○	○	○	○	○	○	○
	20				○	○	○	○	○	○	○	○
3 dwell	24			○	○	○	○	○	○	○	○	○
	24											
	30					○	○	○	○	○	○	○
4 dwell	36				○	○	○	○	○	○	○	○
	32						○	○	○	○	○	○
	36						○	○	○	○	○	○
	40						○	○	○	○	○	○
	48				○	○	○	○	○	○	○	

Oscillating series **RGOS 032** Cam curve / MS

Total index angle(θt)	90	120	180	240	300	360
Oscillating angle (ψ)						
180					○	○
120				○	○	○
90			○	○	○	○
60		○	○	○	○	○
45	○	○	○	○	○	○
30			○	○	○	○

Product specifications

Compact

Standard

Table

Roller gear cam drive

Wide angle

Compact multi-index

Flat

Basic

Parallel cam drive

Linear

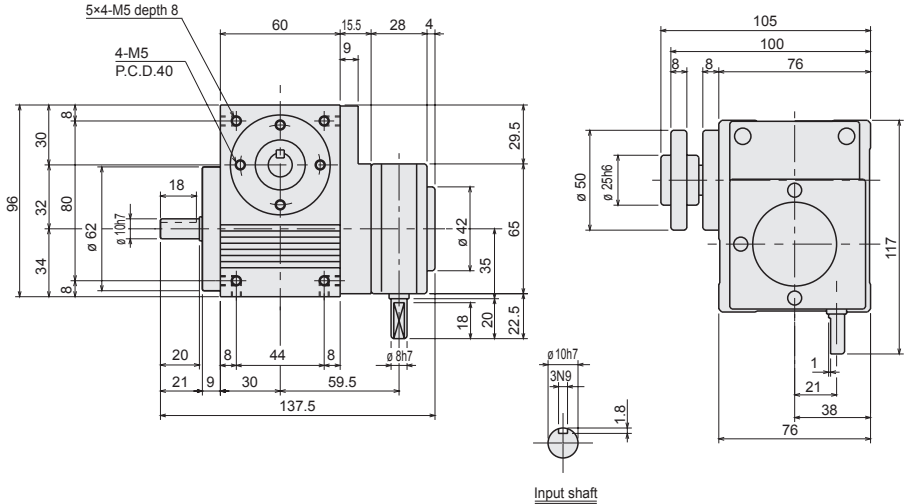
Circular

Option

● Dimensions with options

Product specifications

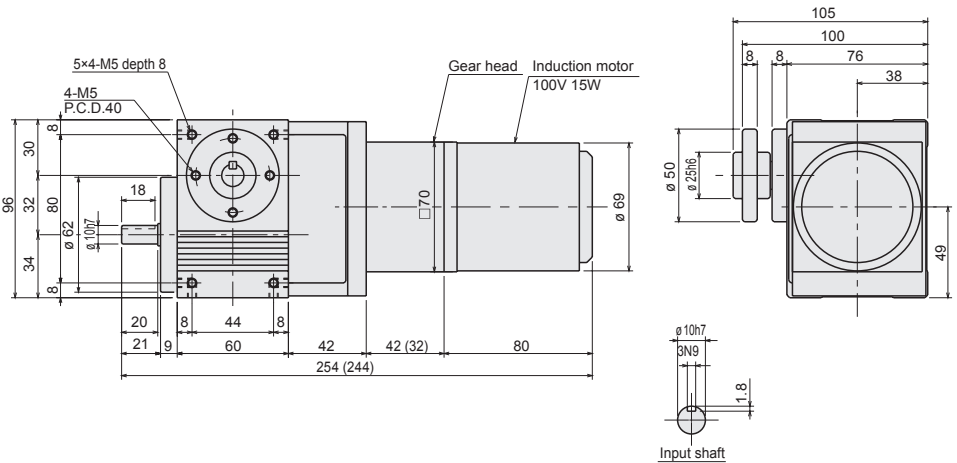
With worm reducer (CRG32)



Input shaft

RG I S 032-           FA-NWN03  NG  
 RGOS 032

With Gear head + motor (gear drive)



Input shaft

Dimensions in ( ) are for gear head reduction ratio of 1/3 to 1/18.

RG I S 032-           FA-NGNEBA  G  
 RGOS 032





Difference between shafts:

**32** mm

Flange shaft

Index

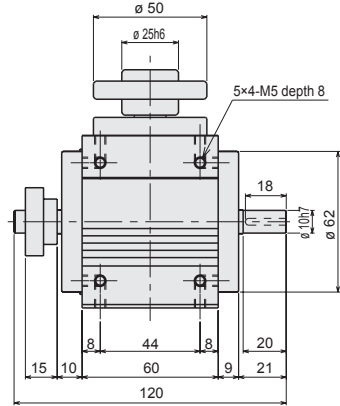
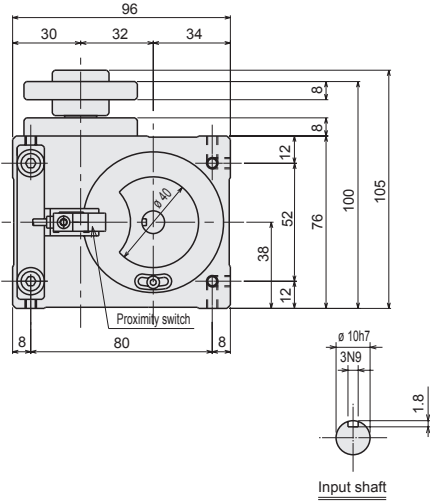
**RG I S 032**

Oscillator

**RGOS 032**

● Dimensions with options

Input shaft - with rotation detection cam + proximity switch



RG I S 032-      FA-JNN  
 RGOS 032

Product specifications

- Compact
- Standard
- Table
- Wide gear cam drive
- Wide angle
- Wide gear cam drive
- Compact multi-index
- Roller gear cam drive
- Flat
- Basic
- Parallel cam drive
- Linear
- Circular
- Flange and
- Flange drive
- Option