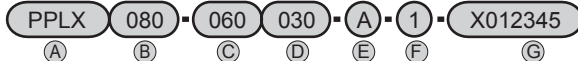


## How to order



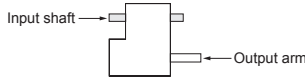
Product specifications



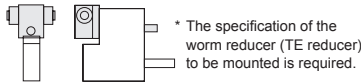
A Model No.	B Size	C Horizontal stroke (La)		D Vertical stroke (Lb)	
<b>PPLX</b>	040	010	10 mm	005	5 mm
	050	to	to	to	to
	063	200	200 mm	060	60 mm
	080				

### About Input shaft specifications

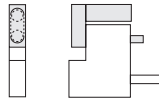
#### Standard



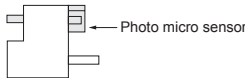
#### With the worm reducer



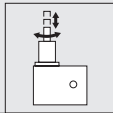
#### With C/B motor



#### With input shaft position detection cam and photo micro sensor

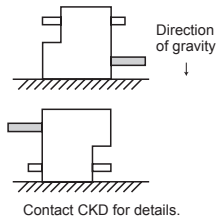


Compact  
 Standard  
 Table  
 Wide angle  
 Compact multi-index  
 Flat  
 Basic  
 Parallel cam drive  
 Linear Circular  
 Rack and Pinion  
 Option



Product specifications

E Output type		F Installation position	G Special specification No.
A Type A: Arm		1	<p>* To place an order for a P&amp;P drive, a "Special specification number" is required. The special specification model number shall be determined after a consultation with the customer. Mounting options are available upon request. Please provide CKD with the specifications.</p>
B Type B: Table type		2	



\*The standard cam curve for PPLX Series is the MS curve.

Roller gear cam drive  
 Compact multi-index  
 Compact  
 Standard  
 Table  
 Wide angle  
 Flat  
 Basic



Worm reducer installation specification

Standard reducer size		Reduction ratio	Clutch/Brake:	Mounting direction	
P&P drive Size	TE reducer size			A Input shaft	J
PPLX040	TE35	1 / 10	Clutch/Brake Yes		
		1 / 20			
PPLX050	TE35	1 / 30	Clutch/Brake No		
		1 / 40			
PPLX063	TE42	1 / 50			
PPLX080	TE42	1 / 60			

\* Mounting positions L and C are not available for PPLX040.

Parallel cam drive  
 Flat and Parallel drive  
 Linear  
 Circular  
 Option



## Characteristics

Descriptions		Characteristics	
La stroke length	mm	max.80	
Lb stroke length	mm	max.30	
Internal weight of La stroke section (moa)	kg	0.5	
Internal weight of Lb stroke section (mob)	kg	1.0	
Bending rigidity of the output section	b direction	mm/N	0.004
	c direction	mm/N	0.015
Lubrication method		Grease lubrication	

Descriptions		Characteristics
Allowable thrust force N of the input shaft		800
Allowable radial force N for the input shaft		750
Moment of inertia of the input shaft	kg·m <sup>2</sup>	2.7 × 10 <sup>-4</sup>
Internal frictional torque (Tin)	N·m	1.9
Repeatability	mm	±0.02
Product weight	kg	10
Paint color		Silver

## Rated dynamic payload table

Stroke direction	Stroke length (mm)	Index angle (°)	Rated dynamic payload (kg)							
			Input shaft rotational speed (rpm)							
			20	30	40	50	60	80	100	120
La	10	24	2.9	2.5	2.2	2.0	1.7	1.3	0.8	0.4
		35	3.3	2.8	2.6	2.3	2.1	1.8	1.6	1.3
	15	30	2.5	2.1	1.9	1.7	1.5	1.2	0.7	0.4
		40	2.7	2.3	2.1	1.9	1.7	1.5	1.2	1.0
	20	34	2.2	1.9	1.6	1.5	1.3	1.0	0.6	0.3
		45	2.3	2.0	1.8	1.7	1.5	1.3	1.1	0.9
	25	38	2.0	1.7	1.5	1.3	1.2	1.0	0.6	0.2
		50	2.1	1.9	1.7	1.5	1.4	1.2	1.0	0.8
	30	41	1.8	1.6	1.4	1.2	1.1	0.9	0.5	0.2
		50	1.9	1.7	1.5	1.3	1.2	1.0	0.8	0.6
	35	44	1.7	1.5	1.3	1.2	1.0	0.8	0.5	0.2
		55	1.8	1.6	1.4	1.3	1.2	1.0	0.8	0.6
	40	47	1.6	1.4	1.2	1.1	1.0	0.8	0.4	0.1
		55	1.7	1.5	1.3	1.2	1.1	0.9	0.7	0.4
	45	50	1.6	1.3	1.2	1.0	0.9	0.7	0.4	0.1
		60	1.6	1.4	1.3	1.1	1.0	0.8	0.7	0.4
	50	52	1.5	1.3	1.1	1.0	0.9	0.7	0.3	0.1
		60	1.5	1.3	1.2	1.1	1.0	0.8	0.6	0.3
	55	57	1.5	1.3	1.1	1.0	0.9	0.7	0.4	0.1
		65	1.5	1.3	1.2	1.0	0.9	0.8	0.6	0.3
60	62	1.4	1.2	1.1	1.0	0.9	0.7	0.5	0.2	
	70	1.5	1.3	1.1	1.0	0.9	0.8	0.6	0.4	
65	69	1.4	1.2	1.1	1.0	0.9	0.7	0.6	0.3	
	80	1.4	1.2	1.1	1.0	0.9	0.8	0.7	0.6	
70	75	1.4	1.2	1.1	0.9	0.9	0.7	0.6	0.3	
	85	1.4	1.2	1.1	1.0	0.9	0.8	0.6	0.5	
75	80	1.3	1.2	1.0	0.9	0.8	0.7	0.6	0.4	
	90	1.4	1.2	1.1	1.0	0.9	0.8	0.6	0.5	
80	84	1.3	1.1	1.0	0.9	0.8	0.7	0.6	0.4	
	95	1.3	1.2	1.0	1.0	0.9	0.7	0.6	0.5	
Lb	5	24	3.5	3.0	2.7	2.5	2.3	1.9	1.7	1.1
		35	3.9	3.4	3.1	2.9	2.7	2.4	2.1	1.9
	10	31	2.5	2.2	2.0	1.8	1.6	1.4	1.1	0.6
		40	2.7	2.4	2.1	2.0	1.8	1.6	1.4	1.2
	15	38	2.1	1.9	1.7	1.5	1.4	1.2	1.0	0.5
		50	2.3	2.0	1.8	1.7	1.5	1.3	1.2	1.0
	20	43	1.9	1.6	1.5	1.3	1.2	1.0	0.8	0.3
		55	2.0	1.8	1.6	1.4	1.3	1.2	1.0	0.9
	25	50	1.7	1.5	1.4	1.2	1.1	0.9	0.8	0.3
		60	1.8	1.6	1.4	1.3	1.2	1.0	0.9	0.8
	30	54	1.6	1.4	1.3	1.1	1.0	0.9	0.7	0.2
		65	1.7	1.5	1.3	1.2	1.1	1.0	0.8	0.7

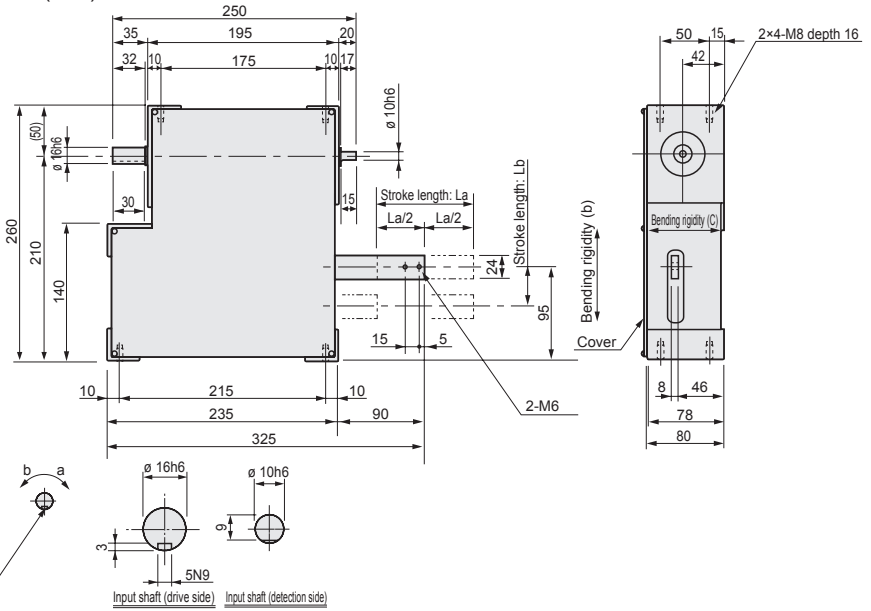
Product specifications

Compact  
 Standard  
 Table  
 Roller gear cam drive  
 Wide angle  
 Compact multi-index  
 Flat  
 Basic  
 Parallel cam drive  
 Plus and Plus drive  
 Linear  
 Circular  
 Option



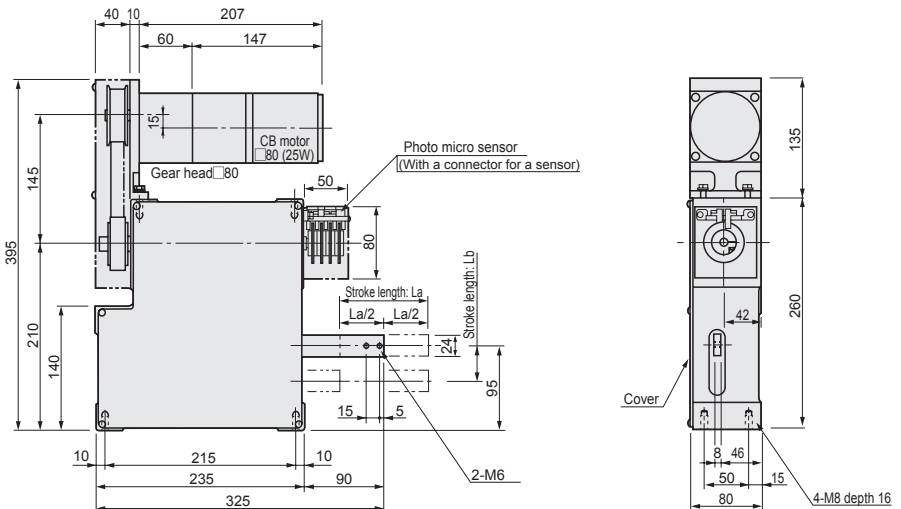
# Dimensions

## ● PPLX050A (arm)



# Dimensions with options

## With C/B motor + photo micro sensor



## Characteristics

Descriptions		Characteristics	
La stroke length	mm	max.100	
Lb stroke length	mm	max.40	
Internal weight of La stroke section (moa)	kg	0.8	
Internal weight of Lb stroke section (mob)	kg	1.8	
Bending rigidity of the output section	b direction	mm/N	0.0035
	c direction	mm/N	0.0150
Lubrication method		Grease lubrication	

Descriptions		Characteristics	
Allowable thrust force N of the input shaft		1200	
Allowable radial force N for the input shaft		900	
Moment of inertia of the input shaft	kg·m <sup>2</sup>	7.3 × 10 <sup>-4</sup>	
Internal frictional torque (Tin)		N·m	3.0
Repeatability		mm	±0.02
Product weight		kg	15
Paint color			Silver

## Rated dynamic payload table

Stroke direction	Stroke length (mm)	Index angle (°)	Rated dynamic payload (kg)						
			Input shaft rotational speed (rpm)						
			20	30	40	50	60	80	100
La	10	22	4.0	3.4	3.0	2.6	2.3	1.7	0.7
		30	4.4	3.9	3.4	3.1	2.8	2.4	2.0
	20	30	3.0	2.5	2.2	1.9	1.7	1.3	0.5
		40	3.2	2.8	2.5	2.2	2.0	1.7	1.4
	30	37	2.5	2.1	1.9	1.6	1.4	1.1	0.4
		45	2.7	2.3	2.0	1.8	1.6	1.3	1.1
	40	42	2.2	1.9	1.6	1.4	1.3	1.0	0.3
		50	2.3	2.0	1.8	1.6	1.4	1.1	0.9
	50	47	2.0	1.7	1.5	1.3	1.2	0.9	0.2
		55	2.1	1.8	1.6	1.4	1.3	1.0	0.7
	60	52	1.9	1.6	1.4	1.2	1.1	0.8	0.2
		60	2.0	1.7	1.5	1.3	1.2	1.0	0.6
	70	58	1.8	1.5	1.3	1.2	1.0	0.8	0.2
		70	1.9	1.6	1.4	1.3	1.2	0.9	0.8
	80	65	1.7	1.5	1.3	1.2	1.0	0.8	0.3
		75	1.8	1.5	1.4	1.2	1.1	0.9	0.7
	90	75	1.7	1.4	1.3	1.1	1.0	0.8	0.5
		85	1.7	1.5	1.3	1.2	1.1	0.9	0.7
100	82	1.6	1.4	1.2	1.1	1.0	0.8	0.6	
	90	1.7	1.4	1.3	1.2	1.0	0.9	0.7	
Lb	10	27	3.6	3.1	2.7	2.5	2.2	1.8	0.9
		35	3.9	3.4	3.0	2.8	2.5	2.2	1.9
	20	38	2.7	2.3	2.0	1.8	1.7	1.4	0.6
		50	2.9	2.5	2.3	2.1	1.9	1.6	1.4
	30	46	2.3	2.0	1.7	1.5	1.4	1.1	0.2
		55	2.4	2.0	1.8	1.7	1.5	1.3	1.1
	40	54	2.0	1.7	1.5	1.4	1.3	1.0	0.1
		65	2.1	1.8	1.6	1.5	1.4	1.1	1.0

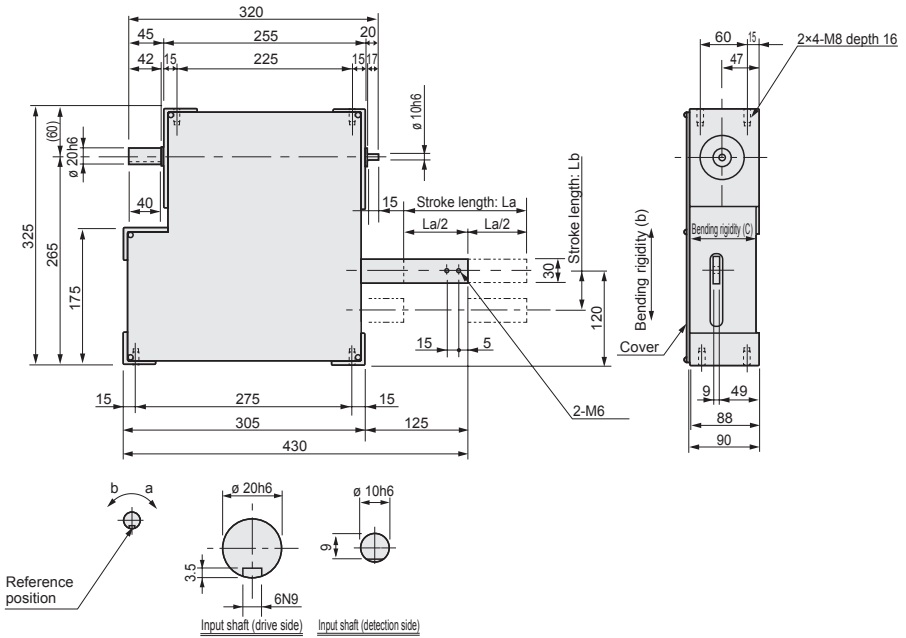
Product specifications

Compact  
Standard  
Table  
Roller gear cam drive  
Wide angle  
Compact multi-index  
Flat  
Basic  
Parallel cam drive  
Pie and P-Base drive  
Linear  
Circular  
Option



# Dimensions

Product specifications

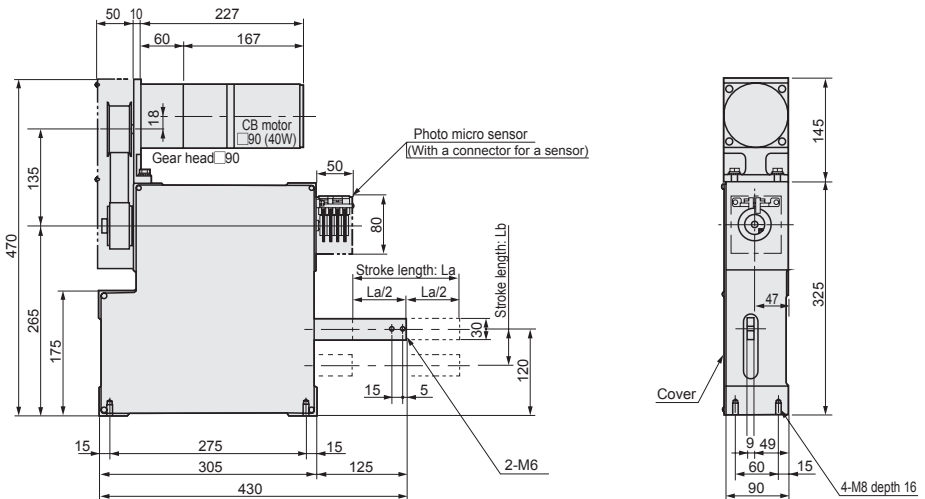


Compact multi-index  
Wide angle  
Table  
Standard  
Compact

# Dimensions with options



With C/B motor + photo micro sensor



Linear  
Circular  
Pick and Place drive  
Option

## Characteristics

Descriptions		Characteristics	
La stroke length	mm	max.150	
Lb stroke length	mm	max.50	
Internal weight of La stroke section (moa)	kg	1.7	
Internal weight of Lb stroke section (mob)	kg	3.0	
Bending rigidity of the output section	b direction	mm/N	0.003
	c direction	mm/N	0.020
Lubrication method		Grease lubrication	

Descriptions		Characteristics
Allowable thrust force N of the input shaft		2000
Allowable radial force N for the input shaft		1600
Moment of inertia of the input shaft	kg·m <sup>2</sup>	2.4 × 10 <sup>-4</sup>
Internal frictional torque (Tin)	N·m	4.8
Repeatability	mm	±0.02
Product weight	kg	25
Paint color		Silver

## Rated dynamic payload table

Stroke direction	Stroke length (mm)	Index angle (°)	Rated dynamic payload (kg)							
			Input shaft rotational speed (rpm)							
			10	20	30	40	50	60	70	80
La	10	21	8.0	6.4	5.4	4.7	4.1	3.6	3.2	2.8
	20	30	6.0	4.7	4.0	3.5	3.1	2.7	2.4	2.1
	30	36	5.0	4.0	3.4	2.9	2.6	2.3	2.0	1.8
	40	41	4.4	3.5	3.0	2.6	2.3	2.0	1.7	1.5
	50	46	4.0	3.2	2.7	2.4	2.1	1.8	1.6	1.4
	60	50	3.7	3.0	2.5	2.2	1.9	1.7	1.5	1.3
	70	54	3.5	2.8	2.4	2.1	1.8	1.6	1.4	1.2
	80	58	3.3	2.6	2.2	2.0	1.7	1.5	1.3	1.2
	90	60	3.2	2.5	2.1	1.8	1.6	1.4	1.2	1.1
	100	64	3.1	2.4	2.1	1.8	1.6	1.4	1.2	1.0
	110	71	3.0	2.4	2.0	1.8	1.5	1.4	1.2	1.1
	120	77	2.9	2.3	2.0	1.7	1.5	1.3	1.2	1.1
	130	84	2.8	2.3	1.9	1.7	1.5	1.3	1.2	1.1
	140	92	2.8	2.2	1.9	1.7	1.5	1.3	1.2	1.1
	150	99	2.7	2.2	1.9	1.7	1.5	1.3	1.2	1.1
Lb	10	27	6.7	5.4	4.6	4.1	3.7	3.3	3.0	2.7
	20	37	5.0	4.0	3.4	3.0	2.7	2.4	2.2	2.0
	30	45	4.2	3.3	2.9	2.6	2.3	2.1	1.9	1.7
	40	52	3.7	3.0	2.6	2.3	2.0	1.8	1.6	1.5
	50	58	3.4	2.7	2.3	2.1	1.9	1.7	1.5	1.4

Product specifications

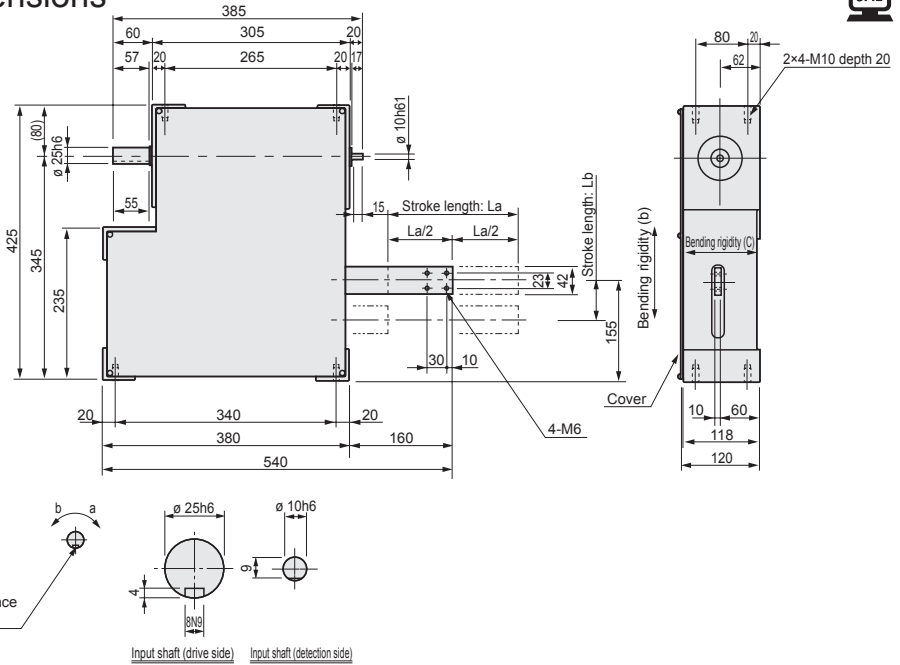
Compact  
Standard  
Table  
Wide angle  
Compact multi-index  
Flat  
Basic  
Parallel cam drive  
Pica and Pica drive  
Linear  
Circular  
Option





**Dimensions**

Product specifications

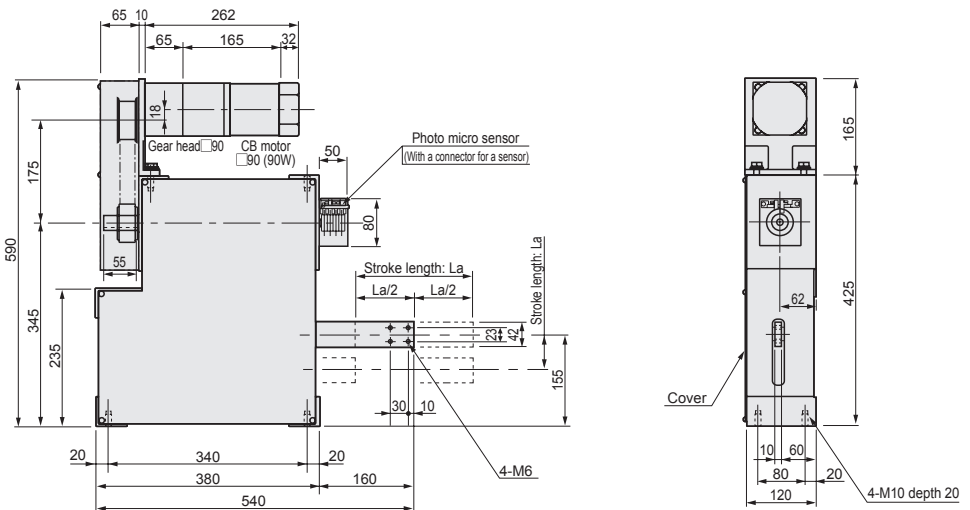


Compact multi-index  
Wide gear cam drive  
Table  
Standard  
Compact

**Dimensions with options**



With C/B motor + photo micro sensor



Parallel cam drive  
Linear Circular  
Pick and Place drive  
Option

## Characteristics

Descriptions		Characteristics	
La stroke length	mm	max.200	
Lb stroke length	mm	max.60	
Internal weight of La stroke section (moa)	kg	3.2	
Internal weight of Lb stroke section (mob)	kg	5.3	
Bending rigidity of the output section	b direction	mm/N	0.0025
	c direction	mm/N	0.0250
Lubrication method		Grease lubrication	

Descriptions		Characteristics	
Allowable thrust force N of the input shaft		2500	
Allowable radial force N for the input shaft		2700	
Moment of inertia of the input shaft	kg·m <sup>2</sup>	$8.6 \times 10^{-3}$	
Internal frictional torque (Tin)		N·m	7.8
Repeatability		mm	±0.02
Product weight		kg	50
Paint color			Silver

## Rated dynamic payload table

Stroke direction	Stroke length (mm)	Index angle (°)	Rated dynamic payload (kg)							
			Input shaft rotational speed (rpm)							
			10	20	30	40	50	60	70	80
La	10	20	11.2	8.9	7.5	6.5	5.7	5.0	4.4	3.8
	20	28	8.2	6.5	5.5	4.8	4.2	3.6	3.2	2.8
	30	33	6.9	5.4	4.6	3.9	3.4	3.0	2.6	2.3
	40	38	6.1	4.8	4.0	3.5	3.0	2.6	2.3	2.0
	50	43	5.5	4.4	3.7	3.2	2.8	2.4	2.1	1.8
	60	47	5.1	4.0	3.4	2.9	2.6	2.2	1.9	1.7
	70	50	4.8	3.8	3.2	2.7	2.4	2.1	1.8	1.6
	80	53	4.5	3.6	3.0	2.6	2.2	1.9	1.7	1.5
	90	57	4.3	3.4	2.9	2.5	2.2	1.9	1.6	1.4
	100	60	4.2	3.3	2.8	2.4	2.1	1.8	1.6	1.4
	110	62	4.0	3.1	2.6	2.3	2.0	1.7	1.5	1.3
	120	65	3.9	3.0	2.6	2.2	1.9	1.7	1.4	1.3
	130	68	3.7	2.9	2.5	2.1	1.9	1.6	1.4	1.2
	140	70	3.6	2.9	2.4	2.1	1.8	1.6	1.4	1.2
	150	73	3.5	2.8	2.4	2.0	1.8	1.5	1.3	1.2
	160	78	3.5	2.7	2.3	2.0	1.7	1.5	1.3	1.2
	170	83	3.4	2.7	2.3	2.0	1.7	1.5	1.3	1.2
	180	88	3.4	2.7	2.3	2.0	1.7	1.5	1.3	1.2
	190	94	3.3	2.6	2.2	1.9	1.7	1.5	1.3	1.2
	200	99	3.3	2.6	2.2	1.9	1.7	1.5	1.3	1.2
Lb	10	27	8.9	7.2	6.2	5.5	4.9	4.4	4.0	3.6
	20	36	6.5	5.2	4.5	4.0	3.5	3.2	2.9	2.6
	30	44	5.5	4.4	3.8	3.3	3.0	2.7	2.4	2.2
	40	51	4.9	3.9	3.4	3.0	2.7	2.4	2.1	1.9
	50	57	4.4	3.5	3.1	2.7	2.4	2.2	2.0	1.8
	60	63	4.1	3.3	2.8	2.5	2.2	2.0	1.8	1.6

Product specifications

Compact  
 Standard  
 Table  
 Roller gear cam drive  
 Wide angle  
 Compact multi-index  
 Flat  
 Basic  
 Parallel cam drive  
 Plus and Plus drive  
 Linear  
 Circular  
 Option



# Dimensions

Product specifications

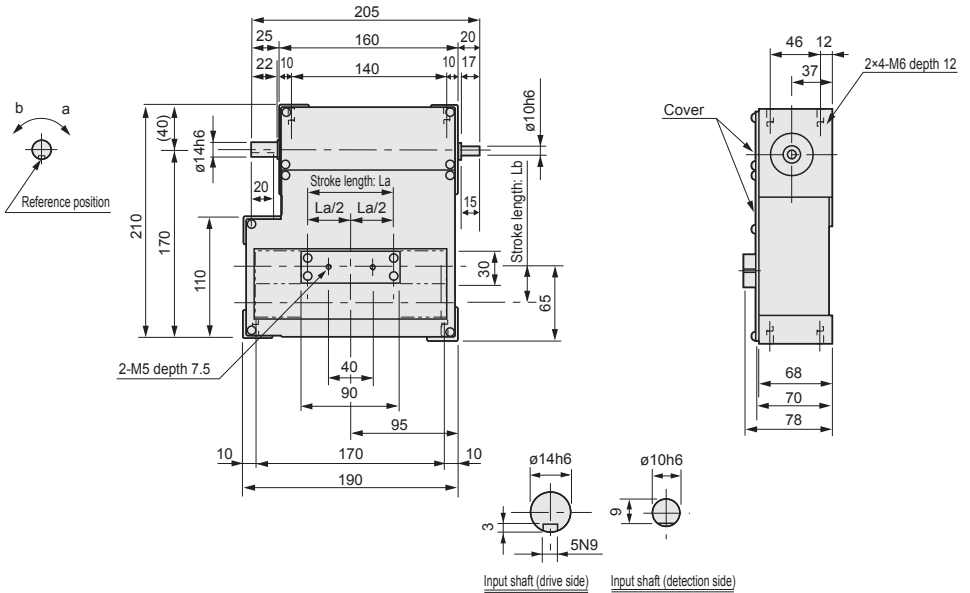
Compact  
Standard  
Table  
Wide angle  
Roller gear cam drive

Flat  
Basic

Parallel cam drive

Linear  
Circular  
Pick and Place drive

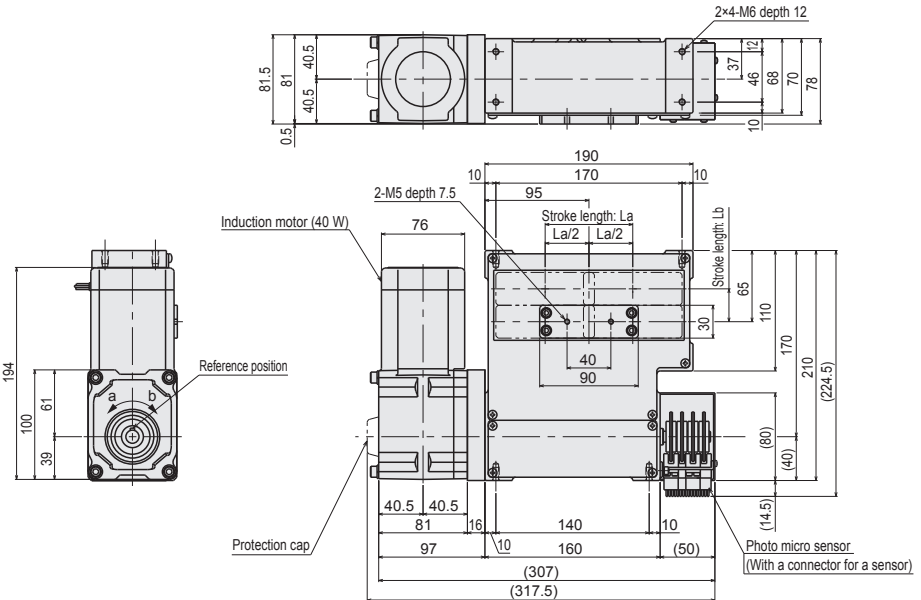
Option



# Dimensions with options



## Hollow shaft geared motor (40 W) + micro sensor



## Characteristics

Descriptions	Characteristics
La stroke length mm	max.80
Lb stroke length mm	max.30
Internal weight of La stroke section (moa) kg	0.6
Internal weight of Lb stroke section (mob) kg	1.2
Product weight kg	10
Lubrication method	Grease lubrication

Descriptions	Characteristics
Allowable thrust force N of the input shaft	800
Allowable radial force N for the input shaft	750
Moment of inertia of the input shaft kg·m <sup>2</sup>	2.7 × 10 <sup>-4</sup>
Internal frictional torque (Tin) N·m	1.9
Repeatability mm	±0.02
Paint color	Silver

## Rated dynamic payload table

Stroke direction	Stroke length (mm)	Index angle (°)	Rated dynamic payload (kg)									
			Input shaft rotational speed (rpm)									
			20	30	40	50	60	80	100	120		
La	10	24	3.8	3.3	2.9	2.6	2.3	1.2	0.6	0.2		
		35	4.3	3.7	3.4	3.1	2.8	2.4	1.9	1.2		
	15	30	3.7	3.2	2.8	2.5	2.2	1.2	0.6	0.2		
		40	4.0	3.5	3.1	2.8	2.6	2.2	1.5	0.9		
	20	34	3.5	3.0	2.7	2.4	2.0	1.1	0.5	0.2		
		45	3.8	3.3	3.0	2.7	2.5	2.1	1.4	0.8		
	25	38	3.4	3.0	2.6	2.3	1.9	1.0	0.5	0.1		
		50	3.7	3.2	2.9	2.6	2.4	2.0	1.3	0.7		
	30	41	3.4	2.9	2.5	2.3	1.7	0.9	0.4	0.1		
		50	3.5	3.1	2.7	2.5	2.2	1.6	0.9	0.5		
	35	44	3.3	2.8	2.5	2.2	1.6	0.8	0.3	-		
		55	3.5	3.0	2.7	2.4	2.2	1.6	0.9	0.5		
	40	47	3.3	2.8	2.5	2.2	1.5	0.7	0.3	-		
		55	3.4	2.9	2.6	2.3	2.1	1.3	0.7	0.3		
	45	50	3.2	2.8	2.4	2.1	1.5	0.7	0.3	-		
		60	3.4	2.9	2.6	2.3	2.1	1.3	0.7	0.3		
	50	52	3.2	2.7	2.4	1.9	1.3	0.6	0.2	-		
		60	3.3	2.8	2.5	2.3	2.0	1.1	0.6	0.2		
	55	57	3.2	2.8	2.4	2.1	1.5	0.7	0.3	-		
		65	3.3	2.8	2.5	2.3	2.1	1.1	0.6	0.2		
	60	62	3.2	2.8	2.4	2.2	1.6	0.8	0.3	0.1		
		70	3.3	2.8	2.5	2.3	2.1	1.2	0.7	0.3		
	65	69	3.2	2.8	2.5	2.2	1.8	1.0	0.5	0.1		
		80	3.3	2.9	2.6	2.3	2.1	1.5	0.9	0.4		
70	75	3.2	2.8	2.5	2.2	2.0	1.1	0.6	0.2			
	85	3.3	2.9	2.6	2.3	2.1	1.6	0.9	0.5			
75	80	3.2	2.8	2.5	2.3	2.0	1.1	0.6	0.2			
	90	3.3	2.9	2.6	2.3	2.1	1.6	1.0	0.5			
80	84	3.2	2.8	2.5	2.3	2.0	1.2	0.6	0.3			
	95	3.3	2.9	2.6	2.3	2.2	1.7	1.0	0.5			
Lb	5	24	4.1	3.6	3.2	2.9	2.7	2.3	1.8	0.9		
		35	4.6	4.0	3.6	3.4	3.1	2.8	2.5	2.2		
	10	31	3.6	3.2	2.8	2.6	2.3	2.0	1.1	0.4		
		40	3.9	3.4	3.1	2.8	2.6	2.3	2.0	1.4		
	15	38	3.5	3.0	2.7	2.4	2.2	1.9	0.9	0.2		
		50	3.7	3.3	2.9	2.7	2.5	2.2	1.9	1.4		
	20	43	3.4	2.9	2.6	2.4	2.1	1.7	0.7	0.1		
		55	3.5	3.1	2.8	2.6	2.4	2.0	1.8	1.0		
	25	50	3.3	2.9	2.6	2.3	2.1	1.7	0.7	0.1		
		60	3.4	3.0	2.7	2.5	2.3	2.0	1.6	0.7		
	30	54	3.2	2.8	2.5	2.3	2.1	1.4	0.5	-		
		65	3.4	2.9	2.6	2.4	2.2	1.9	1.3	0.6		

Product specifications

Compact  
Standard  
Table  
Roller gear cam drive  
Wide angle  
Compact multi-index  
Flat  
Basic  
Parallel cam drive  
Linear  
Circular  
Option



## Characteristics

Descriptions	Characteristics
La stroke length mm	max.100
Lb stroke length mm	max.40
Internal weight of La stroke section (moa) kg	1.1
Internal weight of Lb stroke section (mob) kg	2.3
Product weight kg	15
Lubrication method	Grease lubrication

Descriptions	Characteristics
Allowable thrust force N of the input shaft	1200
Allowable radial force N for the input shaft	900
Moment of inertia of the input shaft kg·m <sup>2</sup>	$7.3 \times 10^{-4}$
Internal frictional torque (Tin) N·m	3.0
Repeatability mm	±0.02
Paint color	Silver

## Rated dynamic payload table

Stroke direction	Stroke length (mm)	Index angle (°)	Rated dynamic payload (kg)						
			Input shaft rotational speed (rpm)						
			20	30	40	50	60	80	100
La	10	22	5.0	4.2	3.7	3.3	2.9	1.5	0.5
		30	5.5	4.8	4.2	3.8	3.5	2.9	1.8
	20	30	4.5	3.8	3.3	2.9	2.6	1.1	0.3
		40	4.9	4.2	3.8	3.4	3.1	2.5	1.4
	30	37	4.3	3.7	3.2	2.8	2.5	1.0	0.2
		45	4.5	3.9	3.5	3.1	2.8	2.0	0.9
	40	42	4.2	3.5	3.1	2.7	2.2	0.8	0.1
		50	4.4	3.7	3.3	3.0	2.6	1.6	0.6
	50	47	4.1	3.5	3.0	2.6	2.1	0.7	-
		55	4.2	3.6	3.2	2.9	2.6	1.4	0.5
	60	52	4.0	3.4	3.0	2.6	1.9	0.6	-
		60	4.2	3.6	3.1	2.8	2.5	1.3	0.4
	70	58	4.0	3.4	3.0	2.6	2.0	0.7	-
		70	4.2	3.6	3.2	2.9	2.6	1.6	0.6
	80	65	4.0	3.4	3.0	2.7	2.2	0.8	0.1
		75	4.1	3.5	3.1	2.8	2.5	1.5	0.6
	90	75	4.0	3.5	3.1	2.7	2.4	1.1	0.3
		85	4.1	3.6	3.2	2.9	2.6	1.8	0.8
100	82	4.0	3.5	3.1	2.7	2.5	1.2	0.3	
	90	4.1	3.5	3.1	2.8	2.6	1.7	0.7	
Lb	10	27	4.7	4.1	3.6	3.2	2.9	2.0	0.4
		35	5.1	4.4	4.0	3.6	3.3	2.9	2.2
	20	38	4.3	3.8	3.3	3.0	2.7	1.4	0.1
		50	4.7	4.1	3.7	3.3	3.1	2.6	1.9
	30	46	4.1	3.6	3.2	2.8	2.6	0.9	-
		55	4.3	3.8	3.4	3.0	2.8	2.3	0.7
	40	54	4.0	3.5	3.1	2.8	2.5	0.6	-
		65	4.2	3.7	3.3	3.0	2.7	2.1	0.6

Product specifications

Compact  
Standard  
Table  
Wide angle  
Compact multi-index  
Flat  
Basic  
Parallel cam drive  
Pico and Pico size drive  
Linear  
Circular  
Option



# Dimensions

Product specifications

Compact

Standard

Table

Wide angle

Compact multi-index

Flat

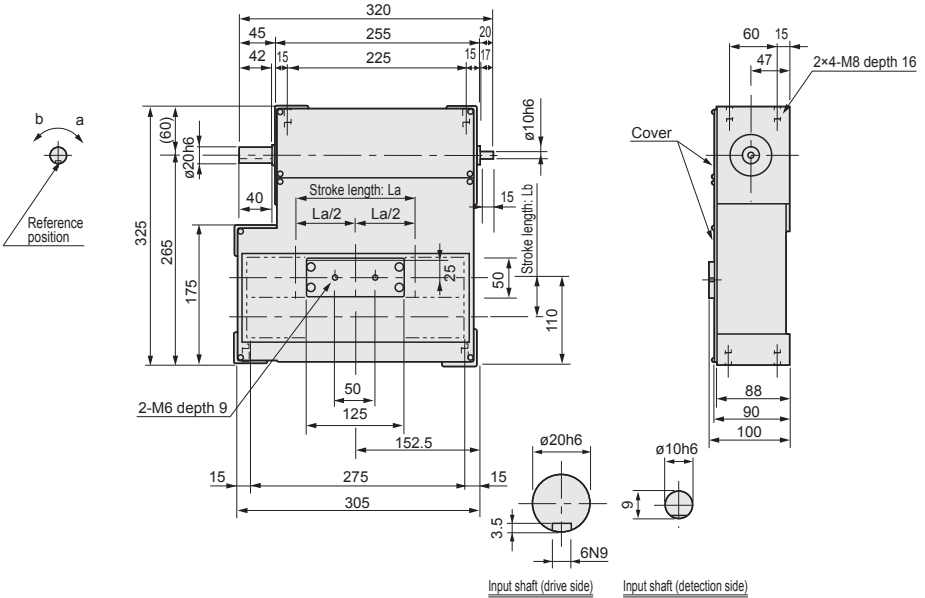
Basic

Parallel cam drive

Linear Circular Pick and Place drive

Option

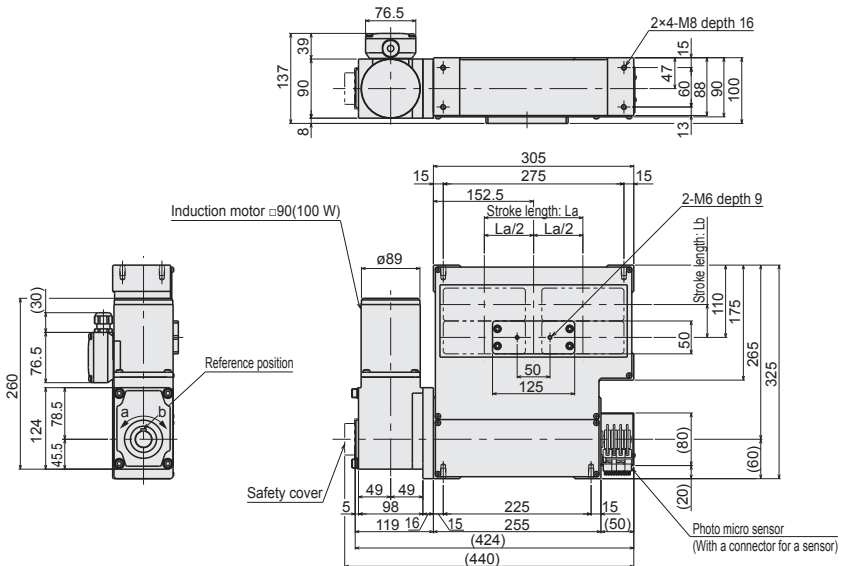
Roller gear cam drive



# Dimensions with options



Hollow shaft geared motor (100 W) + micro sensor



## Characteristics

Descriptions	Characteristics
La stroke length mm	max.150
Lb stroke length mm	max.50
Internal weight of La stroke section (moa) kg	1.8
Internal weight of Lb stroke section (mob) kg	3.8
Product weight kg	25
Lubrication method	Grease lubrication

Descriptions	Characteristics
Allowable thrust force N of the input shaft	2000
Allowable radial force N for the input shaft	1600
Moment of inertia of the input shaft kg·m <sup>2</sup>	$2.4 \times 10^{-3}$
Internal frictional torque (Tin) N·m	4.8
Repeatability mm	±0.02
Paint color	Silver

## Rated dynamic payload table

Stroke direction	Stroke length (mm)	Min. index angle (°)	Rated dynamic payload (kg)							
			Input shaft rotational speed (rpm)							
			10	20	30	40	50	60	70	80
La	10	21	8.8	7.0	5.9	5.2	4.5	4.0	3.5	2.6
	20	30	8.0	6.4	5.4	4.7	4.1	3.7	3.2	2.4
	30	36	7.6	6.0	5.1	4.4	3.9	3.4	3.0	2.1
	40	41	7.3	5.8	4.9	4.3	3.7	3.3	2.9	1.8
	50	46	7.2	5.7	4.8	4.2	3.7	3.2	2.7	1.6
	60	50	7.0	5.5	4.7	4.1	3.6	3.1	2.4	1.4
	70	54	6.9	5.5	4.6	4.0	3.5	3.1	2.3	1.3
	80	58	6.8	5.4	4.6	4.0	3.5	3.1	2.1	1.2
	90	60	6.7	5.3	4.5	3.9	3.4	3.0	1.8	0.9
	100	64	6.7	5.3	4.5	3.9	3.4	3.0	1.7	0.9
	110	71	6.7	5.3	4.5	3.9	3.5	3.1	2.1	1.1
	120	77	6.7	5.3	4.5	4.0	3.5	3.1	2.3	1.3
	130	84	6.7	5.3	4.6	4.0	3.5	3.2	2.6	1.6
	140	92	6.7	5.3	4.6	4.0	3.6	3.2	2.9	1.9
	150	99	6.7	5.3	4.6	4.1	3.6	3.3	2.9	2.0
Lb	10	27	8.3	6.6	5.7	5.1	4.6	4.1	3.7	3.4
	20	37	7.5	6.0	5.2	4.6	4.1	3.7	3.3	3.0
	30	45	7.2	5.7	4.9	4.4	3.9	3.5	3.2	2.8
	40	52	7.0	5.6	4.8	4.2	3.8	3.4	3.1	2.2
	50	58	6.8	5.4	4.7	4.1	3.7	3.3	3.0	1.6

Product specifications

Compact  
 Standard  
 Table  
 Wide angle  
 Compact multi-index  
 Flat  
 Basic  
 Parallel cam drive  
 Pica and Picas drive  
 Linear  
 Circular  
 Option





## Characteristics

Descriptions	Characteristics
La stroke length mm	max.200
Lb stroke length mm	max.60
Internal weight of La stroke section (moa) kg	3.6
Internal weight of Lb stroke section (mob) kg	6.9
Product weight kg	50
Lubrication method	Grease lubrication

Descriptions	Characteristics
Allowable thrust force N of the input shaft	2500
Allowable radial force N for the input shaft	2700
Moment of inertia of the input shaft kg·m <sup>2</sup>	$8.6 \times 10^{-3}$
Internal frictional torque (Tin) N·m	7.8
Repeatability mm	±0.02
Paint color	Silver

## Rated dynamic payload table

Stroke direction	Stroke length (mm)	Min. index angle (°)	Rated dynamic payload (kg)							
			Input shaft rotational speed (rpm)							
			10	20	30	40	50	60	70	80
La	10	20	14.0	11.1	9.4	8.2	7.1	6.2	5.5	4.7
	20	28	12.7	10.1	8.5	7.4	6.4	5.6	4.9	4.2
	30	33	11.9	9.4	7.9	6.8	5.9	5.2	4.5	3.3
	40	38	11.5	9.1	7.7	6.6	5.7	5.0	4.3	3.0
	50	43	11.2	8.9	7.5	6.5	5.6	4.9	4.3	3.0
	60	47	11.0	8.7	7.3	6.3	5.5	4.8	4.2	2.7
	70	50	10.8	8.5	7.2	6.2	5.3	4.6	4.0	2.3
	80	53	10.6	8.4	7.0	6.1	5.2	4.5	3.9	2.0
	90	57	10.5	8.3	7.0	6.0	5.2	4.5	3.9	2.0
	100	60	10.4	8.2	6.9	6.0	5.2	4.5	3.6	1.9
	110	62	10.3	8.1	6.8	5.9	5.1	4.4	3.2	1.5
	120	65	10.2	8.0	6.8	5.8	5.0	4.4	3.1	1.4
	130	68	10.1	8.0	6.7	5.8	5.0	4.4	3.0	1.4
	140	70	10.0	7.9	6.7	5.7	5.0	4.3	2.7	1.1
	150	73	10.0	7.9	6.6	5.7	4.9	4.3	2.6	1.1
	160	78	10.0	7.9	6.7	5.8	5.0	4.4	3.0	1.4
	170	83	10.0	7.9	6.7	5.8	5.1	4.4	3.3	1.6
	180	88	10.0	7.9	6.7	5.8	5.1	4.5	3.6	1.9
	190	94	10.0	7.9	6.8	5.9	5.2	4.6	4.1	2.3
	200	99	10.0	7.9	6.8	5.9	5.2	4.6	4.1	2.5
Lb	10	27	13.1	10.4	9.0	8.0	7.2	6.5	5.9	5.3
	20	36	11.7	9.4	8.1	7.1	6.4	5.7	5.1	4.6
	30	44	11.2	8.9	7.7	6.8	6.1	5.4	4.9	4.4
	40	51	10.8	8.6	7.4	6.6	5.9	5.3	4.7	4.3
	50	57	10.5	8.4	7.2	6.4	5.7	5.1	4.6	4.2
	60	63	10.3	8.2	7.1	6.3	5.6	5.0	4.5	4.1

Product specifications

Compact  
Standard  
Table  
Roller gear cam drive  
Wide angle  
Compact multi-index  
Flat  
Basic  
Parallel cam drive  
Pics and P-Base drive  
Linear  
Circular  
Option