

Electric actuator (motorless) Rod with built-in guide

EBR-04LE

Straight motor mounting

● Applicable motor capacity: 50 W

How to order

EBR - 04 L E - 00 - 06 0050 N NN - M H N N

A Body size
04 Body width 44 mm

B Motor
L None

C Motor mounting direction
E Straight mounting

D Screw lead
06 6 mm
12 12 mm

E Stroke length
0050 50 mm
(In 50 mm increments)
0400 400 mm

F Brake
N None

G Mounted motor specification
M Select the mounted motor specification from the table at right.
Y
P

H Motor capacity
H 50 W

I Origin sensor *1
N None
C Yes

J Limit sensor *1
N None
B Yes

Manufacturer	50 W
Mitsubishi Electric Corporation	M
OMRON Corporation	M
Sanyo Denki Co., Ltd.	M
Delta Electronics Co., Ltd.	M
YASKAWA Electric Corporation	Y
Keyence Corporation	Y
Panasonic Corporation	P
Bosch Rexroth Corporation	P

*1 Origin sensor and limit sensor are available as a set.
As it is both-or-nothing, either select "None" or "Yes" for both.

* Refer to the verso for the motor model number.

Specifications

Applicable motor capacity	50 W servo motor	
Drive method	Ball screw ϕ 10	
Stroke length	mm 50 to 400	
Screw lead	mm 6	12
Max. load capacity *1	kg Horizontal	20
	Vertical	5
Max. speed	mm/s 300	600
Rated thrust *1	N 141	71
Repeatability	mm \pm 0.01	
Lost motion	mm 0.1 or less	
Operating ambient temperature, humidity	0 to 40°C (no freezing)	
	35 to 80% RH (no condensation)	
Storage ambient temperature, humidity	-10 to 50°C (no freezing)	
	35 to 80% RH (no condensation)	
Atmosphere	No corrosive gas, explosive gas, or dust	

* Refer to page 15 for the allowable applied load for the overhang amount.

*1 Rated thrust and max. load capacity are guideline values assuming that the motor mounted will output the rated torque.

Stroke length and max. speed

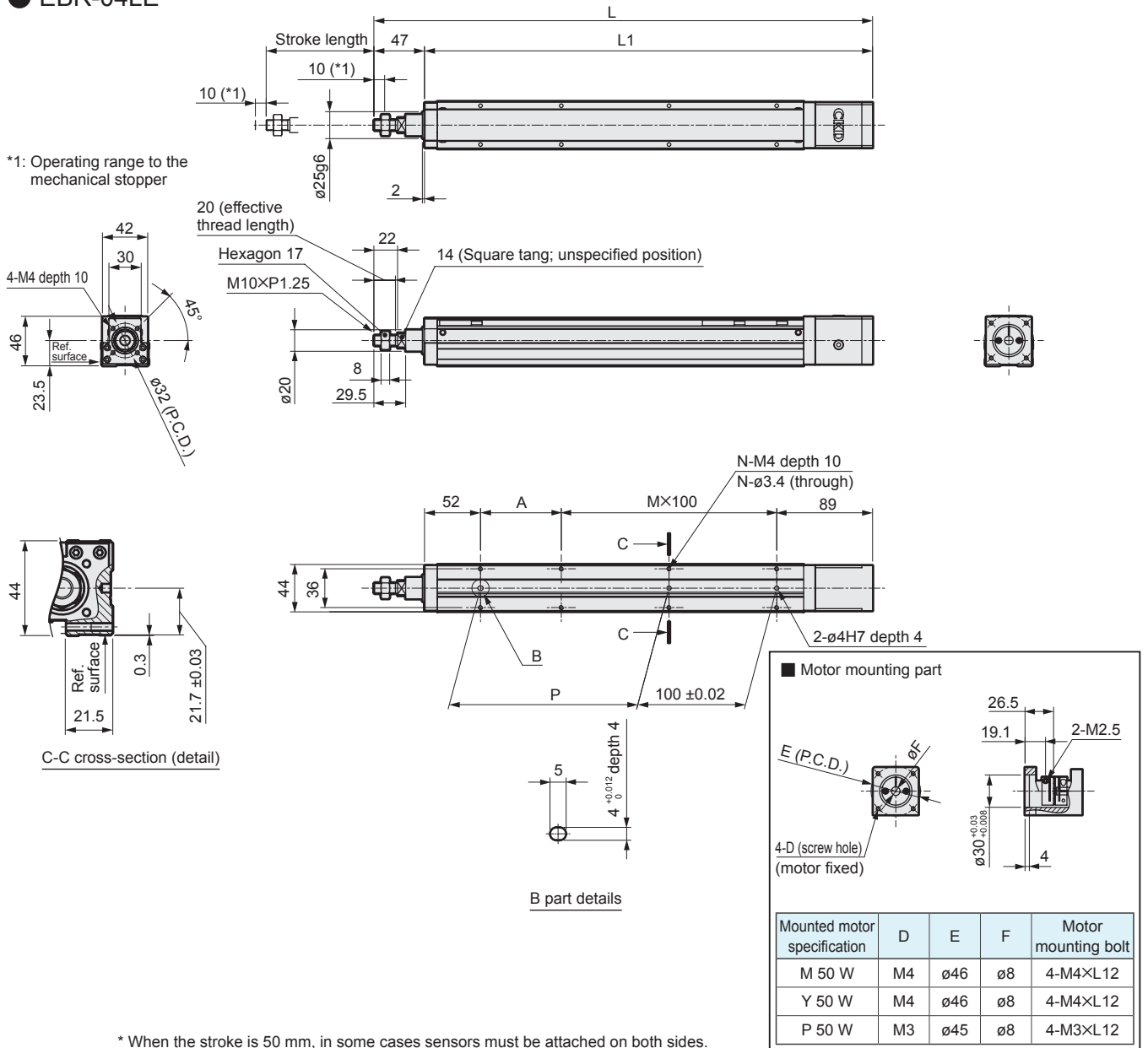
(mm/s)

Stroke length \ Screw lead	50 to 250	300	350	400
6	300	250		
12	600	510		

* Max. speed is when the motor mounted by the customer can output rotation speed of 3000 rpm.
The max. speed is restricted by the stroke. Do not move at speeds exceeding the restrictions.

Dimensions Straight motor mounting

● EBR-04LE



Stroke code	0050	0100	0150	0200	0250	0300	0350	0400
Stroke length (mm)	50	100	150	200	250	300	350	400
L	313	363	413	463	513	563	613	663
L1	266	316	366	416	466	516	566	616
A	25	75	25	75	25	75	25	75
M	1	1	2	2	3	3	4	4
N	6	6	8	8	10	10	12	12
P	25	75	125	175	225	275	325	375
Weight (kg)	1.1	1.2	1.4	1.6	1.7	1.9	2.0	2.2

List of attachments

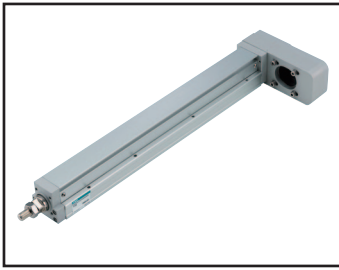
[Motor mounting parts]

Mounted motor specification	Coupling	Motor mounting bolt	
		Size	Quantity
M	Assembled at shipment	M4	4
Y		M4	4
P		M3	4

[Origin sensor, limit sensor]

Sensor		
Manufacturer	Model	Quantity included
KITA	KT-32N-2M	3

* Refer to catalog No. CB-055A for sensor specifications.



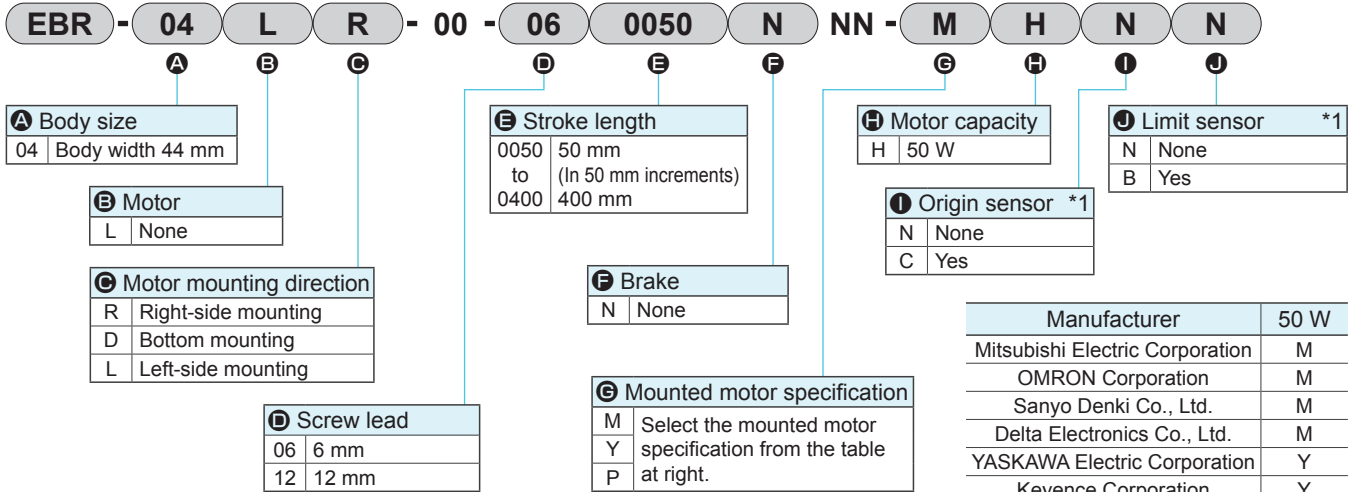
Electric actuator (motorless) Rod with built-in guide

EBR-04L*

Motor mounting on side/bottom

● Applicable motor capacity: 50 W

How to order



*1 Origin sensor and limit sensor are available as a set.
As it is both-or-nothing, either select "None" or "Yes" for both.

* Refer to the verso for the motor model number.

Specifications

Applicable motor capacity	50 W servo motor	
Drive method	Ball screw ϕ 10	
Stroke length mm	50 to 400	
Screw lead mm	6	12
Max. load capacity kg *1	Horizontal	20
	Vertical	5
Max. speed mm/s	300	600
Rated thrust *1 N	141	71
Repeatability mm	± 0.01	
Lost motion mm	0.1 or less	
Operating ambient temperature, humidity	0 to 40°C (no freezing)	
	35 to 80% RH (no condensation)	
Storage ambient temperature, humidity	-10 to 50°C (no freezing)	
	35 to 80% RH (no condensation)	
Atmosphere	No corrosive gas, explosive gas, or dust	

* Refer to page 15 for the allowable applied load for the overhang amount.

*1 Rated thrust and max. load capacity are guideline values assuming that the motor mounted will output the rated torque.

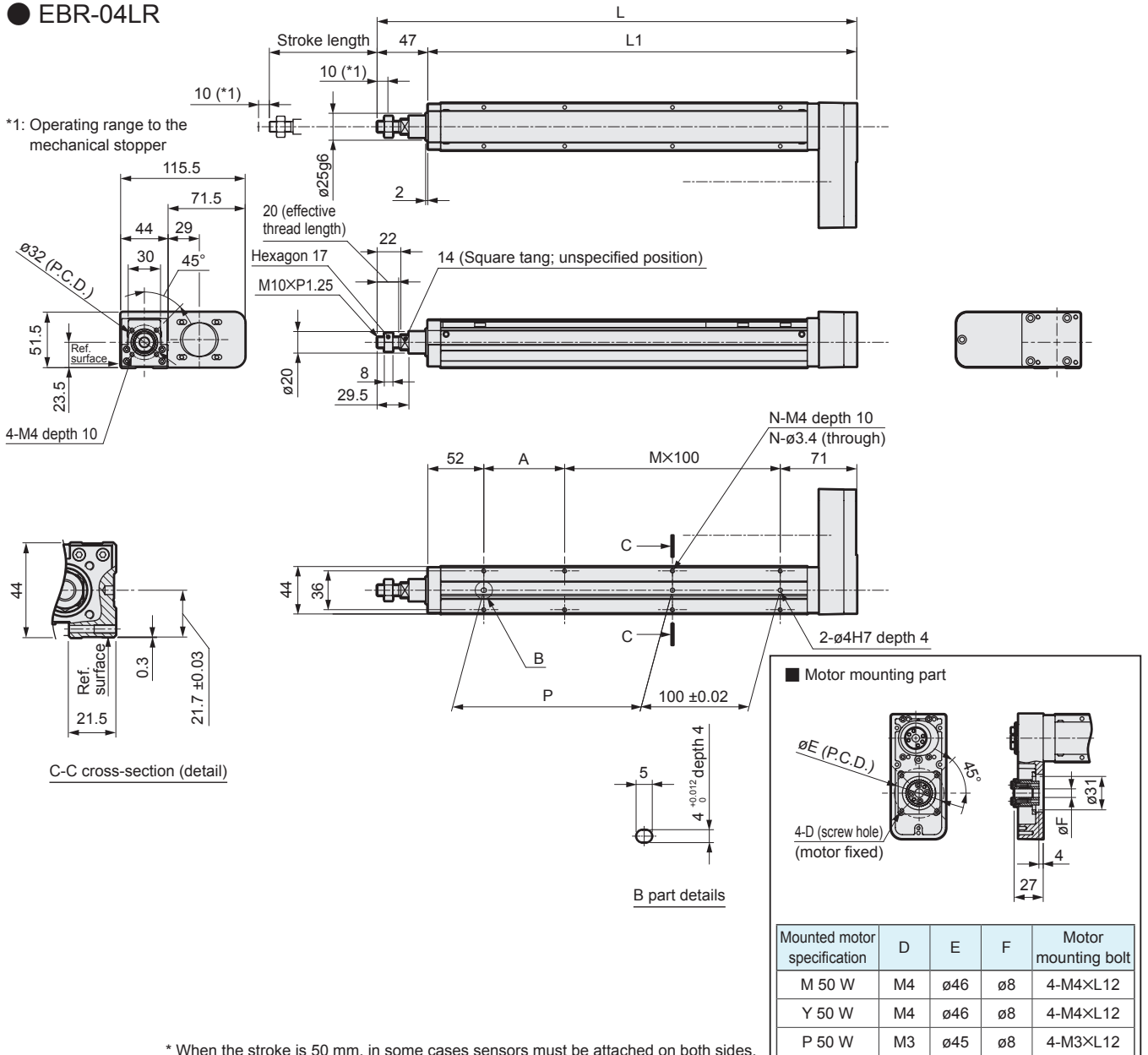
Stroke length and max. speed

		(mm/s)			
Screw lead	Stroke length	50 to 250	300	350	400
	6		300		250
12		600		510	

* Max. speed is when the motor mounted by the customer can output rotation speed of 3000 rpm.
The max. speed is restricted by the stroke. Do not move at speeds exceeding the restrictions.

Dimensions Motor right-side mounting

● EBR-04LR



Stroke code	0050	0100	0150	0200	0250	0300	0350	0400
Stroke length (mm)	50	100	150	200	250	300	350	400
L	295	345	395	445	495	545	595	645
L1	248	298	348	398	448	498	548	598
A	25	75	25	75	25	75	25	75
M	1	1	2	2	3	3	4	4
N	6	6	8	8	10	10	12	12
P	25	75	125	175	225	275	325	375
Weight (kg)	1.3	1.5	1.6	1.8	1.9	2.1	2.2	2.4

List of attachments

[Motor mounting parts]

Mounted motor specification	Timing belt, pulley	Motor mounting bolt	
		Size	Quantity
M	Attached at shipment	M4	4
Y		M4	4
P		M3	4

[Origin sensor, limit sensor]

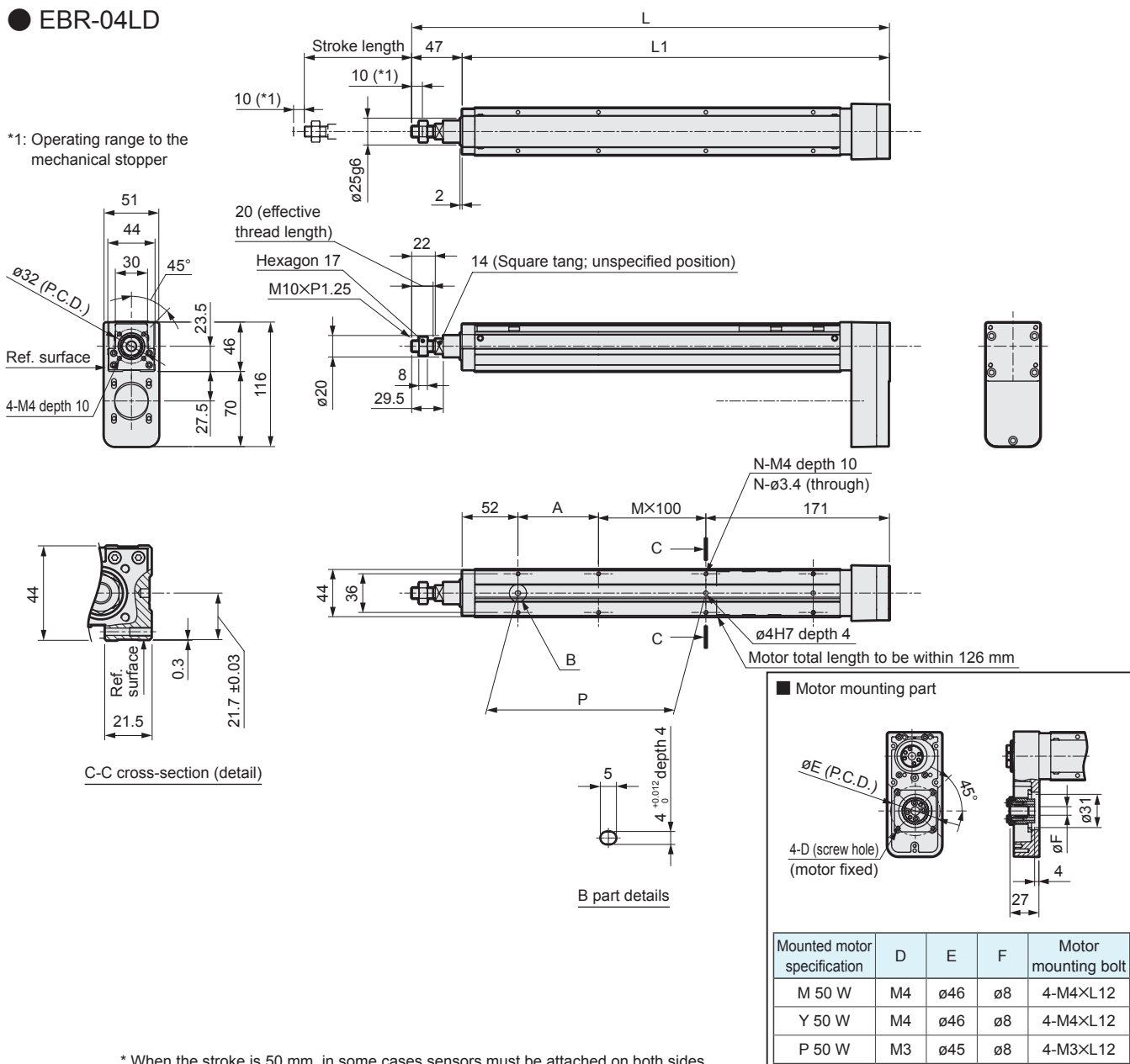
Sensor		
Manufacturer	Model	Quantity included
KITA	KT-32N-2M	3

* Refer to catalog No. CB-055A for sensor specifications.

EBR-04L*

Dimensions Motor bottom mounting

EBR-04LD



Stroke code	0050	0100	0150	0200	0250	0300	0350	0400
Stroke length (mm)	50	100	150	200	250	300	350	400
L	295	345	395	445	495	545	595	645
L1	248	298	348	398	448	498	548	598
A	25	75	25	75	25	75	25	75
M	0	0	1	1	2	2	3	3
N	4	4	6	6	8	8	10	10
P	25	75	125	175	225	275	325	375
Weight (kg)	1.3	1.5	1.6	1.8	1.9	2.1	2.2	2.4

List of attachments

[Motor mounting parts]

Mounted motor specification	Timing belt, pulley	Motor mounting bolt	
		Size	Quantity
M	Attached at shipment	M4	4
Y		M4	4
P		M3	4

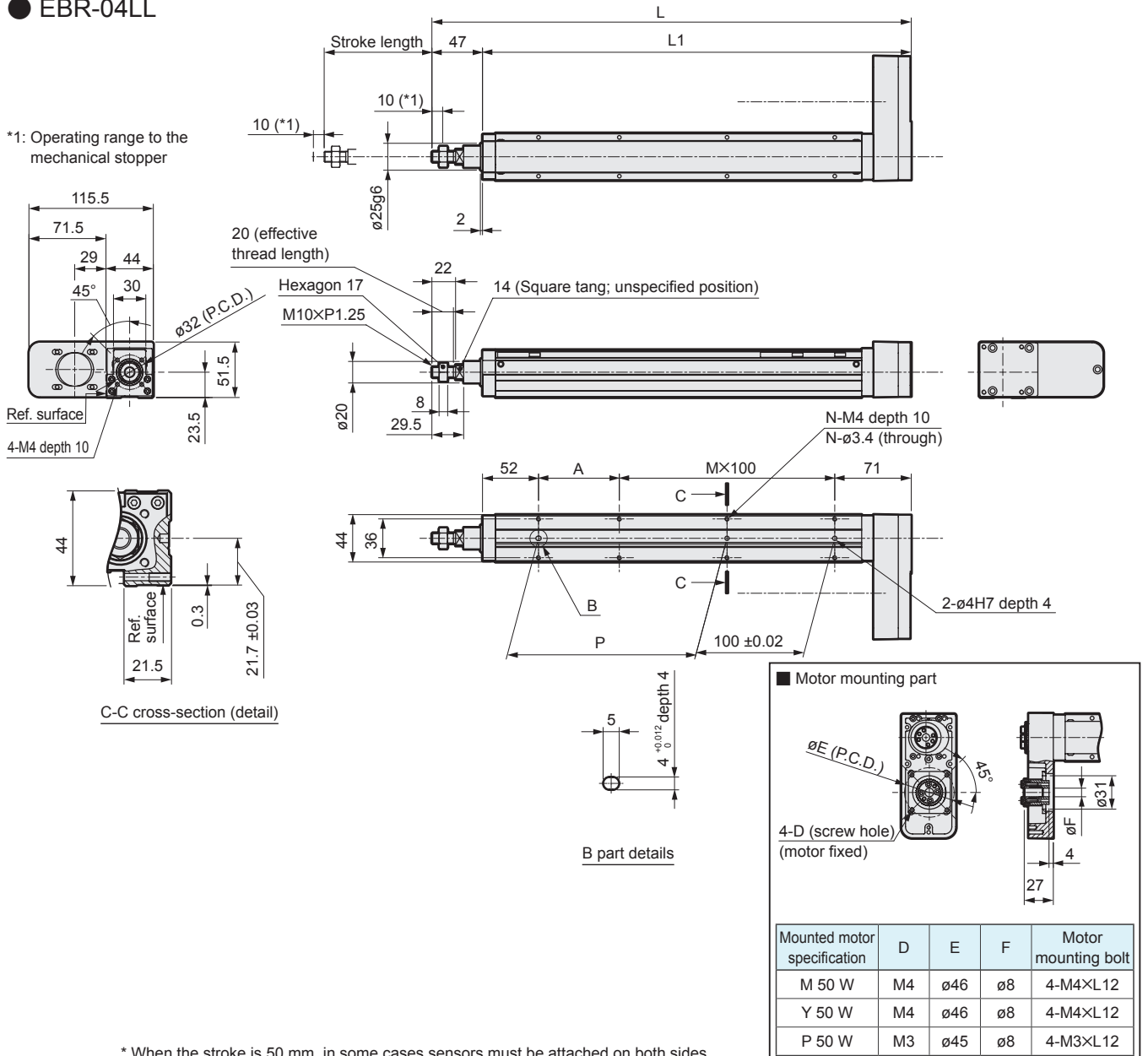
[Origin sensor, limit sensor]

Sensor		
Manufacturer	Model	Quantity included
KITA	KT-32N-2M	3

* Refer to catalog No. CB-055A for sensor specifications.

Dimensions Motor left-side mounting

● EBR-04LL



Stroke code	0050	0100	0150	0200	0250	0300	0350	0400
Stroke length (mm)	50	100	150	200	250	300	350	400
L	295	345	395	445	495	545	595	645
L1	248	298	348	398	448	498	548	598
A	25	75	25	75	25	75	25	75
M	1	1	2	2	3	3	4	4
N	6	6	8	8	10	10	12	12
P	25	75	125	175	225	275	325	375
Weight (kg)	1.3	1.5	1.6	1.8	1.9	2.1	2.2	2.4

List of attachments

[Motor mounting parts]

Mounted motor specification	Timing belt, pulley	Motor mounting bolt	
		Size	Quantity
M	Attached at shipment	M4	4
Y		M4	4
P		M3	4

[Origin sensor, limit sensor]

Sensor		
Manufacturer	Model	Quantity included
KITA	KT-32N-2M	3

*Refer to catalog No. CB-055A for sensor specifications.