

# Electric actuator Belt type

## ETV-05 Series

Selectable motor mounting  
 ● Applicable motor capacity: 100 W

### How to order

**ETV - 05 - 40 010 - U M 1 X N N N N**

**A** Body size  
 05 Body width 50 mm

**B** Lead equivalent  
 40 40 mm

**C** Stroke  
 010 100 mm  
 to (In 50 mm increments)  
 080 800 mm

**D** Motor mounting direction  
 U Top mounting  
 D Bottom mounting

**E** Mounted motor specification  
 M Select mounted motor specifications from the table below.  
 Y  
 P

**F** Motor capacity  
 1 100 W

**G** Driving belt  
 X Standard (rubber)

**H** Origin sensor (1 pc.) \*1\*2  
 N None  
 C Outside Motor side  
 D Outside Opposite motor side

**I** Limit sensor (2 pcs.) \*1\*2  
 N None  
 B Outside

**K** Positioning pin hole  
 N None  
 P Yes

**J** Grease nipple \*3  
 N None (body mounting direction: standard)

Manufacturer	100 W
Mitsubishi Electric Corporation	M
Delta Electronics Co., Ltd.	M
Sanyo Denki Co., Ltd.	M
YASKAWA Electric Corporation	Y
Keyence Corporation	Y
Panasonic Corporation	P
OMRON Corporation	M
Bosch Rexroth Corporation	P

\*1 Origin sensor and limit sensor are a set. Select "None" for both of them if selecting it for either.  
 \*2 The user can adjust the sensor position. (Included at shipment)  
 \*3 "Body mounting direction: standard" refers to bottom side mounting.

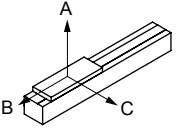
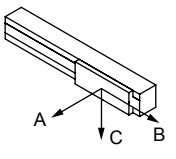
\* For the motor model No., refer to page 187.

### Specifications

Applicable motor capacity	100 W servo motor	
Drive method	Belt width 9 mm	
Stroke mm	100 to 800	
Lead equivalent mm	40	
Max. load capacity *1	Horizontal kg	3
	Vertical kg	-
Max. speed mm/s	2000	
Rated thrust *1 N	42	
Repeatability mm	±0.08	
Lost motion	0.2 mm or less	
Operating ambient temperature, humidity	0 to 40°C (no freezing) 35 to 80% RH (no condensation)	
Storage ambient temperature, humidity	-10 to 50°C (no freezing) 35 to 80% RH (no condensation)	
Atmosphere	No corrosive gas, explosive gas, or dust	

\*1 Rated thrust and max. load capacity are guideline values assuming that the motor mounting can output the rated torque.

### Allowable overhang length

		(mm)				
Horizontal	Lead equivalent	Weight kg	A	B	C	
	40	3	55	20	30	
Wall hanging	Lead equivalent	Weight kg	A	B	C	
	40	3	29	21	57	

\* When using with suspension, select 1/3 of the max. load capacity and allowable overhang length. For the overhang length to the center of gravity of load, use values within the A, B, and C directions.

\* The overhang length when the travel life is 5,000 km.

\* Refer to page 230 for details.

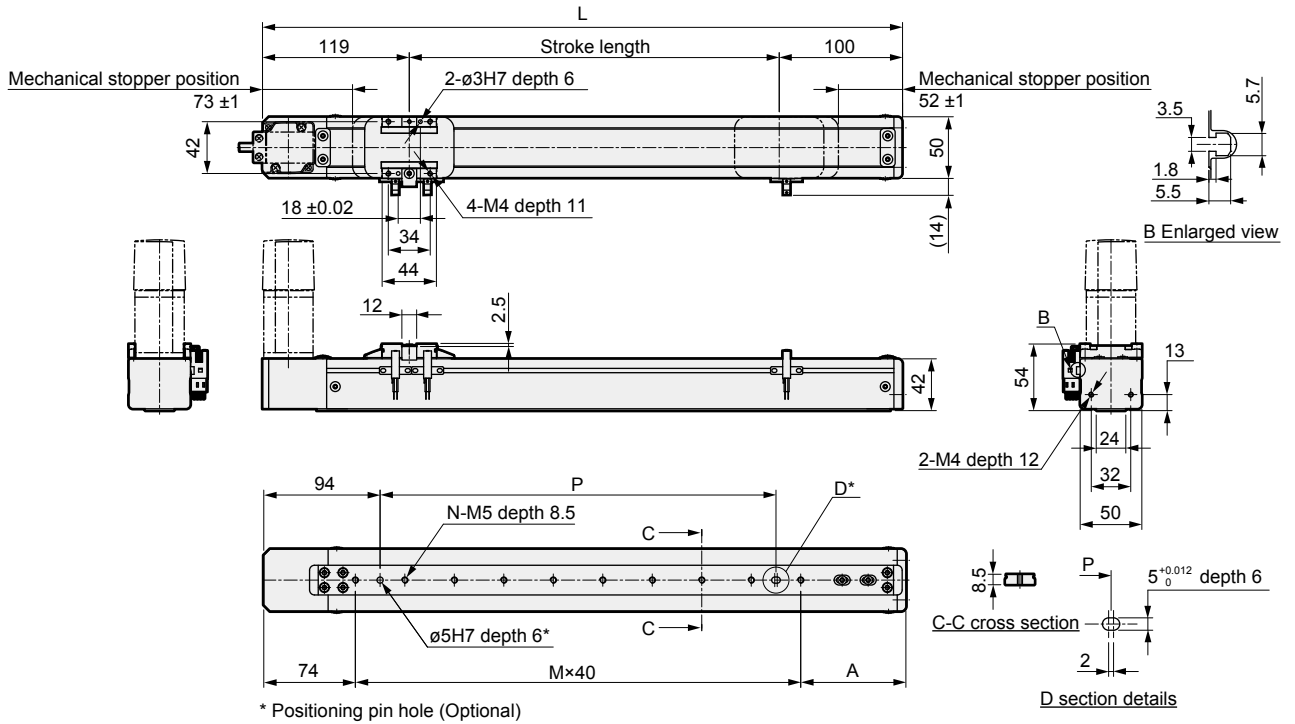
### Stroke and max. speed

		(mm/s)
Stroke	100 to 800	
Lead equivalent	40	2000

\* The max. speed is the speed when the motor mounted by the customer can output a rotation speed of 3000 rpm.

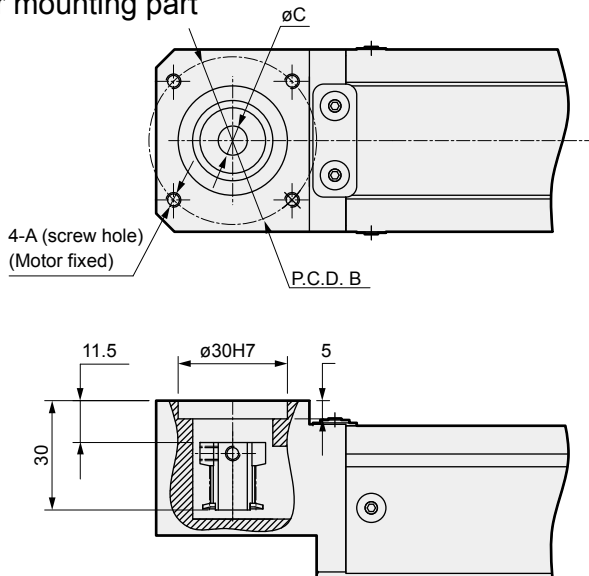
### Dimensions Top motor mounting

#### ● ETV-05-\*\*\*\*-U



Stroke (mm)	100	150	200	250	300	350	400	450	500	550	600	650	700	750	800
L	319	369	419	469	519	569	619	669	719	769	819	869	919	969	1019
A	85	95	65	75	85	95	65	75	85	95	65	75	85	95	65
M	4	5	7	8	9	10	12	13	14	15	17	18	19	20	22
N	5	6	8	9	10	11	13	14	15	16	18	19	20	21	23
P	120	160	240	280	320	360	440	480	520	560	640	680	720	760	800
Weight (kg)	2.2	2.3	2.4	2.5	2.7	2.8	2.8	3.0	3.1	3.2	3.3	3.4	3.5	3.6	3.7

#### Motor mounting part



Mounted motor specification	A	B	C	Motor mounting bolt
M 100 W	M4	ø46	ø8	4-M4 × L12
Y 100 W	M4	ø46	ø8	4-M4 × L12
P 100 W	M3	ø45	ø8	4-M3 × L12

#### List of attachments

##### [Motor mounting parts]

Mounted motor specification	Timing belt, pulley	Motor size	Motor mounting bolt	
			Size	Quantity
M	Included at shipment	100 W	M4	2
Y			M4	2
P			M3	4

##### [Origin sensor, limit sensor]

Manufacturer	Model	Quantity
OMRON Corporation	EE-SX672	3

\* Refer to page 236 for sensor specifications.

EBS

EBR

ETS

ECS

ETV

ECV

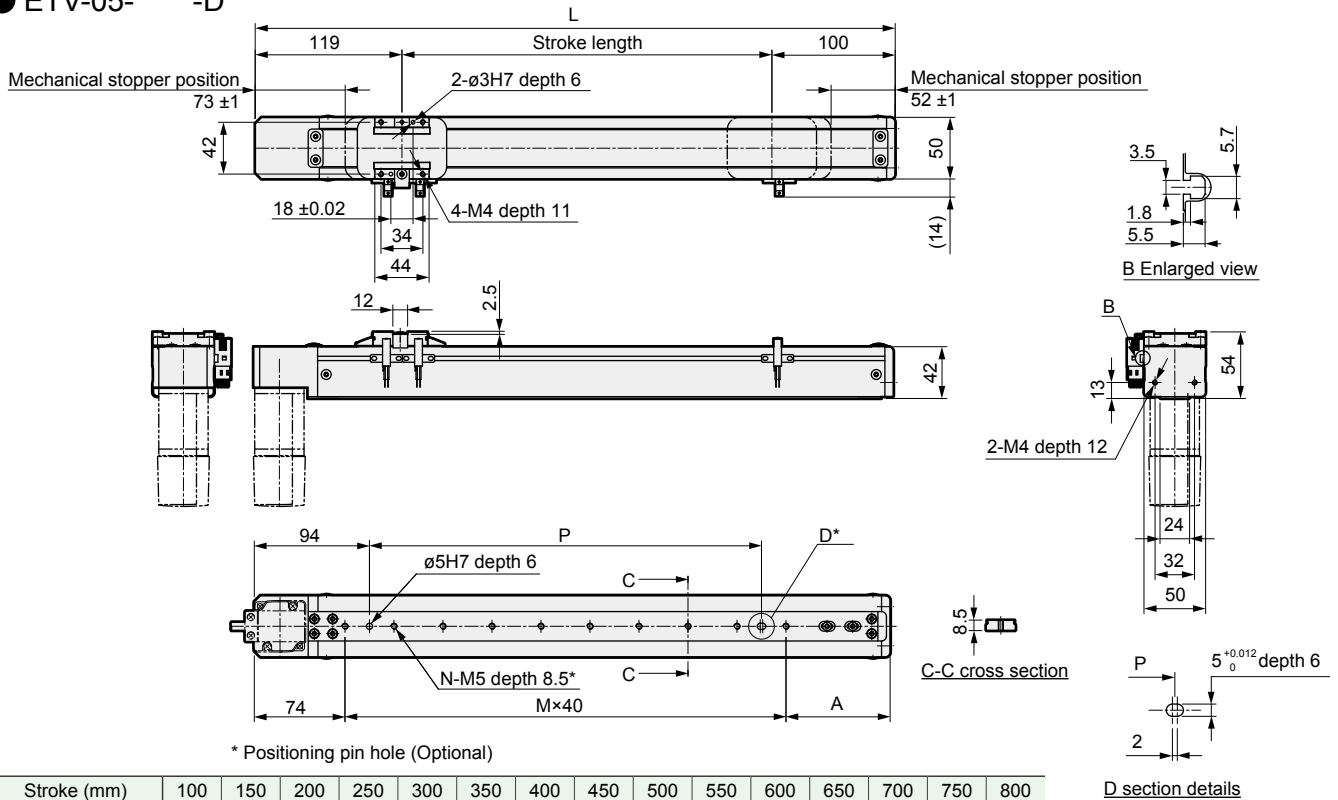
EKS

Safety precautions

# ETV-05 Series

## Dimensions Bottom motor mounting

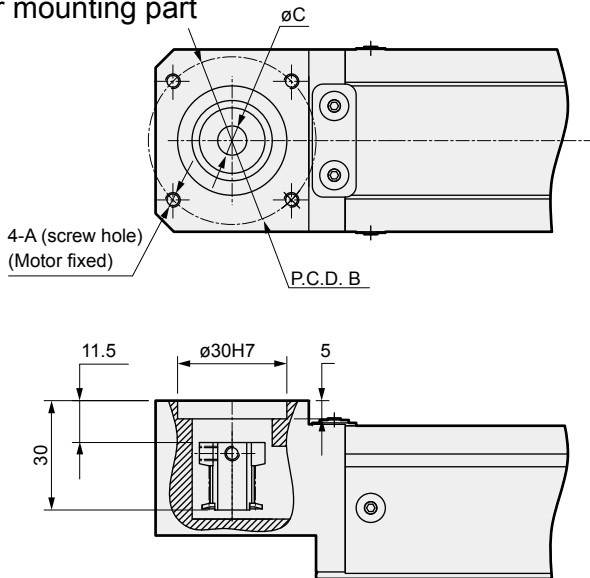
### ● ETV-05-\*\*\*\*\*-D



\* Positioning pin hole (Optional)

Stroke (mm)	100	150	200	250	300	350	400	450	500	550	600	650	700	750	800
L	319	369	419	469	519	569	619	669	719	769	819	869	919	969	1019
A	85	95	65	75	85	95	65	75	85	95	65	75	85	95	65
M	4	5	7	8	9	10	12	13	14	15	17	18	19	20	22
N	5	6	8	9	10	11	13	14	15	16	18	19	20	21	23
P	120	160	240	280	320	360	440	480	520	560	640	680	720	760	800
Weight (kg)	2.2	2.3	2.4	2.5	2.7	2.8	2.8	3.0	3.1	3.2	3.3	3.4	3.5	3.6	3.7

### Motor mounting part



Mounted motor specification		A	B	C	Motor mounting bolt
M	100 W	M4	ø46	ø8	4-M4 × L12
Y	100 W	M4	ø46	ø8	4-M4 × L12
P	100 W	M3	ø45	ø8	4-M3 × L12

### List of attachments

#### [Motor mounting parts]

Mounted motor specification	Timing belt, pulley	Motor size	Motor mounting bolt	
			Size	Quantity
M	Included at shipment	100 W	M4	2
Y			M4	2
P			M3	4

#### [Origin sensor, limit sensor]

Manufacturer	Model	Quantity
OMRON Corporation	EE-SX672	3

\* Refer to page 236 for sensor specifications.

MEMO

EBS

EBR

ETS

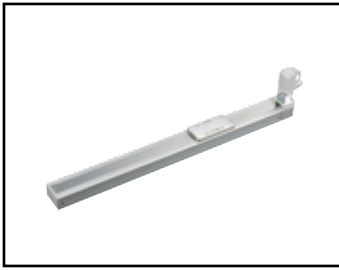
ECS

ETV

ECV

EKS

Safety  
precautions



Electric actuator Belt type

# ETV-06 Series

Selectable motor mounting

● Applicable motor capacity: 100 W

## How to order

ETV - 06 - 40 010 - U M 1 X N N N N

A B C D E F G H I J K

<b>A</b> Body size	<b>E</b> Mounted motor specification	<b>H</b> Origin sensor (1 pc.) *1*2	<b>K</b> Positioning pin hole
06 Body width 65 mm	M Select mounted motor specifications from the table below.	N None	N None
<b>B</b> Lead equivalent	<b>F</b> Motor capacity	C Outside Motor side	P Yes
40 40 mm	1 100 W	D Outside Opposite motor side	
<b>C</b> Stroke	<b>G</b> Driving belt	<b>I</b> Limit sensor (2 pcs.) *1*2	<b>J</b> Grease nipple *3*4
010 100 mm to (In 50 mm increments) 080 800 mm	X Standard (rubber)	N None	N None (body mounting direction: standard)
<b>D</b> Motor mounting direction		B Outside	D None (body mounting direction: bottom side)
U Top mounting			
D Bottom mounting			

Manufacturer	100 W
Mitsubishi Electric Corporation	M
Delta Electronics Co., Ltd.	M
Sanyo Denki Co., Ltd.	M
YASKAWA Electric Corporation	Y
Keyence Corporation	Y
Panasonic Corporation	P
OMRON Corporation	M
Bosch Rexroth Corporation	P

- \*1 Origin sensor and limit sensor are a set. Select "None" for both of them if selecting it for either.
- \*2 The user can adjust the sensor position. (Included at shipment)
- \*3 Select the body mounting direction. "N" (standard top side ø4.5 spot face) or "D" (M5 from bottom side)
- \*4 "Body mounting direction: standard" refers to bottom side mounting.

\* For the motor model No., refer to page 187.

## Specifications

Applicable motor capacity	100 W servo motor	
Drive method	Belt width 12 mm	
Stroke mm	100 to 800	
Lead equivalent mm	40	
Max. load capacity *1	Horizontal kg	3
	Vertical kg	-
Max. speed mm/s	2000	
Rated thrust *1 N	42	
Repeatability mm	±0.08	
Lost motion	0.2 mm or less	
Operating ambient temperature, humidity	0 to 40°C (no freezing) 35 to 80% RH (no condensation)	
Storage ambient temperature, humidity	-10 to 50°C (no freezing) 35 to 80% RH (no condensation)	
Atmosphere	No corrosive gas, explosive gas, or dust	

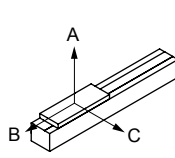
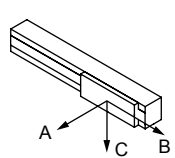
\*1 Rated thrust and max. load capacity are guideline values assuming that the motor mounting can output the rated torque.

## Stroke and max. speed

	Stroke	(mm/s)
Lead equivalent	100 to 800	
40	2000	

\* The max. speed is the speed when the motor mounted by the customer can output a rotation speed of 3000 rpm.

## Allowable overhang length

		(mm)			
Horizontal	Lead equivalent	Weight kg	A	B	C
	40	3	210	60	110
Wall hanging	Lead equivalent	Weight kg	A	B	C
	40	3	120	80	220

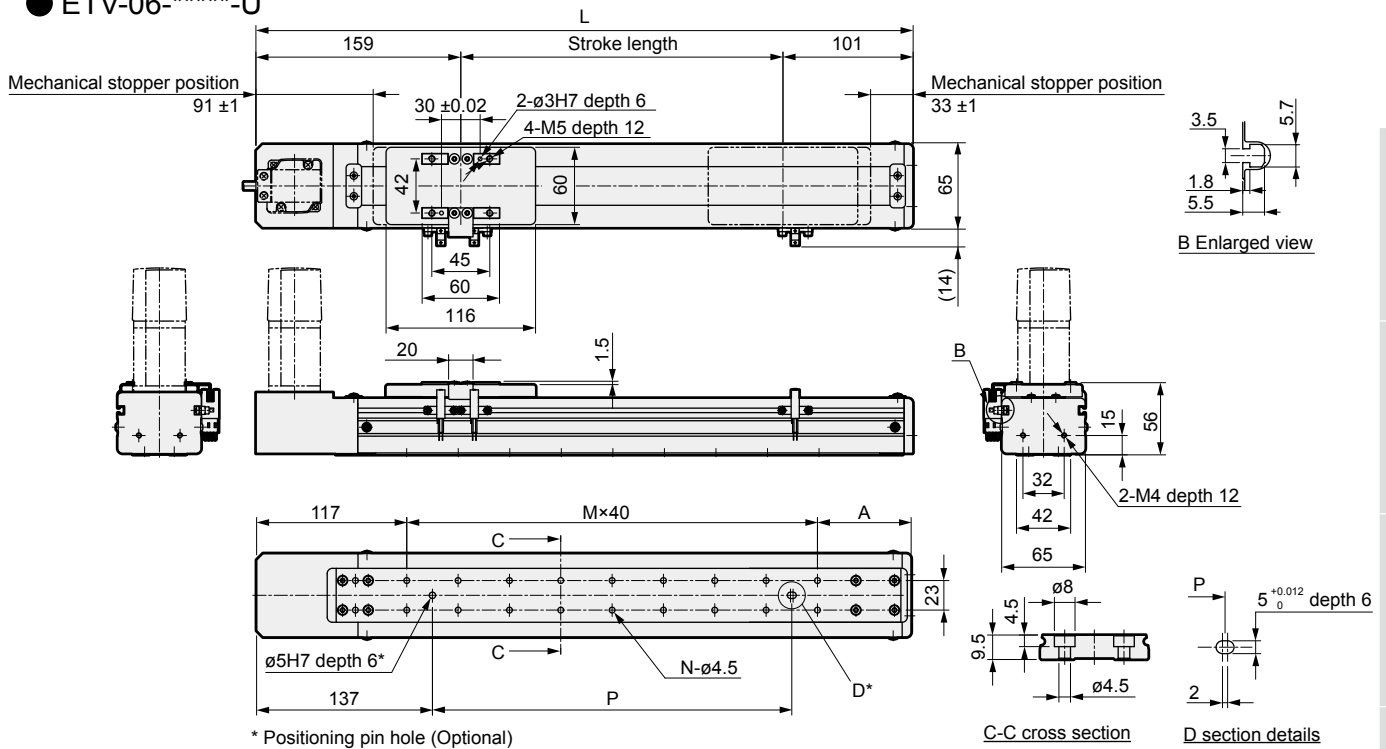
\* When using with suspension, select 1/3 of the max. load capacity and allowable overhang length. For the overhang length to the center of gravity of load, use values within the A, B, and C directions.

\* The overhang length when the travel life is 5,000 km.

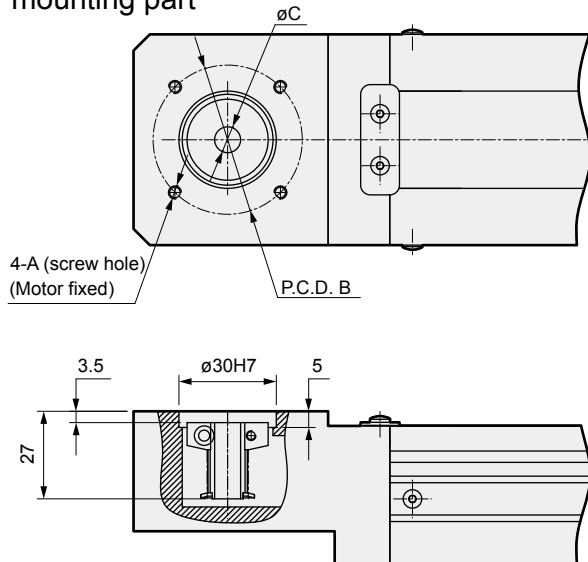
\* Refer to page 230 for details.

### Dimensions Top motor mounting

#### ● ETV-06-\*\*\*\*-U



### Motor mounting part



Mounted motor specification	A	B	C	Motor mounting bolt
M 100 W	M4	ø46	ø8	4-M4 × L12
Y 100 W	M4	ø46	ø8	4-M4 × L12
P 100 W	M3	ø45	ø8	4-M3 × L12

### List of attachments

#### [Motor mounting parts]

Mounted motor specification	Timing belt, pulley	Motor size	Motor mounting bolt	
			Size	Quantity
M	Included at shipment	100 W	M4	2
Y			M4	2
P			M3	4

#### [Origin sensor, limit sensor]

Manufacturer	Model	Quantity
OMRON Corporation	EE-SX672	3

\* Refer to page 236 for sensor specifications.

EBS

EBR

ETS

ECS

ETV

ECV

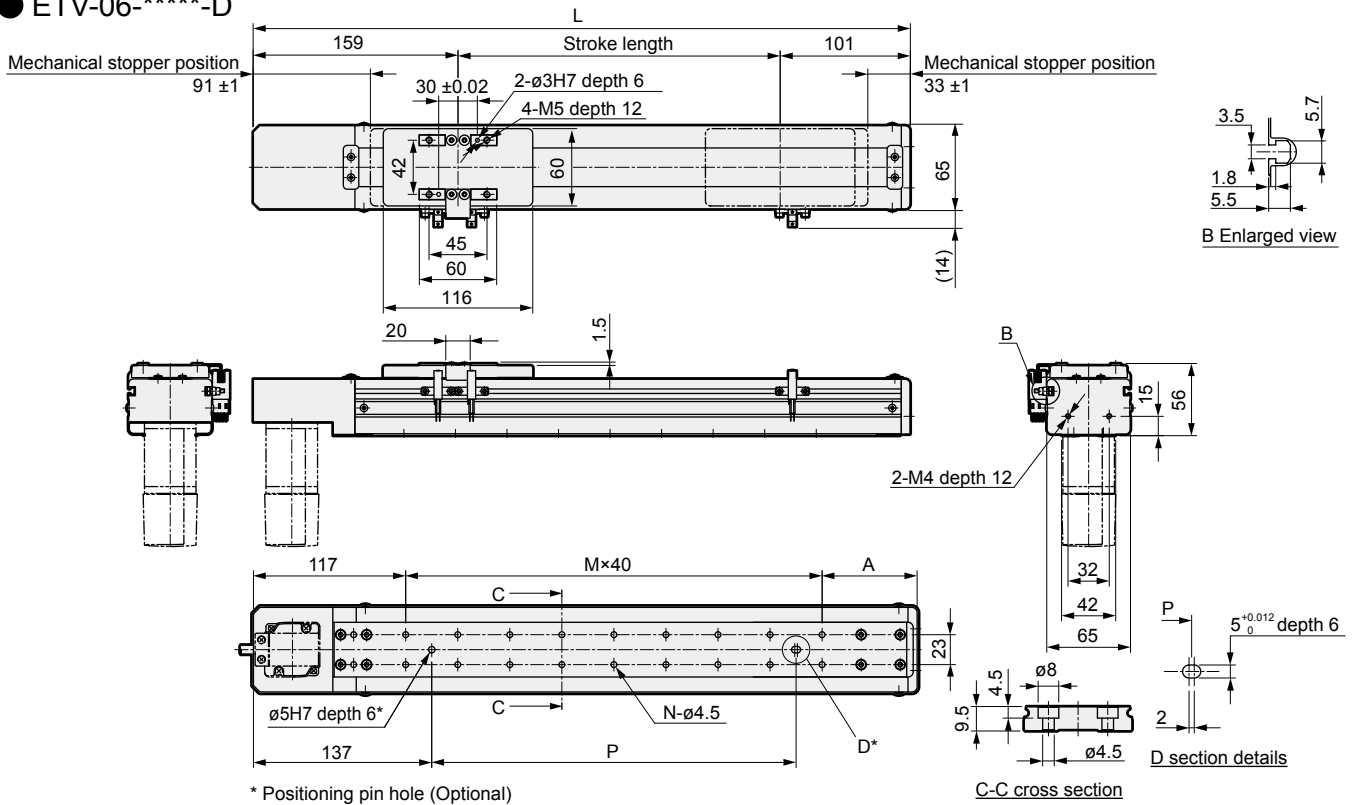
EKS

Safety precautions

# ETV-06 Series

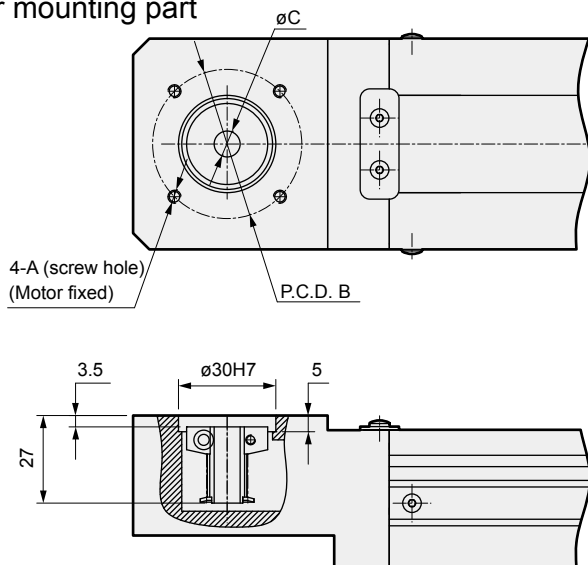
## Dimensions Bottom motor mounting

### ● ETV-06-\*\*\*\*\*-D



Stroke (mm)	100	150	200	250	300	350	400	450	500	550	600	650	700	750	800
L	360	410	460	510	560	610	660	710	760	810	860	910	960	1010	1060
A	83	93	63	73	83	93	63	73	83	93	63	73	83	93	63
M	4	5	7	8	9	10	12	13	14	15	17	18	19	20	22
N	10	12	16	18	20	22	26	28	30	32	36	38	40	42	46
P	120	160	240	280	320	360	440	480	520	560	640	680	720	760	840
Weight (kg)	2.5	2.6	2.8	3.0	3.3	3.4	3.5	3.7	3.9	4.1	4.2	4.4	4.6	4.8	4.9

### Motor mounting part



Mounted motor specification		A	B	C	Motor mounting bolt
M	100 W	M4	ø46	ø8	4-M4 × L12
Y	100 W	M4	ø46	ø8	4-M4 × L12
P	100 W	M3	ø45	ø8	4-M3 × L12

## List of attachments

### [Motor mounting parts]

Mounted motor specification	Timing belt, pulley	Motor size	Motor mounting bolt	
			Size	Quantity
M	Included at shipment	100 W	M4	2
Y			M4	2
P			M3	4

### [Origin sensor, limit sensor]

Manufacturer	Model	Quantity
OMRON Corporation	EE-SX672	3

\* Refer to page 236 for sensor specifications.

MEMO

EBS

EBR

ETS

ECS

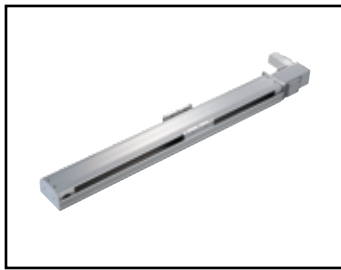
**ETV**

ECV

EKS

Safety  
precautions





# Electric actuator Belt type

## ETV-10 Series

Selectable motor mounting  
 ● Applicable motor capacity: 100 W

### How to order

ETV - 10 - 32 - 010 - R M 1 X N N N N

**A** Body size  
 10 Body width 102 mm

**B** Lead equivalent  
 32 32 mm

**C** Stroke  
 010 to 255 (In 50 mm increments)  
 100 mm to 2550 mm

**D** Motor mounting direction \*5

R	Right mounting
S	Top right mounting
T	Bottom right mounting
L	Left mounting
V	Top left mounting
W	Bottom left mounting

**E** Mounted motor specification

M	Select mounted
Y	motor specifications
P	from the table below.

**F** Motor capacity  
 1 100 W

**G** Driving belt  
 X Standard (rubber)  
 L Low dust generation (urethane)

**H** Origin sensor (1 pc.) \*1\*2\*3

N	None
C	Outside Motor side
D	Outside Opposite motor side

**I** Limit sensor (2 pcs.) \*1\*2\*3

N	None
B	Outside

**J** Grease nipple \*3\*4\*5

N	None (body mounting direction: standard)
R	Clockwise
L	Counterclockwise

**K** Positioning pin hole

N	None
P	Yes

Manufacturer	100 W
Mitsubishi Electric Corporation	M
Delta Electronics Co., Ltd.	M
Sanyo Denki Co., Ltd.	M
YASKAWA Electric Corporation	Y
Keyence Corporation	Y
Panasonic Corporation	P
OMRON Corporation	M
Bosch Rexroth Corporation	P

- \*1 Origin sensor and limit sensor are a set. Select "None" for both of them if selecting it for either.
- \*2 The user can adjust the sensor position. (Included at shipment)
- \*3 Contact CKD if you want to use the origin sensor, limit sensor, and grease nipple in the same direction.
- \*4 "Body mounting direction: standard" means that both top side and bottom side mounting are possible.
- \*5 When motor mounting direction is "R", "S", or "T", grease nipple cannot be set to "R". When motor mounting direction is "L", "V", or "W", grease nipple cannot be set to "L".

\* For the motor model No., refer to page 187.

### Specifications

Applicable motor capacity	100 W servo motor
Drive method	Belt width 15 mm
Stroke mm	100 to 2550
Lead equivalent mm	32
Max. load capacity *1	Horizontal kg: 10 Vertical kg: -
Max. speed mm/s	1600
Rated thrust *1 N	61
Repeatability mm	±0.04
Lost motion	0.1 mm or less
Operating ambient temperature, humidity	0 to 40°C (no freezing) 35 to 80% RH (no condensation)
Storage ambient temperature, humidity	-10 to 50°C (no freezing) 35 to 80% RH (no condensation)
Atmosphere	No corrosive gas, explosive gas, or dust

\*1 Rated thrust and max. load capacity are guideline values assuming that the motor mounting can output the rated torque.

### Allowable overhang length

		(mm)			
Horizontal	Lead equivalent	Weight kg	A	B	C
	32	5	550	160	140
		8	330	100	85
		10	260	80	65
Wall hanging	Lead equivalent	Weight kg	A	B	C
	32	5	140	160	520
		8	85	100	320
		10	65	75	250

- \* When using with suspension, select 1/3 of the max. load capacity and allowable overhang length. For the overhang length to the center of gravity of load, use values within the A, B, and C directions.
- \* The overhang length when the travel life is 5,000 km.
- \* Refer to page 230 for details.

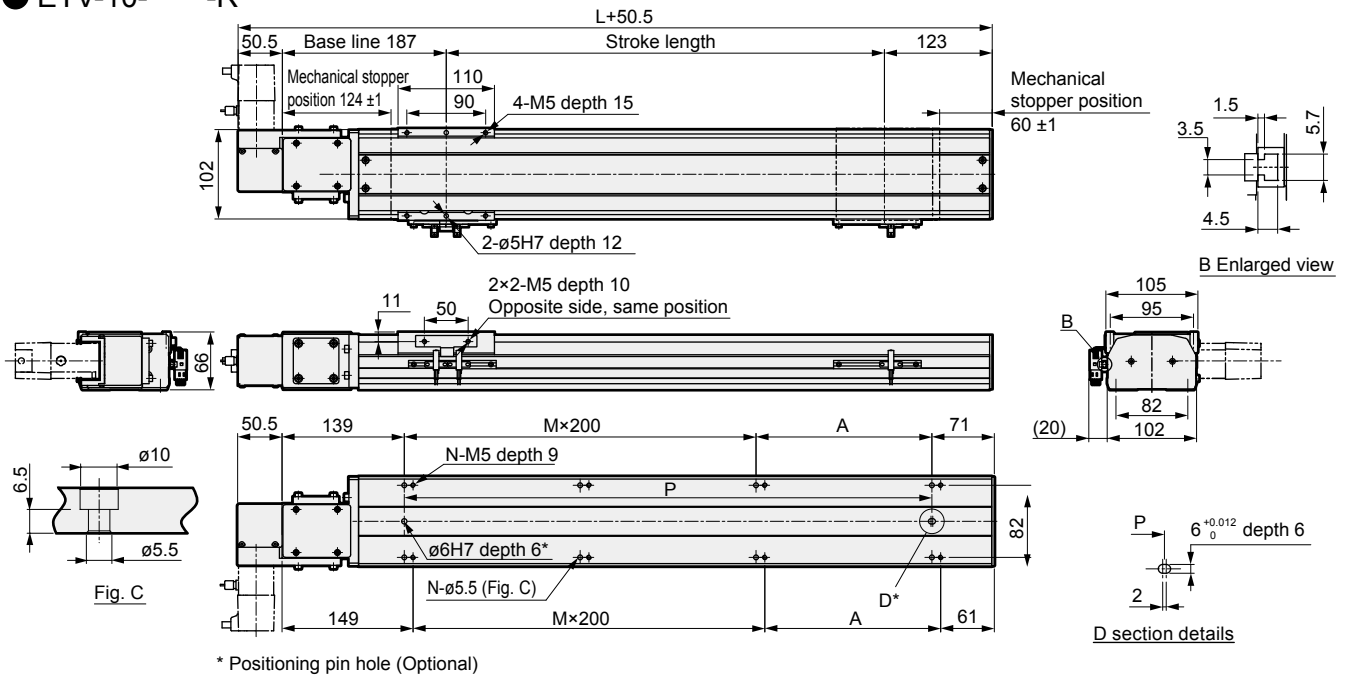
### Stroke and max. speed

		(mm/s)
Stroke	100 to 2550	
Lead equivalent	32	1600

\* The max. speed is the speed when the motor mounted by the customer can output a rotation speed of 3000 rpm.

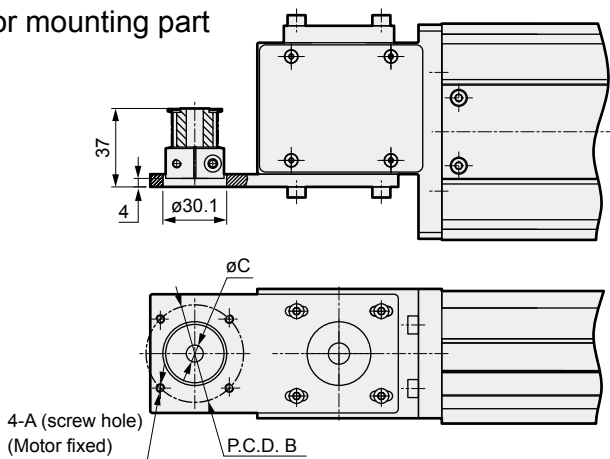
### Dimensions Right motor mounting

#### ● ETV-10-\*\*\*\*-R



Stroke (mm)	100	150	200	250	300	350	400	450	500	550	600	650	700	750	800	850	900	950	1000	1050	1100	1150	1200	1250	1300
L	410	460	510	560	610	660	710	760	810	860	910	960	1010	1060	1110	1160	1210	1260	1310	1360	1410	1460	1510	1560	1610
A	200	50	100	150	200	50	100	150	200	50	100	150	200	50	100	150	200	50	100	150	200	50	100	150	200
M	0	1	1	1	1	2	2	2	2	3	3	3	4	4	4	4	5	5	5	5	5	6	6	6	6
N	4	6	6	6	6	8	8	8	8	10	10	10	10	12	12	12	12	14	14	14	14	16	16	16	16
P	200	250	300	350	400	450	500	550	600	650	700	750	800	850	900	950	1000	1050	1100	1150	1200	1250	1300	1350	1400
Weight (kg)	6.8	7.2	7.7	8.1	8.5	8.9	9.3	9.8	10.2	10.6	11.0	11.5	11.9	12.3	12.7	13.2	13.6	14.0	14.4	14.8	15.3	15.7	16.1	16.5	16.9
Stroke (mm)	1350	1400	1450	1500	1550	1600	1650	1700	1750	1800	1850	1900	1950	2000	2050	2100	2150	2200	2250	2300	2350	2400	2450	2500	2550
L	1660	1710	1760	1810	1860	1910	1960	2010	2060	2110	2160	2210	2260	2310	2360	2410	2460	2510	2560	2610	2660	2710	2760	2810	2860
A	50	100	150	200	50	100	150	200	50	100	150	200	50	100	150	200	50	100	150	200	50	100	150	200	50
M	7	7	7	7	8	8	8	8	9	9	9	9	10	10	10	10	11	11	11	11	12	12	12	12	13
N	18	18	18	18	20	20	20	20	22	22	22	22	24	24	24	24	26	26	26	26	28	28	28	28	30
P	1450	1500	1550	1600	1650	1700	1750	1800	1850	1900	1950	2000	2050	2100	2150	2200	2250	2300	2350	2400	2450	2500	2550	2600	2650
Weight (kg)	17.4	17.8	18.2	18.6	19.0	19.5	19.9	20.3	20.7	21.1	21.6	22.0	22.4	22.8	23.2	23.7	24.1	24.5	24.9	25.3	25.8	26.2	26.6	27.0	27.4

#### Motor mounting part



Mounted motor specification	A	B	C	Motor mounting bolt
M 100 W	M4	ø46	ø8	4-M4 × L12
Y 100 W	M4	ø46	ø8	4-M4 × L12
P 100 W	M3	ø45	ø8	4-M3 × L12

#### List of attachments

##### [Motor mounting parts]

Mounted motor specification	Timing belt, pulley	Motor size	Motor mounting bolt	
			Size	Quantity
M	Included at shipment	100 W	M4	2
Y			M4	2
P			M3	4

##### [Origin sensor, limit sensor]

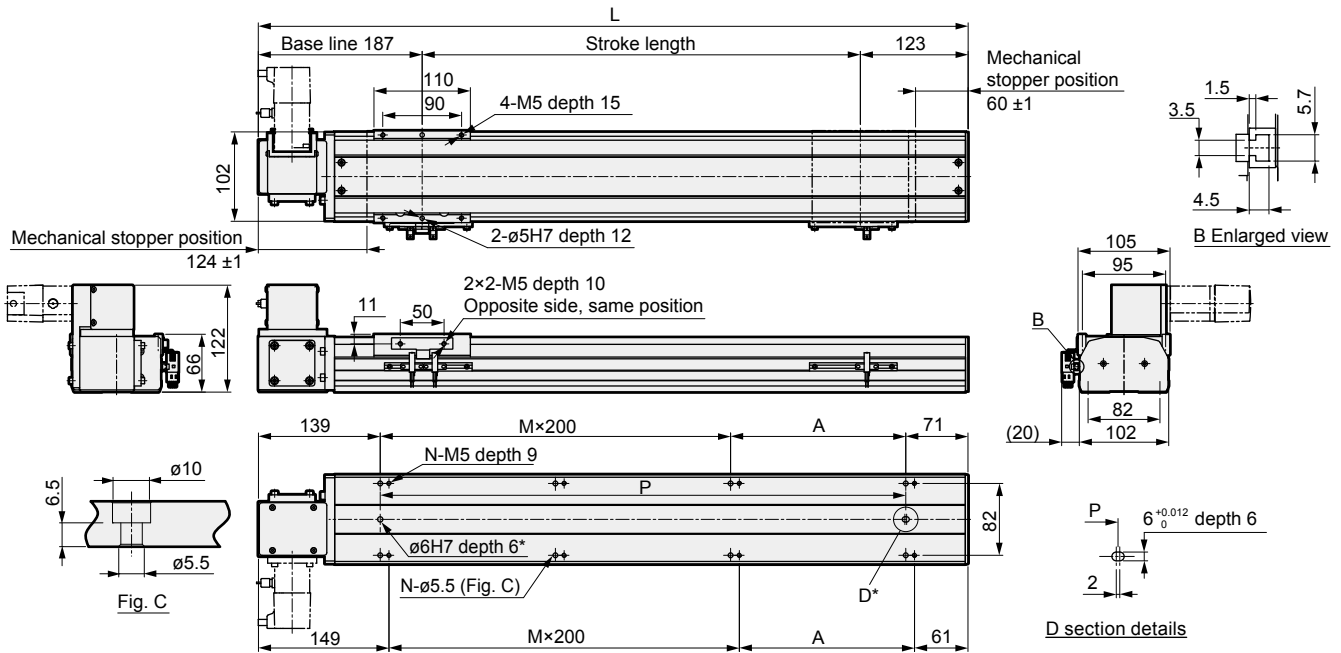
Manufacturer	Model	Quantity
OMRON Corporation	EE-SX672	3

\* Refer to page 236 for sensor specifications.

# ETV-10 Series

## Dimensions Top right motor mounting

### ● ETV-10-\*\*\*\*-S

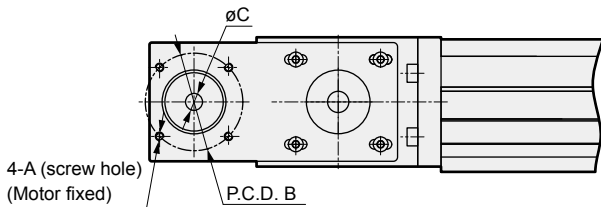
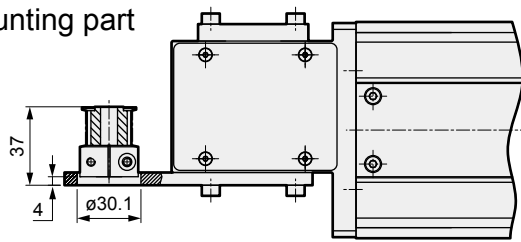


\* Positioning pin hole (Optional)

Stroke (mm)	100	150	200	250	300	350	400	450	500	550	600	650	700	750	800	850	900	950	1000	1050	1100	1150	1200	1250	1300
L	410	460	510	560	610	660	710	760	810	860	910	960	1010	1060	1110	1160	1210	1260	1310	1360	1410	1460	1510	1560	1610
A	200	50	100	150	200	50	100	150	200	50	100	150	200	50	100	150	200	50	100	150	200	50	100	150	200
M	0	1	1	1	1	2	2	2	2	3	3	3	3	4	4	4	4	5	5	5	5	6	6	6	6
N	4	6	6	6	6	8	8	8	8	10	10	10	10	12	12	12	12	14	14	14	14	16	16	16	16
P	200	250	300	350	400	450	500	550	600	650	700	750	800	850	900	950	1000	1050	1100	1150	1200	1250	1300	1350	1400
Weight (kg)	6.8	7.2	7.7	8.1	8.5	8.9	9.3	9.8	10.2	10.6	11.0	11.5	11.9	12.3	12.7	13.2	13.6	14.0	14.4	14.8	15.3	15.7	16.1	16.5	16.9

Stroke (mm)	1350	1400	1450	1500	1550	1600	1650	1700	1750	1800	1850	1900	1950	2000	2050	2100	2150	2200	2250	2300	2350	2400	2450	2500	2550
L	1660	1710	1760	1810	1860	1910	1960	2010	2060	2110	2160	2210	2260	2310	2360	2410	2460	2510	2560	2610	2660	2710	2760	2810	2860
A	50	100	150	200	50	100	150	200	50	100	150	200	50	100	150	200	50	100	150	200	50	100	150	200	50
M	7	7	7	7	8	8	8	8	9	9	9	9	10	10	10	10	11	11	11	11	12	12	12	12	13
N	18	18	18	18	20	20	20	20	22	22	22	22	24	24	24	24	26	26	26	26	28	28	28	28	30
P	1450	1500	1550	1600	1650	1700	1750	1800	1850	1900	1950	2000	2050	2100	2150	2200	2250	2300	2350	2400	2450	2500	2550	2600	2650
Weight (kg)	17.4	17.8	18.2	18.6	19.0	19.5	19.9	20.3	20.7	21.1	21.6	22.0	22.4	22.8	23.2	23.7	24.1	24.5	24.9	25.3	25.8	26.2	26.6	27.0	27.4

### Motor mounting part



Mounted motor specification		A	B	C	Motor mounting bolt
M	100 W	M4	ø46	ø8	4-M4 × L12
Y	100 W	M4	ø46	ø8	4-M4 × L12
P	100 W	M3	ø45	ø8	4-M3 × L12

### List of attachments

#### [Motor mounting parts]

Mounted motor specification	Timing belt, pulley	Motor size	Motor mounting bolt	
			Size	Quantity
M	Included at shipment	100 W	M4	2
Y			M4	2
P			M3	4

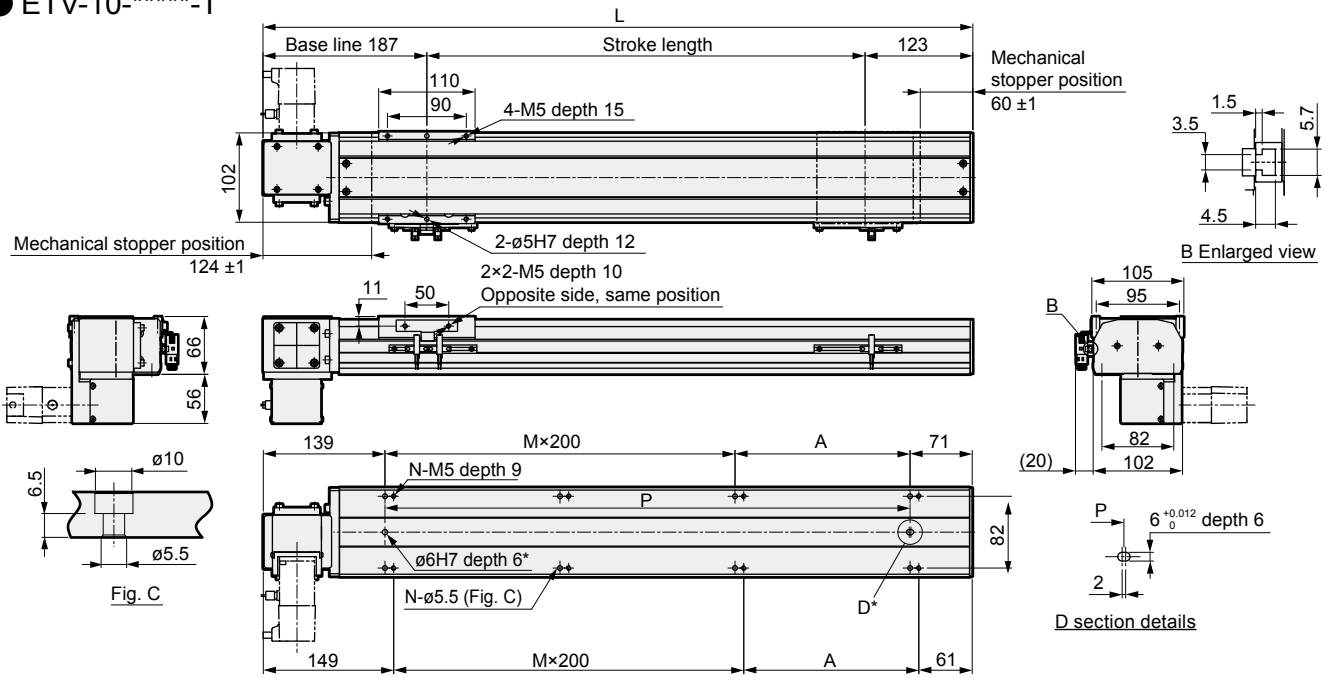
#### [Origin sensor, limit sensor]

Manufacturer	Model	Quantity
OMRON Corporation	EE-SX672	3

\* Refer to page 236 for sensor specifications.

### Dimensions Bottom right motor mounting

#### ● ETV-10-\*\*\*\*-T

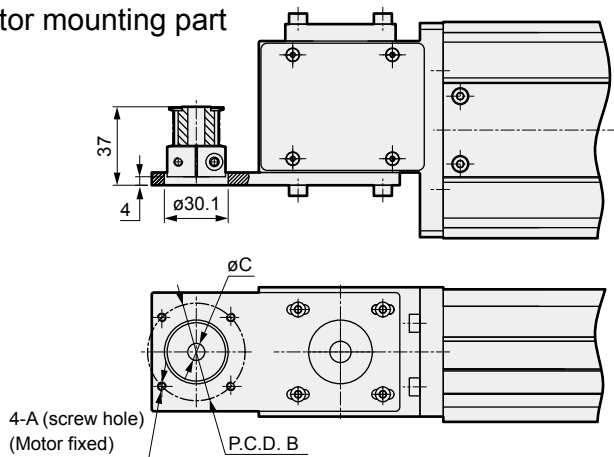


\* Positioning pin hole (Optional)

Stroke (mm)	100	150	200	250	300	350	400	450	500	550	600	650	700	750	800	850	900	950	1000	1050	1100	1150	1200	1250	1300
L	410	460	510	560	610	660	710	760	810	860	910	960	1010	1060	1110	1160	1210	1260	1310	1360	1410	1460	1510	1560	1610
A	200	50	100	150	200	50	100	150	200	50	100	150	200	50	100	150	200	50	100	150	200	50	100	150	200
M	0	1	1	1	1	2	2	2	2	3	3	3	3	4	4	4	4	5	5	5	5	6	6	6	6
N	4	6	6	6	6	8	8	8	8	10	10	10	10	12	12	12	12	14	14	14	14	16	16	16	16
P	200	250	300	350	400	450	500	550	600	650	700	750	800	850	900	950	1000	1050	1100	1150	1200	1250	1300	1350	1400
Weight (kg)	6.8	7.2	7.7	8.1	8.5	8.9	9.3	9.8	10.2	10.6	11.0	11.5	11.9	12.3	12.7	13.2	13.6	14.0	14.4	14.8	15.3	15.7	16.1	16.5	16.9

Stroke (mm)	1350	1400	1450	1500	1550	1600	1650	1700	1750	1800	1850	1900	1950	2000	2050	2100	2150	2200	2250	2300	2350	2400	2450	2500	2550
L	1660	1710	1760	1810	1860	1910	1960	2010	2060	2110	2160	2210	2260	2310	2360	2410	2460	2510	2560	2610	2660	2710	2760	2810	2860
A	50	100	150	200	50	100	150	200	50	100	150	200	50	100	150	200	50	100	150	200	50	100	150	200	50
M	7	7	7	7	8	8	8	8	9	9	9	9	10	10	10	10	11	11	11	11	11	12	12	12	13
N	18	18	18	18	20	20	20	20	22	22	22	22	24	24	24	24	26	26	26	26	26	28	28	28	30
P	1450	1500	1550	1600	1650	1700	1750	1800	1850	1900	1950	2000	2050	2100	2150	2200	2250	2300	2350	2400	2450	2500	2550	2600	2650
Weight (kg)	17.4	17.8	18.2	18.6	19.0	19.5	19.9	20.3	20.7	21.1	21.6	22.0	22.4	22.8	23.2	23.7	24.1	24.5	24.9	25.3	25.8	26.2	26.6	27.0	27.4

#### Motor mounting part



Mounted motor specification		A	B	C	Motor mounting bolt
M	100 W	M4	ø46	ø8	4-M4 × L12
Y	100 W	M4	ø46	ø8	4-M4 × L12
P	100 W	M3	ø45	ø8	4-M3 × L12

#### List of attachments

##### [Motor mounting parts]

Mounted motor specification	Timing belt, pulley	Motor size	Motor mounting bolt	
			Size	Quantity
M	Included at shipment	100 W	M4	2
Y			M4	2
P			M3	4

##### [Origin sensor, limit sensor]

Manufacturer	Model	Quantity
OMRON Corporation	EE-SX672	3

\* Refer to page 236 for sensor specifications.

EBS

EBR

ETS

ECS

ETV

ECV

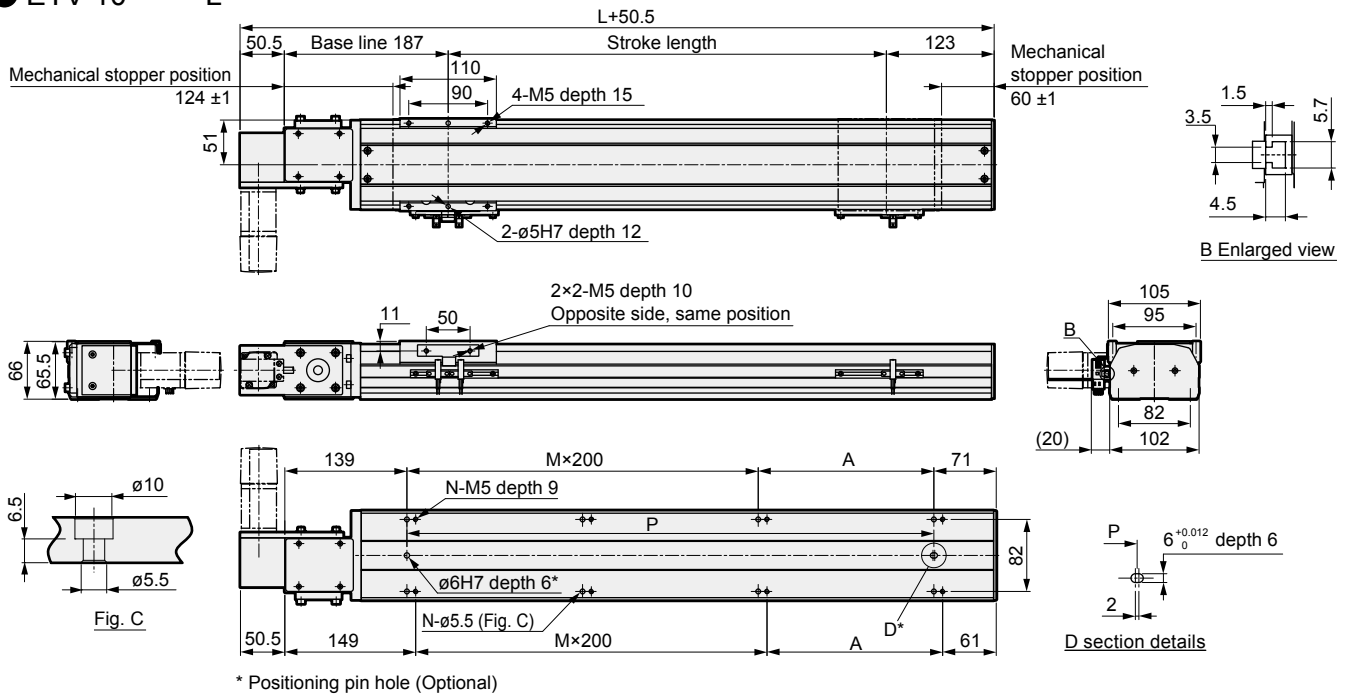
EKS

Safety precautions

# ETV-10 Series

## Dimensions Left motor mounting

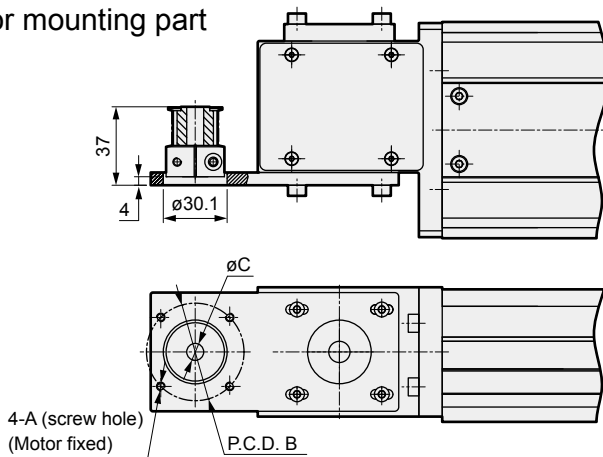
### ● ETV-10-\*\*\*\*-L



Stroke (mm)	100	150	200	250	300	350	400	450	500	550	600	650	700	750	800	850	900	950	1000	1050	1100	1150	1200	1250	1300
L	410	460	510	560	610	660	710	760	810	860	910	960	1010	1060	1110	1160	1210	1260	1310	1360	1410	1460	1510	1560	1610
A	200	50	100	150	200	50	100	150	200	50	100	150	200	50	100	150	200	50	100	150	200	50	100	150	200
M	0	1	1	1	1	2	2	2	2	3	3	3	3	4	4	4	4	5	5	5	5	6	6	6	6
N	4	6	6	6	6	8	8	8	8	10	10	10	10	12	12	12	12	14	14	14	14	16	16	16	16
P	200	250	300	350	400	450	500	550	600	650	700	750	800	850	900	950	1000	1050	1100	1150	1200	1250	1300	1350	1400
Weight (kg)	6.8	7.2	7.7	8.1	8.5	8.9	9.3	9.8	10.2	10.6	11.0	11.5	11.9	12.3	12.7	13.2	13.6	14.0	14.4	14.8	15.3	15.7	16.1	16.5	16.9

Stroke (mm)	1350	1400	1450	1500	1550	1600	1650	1700	1750	1800	1850	1900	1950	2000	2050	2100	2150	2200	2250	2300	2350	2400	2450	2500	2550
L	1660	1710	1760	1810	1860	1910	1960	2010	2060	2110	2160	2210	2260	2310	2360	2410	2460	2510	2560	2610	2660	2710	2760	2810	2860
A	50	100	150	200	50	100	150	200	50	100	150	200	50	100	150	200	50	100	150	200	50	100	150	200	50
M	7	7	7	7	8	8	8	8	9	9	9	9	10	10	10	10	11	11	11	11	12	12	12	12	13
N	18	18	18	18	20	20	20	20	22	22	22	22	24	24	24	24	26	26	26	26	28	28	28	28	30
P	1450	1500	1550	1600	1650	1700	1750	1800	1850	1900	1950	2000	2050	2100	2150	2200	2250	2300	2350	2400	2450	2500	2550	2600	2650
Weight (kg)	17.4	17.8	18.2	18.6	19.0	19.5	19.9	20.3	20.7	21.1	21.6	22.0	22.4	22.8	23.2	23.7	24.1	24.5	24.9	25.3	25.8	26.2	26.6	27.0	27.4

### Motor mounting part



Mounted motor specification	A	B	C	Motor mounting bolt
M 100 W	M4	ø46	ø8	4-M4 × L12
Y 100 W	M4	ø46	ø8	4-M4 × L12
P 100 W	M3	ø45	ø8	4-M3 × L12

### List of attachments

#### [Motor mounting parts]

Mounted motor specification	Timing belt, pulley	Motor size	Motor mounting bolt	
			Size	Quantity
M	Included at shipment	100 W	M4	2
Y			M4	2
P			M3	4

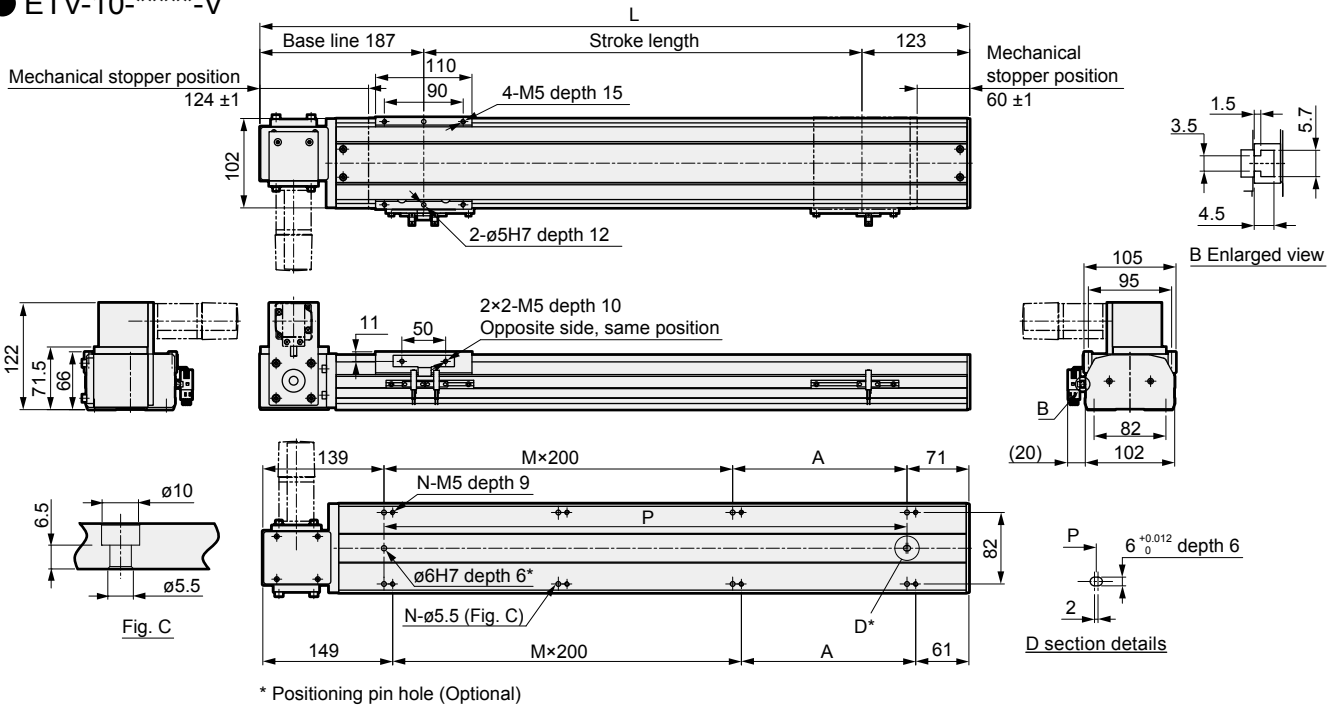
#### [Origin sensor, limit sensor]

Manufacturer	Model	Quantity
OMRON Corporation	EE-SX672	3

\* Refer to page 236 for sensor specifications.

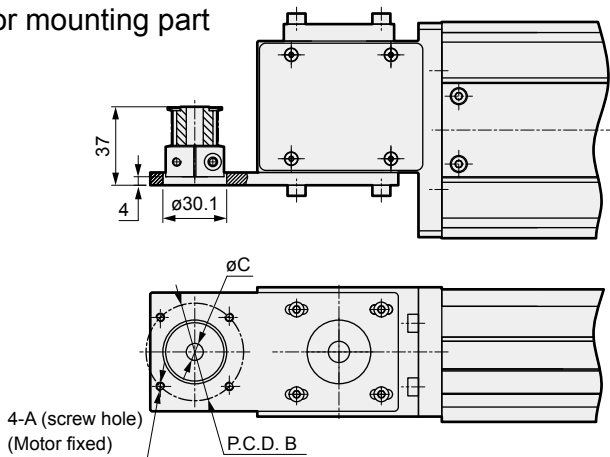
### Dimensions Top left motor mounting

#### ● ETV-10-\*\*\*\*-V



Stroke (mm)	100	150	200	250	300	350	400	450	500	550	600	650	700	750	800	850	900	950	1000	1050	1100	1150	1200	1250	1300
L	410	460	510	560	610	660	710	760	810	860	910	960	1010	1060	1110	1160	1210	1260	1310	1360	1410	1460	1510	1560	1610
A	200	50	100	150	200	50	100	150	200	50	100	150	200	50	100	150	200	50	100	150	200	50	100	150	200
M	0	1	1	1	1	2	2	2	2	3	3	3	3	4	4	4	4	5	5	5	5	6	6	6	6
N	4	6	6	6	6	8	8	8	8	10	10	10	10	12	12	12	12	14	14	14	14	16	16	16	16
P	200	250	300	350	400	450	500	550	600	650	700	750	800	850	900	950	1000	1050	1100	1150	1200	1250	1300	1350	1400
Weight (kg)	6.8	7.2	7.7	8.1	8.5	8.9	9.3	9.8	10.2	10.6	11.0	11.5	11.9	12.3	12.7	13.2	13.6	14.0	14.4	14.8	15.3	15.7	16.1	16.5	16.9
Stroke (mm)	1350	1400	1450	1500	1550	1600	1650	1700	1750	1800	1850	1900	1950	2000	2050	2100	2150	2200	2250	2300	2350	2400	2450	2500	2550
L	1660	1710	1760	1810	1860	1910	1960	2010	2060	2110	2160	2210	2260	2310	2360	2410	2460	2510	2560	2610	2660	2710	2760	2810	2860
A	50	100	150	200	50	100	150	200	50	100	150	200	50	100	150	200	50	100	150	200	50	100	150	200	50
M	7	7	7	7	8	8	8	8	9	9	9	9	10	10	10	10	11	11	11	11	12	12	12	12	13
N	18	18	18	18	20	20	20	20	22	22	22	22	24	24	24	24	26	26	26	26	28	28	28	28	30
P	1450	1500	1550	1600	1650	1700	1750	1800	1850	1900	1950	2000	2050	2100	2150	2200	2250	2300	2350	2400	2450	2500	2550	2600	2650
Weight (kg)	17.4	17.8	18.2	18.6	19.0	19.5	19.9	20.3	20.7	21.1	21.6	22.0	22.4	22.8	23.2	23.7	24.1	24.5	24.9	25.3	25.8	26.2	26.6	27.0	27.4

#### Motor mounting part



Mounted motor specification	A	B	C	Motor mounting bolt
M 100 W	M4	ø46	ø8	4-M4 × L12
Y 100 W	M4	ø46	ø8	4-M4 × L12
P 100 W	M3	ø45	ø8	4-M3 × L12

#### List of attachments

##### [Motor mounting parts]

Mounted motor specification	Timing belt, pulley	Motor size	Motor mounting bolt	
			Size	Quantity
M	Included at shipment	100 W	M4	2
Y			M4	2
P			M3	4

##### [Origin sensor, limit sensor]

Manufacturer	Model	Quantity
OMRON Corporation	EE-SX672	3

\* Refer to page 236 for sensor specifications.

EBS

EBR

ETS

ECS

ETV

ECV

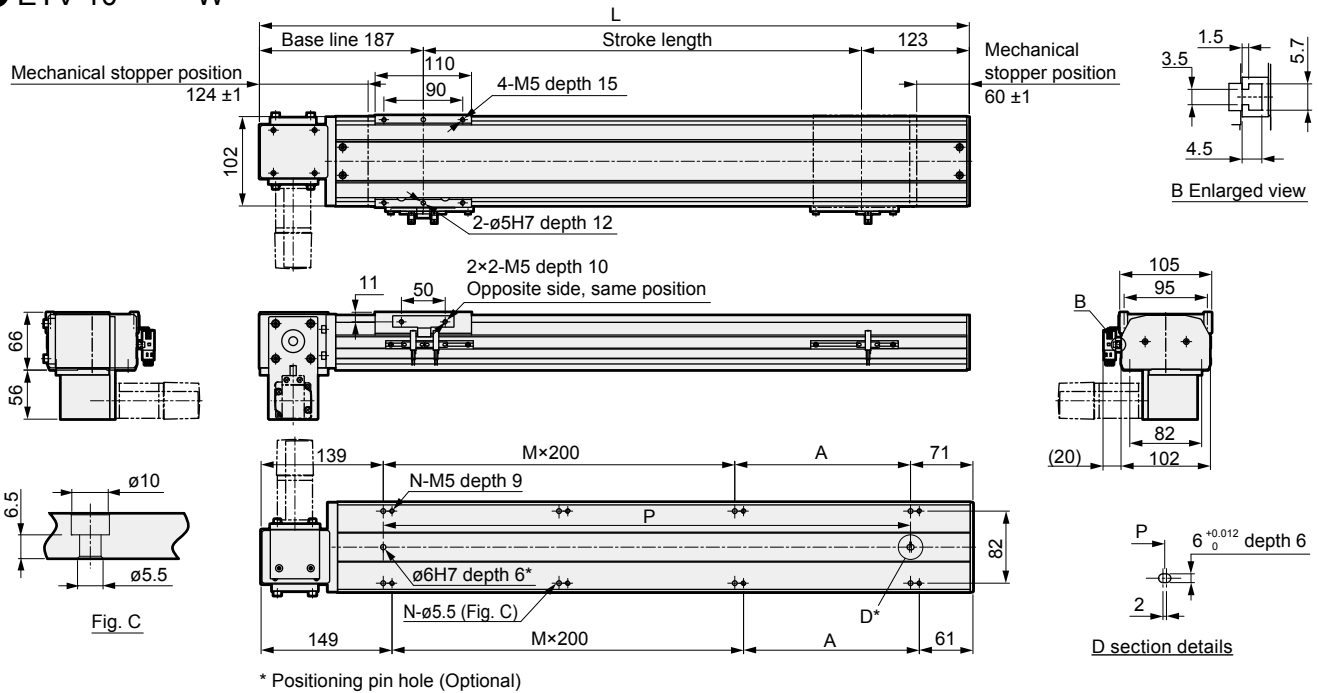
EKS

Safety precautions

# ETV-10 Series

## Dimensions Bottom left motor mounting

### ● ETV-10-\*\*\*\*\*-W

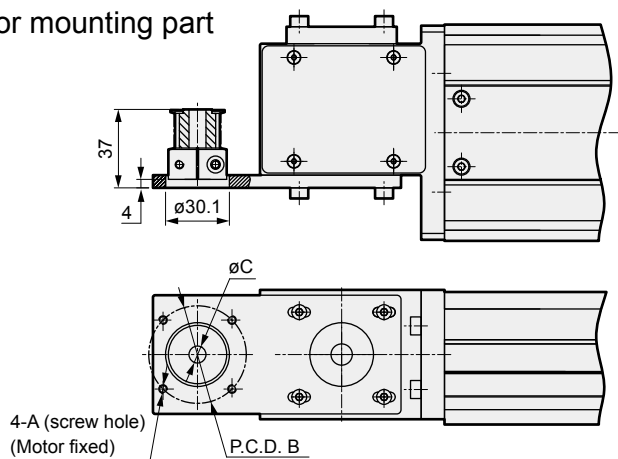


Stroke (mm)	100	150	200	250	300	350	400	450	500	550	600	650	700	750	800	850	900	950	1000	1050	1100	1150	1200	1250	1300
L	410	460	510	560	610	660	710	760	810	860	910	960	1010	1060	1110	1160	1210	1260	1310	1360	1410	1460	1510	1560	1610
A	200	50	100	150	200	50	100	150	200	50	100	150	200	50	100	150	200	50	100	150	200	50	100	150	200
M	0	1	1	1	1	2	2	2	2	3	3	3	3	4	4	4	4	5	5	5	5	6	6	6	6
N	4	6	6	6	6	8	8	8	8	10	10	10	10	12	12	12	12	14	14	14	14	16	16	16	16
P	200	250	300	350	400	450	500	550	600	650	700	750	800	850	900	950	1000	1050	1100	1150	1200	1250	1300	1350	1400
Weight (kg)	6.8	7.2	7.7	8.1	8.5	8.9	9.3	9.8	10.2	10.6	11.0	11.5	11.9	12.3	12.7	13.2	13.6	14.0	14.4	14.8	15.3	15.7	16.1	16.5	16.9

Stroke (mm)	1350	1400	1450	1500	1550	1600	1650	1700	1750	1800	1850	1900	1950	2000	2050	2100	2150	2200	2250	2300	2350	2400	2450	2500	2550
L	1660	1710	1760	1810	1860	1910	1960	2010	2060	2110	2160	2210	2260	2310	2360	2410	2460	2510	2560	2610	2660	2710	2760	2810	2860
A	50	100	150	200	50	100	150	200	50	100	150	200	50	100	150	200	50	100	150	200	50	100	150	200	50
M	7	7	7	7	8	8	8	8	9	9	9	9	10	10	10	10	11	11	11	11	12	12	12	12	13
N	18	18	18	18	20	20	20	20	22	22	22	22	24	24	24	24	26	26	26	26	28	28	28	28	30
P	1450	1500	1550	1600	1650	1700	1750	1800	1850	1900	1950	2000	2050	2100	2150	2200	2250	2300	2350	2400	2450	2500	2550	2600	2650
Weight (kg)	17.4	17.8	18.2	18.6	19.0	19.5	19.9	20.3	20.7	21.1	21.6	22.0	22.4	22.8	23.2	23.7	24.1	24.5	24.9	25.3	25.7	26.2	26.6	27.0	27.4

### Motor mounting part



Mounted motor specification	A	B	C	Motor mounting bolt
M 100 W	M4	φ46	φ8	4-M4 × L12
Y 100 W	M4	φ46	φ8	4-M4 × L12
P 100 W	M3	φ45	φ8	4-M3 × L12

### List of attachments

#### [Motor mounting parts]

Mounted motor specification	Timing belt, pulley	Motor size	Motor mounting bolt	
			Size	Quantity
M	Included at shipment	100 W	M4	2
Y			M4	2
P			M3	4

#### [Origin sensor, limit sensor]

Manufacturer	Model	Quantity
OMRON Corporation	EE-SX672	3

\* Refer to page 236 for sensor specifications.

MEMO

EBS

EBR

ETS

ECS

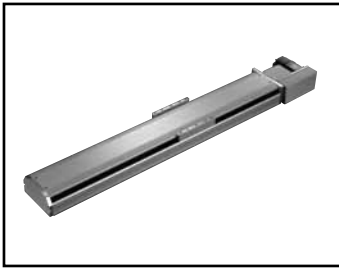
**ETV**

ECV

EKS

Safety  
precautions





Electric actuator Belt type

# ETV-14 Series

Selectable motor mounting

● Applicable motor capacity: 200 W

## How to order

**ETV** - **14** - **40** **010** - **R** **M** **2** **X** **N** **N** **N** **N**

**A** Body size

14	Body width 135 mm
----	-------------------

**B** Lead equivalent

40	40 mm
----	-------

**C** Stroke

010	100 mm
to	(In 50 mm increments)
305	3050 mm

**D** Motor mounting direction \*5

R	Right mounting
S	Top right mounting
T	Bottom right mounting
L	Left mounting
V	Top left mounting
W	Bottom left mounting

**E** Mounted motor specification

M	Select mounted
Y	motor specifications
P	from the table below.

**F** Motor capacity

2	200 W
---	-------

**G** Driving belt

X	Standard (rubber)
L	Low dust generation (urethane)

**H** Origin sensor (1 pc.) \*1\*2\*3

N	None
C	Outside Motor side
D	Outside Opposite motor side

**I** Limit sensor (2 pcs.) \*1\*2\*3

N	None
B	Outside

**K** Positioning pin hole

N	None
P	Yes

**J** Grease nipple \*3\*4\*5

N	None (body mounting direction: standard)
R	Clockwise
L	Counterclockwise

Manufacturer	200 W
Mitsubishi Electric Corporation	M
Delta Electronics Co., Ltd.	M
Sanyo Denki Co., Ltd.	M
YASKAWA Electric Corporation	Y
Keyence Corporation	Y
Panasonic Corporation	P
OMRON Corporation	P
Bosch Rexroth Corporation	P

- \*1 Origin sensor and limit sensor are a set. Select "None" for both of them if selecting it for either.
- \*2 The user can adjust the sensor position. (Included at shipment)
- \*3 Contact CKD if you want to use the origin sensor, limit sensor, and grease nipple in the same direction.
- \*4 "Body mounting direction: standard" means that both top side and bottom side mounting are possible.
- \*5 When motor mounting direction is "R", "S", or "T", grease nipple cannot be set to "R". When motor mounting direction is "L", "V", or "W", grease nipple cannot be set to "L".

\* For the motor model No., refer to page 187.

## Specifications

Applicable motor capacity	200 W servo motor	
Drive method	Belt width 22 mm	
Stroke mm	100 to 3050	
Lead equivalent mm	40	
Max. load capacity *1	Horizontal kg	25
	Vertical kg	-
Max. speed mm/s	2000	
Rated thrust *1 N	100	
Repeatability mm	±0.04	
Lost motion	0.1 mm or less	
Operating ambient temperature, humidity	0 to 40°C (no freezing)	
	35 to 80% RH (no condensation)	
Storage ambient temperature, humidity	-10 to 50°C (no freezing)	
	35 to 80% RH (no condensation)	
Atmosphere	No corrosive gas, explosive gas, or dust	

\*1 Rated thrust and max. load capacity are guideline values assuming that the motor mounting can output the rated torque.

## Allowable overhang length

		(mm)				
Horizontal	Lead equivalent	Weight kg	A	B	C	
	40	10	1800	700	550	
		20	880	330	260	
		25	700	260	200	
Wall hanging	Lead equivalent	Weight kg	A	B	C	
	40	10	540	690	1800	
		20	260	330	860	
		25	200	255	680	

\* When using with suspension, select 1/3 of the max. load capacity and allowable overhang length. For the overhang length to the center of gravity of load, use values within the A, B, and C directions.

\* The overhang length when the travel life is 5,000 km.

\* Refer to page 231 for details.

## Stroke and max. speed

		(mm/s)
Stroke	100 to 3050	
Lead equivalent	40	2000

\* The max. speed is the speed when the motor mounted by the customer can output a rotation speed of 3000 rpm.

EBS

EBR

ETS

ECS

ETV

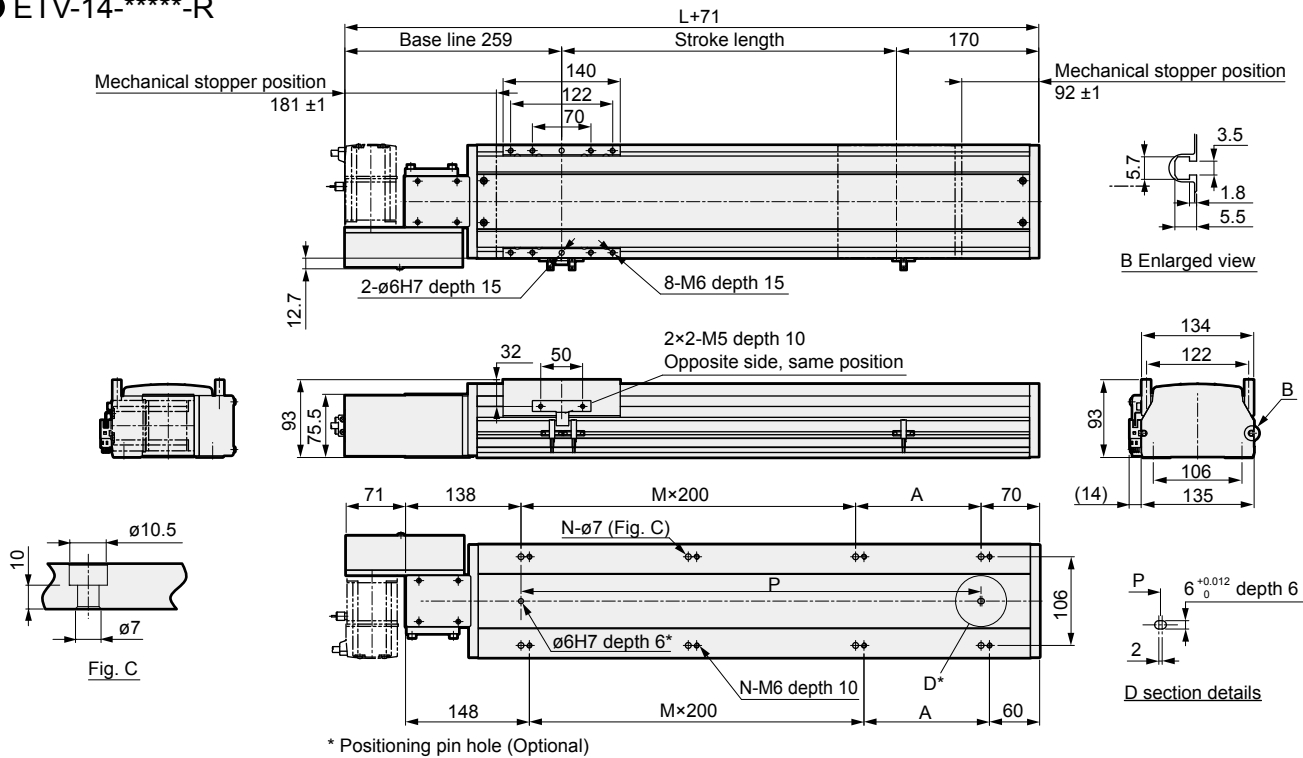
ECV

EKS

Safety precautions

### Dimensions Right motor mounting

#### ● ETV-14-\*\*\*\*-R

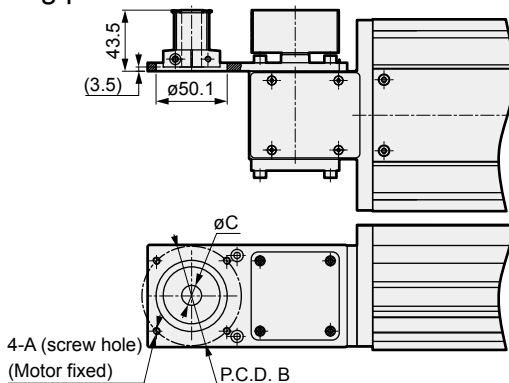


Stroke (mm)	100	150	200	250	300	350	400	450	500	550	600	650	700	750	800	850	900	950	1000	1050	1100	1150	1200	1250	1300	1350	1400	1450	1500	1550
L	458	508	558	608	658	708	758	808	858	908	958	1008	1058	1108	1158	1208	1258	1308	1358	1408	1458	1508	1558	1608	1658	1708	1758	1808	1858	1908
A	50	100	150	200	50	100	150	200	50	100	150	200	50	100	150	200	50	100	150	200	50	100	150	200	50	100	150	200	50	100
M	1	1	1	1	2	2	2	2	3	3	3	3	4	4	4	4	5	5	5	5	6	6	6	6	7	7	7	7	8	8
N	6	6	6	6	8	8	8	8	10	10	10	10	12	12	12	12	14	14	14	14	16	16	16	16	18	18	18	18	20	20
P	250	300	350	400	450	500	550	600	650	700	750	800	850	900	950	1000	1050	1100	1150	1200	1250	1300	1350	1400	1450	1500	1550	1600	1650	1700
Weight (kg)	8.6	9.0	9.5	10.0	10.5	11.0	11.4	12.0	12.4	13.0	13.4	13.9	14.4	14.9	15.4	15.9	16.4	16.9	17.3	17.9	18.5	19.1	19.7	20.3	20.9	21.5	22.1	22.7	23.3	23.9

Stroke (mm)	1600	1650	1700	1750	1800	1850	1900	1950	2000	2050	2100	2150	2200	2250	2300	2350	2400	2450	2500	2550	2600	2650	2700	2750	2800	2850	2900	2950	3000	3050	3100	3150	3200
L	1958	2008	2058	2108	2158	2208	2258	2308	2358	2408	2458	2508	2558	2608	2658	2708	2758	2808	2858	2908	2958	3008	3058	3108	3158	3208	3258	3308	3358	3408			
A	150	200	50	100	150	200	50	100	150	200	50	100	150	200	50	100	150	200	50	100	150	200	50	100	150	200	50	100	150	200			
M	8	8	9	9	9	9	10	10	10	10	11	11	11	11	12	12	12	12	13	13	13	13	14	14	14	14	15	15	15	15			
N	20	20	22	22	22	22	24	24	24	24	26	26	26	26	28	28	28	28	30	30	30	30	32	32	32	32	34	34	34	34			
P	1750	1800	1850	1900	1950	2000	2050	2100	2150	2200	2250	2300	2350	2400	2450	2500	2550	2600	2650	2700	2750	2800	2850	2900	2950	3000	3050	3100	3150	3200			
Weight (kg)	24.5	25.1	25.7	26.3	26.9	27.5	28.1	28.7	29.3	29.9	30.5	31.1	31.7	32.3	32.9	33.5	34.1	34.7	35.3	35.9	36.5	37.1	37.7	38.3	38.9	39.5	40.1	40.7	41.3	41.9			

#### Motor mounting part



Mounted motor specification		A	B	C	Motor mounting bolt
M	200 W	M5	∅70	∅14	4-M5 × L12
Y	200 W	M5	∅70	∅14	4-M5 × L12
P	200 W	M4	∅70	∅11	4-M4 × L12

#### List of attachments

##### [Motor mounting parts]

Mounted motor specification	Timing belt, pulley	Motor size	Motor mounting bolt	
			Size	Quantity
M	Included at shipment	200 W	M5	4
Y			M5	4
P			M4	4

##### [Origin sensor, limit sensor]

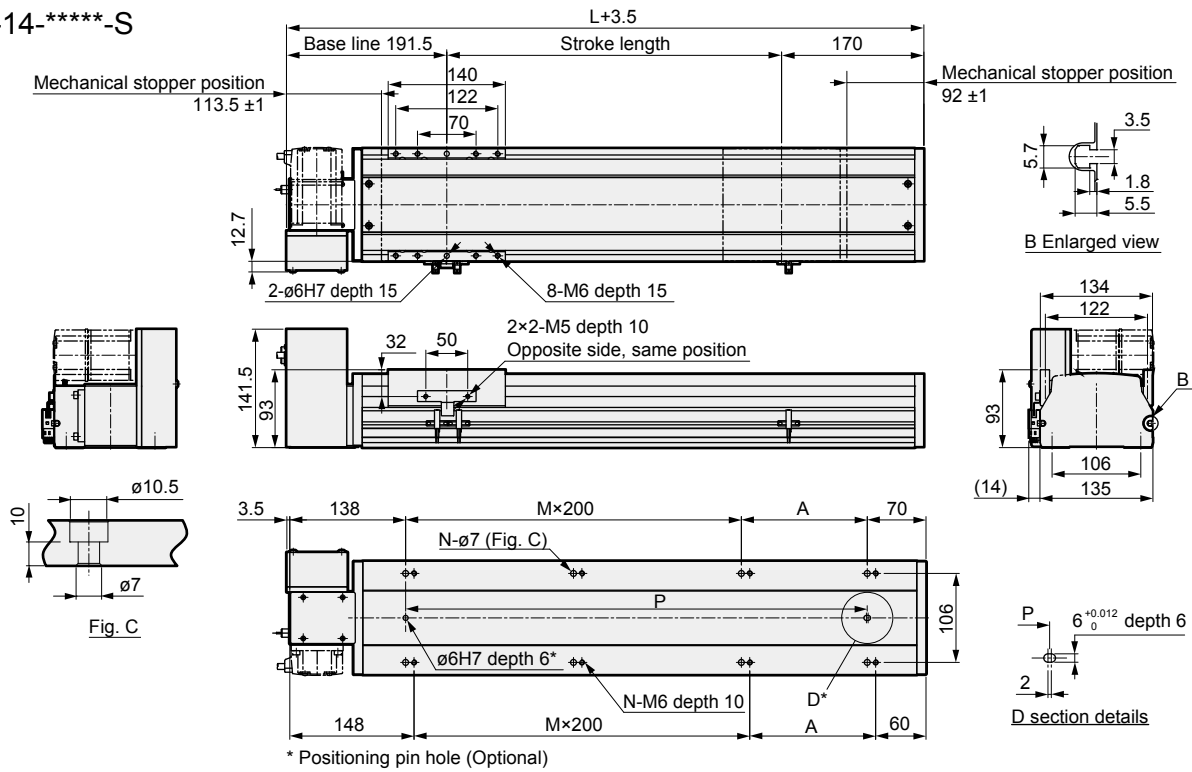
Manufacturer	Model	Quantity
OMRON Corporation	EE-SX672	3

\* Refer to page 236 for sensor specifications.

# ETV-14 Series

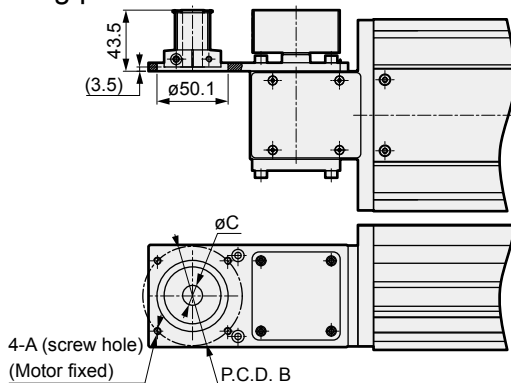
## Dimensions Top right motor mounting

### ● ETV-14-\*\*\*\*-S



Stroke (mm)	100	150	200	250	300	350	400	450	500	550	600	650	700	750	800	850	900	950	1000	1050	1100	1150	1200	1250	1300	1350	1400	1450	1500	1550
L	458	508	558	608	658	708	758	808	858	908	958	1008	1058	1108	1158	1208	1258	1308	1358	1408	1458	1508	1558	1608	1658	1708	1758	1808	1858	1908
A	50	100	150	200	50	100	150	200	50	100	150	200	50	100	150	200	50	100	150	200	50	100	150	200	50	100	150	200	50	100
M	1	1	1	1	2	2	2	2	3	3	3	3	4	4	4	4	5	5	5	5	6	6	6	6	7	7	7	7	8	8
N	6	6	6	6	8	8	8	8	10	10	10	10	12	12	12	12	14	14	14	14	16	16	16	16	18	18	18	18	20	20
P	250	300	350	400	450	500	550	600	650	700	750	800	850	900	950	1000	1050	1100	1150	1200	1250	1300	1350	1400	1450	1500	1550	1600	1650	1700
Weight (kg)	8.6	9.0	9.5	10.0	10.5	11.0	11.4	12.0	12.4	13.0	13.4	13.9	14.4	14.9	15.4	15.9	16.4	16.9	17.3	17.9	18.5	19.1	19.7	20.3	20.9	21.5	22.1	22.7	23.3	23.9
Stroke (mm)	1600	1650	1700	1750	1800	1850	1900	1950	2000	2050	2100	2150	2200	2250	2300	2350	2400	2450	2500	2550	2600	2650	2700	2750	2800	2850	2900	2950	3000	3050
L	1958	2008	2058	2108	2158	2208	2258	2308	2358	2408	2458	2508	2558	2608	2658	2708	2758	2808	2858	2908	2958	3008	3058	3108	3158	3208	3258	3308	3358	3408
A	150	200	50	100	150	200	50	100	150	200	50	100	150	200	50	100	150	200	50	100	150	200	50	100	150	200	50	100	150	200
M	8	8	9	9	9	9	10	10	10	10	11	11	11	11	12	12	12	12	13	13	13	13	14	14	14	14	15	15	15	15
N	20	20	22	22	22	24	24	24	24	24	26	26	26	26	28	28	28	28	30	30	30	30	32	32	32	32	34	34	34	34
P	1750	1800	1850	1900	1950	2000	2050	2100	2150	2200	2250	2300	2350	2400	2450	2500	2550	2600	2650	2700	2750	2800	2850	2900	2950	3000	3050	3100	3150	3200
Weight (kg)	24.5	25.1	25.7	26.3	26.9	27.5	28.1	28.7	29.3	29.9	30.5	31.1	31.7	32.3	32.9	33.5	34.1	34.7	35.3	35.9	36.5	37.1	37.7	38.3	38.9	39.5	40.1	40.7	41.3	41.9

### Motor mounting part



Mounted motor specification	A	B	C	Motor mounting bolt
M 200 W	M5	ø70	ø14	4-M5 × L12
Y 200 W	M5	ø70	ø14	4-M5 × L12
P 200 W	M4	ø70	ø11	4-M4 × L12

### List of attachments

#### [Motor mounting parts]

Mounted motor specification	Timing belt, pulley	Motor size	Motor mounting bolt	
			Size	Quantity
M	Included at shipment	200 W	M5	4
Y			M5	4
P			M4	4

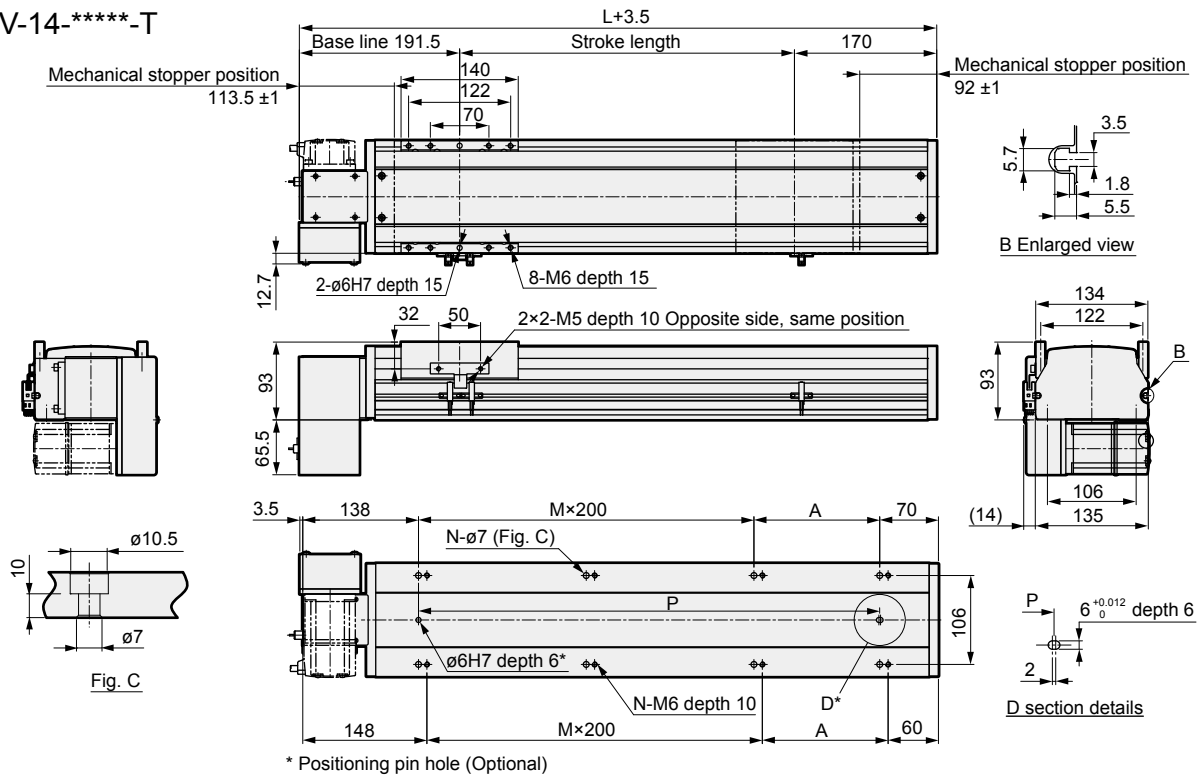
#### [Origin sensor, limit sensor]

Manufacturer	Model	Quantity
OMRON Corporation	EE-SX672	3

\* Refer to page 236 for sensor specifications.

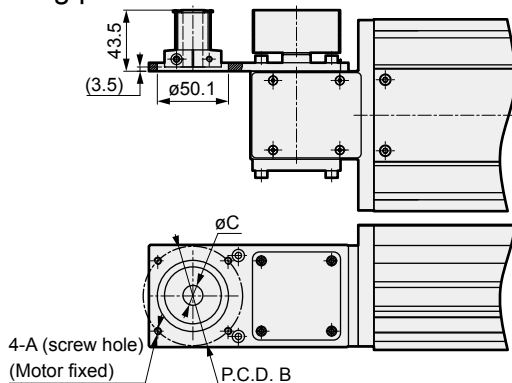
### Dimensions Bottom right motor mounting

#### ● ETV-14-\*\*\*\*-T



Stroke (mm)	100	150	200	250	300	350	400	450	500	550	600	650	700	750	800	850	900	950	1000	1050	1100	1150	1200	1250	1300	1350	1400	1450	1500	1550
L	458	508	558	608	658	708	758	808	858	908	958	1008	1058	1108	1158	1208	1258	1308	1358	1408	1458	1508	1558	1608	1658	1708	1758	1808	1858	1908
A	50	100	150	200	50	100	150	200	50	100	150	200	50	100	150	200	50	100	150	200	50	100	150	200	50	100	150	200	50	100
M	1	1	1	1	2	2	2	2	3	3	3	3	4	4	4	4	5	5	5	5	6	6	6	6	7	7	7	7	8	8
N	6	6	6	6	8	8	8	8	10	10	10	10	12	12	12	12	14	14	14	14	16	16	16	16	18	18	18	18	20	20
P	250	300	350	400	450	500	550	600	650	700	750	800	850	900	950	1000	1050	1100	1150	1200	1250	1300	1350	1400	1450	1500	1550	1600	1650	1700
Weight (kg)	8.6	9.0	9.5	10.0	10.5	11.0	11.4	12.0	12.4	13.0	13.4	13.9	14.4	14.9	15.4	15.9	16.4	16.9	17.3	17.9	18.5	19.1	19.7	20.3	20.9	21.5	22.1	22.7	23.3	23.9
Stroke (mm)	1600	1650	1700	1750	1800	1850	1900	1950	2000	2050	2100	2150	2200	2250	2300	2350	2400	2450	2500	2550	2600	2650	2700	2750	2800	2850	2900	2950	3000	3050
L	1958	2008	2058	2108	2158	2208	2258	2308	2358	2408	2458	2508	2558	2608	2658	2708	2758	2808	2858	2908	2958	3008	3058	3108	3158	3208	3258	3308	3358	3408
A	150	200	50	100	150	200	50	100	150	200	50	100	150	200	50	100	150	200	50	100	150	200	50	100	150	200	50	100	150	200
M	8	8	9	9	9	9	10	10	10	10	11	11	11	11	12	12	12	12	13	13	13	13	14	14	14	14	15	15	15	15
N	20	20	22	22	22	22	24	24	24	24	26	26	26	26	28	28	28	28	30	30	30	30	32	32	32	32	34	34	34	34
P	1750	1800	1850	1900	1950	2000	2050	2100	2150	2200	2250	2300	2350	2400	2450	2500	2550	2600	2650	2700	2750	2800	2850	2900	2950	3000	3050	3100	3150	3200
Weight (kg)	24.5	25.1	25.7	26.3	26.9	27.5	28.1	28.7	29.3	29.9	30.5	31.1	31.7	32.3	32.9	33.5	34.1	34.7	35.3	35.9	36.5	37.1	37.7	38.3	38.9	39.5	40.1	40.7	41.3	41.9

#### Motor mounting part



Mounted motor specification	A	B	C	Motor mounting bolt
M 200 W	M5	ø70	ø14	4-M5 × L12
Y 200 W	M5	ø70	ø14	4-M5 × L12
P 200 W	M4	ø70	ø11	4-M4 × L12

#### List of attachments

##### [Motor mounting parts]

Mounted motor specification	Timing belt, pulley	Motor size	Motor mounting bolt	
			Size	Quantity
M	Included at shipment	200 W	M5	4
Y			M5	4
P			M4	4

##### [Origin sensor, limit sensor]

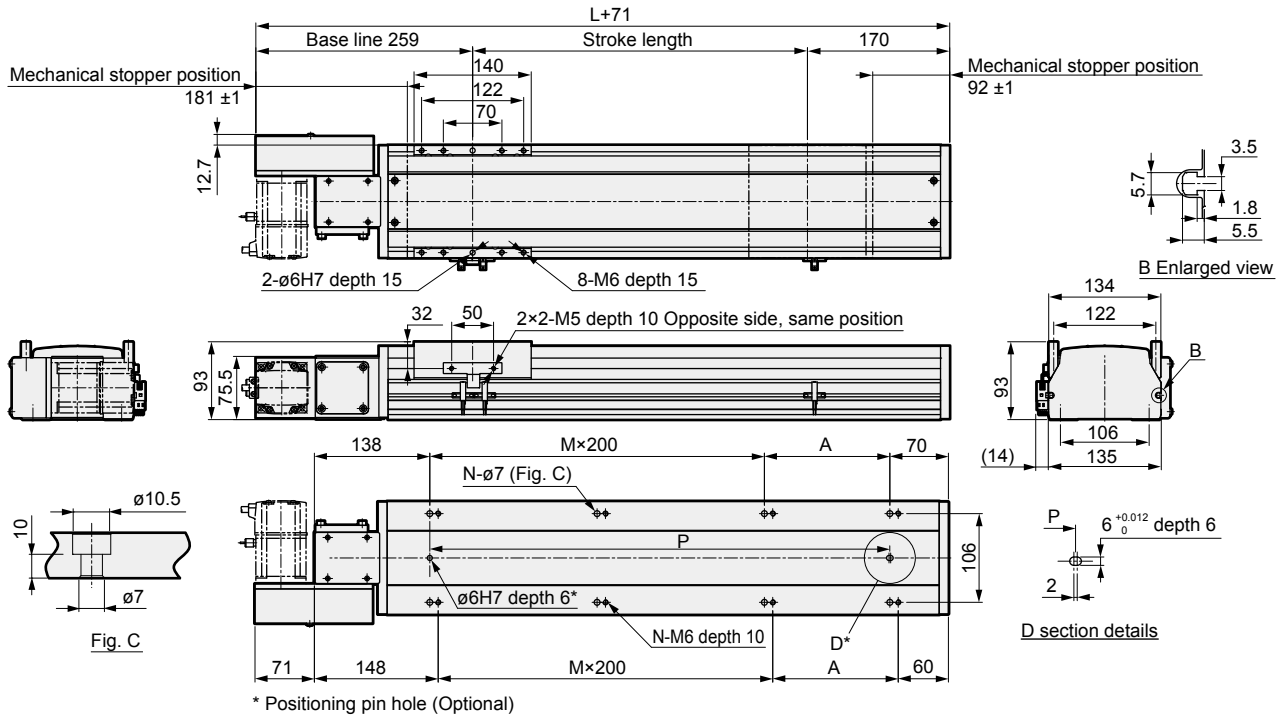
Manufacturer	Model	Quantity
OMRON Corporation	EE-SX672	3

\* Refer to page 236 for sensor specifications.

# ETV-14 Series

## Dimensions Left motor mounting

### ● ETV-14-\*\*\*\*-L

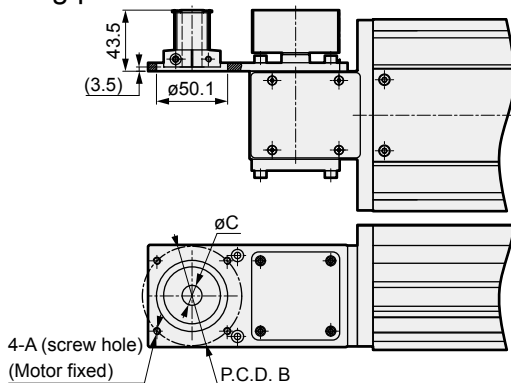


Stroke (mm)	100	150	200	250	300	350	400	450	500	550	600	650	700	750	800	850	900	950	1000	1050	1100	1150	1200	1250	1300	1350	1400	1450	1500	1550
L	458	508	558	608	658	708	758	808	858	908	958	1008	1058	1108	1158	1208	1258	1308	1358	1408	1458	1508	1558	1608	1658	1708	1758	1808	1858	1908
A	50	100	150	200	50	100	150	200	50	100	150	200	50	100	150	200	50	100	150	200	50	100	50	100	50	100	150	200	50	100
M	1	1	1	1	2	2	2	2	3	3	3	3	4	4	4	4	5	5	5	5	6	6	6	6	7	7	7	7	8	8
N	6	6	6	6	8	8	8	8	10	10	10	10	12	12	12	12	14	14	14	14	16	16	16	16	18	18	18	18	20	20
P	250	300	350	400	450	500	550	600	650	700	750	800	850	900	950	1000	1050	1100	1150	1200	1250	1300	1350	1400	1450	1500	1550	1600	1650	1700
Weight (kg)	8.6	9.0	9.5	10.0	10.5	11.0	11.4	12.0	12.4	13.0	13.4	13.9	14.4	14.9	15.4	15.9	16.4	16.9	17.3	17.9	18.5	19.1	19.7	20.3	20.9	21.5	22.1	22.7	23.3	23.9

Stroke (mm)	1600	1650	1700	1750	1800	1850	1900	1950	2000	2050	2100	2150	2200	2250	2300	2350	2400	2450	2500	2550	2600	2650	2700	2750	2800	2850	2900	2950	3000	3050
L	1958	2008	2058	2108	2158	2208	2258	2308	2358	2408	2458	2508	2558	2608	2658	2708	2758	2808	2858	2908	2958	3008	3058	3108	3158	3208	3258	3308	3358	3408
A	150	200	50	100	150	200	50	100	150	200	50	100	150	200	50	100	150	200	50	100	150	200	50	100	150	200	50	100	150	200
M	8	8	9	9	9	9	10	10	10	10	11	11	11	11	12	12	12	12	13	13	13	13	14	14	14	14	15	15	15	15
N	20	20	22	22	22	22	24	24	24	24	26	26	26	26	28	28	28	28	30	30	30	30	32	32	32	32	34	34	34	34
P	1750	1800	1850	1900	1950	2000	2050	2100	2150	2200	2250	2300	2350	2400	2450	2500	2550	2600	2650	2700	2750	2800	2850	2900	2950	3000	3050	3100	3150	3200
Weight (kg)	24.5	25.1	25.7	26.3	26.9	27.5	28.1	28.7	29.3	29.9	30.5	31.1	31.7	32.3	32.9	33.5	34.1	34.7	35.3	35.9	36.5	37.1	37.7	38.3	38.9	39.5	40.1	40.7	41.3	41.9

### Motor mounting part



Mounted motor specification		A	B	C	Motor mounting bolt
M	200 W	M5	ø70	ø14	4-M5 × L12
Y	200 W	M5	ø70	ø14	4-M5 × L12
P	200 W	M4	ø70	ø11	4-M4 × L12

### List of attachments

#### [Motor mounting parts]

Mounted motor specification	Timing belt, pulley	Motor size	Motor mounting bolt	
			Size	Quantity
M	Included at shipment	200 W	M5	4
Y			M5	4
P			M4	4

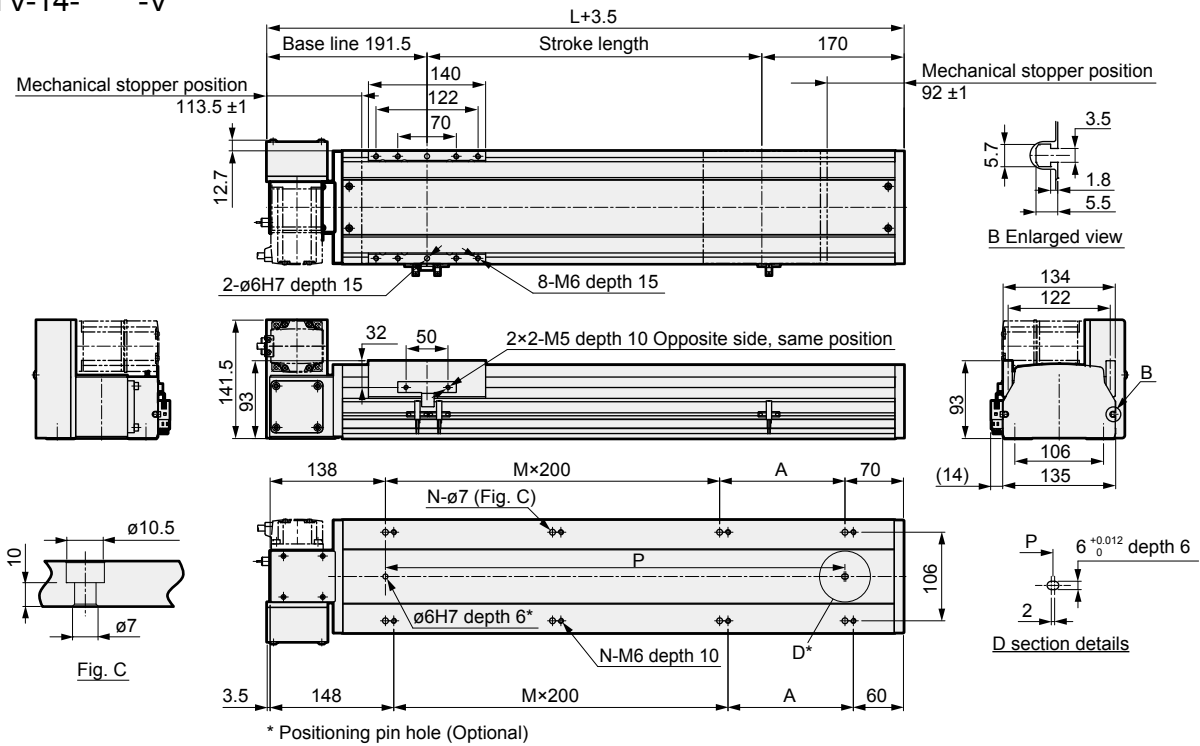
#### [Origin sensor, limit sensor]

Manufacturer	Model	Quantity
OMRON Corporation	EE-SX672	3

\* Refer to page 236 for sensor specifications.

### Dimensions Top left motor mounting

#### ● ETV-14-\*\*\*\*-V

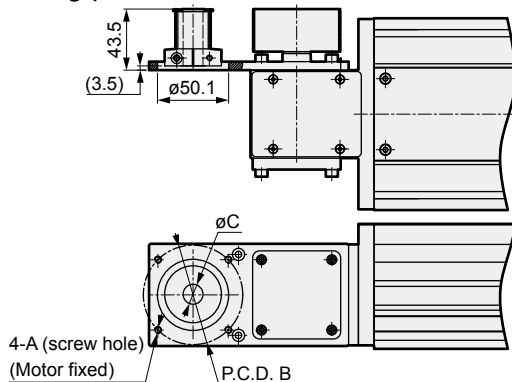


Stroke (mm)	100	150	200	250	300	350	400	450	500	550	600	650	700	750	800	850	900	950	1000	1050	1100	1150	1200	1250	1300	1350	1400	1450	1500	1550
L	458	508	558	608	658	708	758	808	858	908	958	1008	1058	1108	1158	1208	1258	1308	1358	1408	1458	1508	1558	1608	1658	1708	1758	1808	1858	1908
A	50	100	150	200	50	100	150	200	50	100	150	200	50	100	150	200	50	100	150	200	50	100	150	200	50	100	150	200	50	100
M	1	1	1	1	2	2	2	2	3	3	3	3	4	4	4	4	5	5	5	5	6	6	6	6	7	7	7	7	8	8
N	6	6	6	6	8	8	8	8	10	10	10	10	12	12	12	12	14	14	14	14	16	16	16	16	18	18	18	18	20	20
P	250	300	350	400	450	500	550	600	650	700	750	800	850	900	950	1000	1050	1100	1150	1200	1250	1300	1350	1400	1450	1500	1550	1600	1650	1700
Weight (kg)	8.6	9.0	9.5	10.0	10.5	11.0	11.4	12.0	12.4	13.0	13.4	13.9	14.4	14.9	15.4	15.9	16.4	16.9	17.3	17.9	18.5	19.1	19.7	20.3	20.9	21.5	22.1	22.7	23.3	23.9

Stroke (mm)	1600	1650	1700	1750	1800	1850	1900	1950	2000	2050	2100	2150	2200	2250	2300	2350	2400	2450	2500	2550	2600	2650	2700	2750	2800	2850	2900	2950	3000	3050
L	1958	2008	2058	2108	2158	2208	2258	2308	2358	2408	2458	2508	2558	2608	2658	2708	2758	2808	2858	2908	2958	3008	3058	3108	3158	3208	3258	3308	3358	3408
A	150	200	50	100	150	200	50	100	150	200	50	100	150	200	50	100	150	200	50	100	150	200	50	100	150	200	50	100	150	200
M	8	8	9	9	9	9	10	10	10	10	11	11	11	11	12	12	12	12	13	13	13	13	14	14	14	14	15	15	15	15
N	20	20	22	22	22	22	24	24	24	24	26	26	26	26	28	28	28	28	30	30	30	30	32	32	32	32	34	34	34	34
P	1750	1800	1850	1900	1950	2000	2050	2100	2150	2200	2250	2300	2350	2400	2450	2500	2550	2600	2650	2700	2750	2800	2850	2900	2950	3000	3050	3100	3150	3200
Weight (kg)	24.5	25.1	25.7	26.3	26.9	27.5	28.1	28.7	29.3	29.9	30.5	31.1	31.7	32.3	32.9	33.5	34.1	34.7	35.3	35.9	36.5	37.1	37.7	38.3	38.9	39.5	40.1	40.7	41.3	41.9

#### Motor mounting part



Mounted motor specification		A	B	C	Motor mounting bolt
M	200 W	M5	ø70	ø14	4-M5 × L12
Y	200 W	M5	ø70	ø14	4-M5 × L12
P	200 W	M4	ø70	ø11	4-M4 × L12

#### List of attachments

##### [Motor mounting parts]

Mounted motor specification	Timing belt, pulley	Motor size	Motor mounting bolt	
			Size	Quantity
M	Included at shipment	200 W	M5	4
Y			M5	4
P			M4	4

##### [Origin sensor, limit sensor]

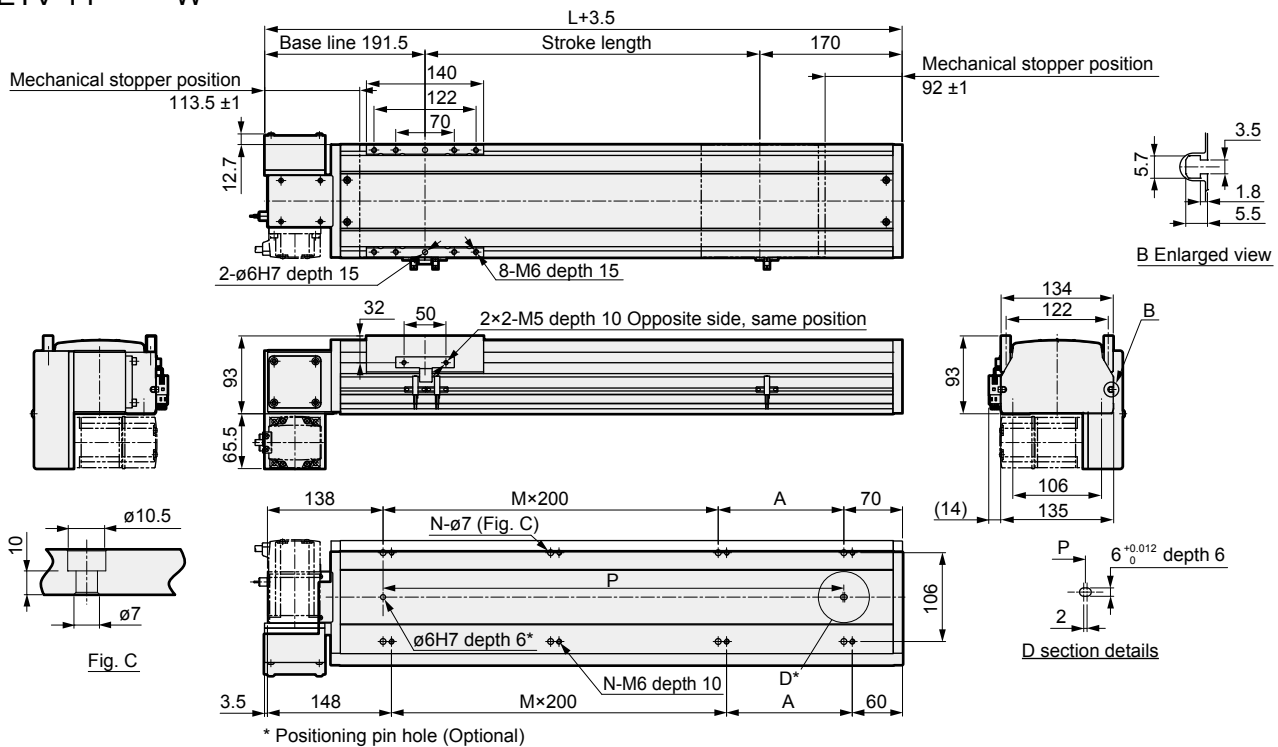
Manufacturer	Model	Quantity
OMRON Corporation	EE-SX672	3

\* Refer to page 236 for sensor specifications.

# ETV-14 Series

## Dimensions Bottom left motor mounting

### ● ETV-14-\*\*\*\*-W



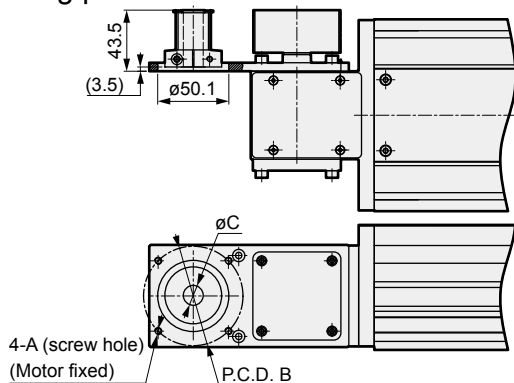
\* Positioning pin hole (Optional)

Stroke (mm)	100	150	200	250	300	350	400	450	500	550	600	650	700	750	800	850	900	950	1000	1050	1100	1150	1200	1250	1300	1350	1400	1450	1500	1550
L	458	508	558	608	658	708	758	808	858	908	958	1008	1058	1108	1158	1208	1258	1308	1358	1408	1458	1508	1558	1608	1658	1708	1758	1808	1858	1908
A	50	100	150	200	50	100	150	200	50	100	150	200	50	100	150	200	50	100	150	200	50	100	150	200	50	100	150	200	50	100
M	1	1	1	1	2	2	2	2	3	3	3	3	4	4	4	4	5	5	5	5	6	6	6	6	7	7	7	7	8	8
N	6	6	6	6	8	8	8	8	10	10	10	10	12	12	12	12	14	14	14	14	16	16	16	16	18	18	18	18	20	20
P	250	300	350	400	450	500	550	600	650	700	750	800	850	900	950	1000	1050	1100	1150	1200	1250	1300	1350	1400	1450	1500	1550	1600	1650	1700
Weight (kg)	8.6	9.0	9.5	10.0	10.5	11.0	11.4	12.0	12.4	13.0	13.4	13.9	14.4	14.9	15.4	15.9	16.4	16.9	17.3	17.9	18.5	19.1	19.7	20.3	20.9	21.5	22.1	22.7	23.3	23.9

Stroke (mm)	1600	1650	1700	1750	1800	1850	1900	1950	2000	2050	2100	2150	2200	2250	2300	2350	2400	2450	2500	2550	2600	2650	2700	2750	2800	2850	2900	2950	3000	3050
L	1958	2008	2058	2108	2158	2208	2258	2308	2358	2408	2458	2508	2558	2608	2658	2708	2758	2808	2858	2908	2958	3008	3058	3108	3158	3208	3258	3308	3358	3408
A	150	200	50	100	150	200	50	100	150	200	50	100	150	200	50	100	150	200	50	100	150	200	50	100	150	200	50	100	150	200
M	8	8	9	9	9	9	10	10	10	10	11	11	11	11	12	12	12	12	13	13	13	13	14	14	14	14	15	15	15	15
N	20	20	22	22	22	24	24	24	24	24	26	26	26	26	28	28	28	28	30	30	30	30	32	32	32	32	34	34	34	34
P	1750	1800	1850	1900	1950	2000	2050	2100	2150	2200	2250	2300	2350	2400	2450	2500	2550	2600	2650	2700	2750	2800	2850	2900	2950	3000	3050	3100	3150	3200
Weight (kg)	24.5	25.1	25.7	26.3	26.9	27.5	28.1	28.7	29.3	29.9	30.5	31.1	31.7	32.3	32.9	33.5	34.1	34.7	35.3	35.9	36.5	37.1	37.7	38.3	38.9	39.5	40.1	40.7	41.3	41.9

### Motor mounting part



Mounted motor specification	A	B	C	Motor mounting bolt
M 200 W	M5	ø70	ø14	4-M5 × L12
Y 200 W	M5	ø70	ø14	4-M5 × L12
P 200 W	M4	ø70	ø11	4-M4 × L12

### List of attachments

#### [Motor mounting parts]

Mounted motor specification	Timing belt, pulley	Motor size	Motor mounting bolt	
			Size	Quantity
M	Included at shipment	200 W	M5	4
Y			M5	4
P			M4	4

#### [Origin sensor, limit sensor]

Manufacturer	Model	Quantity
OMRON Corporation	EE-SX672	3

\* Refer to page 236 for sensor specifications.

MEMO

EBS

EBR

ETS

ECS

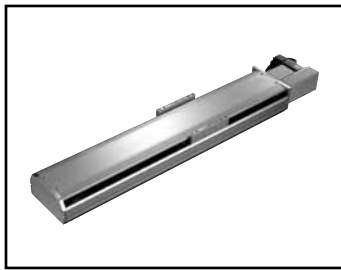
**ETV**

ECV

EKS

Safety  
precautions





# Electric actuator Belt type

## ETV-17 Series

Selectable motor mounting  
 ● Applicable motor capacity: 400 W

### How to order

**ETV - 17 - 40 010 - R M 4 X N N N N**

**A** Body size  
 17 Body width 170 mm

**B** Lead equivalent  
 40 40 mm

**C** Stroke  
 010 100 mm  
 to (In 50 mm increments)  
 305 3050 mm

**D** Motor mounting direction \*5

R	Right mounting
S	Top right mounting
T	Bottom right mounting
L	Left mounting
V	Top left mounting
W	Bottom left mounting

**E** Mounted motor specification

M	Select mounted motor specifications from the table below.
Y	
P	

**F** Motor capacity  
 4 400 W

**G** Driving belt

X	Standard (rubber)
L	Low dust generation (urethane)

**H** Origin sensor (1 pc.) \*1\*2\*3

N	None
C	Outside Motor side
D	Outside Opposite motor side

**I** Limit sensor (2 pcs.) \*1\*2\*3

N	None
B	Outside

**J** Grease nipple \*3\*4\*5

N	None (body mounting direction: standard)
R	Clockwise
L	Counterclockwise

**K** Positioning pin hole

N	None
P	Yes

Manufacturer	400 W
Mitsubishi Electric Corporation	M
Delta Electronics Co., Ltd.	M
Sanyo Denki Co., Ltd.	M
YASKAWA Electric Corporation	Y
Keyence Corporation	Y
Panasonic Corporation	P
OMRON Corporation	P
Bosch Rexroth Corporation	P

\*1 Origin sensor and limit sensor are a set. Select "None" for both of them if selecting it for either.  
 \*2 The user can adjust the sensor position. (Included at shipment)  
 \*3 Contact CKD if you want to use the origin sensor, limit sensor, and grease nipple in the same direction.  
 \*4 "Body mounting direction: standard" means that both top side and bottom side mounting are possible.  
 \*5 When motor mounting direction is "R", "S", or "T", grease nipple cannot be set to "R". When motor mounting direction is "L", "V", or "W", grease nipple cannot be set to "L".

\* For the motor model No., refer to page 187.

### Specifications

Applicable motor capacity	400 W servo motor
Drive method	Belt width 30 mm
Stroke mm	100 to 3500
Lead equivalent mm	40
Max. load capacity *1	Horizontal kg 45 Vertical kg -
Max. speed mm/s	2000
Rated thrust *1 N	204
Repeatability mm	±0.04
Lost motion	0.1 mm or less
Operating ambient temperature, humidity	0 to 40°C (no freezing) 35 to 80% RH (no condensation)
Storage ambient temperature, humidity	-10 to 50°C (no freezing) 35 to 80% RH (no condensation)
Atmosphere	No corrosive gas, explosive gas, or dust

\*1 Rated thrust and max. load capacity are guideline values assuming that the motor mounting can output the rated torque.

### Allowable overhang length

		(mm)			
Horizontal	Lead equivalent	Weight kg	A	B	C
	40	10	3000	1250	1150
		20	1600	600	550
		30	1050	400	360
		45	650	250	230
Wall hanging	Lead equivalent	Weight kg	A	B	C
	40	10	1150	1250	2700
		20	550	600	1550
		30	350	390	1000
		45	220	230	630

\* When using with suspension, select 1/3 of the max. load capacity and allowable overhang length. For the overhang length to the center of gravity of load, use values within the A, B, and C directions.  
 \* The overhang length when the travel life is 5,000 km.  
 \* Refer to page 232 for details.

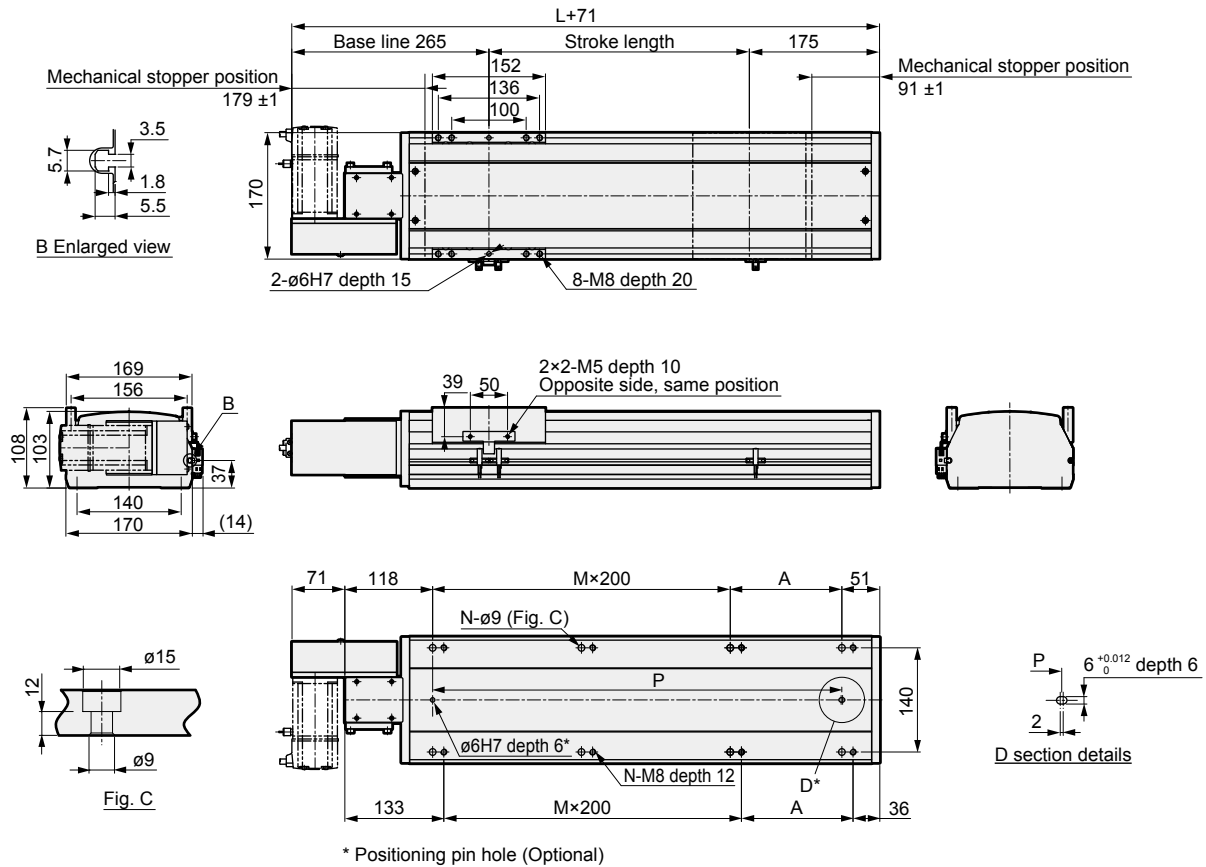
### Stroke and max. speed

		(mm/s)
Stroke	100 to 3500	
Lead equivalent	40	2000

\* The max. speed is the speed when the motor mounted by the customer can output a rotation speed of 3000 rpm.

### Dimensions Right motor mounting

#### ● ETV-17-\*\*\*\*-R



Stroke (mm)	100	150	200	250	300	350	400	450	500	550	600	650	700	750	800	850	900	950	1000	1050	1100	1150	1200
L	469	519	569	619	669	719	769	819	869	919	969	1019	1069	1119	1169	1219	1269	1319	1369	1419	1469	1519	1569
A	100	150	200	50	100	150	200	50	100	150	200	50	100	150	200	50	100	150	200	50	100	150	200
M	1	1	1	2	2	2	2	3	3	3	3	4	4	4	4	5	5	5	5	6	6	6	6
N	6	6	6	8	8	8	8	10	10	10	10	12	12	12	12	14	14	14	14	16	16	16	16
P	300	350	400	450	500	550	600	650	700	750	800	850	900	950	1000	1050	1100	1150	1200	1250	1300	1350	1400
Weight (kg)	12.0	13.8	14.6	15.4	16.1	16.9	17.7	18.5	19.2	20.0	20.8	21.6	22.3	23.1	23.9	24.7	25.4	26.2	27.0	27.8	28.6	29.4	30.2
Stroke (mm)	1250	1300	1350	1400	1450	1500	1550	1600	1650	1700	1750	1800	1850	1900	1950	2000	2050	2100	2150	2200	2250	2300	2350
L	1619	1669	1719	1769	1819	1869	1919	1969	2019	2069	2119	2169	2219	2269	2319	2369	2419	2469	2519	2569	2619	2669	2719
A	50	100	150	200	50	100	150	200	50	100	150	200	50	100	150	200	50	100	150	200	50	100	150
M	7	7	7	7	8	8	8	8	9	9	9	9	10	10	10	10	11	11	11	11	12	12	12
N	18	18	18	18	20	20	20	20	22	22	22	22	24	24	24	24	26	26	26	26	28	28	28
P	1450	1500	1550	1600	1650	1700	1750	1800	1850	1900	1950	2000	2050	2100	2150	2200	2250	2300	2350	2400	2450	2500	2550
Weight (kg)	31.0	31.8	32.6	33.4	34.2	35.0	35.8	36.6	37.4	38.2	39.0	39.8	40.6	41.4	42.2	43.0	43.8	44.6	45.4	46.2	47.0	47.8	48.6
Stroke (mm)	2400	2450	2500	2550	2600	2650	2700	2750	2800	2850	2900	2950	3000	3050	3100	3150	3200	3250	3300	3350	3400	3450	3500
L	2769	2819	2869	2919	2969	3019	3069	3119	3169	3219	3269	3319	3369	3419	3469	3519	3569	3619	3669	3719	3769	3819	3869
A	200	50	100	150	200	50	100	150	200	50	100	150	200	50	100	150	200	50	100	150	200	50	100
M	12	13	13	13	13	14	14	14	14	15	15	15	15	16	16	16	16	17	17	17	17	18	18
N	28	30	30	30	30	32	32	32	32	34	34	34	34	36	36	36	36	38	38	38	38	40	40
P	2600	2650	2700	2750	2800	2850	2900	2950	3000	3050	3100	3150	3200	3250	3300	3350	3400	3450	3500	3550	3600	3650	3700
Weight (kg)	49.4	50.2	51.0	51.8	52.6	53.4	54.2	55.0	55.8	56.6	57.4	58.2	59.0	59.8	60.6	61.4	62.2	63.0	63.8	64.6	65.4	66.2	67.0

\* Refer to page 219 for motor mounting part dimensions and the list of attachments.

EBS

EBR

ETS

ECS

ETV

ECV

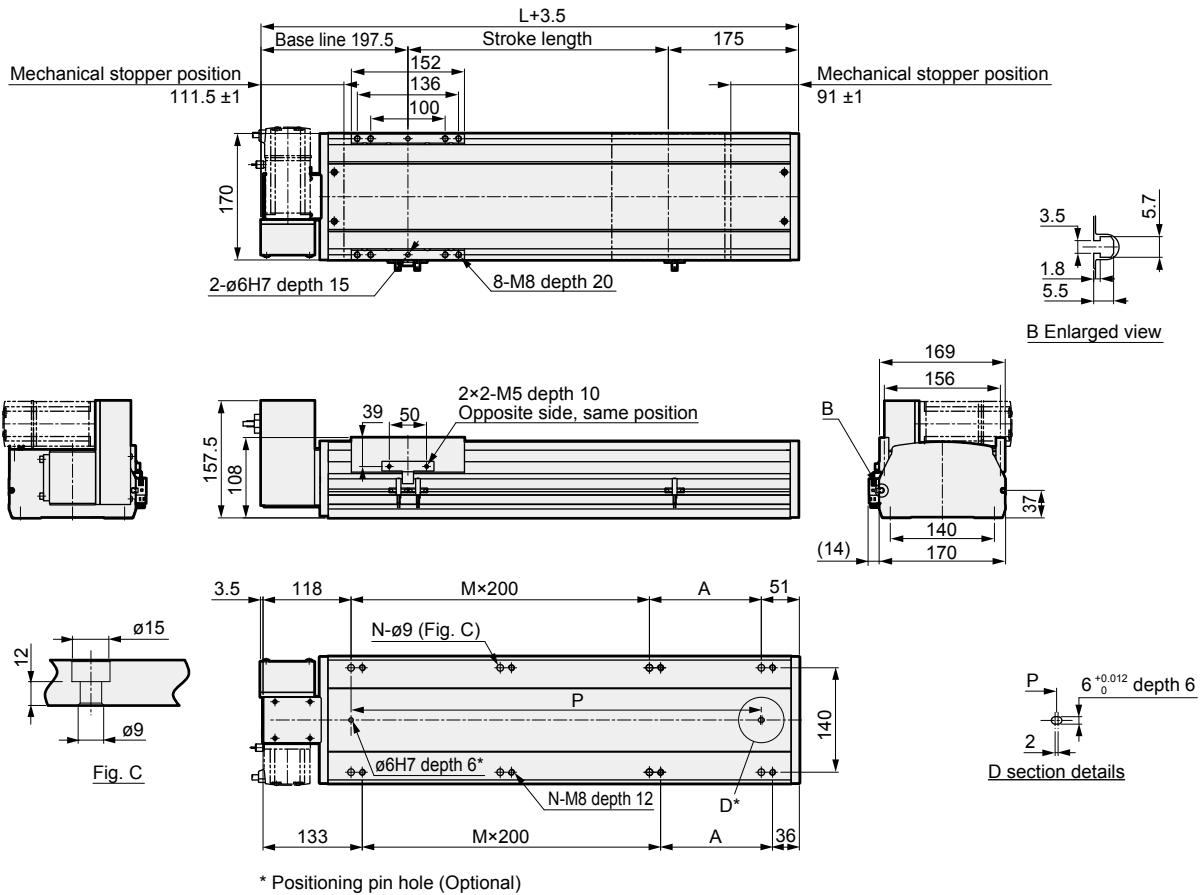
EKS

Safety  
precautions

# ETV-17 Series

## Dimensions Top right motor mounting

### ● ETV-17-\*\*\*\*-S



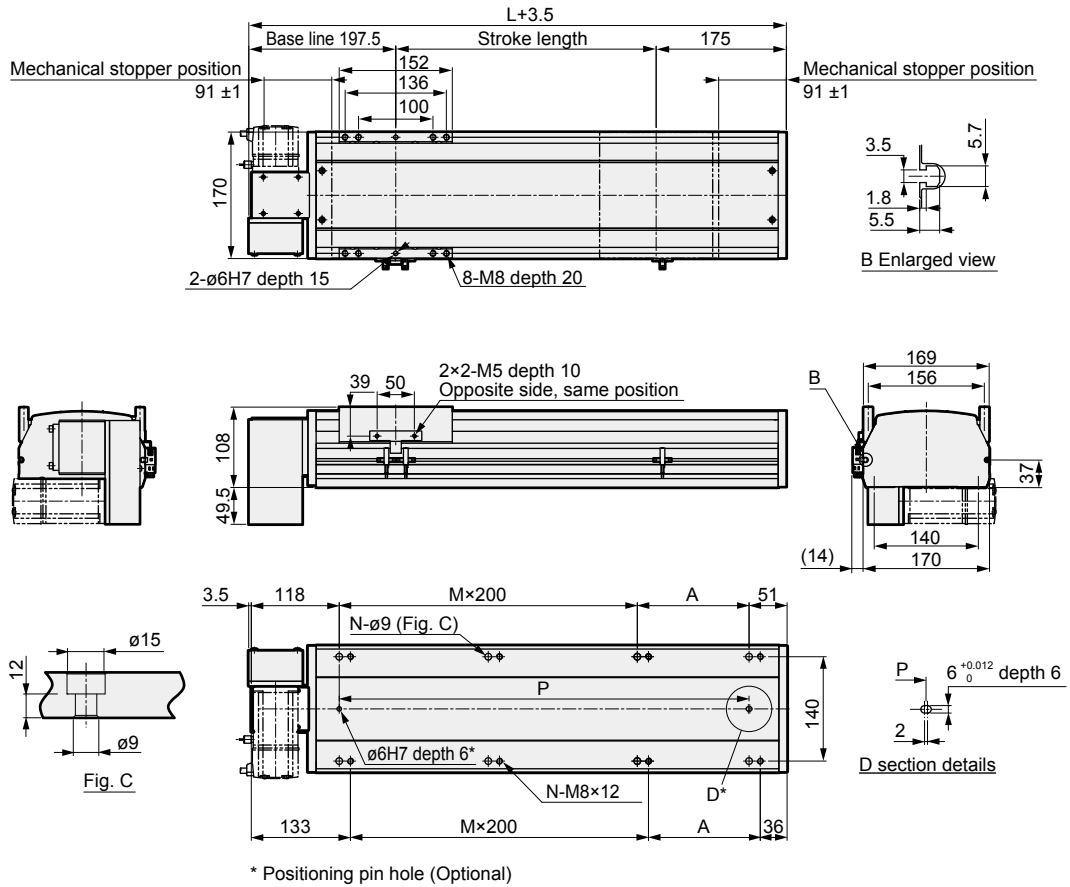
\* Positioning pin hole (Optional)

Stroke (mm)	100	150	200	250	300	350	400	450	500	550	600	650	700	750	800	850	900	950	1000	1050	1100	1150	1200
L	469	519	569	619	669	719	769	819	869	919	969	1019	1069	1119	1169	1219	1269	1319	1369	1419	1469	1519	1569
A	100	150	200	50	100	150	200	50	100	150	200	50	100	150	200	50	100	150	200	50	100	150	200
M	1	1	1	2	2	2	2	3	3	3	3	4	4	4	4	5	5	5	5	6	6	6	6
N	6	6	6	8	8	8	8	10	10	10	10	12	12	12	12	14	14	14	14	16	16	16	16
P	300	350	400	450	500	550	600	650	700	750	800	850	900	950	1000	1050	1100	1150	1200	1250	1300	1350	1400
Weight (kg)	12.0	13.8	14.6	15.4	16.1	16.9	17.7	18.5	19.2	20.0	20.8	21.6	22.3	23.1	23.9	24.7	25.4	26.2	27.0	27.8	28.6	29.4	30.2
Stroke (mm)	1250	1300	1350	1400	1450	1500	1550	1600	1650	1700	1750	1800	1850	1900	1950	2000	2050	2100	2150	2200	2250	2300	2350
L	1619	1669	1719	1769	1819	1869	1919	1969	2019	2069	2119	2169	2219	2269	2319	2369	2419	2469	2519	2569	2619	2669	2719
A	50	100	150	200	50	100	150	200	50	100	150	200	50	100	150	200	50	100	150	200	50	100	150
M	7	7	7	7	8	8	8	8	9	9	9	9	10	10	10	10	11	11	11	11	12	12	12
N	18	18	18	18	20	20	20	20	22	22	22	22	24	24	24	24	26	26	26	26	28	28	28
P	1450	1500	1550	1600	1650	1700	1750	1800	1850	1900	1950	2000	2050	2100	2150	2200	2250	2300	2350	2400	2450	2500	2550
Weight (kg)	31.0	31.8	32.6	33.4	34.2	35.0	35.8	36.6	37.4	38.2	39.0	39.8	40.6	41.4	42.2	43.0	43.8	44.6	45.4	46.2	47.0	47.8	48.6
Stroke (mm)	2400	2450	2500	2550	2600	2650	2700	2750	2800	2850	2900	2950	3000	3050	3100	3150	3200	3250	3300	3350	3400	3450	3500
L	2769	2819	2869	2919	2969	3019	3069	3119	3169	3219	3269	3319	3369	3419	3469	3519	3569	3619	3669	3719	3769	3819	3869
A	200	50	100	150	200	50	100	150	200	50	100	150	200	50	100	150	200	50	100	150	200	50	100
M	12	13	13	13	13	14	14	14	14	15	15	15	15	16	16	16	16	17	17	17	17	18	18
N	28	30	30	30	30	32	32	32	32	34	34	34	34	36	36	36	36	38	38	38	38	40	40
P	2600	2650	2700	2750	2800	2850	2900	2950	3000	3050	3100	3150	3200	3250	3300	3350	3400	3450	3500	3550	3600	3650	3700
Weight (kg)	49.4	50.2	51.0	51.8	52.6	53.4	54.2	55.0	55.8	56.6	57.4	58.2	59.0	59.8	60.6	61.4	62.2	63.0	63.8	64.6	65.4	66.2	67.0

\* Refer to page 219 for motor mounting part dimensions and the list of attachments.

### Dimensions Bottom right motor mounting

#### ● ETV-17-\*\*\*\*-T



Stroke (mm)	100	150	200	250	300	350	400	450	500	550	600	650	700	750	800	850	900	950	1000	1050	1100	1150	1200
L	469	519	569	619	669	719	769	819	869	919	969	1019	1069	1119	1169	1219	1269	1319	1369	1419	1469	1519	1569
A	100	150	200	50	100	150	200	50	100	150	200	50	100	150	200	50	100	150	200	50	100	150	200
M	1	1	1	2	2	2	2	3	3	3	3	4	4	4	4	5	5	5	5	6	6	6	6
N	6	6	6	8	8	8	8	10	10	10	10	12	12	12	12	14	14	14	14	16	16	16	16
P	300	350	400	450	500	550	600	650	700	750	800	850	900	950	1000	1050	1100	1150	1200	1250	1300	1350	1400
Weight (kg)	12.0	13.8	14.6	15.4	16.1	16.9	17.7	18.5	19.2	20.0	20.8	21.6	22.3	23.1	23.9	24.7	25.4	26.2	27.0	27.8	28.6	29.4	30.2
Stroke (mm)	1250	1300	1350	1400	1450	1500	1550	1600	1650	1700	1750	1800	1850	1900	1950	2000	2050	2100	2150	2200	2250	2300	2350
L	1619	1669	1719	1769	1819	1869	1919	1969	2019	2069	2119	2169	2219	2269	2319	2369	2419	2469	2519	2569	2619	2669	2719
A	50	100	150	200	50	100	150	200	50	100	150	200	50	100	150	200	50	100	150	200	50	100	150
M	7	7	7	7	8	8	8	8	9	9	9	9	10	10	10	10	11	11	11	11	12	12	12
N	18	18	18	18	20	20	20	20	22	22	22	22	24	24	24	24	26	26	26	26	28	28	28
P	1450	1500	1550	1600	1650	1700	1750	1800	1850	1900	1950	2000	2050	2100	2150	2200	2250	2300	2350	2400	2450	2500	2550
Weight (kg)	31.0	31.8	32.6	33.4	34.2	35.0	35.8	36.6	37.4	38.2	39.0	39.8	40.6	41.4	42.2	43.0	43.8	44.6	45.4	46.2	47.0	47.8	48.6
Stroke (mm)	2400	2450	2500	2550	2600	2650	2700	2750	2800	2850	2900	2950	3000	3050	3100	3150	3200	3250	3300	3350	3400	3450	3500
L	2769	2819	2869	2919	2969	3019	3069	3119	3169	3219	3269	3319	3369	3419	3469	3519	3569	3619	3669	3719	3769	3819	3869
A	200	50	100	150	200	50	100	150	200	50	100	150	200	50	100	150	200	50	100	150	200	50	100
M	12	13	13	13	13	14	14	14	14	15	15	15	15	16	16	16	16	17	17	17	17	18	18
N	28	30	30	30	30	32	32	32	32	34	34	34	34	36	36	36	36	38	38	38	38	40	40
P	2600	2650	2700	2750	2800	2850	2900	2950	3000	3050	3100	3150	3200	3250	3300	3350	3400	3450	3500	3550	3600	3650	3700
Weight (kg)	49.4	50.2	51.0	51.8	52.6	53.4	54.2	55.0	55.8	56.6	57.4	58.2	59.0	59.8	60.6	61.4	62.2	63.0	63.8	64.6	65.4	66.2	67.0

\* Refer to page 219 for motor mounting part dimensions and the list of attachments.

EBS

EBR

ETS

ECS

ETV

ECV

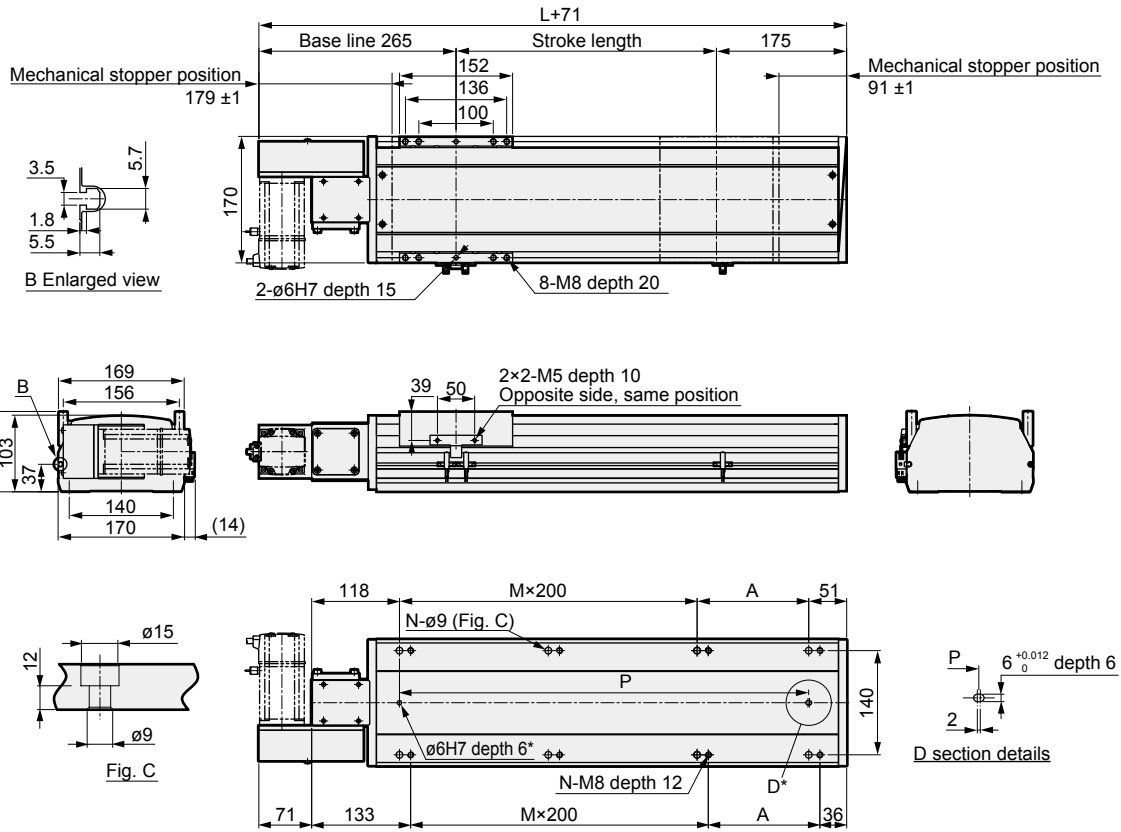
EKS

Safety  
precautions

# ETV-17 Series

## Dimensions Left motor mounting

### ● ETV-17-\*\*\*\*-L



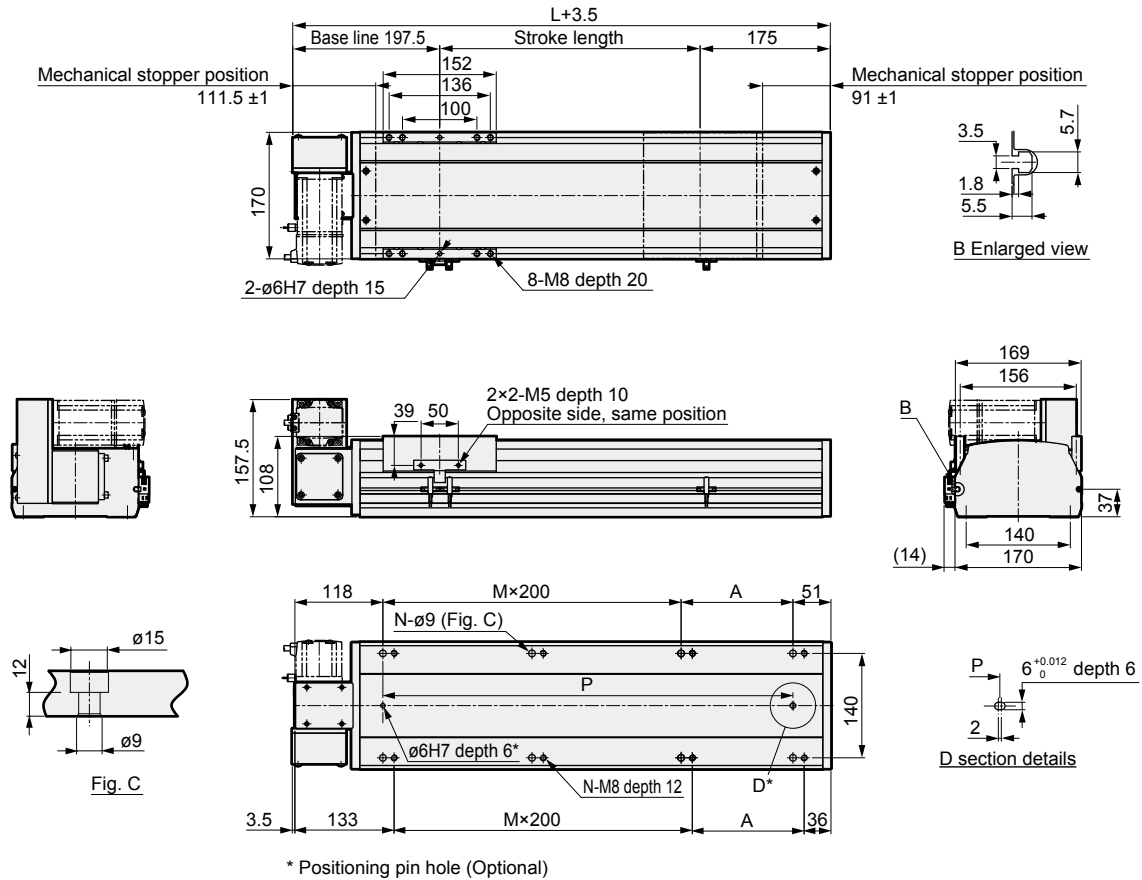
\* Positioning pin hole (Optional)

Stroke (mm)	100	150	200	250	300	350	400	450	500	550	600	650	700	750	800	850	900	950	1000	1050	1100	1150	1200
L	469	519	569	619	669	719	769	819	869	919	969	1019	1069	1119	1169	1219	1269	1319	1369	1419	1469	1519	1569
A	100	150	200	50	100	150	200	50	100	150	200	50	100	150	200	50	100	150	200	50	100	150	200
M	1	1	1	2	2	2	2	3	3	3	3	4	4	4	4	5	5	5	5	6	6	6	6
N	6	6	6	8	8	8	8	10	10	10	10	12	12	12	12	14	14	14	14	16	16	16	16
P	300	350	400	450	500	550	600	650	700	750	800	850	900	950	1000	1050	1100	1150	1200	1250	1300	1350	1400
Weight (kg)	12.0	13.8	14.6	15.4	16.1	16.9	17.7	18.5	19.2	20.0	20.8	21.6	22.3	23.1	23.9	24.7	25.4	26.2	27.0	27.8	28.6	29.4	30.2
Stroke (mm)	1250	1300	1350	1400	1450	1500	1550	1600	1650	1700	1750	1800	1850	1900	1950	2000	2050	2100	2150	2200	2250	2300	2350
L	1619	1669	1719	1769	1819	1869	1919	1969	2019	2069	2119	2169	2219	2269	2319	2369	2419	2469	2519	2569	2619	2669	2719
A	50	100	150	200	50	100	150	200	50	100	150	200	50	100	150	200	50	100	150	200	50	100	150
M	7	7	7	7	8	8	8	8	9	9	9	9	10	10	10	10	11	11	11	11	12	12	12
N	18	18	18	18	20	20	20	20	22	22	22	22	24	24	24	24	26	26	26	26	28	28	28
P	1450	1500	1550	1600	1650	1700	1750	1800	1850	1900	1950	2000	2050	2100	2150	2200	2250	2300	2350	2400	2450	2500	2550
Weight (kg)	31.0	31.8	32.6	33.4	34.2	35.0	35.8	36.6	37.4	38.2	39.0	39.8	40.6	41.4	42.2	43.0	43.8	44.6	45.4	46.2	47.0	47.8	48.6
Stroke (mm)	2400	2450	2500	2550	2600	2650	2700	2750	2800	2850	2900	2950	3000	3050	3100	3150	3200	3250	3300	3350	3400	3450	3500
L	2769	2819	2869	2919	2969	3019	3069	3119	3169	3219	3269	3319	3369	3419	3469	3519	3569	3619	3669	3719	3769	3819	3869
A	200	50	100	150	200	50	100	150	200	50	100	150	200	50	100	150	200	50	100	150	200	50	100
M	12	13	13	13	13	14	14	14	14	15	15	15	15	16	16	16	16	17	17	17	17	18	18
N	28	30	30	30	30	32	32	32	32	34	34	34	34	36	36	36	36	38	38	38	38	40	40
P	2600	2650	2700	2750	2800	2850	2900	2950	3000	3050	3100	3150	3200	3250	3300	3350	3400	3450	3500	3550	3600	3650	3700
Weight (kg)	49.4	50.2	51.0	51.8	52.6	53.4	54.2	55.0	55.8	56.6	57.4	58.2	59.0	59.8	60.6	61.4	62.2	63.0	63.8	64.6	65.4	66.2	67.0

\* Refer to page 219 for motor mounting part dimensions and the list of attachments.

### Dimensions Top left motor mounting

#### ● ETV-17-\*\*\*\*-V



Stroke (mm)	100	150	200	250	300	350	400	450	500	550	600	650	700	750	800	850	900	950	1000	1050	1100	1150	1200
L	469	519	569	619	669	719	769	819	869	919	969	1019	1069	1119	1169	1219	1269	1319	1369	1419	1469	1519	1569
A	100	150	200	50	100	150	200	50	100	150	200	50	100	150	200	50	100	150	200	50	100	150	200
M	1	1	1	2	2	2	2	3	3	3	3	4	4	4	4	5	5	5	5	6	6	6	6
N	6	6	6	8	8	8	8	10	10	10	10	12	12	12	12	14	14	14	14	16	16	16	16
P	300	350	400	450	500	550	600	650	700	750	800	850	900	950	1000	1050	1100	1150	1200	1250	1300	1350	1400
Weight (kg)	12.0	13.8	14.6	15.4	16.1	16.9	17.7	18.5	19.2	20.0	20.8	21.6	22.3	23.1	23.9	24.7	25.4	26.2	27.0	27.8	28.6	29.4	30.2
Stroke (mm)	1250	1300	1350	1400	1450	1500	1550	1600	1650	1700	1750	1800	1850	1900	1950	2000	2050	2100	2150	2200	2250	2300	2350
L	1619	1669	1719	1769	1819	1869	1919	1969	2019	2069	2119	2169	2219	2269	2319	2369	2419	2469	2519	2569	2619	2669	2719
A	50	100	150	200	50	100	150	200	50	100	150	200	50	100	150	200	50	100	150	200	50	100	150
M	7	7	7	7	8	8	8	8	9	9	9	9	10	10	10	10	11	11	11	11	12	12	12
N	18	18	18	18	20	20	20	20	22	22	22	22	24	24	24	24	26	26	26	26	28	28	28
P	1450	1500	1550	1600	1650	1700	1750	1800	1850	1900	1950	2000	2050	2100	2150	2200	2250	2300	2350	2400	2450	2500	2550
Weight (kg)	31.0	31.8	32.6	33.4	34.2	35.0	35.8	36.6	37.4	38.2	39.0	39.8	40.6	41.4	42.2	43.0	43.8	44.6	45.4	46.2	47.0	47.8	48.6
Stroke (mm)	2400	2450	2500	2550	2600	2650	2700	2750	2800	2850	2900	2950	3000	3050	3100	3150	3200	3250	3300	3350	3400	3450	3500
L	2769	2819	2869	2919	2969	3019	3069	3119	3169	3219	3269	3319	3369	3419	3469	3519	3569	3619	3669	3719	3769	3819	3869
A	200	50	100	150	200	50	100	150	200	50	100	150	200	50	100	150	200	50	100	150	200	50	100
M	12	13	13	13	13	14	14	14	14	15	15	15	15	16	16	16	16	17	17	17	17	18	18
N	28	30	30	30	30	32	32	32	32	34	34	34	34	36	36	36	36	38	38	38	38	40	40
P	2600	2650	2700	2750	2800	2850	2900	2950	3000	3050	3100	3150	3200	3250	3300	3350	3400	3450	3500	3550	3600	3650	3700
Weight (kg)	49.4	50.2	51.0	51.8	52.6	53.4	54.2	55.0	55.8	56.6	57.4	58.2	59.0	59.8	60.6	61.4	62.2	63.0	63.8	64.6	65.4	66.2	67.0

\* Refer to page 219 for motor mounting part dimensions and the list of attachments.

EBS

EBR

ETS

ECS

ETV

ECV

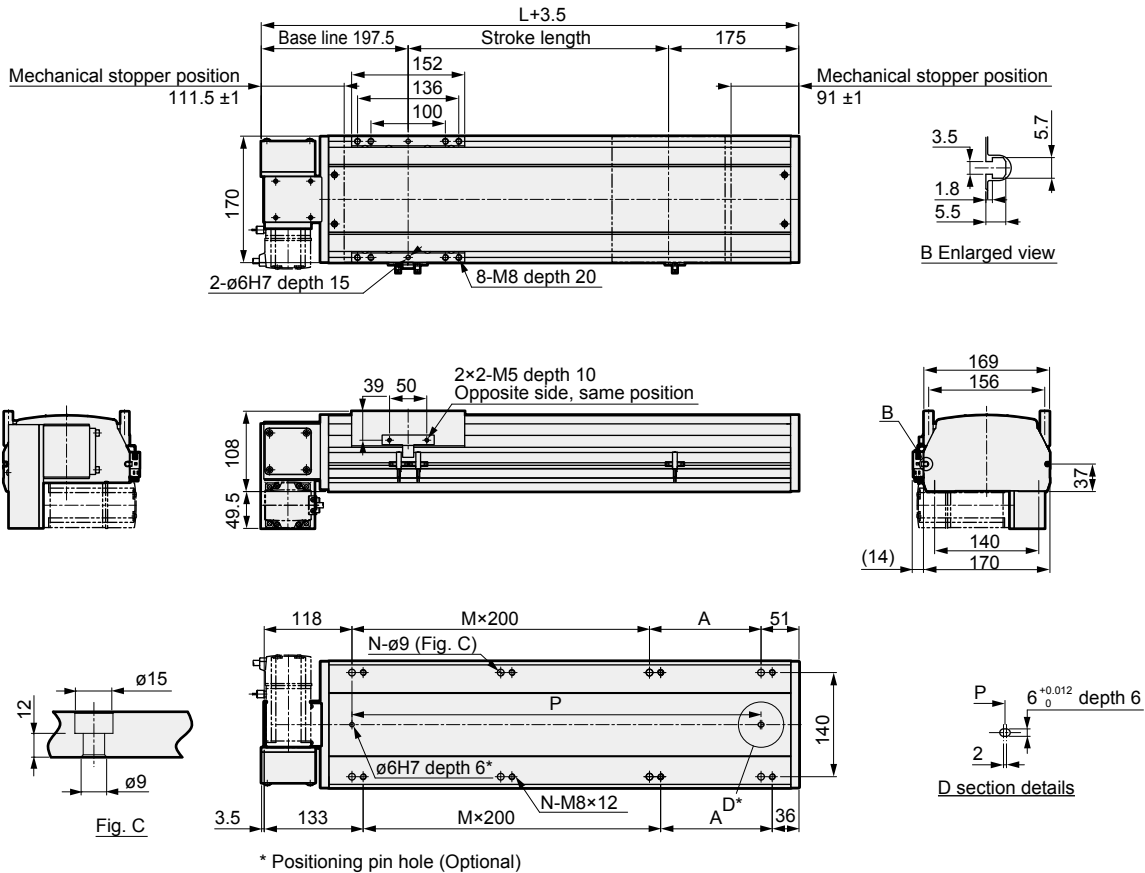
EKS

Safety precautions

# ETV-17 Series

## Dimensions Bottom left motor mounting

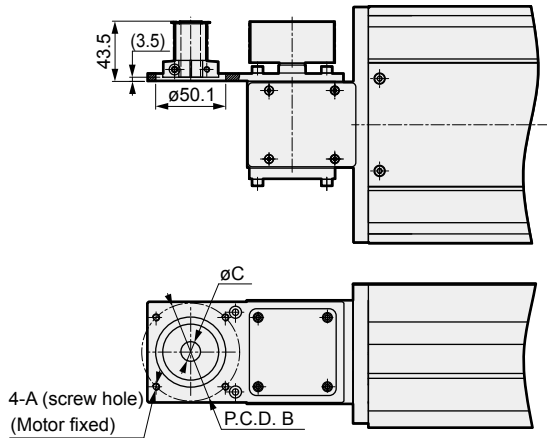
### ● ETV-17-\*\*\*\*-W



Stroke (mm)	100	150	200	250	300	350	400	450	500	550	600	650	700	750	800	850	900	950	1000	1050	1100	1150	1200
L	469	519	569	619	669	719	769	819	869	919	969	1019	1069	1119	1169	1219	1269	1319	1369	1419	1469	1519	1569
A	100	150	200	50	100	150	200	50	100	150	200	50	100	150	200	50	100	150	200	50	100	150	200
M	1	1	1	2	2	2	2	3	3	3	3	4	4	4	4	5	5	5	5	6	6	6	6
N	6	6	6	8	8	8	8	10	10	10	10	12	12	12	12	14	14	14	14	16	16	16	16
P	300	350	400	450	500	550	600	650	700	750	800	850	900	950	1000	1050	1100	1150	1200	1250	1300	1350	1400
Weight (kg)	12.0	13.8	14.6	15.4	16.1	16.9	17.7	18.5	19.2	20.0	20.8	21.6	22.3	23.1	23.9	24.7	25.4	26.2	27.0	27.8	28.6	29.4	30.2
Stroke (mm)	1250	1300	1350	1400	1450	1500	1550	1600	1650	1700	1750	1800	1850	1900	1950	2000	2050	2100	2150	2200	2250	2300	2350
L	1619	1669	1719	1769	1819	1869	1919	1969	2019	2069	2119	2169	2219	2269	2319	2369	2419	2469	2519	2569	2619	2669	2719
A	50	100	150	200	50	100	150	200	50	100	150	200	50	100	150	200	50	100	150	200	50	100	150
M	7	7	7	7	8	8	8	8	9	9	9	9	10	10	10	10	11	11	11	11	12	12	12
N	18	18	18	18	20	20	20	20	22	22	22	22	24	24	24	24	26	26	26	26	28	28	28
P	1450	1500	1550	1600	1650	1700	1750	1800	1850	1900	1950	2000	2050	2100	2150	2200	2250	2300	2350	2400	2450	2500	2550
Weight (kg)	31.0	31.8	32.6	33.4	34.2	35.0	35.8	36.6	37.4	38.2	39.0	39.8	40.6	41.4	42.2	43.0	43.8	44.6	45.4	46.2	47.0	47.8	48.6
Stroke (mm)	2400	2450	2500	2550	2600	2650	2700	2750	2800	2850	2900	2950	3000	3050	3100	3150	3200	3250	3300	3350	3400	3450	3500
L	2769	2819	2869	2919	2969	3019	3069	3119	3169	3219	3269	3319	3369	3419	3469	3519	3569	3619	3669	3719	3769	3819	3869
A	200	50	100	150	200	50	100	150	200	50	100	150	200	50	100	150	200	50	100	150	200	50	100
M	12	13	13	13	13	14	14	14	14	15	15	15	15	16	16	16	16	17	17	17	17	18	18
N	28	30	30	30	30	32	32	32	32	34	34	34	34	36	36	36	36	38	38	38	38	40	40
P	2600	2650	2700	2750	2800	2850	2900	2950	3000	3050	3100	3150	3200	3250	3300	3350	3400	3450	3500	3550	3600	3650	3700
Weight (kg)	49.4	50.2	51.0	51.8	52.6	53.4	54.2	55.0	55.8	56.6	57.4	58.2	59.0	59.8	60.6	61.4	62.2	63.0	63.8	64.6	65.4	66.2	67.0

\* Refer to page 219 for the list of motor mounting part dimensions and attachments.

### Motor mounting part



Mounted motor specification	A	B	C	Motor mounting bolt
M 400 W	M5	ø70	ø14	4-M5 × L12
Y 400 W	M5	ø70	ø14	4-M5 × L12
P 400 W	M4	ø70	ø14	4-M4 × L12

### List of attachments

#### [Motor mounting parts]

Mounted motor specification	Timing belt, pulley	Motor size	Motor mounting bolt	
			Size	Quantity
M	Included at shipment	400 W	M5	4
Y			M5	4
P			M4	4

#### [Origin sensor, limit sensor]

Manufacturer	Model	Quantity
OMRON Corporation	EE-SX672	3

\* Refer to page 236 for sensor specifications.

### MEMO

EBS

EBR

ETS

ECS

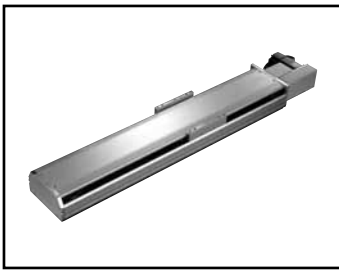
ETV

ECV

EKS

Safety precautions





Electric actuator Belt type

# ETV-22 Series

Selectable motor mounting

● Applicable motor capacity: 750 W

## How to order

**ETV - 22 - 40 010 - R M 8 X N N N N**

**A** Body size

22	Body width 220 mm
----	-------------------

**B** Lead equivalent

40	40 mm
----	-------

**C** Stroke \*1\*2

010	100 mm
to	(In 50 mm increments)
350	3500 mm

**D** Motor mounting direction \*5

R	Right mounting
S	Top right mounting
T	Bottom right mounting
L	Left mounting
V	Top left mounting
W	Bottom left mounting

**E** Mounted motor specification

M	Select mounted
Y	motor specifications
P	from the table below.

**F** Motor capacity

8	750 W
---	-------

**G** Driving belt

X	Standard (rubber)
L	Low dust generation (urethane)

**H** Origin sensor (1 pc.) \*1\*2\*3

N	None
C	Outside Motor side
D	Outside Opposite motor side

**I** Limit sensor (2 pcs.) \*1\*2\*3

N	None
B	Outside

**K** Positioning pin hole

N	None
P	Yes

**J** Grease nipple \*3\*4\*5

N	None (body mounting direction: standard)
R	Clockwise
L	Counterclockwise

Manufacturer	750 W
Mitsubishi Electric Corporation	M
Delta Electronics Co., Ltd.	M
Sanyo Denki Co., Ltd.	-
YASKAWA Electric Corporation	Y
Keyence Corporation	Y
Panasonic Corporation	P
OMRON Corporation	P
Bosch Rexroth Corporation	P

- \*1 Origin sensor and limit sensor are a set. Select "None" for both of them if selecting it for either.
- \*2 The user can adjust the sensor position. (Included at shipment)
- \*3 Contact CKD if you want to use the origin sensor, limit sensor, and grease nipple in the same direction.
- \*4 "Body mounting direction: standard" means that both top side and bottom side mounting are possible.
- \*5 When motor mounting direction is "R", "S", or "T", grease nipple cannot be set to "R". When motor mounting direction is "L", "V", or "W", grease nipple cannot be set to "L".

\* For the motor model No., refer to page 187.

## Specifications

Applicable motor capacity	750 W servo motor	
Drive method	Belt width 50 mm	
Stroke mm	100 to 3500	
Lead equivalent mm	40	
Max. load capacity *1	Horizontal kg	85
	Vertical kg	-
Max. speed mm/s	2000	
Rated thrust *1 N	367	
Repeatability mm	±0.04	
Lost motion	0.1 mm or less	
Operating ambient temperature, humidity	0 to 40°C (no freezing)	
	35 to 80% RH (no condensation)	
Storage ambient temperature, humidity	-10 to 50°C (no freezing)	
	35 to 80% RH (no condensation)	
Atmosphere	No corrosive gas, explosive gas, or dust	

\*1 Rated thrust and max. load capacity are guideline values assuming that the motor mounting can output the rated torque.

## Allowable overhang length

		(mm)			
Horizontal	Lead equivalent	Weight kg	A	B	C
	40	45	1700	650	470
		65	1150	420	310
		85	850	310	225
Wall hanging	Lead equivalent	Weight kg	A	B	C
	40	45	480	650	1700
		65	320	430	1150
		85	230	320	850

\* When using with suspension, select 1/3 of the max. load capacity and allowable overhang length. For the overhang length to the center of gravity of load, use values within the A, B, and C directions.

\* The overhang length when the travel life is 5,000 km.

\* Refer to page 233 for details.

## Stroke and max. speed

		(mm/s)
Stroke	100 to 3500	
Lead equivalent	40	2000

\* The max. speed is the speed when the motor mounted by the customer can output a rotation speed of 3000 rpm.

EBS

EBR

ETS

ECS

ETV

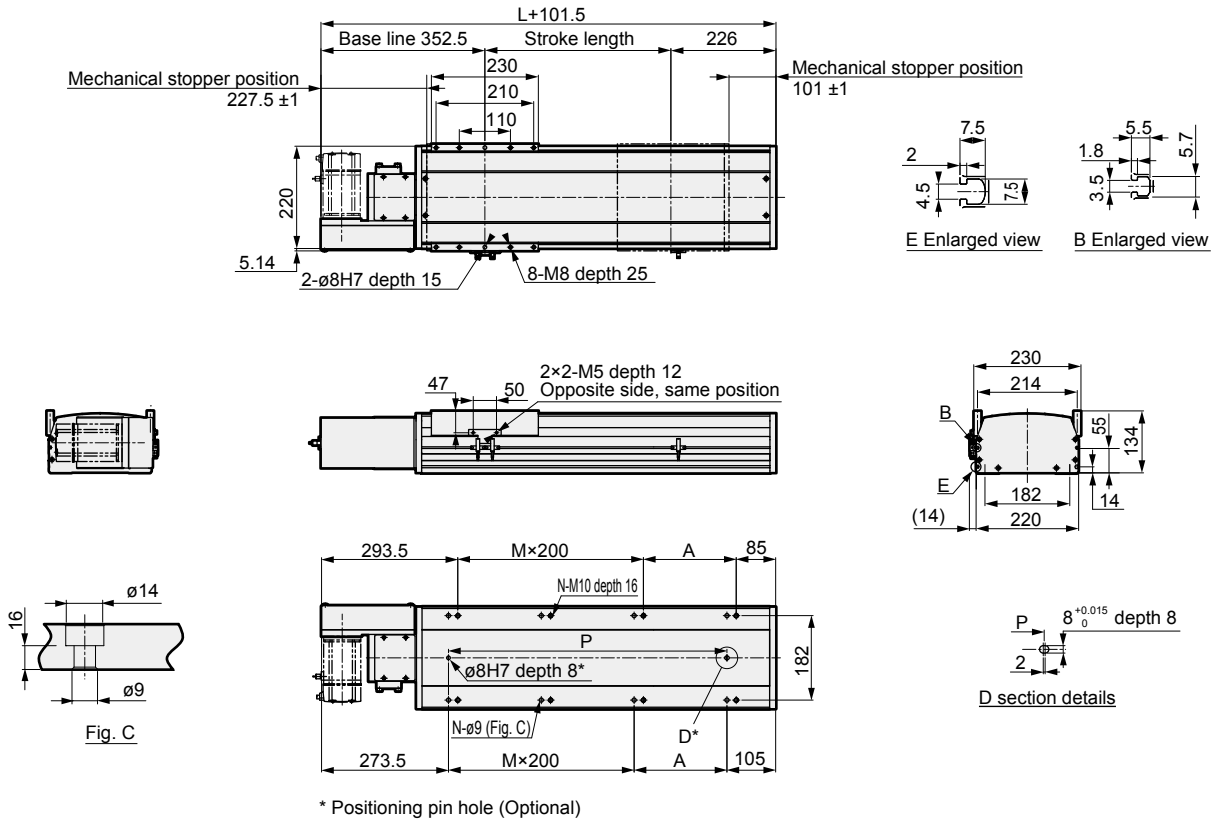
ECV

EKS

Safety precautions

### Dimensions Right motor mounting

#### ● ETV-22-\*\*\*\*-R



Stroke (mm)	100	150	200	250	300	350	400	450	500	550	600	650	700	750	800	850	900	950	1000	1050	1100	1150	1200
L	577	627	677	727	777	827	877	927	977	1027	1077	1127	1177	1227	1277	1327	1377	1427	1477	1527	1577	1627	1677
A	100	150	200	50	100	150	200	50	100	150	200	50	100	150	200	50	100	150	200	50	100	150	200
M	1	1	1	2	2	2	2	3	3	3	3	4	4	4	4	5	5	5	5	6	6	6	6
N	6	6	6	8	8	8	8	10	10	10	10	12	12	12	12	14	14	14	14	16	16	16	16
P	300	350	400	450	500	550	600	650	700	750	800	850	900	950	1000	1050	1100	1150	1200	1250	1300	1350	1400
Weight (kg)	30.0	31.2	32.4	33.6	34.8	36.0	37.2	38.4	39.6	40.8	42.0	43.2	44.4	45.6	46.8	48.0	49.2	50.4	51.6	52.8	54.0	55.2	56.4
Stroke (mm)	1250	1300	1350	1400	1450	1500	1550	1600	1650	1700	1750	1800	1850	1900	1950	2000	2050	2100	2150	2200	2250	2300	2350
L	1727	1777	1827	1877	1927	1977	2027	2077	2127	2177	2227	2277	2327	2377	2427	2477	2527	2577	2627	2677	2727	2777	2827
A	50	100	150	200	50	100	150	200	50	100	150	200	50	100	150	200	50	100	150	200	50	100	150
M	7	7	7	7	8	8	8	8	9	9	9	9	10	10	10	10	11	11	11	11	12	12	12
N	18	18	18	18	20	20	20	20	22	22	22	22	24	24	24	24	26	26	26	26	28	28	28
P	1450	1500	1550	1600	1650	1700	1750	1800	1850	1900	1950	2000	2050	2100	2150	2200	2250	2300	2350	2400	2450	2500	2550
Weight (kg)	57.6	58.8	60.0	61.2	62.4	63.6	64.8	66.0	67.2	68.4	69.6	70.8	72.0	73.2	74.4	75.6	76.8	78.0	79.2	80.4	81.6	82.8	84.0
Stroke (mm)	2400	2450	2500	2550	2600	2650	2700	2750	2800	2850	2900	2950	3000	3050	3100	3150	3200	3250	3300	3350	3400	3450	3500
L	2877	2927	2977	3027	3077	3127	3177	3227	3277	3327	3377	3427	3477	3527	3577	3627	3677	3727	3777	3827	3877	3927	3977
A	200	50	100	150	200	50	100	150	200	50	100	150	200	50	100	150	200	50	100	150	200	50	100
M	12	13	13	13	13	14	14	14	14	15	15	15	15	16	16	16	16	17	17	17	17	18	18
N	28	30	30	30	30	32	32	32	32	34	34	34	34	36	36	36	36	38	38	38	38	40	40
P	2600	2650	2700	2750	2800	2850	2900	2950	3000	3050	3100	3150	3200	3250	3300	3350	3400	3450	3500	3550	3600	3650	3700
Weight (kg)	85.2	86.4	87.6	88.8	90.0	91.2	92.4	93.6	94.8	96.0	97.2	98.4	99.6	100.8	102.0	103.2	104.4	105.6	106.8	108.0	109.2	110.4	111.6

\* Refer to page 227 for the list of motor mounting part dimensions and attachments.

EBS

EBR

ETS

ECS

ETV

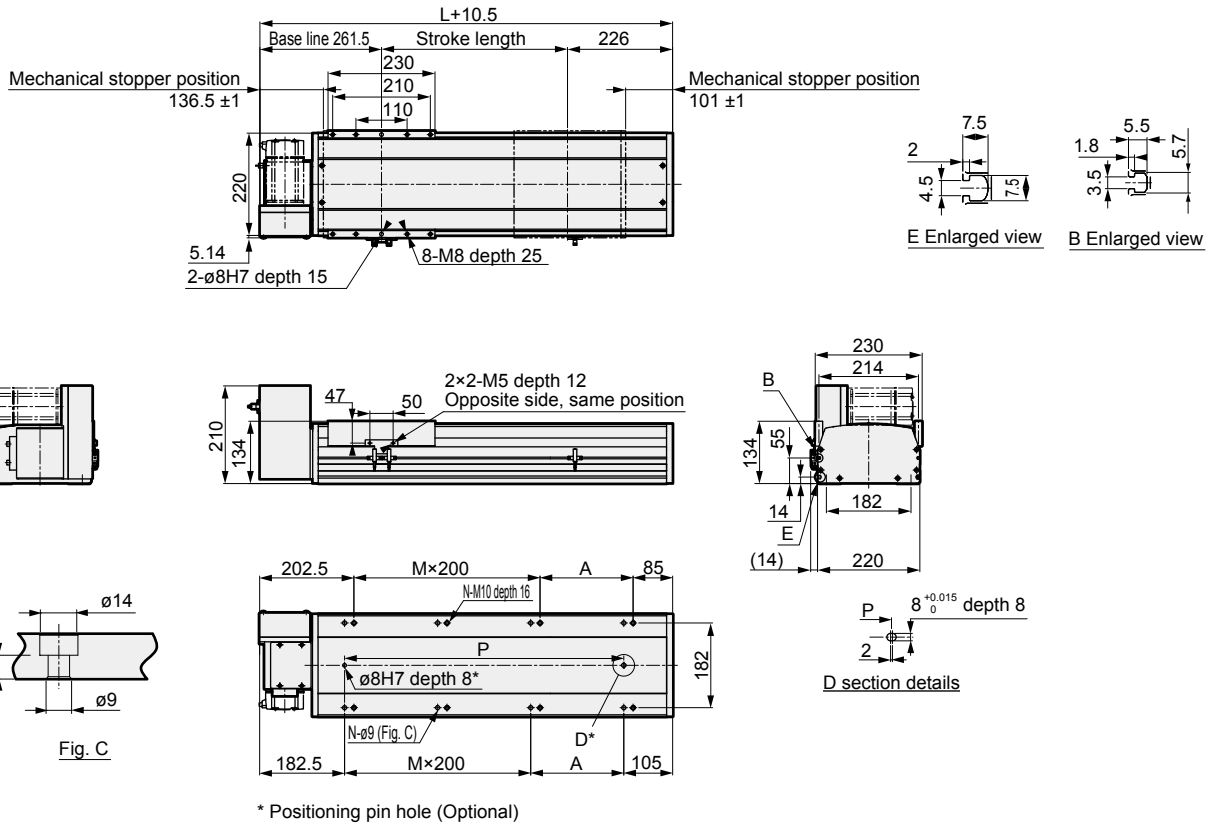
ECV

EKS

Safety precautions

## Dimensions Top right motor mounting

### ● ETV-22-\*\*\*\*\*-S

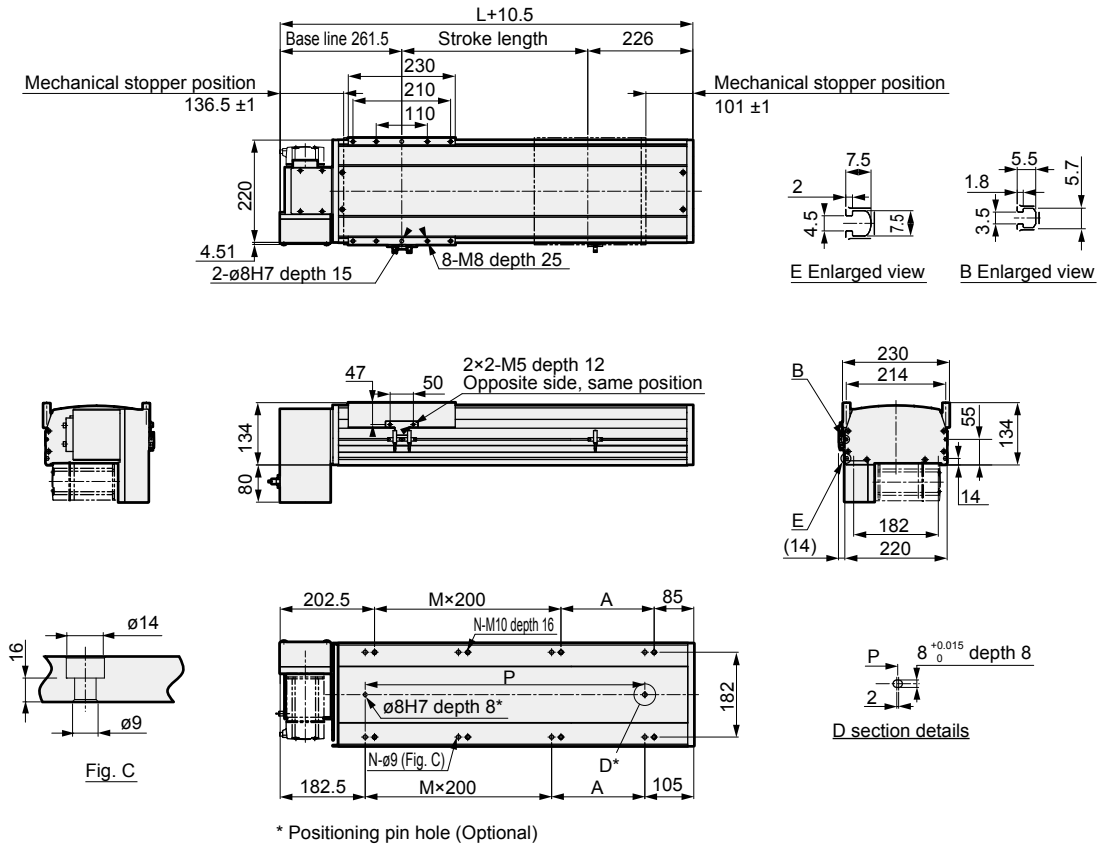


Stroke (mm)	100	150	200	250	300	350	400	450	500	550	600	650	700	750	800	850	900	950	1000	1050	1100	1150	1200
L	577	627	677	727	777	827	877	927	977	1027	1077	1127	1177	1227	1277	1327	1377	1427	1477	1527	1577	1627	1677
A	100	150	200	50	100	150	200	50	100	150	200	50	100	150	200	50	100	150	200	50	100	150	200
M	1	1	1	2	2	2	2	3	3	3	3	4	4	4	4	5	5	5	5	6	6	6	6
N	6	6	6	8	8	8	8	10	10	10	10	12	12	12	12	14	14	14	14	16	16	16	16
P	300	350	400	450	500	550	600	650	700	750	800	850	900	950	1000	1050	1100	1150	1200	1250	1300	1350	1400
Weight (kg)	30.0	31.2	32.4	33.6	34.8	36.0	37.2	38.4	39.6	40.8	42.0	43.2	44.4	45.6	46.8	48.0	49.2	50.4	51.6	52.8	54.0	55.2	56.4
Stroke (mm)	1250	1300	1350	1400	1450	1500	1550	1600	1650	1700	1750	1800	1850	1900	1950	2000	2050	2100	2150	2200	2250	2300	2350
L	1727	1777	1827	1877	1927	1977	2027	2077	2127	2177	2227	2277	2327	2377	2427	2477	2527	2577	2627	2677	2727	2777	2827
A	50	100	150	200	50	100	150	200	50	100	150	200	50	100	150	200	50	100	150	200	50	100	150
M	7	7	7	7	8	8	8	8	9	9	9	9	10	10	10	10	11	11	11	11	12	12	12
N	18	18	18	18	20	20	20	20	22	22	22	22	24	24	24	24	26	26	26	26	28	28	28
P	1450	1500	1550	1600	1650	1700	1750	1800	1850	1900	1950	2000	2050	2100	2150	2200	2250	2300	2350	2400	2450	2500	2550
Weight (kg)	57.6	58.8	60.0	61.2	62.4	63.6	64.8	66.0	67.2	68.4	69.6	70.8	72.0	73.2	74.4	75.6	76.8	78.0	79.2	80.4	81.6	82.8	84.0
Stroke (mm)	2400	2450	2500	2550	2600	2650	2700	2750	2800	2850	2900	2950	3000	3050	3100	3150	3200	3250	3300	3350	3400	3450	3500
L	2877	2927	2977	3027	3077	3127	3177	3227	3277	3327	3377	3427	3477	3527	3577	3627	3677	3727	3777	3827	3877	3927	3977
A	200	50	100	150	200	50	100	150	200	50	100	150	200	50	100	150	200	50	100	150	200	50	100
M	12	13	13	13	13	14	14	14	14	15	15	15	15	16	16	16	16	17	17	17	17	18	18
N	28	30	30	30	30	32	32	32	32	34	34	34	34	36	36	36	36	38	38	38	38	40	40
P	2600	2650	2700	2750	2800	2850	2900	2950	3000	3050	3100	3150	3200	3250	3300	3350	3400	3450	3500	3550	3600	3650	3700
Weight (kg)	85.2	86.4	87.6	88.8	90.0	91.2	92.4	93.6	94.8	96.0	97.2	98.4	99.6	100.8	102.0	103.2	104.4	105.6	106.8	108.0	109.2	110.4	111.6

\* Refer to page 227 for the list of motor mounting part dimensions and attachments.

### Dimensions Bottom right motor mounting

#### ● ETV-22-\*\*\*\*-T



Stroke (mm)	100	150	200	250	300	350	400	450	500	550	600	650	700	750	800	850	900	950	1000	1050	1100	1150	1200
L	577	627	677	727	777	827	877	927	977	1027	1077	1127	1177	1227	1277	1327	1377	1427	1477	1527	1577	1627	1677
A	100	150	200	50	100	150	200	50	100	150	200	50	100	150	200	50	100	150	200	50	100	150	200
M	1	1	1	2	2	2	2	3	3	3	3	4	4	4	4	5	5	5	5	6	6	6	6
N	6	6	6	8	8	8	8	10	10	10	10	12	12	12	12	14	14	14	14	16	16	16	16
P	300	350	400	450	500	550	600	650	700	750	800	850	900	950	1000	1050	1100	1150	1200	1250	1300	1350	1400
Weight (kg)	30.0	31.2	32.4	33.6	34.8	36.0	37.2	38.4	39.6	40.8	42.0	43.2	44.4	45.6	46.8	48.0	49.2	50.4	51.6	52.8	54.0	55.2	56.4
Stroke (mm)	1250	1300	1350	1400	1450	1500	1550	1600	1650	1700	1750	1800	1850	1900	1950	2000	2050	2100	2150	2200	2250	2300	2350
L	1727	1777	1827	1877	1927	1977	2027	2077	2127	2177	2227	2277	2327	2377	2427	2477	2527	2577	2627	2677	2727	2777	2827
A	50	100	150	200	50	100	150	200	50	100	150	200	50	100	150	200	50	100	150	200	50	100	150
M	7	7	7	7	8	8	8	8	9	9	9	9	10	10	10	10	11	11	11	11	12	12	12
N	18	18	18	18	20	20	20	20	22	22	22	22	24	24	24	24	26	26	26	26	28	28	28
P	1450	1500	1550	1600	1650	1700	1750	1800	1850	1900	1950	2000	2050	2100	2150	2200	2250	2300	2350	2400	2450	2500	2550
Weight (kg)	57.6	58.8	60.0	61.2	62.4	63.6	64.8	66.0	67.2	68.4	69.6	70.8	72.0	73.2	74.4	75.6	76.8	78.0	79.2	80.4	81.6	82.8	84.0
Stroke (mm)	2400	2450	2500	2550	2600	2650	2700	2750	2800	2850	2900	2950	3000	3050	3100	3150	3200	3250	3300	3350	3400	3450	3500
L	2877	2927	2977	3027	3077	3127	3177	3227	3277	3327	3377	3427	3477	3527	3577	3627	3677	3727	3777	3827	3877	3927	3977
A	200	50	100	150	200	50	100	150	200	50	100	150	200	50	100	150	200	50	100	150	200	50	100
M	12	13	13	13	13	14	14	14	14	15	15	15	15	16	16	16	16	17	17	17	17	18	18
N	28	30	30	30	30	32	32	32	32	34	34	34	34	36	36	36	36	38	38	38	38	40	40
P	2600	2650	2700	2750	2800	2850	2900	2950	3000	3050	3100	3150	3200	3250	3300	3350	3400	3450	3500	3550	3600	3650	3700
Weight (kg)	85.2	86.4	87.6	88.8	90.0	91.2	92.4	93.6	94.8	96.0	97.2	98.4	99.6	100.8	102.0	103.2	104.4	105.6	106.8	108.0	109.2	110.4	111.6

\* Refer to page 227 for the list of motor mounting part dimensions and attachments.

EBS

EBR

ETS

ECS

ETV

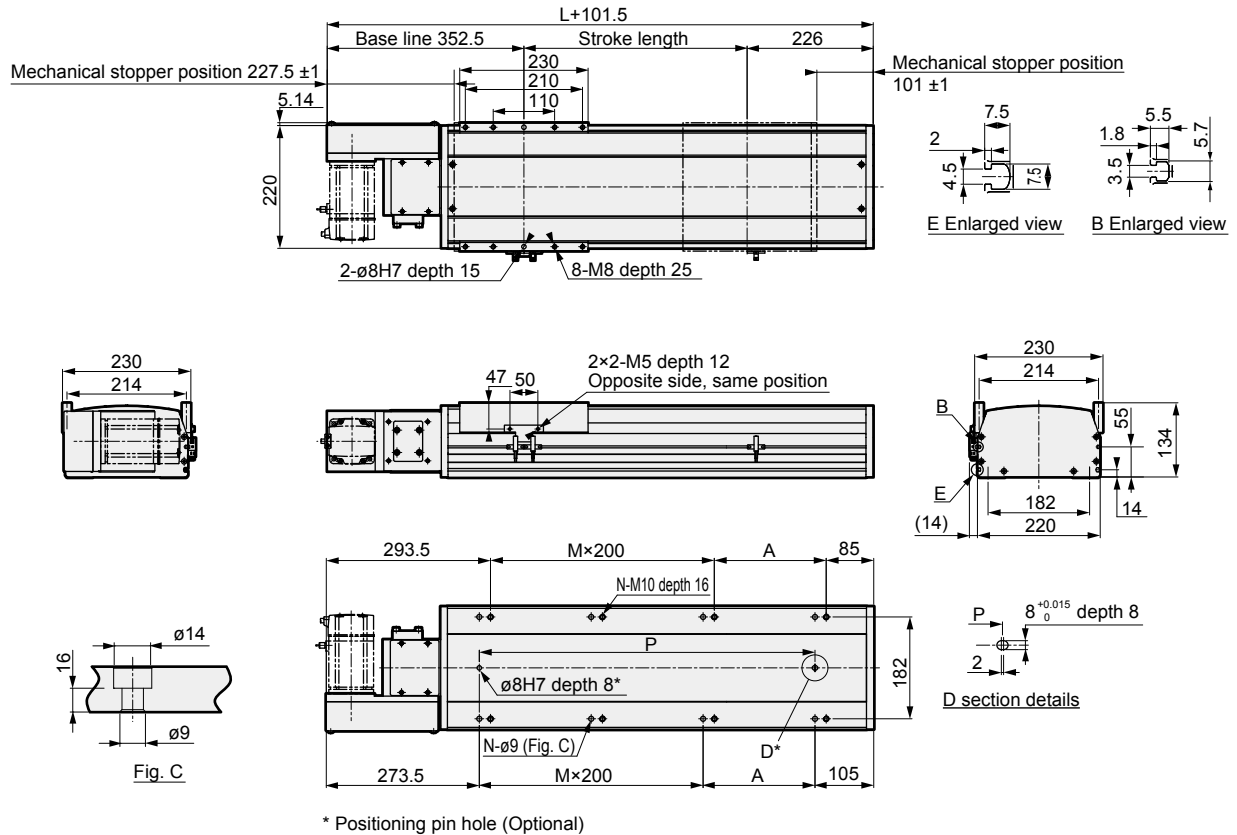
ECV

EKS

Safety  
precautions

## Dimensions Left motor mounting

### ● ETV-22-\*\*\*\*\*-L



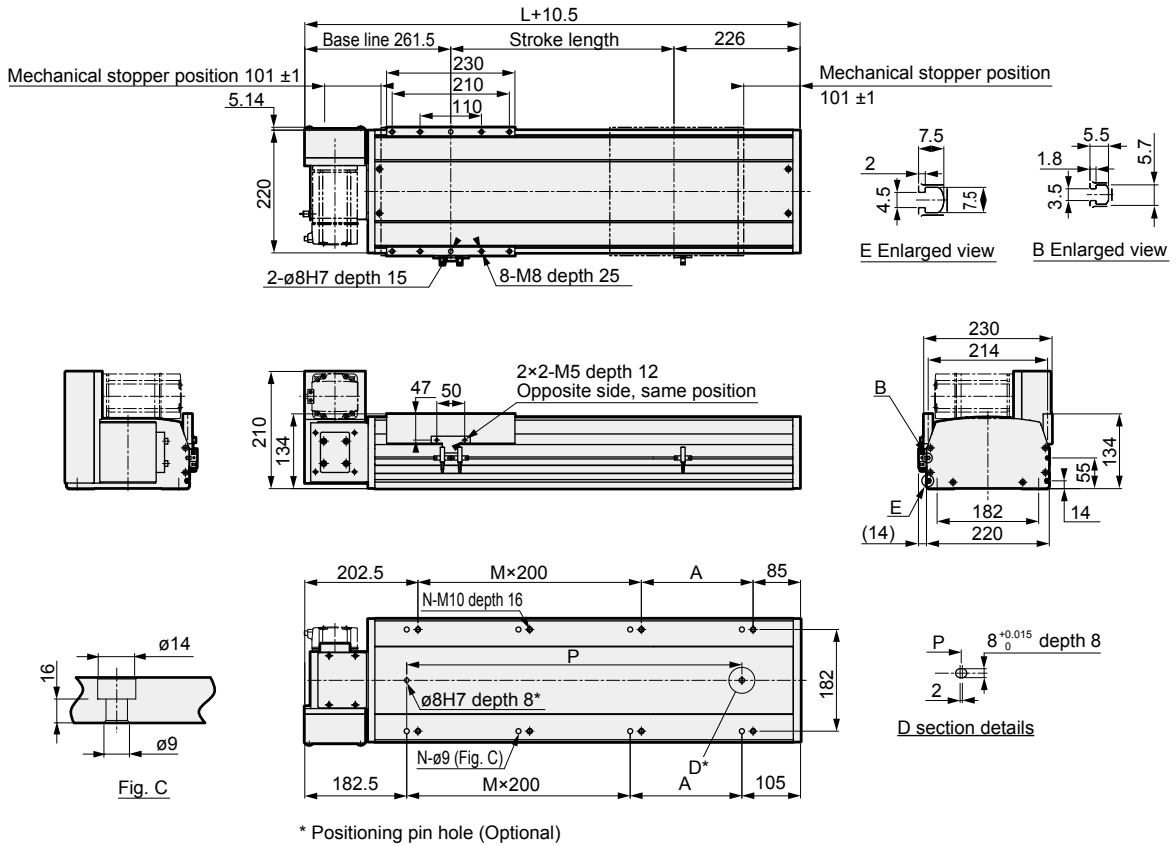
\* Positioning pin hole (Optional)

Stroke (mm)	100	150	200	250	300	350	400	450	500	550	600	650	700	750	800	850	900	950	1000	1050	1100	1150	1200
L	577	627	677	727	777	827	877	927	977	1027	1077	1127	1177	1227	1277	1327	1377	1427	1477	1527	1577	1627	1677
A	100	150	200	50	100	150	200	50	100	150	200	50	100	150	200	50	100	150	200	50	100	150	200
M	1	1	1	2	2	2	2	3	3	3	3	4	4	4	4	5	5	5	5	6	6	6	6
N	6	6	6	8	8	8	8	10	10	10	10	12	12	12	12	14	14	14	14	16	16	16	16
P	300	350	400	450	500	550	600	650	700	750	800	850	900	950	1000	1050	1100	1150	1200	1250	1300	1350	1400
Weight (kg)	30.0	31.2	32.4	33.6	34.8	36.0	37.2	38.4	39.6	40.8	42.0	43.2	44.4	45.6	46.8	48.0	49.2	50.4	51.6	52.8	54.0	55.2	56.4
Stroke (mm)	1250	1300	1350	1400	1450	1500	1550	1600	1650	1700	1750	1800	1850	1900	1950	2000	2050	2100	2150	2200	2250	2300	2350
L	1727	1777	1827	1877	1927	1977	2027	2077	2127	2177	2227	2277	2327	2377	2427	2477	2527	2577	2627	2677	2727	2777	2827
A	50	100	150	200	50	100	150	200	50	100	150	200	50	100	150	200	50	100	150	200	50	100	150
M	7	7	7	7	8	8	8	8	9	9	9	9	10	10	10	10	11	11	11	11	12	12	12
N	18	18	18	18	20	20	20	20	22	22	22	22	24	24	24	24	26	26	26	26	28	28	28
P	1450	1500	1550	1600	1650	1700	1750	1800	1850	1900	1950	2000	2050	2100	2150	2200	2250	2300	2350	2400	2450	2500	2550
Weight (kg)	57.6	58.8	60.0	61.2	62.4	63.6	64.8	66.0	67.2	68.4	69.6	70.8	72.0	73.2	74.4	75.6	76.8	78.0	79.2	80.4	81.6	82.8	84.0
Stroke (mm)	2400	2450	2500	2550	2600	2650	2700	2750	2800	2850	2900	2950	3000	3050	3100	3150	3200	3250	3300	3350	3400	3450	3500
L	2877	2927	2977	3027	3077	3127	3177	3227	3277	3327	3377	3427	3477	3527	3577	3627	3677	3727	3777	3827	3877	3927	3977
A	200	50	100	150	200	50	100	150	200	50	100	150	200	50	100	150	200	50	100	150	200	50	100
M	12	13	13	13	13	14	14	14	14	15	15	15	15	16	16	16	16	17	17	17	17	18	18
N	28	30	30	30	30	32	32	32	32	34	34	34	34	36	36	36	36	38	38	38	38	40	40
P	2600	2650	2700	2750	2800	2850	2900	2950	3000	3050	3100	3150	3200	3250	3300	3350	3400	3450	3500	3550	3600	3650	3700
Weight (kg)	85.2	86.4	87.6	88.8	90.0	91.2	92.4	93.6	94.8	96.0	97.2	98.4	99.6	100.8	102.0	103.2	104.4	105.6	106.8	108.0	109.2	110.4	111.6

\* Refer to page 227 for the list of motor mounting part dimensions and attachments.

### Dimensions Top left motor mounting

● ETV-22-\*\*\*\*-V



Stroke (mm)	100	150	200	250	300	350	400	450	500	550	600	650	700	750	800	850	900	950	1000	1050	1100	1150	1200
L	577	627	677	727	777	827	877	927	977	1027	1077	1127	1177	1227	1277	1327	1377	1427	1477	1527	1577	1627	1677
A	100	150	200	50	100	150	200	50	100	150	200	50	100	150	200	50	100	150	200	50	100	150	200
M	1	1	1	2	2	2	2	3	3	3	3	4	4	4	4	5	5	5	5	6	6	6	6
N	6	6	6	8	8	8	8	10	10	10	10	12	12	12	12	14	14	14	14	16	16	16	16
P	300	350	400	450	500	550	600	650	700	750	800	850	900	950	1000	1050	1100	1150	1200	1250	1300	1350	1400
Weight (kg)	30.0	31.2	32.4	33.6	34.8	36.0	37.2	38.4	39.6	40.8	42.0	43.2	44.4	45.6	46.8	48.0	49.2	50.4	51.6	52.8	54.0	55.2	56.4
Stroke (mm)	1250	1300	1350	1400	1450	1500	1550	1600	1650	1700	1750	1800	1850	1900	1950	2000	2050	2100	2150	2200	2250	2300	2350
L	1727	1777	1827	1877	1927	1977	2027	2077	2127	2177	2227	2277	2327	2377	2427	2477	2527	2577	2627	2677	2727	2777	2827
A	50	100	150	200	50	100	150	200	50	100	150	200	50	100	150	200	50	100	150	200	50	100	150
M	7	7	7	7	8	8	8	8	9	9	9	9	10	10	10	10	11	11	11	11	12	12	12
N	18	18	18	18	20	20	20	20	22	22	22	22	24	24	24	24	26	26	26	26	28	28	28
P	1450	1500	1550	1600	1650	1700	1750	1800	1850	1900	1950	2000	2050	2100	2150	2200	2250	2300	2350	2400	2450	2500	2550
Weight (kg)	57.6	58.8	60.0	61.2	62.4	63.6	64.8	66.0	67.2	68.4	69.6	70.8	72.0	73.2	74.4	75.6	76.8	78.0	79.2	80.4	81.6	82.8	84.0
Stroke (mm)	2400	2450	2500	2550	2600	2650	2700	2750	2800	2850	2900	2950	3000	3050	3100	3150	3200	3250	3300	3350	3400	3450	3500
L	2877	2927	2977	3027	3077	3127	3177	3227	3277	3327	3377	3427	3477	3527	3577	3627	3677	3727	3777	3827	3877	3927	3977
A	200	50	100	150	200	50	100	150	200	50	100	150	200	50	100	150	200	50	100	150	200	50	100
M	12	13	13	13	13	14	14	14	14	15	15	15	15	16	16	16	16	17	17	17	17	18	18
N	28	30	30	30	30	32	32	32	32	34	34	34	34	36	36	36	36	38	38	38	38	40	40
P	2600	2650	2700	2750	2800	2850	2900	2950	3000	3050	3100	3150	3200	3250	3300	3350	3400	3450	3500	3550	3600	3650	3700
Weight (kg)	85.2	86.4	87.6	88.8	90.0	91.2	92.4	93.6	94.8	96.0	97.2	98.4	99.6	100.8	102.0	103.2	104.4	105.6	106.8	108.0	109.2	110.4	111.6

\* Refer to page 227 for the list of motor mounting part dimensions and attachments.

EBS

EBR

ETS

ECS

ETV

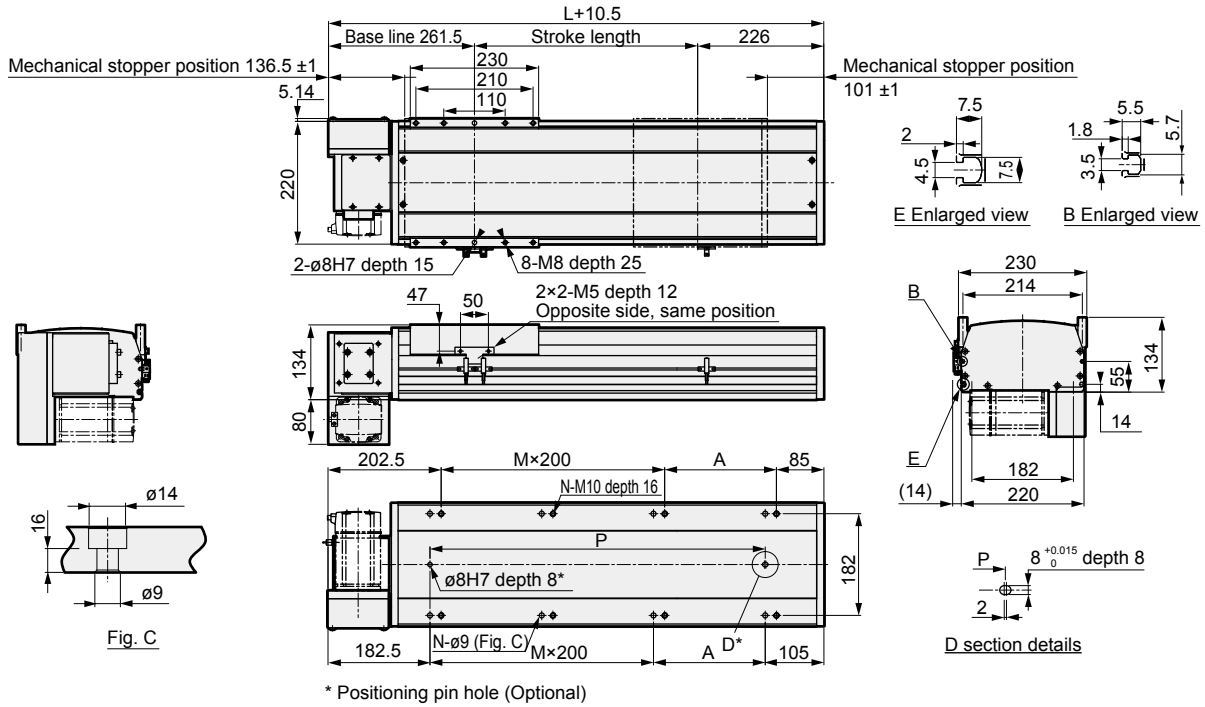
ECV

EKS

Safety  
precautions

## Dimensions Bottom left motor mounting

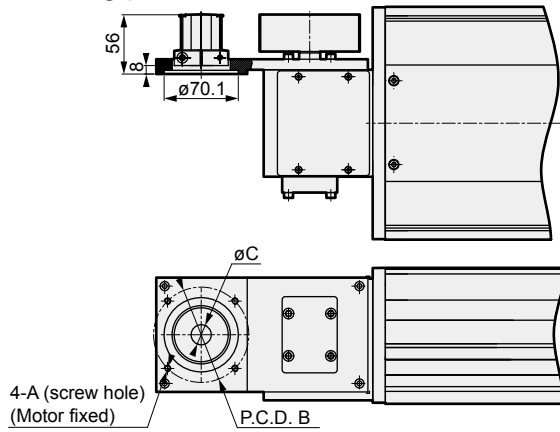
### ● ETV-22-\*\*\*\*-W



Stroke (mm)	100	150	200	250	300	350	400	450	500	550	600	650	700	750	800	850	900	950	1000	1050	1100	1150	1200
L	577	627	677	727	777	827	877	927	977	1027	1077	1127	1177	1227	1277	1327	1377	1427	1477	1527	1577	1627	1677
A	100	150	200	50	100	150	200	50	100	150	200	50	100	150	200	50	100	150	200	50	100	150	200
M	1	1	1	2	2	2	2	3	3	3	3	4	4	4	4	5	5	5	5	6	6	6	6
N	6	6	6	8	8	8	8	10	10	10	10	12	12	12	12	14	14	14	14	16	16	16	16
P	300	350	400	450	500	550	600	650	700	750	800	850	900	950	1000	1050	1100	1150	1200	1250	1300	1350	1400
Weight (kg)	30.0	31.2	32.4	33.6	34.8	36.0	37.2	38.4	39.6	40.8	42.0	43.2	44.4	45.6	46.8	48.0	49.2	50.4	51.6	52.8	54.0	55.2	56.4
Stroke (mm)	1250	1300	1350	1400	1450	1500	1550	1600	1650	1700	1750	1800	1850	1900	1950	2000	2050	2100	2150	2200	2250	2300	2350
L	1727	1777	1827	1877	1927	1977	2027	2077	2127	2177	2227	2277	2327	2377	2427	2477	2527	2577	2627	2677	2727	2777	2827
A	50	100	150	200	50	100	150	200	50	100	150	200	50	100	150	200	50	100	150	200	50	100	150
M	7	7	7	7	8	8	8	8	9	9	9	9	10	10	10	10	11	11	11	11	12	12	12
N	18	18	18	18	20	20	20	20	22	22	22	22	24	24	24	24	26	26	26	26	28	28	28
P	1450	1500	1550	1600	1650	1700	1750	1800	1850	1900	1950	2000	2050	2100	2150	2200	2250	2300	2350	2400	2450	2500	2550
Weight (kg)	57.6	58.8	60.0	61.2	62.4	63.6	64.8	66.0	67.2	68.4	69.6	70.8	72.0	73.2	74.4	75.6	76.8	78.0	79.2	80.4	81.6	82.8	84.0
Stroke (mm)	2400	2450	2500	2550	2600	2650	2700	2750	2800	2850	2900	2950	3000	3050	3100	3150	3200	3250	3300	3350	3400	3450	3500
L	2877	2927	2977	3027	3077	3127	3177	3227	3277	3327	3377	3427	3477	3527	3577	3627	3677	3727	3777	3827	3877	3927	3977
A	200	50	100	150	200	50	100	150	200	50	100	150	200	50	100	150	200	50	100	150	200	50	100
M	12	13	13	13	13	14	14	14	14	15	15	15	15	16	16	16	16	17	17	17	17	18	18
N	28	30	30	30	30	32	32	32	32	34	34	34	34	36	36	36	36	38	38	38	38	40	40
P	2600	2650	2700	2750	2800	2850	2900	2950	3000	3050	3100	3150	3200	3250	3300	3350	3400	3450	3500	3550	3600	3650	3700
Weight (kg)	85.2	86.4	87.6	88.8	90.0	91.2	92.4	93.6	94.8	96.0	97.2	98.4	99.6	100.8	102.0	103.2	104.4	105.6	106.8	108.0	109.2	110.4	111.6

\* Refer to page 227 for the list of motor mounting part dimensions and attachments.

### Motor mounting part



Mounted motor specification	A	B	C	Motor mounting bolt
M 750 W	M6	ø90	ø19	4-M6 × L20
Y 750 W	M6	ø90	ø19	4-M6 × L20
P 750 W	M5	ø90	ø19	4-M5 × L20

### List of attachments

#### [Motor mounting parts]

Mounted motor specification	Timing belt, pulley	Motor Size	Motor mounting bolt	
			Size	Quantity
M	Included at shipment	750 W	M6	4
Y			M6	4
P			M5	4

#### [Origin sensor, limit sensor]

Manufacturer	Model	Quantity
OMRON Corporation	EE-SX672	3

\* Refer to page 236 for sensor specifications.

### MEMO

EBS

EBR

ETS

ECS

ETV

ECV

EKS

Safety  
precautions