

# Fine flow rate adjusting valve

The flow rate adjustment part and valve opening/closing function part are separated, achieving stable fine flow rate adjustment



## Specifications

Descriptions	LYX-0961-*, LYX-0965-*
Working fluid	Chemical liquid, pure water (*1)
Fluid temperature °C	5 to 60
Proof pressure MPa	0.6
Working pressure MPa	0 to 0.3
Ambient temperature °C	0 to 60
Mounting orientation	Unrestricted

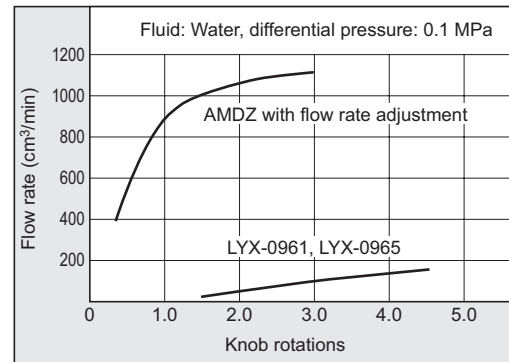
\*1: Cannot be used for oxidizing fluids.

Check the compatibility of product structural materials, working fluids and atmosphere.

\*2: Refer to AMDZ on page 22 for specifications of the air operated valve.

## Flow characteristics/pressure characteristics

### Flow characteristics comparison



## How to order

LYX - **0961** - **6BUS** - **1**

A Type

B Connection

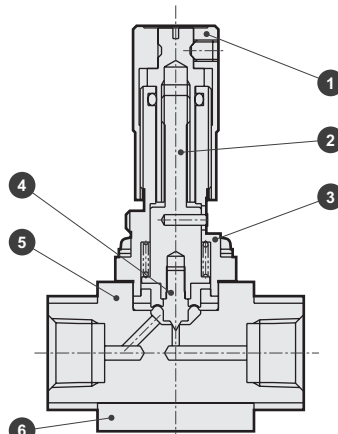
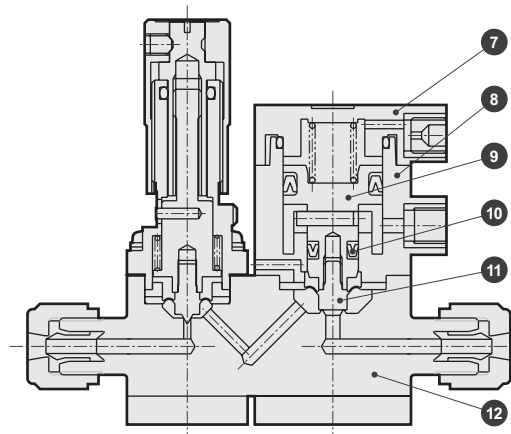
C Actuation  
(Select only for LYX-0961)

A Type		
<b>0961</b>	Air operated valve integrated	
<b>0965</b>	Fine flow rate adjusting valve only (no valve closing function)	
B Connection		
<b>6</b>	Rc1/8	
<b>3US</b>	Super Pillar integrated fitting	ø3 x ø2 tube connection
<b>6BUS</b>	Super Pillar integrated fitting	1.8" x 0.086" tube connection
<b>3UP</b>	Super 300 Pillar fitting	ø3 x ø2 tube connection
<b>6BUP</b>	P Series	1.8" x 0.086" tube connection
<b>3UF</b>	F-LOCK 20 Series integrated fitting	ø3 x ø2 tube connection
<b>3UR</b>	F-LOCK 60 Series integrated fitting	ø3 x ø2 tube connection
<b>6BUR</b>	F-LOCK 60 Series integrated fitting	1/8" x 1/16" tube connection
C Actuation		
<b>1</b>	NC (normally closed)	
<b>2</b>	NO (normally open)	
<b>3</b>	Double acting	

## Internal structure and parts list

● LYX-0961

● LYX-0965



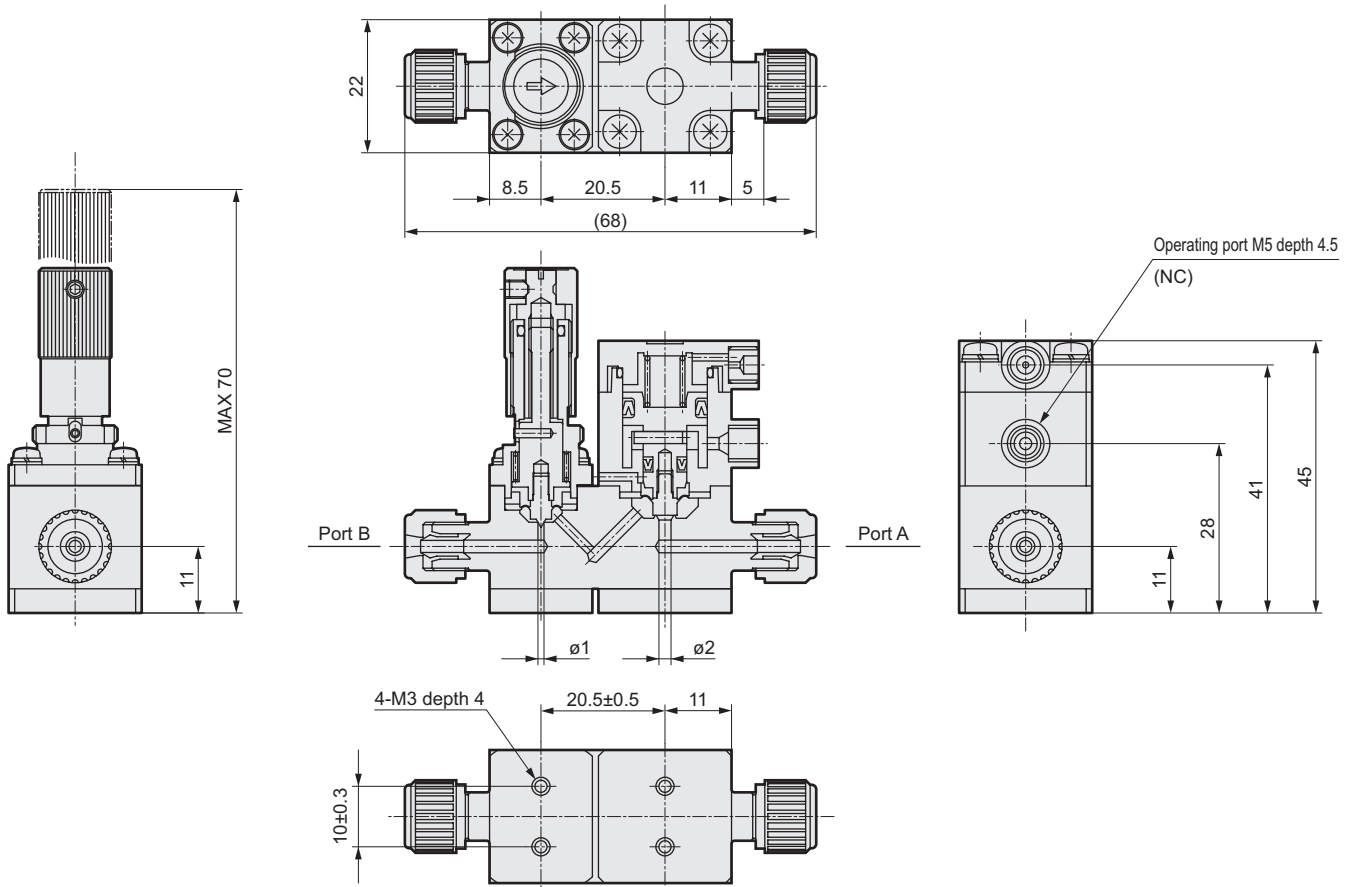
No.	Part name	Material
1	Adjusting knob	A5056
2	Lower rod	SUS304
3	Needle cover	SUS304
4	Diaphragm	PTFE
5	Body	PTFE
6	Mounting plate	SUS304
7	Cover	PPS
8	Cylinder	PPS
9	Piston rod	SUS303
10	Y packing	NBR
11	Diaphragm	PTFE
12	Body	PTFE

The material and structure may vary depending on the model number. Contact CKD for details.

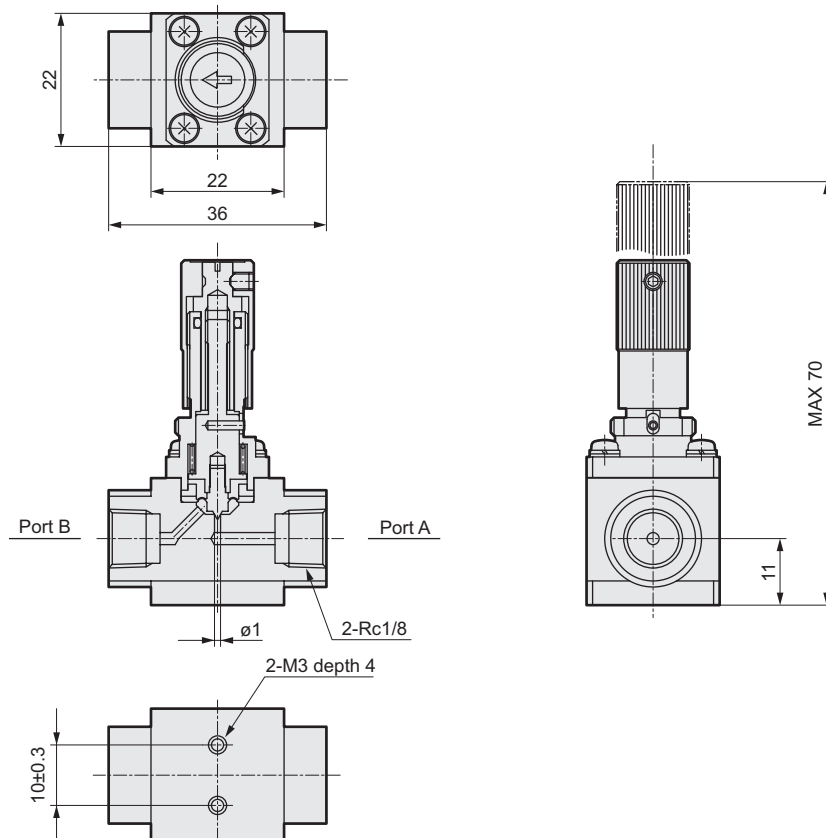
⚠ Always read the precautions on Intro Pages 7 to 16 before use.

Dimensions

● LYX-0961-6BUS-1



● LYX-0965-6



AMDZ 3R
AMD0 3R
AMD 3R
AMDZ
AMD0 2
AMD 2
AMD 3/2
AMD 3/2 SUS 304
AMD 3/2 SUS 304
AMD 1-H
AMD 1-M
AMGZ03R
AMG03R
AMG03R
AMG00
AMGZ0
AMG-02
GAMDZ 3R
GAMD0 3R
GAMD 3R
GAMD0 2A
GAMD 2
High pressure specification
AMD
Flow characteristics
MMD-02
MMD-0H
MMD-0M
GMMD-02
MMD-0
TMD-02
FMD00
NNV
AMS
AMDS
Fine regulator
KMIL
Others
Related