



Manual valve for process gas

OGD₂0R Series

- Metal diaphragm
- 90° rotation snap action

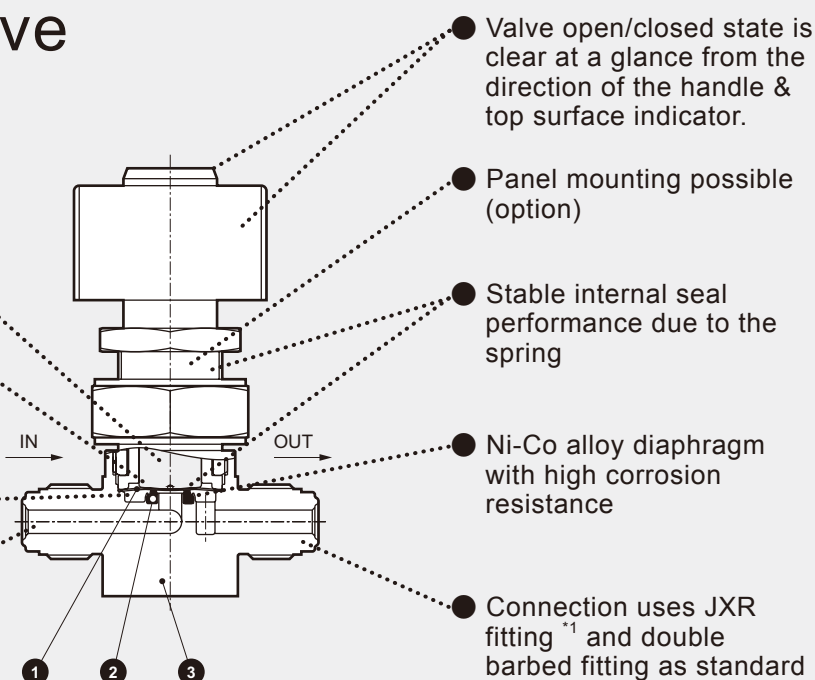


Model No.	Cv
OGD10R	Cv = 0.3

Model No.	Cv
OGD20R	Cv = 0.65

Just turn the handle to close the valve

- It can be used continuously at 80°C
- Stable internal seal performance due to the non-rotating rod structure
- Zero particle generation is achieved with optimal seal structure and improved surface roughness
- Reduced valving element dead space to the limit
- Electrolytic polishing specification



Gas contact part materials

No.	Part name	Material
①	Diaphragm	Ni-Co alloy
②	Valve seat	PCTFE
③	Body	SUS316L

*1: JXR fitting can be connected to VCR fitting.

Specifications

Descriptions	OGD10R	OGD20R
Working fluid	Inert gas/process gas	
Working pressure Pa(abs)-MPa(G)	1.3 x 10 ⁻⁶ to 0.99	
Fluid temperature °C	5 to 80	
Operating ambient temperature °C	5 to 80	
Storage ambient temperature °C	-10 to 80	
Valve seat leakage Pa·m ³ /s (He)	1.0 x 10 ⁻¹⁰ or less	
External leakage Pa·m ³ /s (He)	2.8 x 10 ⁻¹² or less	
Cv (23°C, under pressurization)	0.3	0.65
Connection	1/4" JXR male fitting 1/4" JXR female fitting 1/4" double barbed fitting	3/8" JXR male fitting 3/8" JXR female fitting 3/8" double barbed fitting
Weight kg	0.29 *1	0.67 *1

*1: Values with OGD10R-4RM (1/4" JXR male fitting), OGD20R-6RM (3/8" JXR male fitting).

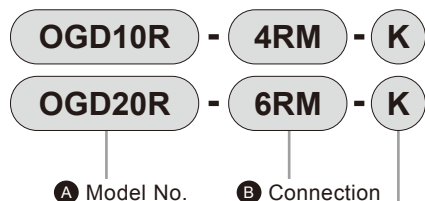
Safety precautions

Read the Safety Precautions on Intro Page 9 and pages 55 to 56 to ensure correct and safe use of the product.

OGD₂0R Series

How to order/Dimensions

How to order



		A Model No.	
		OGD10R	OGD20R
B Connection			
4RM	1/4" JXR male fitting	●	
4R	1/4" JXR female fitting	●	
4S	1/4" double barbed fitting	●	
6RM	3/8" JXR male fitting		●
6R	3/8" JXR female fitting		●
6S	3/8" double barbed fitting		●
C Handle color			
K	Black	●	●
R	Red	●	●
B	Blue	●	●
Y	Yellow	●	●

Handle color

- Black (-K) ● Red (-R)



- Blue (-B) ● Yellow (-Y)

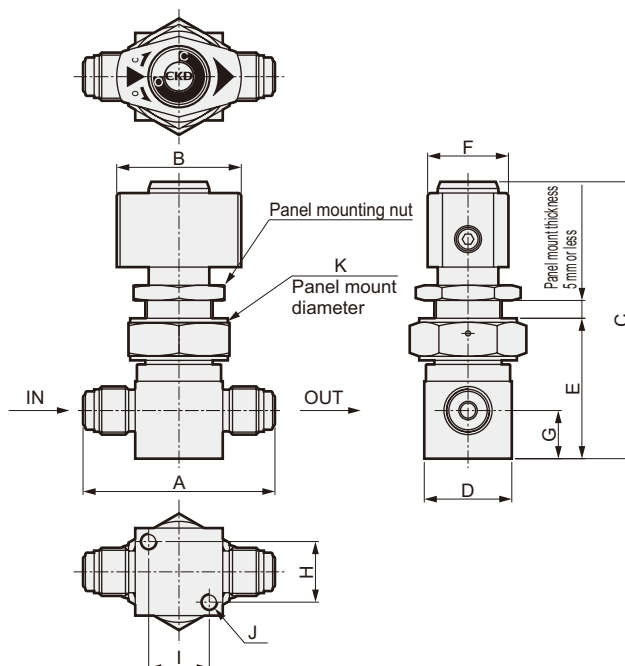
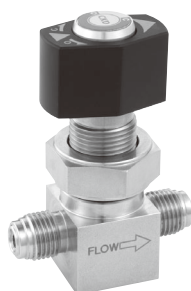


Dimensions

OGD10R-4RM-□

OGD20R-6RM-□

- JXR male fitting



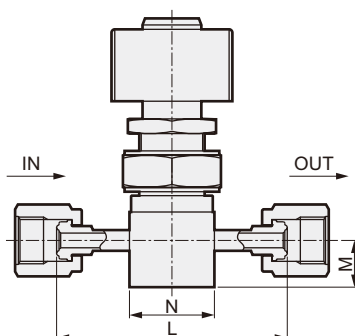
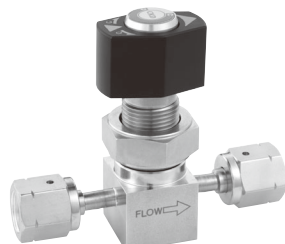
Model No. \ Code	A	B	C	D	E	F	G	H	I	J	K
OGD10R-4RM-□	57	37	82	□26	42	24	14.3	18	18	2-M5 depth 6	ø20.5
OGD20R-6RM-□	76	47	104	□34	57	28	16	20.2	20.2	2-M5 depth 8	ø26.5

Note: Nuts for panel mounting are not included with standard products. Products with nut for panel mounting are custom orders.

OGD10R-4R-□

OGD20R-6R-□

- JXR female fitting

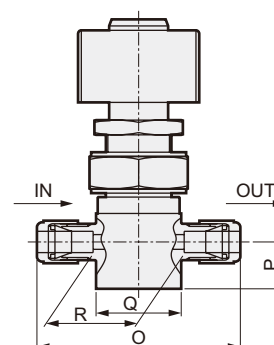


Model No. \ Code	L	M	N
OGD10R-4R-□	70.6	14.3	□26
OGD20R-6R-□	83	16	□34

OGD10R-4S-□

OGD20R-6S-□

- Double barbed fitting



Model No. \ Code	O	P	Q	R
OGD10R-4S-□	62	14.3	□26	27.8
OGD20R-6S-□	80	16	□34	44.3