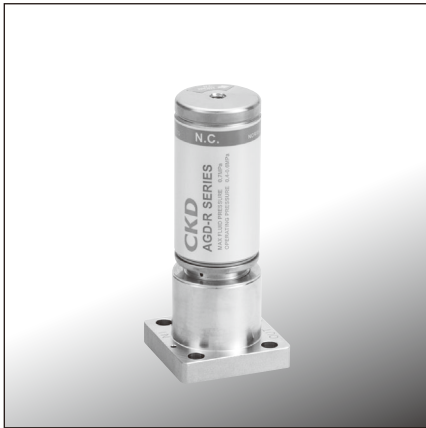


### MAGD Series is back with a new eco-friendly design!

\* Refer to page 82 for conventional products.



### Specifications

Descriptions		MAGD4-R-0	MAGD4-R-1
Working fluid		Inert gas/process gas	
Working pressure Pa (abs) to MPa (G)		1.3 x 10 <sup>-6</sup> to 0.99	1.3 x 10 <sup>-6</sup> to 0.7
Operating temperature °C		-10 to 80	
Ambient temperature °C		-10 to 80	
Valve seat leakage Pa·m <sup>3</sup> /s.He		1.3 x 10 <sup>-6</sup> or less	1.0 x 10 <sup>-10</sup> or less
External leakage Pa·m <sup>3</sup> /s.He		2.8 x 10 <sup>-12</sup> or less	
Cv (23°C, under pressurization)		0.1	0.26
Connection		1.5", W seal (nominal 6.35)	
Operating pressure	MPa	NC	0.4 to 0.6
		NO	0.4 to 0.5
Operating port		M5	
Material	Body	SUS316L	
	Diaphragm	Ni-Co alloy	
	Seat	PCTFE	

### How to order

**MAGD4 - R - 02A - W - 1 2**

**A** Series

**B** Valve shape

**C** Seal shape

**D** Actuation (V1)

**E** Actuation (V2)

Code	Content	
<b>A Series</b>		
<b>MAGD4</b>	Air operated valve for IAGD4	
<b>B Valve shape</b>		
		<b>Cv</b>
<b>01D</b>	1-station block D valve (2-port)	0.1
<b>01X</b>	1-station block X valve (3-port)	
<b>01Y</b>	1-station block Y valve (3-port)	
<b>02A</b>	2-station block A valve (3-port)	
<b>11D</b>	1-station block D valve (2-port)	0.26
<b>C Seal shape</b>		
<b>W</b>	W seal (nominal 6.35)	
<b>D Actuation (V1)</b>		
<b>1</b>	NC	
<b>2</b>	NO	
<b>3</b>	NC (with proximity sensor (normally closed valve))	
<b>4</b>	NO (with proximity sensor (normally open valve))	
<b>5</b>	NC (with proximity sensor (normally open valve))	
<b>6</b>	NO (with proximity sensor (normally closed valve))	
<b>E Actuation (V2)</b>		
<b>1</b>	NC	
<b>2</b>	NO	
<b>3</b>	NC (with proximity sensor (normally closed valve))	
<b>4</b>	NO (with proximity sensor (normally open valve))	
<b>5</b>	NC (with proximity sensor (normally open valve))	
<b>6</b>	NO (with proximity sensor (normally closed valve))	

[Example of model No.]

**MAGD4-R-02A-W-12**

- A** Series : Air operated valve for IAGD4
- B** Valve shape : 2-station block A valve (3-port)
- C** Seal shape : W seal (nominal 6.35)
- D** Actuation (V1) : NC
- E** Actuation (V2) : NO

\*1: Mounting bolt, gasket and air fitting for actuator drive are not attached with the product and must be purchased separately.

\*2: Contact CKD for products with mounting bolts.

# MAGD4 Series

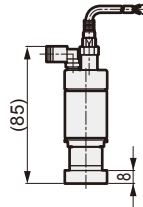
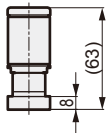
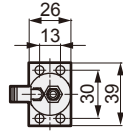
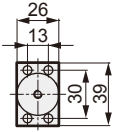
## Dimensions

## Dimensions

### 1-station block

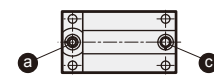
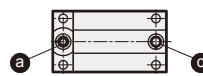
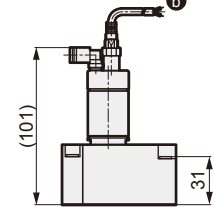
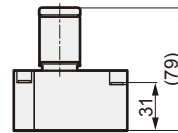
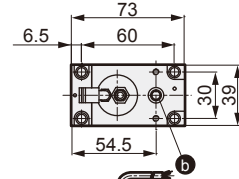
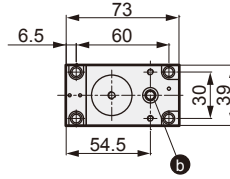
#### ● MAGD4-R-01D

(with proximity sensor)



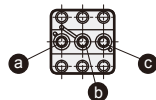
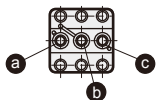
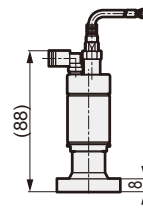
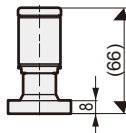
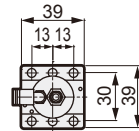
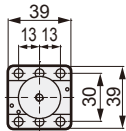
#### ● MAGD4-R-01X

(with proximity sensor)



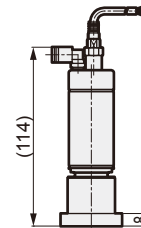
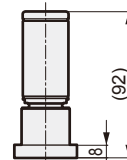
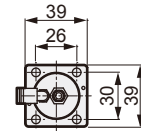
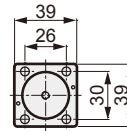
#### ● MAGD4-R-01Y

(with proximity sensor)



#### ● MAGD4-R-11D

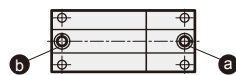
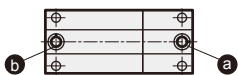
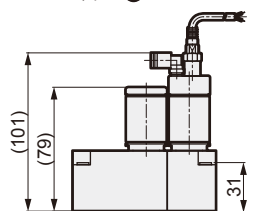
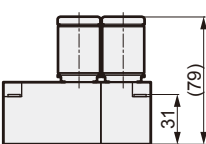
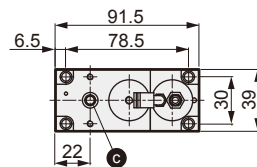
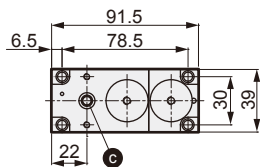
(with proximity sensor)



### 2-station block

#### ● MAGD4-R-02A

(with proximity sensor)



### Specifications



Descriptions		MOGD4-01	MOGD4-11
Working fluid		Inert gas/process gas	
Working pressure Pa(abs)-MPa(G)		1.3 x 10 <sup>-6</sup> to 0.7	
Fluid temperature °C		-10 to 80	
Ambient temperature °C		-10 to 80	
Valve seat leakage Pa·m <sup>3</sup> /s (He)		1.3 x 10 <sup>-9</sup>	
External leakage Pa·m <sup>3</sup> /s (He)		2.8 x 10 <sup>-12</sup>	
Cv		0.1	0.26
Connection		W seal (nominal 6.35)	
Material	Body	SUS316L	
	Diaphragm	Ni-Co alloy	
	Seat	PCTFE	

### How to order

MOGD4 - 11D - W - K A - S1

A Series

B Valve shape

C Seal shape

D Handle color

E Others

Code	Content	
<b>A Series</b>		
MOGD4	Manual valve for IAGD4	
<b>B Valve shape</b>		<b>Cv</b>
11D	1-station block D valve (2-port)	0.26
01X	1-station block X valve (3-port)	0.1
<b>C Seal shape</b>		
W	W seal (nominal 6.35)	
<b>D Handle color</b>		
K	Handle color: Black	
R	Handle color: Red	
B	Handle color: Blue	
Y	Handle color: Yellow	
G	Handle color: Green	
<b>E Others</b>		
S1	With handle lock (only when valve is closed)	
Blank	Without key	

\*1: Mounting bolt and gasket are not attached with the product and must be purchased separately.

\*2: Contact CKD for products with mounting bolts.

[Example of model No.]

**MOGD4-11D-W-KA-S1**

- A Series : Manual valve for IAGD4
- B Valve shape : 1-station block D valve (2-port)
- C Seal shape : W seal (nominal 6.35)
- D Handle color : Black
- E Other : With handle lock (only when valve is closed)

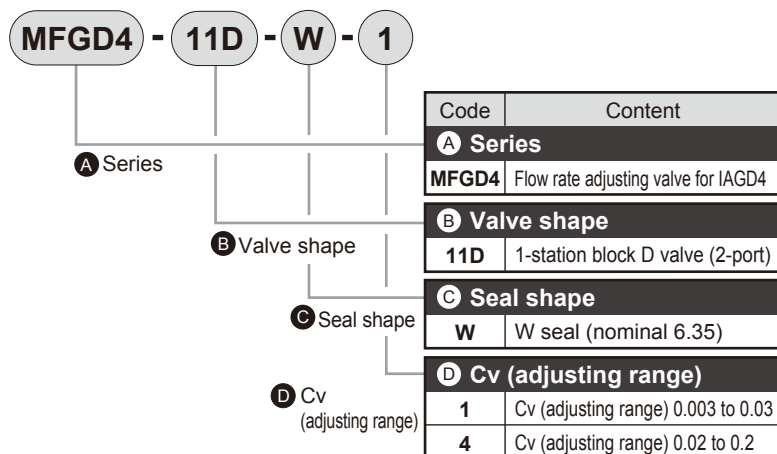
### Specifications



Descriptions	MFGD4-11D-W-1	MFGD4-11D-W-4
Working fluid	Inert gas/process gas	
Working pressure Pa(abs)-MPa(G)	1.3 x 10 <sup>-6</sup> to 0.7	
Fluid temperature °C	-10 to 80	
Ambient temperature °C	-10 to 80	
Valve seat leakage	1/100 or less of max. Cv	
External leakage Pa·m <sup>3</sup> /s (He)	2.8 x 10 <sup>-12</sup>	
Cv (adjusting range)	0.003 to 0.03	0.02 to 0.2
Connection	W seal (nominal 6.35)	
Material	Body	SUS316L
	Diaphragm	Ni-Co alloy

\* Cover is included with the product.

### How to order



\*1: Mounting bolt and gasket are not attached with the product and must be purchased separately.  
 \*2: Contact CKD for products with mounting bolts.

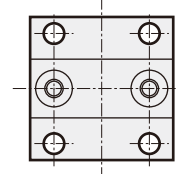
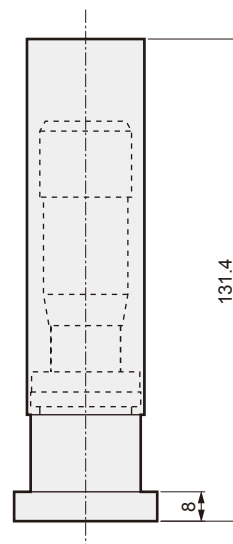
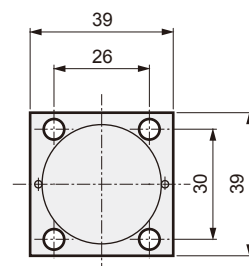
[Example of model No.]

**MFGD4-11D-W-1**

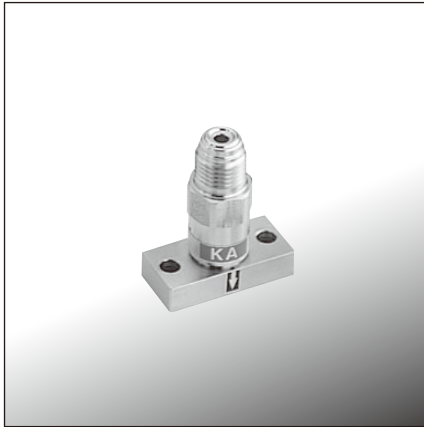
- A Series** : Flow rate adjusting valve for IAGD4
- B Valve shape** : 1-station block D valve (2-port)
- C Seal shape** : W seal (nominal 6.35)
- D Other** : Cv (adjusting range) 0.003 to 0.03

### Dimensions

● MFGD4

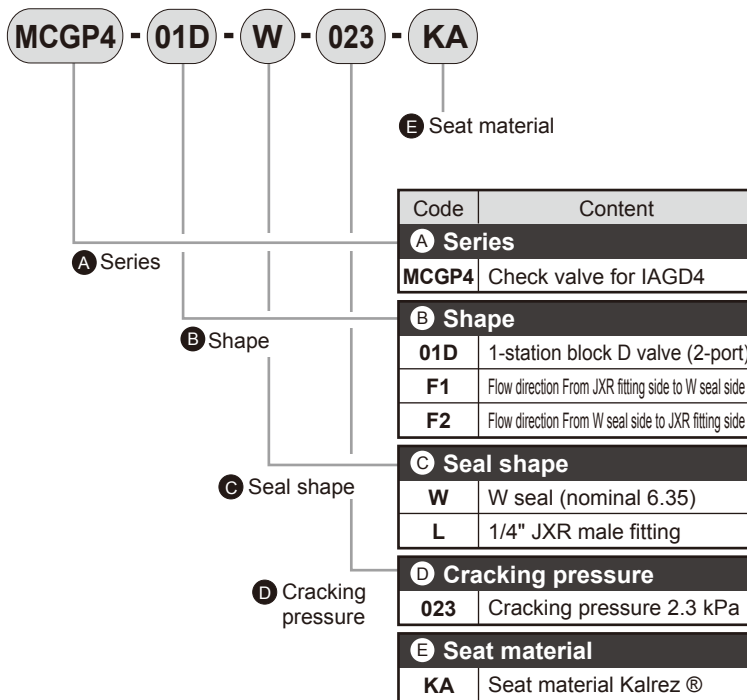


### Specifications



Descriptions		MCGP4-01D	MCGP4-F
Working fluid		Inert gas/process gas	
Working pressure Pa(abs)-MPa(G)		1.3 x 10 <sup>-6</sup> to 0.7	
Fluid temperature °C		-10 to 80	
Ambient temperature °C		-10 to 80	
Valve seat leakage Pa·m <sup>3</sup> /s (He)		4.7 x 10 <sup>-8</sup>	
External leakage Pa·m <sup>3</sup> /s (He)		2.8 x 10 <sup>-12</sup>	
Cv (max.)		0.25	
Connection		W seal (nominal 6.35)	
Material	Body	SUS316L	
	Seat	Kalrez®	
	Spring	SUS316-WPA	
	Gasket	PTFE	

### How to order



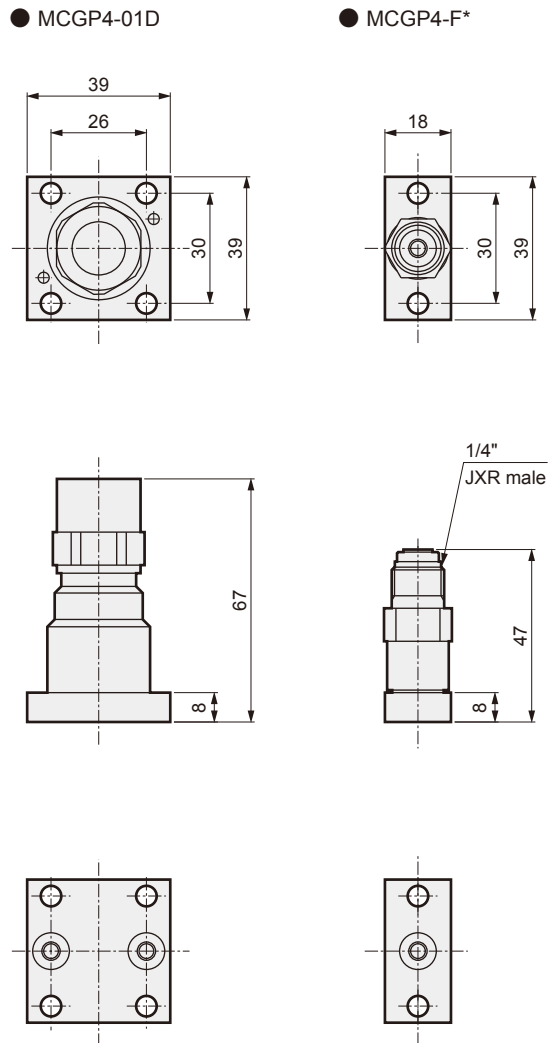
\*1: Mounting bolt and gasket are not attached with the product and must be purchased separately.  
 \*2: Contact CKD for products with mounting bolts.

[Example of model No.]

**MCGP4-01D-W-023-KA**

- A Series** : Check valve for IAGD4
- B Shape** : 1-station block D valve (2-port)
- C Seal shape** : W seal (nominal 6.35)
- D Cracking pressure** : 2.3 kPa
- E Seat material** : Kalrez®

### Dimensions



Kalrez® is a registered trademark of DuPont Corporation.

## Gasket

Name	Model No.
W seal gasket (nominal 6.35)	IAGD4-UGF-6.35GR



## Mounting bolt for W seal



Name	Model No.	Applicable parts
Hexagon socket head cap screw for W seal (M5 x 12, 4 pcs)	IAGD4-BOLT-M5×12-4	MAGD4-01D MAGD4A-11D MOGD4-11D MFGD4-11D MCGP4-01D MCGP4-F* Bypass block (for interface pitch 26 mm) Bypass piping block (for MFC interface pitch 79.8 mm) Sealing flange SEC-G111*-W-1.5 (MFC manufactured by STEC)
Hexagon socket head cap screw for W seal (M5 x 35, 4 pcs)	IAGD4-BOLT-M5×35-4	MAGD4-01X MAGD4-02A MOGD4-01X FC-785 (MFC manufactured by Hitachi Metals) FC-786 (MFC manufactured by Hitachi Metals) FC-985 (MFC manufactured by Hitachi Metals)
Hexagon socket head cap screw for W seal (M5 x 40, 4 pcs)	IAGD4-BOLT-M5×40-4	SEC-7330*-800A (MFC manufactured by STEC) SEC-7340*-800A (MFC manufactured by STEC) SEC-F730*-800A (MFC manufactured by STEC) SEC-F740*-800A (MFC manufactured by STEC)
Hexagon socket head cap screw for W seal (M5 x 43, 4 pcs)	IAGD4-BOLT-M5×43-4	SEC-7350*-800A (MFC manufactured by STEC) SEC-F750*-800A (MFC manufactured by STEC) FC-986 (MFC manufactured by Hitachi Metals)

Contact CKD for details of applicable parts.

## Maintenance tools (Torque screwdriver, bit for torque screwdriver, tweezers (gasket installation tool) 1 each)

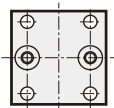
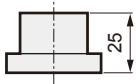
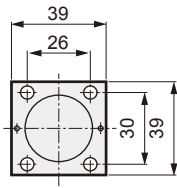
Name	Model No.
Maintenance tool set	IAGD4-MAINTENANCE

Refer to the instruction manual for details of use.

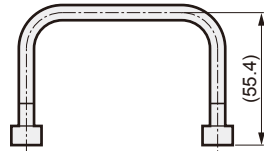
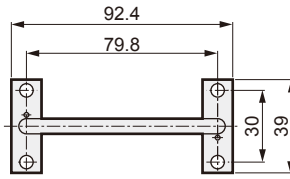


## Top mount block

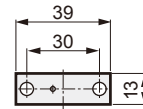
- Bypass block  
(for 26 mm pitch between)



- Bypass piping block  
(for 79.8 mm pitch between MFC)

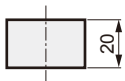
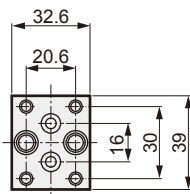


- Sealing flange

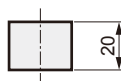
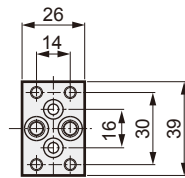


## Base block

- Base block 1  
(20.6 mm between)



- Base block 5  
(14.0 mm between)



- 1/4" JXR male flange

