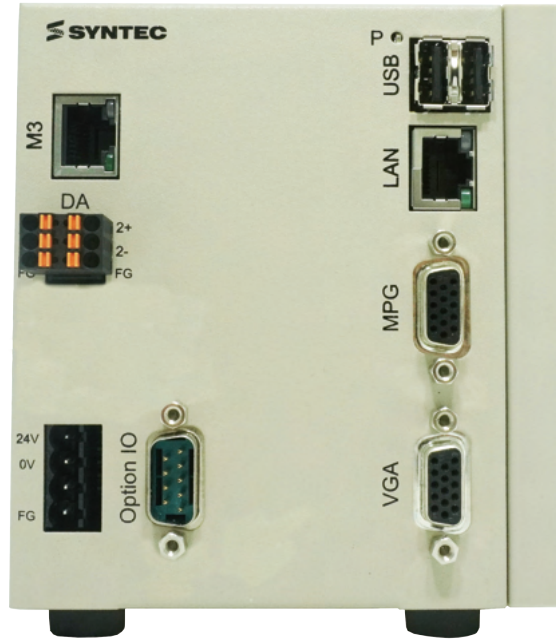


 Specification

# Laser Cutting Solution



System	710CA
Monitor	VGA
USB	2
Network	10/100 Mbps
Communication Protocol	RS485, Modbus TCP, Ethernet IP
Servo Control	MECHATROLINK-III/EtherCAT
Control Axes	Standard 5 axes(max.18 Axes)
External Interface	RJ-45, USB, DSUB, MPG
I/O bit	Up to 4096 points
Input Voltage	DC24V 1A

## TAIWAN

### Taiwan (Hsinchu)

SYNTEC Technology Co., Ltd  
ADD : No.25, Yanfa 2nd Rd., East Dist.,  
Hsinchu City 300, Taiwan (R.O.C.)  
TEL : +886-3-6663553  
FAX : +886-3-6663505  
EMAIL : sales@syntecclub.com.tw

### Taichung

SUN-CNC Co., Ltd  
ADD : No. 22, Lane 428, Section 1, Fengyuan  
Boulevard, Fengyuan District,  
Taichung City, Taiwan (R.O.C.)  
TEL : +886-4-26337731  
TAX : +886-4-25349224

### TANLU-CNC Co., Ltd

ADD : No. 42, Jingming Road, Xitun District,  
Taichung City, Taiwan (R.O.C.)  
TEL : +886-4-23102626  
TAX : +886-4-23102636

### Tainan

ADD : No. 218, Danan Road, Rende District,  
Tainan City, Taiwan (R.O.C.)  
TEL : +886-6-2796707  
TAX : +886-6-2796705

## AROUND THE WORLD

### Malaysia

ADD : 43, Ground Floor, Jalan Tpp1/1, Taman  
Perindustrian Puchong, 47100, Selangor Darul Ehsan.  
TEL : +603-61577632  
EMAIL : otis.siah@syntecclub.com.tw;  
yeneam.teoh@syntecclub.com.tw

### Thailand

ADD : 78/38 Kheha Romklao Rd., Khlong Song Ton Nun,  
Lat Krabang Bangkok, 10520  
TEL : +662-006-5738  
EMAIL : thanawat@syntecclub.com.tw

### Vietnam

ADD : 3F, No. 36, A4 Street, Ward 12, Tan Binh District,  
Ho Chi Minh City, Viet Nam  
TEL : +8493832829  
FAX : +842822535556  
EMAIL : andyngo@vmsyntec.com.vn

### Turkey

ADD : Küçükbakkalkoy Mah. Vedat Günyol Cd. Defne Sok.  
No:1 D:1502 Flora Residence,34750 Atasehir/Istanbul, Türkiye  
TEL : +90-216-2662475  
EMAIL : daisy.cheng@syntecclub.com.tw

### USA (South California)

ADD : 766 Pinefalls Ave.Walnut,CA 91789  
TEL : +1909-551-0187  
EMAIL : info@syntecamerica.com

### Indonesia

PT. OTOMASI BERSAMA INDONESIA  
ADD : Ruko Arcadia Mataram Blok B, No 15, Kelurahan  
Cibatu, Kecamatan Cikarang selatan, 17530, Indonesia  
TEL : +6221 2210 4832  
EMAIL : yulius@otomasi.co

### India (Distributor)

Luna Technologies Pvt. Ltd.  
ADD : W-200, TTC Industrial Estate, Khairme,  
Thane Belapur Road, Navi Mumbai -400708  
TEL : +91-22-61766110  
E-mail : sales@lunabearings.com

## CHINA

### Jiangsu

#### SYNTEC Equipment CO.,Ltd.

ADD : Building B, Kejiyuan, Xindai, No. 9, Chunhui Road,  
Suzhou Industrial Park  
TEL : 0512-69008860  
FAX : 0512-65246029

#### Jiangsu-Suzhou

Suzhou Huaxin Numerical Control Technology  
Development Co., Ltd.  
ADD : Building A, Kejiyuan, Xindai, No. 9, Chunhui Road,  
Suzhou City Industrial Park  
TEL : 0512-69008890  
FAX : 0512-69560818

#### Nantong

Suzhou New Generation CNC Equipment Co., Ltd.  
Nantong Branch (NTST)  
ADD : Building A, Kejiyuan, Xindai, No. 9, Chunhui Road,  
Suzhou City Industrial Park  
TEL : 0513-89077025

#### Jiangsu-Nanjing

The Suzhou new generation of CNC Equipment  
Co., Ltd. Chongqing Branch  
ADD : Room 104, Unit 2, Building 6, Jiulonghu Villa, No. 188,  
Qingshuiing West Road, Jiangning District, Nanjing City  
TEL : 025-52717710  
FAX : 025-52717702

#### Anhui Hefei

Suzhou new generation numerical control  
equipment Co., Ltd. Hefei branch  
ADD : Hefei Binhu Baoha District Century City  
Fu Hui Yuan T4-2202map  
TEL : 0551-63814183

### Shaanxi

#### Shaanxi Xi'an

The Suzhou new generation of CNC Equipment  
Co., Ltd. Xi'an Branch  
ADD : Room 11328, Unit 1, Building 4, Duhui, I, Yicuiyuan,  
No. 10, Tangyan South Road, Gaoxin District, Xian City  
TEL : 029-89274293  
FAX : 029-88287423

#### Wuxi

Suzhou Huaxin CNC Technology Development  
Co., Ltd. Wuxi Office  
ADD : B906, Yuye Network Building, No. 68, Tansuo Road,  
Huishan District, Wuxi  
TEL : 15295664580

### Guangdong

#### Suzhou SYNTEC Equipment Co.,Ltd. Guangdong

Branch  
ADD : 2F, Building 6, Dongguan-Taiwan Biotechnology  
Incubation Center, No.1, Taiwan High-Tech Park, Songshan  
Lake  
TEL : 0769-22249073  
FAX : 0769-22210012

#### Guangdong Dongguan

Suzhou SYNTEC Equipment Co.,Ltd. Dongguan  
Branch Co., Ltd. Chongqing Branch  
ADD : Zone B, 3F, Building 1, No.522,  
Chain-An East Rd., Changan Townmap  
TEL : 0769-81660318  
FAX : 0769-81660328

#### Guangdong Guangzhou

Suzhou SYNTEC Equipment Co.,Ltd. Guangzhou  
Branch  
ADD : 2T404, Zhiqi, No. 8, Luojia Village Section, Fuji Road,  
Dalong Street, Panyu District, Guangzhou City  
TEL : 020-34583040  
FAX : 020-34583220

#### Changping

The Suzhou new generation of CNC Equipment  
Co., Ltd. Chongqing Branch  
ADD : Floor 5, Huliang Building, No. 8, Qianyi Road, Banshi  
Village, Changping Town, Dongwan City  
TEL : 0769-82826802  
FAX : 0769-82826820

#### Shenzhen

Shenzhen branch  
ADD : 5F, Building C, Sunshine Technology Park, Gin-Long  
2nd Rd., Baolong Industrial Zone, Shenzhen Longgang District  
TEL : 0755-84320380  
FAX : 0755-84559490

#### Jiangmen

Suzhou New Generation CNC Equipment Co., Ltd.  
Jiangmen Branch (JMST)  
ADD : Room 02, Floor 7, Huoju Building, Gaoxin District, No.  
288, Jinou Road, Jianghai District, Jiangmen City,Guangdong  
Province  
FAX : 0750-3771824

#### Changzhou

Syntec Technology (Suzhou) Co., Ltd. Nanjing  
Branch Changzhou Office  
ADD : Room 2217, Yatai Fortune Center, No. 1, Huayuan  
Street, Hutang Town, Wujin District, Changzhou City  
TEL : 18168828572

### Xiamen

#### Suzhou SYNTEC Equipment Co.,Ltd. Xiamen

Branch  
ADD : No.100.B Chuang Chang Fang 3F East Jin Fu Road,  
Tong An District,Xiamen City, Fujian Province, China  
TEL : +86-592-7191901  
FAX : +86-592-7220536

### Zhejiang

#### Zhejiang Hangzhou

Suzhou SYNTEC Equipment Co.,Ltd. Hangzhou  
Branch  
ADD : Room1202 Unit2 Building1, Edifice DiKai, Jincheng  
Road, Beigan Street,Xiaoshan District, HangzhouCity,Zhejiang  
Province, China  
TEL : 0571-82751187  
FAX : 0571-82751186

#### Zhejiang Ningbo

Suzhou SYNTEC Equipment Co.,Ltd. Ningbo  
Branch  
ADD : Room 12-07, No.262.416 Alley, Zhaohui Road,  
Jiangdong District, Ningbo City,  
TEL : 0574-87750305  
FAX : 0574-87750306

#### Zhejiang Wenling

The Suzhou new generation of CNC Equipment  
Co., Ltd. Wenling Branch  
ADD : Room 1206, Department A, Zhenxing Plaza, Taiping  
Subdistrict, Wenling Citymap  
TEL : 0576-86138372  
FAX : 0576-86119106

### Luoyang

#### Henan Luoyang

The Suzhou new generation of CNC Equipment  
Co., Ltd. Luoyang Company  
ADD : 1-1-704, Runsheng Building, Cross of Sanshan Road  
and-Heluo Road, Hi-and-New Tech Park of Luoyang  
TEL : 0379-65110352  
FAX : 0379-65110352

#### Xuzhou

Syntec Technology (Suzhou) Co., Ltd. Xuzhou  
Branch  
ADD : Room -1503, Linghaibangonglounan, No. 66, Kunpeng  
Road, Jingji Development Area, Xuzhou City, Jiangsu Province  
TEL : 13656201020

### Chongqing

#### Suzhou New Generation CNC Equipment Co., Ltd.

Chongqing Branch (CQST)  
ADD : Block B, Dongli International, 11-6, Building 2, No. 62,  
Taishan Boulevard East Section, Bu New District, Chongqing  
City  
TEL : 023-67913296  
FAX : 023-67634382

### Tianjin

#### The Suzhou new generation of CNC Equipment

Co., Ltd. Tianjin Branch  
ADD : No. 37, A District, Huayuan, Qiaorufeng, No. 7,  
Wuqian West Road, Xiqing District, Tianjin City  
TEL : 022-23739192-601  
FAX : 022-23738192

### Shandong

#### Shandong Jinan

Suzhou SYNTEC Equipment Co.,Ltd. Jinan  
Branch  
ADD : Flyover District of Ji nan three Bridge Street No. 28  
Luneng Cambridge 9 Building 3 unit 101 room  
TEL : 0531-85907208  
FAX : 0531-85907208

### Hubei

#### Hubei Wuhan

Suzhou new generation of CNC Equipment Co.,  
Ltd. Wuhan Branch  
ADD : Room 2003-2006, A Guanggongjiao, No.456,  
Luoyu East Road, Hongshan District, Wuhan, China  
TEL : 027-87638876  
FAX : 027-87204137

### Liaoning

#### Shenyang

Suzhou new generation of CNC Equipment Co.,  
Ltd. Wuhan Branch  
ADD : 22-1, C61-, Diyicheng, No. 1, 1Jia1, Qigong Street, Tiexi  
District, Shenyang City, Liaoning Province  
TEL : 18698806526

#### Jinan

Syntec Technology (Suzhou) Co., Ltd. Jinan  
Branch  
ADD : 502, Unit 3, Building 11, Kangqiao, Luneng, No. 28,  
Sankongqiao Street, Tianqiao District, Jinan  
TEL : 0531-85907208  
FAX : 0531-85907208

**SYNTEC**  
新代科技股份有限公司

SYNTEC Technology Co., Ltd.

No.25, Yanfa 2nd Rd., East Dist., Hsinchu City  
300, Taiwan (R.O.C.)

☎ 886-3-6663553

☎ 886-3-6663505

✉ sales@syntecclub.com.tw

Suzhou SYNTEC Equipment Co.,Ltd.

No. 9th, Chun Hui Road, Suzhou Industrial Park,  
Jiangsu Province

☎ 86-512-69008860

☎ 86-512-65246029

✉ service@syntecclub.com.cn



<http://www.syntecclub.com.tw>

Catalog NO. 202110V1

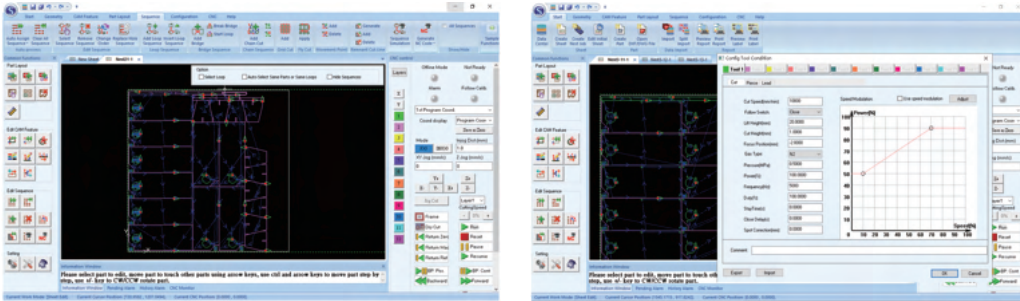


SYNTEC LASER  
CUTTING  
CONTROLLER

TRUSTED TECHNICAL SERVICE

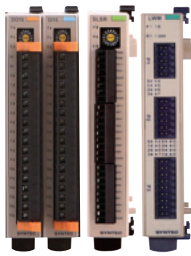
# Product structure

## CAD/CAM

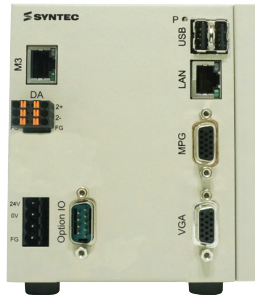


↕ USB or Network Cable

## Controller



Expansion Module



710CA



Wireless Handheld Box

↕ MECHATROLINK-III

## SYNTEC drive



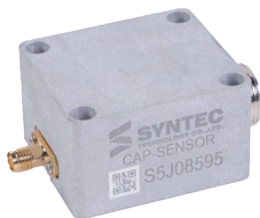
SYNTEC drive



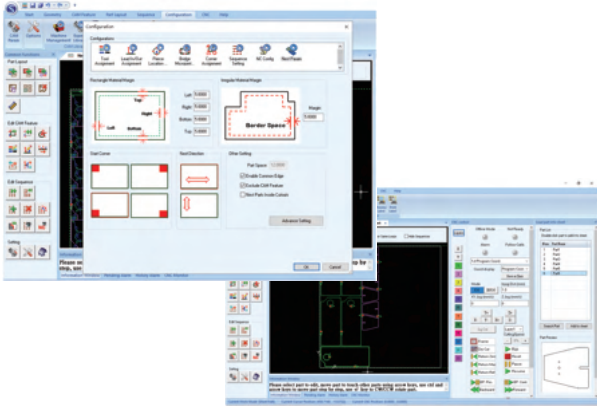
Servo motors

↕

## Capacitive Gap Control



# Software features

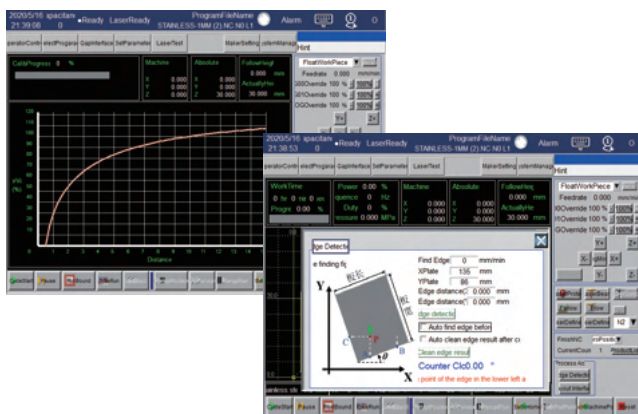
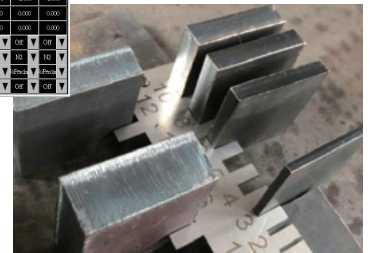


## Complete cutting CAD/CAM functions

- Provide drawing, editing, group management.
- Provide manual / automatic nesting, remaining material management.
- Provide manual / automatic path technology, fly cutting path, co-edge cutting path, import and export functions.

## Built-in laser process database

- Improve the quality of laser cutting process with built-in speed power modulation function.
- Provide process database, corresponding parameters can be called in real time according to different materials.
- Provide standard laser source control interface, compatible with mainstream laser brands.

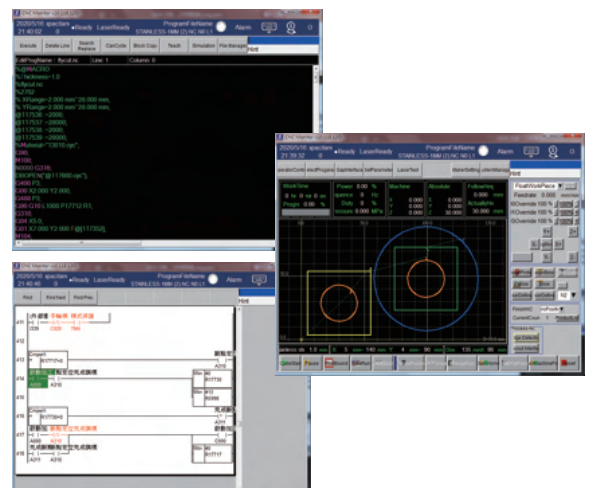


## Key industry features

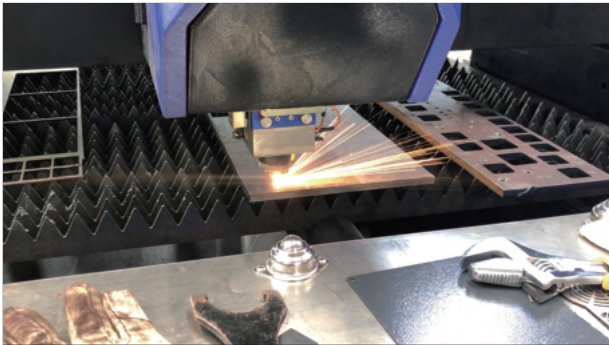
- Provide complete solutions such as high-speed cruising, one-key calibration, frog-leap lifting, fly cutting, co-edge cutting, intelligent workpiece edge detecting.

## Support customized development

- Provide secondary development tools to develop value-added functions without coding.
- Protect industry-specific process knowledge.
- In-depth customization for different customers.

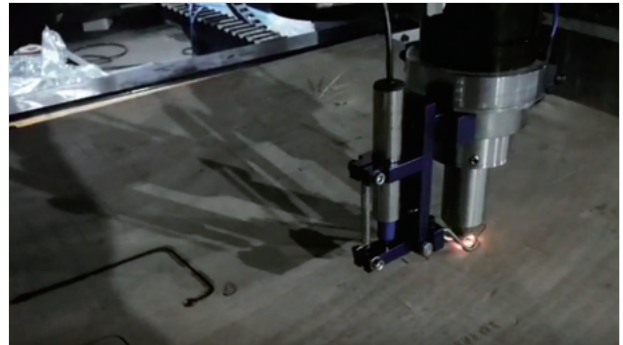


## = Applications



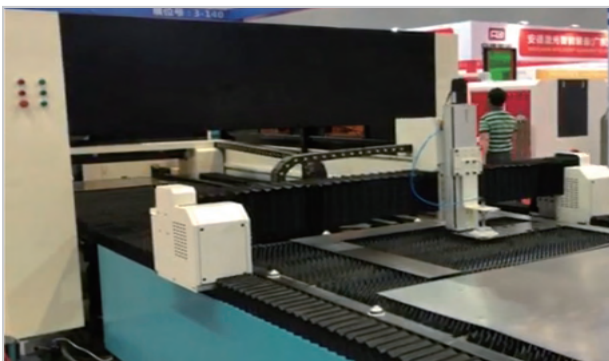
### 2D metal sheet cutting

SYNTEC laser cutting controller integrated the fiber laser control, motion control and capacitive gap control can achieve precise cutting process.



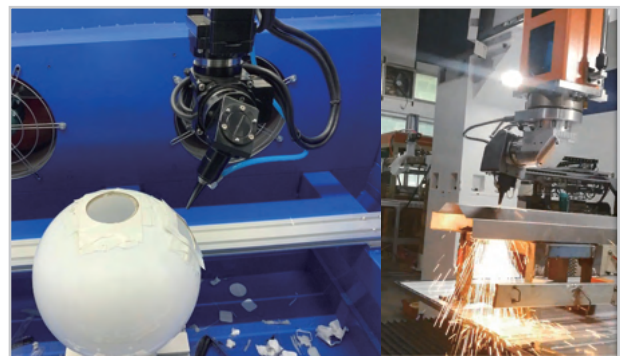
### 2D Non-metal sheet cutting

SYNTEC laser cutting controller also integrated the CO2 laser control, motion control and LVDT gap control can achieve the cutting process of non-metallic flat plates such as acrylic, wood and PCV boards.



### Various value-added functions

Support value-added functions such as cutting and marking compound, visual alignment, automatic loading and unloading, cloud management.



### Five-axis cutting

SYNTEC laser cutting controller also support the five-axis motion control. Integrating optional RTCP function with laser control to achieve complex process effect.