



— ProCompositeTech —



— ProCompositeTech —



[www.casadei-industria.com](http://www.casadei-industria.com)

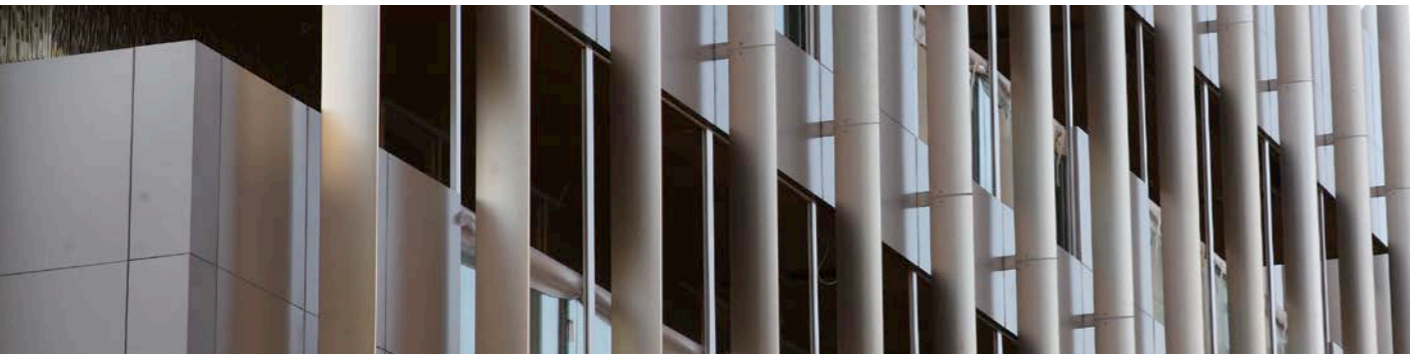
---

Casadei Industria ALU S.r.l.  
via Tane di Baragone, 11  
47899 Galazzano Serravalle  
Repubblica di San Marino  
Tel. +378 0549 900720

# Alu Folder

Manual folding machine for composite panels

Manual folding machine for composite panels for architectural façades, transport industry, Interior Design and Visual Communication



#### KIND OF PANELS

**ACM / ACP**  
PE CORE  
MINERAL CORE

- ALUCOBOND®
- LARSON®
- ALPOLIC®
- ARCONIC®
- ALUBOND®
- ALBOND®
- SIBALUX®
- VITRABOND®
- STACBOND®
- MULTIPANEL UK®
- .....

I AM THE ALU FOLDER

## MAIN ADVANTAGES OF THE MACHINE

- Bends the returning folds of the composite panels with aluminum skins ( ACM, ACP, MCM ) previously fabricated on a Panel Router, Alu Bender or a vertical panel saw



- Once the panel has been placed in position; the operator simply pushes down on the bar in one single motion. The pressure filled pistons makes this a one person operation.



- The locking and folding feet are completely adjustable and are made of plastic that will not mark or scratch the surface of the composite panel during the bending process, even when folding of all four sides.



- The large and accessible working surface is 100 percent true resulting in bends that are perfectly straight and completed in just a few seconds.



## ALU Folder

|30

Folding width 3000 mm - 118"

\* Maximum returning fold width 48 mm

Manual activation

Approx. Weight kg. 380 - Lb. 838

Dimensions L 324 cm x P 216 cm x H 115 cm  
L 128" X P 85" X H 45"

## ALU Folder

|40

Folding width 4000 mm - 157"

\* Maximum returning fold width 48 mm

Manual activation

Approx. Weight kg. 450 - Lb. 992

Dimensions L 424 cm x P 216 cm x H 115 cm  
L 167" X P 85" X H 45"

## ALU Folder

|50

Folding width 5000 mm - 197"

\* Maximum returning fold width 48 mm

Manual activation

Approx. Weight kg. 550 - Lb. 1212

Dimensions L 520 cm x P 216 cm x H 115 cm  
L 205" X P 85" X H 45"



\*When folding all four sides on a single panel, the maximum fold width is limited to 48 mm or 1.89 of an inch"