

# AIR CURTAIN

series

Easi-Gard

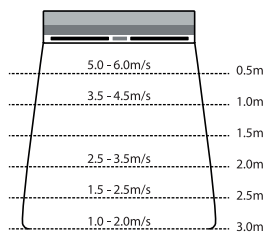




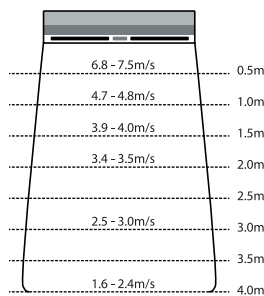
## Air Velocity Charts

ACA 308BP & ACA 408BP	ACA 310BP & ACA 410BP	ACA 312BP & ACA 412BP
-----------------------	-----------------------	-----------------------

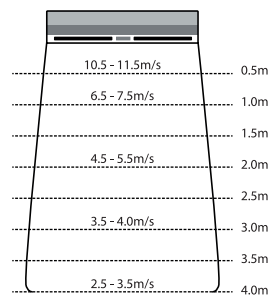
8ft Throw Air Curtain



10ft Throw Air Curtain

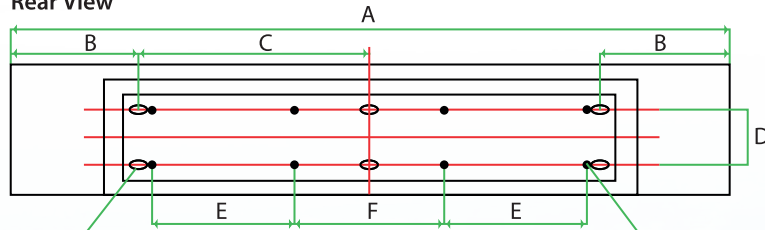


12ft Throw Air Curtain



## Installation Dimensions

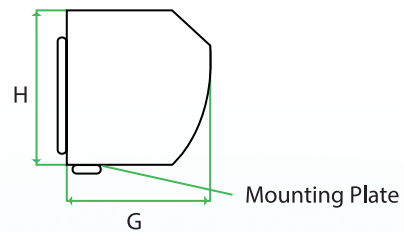
Rear View



6 mounting holes (8mm bolts are used)

8 mounting holes (8mm wood screw are used)

Cross Sectional View



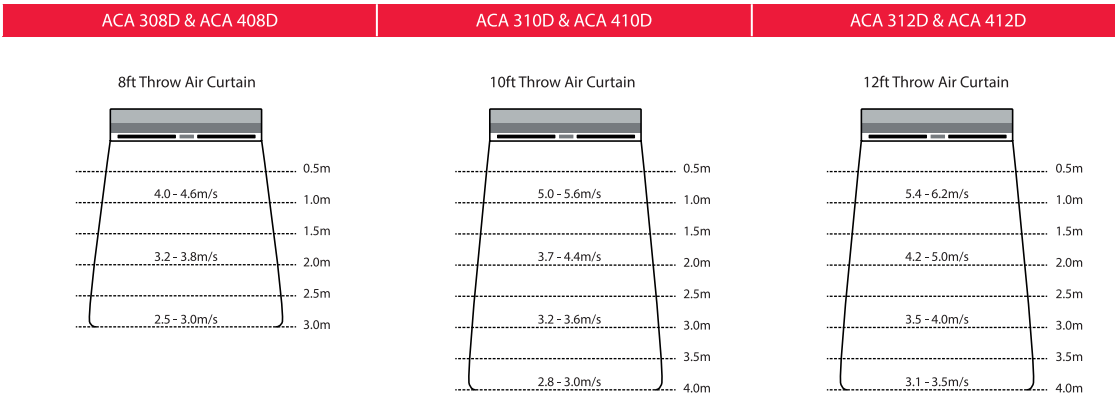
Model	Units Dimension (mm)							
	A	B	C	D	E	F	G	H
ACA 308BP/310BP/312BP	900	50	400	113	250	250	212	222
ACA 408BP/410BP/412BP	1200	200	400	113	250	250	212	222



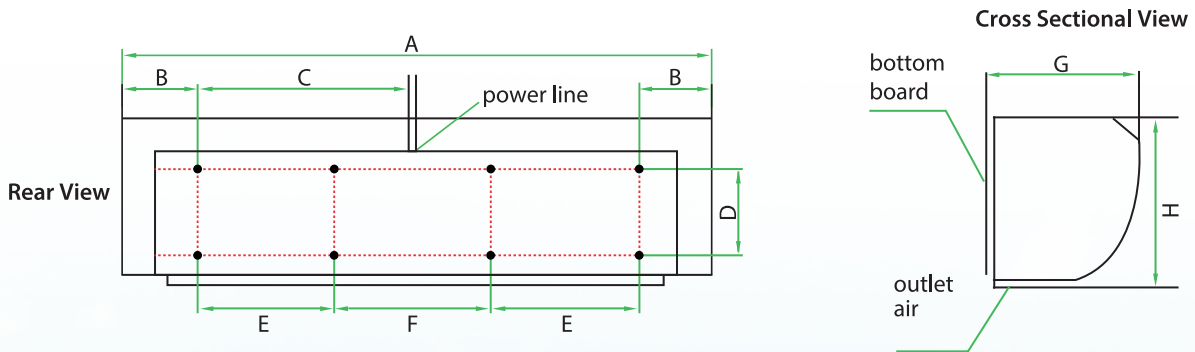


## Standard Series

### Air Velocity Charts



### Installation Dimensions



Model	Units Dimension (mm)							
	A	B	C	D	E	F	G	H
ACA 308D/310D/312D	900	105	345	120	230	230	212	230
ACA 408D/410D/412D	1200	105	495	120	330	330	212	230

## Specifications



### BP Lite Series

Model		ACA 308BP		ACA 408BP		ACA 310BP		ACA 410BP		ACA 312BP		ACA 412BP	
		HI	LOW	HI	LOW	HI	LOW	HI	LOW	HI	LOW	HI	LOW
Rated Voltage	V	220 - 240		220 - 240		220 - 240		220 - 240		220 - 240		220 - 240	
Rated Frequency	Hz	50		50		50		50		50		50	
Current	A	0.38	0.32	0.45	0.38	0.81	0.72	0.94	0.87	1.14	1.09	1.31	1.24
Input Power	W	89	76	106	91	200	175	250	210	276	250	320	300
Air Flow	CFM	442	379	585	504	598	491	802	690	698	625	970	792
Air Speed	m/s	9.6	8.5	9.3	8.4	14.4	11.9	14.5	12.5	17.8	15.9	16.3	14.5
Sound Level	dB(A)	45	42	45	42	56	53	58	55	57	54	58	55
Unit Size (H x W x D)	mm	222 x 900 x 212		222 x 1200 x 212		222 x 900 x 212		222 x 1200 x 212		222 x 900 x 212		222 x 1200 x 212	
Net Weight	kg	11.3		14.0		11.3		14.0		11.3		14.0	



### D Standard Series

Model		ACA 308D		ACA 408D		ACA 310D		ACA 410D		ACA 312D		ACA 412D	
		HI	LOW	HI	LOW	HI	LOW	HI	LOW	HI	LOW	HI	LOW
Rated Voltage	V	220 - 240		220 - 240		220 - 240		220 - 240		220 - 240		220 - 240	
Rated Frequency	Hz	50		50		50		50		50		50	
Current	A	0.59	0.47	0.73	0.57	0.81	0.59	1.08	0.79	0.92	0.72	1.2	0.92
Input Power	W	130	104	160	127	195	142	260	189	218	171	285	222
Air Flow	CFM	580	482	754	620	635	510	810	700	698	600	1010	820
Air Speed	m/s	12.2	10.8	11.8	10.4	14.8	12.5	14.8	12.5	16.7	14.5	16.5	15.6
Sound Level	dB(A)	48	51	48	51	54	57	56	59	57	60	57	60
Unit Size (H x W x D)	mm	230 x 900 x 212		230 x 1200 x 212		230 x 900 x 212		230 x 1200 x 212		230 x 900 x 212		230 x 1200 x 212	
Net Weight	kg	17.0		21.0		17.0		21.0		17.0		21.0	

## EASI-GARD AIR CURTAIN series

### ▼ The Invisible Wall

Working quietly, the Acson Easi-Gard Series acts as an invisible wall that contains the good and protects from the unwanted. The wide range of application enable it to be installed in numerous locations from over the doorways, windows and openings between indoor and outdoor or between two interior spaces.

## Features

- 1 Sirocco fan design with powerful airflow
- 2 Adjustable deflector to position according to different preferences
- 3 Quiet operation
- 4 Two different types of casing for selection.
  - Plastic Casing (BP series)
  - Metal Casing (D series)
- 5 Selectable fan speed with a switch control - High & Low
- 6 Slim profile and elegant design blends with any interior
- 7 Simple installation in 3 simple steps: fix installation plate, hand the body, tighten
- 8 Air flow up to 12ft height

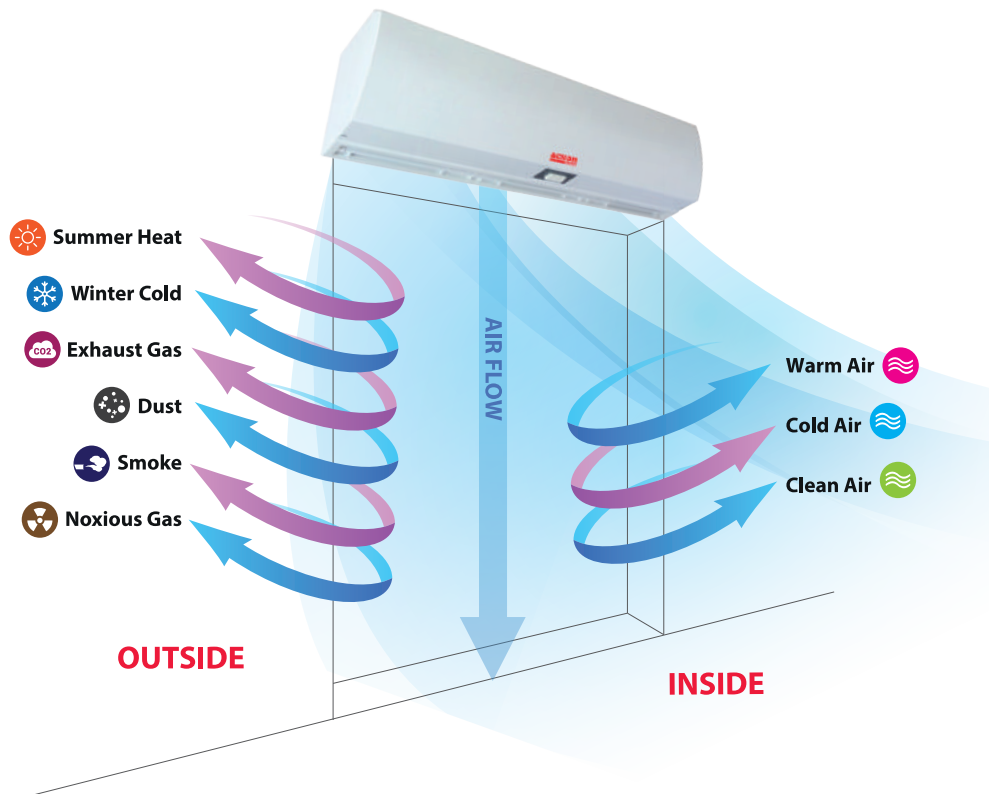
### ▼ The Good, Stays in

By minimizing leakage of cool, clean and desirable air, indoor temperature is kept without big fluctuations. This improves the occupants comfort level.

When cool air is kept in, compressor will be working less, hence lower energy consumption, power bill and longer lifetime, a definite winner against the rising cost.

### ▼ The Bad, Stays out

Easi-gard series, act as an air-door to shield heat, airborne pollutants, oily mist, smoke and dust from getting into your good space. This improve the overall Indoor Air Quality (IAQ) by controlling at the source.



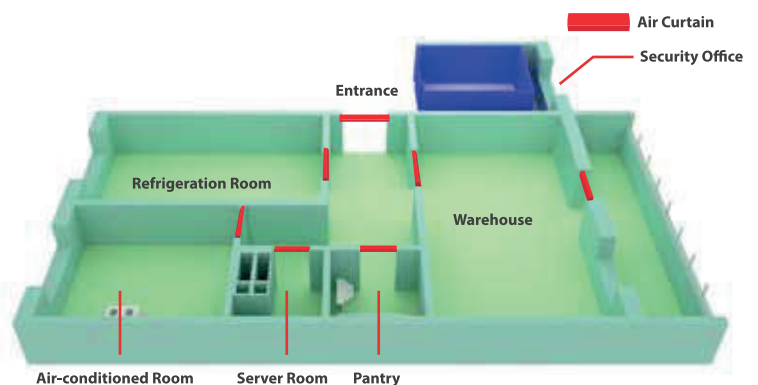
### ▼ Places to install:

#### Between Indoor and Outdoor

- Café, Restaurants, Garage, Offices, Factory, Warehouse, Convention Center

#### Between Interior Spaces

- Warehouse/Finish Good Area, Refrigeration Room, Kitchen, Air-Conditioned Space



**ACSON**<sup>®</sup>  
International  
Air Conditioners

**ACSON MALAYSIA SALES & SERVICE SDN.BHD.** (129688-D)

a member of **DAIKIN** group

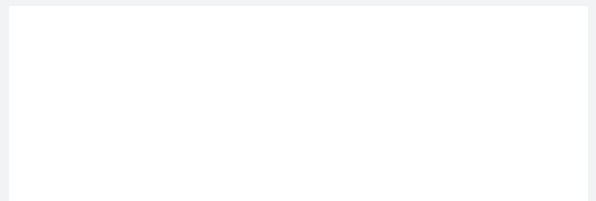
Lot 4, Lorong 19/1A, Seksyen 19, 46300 Petaling Jaya,  
Selangor Darul Ehsan, MALAYSIA.

Tel : +603 7964 8200 Sales Fax : +603 7956 9909

Service Fax : +603 7956 9907 Acson Careline : 1300 22 3344

<b>Penang</b> : +604-5377 176	<b>Pahang</b> : +609-5178 696
<b>Perak</b> : +605-3129 828	<b>Kelantan</b> : +609-7405 233
<b>Melaka</b> : +606-2926 196	<b>Sarawak</b> : +6082-344 128
<b>Johor</b> : +607-3551 599	<b>Sabah</b> : +6088-420 205

Authorized Dealer :



Products manufactured in an ISO certified facility.  
This document contains the most current product information as of this printing.  
For the most up-to-date product information, please logon to [www.acson.com.my](http://www.acson.com.my)

[www.acson.com.my](http://www.acson.com.my)