



Inverter WiFi

ACSON
International
Air Conditioners



MY ACSON



CAT-A3CKY,CCY-2201

R32

LIGHT COMMERCIAL

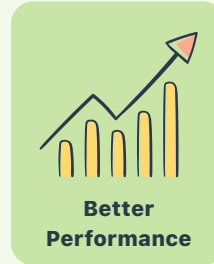
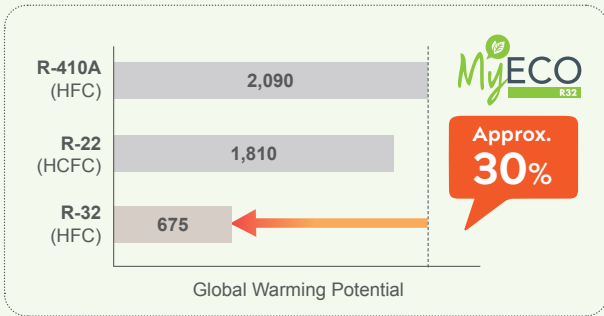
Single Split • Inverter Series





R32 Refrigerant Greenery Refrigerant

Acson MyEco offers eco-friendly products which lead to a more environmentally friendly and sustainable future. R32 refrigerant contribute to zero Ozone Depletion potential and the reduction of global warming potential up to 30% when compared with R410A and R22 refrigerant. It is everyone's responsibilities to take care of our mother earth to make this planet a better place for our communities and generations to come.



The R32 refrigerant has lower Global Warming Potential (GWP), which is one third lower than R410A.

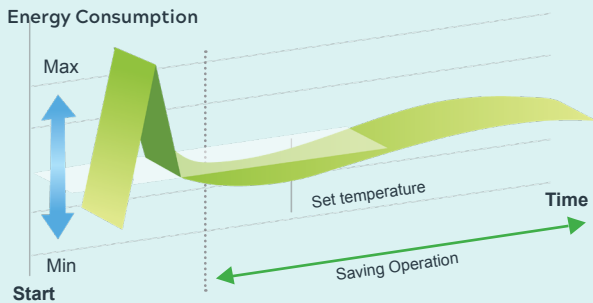


Inverter Technology

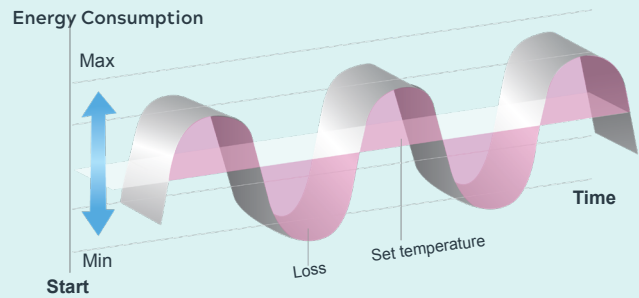
Inverter technology controls the compressor's speed accordingly to continuously regulate the room's temperature. The compressor not running constantly at full power, as the system utilizes a controlled compressor that works a variable speed settings. This is consequently lead to much more energy efficient and better cooling comfort.

Energy Saving

When the indoor temperature has reach the set temperature, inverter technology will adjust to low capacity operation to maintain the set temperature. This makes inverter technology is more energy saving than non-inverter technology which must repeatedly start and stop their compressor's operation to maintain the set temperature which can be constly endeavor.



INVERTER: AC will cool with maximum capacity at start up then the compressor will adjust its speed accordingly to continuously regulate the room's temperature.

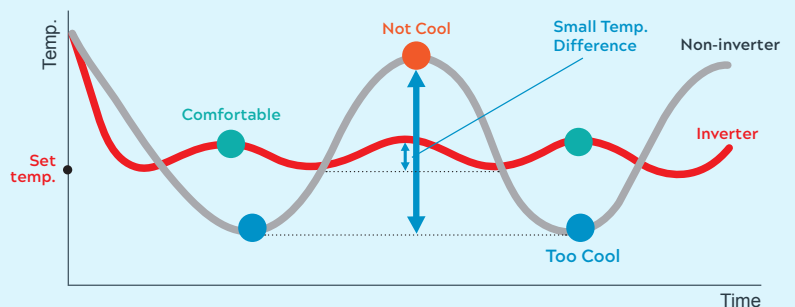


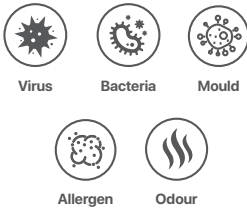
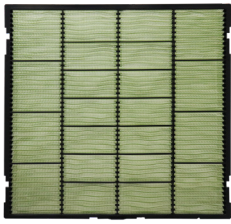
NON INVERTER: It maintain the temperature by repeatedly switching power ON and OFF. The repeated ON and OFF operations will resulting more electric consumption due to bigger temperature fluctuation.

Cooling Comfort

Inverter's compressor speed is controlled at variable speed which provides a more precise, on-demand approach to temperature control whereas the non-inverter system used a fixed speed compressor, which cycles the unit on and off resulting unpleasant temperature swings

Temperature Fluctuation During Cooling Operation

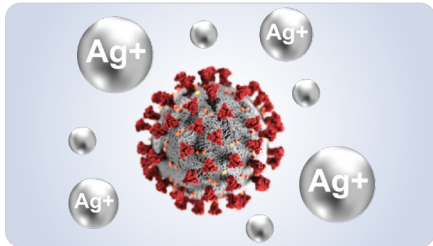




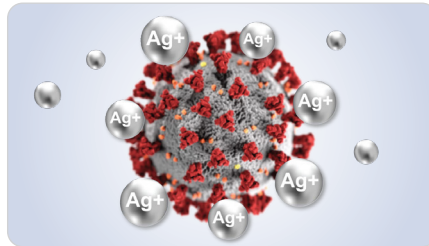
Acson R32 Ceiling Cassette comes with Filtronz+ filter, Anti Virus Technology as standard which proven effectively decompose virus and reduce bacteria & fungus on the filter surface.

- 99% effectiveness on decomposing virus and reduction of bacteria & fungus.
- Environmentally friendly and recyclable.
- Non-toxic & non-hazardous, skin friendly
- Suitable for residential and light commercial application

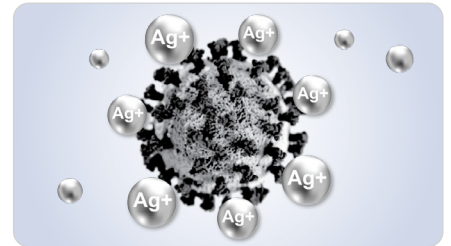
*Recommended to clean the filter once every two weeks to deliver consistent performance around a year.



Step 1 Silver ions (AG+) on the filter absorb virus to the filter surface



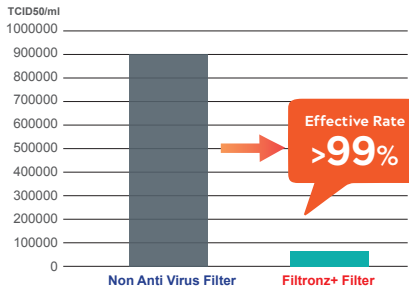
Step 2 Combination organic and inorganic components simultaneously react to the protein that exist on the virus surface.



Step 3 Enzyme protein is inactivated, thus it leads the decomposition and avoid the spreading of the viruses.

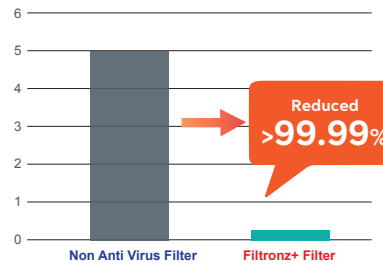
Decomposition of Viruses

The effectiveness rate of virus decomposition is increased by 99% in 2 hours



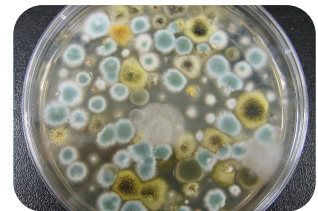
Reduction of Bacteria

The effectiveness rate of bacteria reduction is more than 99.99% in 24 hours



Reduction of Fungus

Generation of fungus achieved Grade 0 in 24 hours (No fungus visible under the microscope)



*Image is for illustration purposes

Test Measuring Method:

Textites- Determination of antiviral activity of textile products (ISO 18184-2014)

Test Number: 2020FM24347R01, 2020FM2604R01

Test Measuring Method:

Test for antimicrobial activity of plastic (JIS Z 2801 : 2010)

Test Number: 2021FM05003R01E

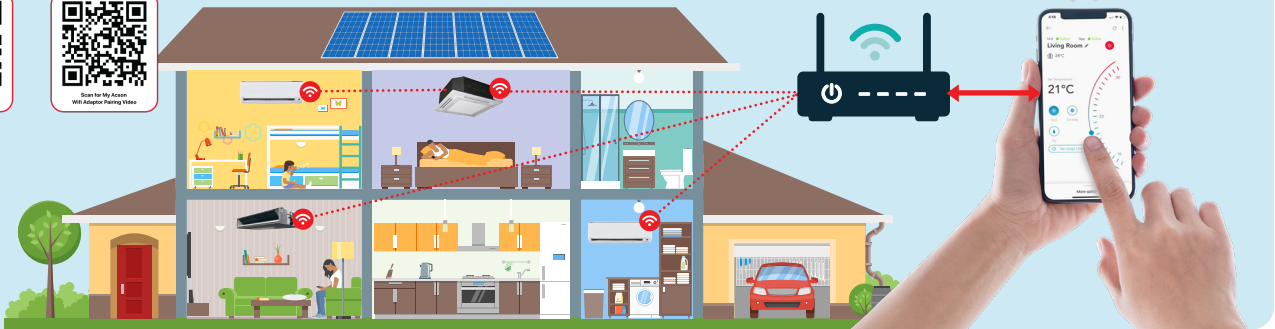
Tested Specimen	Virus		Bacteria		Fungus
	Influenza H1N1	"Chicken Coronavirus Infectious bronchitis Virus"	Esherichia Coli	Staphylococcus	Aspergillus Niger, Penicillium Pinophilum, Trichoderma viride, Chaetomium Globosum, Paecilomyces Variotii
Test Organization	Guangdong Detection Center of Microbiology				
Test Report Number	No.2020FM24347R01	No.2020FM26047R01	No.2021FM05003R01E		No.2021FM05004R01E
Test Result	99.94% in 2 hours	99.99% in 2 hours	>5.9 (99.99987%)	>4.6 (99.99749%)	Grade 0 (no fungus visible under microscope)

MY Acon, MY Control

Built in Wi-Fi : R32 Ceiling Cassette, A3CK-CF,A3CK-FF & A3CKY-FF SERIES

Optional Wi-Fi: R32 Ceiling Concealed A3CC-J & A3CCY-J SERIES, R32 CEILING MOUNTED A3CM-C SERIES

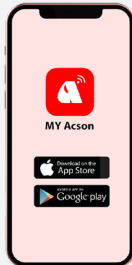
Scan for My Acon Wifi Adaptor Installation and Pairing Video.



Pairing Steps

Step 1: Download and Sign Up

Download "MY Acon" app from App Store (IOS) or Google Play (Android).



Step 2: Add a new unit

Tap " " to add new air conditioner unit. Scan the QR code stickers that can be found on the WIFI Adaptor, inside WIFI Adaptor box or warranty card*.



*WIFI built-in unit only

Step 3: Pair up success.

You can control your air conditioner with just a single tap on your mobile screen now.



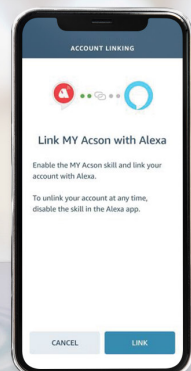
Live Smart with Voice Control

The introduction of Amazon Alexa compatibility to our air conditioners providing you a chance to have a smart home system with total climate control and comfort. Hands-free tasks by using voice control like turning the air conditioners on and off, managing the temperature and more.

"Alexa, turn on Aircond for Bedroom."

"Alexa, set Living Room temperature to 23."

Voice Control
One Command Multiple Air Conditioners



Amazon, Alexa, and all related marks are trademarks of Amazon.com, Inc. or its affiliates.

Product Line Up



Capacity	2.0HP	2.5HP	2.8 HP	3.0HP	3.5HP	4.0HP	5.0HP
Indoor Unit							
Ceiling Cassette							
Ceiling Concealed							
Outdoor Unit							

High Reliability Outdoor Units

R32 Inverter Light Commercial outdoor unit constructed with gold fin coating as standards for A3CKY20/25/28 and microchannel heat exchangers design for A3CKY30/35/40/50.

Durable Quality of Casing

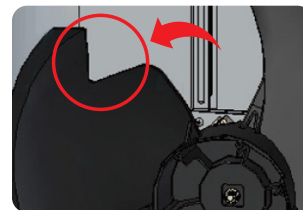
Adopted zinc coated heavy gauge galvanised steel, with exterior surfaces finished with a weather resistant polyester powder casing to improve the durability.

Coated Printed Circuit Boards (PCB)

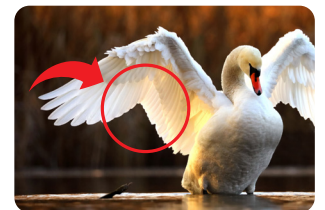
Prevents problems induced by humidity and airborne dust. It also protects against salt from contained in sea breezes. Both sides of PCB in outdoor units is coated for better assurance.

V-Cut Propeller Fan

Through use a V-cut propeller fan that imitates the efficiency of the swan, migratory bird where the airflow becomes smooth and loss is reduced. Therefore, the performance increases tremendously.



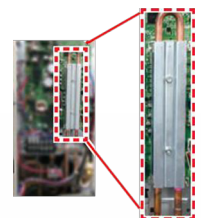
V-cut Propeller Fan



Imitating the performance of the swan

Refrigerant Cooling

A unique refrigerant cooling system helps to protect the printed circuit board and maintain high cooling capacity especially during high outdoor temperatures.



Feature Inverter Ceiling Cassette

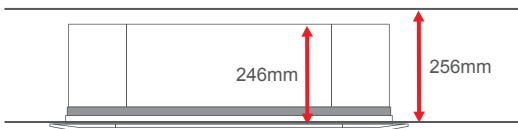
One For All Panel Design

The curvy edge and same panel size for all models enabling it to blend in perfectly with any kind of space design especially when there are multiple units installed together.



Unit Dimension	Panel Dimension
840 x 840 mm	950 x 950 mm

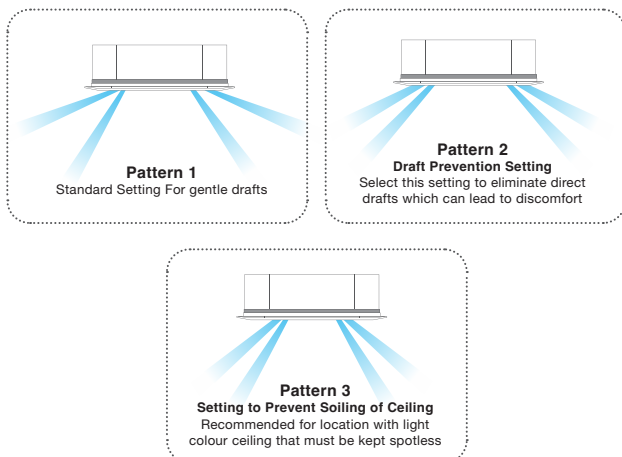
Fit For Tight Ceiling Application



Model	Unit Height
A3CKY20/25/28/30F	246 mm
A3CKY35/40/50F	288 mm

4 Dimensional Cooling Comfort

Prioritize your cooling comfort with different airflow setting. Airflow direction can be fixed at user's designated angle by remote controller. Set the airflow pattern setting according to your need and situation.



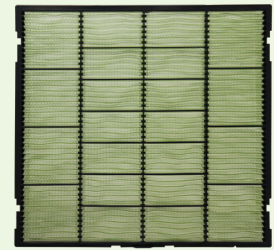
Switchable Fan Speed

Control the fan speed up to 4-steps for comfort selection. To enjoy the noise-free disturbance, quiet mode can be selected to achieve smooth airflow with minimum noise pollution



Indoor Air Purification

Equipped with Filtronz+ filter as standard decompose virus and reduce bacteria & fungus on the filter surface with effectiveness up to 99.99%.



Virus



Bacteria



Mould



Allergen



Odour

Live The Smarter Way

Built in Wi-Fi Acson Network Adapter and ready to be paired with MY Acson app. Offering you the smart convenience to control and real time monitoring of your ceiling cassette



MY ACSON



Scan for My Acson Wifi Adaptor Installation and Pairing Video.



Scan for My Acson Wifi Adaptor Installation Video



Scan for My Acson Wifi Adaptor Pairing Video

Dehumidify While Maintaining The Room Temperature

Too much humidity can cause discomfort and unpleasant situation. Select dry mode to keep the room dehumidified while maintaining the room temperature for better comfort

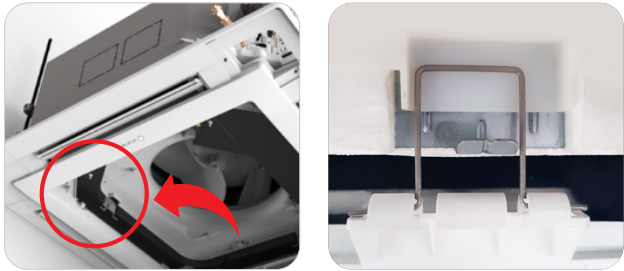
Easy Height Adjustment

Each unit comes with adjustable cover pockets at four corners which is designed for easier adjustment of the suspended height of the unit.



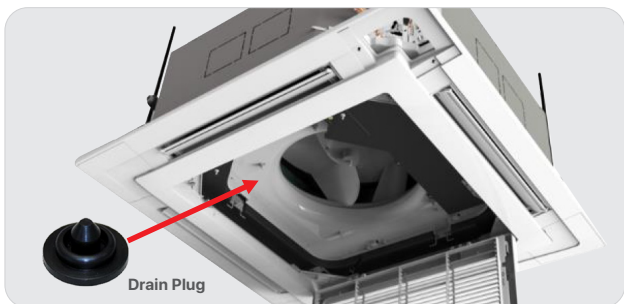
Panel Hook Mechanism

Support Panel with panel hook to provide hassle-free installation or serviceability by allowing to work with both hand free.



Easier Maintainance

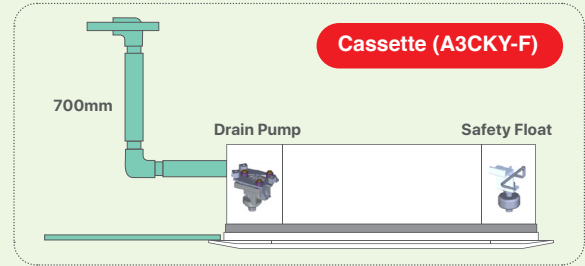
The condition of drain pan and drain water can be checked regularly by removing intake grille and drain plug.



Built-In Drain Pump

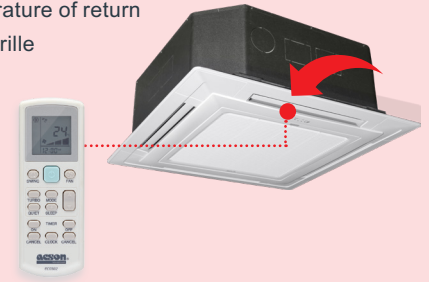
Comes with high head drain pump of 700mm* pressure head at standard. Drainage protection with safety float incorporated in drain pump where it functions to monitor water level and trigger drain pump to cut in when drainage water reach certain level.

* 700mm is calculated from drain pipe outlet to highest elevation point.



Standard Setting (GS02 Wireless Controller)

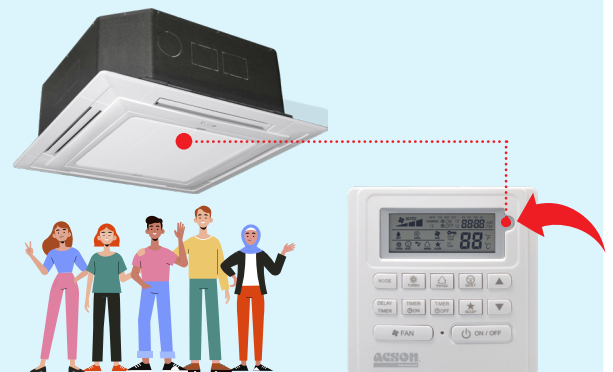
- Receiver is in panel
- Sensing temperature of return air into intake grille



Optional Wired Controller SLM9

SLM wired can be purchased as optional accessories. Temperature sensing can be set at the unit, or to further improve comfort level, closer to target area at the wired controller SLM9.

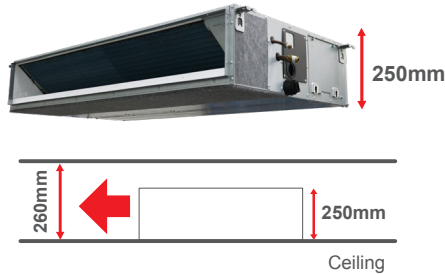
- Optional receiver and thermo sensor
- Sensing temperature of surrounding at human height



Feature Inverter Ceiling Concealed

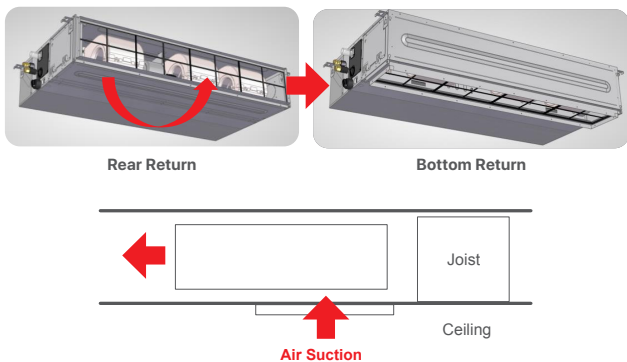
Low Unit Height Across All Models

Designed to be able fit into ceiling height as low as 260mm. The unit can be sophisticatedly concealed for various design applications especially with low height ceiling.



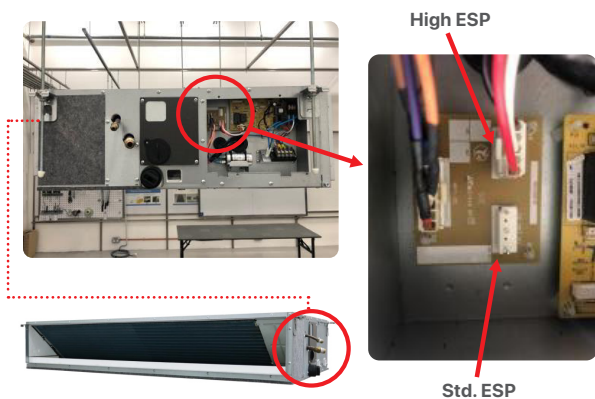
Easy Conversion For Flexible Installation

Easy conversion from rear return to bottom return is possible to be able to fulfill the building structure requirement.



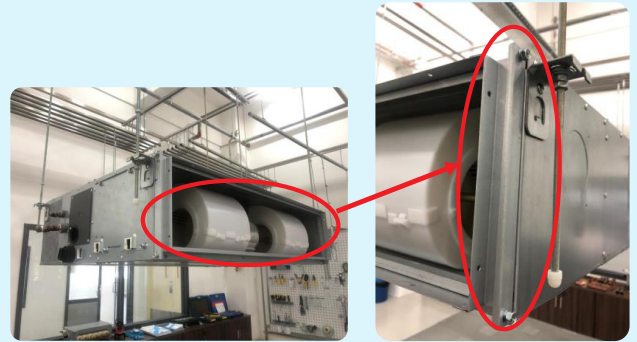
Selectable External Static Pressure

2 different ESP setting can be selected by switching the connector inside the control box as shown as below. The adjustment can be easily done during the installation at the control box.



Pre-Installed Filter Rail

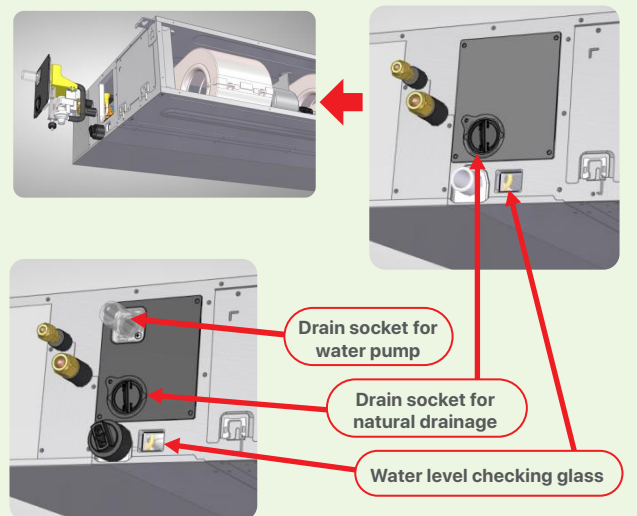
Provides flexibility to install filter if required. Filters are optional purchased as accessories.



Side Removal Metal Plates (Both Sides)

Optional Drain Pump

Drain pump is optional purchased as accessories and installed at the designated location of the unit.



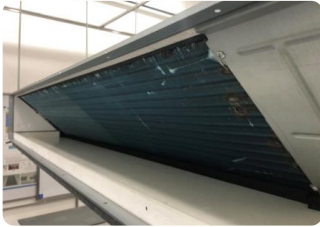
Flexible Drain Pipe

One flexible drain pipe will be supplied as standard with unit to ensure that the drain joint is tightly connected. The drain pipe can be bent 180 degrees to connect at any drainage directions.

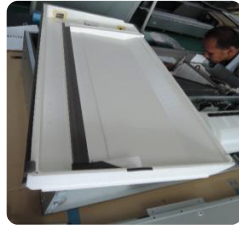


Light Weight Drain Pan (EPS)

Comes with EPS foam drain pan with ABS resin coating to avoid rusting and prevent condensation as it has high heat resistance. Lighter weight of units for the ease of the installation and slope design to drain water efficiently.



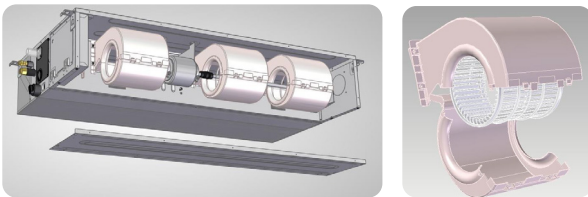
EPS foam drain pan with ABS resin coating



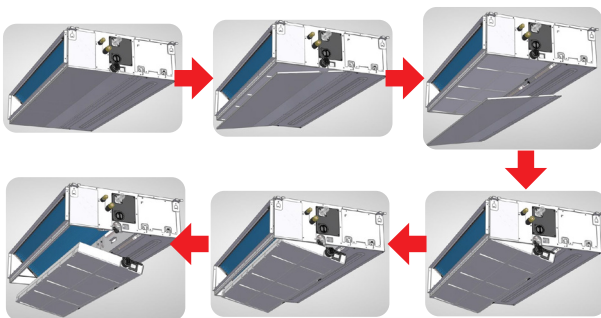
Drain Pan Slope Design

Easy Access and Servability

Blowers and motors can be easily accessible by just removing bottom panel and mid flange as shown as below. Blowers can be removed from the housing easily as well by opening the housing case



Drain Pan and Coil can be easily accessible by removing front bottom panel and mid flange. The steps are illustrated as below. Coil can be accessed once the drain pan is removed.



Drain Pan Maintenance Check Window

Drainage or dirt in the pan could be easily checked without require any additional tools

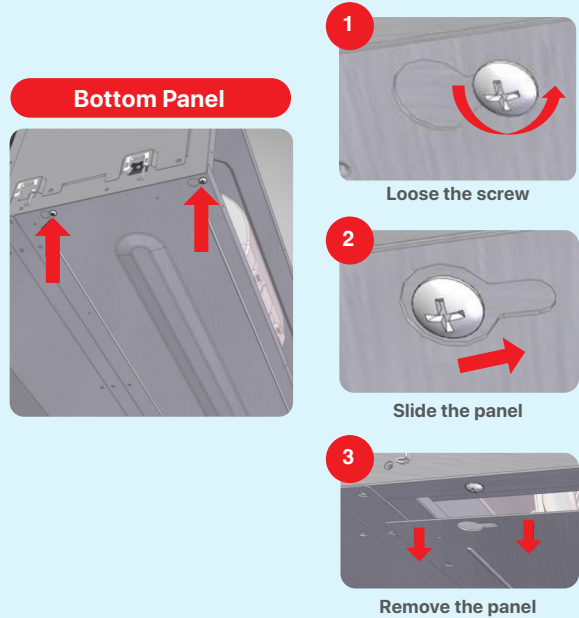


Drain pump slot

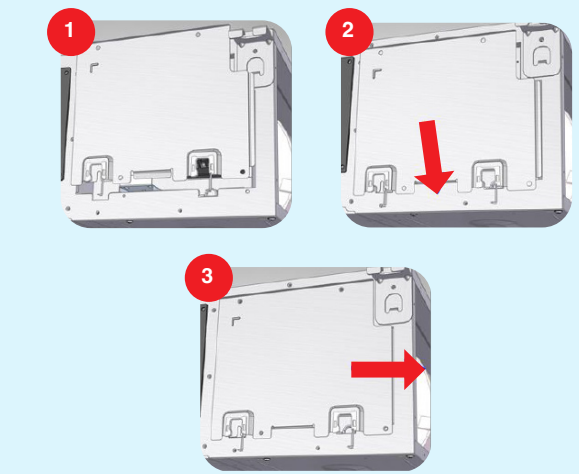
Drain pan inspection window

Pre Holding Mechanism

Bottom and Control Box is designed with Pre-Holding Mechanism to ease the installation by reducing the manpower needed.

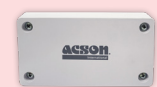


Control Box Cover



Optional NS Splitter with Network Adapter

With optional purchase of NS Splitter which comes together with network adapter, enjoy the smart convenience of cooling comfort control and real time monitoring at your fingertips.



Acson NS Splitter



Technical Specification

Ceiling Cassette



Model	Indoor Unit		A3CKY20FF	A3CKY25FF	A3CKY28FF	A3CKY30FF	A3CKY 35FF	A3CKY40FF	A3CKY50FF		
	Outdoor Unit		A3LCY20F	A3LCY25F	A3LCY28F	A3LCY30F	A3LCY35F	A3LCY40F	A3LCY50F		
Capacity	HP		2.0HP	2.5HP	2.8HP	3.0HP	3.5HP	4.0HP	5.0HP		
Nominal Cooling Capacity	BTU/h		18500 (7,800-19,100)	20,500 (8,900-21,500)	24,200 (10,900-27,300)	30,000 (14,300-34,100)	36,000 (17,100-38,200)	42,000 (19,500-47,800)	48,000 (21,200-52,900)		
	kW		5.42	6.00	7.10	8.80	10.55	12.31	14.07		
Nominal Total Input Power	W		1,680	1,960	2,070	2,710	3,470	4,215	5,455		
Nominal Running Current	A		7.37	8.55	9.07	12.00	15.3	6.48	8.38		
EER	W/W		3.23	3.07	3.43	3.24	3.04	2.92	2.58		
CPSF	Wh/Wh		4.47	4.34	4.78	4.67	4.68	4.29	4.10		
Power Source	V/Ph/Hz		220-240/1/50	220-240/1/50	220-240/1/50	220-240/1/50	220-240/1/50	380-415/3/50	380-415/3/50		
		Power from OUTDOOR									
Indoor Unit	Air Flow (H/M/L/Q)	CFM	890/760/620/490				1120/1030/890/760				
	Sound Pressure Level (H/M/L/Q)	dBA	44/40/37/35	44/40/37/35	44/40/37/35	44/40/37/35	48/46/43/40	48/46/43/40	48/46/43/40		
	Unit Dimensions (H x W x D)	Unit	mm (in)	246 x 840 x 840 (9.69 x 33.07 x 33.07)				288 x 840 x 840 (11.34 x 33.07 x 33.07)			
		Packaging	mm (in)	324 x 922 x 922 (12.76 x 36.30 x 36.30)				370 x 922 x 922 (14.57 x 36.30 x 36.30)			
	Panel Dimensions (H x W x D)	Panel	mm (in)	65 x 950 x 950 (2.56 x 37.40 x 37.40)							
		Packaging	mm (in)	116 x 1,008 x 990 (4.57 x 39.69 x 38.98)							
	Unit Weight	kg	22	22	22	22	25	25	25		
	Panel Weight	kg	5	5	5	5	5	5	5		
	Condensate Drain Size	mm	19	19	19	19	19	19	19		
	Outdoor Unit	Sound Pressure Level	dBA	52	52	52	53	54	54	56	
Unit Dimension (H x W x D)		mm (in)	615 x 845x 300 (24.21 x 33.27 x 11.81)			695 x 930 x 350 (27.36 x 36.61 x 13.78)		990 x 940 x 320 (38.98 x 37.01 x 12.60)			
Unit Weight		kg	37	37	37	40	40	62	62		
Pipe Connection		Liquid	mm (in)	6.4 (1/4)	6.4 (1/4)	9.5 (3/8)	9.5 (3/8)	9.5 (3/8)	9.5 (3/8)	9.5 (3/8)	
		Gas	mm (in)	12.7 (1/2)	12.7 (1/2)	15.9 (5/8)	15.9 (5/8)	15.9 (5/8)	15.9(5/8)	15.9 (5/8)	
Maximun Piping Length		m (ft)	30(98.43)	30(98.43)	30(98.43)	50(164.04)	50(164.04)	50(164.04)	50(164.04)		
Maximun Piping Elevation		m (ft)	15(49.21)	15(49.21)	15(49.21)	30(98.43)	30(98.43)	30(98.43)	30(98.43)		
Refrigerant	R32										



GS02 (Default)



SLM9 (Optional)



A3LCY20/25/28F



A3LCY30/35F



A3LCY40/50F

Technical Specification

Ceiling Concealed



Model		Indoor Unit		A3CCY20J	A3CCY25J	A3CCY28J	A3CCY30J	A3CCY35J	A3CCY40J	A3CCY50J							
		Outdoor Unit		A3LCY20F	A3LCY25F	A3LCY28F	A3LCY30F	A3LCY35F	A3LCY40F	A3LCY50F							
Capacity		HP	2.0HP		2.5HP		2.8HP		3.0HP		3.5HP		4.0HP		5.0HP		
Nominal Cooling Capacity		BTU/h	18500 (7,800-19,100)		20,500 (8,900-21,500)		24,200 (10,900-27,300)		30,000 (14,300-34,100)		36,000 (17,100-38,200)		42,000 (19,500-47,800)		48,000 (21,200-52,900)		
		kW	5.42		6.00		7.10		8.79		10.55		12.31		14.07		
Nominal Total Input Power		W	1,940		2,300		2,105		2,770		3,520		4,680		5,390		
Nominal Running Current		A	8.51		10.10		9.20		12.40		15.60		7.23		8.24		
EER		W/W	2.79		2.61		3.37		3.17		3.00		2.63		2.61		
CPSF		Wh/Wh	4.16		4.13		4.36		4.76		4.59		3.98		4.38		
Power Source		V/Ph/Hz	220-240/1/50		220-240/1/50		220-240/1/50		220-240/1/50		220-240/1/50		380-415/3/50		380-415/3/50		
			Power from OUTDOOR														
Indoor Unit	Air Flow (H,M,L)		CFM	590/525/430		590/525/430		950/810/700		950/810/700		1260/1,095/920		1260/1,095/920		1260/1,095/920	
	External Static Pressure (Std, High)		Pa	30/50		30/50		30/50		30/50		50/80		50/80		50/80	
	Sound Pressure Level (H/M/L)		dBA	40/37/34		40/37/34		41/38/35		41/38/35		42/39/36		42/39/36		42/39/36	
	Unit Dimensions (H x W x D)	Unit	mm (in)	250 x 700 x 700 (9.84 x 27.56 x 27.56)				250 x 1,000 x 700 (9.84 x 39.37 x 27.56)				250 x 1,400 x 700 (9.84 x 55.12 x 27.56)					
		Packaging	mm (in)	337 x 916 x 924 (13.27 x 36.06 x 36.38)				337 x 1,216 x 924 (13.27 x 47.87 x 36.38)				337 x 1,616 x 924 (13.27 x 63.62 x 36.38)					
	Unit Weight		kg	24		24		31		31		40		40		42	
	Condensate Drain Size		mm	32		32		32		32		32		32		32	
Outdoor Unit	Sound Pressure Level		dBA	52		52		52		53		54		54		56	
	Unit Dimension (H x W x D)		mm (in)	615 x 845 x 300 (24.21 x 33.27 x 11.81)				695 x 930 x 350 (27.36 x 36.61 x 13.60)				990 x 940 x 320 (38.98 x 37.01 x 12.60)					
	Unit Weight		kg	37		37		37		40		40		62		62	
	Pipe Connection	Liquid	mm (in)	6.4 (1/4)		6.4 (1/4)		9.5 (3/8)		9.5 (3/8)		9.5 (3/8)		9.5 (3/8)		9.5 (3/8)	
		Gas	mm (in)	12.7 (1/2)		12.7 (1/2)		15.9 (5/8)		15.9 (5/8)		15.9 (5/8)		15.9(5/8)		15.9 (5/8)	
	Maximun Piping Length		m (ft)	30(98.43)		30(98.43)		30(98.43)		50(164.04)		50(164.04)		50(164.04)		50(164.04)	
	Maximun Piping Elevation		m (ft)	15(49.21)		15(49.21)		15(49.21)		30(98.43)		30(98.43)		30(98.43)		30(98.43)	
Refrigerant		R32															



GS02 (Optional)



SLM9 (Default)



A3LCY20/25/28F



A3LCY30/35F



A3LCY40/50F



ACSON
International
Air Conditioners

ACSON MALAYSIA SALES & SERVICE SDN.BHD.

a member of DAIKIN group

Business Registration NO.198401017130 (129688-D)

No. 7A, Jalan 13/4, Seksyen 13, 46200 Petaling Jaya,
Selangor Darul Ehsan, MALAYSIA.

Tel : +603 7964 8200 Sales Fax : +603 7956 9909

Service Fax : +603 7956 9907 Acson Careline : 1300 22 3344

Penang : +604-5377 176

Pahang : +609-5178 696

Perak : +605-3129 828

Kelantan : +609-7405 233

Melaka : +606-2926 196

Sarawak : +6082-344 128

Johor : +607-3551 599

Sabah : +6088-420 205

Authorized Dealer :



Products manufactured in an ISO certified facility.
This document contains the most current product information as of this printing.
For the most up-to-date product information, please logon to www.acson.com.my

CAT-A3CKY,CCY-2201

www.acson.com.my