



Provide trusted & advanced technologies



Diaphragm vacuum pumps
and compressors



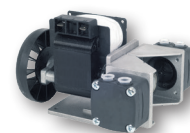
M Series

Diaphragm vacuum pumps and compressors

Diaphragm pumps of "M41 and M71 Series" are completely oil free. They can be used either to create vacuum or pressure. The "M41 Series" has a Ryton®-made pump body, the diaphragm and the gasket VITON, EPDM or PTFE. The "M71 Series" has the pump body made of galvanized anticorrosion aluminium, the diaphragms and the gaskets can be made of NBR, EPDM or VITON. All the pumps are available either with single or double-head to be used either in parallel or in series. The "M41 Series" can also be supplied with three or four heads to increase the capacity.

Applications

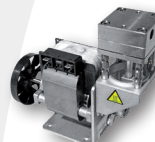
Packaging machines with modified atmosphere
Blister packaging machines
Bottle fillings
Chemical processes
Degassing materials
Solvent recovery systems
Distillation systems
Pick & place systems
Dental equipments
Cosmetic industries
Laboratories
Ozone generators
Gas analysers



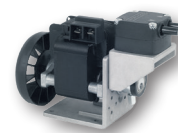
M41BX AC04



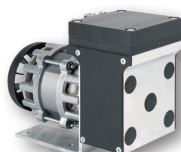
M41BX DC53



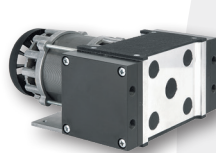
M41S AC04 HT



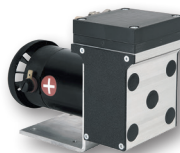
M41S AC04



M71S AC05



M71BX AC08



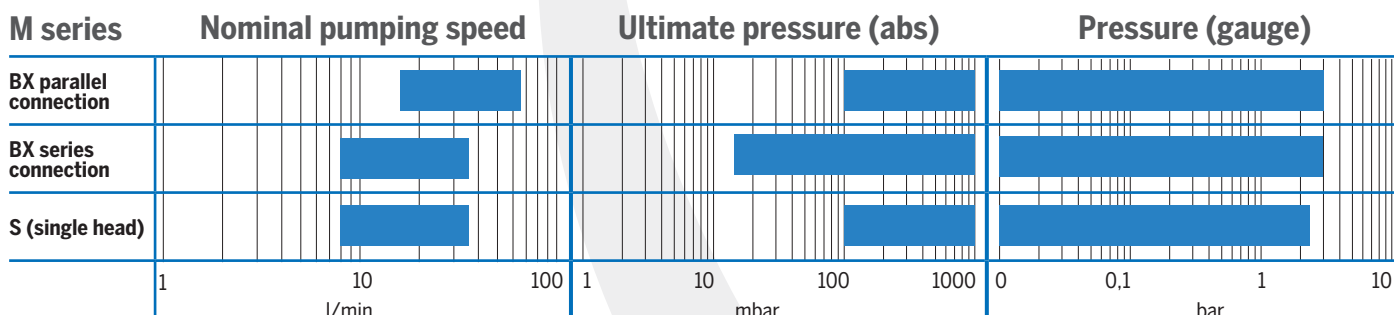
M71S DC54



M71BX DC55



EMMEBOX



		M41S AC04	M41S DC52	M41BX AC04	M41BX DC53	EMMEBOX AC04	M41S AC04 HT	M71S AC05	M71S DC54	M71BX AC08	M71BX DC55
Nominal pumping speed	50 Hz	8	8.5	Parallel 16	Parallel 17	9.5	7	30	33	Parallel 56	Parallel 62
	l/min			Series 8	Series 8.5					Series 30	Series 33
Ultimate pressure (abs)	60 Hz	9.5		Parallel 19	Series 8.5	200	180	36	100	Parallel 68	Parallel 100
	mbar	200	200	Series 9.5	Series 40					Series 36	Series 15
Pressure (gauge)				Parallel 200	Parallel 200	2	0.7		0.7	Parallel 100	Parallel 100
	bar	2	2.5	Series 40	Series 40					Series 15	Series 15
Voltage*				Parallel 2	Parallel 3	2	0.7		0.7	Parallel 0.7	Parallel 0.7
	V	110/230 AC	12/24 DC	Series 1.3	Series 1.3					Series 1.3	Series 1.3
Total dimensions				110/230 AC	12/24 DC	110/230 AC	230 AC	110/230 AC	12/24 DC	110/230 AC	12/24 DC
	mm	140x171x104	131x166x104	147x135x100	149x119x75	180x120x116	150x185x142	169x213x130		194x153x94	230x153x94
										3.20	2.70

* Motors having different voltages could be supplied on demand

鍾武亮
Edwin Chong
Sales Director
+6012-954 1088
edwin@hexoind.com



Special series HT with body and valve made of AISI 316. Hot head.
Max. temperature of the pumped medium up to 200°C.

Hexo Industries (M) Sdn Bhd (939586-T)
1-2-11, i-Avenue, Medan Kampung Relau 1,
11900 Bayan Lepas, Penang, Malaysia.
Tel/Fax: +604-611 1186
www.hexoind.com