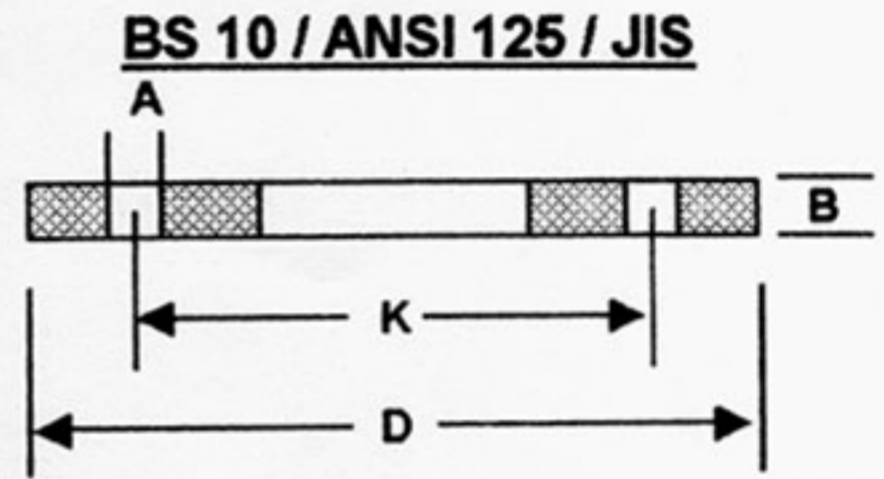
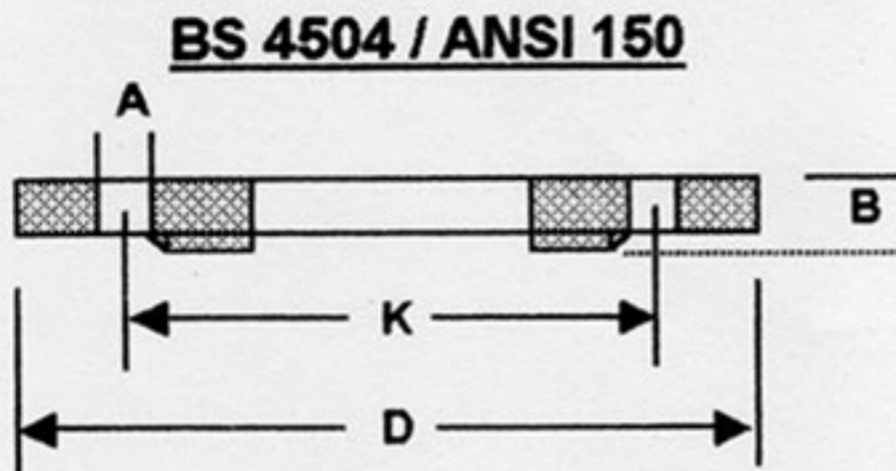




7-1, Jalan Empat, Off Jalan Chan Sow Lin, 55200 Kuala Lumpur, Malaysia.
Tel: 03-92215133 (Hunting Line) Fax: 03-92217381

**DIMENSIONS OF COMMONLY USED CARBON STEEL
SLIP ON FLANGES IN MALAYSIA**



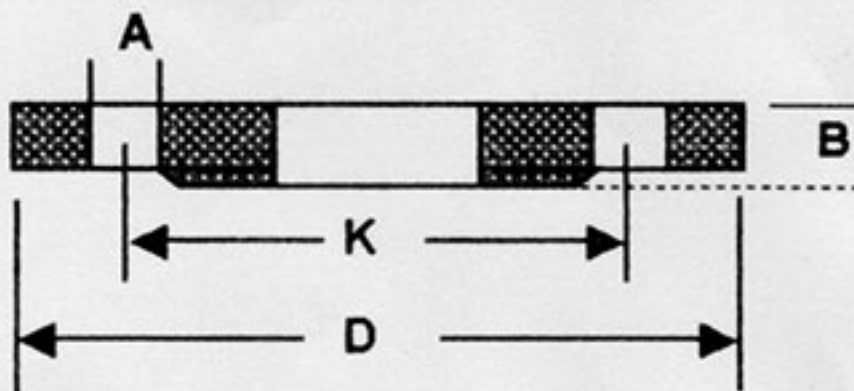
NOMINAL SIZES		STANDARD (TABLE)	OUTSIDE DIAMETER OF FLANGE (D)	PITCH CIRCLE DIAMETER (K)	DIAMETER OF BOLT HOLE (A)	BOLT		PLATE THICKNESS (B)
MM	INCH					SIZE	NO	
80	3	BS4504 PN10 / 16	200	160	18	16	8	20
		BS10 D / E	7-1/4 (184)	5-3/4 (146)	11/16 (17)	5/8 (16)	4	9/16 (14)
		ANSI 125 / 150	7-1/2 (191)	6 (152)	3/4 (19)	5/8 (16)	4	3/4 (19)
		JIS 5K	180	145	19	16	4	14
		JIS 10K	185	150	19	16	8	18
90	3-1/2	BS10 D	8 (203)	6-1/2 (165)	11/16 (17)	5/8 (16)	4	11/16 (17)
		BS10 E	8 (203)	6-1/2 (165)	11/16 (17)	5/8 (16)	8	11/16 (17)
		JIS 5K	190	155	19	16	4	14
		JIS 10K	195	160	19	16	8	18
100	4	BS4504 PN10 / 16	220	180	18	16	8	20
		BS10 D	8-1/2 (216)	7 (178)	11/16 (17)	5/8 (16)	4	11/16 (17)
		BS10 E	8-1/2 (216)	7 (178)	11/16 (17)	5/8 (16)	8	11/16 (17)
		ANSI 125 / 150	9 (229)	7-1/2 (191)	3/4 (19)	5/8 (16)	8	15/16 (24)
		JIS 5K	200	165	19	16	8	16
		JIS 10K	210	175	19	16	8	18
125	5	BS4504 PN10 / 16	250	210	18	16	8	22
		BS10 D / E	10 (254)	8-1/4 (210)	11/16 (17)	5/8 (16)	8	11/16 (17)
		ANSI 125 / 150	10 (254)	8-1/2 (216)	7/8 (22)	3/4 (19)	8	15/16 (24)
		JIS 5K	235	200	19	16	8	16
		JIS 10K	250	210	23	20	8	20
150	6	BS4504 PN10 / 16	285	240	22	20	8	22
		BS10 D	11 (280)	9-1/4 (235)	11/16 (17)	5/8 (16)	8	11/16 (17)
		BS10 E	11 (280)	9-1/4 (235)	7/8 (22)	3/4 (19)	8	11/16 (17)
		ANSI 125 / 150	11 (280)	9-1/2 (241)	7/8 (22)	3/4 (19)	8	1 (25)
		JIS 5K	265	230	19	16	8	18
		JIS 10K	280	240	23	20	8	22
175	7	BS4504 PN16	315	270	22	20	8	24
		BS10 D	12 (305)	10-1/4 (260)	11/16 (17)	5/8 (16)	8	3/4 (19)
		BS10 E	12 (305)	10-1/4 (260)	7/8 (22)	3/4 (19)	8	3/4 (19)
		JIS 5K	300	260	23	20	8	18
		JIS 10K	305	265	23	20	12	22
200	8	BS4504 PN10	340	295	22	20	8	24
		BS4504 PN16	340	295	22	20	12	24
		BS10 D	13-1/4 (337)	11-1/2 (292)	11/16 (17)	5/8 (16)	8	3/4 (19)
		BS10 E	13-1/4 (337)	11-1/2 (292)	7/8 (22)	3/4 (19)	8	3/4 (19)
		ANSI 125 / 150	13-1/2 (343)	11-3/4 (299)	7/8 (22)	3/4 (19)	8	1-1/8 (29)
		JIS 5K	320	280	23	20	8	20
		JIS 10K	330	290	23	20	12	22

NOTE :-
1) DIMENSION FOR FLANGES TO BS 4504 AND JIS ARE GIVEN IN MILLIMETRES ONLY
2) DIMENSION FOR ANSI AND BS 10 FLANGES ARE SHOWN IN INCHES WITH THE METRIC EQUIVALENT (TO NEAREST WHOLE MILLIMETRE) IN BRACKETS.

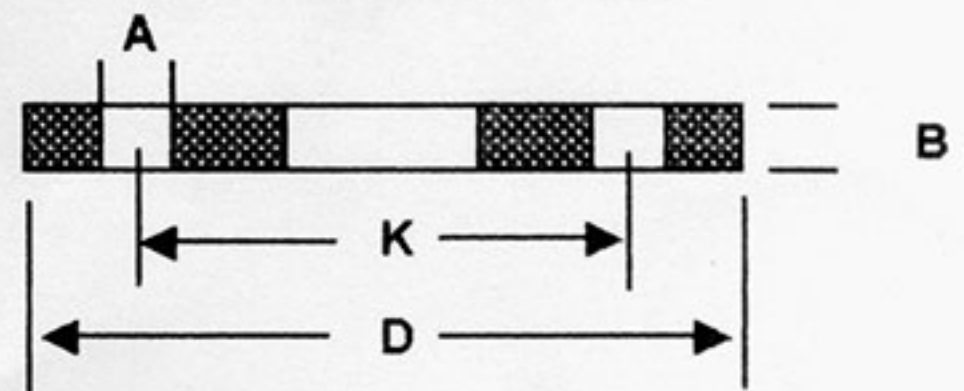


DIMENSIONS OF COMMONLY USED CARBON STEEL SLIP ON FLANGES IN MALAYSIA

BS 4504 / ANSI 150



BS 10 / ANSI 125 / JIS



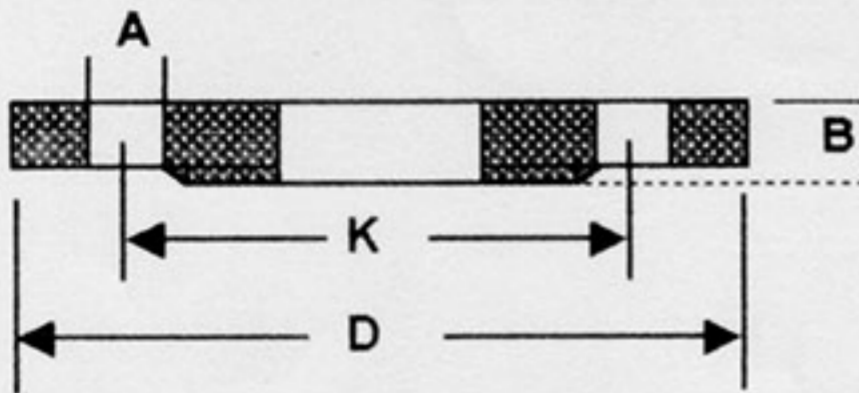
NOMINAL SIZES		STANDARD (TABLE)	OUTSIDE DIAMETER OF FLANGE (D)	PITCH CIRCLE DIAMETER (K)	DIAMETER OF BOLT HOLE (A)	BOLT		PLATE THICKNESS (B)
MM	INCH					SIZE	NO	
225	9	BS 10 D	14-1/2 (368)	12-3/4 (324)	11/16 (17)	5/8 (16)	8	3/4 (19)
		BS 10 E	14-1/2 (368)	12-3/4 (324)	7/8 (22)	3/4 (19)	12	13/16 (21)
250	10	BS 4504 PN10	395	350	22	20	12	26
		BS 4504 PN16	405	355	26	24	12	26
300	12	BS 10 D	16 (407)	14 (356)	7/8 (22)	3/4 (19)	8	3/4 (19)
		BS 10 E	16 (407)	14 (356)	7/8 (22)	3/4 (19)	12	7/8 (22)
		ANSI 125/150	16 (407)	14-1/4 (362)	1 (25)	7/8 (22)	12	1-13/16 (30)
		JIS 5K	385	345	23	20	12	22
		JIS 10K	400	355	25	24	12	24
		BS 4504 PN10	445	400	22	20	12	26
350	14	BS 4504 PN16	460	410	26	24	12	28
		BS 10 D/E	18 (457)	16 (407)	7/8 (22)	3/4 (19)	12	7/8 (22)
		BS 10 E	18 (457)	16 (407)	1 (25)	7/8 (22)	12	1 (25)
		ANSI 125/150	19 (483)	17 (432)	1 (25)	7/8 (22)	12	1-1/4 (32)
		JIS 5K	430	390	23	20	12	22
		JIS 10K	445	400	25	24	16	24
375	15	BS 10 D/E	21-3/4 (553)	19-1/2 (495)	1 (25)	7/8 (22)	12	1 (25)
		BS 4504 PN10	565	515	26	24	16	26
		BS 4504 PN16	580	525	30	27	16	36
		BS 10 D/E	22-3/4 (578)	20-1/2 (521)	1 (25)	7/8 (22)	12	1 (25)
		ANSI 125/150	23-1/2 (597)	21-1/4 (540)	1-1/8 (29)	1 (25)	16	1-7/16 (37)
		JIS 5K	540	495	25	24	16	24
400	16	JIS 10K	560	510	29	27	16	28
		BS 4504 PN10	615	565	26	24	20	28
		BS 4504 PN16	640	585	30	27	20	40
		BS 10 D	25-1/4 (642)	23 (584)	1 (25)	7/8 (22)	12	1-1/8 (29)
		BS 10 E	25-1/4 (642)	23 (584)	1 (25)	7/8 (22)	16	1-1/8 (29)
		ANSI 125/150	25 (635)	22-3/4 (578)	1-1/4 (32)	1-1/8 (29)	16	1-9/16 (40)

NOTE :- 1) DIMENSIONS FOR FLANGES TO BS 4504 AND JIS ARE GIVEN IN MILLIMETRES ONLY.
2) DIMENSIONS FOR ANSI AND BS 10 FLANGES ARE SHOWN IN INCHES WITH THE METRIC EQUIVALENT (TO NEAREST WHOLE MILLIMETRE) IN BRACKETS.

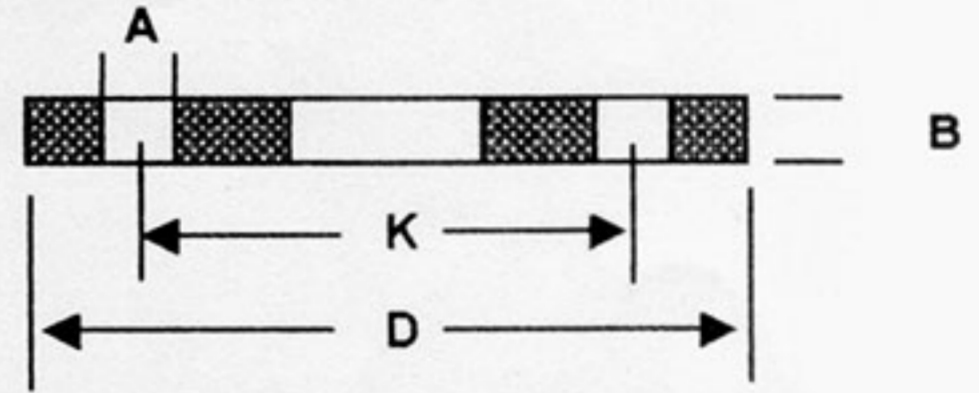


DIMENSIONS OF COMMONLY USED CARBON STEEL SLIP ON FLANGES IN MALAYSIA

BS 4504 / ANSI 150



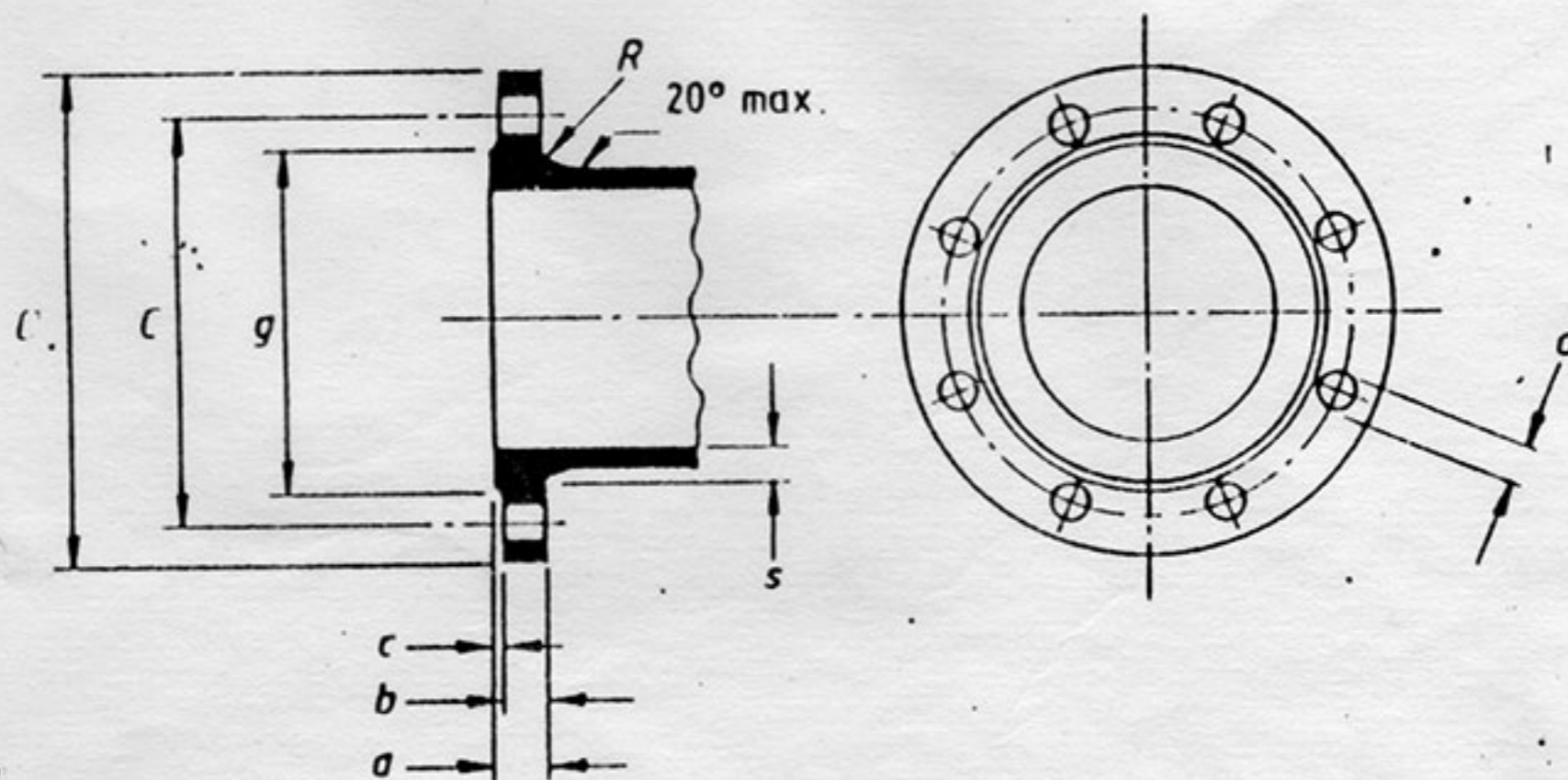
BS 10 / ANSI 125 / JIS



NOMINAL SIZES		STANDARD (TABLE)	OUTSIDE DIAMETER OF FLANGE (D)	PITCH CIRCLE DIAMETER (K)	DIAMETER OF BOLT HOLE (A)	BOLT		PLATE THICKNESS (B)
MM	INCH					SIZE	NO	
500	20	BS 4504 PN10	670	620	26	24	20	28
		BS 4504 PN16	715	650	33	30	20	44
		BS 10 D/E	27-3/4 (705)	25-1/4 (642)	1 (25)	7/8 (22)	16	1-1/4 (32)
		ANSI 125/150	27-1/2 (699)	25 (635)	1-1/4 (32)	1-1/8 (29)	20	1-11/16 (43)
525	21	BS 10 D	29 (737)	26-1/2 (673)	1 (25)	7/8 (22)	16	1-1/4 (32)
		BS 10 E	29 (737)	26-1/2 (673)	1-1/8 (29)	1 (25)	16	1-3/8 (35)
600	24	BS 4504 PN10	780	725	30	27	20	34
		BS 4504 PN16	840	770	36	33	20	52
		BS 10 D	32-1/2 (826)	29-3/4 (756)	1-1/8 (29)	1 (25)	16	1-3/8 (35)
		BS 10 E	32-1/2 (826)	29-3/4 (756)	1-1/4 (32)	1-1/8 (29)	16	1-1/2 (38)
		ANSI 125/150	32 (813)	29-1/2 (750)	1-3/8 (35)	1-1/4 (32)	20	1-7/8 (48)
700	28	BS 4504 PN10	895	840	30	27	24	38
		BS 4504 PN16	910	840	36	33	24	58
750	30	BS 10 E	39-1/4 (997)	36-1/2 (927)	1-3/8 (35)	1-1/4 (32)	20	2-1/16 (52)
800	32	BS 4504 PN10	1015	950	33	30	24	42
		BS 4504 PN16	1025	950	39	36	24	64
900	36	BS 4504 PN10	1115	1050	33	30	28	48
		BS 4504 PN16	1125	1050	39	36	28	72
1000	40	BS 4504 PN10	1230	1160	36	33	28	52
		BS 4504 PN16	1255	1170	42	39	28	78
1200	48	BS 4504 PN10	1455	1380	39	36	32	60
		BS 4504 PN16	1485	1390	48	45	32	94

- NOTE :-
- 1) DIMENSIONS FOR FLANGES TO BS 4504 AND JIS ARE GIVEN IN MILLIMETRES ONLY.
 - 2) DIMENSIONS FOR ANSI AND BS 10 FLANGES ARE SHOWN IN INCHES WITH THE METRIC EQUIVALENT (TO NEAREST WHOLE MILLIMETRE) IN BRACKETS.

Table 17. Flanges, type PN 10*



NOTE. The figure is schematic.

Nominal size DN	D	Pitch circle diameter, C	g	s	b	c	Bolt holes		s	R	Mass	Bolt size
							Number	d				
	mm	mm	mm	mm	mm	mm		mm	mm	mm	kg	
80	200	160	132	19.0	16.0	3	8	19	15.0	8	2.9	M16
100	220	180	156	19.0	16.0	3	8	19	15.0	8	3.3	M16
150	285	240	211	19.0	16.0	3	8	23	15.0	8	4.9	M20
200	340	295	266	20.0	17.0	3	8	23	16.0	8	6.8	M20
250	400	350	319	22.0	19.0	3	12	23	17.5	10	9.6	M20
300	455	400	370	24.5	20.5	4	12	23	19.5	10	12.8	M20
350	505	460	429	24.5	20.5	4	16	23	19.5	10	14.1	M20
400	565	515	480	24.5	20.5	4	16	28	19.5	10	16.3	M24
450	615	565	530	25.5	21.5	4	20	28	20.5	12	18.1	M24
500	670	620	582	26.5	22.5	4	20	28	21.0	12	21.8	M24
600	780	725	682	30.0	25.0	5	20	31	24.0	12	30.8	M27
700	895	840	794	32.5	27.5	5	24	31	23.0	12	42.0	M27
800	1015	950	901	35.0	30.0	5	24	34	24.5	12	57.0	M30
900	1115	1050	1001	37.5	32.5	5	28	34	26.5	12	65.0	M30
1000	1230	1160	1112	40.0	35.0	5	28	37	28.0	12	88.0	M33
1100	1340	1270	1218	42.5	37.5	5	32	37	30.0	12	105.0	M33
1200	1455	1380	1328	45.0	40.0	5	32	40	31.5	12	134.0	M36
1400†	1675	1590	1530	46.0	41.0	5	36	43	32.0	12	148.0	M39
1600†	1915	1820	1750	49.0	44.0	5	40	49	34.5	12	206.0	M45

*PN 10 is a non-preferred nominal pressure rating and PN 16 will normally be supplied.

† See 2.3.3 and appendix J when high tensile bolting is used.