



Medical Equipment

A Trusted Brand of Medical Equipment and Medical Solution

Tel: +6016 688 9687
Email: info@viridian.my Web: www.viridian.my

Add: Suite #111, Setapak Sentral, Lot No LG-10A, Lower Ground Floor, No 67, Jalan Taman Ibu Kota, Taman Danau Kota, Setapak, 53300 Kuala Lumpur, Malaysia.



At your local Lohmeyer Distributor

For more information on our products, visit our website at www.lohmeyer.com or call 1-800-828-2222. You can also contact your local distributor for more information.

Our products are designed to provide the highest quality of care for our patients. We are committed to providing the best possible patient care and are constantly improving our products to meet the needs of our patients.

We are proud to be a part of the medical community and to provide the highest quality of care for our patients. We are committed to providing the best possible patient care and are constantly improving our products to meet the needs of our patients.

Our products are designed to provide the highest quality of care for our patients. We are committed to providing the best possible patient care and are constantly improving our products to meet the needs of our patients.

We are proud to be a part of the medical community and to provide the highest quality of care for our patients. We are committed to providing the best possible patient care and are constantly improving our products to meet the needs of our patients.

Our products are designed to provide the highest quality of care for our patients. We are committed to providing the best possible patient care and are constantly improving our products to meet the needs of our patients.

We are proud to be a part of the medical community and to provide the highest quality of care for our patients. We are committed to providing the best possible patient care and are constantly improving our products to meet the needs of our patients.

For more

Contents

Medical
Bed Series

Medical Surgical
Light Series

Medical Surgical
Light Series

Medical Surgical
Light Series

Medical Bed Series

Model: YKL-D7d
Electric ICU Bed(Lateral Tilt)
Color Options: Sky Blue Apply
Green Wood Bruce Grey



Technical Parameters

External Length	2230mm
External Width	1030mm
Bed Height Min.	570mm
Bed Height Max.	820mm
Mattress Platform	1960 × 900mm
Safe Working Load	250kg



Technical Configuration

Linear Motor	2pcs
Telescopic Column Motor	3pcs
6" Double Side Secure Castors, Central Locking	4pcs
ABS Grace Side Rail with Integrated LCD Control Panel	1 set
ABS Grace Bed Ends with Integrated LCD Control Panel	1 set
Trapeze Socket	2pcs
IV Pole	1 set
IV Pole Prevision	4pcs
Drainage Hook	2pcs
Central Locking Pedal	2pcs

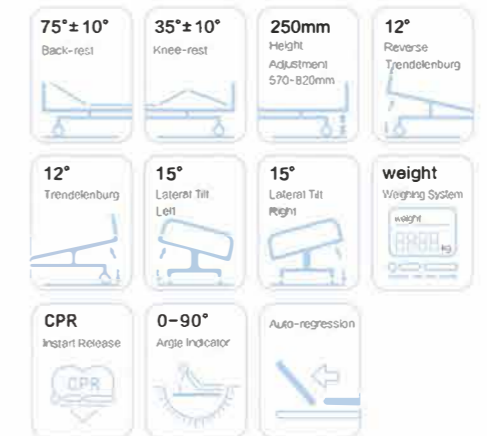
Medical Bed Series

Model: YKL-D9d
Electric ICU Bed(Lateral Tilt)
Color Options: Sky Blue Apply
Green Wood Bruce Grey



Technical Parameters

External Length	2280mm
External Width	1090mm
Bed Height Min.	480mm
Bed Height Max.	880mm
Mattress Platform	1925 × 900mm
Safe Working Load	250kg



Technical Configuration

Linear Motor	3pcs
Telescopic Column Motor	2pcs
6" Double Side Secure Castors, Central Locking	4pcs
ABS Grace Side Rail with Integrated LCD Control Panel	1 set
ABS Grace Bed Ends with Integrated LCD Control Panel	1 set
ø85mm Wall Bumper Wheel	4pcs
Trapeze Socket	2pcs
IV Pole	1 set
IV Pole Prevision	4pcs
Drainage Hook	2pcs
Central Locking Pedal	2pcs
X-ray Translucent Mattress Platform	1 set

Medical Bed Series

Model: YKL-X9x
Electric Bed
Color Options: Sky Blue
Wood Bruce Grey



Technical Parameters

External Length	2290mm
External Width	1020mm
Bed Height Min.	500mm
Bed Height Max.	1000mm
Mattress Platform	1830~2030 × 820mm
Safe Working Load	250kg



Technical Configuration

Linear Motor	6pcs
6" Double Side Secure Castors, Central Locking	4pcs
ABS Side Rail with Integrated LCD Control Panel	1 set
ABS Bed Ends One Step Removable	1 set
Ø74mm Wall Bumper Wheel	4pcs
IV Pole	1 set
IV Pole Prevision	4pcs
Drainage Hook	2pcs
5th Directional Wheel Pedal	2pcs
Central Locking Pedal	2pcs
X-ray Translucent Mattress Platform	1 set
Night Light	1 set
Data Storage System	1 set
Bed Push Handle for Emergency Transfer	1 set

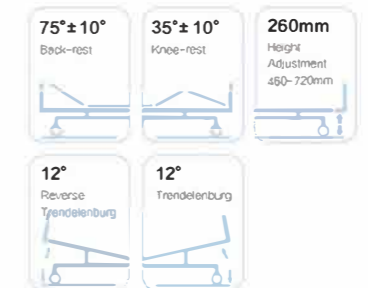
Medical Bed Series

Model: YKL-B4e
Manual Bed
Color Options: Sky Blue
Wood Bruce Grey



Technical Parameters

External Length	2160mm
External Width	1060mm
Bed Height Min.	460mm
Bed Height Max.	720mm
Mattress Platform	1925 × 900mm
Safe Working Load	250kg



Technical Configuration

Manual Cranks	4pcs
6" Double Side Secure Castors, Central Locking	4pcs
ABS Side Rail Extra Height	1 set
ABS Bed Ends with Safe Lock	1 set
IV Pole	1 set
IV Pole Prevision	4pcs
Drainage Hook	2pcs
Angle Indicator	4pcs
Central Locking Pedal	2pcs

Medical Bed Series

Model: YKL-H6k
Electric Homecare Bed
Color Options: Dark Wood Wood



Technical Parameters

External Length	2080mm
External Width	1000mm
Bed Height Min.	460mm
Bed Height Max.	710mm
Mattress Platform	1925 × 830mm



Technical Configuration

Linear Motor	3pcs
6" Double Side Castors, Central Locking	4pcs
Wood Bed Ends with Soft Leather Upholstery	1 set
wood Bed Side Panel	1 set
Aluminium Alloy Foldable Side Rail	1 set
IV Pole	1 set
IV Pole Prevision	4pcs
Drainage Hook	2pcs

Medical Bed Series

Model: YKL-H2h
Manual Homecare Bed
Color Options: Dark Wood Wood



Technical Parameters

External Length	2140mm
External Width	1020mm
Bed Height	400mm
Mattress Platform	1925 × 830mm



Technical Configuration

Manual Cranks	2pcs
5" Covered Castors, Central Locking	4pcs
Wood Bed Ends	1 set
wood Bed Side Panel	1 set
Aluminium Alloy Foldable Side Rail	1 set
IV Pole	1 set
IV Pole Prevision	4pcs
Drainage Hook	2pcs
Shoes Holder	1pcs

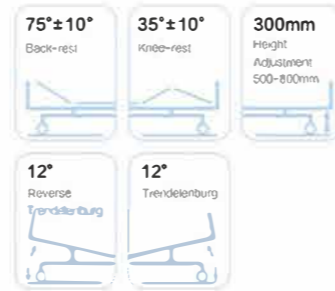
Medical Bed Series

Model: YKL-GB8c
Electric Orthopedic Traction Bed
Color Options: Sky Blue Wood
Bruce Grey



Technical Parameters

External Length	2160mm
External Width	1060mm
Bed Height Min.	500mm
Bed Height Max.	800mm
Mattress Platform	1935 × 900mm



Technical Configuration

Linear Motor	4pcs
5" Double Side Secure Castors, Central Locking	4pcs
ABS Side Rail	1 set
ABS Bed Ends with Safe Lock	1 set
Aluminium Alloy Foldable Side Rail	1 set
IV Pole Prevision	4pcs
Drainage Hook	2pcs
Aluminium Balkan Frame	1 set
Central Locking Pedal	1pcs

Medical Bed Series

Model: YKL-GB4e
Manual Orthopedic Traction Bed
Color Options: Sky Blue Wood



Technical Parameters

External Length	2270mm
External Width	1060mm
Bed Height	500mm
Mattress Platform	1925 × 900mm



Technical Configuration

Manual Cranks	4pcs
ABS Bed Ends with Safe Lock	1 set
ABS Side Rail	1 set
5" Single Side Castors, Central Locking	4pcs
Central Locking Pedal	1 pcs
IV Pole	1 set
IV Pole Prevision	4pcs
Drainage Hook	2pcs
Stainless Steel Balkan Frame	1set
Folding Dining Table with Buffer Folding	1pcs

Medical Bed Series

Model: YKL-CX2x
Children Bed



Technical Parameters

External Length	1800mm
External Width	900mm
Bed Height	650mm
External Height	1260mm
Mattress Platform	1760 × 800mm



Technical Configuration

Manual Cranks	2pcs
5' ' Covered Castors	4pcs
Full Length Side Rail	1 set
Plastic Bed Ends with Cartoon Bear	1 set
IV Pole	1 set
IV Pole Prevision	4pcs
Drainage Hook	2pcs
Buffer Air Spring	4pcs

Medical Bed Series

Model: YKL-CT2k
Children Bed



Technical Parameters

External Length	1800mm
External Width	730mm
Bed Height	500mm
Mattress Platform	1580 × 660mm



Technical Configuration

Manual Cranks	2pcs
Aluminium Side Rail with Extra Protection	1 set
Aluminium Bed Ends with Cartoon Sticker	1 set
Anti-slip Bed Feet Cover	4pcs
IV Pole	1 set

Medical Bed Series

Model: YKL-A997
Multi-Functional Electric Obstetric Bed



Technical Parameters

External Length	1980mm
External Width	720mm
Table Height Min.	630mm
Table Height Max.	880mm



Technical Configuration

Bed Frame	1pcs	Hand Bars	2pcs
Foot Pedal	1pcs	Leg Support with Cushion	2pcs
Hand Controller	1pcs	Arm Support with Cushion	2pcs
Anesthesia Screen	1pcs	Stainless Steel Sewage Basin	1pcs

Model: YKL-A105
Multi-Functional Manual Obstetric Bed



Technical Parameters

External Length	1900mm
External Width	600mm
Table Height Min.	700mm
Table Height Max.	900mm



Technical Configuration

Bed Frame	1pcs	Leg Support with Cushion	2pcs
Mattress	1pcs	Arm Support with Cushion	2pcs
Anesthesia Screen Frame	1pcs	Stainless Steel Sewage Basin	1pcs
Hand Bars	2pcs		

Medical Bed Series

Model: YKL-A1004
Electric Operating Table



Technical Parameters

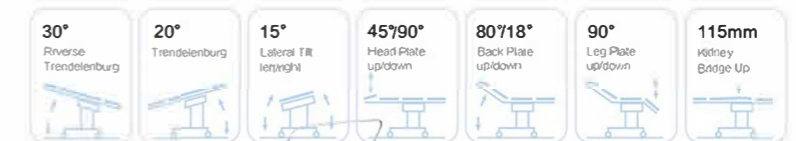
External Length	2060mm
External Width	500mm
Table Height Min.	710mm
Table Height Max.	1010mm



Technical Configuration

Bed Frame	1pcs	Leg Support with Cushion	2pcs
Mattress	1 set	Foot Support with Cushion	2pcs
Anesthesia Screen Frame	1pcs	Hand Controller	1pcs
Shoulder Holder with Cushion	2pcs	Kidney Bridge Handle	1pcs
Arm Holder with Cushion	2pcs		

Model: YKL-A3001
Manual Operating Table



Technical Parameters

External Length	2000mm
External Width	480mm
Table Height Min.	790mm
Table Height Max.	1040mm



Technical Configuration

Bed Frame	1pcs	Shoulder Holder with Cushion	2pcs
Mattress	1 set	Arm Holder with Cushion	2pcs
Anesthesia Screen Frame	1pcs	Leg Support with Cushion	2pcs

Medical Surgical Light Series

Model: YKL-LED33C, YKL-LED3C, YKL-LED4C
Medical Surgical Light Equipment



YKL-LED33C



YKL-LED3C



YKL-LED4C

Product Instruction

● PRECISE DIMMING CONTROL FOR VARIOUS LIGHTING REQUEST

With 16-stage illuminance adjustment, 4 stage color temperature adjustment, 16 stage spot size adjustment by electrical control, endo mode, R9 mode, green light (GL) mode;

*Only LED4C type with GL mode.

● SUPERIOR LAMINAR FLOW DESIGN

The streamlined lamp body design and careful assembly can increase the flow efficiency of the airflow and remove the dust and bacteria around the lamp body.

● HIGH-DENSITY LIGHTMIXING SYSTEM MAKES FOR PRECISE, HANDY DIMMING

Using HFMED's special high-density light mixing technology, it provides high brightness with great quality, and it's with 16-stage illuminance adjustment from 40000lux to 160000lux and 4-stage color temperature adjustment from 3500K to 5000K.

Specifications

Model	YKL-LED33C	YKL-LED3C	YKL-LED4C
Illuminance	140000 lx 140000 lx	140000 lx	160000 lx
Color Temperature	3500 ± 300k 4000 ± 300k 4500 ± 300k 5000 ± 300k	3500 ± 300k 4000 ± 300k 4500 ± 300k 5000 ± 300k	3500 ± 300k 4000 ± 300k 4500 ± 300k 5000 ± 300k
Color Reduction Index(Ra)	Ra: 96 R9: 97 R13: 98	Ra: 96 R9: 97 R13: 98	Ra: 96 R9: 97 R13: 98
Total Irradiance	380 380	380	380
Size of Light Field	120~250mm	120~250mm	120~250mm
Service Life of Illuminant	50000h	50000h	50000h
Power Supply Voltage	AC110~240V 50~60Hz	AC110~240V 50~60Hz	AC110~240V 50~60Hz
Best Height of Installation	2900mm	2900mm	2900mm
Total Power Consumption	80W	40W	50W
Total LED Bulb Quantity	150pcs	75pcs	112pcs
Green ENDO	NO	NO	YES
Dimming Type	Analog Dimming	Analog Dimming	Analog Dimming

Medical Surgical Light Series

Model: YKL-LED500, YKL-LED500D, YKL-LED700, YKL-LED700D
Medical Surgical Light Equipment



YKL-LED500



YKL-LED500D



YKL-LED700



YKL-LED700D

Product Instruction

● Precise

Uniform, homogeneous lighting in surface and deep cavity procedures thanks to 700/500 LED's innovative shadow control

● Simple

Our ergonomic, sterile operating concept allows for the simple and flexible control of all functions by the surgical team.

● Durable

Almost unlimited LED life expectancy delivers tremendous product reliability and investment protection.

● Efficient

Environmentally proactive: low power consumption and durable LEDs minimize the impact on our precious resources.

● Two Color Options for the Mask in the lamp head

Specifications

Model	YKL-LED500	YKL-LED500D	YKL-LED700	YKL-LED700D
Illuminance	140000 lux	≥ 140000 lux ≥ 140000 lux	160000 lux	≥ 160000 lux ≥ 160000 lux
Color Temperature	3800 ± 500k 4400 ± 500k 5000 ± 500k	3800 ± 500k 4400 ± 500k 5000 ± 500k	3800 ± 500k 4400 ± 500k 5000 ± 500k	3800 ± 500k 4400 ± 500k 5000 ± 500k
Color Reduction Index(Ra)	93	93	93	93
Total Irradiance	534 W/m ²	534 W/m ² 534 W/m ²	544 W/m ²	544 W/m ² 544 W/m ²
Size of Light Field	250~300mm	250~300mm	250~300mm	250~300mm
Service Life of Illuminant	50000h	50000h	50000h	50000h
Power Supply Voltage	AC110~240V 50/60Hz	AC110~240V 50/60Hz	AC110~240V 50/60Hz	AC110~240V 50/60Hz
Best Height of Installation	2900mm	2900mm	2900mm	2900mm
Total Power Consumption	60W	60W 60W	80W	80W 80W
Total LED Bulb Quantity	72pcs(12*6)	144pcs(12*6+12*6)	108pcs(18*6)	218pcs(18*6+18*6)
ENDO	YES	YES	YES	YES

Medical Surgical Light Series

Model: YKL-LED500S, YKL-LED700S, YKL-LED280, YKL-LED280W Medical Surgical Light Equipment



YKL-LED500S



YKL-LED700S



YKL-LED280



YKL-LED280W

Product Instruction

• Precise

Uniform, homogeneous lighting in surface and deep cavity procedures thanks to 700/500 LED's innovative shadow control

• Simple

Our ergonomic, sterile operating concept allows for the simple and flexible control of all functions by the surgical team.

• Durable

Almost unlimited LED life expectancy delivers tremendous product reliability and investment protection.

• Efficient

Environmentally proactive: low power consumption and durable LEDs minimize the impact on our precious resources.

Specifications

Model	YKL-LED500S	YKL-LED700S	YKL-LED280	YKL-LED280W
Illuminance	140000 lux	160000 lux	50000 lux	50000 lux
Color Temperature	3800 ± 500k 4400 ± 500k 5000 ± 500k	3800 ± 500k 4400 ± 500k 5000 ± 500k	4000 ± 500k	4000 ± 500k
Color Reduction Index(Ra)	93	93	97	93
Total Irradiance	534 W/m ²	544 W/m ²	171 W/m ²	171 W/m ²
Size of Light Field	250-300mm	250-300mm	150mm	150mm
Service Life of Illuminant	50000h	50000h	50000h	50000h
Power Supply Voltage	AC110~240V 50/60Hz	AC110~240V 50/60Hz	AC110~240V 50/60Hz	AC110~240V 50/60Hz
Brightness Adjustment	Automatic 8-stage Continuous Light Adjustment	Automatic 8-stage Continuous Light Adjustment	/	/
Total Power Consumption	60W	80W	20W	20W
Total LED Bulb Quantity	72pcs(12*6)	108pcs(18*6)	19pcs	19pcs
ENDO	YES	YES		

Medical Surgical Light Series

Model: YKL-LED25, YKL-LED25C, YKL-LED25W
Medical Surgical Light Equipment



YKL-LED25



YKL-LED25C



YKL-LED25W

Product Instruction

• Precise

Uniform, homogeneous lighting in surface and deep cavity procedures thanks to 700/500 LED's innovative shadow control

• Simple

Our ergonomic, sterile operating concept allows for the simple and flexible control of all functions by the surgical team.

• Durable

Almost unlimited LED life expectancy delivers tremendous product reliability and investment protection.

• Efficient

Environmentally proactive: low power consumption and durable LEDs minimize the impact on our precious resources

• Excellent Multi-Lens System, Lighting Designed to meet Your Individual Needs, Safe Hygiene for Your Treatment

Specifications

Model	YKL-LED25	YKL-LED25C	YKL-LED25W
Illuminance	≥8000 lux	≥8000 lux	≥8000 lux
Color Temperature	3800 ± 300k 4800 ± 300k	3800 ± 300k 4800 ± 300k	3800 ± 300k 4800 ± 300k
Color Reduction Index(Ra)	97	97	97
Illuminance Depth	≥1600mm	≥1600mm	≥1600mm
Total Irradiance	200 W/m ²	200 W/m ²	200 W/m ²
Size of Light Field	195mm	195mm	195mm
Lamp Head Diameter	450mm	450mm	450mm
Rater Power of Bulb	3.2V/1W	3.2V/1W	3.2V/1W
Service Life of Illuminant	≥50000h	≥50000h	≥50000h
Power Supply Voltage	AC110~240V 50/60Hz	AC110~240V 50/60Hz	AC110~240V 50/60Hz
Total Power Consumption	60VA	60VA	60VA
Total LED Bulb Quantity	25pcs	25pcs	25pcs