

SRT06X SERIES ELECTROTHERMAL ACTUATOR

DESCRIPTION

SRT061 electro-thermal actuator is designed to control the open/close of the pipe of chilled water or hot water for air-conditioning system so as to control the indoor temperature. Mount the actuator on the valve for chilled water or hot water; it can control the open/close of the valve through the electro-thermal sensor inside the actuator. Because the valve is normally closed, when it needs to work, the thermostat will provide an open signal by connecting it with the AC supply to make the actuator work, then the valve will be opened, the chilled water or hot water will enter into the fan coil or heat exchanger to supply cold air or warm air for the room; when the room temperature reaches the set point, the thermostat will shut the electro-thermal actuator power off, and the valve spring will close the valve and stop the water flow entering fan coil or heat exchanger. Through opening or closing the valve, room temperature will be always kept in the set range.



The electro-thermal actuator can be connected with the valve body quickly by using press-button. It is flexible, convenient, reliable performance, durable and energy saving.

MODEL DESCRIPTION:

S	R	T	0	6	1	0	2	4	A	3	5
Series Code		Product Code	Work Code			Voltage			Valve Connector	Stroke	
		T-Electro-thermal Controller	061-Electrothermal (Standard Type)			024-AC24V±10% 50Hz, 60Hz 110-AC110V±10% 50Hz, 60Hz			A-Match for SRV2010, SRV2000 series DN15 and DN20 valve body and use 5.8mm insulating gasket	35-3.5mm 45-4.5mm	
			062-Electrothermal (Fast Type)			220-AC220V±10% 50Hz, 60Hz 230-AC230V±10% 50Hz, 60Hz			B-Match for SRV061 series valve body and use 5.8mm separate gasket		

TECHNICAL DATA AND SPECIFICATIONS

PRODUCT NAME		SRT061 ELECTRO-THERMAL ACTUATOR	
HOUSING	MATERIAL		PA6110
	COLOR		White
CONTROL ELEMENT (T)		Electro-thermal wax sensor	
WORKING FORCE INTENSITY (F) & DIRECTION		80N ≤ F < 130N; Direction: DOWNWARD	
CONNECTOR	For SR2000 series valve		M28X1.5
	For SR2010 series valve		M28X1.5
	For SRV061 series valve		M30X1.5
WORKING AMBIENT TEMPERATURE		-0.5°C ~ 40°C	
FIRST FULLY OPEN	SRT061 (STANDARD TYPE)	3.5mm Stroke	4~5.5 minutes (at 25°C)
		4.5mm Stroke	5~6.5 minutes (at 25°C)
	SRT062 (FAST TYPE)	3.5mm Stroke	2.5~3 minutes (at 25°C)
		4.5mm Stroke	2.5~4 minutes (at 25°C)
FULL STROKE		3.5mm or 4.5mm	
PROTECTION CLASS		IP40	
POWER CONSUMPTION		1.1VA	
MAX. IMPACT CURRENT	24V		1.2A
	110V		0.9A
	220V/230V		0.7A
LEAD WIRE		1m length (2-core)	
NET WEIGHT		94g	

DIMENSIONS (mm)

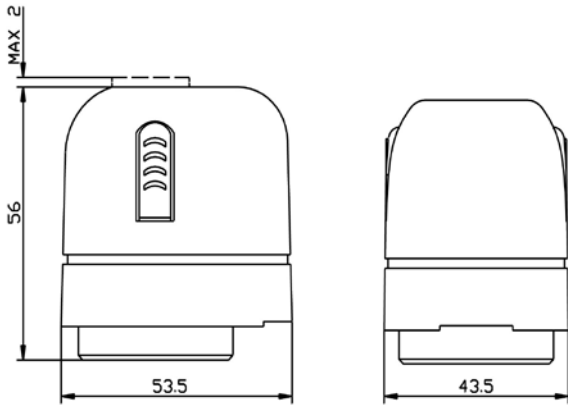


Fig.1 Dimension

“MAX 2” means the max upward moving height when the actuator is overloaded (2mm).

WITH SRV061 NORMALLY CLOSE VALVE

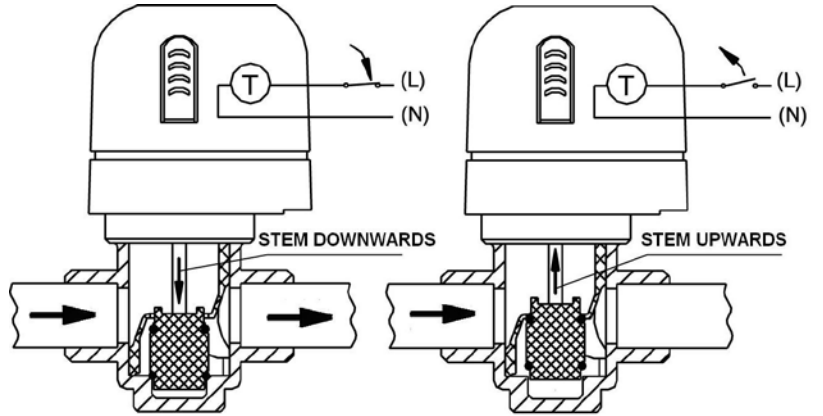


Fig.3

INSULATING GASKET

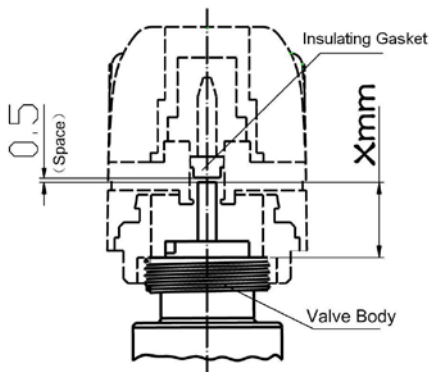


Fig. 2 Insulating gasket dimension

“Xmm” means the height from the top of the valve stem to the top of the connector. Standard height is 16mm, and different height can be made by order.

WITH SRV2000 & SRV2010 VALVE

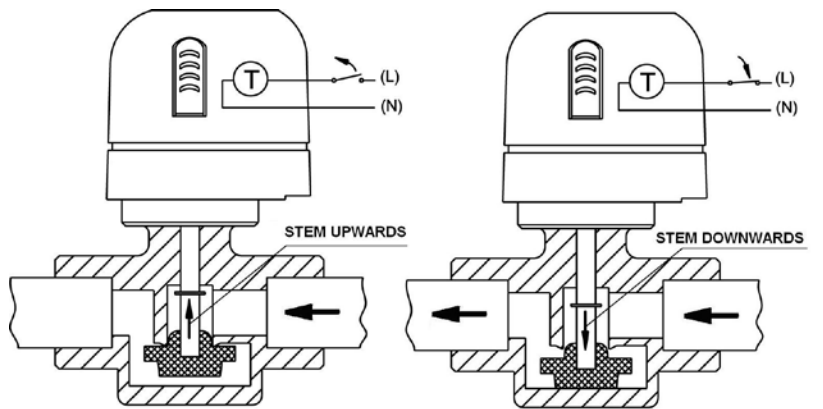
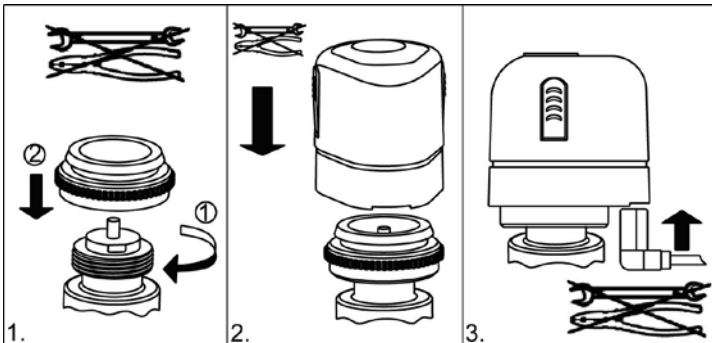


Fig.4

ASSEMBLY



DISASSEMBLY

